

Free!



The

# Salty Dog®



## CHESAPEAKE BAY EDITION

Published Every Other Week • Distributed in Maryland, Delaware, Southern Pennsylvania and Virginia

### POWERBOATS & SAILBOATS ...Including Marine Services



25' 2015 PARKER 2510 XLD WA, T/Yamaha 4-stroke, Garmin electronics, radar, windlass, 12 rodholders, (2) 30 gallon livewell, perfect fishing boat, trailer available, **\$80,000**, 443-695-2431, rkraem1@gmail.com 147297



25' 2018 GRADY WHITE 257 FISHERMAN, T/F150 Yamahas, 90 hrs, 7/23 warranty, all factory options, Garmin GPS radar, Icom fish inshore/offshore, winterized, spring 2019 ready, like brand new! **\$129,000**, 302-226-3734, Cell 302-218-9325 144975



55' 1999 VIKING CONVERTIBLE, this beautiful Viking Sporthish has only had 2 owners since new, 2130 original hours, MTU 1150hp, complete repaint, **\$439,000**, 320-237-1512, f.blomquist@hotmail.com 147714



21'5" 2004 MAKO 212, new in 2005, repowered Aug '16, only 160 hrs on motor, alum Load Rite trailer rebuilt, new axl, hyd breaks, new stereo, FF, VHF, livewell, stored indoors most of its life, one owner-this boat catches fish!!! **\$31,900**, 302-853-2335, garyzlock@gmail.com 147598

### List Your Boat As Low As \$39!

Go to [www.thesaltydog.com](http://www.thesaltydog.com)  
to get started!

Private Boat Ads Only



22' 2015 ROBALO R227, boats like the R227 are the reason why dual console outboards are one of the hottest sellers on the water, **\$42,500 FIRM**, 609-306-6328, Gallinacfp@comcast.net 147560



30' 2019 JEANNEAU 895 POCKET CRUISER, Lowest priced 30' cruiser on the market! **\$Call for Price**, 302-945-2254, anita@rudymarine.com



21' 1999 KEY LARGO CENTER CONSOLE, 225hp Evinrude OceanPro, fiberglass, all electronics, w/trailer, financing available with \$2,995 down, **\$10,995**, 732-240-5307, countrymotors2@comcast.net



30' 2019 JEANNEAU LEADER 9.0 CC, T/F250 Yamahas, CC with stand up head, V-berth & aft berth, **\$Call for Price**, 302-945-2254 • anita@rudymarine.com

Annapolis, MD • St. Michaels, MD  
Deltaville, VA • Woodbridge, VA

**CONTACT US TODAY!**

info@curtisstokes.net  
410.919.4900

CURTIS  
STOKES  
& ASSOCIATES

[www.curtisstokes.net](http://www.curtisstokes.net)

**1-888-843-1585 • Private Boat Information on Page 28**





**In-Stock 2019's  
Be on the water by  
JULY 4<sup>th</sup>**

***This is the Big June Blow-Out! We're Making Room for 2020 Models***



**SPORTSMAN**

In-Stock 2019 Models	Reduced
All Masters .....	\$3,000
212 Open .....	\$4,000
231/232 w/200hp .....	\$4,000
231/232 w/250hp .....	\$5,000
241/242 .....	\$5,000
251 Heritage .....	\$5,000
252 Open .....	\$6,000
#18143 - 312CC .....	<b>NOW: \$184,995</b>



**ALL 2019  
BAYLINER MODELS  
REDUCED!  
EX: (3) E16's to Sell  
Was: \$20,009  
Now: \$18,259**



**CROWNLINE**

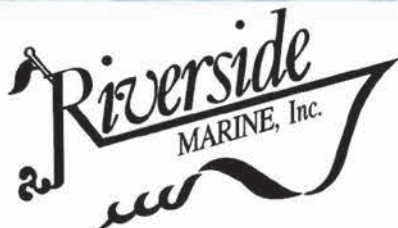
In-Stock 2019 Models	Reduced
#18650 - E215XS .....	\$5,628
#18624 - E23XS .....	\$6,000
#18317 - E26XS .....	\$7,000
#18609 - E285XS .....	\$11,963
#18608 - E295XS .....	\$22,610



**Pre-Owned Boats  
16' - 30'**

**Many have been Discounted  
and are Priced to Go  
this Month**

**Sales Ends June 29th**



600 RIVERSIDE DRIVE  
ESSEX, MD 21221  
410.686.1500  
800.448.6872



**WWW.RIVERSIDEMARINE.COM • SALES@RIVERSIDEBOATS.COM**



# • Lippincott Marine •

## 2019 SPRING SLIPS AVAILABLE

Special Rates for Newly Listed Brokerage!



**REDUCED!**

Sistership

33' 2002 SILVERTON  
SPORT BRIDGE, \$84,500



Sistership

30' 2004 MAINSHIP  
PILOT 30 RUM RUNNER  
\$79,500



**THRUSTERS!**

34' MAINSHIP TRAWLER,  
bow thruster,  
\$34,500 • 3 AVAILABLE!



24' 2000 SEA RAY  
245 WEEKENDER • \$14,900



**GREAT  
LOOP  
READY!**

**REDUCED!**

34' '07 MAINSHIP 34 TRAWLER,  
S/DIESEL • \$174,500



FACTORY  
PHOTO

43' '00 MAINSHIP TRAWLER  
\$197,600



47' '97 MAINSHIP MY  
T/DETROIT 671's • \$115,900



**REDUCED!**

34' '00 SEA RAY SUNDANCER,  
ON DISPLAY AT THE  
BAY BRIDGE BOAT SHOW  
\$62,000

**20' - 52' SLIPS: POWER OR SAIL • POOL/BATHHOUSE  
FULL SERVICE MARINA • GATED FOR SECURITY  
RESTROOMS WITH SHOWERS • LAUNDRY**

GRASONVILLE, MD  
Rts. 301/50 Exit 42  
(SE of Kent Narrows Bridge)

**(410) 827-9300**

email: lippincott@mail.com  
www.lippincottmarine.com



# BALTIMORE BOATING CENTER

2015 Turkey Point Road  
Essex, MD 21221  
Just 10 Minutes off



**410-687-2000**

Brenda Wilmoth  
Jim High • Bill Cox  
Eli Finney • Rick Scott

**WE TAKE TRADES & BUY BOATS • CALL NOW!**

**KenCraft**



**IN STOCK & READY TO GO FROM \$39,900**



**Carolina Flared Center Consoles up to 25' Bay Boats & skiffs Like No Other!**

**WE NEED LISTINGS...CALL NOW! - DON'T WAIT...WE HAVE BUYERS!**

**1600hp  
Only 10 Hrs!**



**46' Black  
Thunder 46  
EC 2003  
\$145,000  
w/Trailer**

**MUST  
GO!**



**44' Regal 4460  
Commodore  
2007  
T/Volvo Dsls,  
550 hrs,  
IPS drives,  
\$199,900**

**WE BUY  
BOATS!**

**WE TAKE  
TRADES!**



**44' Carver  
440 Aft Cabin  
Motor Yacht 1994  
\$119,900**

**BEAUTIFUL!**



**40' Legacy  
Yachts Sedan  
1999  
\$179,900**



**41' Sea Ray  
410 Sundancer  
2000  
\$114,900**

**20 NEW  
LISTINGS  
VISIT  
WEBSITE**



**40' Sea Ray  
400 Sedan  
Bridge 2000  
\$109,900**

41' 1995 Sunseeker Tomahawk	\$99,000	29' 1998 Sea Ray 290 Sundancer	\$24,900
41' 2000 Sea Ray 410 Sundancer	\$117,900	28' 2001 Sea Ray 280 Sundancer	<b>SOLD</b> \$39,900
38' 2005 Fountain Lightning	\$114,900	28' 1997 Maxum 2800 SCR	\$22,900
38' 2000 Cruisers Yachts 3870 Express	\$84,900	28' 2008 Larson LXi 288 Bowrider	\$29,900
37' 1996 Carver 370 Aft Cabin MY	\$59,900	28' 1999 Carolina Classic Express Fisherman	\$59,900
35' 2008 Rinker 350 Express Cruiser	<b>SOLD</b> \$89,900	28' 2000 Bayliner 2859 Ciera Express	\$24,900
35' 1990 Ocean Yachts Super Sport	\$44,900	27' 1998 Sea Ray 270 Sundancer	<b>SOLD</b> \$19,900
34' 2005 Sea Ray 340 Sundancer	\$99,000	27' 1988 Sea Ray 270 Amberjack	\$9,900
33' 1989 Wellcraft 330 Coastal	\$23,900	27' 2003 Chaparral 270 Signature	\$49,900
33' 1973 Chris Craft Catalina Sport Sedan	\$19,900	26' 2013 Cobalt 26 SD	\$64,900
33' 2004 Chaparral 330 Signature	\$67,900	26' 2006 Sea Ray 260 Sundancer	\$44,900
32' 2007 Rinker 320 Express Cruiser	\$64,900	26' 2004 Sea Ray 260 Sundancer	\$21,900
32' 1998 Maxum 3200 SCR	\$31,500	26' 2000 Sea Ray 260 Sundancer	\$19,900
32' 1995 Maxum 3200 SCR	\$27,900	26' 2010 Crownline 260 CR	\$54,900
31' 2001 Sea Ray 310 Sundancer	\$47,900	25' 1997 Proline 251 Walkaround	\$29,900
31' 2007 Four Winns 318 Vista	\$69,900	25' 2020 KenCraft Challenger	\$Call
30' 2006 Pursuit 3070 Offshore	\$84,900	25' 2010 Carolina Classic	\$89,900
30' 2004 Campion Allante LX925i	\$39,900	24' 2014 Crownline E4	\$59,900

**www.BaltimoreBoatingCenter.com**



Lowered minimum commissions!  
Reduced storage display rates! Dedicated  
onsite display areas in water and on land!  
Unequaled exposure!



428 Kent Narrows Way,  
North Grasonville, MD 21638



22170 Great Oak Landing Rd.  
Chestertown, MD 21620

# List Your Boat

with Mears Point Yacht Sales Now!



**Todd Corbett**  
todd@mearspoint.com  
Call: 410-725-7075

**Brad Wilson**  
brad@mearsgreatoaklanding.com  
Call: 410-778-5007



34' '01 Sea Ray 340  
Sundancer • \$62,000



50' '97 Sea Ray 500  
Sundancer • \$134,500



28' '09 Cobalt 276  
\$69,000



31' '00 Sea Ray 310  
Sundancer • \$49,500



34' '95 Silverton ACMY  
\$39,900



40' '98 Sea Ray 400 Express  
Cruiser • \$84,000



41' '96 Silverton Convertible  
\$69,900



37' '89 Chris Craft  
\$44,000



35' '99 Carver 356 ACMY  
\$68,900

**410-827-8888**

See Our Complete Inventory at [www.MearsPointYachtSales.com](http://www.MearsPointYachtSales.com)





**JUST LISTED!**

**2009 Sunseeker Predator 62 • \$850,000**



**HOT DEAL!**

**2002 Carver 570 Voyager • \$499,999**

 <b>1999 Carver 530 Voyager \$235,000</b>	 <b>2006 Fairline 46 Phantom \$265,000</b>	 <b>2007 Sea Ray 440 Sundancer • \$259,000</b>	 <b>1996 Sea Ray 400 Express Cruiser • \$65,000</b>	 <b>1998 Mainship 40 Sedan Bridge • \$85,000</b>
 <b>2000 Cruiser Yachts 3870 \$99,000</b>	 <b>1994 Sea Ray 380 Sun Sport • \$34,500</b>	 <b>2004 Four Winns 378 Vista \$112,999</b>	 <b>1993 Sea Ray 370 Sedan Bridge • \$59,900</b>	 <b>2002 Carver 366 Motor Yacht • \$79,999</b>
 <b>1998 Silverton 351 Sedan Cruiser • \$58,900</b>	 <b>2000 Carver 350 Mariner \$49,900</b>	 <b>2011 Sea Ray 350 Sundancer • \$175,000</b>	 <b>2006 Meridian 341 Sedan \$109,000</b>	 <b>2008 Crownline 340 CR \$99,999</b>
 <b>2005 Silverton 34 Convertible • \$112,900</b>	 <b>2005 Formula 330 SS \$57,900</b>	 <b>2008 Chaparral 330 Signature • \$108,000</b>	 <b>1999 Sea Ray 330 Sundancer • \$49,900</b>	 <b>2004 Monterey 322 Cruiser \$55,999</b>
 <b>2003 Sunsation 32 Dominator • \$59,999</b>	 <b>2011 Chaparral 310 Signature • \$124,000</b>	 <b>2015 Robalo 305 Walkaround • \$175,900</b>	 <b>2009 Cobalt 303 \$79,900</b>	 <b>2004 Pro-Line 30 Walkaround • \$42,900</b>
 <b>2004 Back Cove 29 \$135,000</b>	 <b>2010 Sea Ray 280 Sundancer • \$79,999</b>	 <b>2003 Baja 272 Boss \$33,000</b>	 <b>2008 Chaparral 270 Signature • \$47,900</b>	 <b>2010 Sea Ray 260 Sundeck \$45,000</b>
 <b>2006 Robalo 240 CC \$35,000</b>	 <b>2014 Cobalt 26SD \$78,900</b>	 <b>2015 Larson 258 LXi \$49,999</b>	 <b>2007 Hydra-Sports 22 CC \$37,000</b>	 <b>2015 Chaparral 190 H2O \$26,500</b>



**703-497- BOAT (2628)**

Call for a Free Estimate!

**We Now Offer Boat Detailing and Boat Storage!**

**Best selection in VA, MD & DC!**

**[www.dominionyachts.com](http://www.dominionyachts.com)**

**Largest Selection of Used Boats in Mid-Atlantic!**



# Upper Chesapeake Yacht Sales

**John Curry • (610) 299-3598**  
**www.upperchesapeakeyachtsales.com**



**42' 2016  
Regal Sport  
Coupe  
\$429,900**



**Fully loaded high end Regal with just 70 hours on Volvo 400hp Diesel motors and IPS drives. Boat was delivered new in April of 2018 which is start of warrantee period. Buy now and be ready for Spring!  
 We own this boat and trades are considered!**



**44' '89 C&C Sloop,**  
2008 Yanmar, very nice,  
**\$89,900**



**43' '07 Silverton Sport Bridge,**  
hardtop, Diesel IPS drive,  
loaded, mint, **\$249,900**



**42' '86 Chris Craft 426 Catalina,**  
new 8.1L Crusaders, genset,  
davit, loaded, mint, **\$79,900**



**42' '16 Regal Sport Coupe,**  
T/400hp Volvo Dsls IPS,  
70 hrs, mint, **\$429,900**



**35' '77 Fugi Ketch,**  
Diesel, estate sale, nice,  
**\$28,000**



**31' '66/'04 Bertram,**  
'04 rebuilt, T/440 Yanmars,  
full tower, mint, **\$179,900**



**29' '93 Sea Ray Sundancer,**  
454 Merc, Bravo, AC,  
**\$7,900**



**27' '07 Glastron 279  
Express,** 280hp, AC,  
super clean, **\$22,900**



**27' '07 Maxum 2600 SE,**  
300hp Merc, AC, mint,  
**\$29,400**



**21' '05 Supra V Launch Ski  
Boat,** V-Drive 340hp, mint,  
**\$28,500**

- 24' '01 Bayliner Hardtop Express,** 220hp, trailer..... **\$10,500**
- 27' '00 Larson 270 Cabrio,** 7.4L, AC..... **\$14,900**
- 27' '07 Maxum 2600 SE,** 350hp Mag, AC..... **\$24,900**
- 31' '70 Bertram,** T/330hp Chryslers, AC..... **\$29,900**
- 32' '85 Wellcraft St Tropez,** T/330hp, AC, loaded..... **\$13,500**
- 35' '88 Beneteau Oceanis Sloop,** Volvo Dsl, AC, elec fridge, nice... **\$36,900**

- 35' '77 Fugi Ketch,** Dsl, estate sale, nice..... **\$28,000**
- 35' '76 Ericson Sloop,** Volvo Diesel, upgrades in process ..... **\$14,900**
- 40' '97 Sea Ray Sundancer,** T/7.4L Mercs, mint..... **\$89,900**
- 40' '93 Sea Ray Express,** T/454 V-Drives, gen, AC ..... **\$49,900**
- 46' '89 Silverton Motor Yacht,** T/485 Detroit, 3 SRs ..... **\$69,900**



**Expect The Same  
Superior Service From Our  
Brokerage That You Get  
From Our Marina**

**BOAT SALES & BROKERAGE**  
 • *Financing & Insurance Available* •  
**WORTON CREEK MARINA**  
 23145 Buck Neck Road • Chestertown, MD 21620  
**(410) 778-3282**





**Worldwide Yacht Sales | Yacht Charters | New Yacht Construction**



1987 48' Viking - \$119,750  
Mark Welsh - 410.645.0007



1986 47' Buddy Davis - \$339,000  
David Robinson - 410.310.8855



2002 44' Endeavour - \$239,500  
Mary Catherine Ciszewski - 804.815.8238



1987 43' Trojan - \$129,000  
David Robinson - 410.310.8855



1998 42' Treworgy - \$269,000  
Lin Earley - 757.672.2778



2008 42' Nordic Tug - \$445,000  
Mark Welsh - 410.645.0007



1987 42' Grand Banks - \$183,000  
Jeremy Churchill - 757.636.7515



2007 40' Formula - \$220,000  
Mark Welsh - 410.645.0007



2008 40' Fathom - \$379,500  
Curtis Stokes - 410.919.4900



1988 40' Island Gypsy - \$62,500  
Mike Delluomo - 443.421.2965



1998 37' Tiara - \$125,000  
Mary Catherine Ciszewski - 804.815.8238



1991 36' Chesapeake Deadrise - \$36,500  
Mary Catherine Ciszewski - 804.815.8238

To see more details about these and all other yachts around the globe, please visit our website below.

Annapolis, MD • St. Michaels, MD • Delaware City, DE • Deltaville, VA • Woodbridge, VA  
Telephone: 410.919.4900 • Email: [info@curtisstokes.net](mailto:info@curtisstokes.net)

**[www.curtisstokes.net](http://www.curtisstokes.net)**



# Sassafras Harbor Marina Yacht Sales


**888-221-5022**

 1 George Street, P.O. Box 68  
Georgetown, MD

[shmys@sassafrasharbormarina.com](mailto:shmys@sassafrasharbormarina.com)


**56' Carver 564 Cockpit MY '02**  
T-Volvo Diesel, T&H Floors  
**\$338,000**



**41' Sea Ray Sundancer '00**  
T-Merc. Clean, well kept  
**\$99,900**



**39' Silverton 392 MY '99**  
T-Merc. 7.4 EFI, Well maintained  
**\$89,900**



**35' Maxum 3500 SY '05**  
T-Merc. Meticulously maint.  
**\$69,500**



**35' Sea Ray Sundancer '11**  
T-Merc SeaCore B-III w/joy stick  
**\$180,000**



**31' Sea Ray 310 Sundancer '09**  
T-Merc. Axios, Loaded!  
Camper canvas **\$104,500**



**30' Monterey 302 '04**  
T-Volvo 5.0, Meticulously maint.  
**\$45,000**



**30' Sea Ray 300 Sundancer '05**  
T-Merc. MAG, Gen. lightly used  
**\$64,900**



**26' Sea Ray Sundancer '02**  
Merc./B III, Generator, A/C  
w/trailer **\$29,900**



**24' Bayliner 245 '05**  
Merc. 5.0L I/O, GPS, A/C  
w/trailer **\$20,500**



**23' Dusky 233 '01**  
Yamaha 250XB Saltwater series  
**\$29,999**



**17' Bayliner 175 '05**  
Merc/Alpha One, Nice condition  
w/trailer **\$4,900**

56' Carver 564 Cockpit MY '02.....\$338,000  
47' Sea Ranger '87.....Sale pending  
42' Chris Craft 426 '86.....\$49,900  
42' Sea Ray 420 '01.....Sale pending  
37' Sea Ray Sedan Bridge '95.....\$55,000

34' Meridian 341 Sedan '05.....\$102,900  
34' Sea Ray Sundancer '00.....\$49,500  
33' Rinker 330 FV '99.....\$29,900  
29' Monterey 296 '98.....SOLD  
28' Bayliner 285 '03.....\$33,500

26' Sea Ray Sundancer '00.....Sale pending  
25' Crownline 250CR '94 w/trl.....\$9,700  
23' Chaparral 235XLC '88 w/trl.....\$5,500  
22' Sea Ray 220SD '90 w/trl.....\$8,700  
22' Sea Ray 225WE '01w/trl.....\$16,900



**Sassafras Harbor  
Marine Store**  
~ PARTS TO APPAREL ~  
**BOATING NEEDS & WANTS!**  
*The Heron's Nest  
Gift Shop*



**Marina: 410-275-1144 ~ [SassafrasHarborMarina.com](http://SassafrasHarborMarina.com) ~ Store: 410-275-2666**



# ANNAPOLIS CRUISAIR, INC.

Family Owned & Operated for Over 50 Years

**SALES • SERVICE • INSTALLATION**



**U-LINE**  
U-Line Ice makers  
110/115vAC

We will meet or beat  
any competitive  
price quote for  
these products!

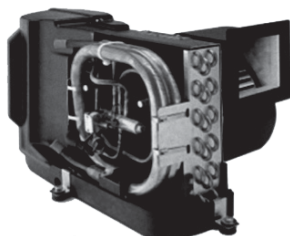


Marine Diesel  
Heaters

**Espar**

**Cruisair®**

New Turbo  
Air Conditioners • Heat Pumps



• We Have • BREATHE EASY AIR FILTERS

**Sentry™**  
*Cruisair*

BATTERY  
CHARGERS



SAFEST  
CHARGER  
ON THE  
MARKET!

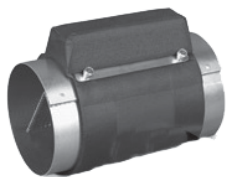
**Eskimo Ice  
600 Ice Pump**

Provides up to 600 lbs. of fresh  
ice in a day from your ships  
water tank.



**STINKY BOAT?**

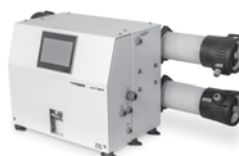
We Have **NEW**  
Breathe Easy  
Air Purifiers



➔ **DOMETIC**

**SPOTZERO®**  
Fresh Water Reverse Osmosis

**Water Purification Systems**



**Vitrifrigo**  
REFRIGERATORS

**WAECO**  
**Adler/Barbour®**



MARINE AIR SYSTEMS®  
**AIRRRRRRRR**  
by Dometic GROUP



**KOHLER.**

- Generators -

**Onan**



**Fischer Panda**

2124 Renard Ct. • Annapolis, MD

(410) 224-0970 • (410) 974-6136 • Fax (410) 224-0050

[www.annapoliscruisair.com](http://www.annapoliscruisair.com)





**2019 MODEL CLEARANCE SALE!**  
**LOWEST PRICES OF THE YEAR ON SIX REMAINING 2019'S!**

**228 Commander • \$67,500**



**328 Commander • \$259,900**



**186 Commander • \$35,995**



**266 Commander  
\$113,600**



**226 Traveler  
Hardtop • \$68,900  
Bimini Top • \$58,100**



**Sheltered Cove**  
**MARINA**  
 Sales • Service • Slips • Storage

910 S. Green St.  
 Tuckerton, NJ 08087  
**609-296-9400**  
[www.shelteredcovemarina.com](http://www.shelteredcovemarina.com)



**Just 4 Miles Off Exit 58 on GSP**

866-BOATNRV 20 INDUSTRIAL DRIVE, HAMBURG, PA 19526 • 800-BOATNRV 12634 US-9W, WEST COXSACKIE, NY 12192  
**843-717-9538** 401 SYCAMORE DR, RIDGELAND, SC 29936 • 888-BOATNRV 2475 WESTEL RD, ROCKWOOD, TN 37854

**YOUR FACTORY DIRECT BOATING HEADQUARTERS**

**17 EBO STARTING @  
\$22,999 \$204/mo**

**WATER TESTING  
AVAILABLE 7 DAYS/WK**

**186 BAY STARTING @  
\$24,999 \$224/mo**



**90HP MOTOR & TRAILER**

**CARAVELLE**



**70HP MOTOR & TRAILER**

**Key Largo**

**315 ANGLER STARTING @  
\$18,999 \$170/mo**



**BIMINI TOP & STEREO  
50HP MOTOR & TRAILER**

**321'S STARTING @  
\$23,999 \$215/mo**



**LEXINGTON SUNDECK & CHANGING ROOM**

**626SD TRI-TOON STARTING @  
\$34,990 \$314/mo**



**LEXINGTON 150HP MOTOR & TRAILER**

**521'S STARTING @  
\$24,999 \$224/mo**



**LEXINGTON BIMINI TOP & STEREO  
90HP MOTOR & TRAILER**

**519'S STARTING @  
\$20,999 \$188/mo**

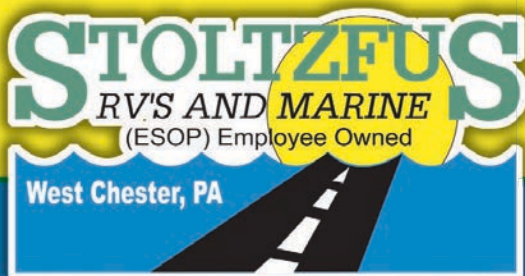


**LEXINGTON BIMINI TOP & STEREO  
50HP MOTOR & TRAILER**

[www.factorydirectmarine.com](http://www.factorydirectmarine.com)

All prices are plus sales tax, registration and title fees. For monthly payments buyer must qualify tier A credit. Not everyone will qualify.





**800-860-1406**  
Text us at 610-399-0628

**stsrec.com**

1335 Wilmington Pike West Chester PA 19382

**BAYLINER**



**22' 2019 Bayliner VR6 OB**  
200hp Mercury 4-stroke  
Call for Price



**22' 2019 Bayliner VR6 I/O**  
200hp 4.5L Mercruiser  
Call for Price



**21' 2019 Bayliner Element F21**  
150hp Mercury 4-stroke, trailer  
Call for Price

**2 AVAILABLE**



**20' 2019 Bayliner VR5,**  
150hp Mercury 4-stroke,  
trailer • Call for Price



**20' 2019 Bayliner DX2000**  
150hp Mercury 4-stroke,  
trailer • Call for Price



**19' 2019 Bayliner 190 DB**  
150h Mercury 4-stroke, trailer  
Call for Price

**2 AVAILABLE**



**18' 2019 Bayliner VR4**  
115hp Mercury 4-stroke  
Call for Price

**2 AVAILABLE**



**18' 2019 Bayliner Element F18**  
115hp Mercury 4-stroke  
Call for Price



**18' 2019 Bayliner Element E18**  
115hp Mercury 4-stroke, trailer  
Call for Price

**2 AVAILABLE**



**16' 2019 Bayliner Element E16**  
75hp Mercury 4-stroke  
Call for Price

**PRE-OWNED  
SPECIAL!**



**24' 1999  
Bayliner 2452  
Ciera,**  
5.0L 350hp  
Mercruiser I/O,  
584 hours,  
good condition  
**\$12,995**



**LEFTOVER  
SPECIAL!**

**18' 2018  
Bayliner VR4,**  
4.5L 200hp  
Mercruiser I/O  
**Special  
\$27,995**



# ALMARS

**Almars has Almost Every Horsepower In Stock  
for Immediate Delivery! From 2.5hp - 400hp**

**GET A NEW  
4-STROKE  
TODAY!**

**Plug & Play  
Replacement  
for Your Old 2-Stroke!**



**150**  
4-stroke  
Black  
**\$10,995**



**150 ProXS**  
4-stroke  
Black  
**\$11,795**



**175XL ProXS**  
4-stroke  
Black  
**\$14,795**



**200**  
Sea Pro  
Black  
**\$15,375**



**225XL**  
4-stroke  
Black  
**\$16,695**



**250 XL**  
4-stroke  
White  
**\$20,695**

**JUMPING JUNE! VERADO CLEARANCE SALE!  
EXTREMELY LIMITED QUANTITIES!**



**225hp**  
black • **\$16,995**



**250hp**  
black • **\$17,995**



**300hp**  
black • **\$19,495**



**300hp**  
white • **\$20,995**



**350hp**  
black • **\$21,995**



**350hp**  
white • **\$24,995**

**225XL Opti  
ProXS • \$14,995**  
One Left

**225L ProXS Opti**  
Torquemaster Gear Case  
**\$15,850**  
One Left

**150XL Opti ProXS**  
**\$10,995**  
One Left

**250L Opti  
ProXS • \$16,995**  
One Left!

**2018 250hp  
XXL Opti**  
**\$16,995**

**250XL PRO  
VERADO 15,995**  
Only 1 Avail

## REMANUFACTURED OUTBOARD ENGINE SALE!

90hp - 250hp 3 Year Warranty with Free Basic Rigging  
**Starting As Low As \$5,995 Call for Details!**

**PRICES INCLUDE  
ALL CURRENT  
REBATES  
AND OFFERS!**

Call us for current pricing new current  
and noncurrent outboards  
**NO SALES TAX IN DELAWARE!**  
701 Washington St., New Castle, DE  
**302-328-8541**  
[www.almarsoutboards.net](http://www.almarsoutboards.net)

HOURS: Monday - Friday: 8am - 5pm  
CALL FOR GREAT PRICING ON NEW  
& USED MERCURY OUTBOARDS  
**NO HIDDEN COSTS**  
NOT RESPONSIBLE FOR TYPOGRAPHICAL ERRORS

All prices good  
thru June 20th

**MERCURY**  
"1 On The Water"  
Pricing includes all rebates.



# Unforgettable Adventures.



## Feel-Good Savings.

Heed the call of adventure with great insurance coverage.  
Boat insurance serviced by the boating experts. Get a fast, free quote today.



[BoatUS.com/insurance](http://BoatUS.com/insurance) | 1-800-283-2883 | Local Office

Some discounts, coverages, payment plans and features are not available in all states, in all GEICO companies, or in all situations. Boat and PWC coverages are underwritten by GEICO Marine Insurance Company. In the state of CA, program provided through Boat Association Insurance Services, license #0H87086. GEICO is a registered service mark of Government Employees Insurance Company, Washington, DC 20076; a Berkshire Hathaway Inc. subsidiary. © 2019 GEICO





## 2019 MODEL CLEARANCE SALE! LOWEST PRICING ON FIVE REMAINING 2019'S

**1900 ES • \$35,300**



**35 Sport Coupe • \$329,900**



**22 FASDECK • \$62,500**



**26 XO • \$122,900**



**23 OBX • \$75,300**



**Sheltered Cove**  
MARINA  
Sales • Service • Slips • Storage

910 S. Green St.  
Tuckerton, NJ 08087  
**609-296-9400**  
[www.shelteredcovemarina.com](http://www.shelteredcovemarina.com)



*Just 4 Miles Off Exit 58 on GSP*

**Fishin' Boats From  
Fishin' Folks**

# SUMMER SAVINGS!



**\$59,995**

**2016 May-Craft 23 Cabin XL**  
Yamaha F200XB



**\$99,500**

**2003 Hydra-Sports 3300CC**  
2007 Yamaha Triple F250, Tri Axle Aluminum Bunk Trailer



**\$49,995**

**2004 Pursuit 265 Denali LS**  
Twin 2004 Yamaha F200TXRC

**Priced  
to Sell!**



**\$50,000**

**2009 May-Craft 2550 Pilot XL**  
Yamaha LF250XTR, 2017 Load Rite Trailer



**\$115,000**

**2018 Key West 261 Billistic**  
Yamaha F200XCA & LF200XCA



**\$19,995**

**2017 Key West 197 SK**  
Yamaha F90LB

# GOOTEE'S MARINE

South of Cambridge On Maryland's Eastern Shore  
1439 Hooper's Island Road, Church Creek, Maryland



**800-792-0082**  
**Gootees.com**



NEW  
DAGSBORO  
STORE  
NOW OPEN!

NEW  
DAGSBORO  
STORE  
NOW OPEN!

# JEANNEAU

JEANNEAU 9.0 LEADER CC



JEANNEAU 895 POCKET CRUISER



JEANNEAU 795 POCKET CRUISER



## BLACKFIN

212 CC



\$CALL

242 CC



\$CALL

272 DC



\$CALL

272 CC



\$CALL

## NauticStar®

2602 CC

CLOSEOUT!



22 XS



CLOSEOUT!

243 DC

CLOSEOUT!



223 DC



CLOSEOUT!

## CREST

220 SF

LIQUIDATION!



220 SLC

LIQUIDATION!



LIQUIDATION!



220 L

200 SF

LIQUIDATION!



**Rudy Marine.com**  
Where Family Boating Begins

Delaware has  
**NO SALES TAX!**  
2 GREAT LOCATIONS!

**YAMAHA**  
REPOWER  
HEADQUARTERS

302-945-2254 • 32606 DuPoint Blvd Dagsboro, DE 19969

f 302-999-8735 • 411 S. Maryland Ave. (Rt 4) Wilmington, DE 19804







New Dealer  
for: **Quest**  
PONTOONS

**CAROLINA**  
**SKIFF**



**ALUMA**  
*Craft*



Powered by:

**SUZUKI**  
MARINE

**SEA**  
**CHASER**  
By: Carolina Skiff, Inc.



**DANNY'S MARINE**  
**(410) 228-0234 • www.dannysmarine.com**  
Located on US Rt 50 (mile marker 86) • Chateau Drive near Linkwood, MD  
**dannysmarine@comcast.net**

Limited Time Offers. Not all models qualify. See Participating Suzuki Marine dealer for details or visit [www.suzukimarine.com](http://www.suzukimarine.com)  
©2018 Suzuki Motor of America, Inc.



## Goldsborough's Marine

709 W. Main St., Crisfield Maryland  
Ph.# 410-968-0852 Email [merc71@verizon.net](mailto:merc71@verizon.net)  
"Where Happiness Is Just A Boat Ride Away!"  
[www.crisfield.com/gold](http://www.crisfield.com/gold)



## Spring Into Summer Specials!



**18' Hunters Special CC Pkg**  
Mercury 90hp ELPT 4-stroke,  
EZ Loader trailer,  
freight, prep, rigging & test  
**\$25,540**



**23' Center Console T-Top Pkg**  
Mercury 200hp XLPT 4-stroke,  
EZ Loader galv trailer,  
freight, prep, rigging & test,  
**\$45,895**



**222 Sport Cabin Pkg**  
Mercury 150hp XLPT 4-stroke,  
EZ Loader galv trailer,  
freight, prep, rigging & test,  
**\$54,075**

**The Best Ships Store on Delmarva • Open All Year**  
**Maryland's C-Hawk Dealership since 1981**



# Beacon Light Marina

**(410) 335-6200**

825 Bowleys Quarters Rd • Middle River, MD

[www.beaconlightmarina.com](http://www.beaconlightmarina.com)



**YAMAHA**  
Boats



Powered by  **YAMAHA**

**2019 210 FSH Sport**



**2018 25 Cabin XL**



**2019 242X E-Series**



**2018 2550 CCX**



**2019 AR195**



**2019 23 Cape Classic**





# CLARKS FLOATS

**Custom Floating Docks**

**443-871-0436 • CLARKSFLOATS@GMAIL.COM**

**CLARKS FLOATS  
PIER & PILE**

- **Floating Docks**
- **Pile Driving**
- **Re-Decking**

**MMCLB #390 I**



**8x16 KAYAK DOCK**



**8x12 KAYAK ACCESS**

**Any Custom  
Size Float  
Available!**



**Kayak Floats**  
**Dock Sections • Work Rafts**  
**Swim Platforms • Gang Planks**  
**SS Fasteners • #1 P.T. Lumber**  
 Perma Float Floats  
 Composite Decking

**Deale, MD**



# NORTH EAST RIVER MARINA

**Slips, Service,  
Boat Rentals &  
Charters on Site!**

**410.287.5298**

**724 Water Street • Charlestown, MD 21914**

**1993 Regal  
252 Commodore,**  
 '13 Merc 5.0L,  
 28 hrs, Alpha drive,  
 very clean, full galley,  
 fresh water only,  
 1993 D/A trl, GPS,  
**\$9,999**



**1998 Bayliner 2052 LS Cuddy,**  
 4.3L engine 190hp w/Alpha drive, 40+ MPH,  
 S/A trl, fresh water boat, 200 hrs, **\$8,995**



**2003 Bayliner 245,** 5.0L Merc w/Alpha drive,  
 290 hrs, very spacious, GPS, new D/A Venture trl,  
 fresh water boat, runs great, **\$Call**



**1978 Trojan F-25 Express,** S/Crusader  
 228 IB, new holding tank & hot water heater,  
 fully detailed, a must see, priced to sell, **\$Call**



**2000 Stingray 240 CS,** bimini, marina cover,  
 camper encl, batt charger, inverter, Garmin GPS/  
 CP, micro, fridge, 2014 T/A Venture trl, **\$16,999**



**2005 Formula 34PC,** Merc 8.1L w/BIII, 49  
 MPH, 269 hrs, gen, 2 fridges, fresh water only,  
 very good condition, too much to list, **\$135,000**



**MIDLANTIC  
MARINE  
CENTER**  
**302-436-BOAT (2628)**

**YOUR EXCLUSIVE WELLCRAFT DEALER ON DELMARVA!**

**Closed Sun & Mon • Tues-Fri 8AM-4:30PM • Sat 8AM-4PM**

**36624 DuPont Boulevard Selbyville, DE**

**www.midlanticmarinecenter.com**

**Wellcraft®**

**Spring Fling  
Sales Event!**

Includes  
Trailer



**2018 Wellcraft 202 Fisherman (WEL05S)**  
Yamaha F150XB 4-stroke • **MSRP \$51,115**  
**Spring Fling Sale Price ONLY \$40,998**

Includes  
Trailer



**2018 Wellcraft 202 Fisherman (WEL11S)**  
Yamaha F150XB 4-stroke • **MSRP \$51,115**  
**Spring Fling Sale Price ONLY \$39,952**



**2019 Wellcraft 202 Fisherman (WEL02T)**  
Mercury 150 4-stroke • **MSRP \$58,249**  
**Spring Fling Sale Price ONLY \$39,963**



**2018 Wellcraft 222 Fisherman (WEL06S)**  
Yamaha F250XCA • **MSRP \$81,022**  
**Spring Fling Sale Price ONLY \$59,996**



**2018 Wellcraft 222 Fisherman (WEL07S)**  
Yamaha F250XB • **MSRP \$73,261**  
**Spring Fling Sale Price ONLY \$54,464**



**2019 Wellcraft 222 Fisherman (WEL01S)**  
Yamaha F250XCA • **MSRP \$83,911**  
**Spring Fling Sale Price ONLY \$59,917**



**2018 Wellcraft 242 Fisherman (WEL09S)(2)**  
Yamaha F200XCA • **MSRP \$133,232**  
**Spring Fling Sale Price ONLY \$89,661**



**2019 Wellcraft 242 Fisherman (WEL03T)**  
Twin Yamaha F150XB • **MSRP \$105,706**  
**Spring Fling Sale Price ONLY \$83,438**



**2019 Wellcraft 262 Fisherman (WEL04T)**  
T/Yamaha F250XCA • **MSRP \$163,627**  
**Spring Fling Sale Price ONLY \$119,620**



**2019 Wellcraft 302 Fisherman (WEL01T)**  
T/Yamaha F300 Offshore • **MSRP \$221,680** • **Spring Fling Sale Price ONLY \$159,903**

**LOAD-RITE**

Discount  
Trailer  
Sales!



**3 YEARS OF WINTER STORAGE**  
All prices include freight, prep, prep(s), battery(s), 1/2 tank of gas, in-water demo,  
local delivery, basic safety package & 3 years of storage!

\*Includes all rebates and incentives. Trailer available at additional cost.



**MIDLANTIC  
MARINE  
CENTER**  
**302-436-BOAT (2628)**

**YOUR EXCLUSIVE STARCRAFT PONTOON & DECK BOAT DEALER ON DELMARVA**

**Closed Sun & Mon • Tues-Fri 8AM-4:30PM • Sat 8AM-4PM**

**36624 DuPont Boulevard Selbyville, DE**

**www.midlanticmarinecenter.com**



**STARCRAFT**  
MARINE

**"HIT THE  
DECK"  
SALES EVENT**



**\$2000 IN  
SAVINGS!**

**2018 Starcraft Limited 1915OB (ST39S)**  
Yamaha F115 4-stroke • **MSRP \$34,571**  
Only \$27,563 after all discounts\*



**\$2500 IN  
SAVINGS!**

**2018 Starcraft MDX 191OB (ST21S)**  
Yamaha F115 4-stroke • **MSRP \$37,519**  
Only \$29,732 after all discounts\*



**BELOW  
COST!**

**2017 Starcraft MDX 211E OB (ST25R)**  
Mercury 150hp 4-stroke • **MSRP \$49,312**  
Only \$35,597 after all discounts\*



**\$1500 IN  
SAVINGS!**

**2019 Starcraft Limited 1915 OB (ST21T)**  
Yamaha F115LB • **MSRP \$35,013**  
Only \$28,771 after all discounts\*



**\$1750 IN  
SAVINGS!**

**2019 Starcraft Limited 2000 OB (ST19T)**  
Yamaha F150LB • **MSRP \$40,486**  
Only \$31,862 after all discounts\*



**\$7000 IN  
SAVINGS!**

**2018 Starcraft 230 SCX OB (ST09S)**  
Yamaha F250 4-stroke • **MSRP \$70,676**  
Only \$59,395 after all discounts\*



**\$2500 IN  
SAVINGS!**

**2018 Starcraft MDX 211OB (ST22S)**  
Mercury 150hp 4-stroke • **MSRP \$43,160**  
Only \$35,567 after all discounts\*



**BELOW  
COST!**

**2018 Starcraft MDX 211CC OB (ST06S)**  
Yamaha F200 4-stroke • **MSRP \$56,425**  
Only \$42,997 after all discounts\*



**\$5000 IN  
SAVINGS!**

**2018 Starcraft MDX 231 E OB (ST38S)**  
Yamaha F200 4-stroke • **MSRP \$60,661**  
Only \$47,434 after all discounts\*

**NOW STOCKING ALUMINUM FISHING PACKAGES!**



**2018 Starcraft Patriot 16 (ST24S)**  
Mercury 30hp tiller, trailer incl • **MSRP \$14,970**  
Only \$12,498 after all rebates



**2019 Starcraft Stealth 166SC (ST28T)**  
Yamaha F60LB 4-stroke • **MSRP \$23,740**  
Only \$19,782 after all rebates\*



**2019 Starweld by Starcraft 16 Fusion Pro (ST12T)**  
Mercury 90 4-stroke • **MSRP \$26,994**  
Only \$23,947 after all rebates\*

**3 YEARS OF WINTER STORAGE**

**All prices include freight, prep, prep(s), battery(s), 1/2 tank of gas, in-water demo,  
local delivery, basic safety package & 3 years of storage!**

\*Includes all rebates and incentives. Trailer available at additional cost.



# VENTURE

## TRAILER SALE

Buy At Our Cost  
Over 25 Trailers  
In Stock

**MUST  
GO!**

We are overstocked with new trailers  
sizes from 22' to 26'

All aluminum with galvanized wheels!

**GRANDE YACHTS**  
INTERNATIONAL

Grasonville, MD

**410-286-1350**

## DUFFY CREEK MARINA

*"the Sheltered Harbor on the Sassafra's"*

SHIPS  
STORE

**A FULL SERVICE MARINA**

GAS &  
RAMP

Offering Direct Access to the Bay  
We Continue to Add Improvements While Offering  
you Quality Marine Services at Affordable Prices.

**We Revamped  
Our Ramp!**

Launching Ramp Ready for  
Your Spring Launching!

**CALL NOW  
TO RESERVE  
YOUR 2019  
SUMMER SLIP!**

**(410) 275-2141**

email: [duffy@duffycreekmarina.com](mailto:duffy@duffycreekmarina.com)

[www.duffycreekmarina.com](http://www.duffycreekmarina.com)



**Crusader**  
ENGINE

**VOLVO PENTA**  
**KOHLER**



**Factory  
Direct  
Pricing**

**FORMULA**



**Call for  
a Test  
Ride**

*Hurricane*



**GODFREY**

**PRE OWNED BOATS**

CHECK OUT OUR WEBSITE FOR MORE LISTINGS



**2008 Marigo FS35**  
**\$99,500**



**2016 Monterey 335 SV**  
**\$198,000**

**RHODE RIVER**  
**BOAT SALES**

**3932 GERMANTOWN RD**  
**EDGEWATER, MD, 21037**



**410-798-1658**



**[rhoderiverboatsales.com](http://rhoderiverboatsales.com)**





BAY BRIDGE  
MARINA PROPERTY

# UP TO 50% OFF ANNUAL SLIP FEE

With a multi year slip  
agreement! ★

- \* FLOATING DOCKS \* 25-70 TON TRAVEL LIFTS
- \* FUEL DOCK & PUMP \* FULL SERVICE YARD
- \* FITNESS CENTER & SAUNA \* WIFI & CABLE
- \* HEMINGWAY'S RESTAURANT & TIKI BAR

410.643.3162  
WWW.BAYBRIDGEMARINA.COM  
357 PIER ONE ROAD,  
STEVENSVILLE, MD 2166

★ This is an introductory offer and is only  
available to first time BBM slip holders.

BEST  
VALUE ON THE  
BAY!





## ADVERTISERS INDEX

ALMARS.....	13	GOLDSBOROUGH'S MARINE .....	17
ANCHOR BOATS.....	36	GOOD AUTOMATIC WINDLASS .....	34
ANNAPOLIS CRUISAIR.....	10	GOOTEE'S MARINE .....	15
BALTIMORE BOATING CENTER .....	4	GRANDE YACHTS.....	23
BAY BRIDGE MARINA.....	23	LEE'S MARINA.....	25
BEACON LIGHT MARINA.....	18	LIPPINCOTT MARINE .....	3
BOAT LIFTS UNLIMITED.....	24	LIST YOUR BOAT .....	34
BOAT N RV.....	11	MEARS POINT YACHT SALES .....	5
CAPTAINS LICENSE CLASS.....	34	MIDLANTIC MARINE .....	20-21
CLARKS FLOATS .....	19	NORTH EAST RIVER MARINA.....	19
CLARKS LANDING .....	35	PORT SIDE MARINE .....	25
CURTIS STOKES.....	8, 26	RHODE RIVER BOAT SALES .....	22
CUSTOM REBUILT CARBURETORS.....	34	RIVERSIDE MARINE .....	2
DANNY'S MARINE.....	17	RUDY MARINE .....	16
DOMINION YACHTS.....	6	SASSAFRAS HARBOR MARINA YACHT SALES ..	9
DRB MARINE.....	25	SHELTERED COVE MARINA.....	11, 15
DUFFY CREEK MARINA .....	24	STOLTZFUS MARINE.....	12
EGG HARBOR ROPES.....	34	UPPER CHESAPEAKE YACHT SALES .....	7
GEICO.....	14	WATERFRONT.....	27

## THE LARGEST LOW PROFILE BOAT LIFT MANUFACTURER IN THE USA

**CALL  
US FOR  
YOUR LOCAL  
DEALER!**



### Choose The Right Boat Lift, Choose

- Low Profile Design • Low Maintenance • 2/5 Yr Warr.
- Outside Walkway • Galvanized Steel Construction
- Aluminum Cradles Available • Capacity 800-40,000 lbs. [www.magnumlift.com](http://www.magnumlift.com)

**MAGNUM**  
**BOAT LIFTS**  
Personal Watercraft Lifts

Fully  
Insured

**BOAT LIFTS UNLIMITED**  
**410-674-3100 • 1-800-268-5911**

**WE SERVICE  
MOST MAKES  
OF BOAT  
LIFTS!**

Located in Odenton, MD, this full-service boat lift manufacturer has a network of over 180 distributors serving the Chesapeake Bay, Great Lakes and Atlantic Coast with Magnum Boat Lifting Products. Boat Lifts Unlimited is dedicated to customer satisfaction through prompt, courteous service on most existing boat lifts and timely installation of new boat lifts. Quality materials, attention to detail and innovative design have made Boat Lifts Unlimited one of the largest boat lift manufacturers in the U.S.





732-691-1216 www.DRBMarineLLC.com



**MARINE MAT**  
Marine Decking Solutions

**CLEAN USED SPORT BOATS WANTED!** **Small Used Outboards Available!**

**PORT SIDE MARINE**  
NEW • USED • BROKERAGE • MARINE ACCESSORIES

 22' '99 Shamrock 220 Open, 5.7L 260hp Crusader, VHF, GPS, DF/FF, radar, \$17,500	 26' '98 Grady White 268 Islander, 50hp Mercury 2-stroke OB, VHF, GPS, DF/FF, trolling motor, \$24,995	 18' '05 Key Largo 180 CC, 90hp Yamaha 2-stroke, DF/FF, trailer, \$7,995
 16' '04 Tracker Boats Pro Guide V-16, 50hp Mercury 2-stroke OB, VHF, GPS, DF/FF, trolling motor, \$5,495	 18' '98 Sunbird 180 Neptune, 90hp Johnson 2-stroke OB, galv roller trailer, \$6,495	 23' '03 Crownline 230 CCR, Volvo 5.7L I/O, 250hp, full encl canvas, cockpit cover, 2003 trailer, \$13,995

**ALUMACRAFT** **LINE**  
JON BOATS  
10' TO 20'  
FROM ONLY  
**\$795**

**VENTURE**  
Trailers

**LOADRITE**  
Trailers

**149 Back River Neck Rd. • Essex, MD**  
**410-682-2998**  
**www.portsidemarine.net**

**Lee's Marina**  
Located on the beautiful North East River

**CALL TODAY TO RESERVE YOUR 2019 SLIPS!**

**(410) 287-5100**  
726 Water St • Charlestown, MD  
**lmarina726@comcast.net**

 <b>2004 23' Sea Fox,</b> 2006 Mercury 225hp Outboard, <b>\$23,500</b>	 <b>1998 32' Proline 3250,</b> Twin 330hp Mercs, gen, AC/HT, tuna tower w/controls, <b>\$30,000</b>
--	---

**COMPLETE SALES & SERVICE FACILITY**

<b>OUTDRIVES</b> Volvo/Penta Mercruiser	<b>OUTBOARD MOTORS</b> Mercury • Yamaha Johnson/Evinrude
---	--

**INBOARDS • INBOARDS/OUTBOARDS**  
GENERATOR REPAIR

**Start Your Season Out Right! Call Now To Be Ready For Summer!**

 <b>1988 24' Four Winns Liberator,</b> S/340hp Ford, 2 anchors, canvas covers, mufflers, radio, DF, t-tabs, swim platform, more, <b>\$6,900</b>
 <b>1997 20' Starcraft SS Limited,</b> 5.7L Chevy, canvas cover, swim platform, upholstery redone, AM/FM/CD, low hours, trl, <b>\$9,500</b>

Visit our Website at [www.LeesMarina.com](http://www.LeesMarina.com)



## List your boat with us and join our **SOLD** list!



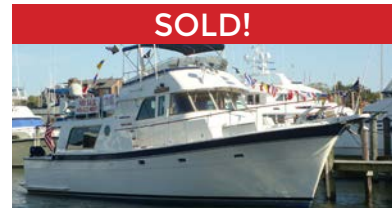
**SOLD!**

2002 55' Ocean Alexander



**SOLD!**

2001 54' Sea Ray



**SOLD!**

1978 48' Hatteras LRC



**SOLD!**

2000 47' Bayliner



**SOLD!**

1998 44' DeFever



**SOLD!**

1976 43' Gulfstar



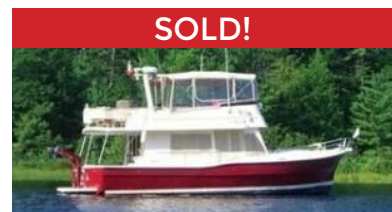
**SOLD!**

2004 43' Mainship



**SOLD!**

2003 42' Sealine



**SOLD!**

2004 40' Mainship



**SOLD!**

1986 38' Ocean



**SOLD!**

2008 37' Mariner Seville



**SOLD!**

2006 37' Campbell

To see more details about these and all other yachts around the globe, please visit our website below.

Annapolis, MD • St. Michaels, MD • Deltaville, VA • Woodbridge, VA  
Telephone: 410.919.4900 • Email: [info@curtisstokes.net](mailto:info@curtisstokes.net)

**[www.curtisstokes.net](http://www.curtisstokes.net)**





**#1 GOLL AVE, SOMERS POINT, NJ ~ 609-926-1700**  
**281 PRINCETON AVE, BRICK, NJ ~ "Featuring" 732-202-6961**  
 Chaparral & Carver  
**2822 SOLOMON'S ISLAND RD, EDGEWATER, MD ~ 443-949-9041**

*Premium Brands ~ Exceptional Service*

**WWW.WATERFRONTMARINE.COM**



**- PREOWNED BOATS -**



**20' '07 Cobalt 200 BR,  
5.0L Volvo GXI, 480 hrs. \$24,900**



**24' '18 Chaparral 246 SSi,  
6.2L Merc, Garmin, 63 hours, \$77,900**



**19' '17 Yamaha AR195,**  
1.8L SV HO Jet motor, like new, trl. **\$28,900**

30' '16 Chaparral 307 SSX, T/Volvo Penta 300hp, loaded.....	Pending
28' '15 Chaparral 287 SSX, Volvo Penta 430hp DP, loaded .....	\$89,900
28' '04 Chaparral 280 SSI .....	\$32,900
28' '09 Chaparral 284 .....	\$59,900
28' '11 Chaparral 284 Sunesta, Volvo 8.1L .....	\$69,900
26' '14 Chaparral 264 Sunesta, Volvo Penta 5.7L 320hp DP.....	\$77,800
25' '06 Chaparral 256 SSX .....	\$24,900
24' '13 Chaparral 246 SSI .....	Pending
24' '15 Hurricane 2486 Deckboat, Yamaha F250 .....	SOLD
23' '01 Bayliner 232 Capri, 5.0L Merc .....	\$8,500
23' '00 Chaparral 230 SSI .....	\$14,900
23' '05 Four Winns 234 Funship .....	\$16,900
22' '13 Stingray 225 LR Bowrider, Mercruiser 4.3L MPI, no bottom paint .	Pending
22' '16 Chaparral 224 Sunesta, 280hp Volvo .....	\$51,900
22' '09 Chaparral 226 .....	Pending
22' '06 Sea Ray 220 .....	\$18,900
21' '05 Ebbtide 21BR .....	\$12,900
20' '17 Chaparral 203 Vortex Jet Boat .....	Pending
20' '04 Four Winns 20 Horizon .....	\$11,900
20' '07 Cobalt Bowrider .....	\$24,900
20' '06 Sea Ray 200 Sundeck .....	\$22,900
19' '01 Chaparral 196 SSI .....	\$8,600
19' '01 Chaparral 196 SSI .....	\$10,500
19' '06 Sea Doo Speedster, wakeboard arch, T/215 Rotax Jet .....	\$17,900
18' '00 Chaparral 180 .....	\$6,900
18' '02 Four Winns 180 .....	\$9,900
18' '98 Bayliner 185 Capri .....	\$3,900
18' '07 Sea Ray 185 Sport, 3.0L Merc .....	\$12,900
17' '02 Sea Ray 176 Bowrider, 3.0L Merc, trailer .....	\$8,900
<b>CRUISERS &amp; CUDDY CABINS</b>	
31' '07 Sea Ray 310 Sundancer .....	\$89,780
27' '11 Chaparral 270 Signature, Volvo Penta 5.7 GI DP.....	SOLD
27' '04 Maxum 2700 .....	Pending
25' '06 Chaparral 255 Cuddy, Mercruiser 6.2 320 Bill.....	Pending
24' '07 Sea Ray 240 Sundancer, 5.0L Merc .....	\$19,950
24' '01 Sea Ray 245 Weekender .....	\$16,900
23' '88 Chaparral 235XLC, 5.7L Merc .....	\$7,900
23' '99 Rinker 23, 5.7L Merc .....	\$13,999
21' '17 Chris Craft Capri 21 .....	\$83,800
<b>FISHING BOATS</b>	
32' '08 Seacraft 32 CC, T/250hp E-Tecs, trailer .....	\$79,900
27' '05 Robalo R227 .....	SOLD
25' '01 Sea Pro 225 .....	\$23,900
25' '16 Tidewater 252 Center Console, T/Yamaha F150s, Venture trailer....	\$79,900
24' '15 Robalo R242, Yamaha F300 w/30 hours .....	\$69,900
24' '14 Robalo 240 CC, F300 Yamaha, loaded .....	\$69,980
24' '17 Robalo 246 Cayman, Yamaha F300, trailer .....	\$79,500
24' '10 Robalo R245 .....	SOLD
21' '04 Hydrasport 212 WA, Yamaha F150 .....	\$14,900
20' '17 Stingray 210 DC .....	\$33,900
18' '01 Boston Whaler 18 Dauntless .....	Pending
17' '03 Boston Whaler 17 Montauk CC, 90hp Mercury .....	\$13,500

## FISHING BOATS



**AUTHORIZED  
PARTS &  
SERVICE**



**Full Service  
Marina w/Slips &  
Racks Available!**

# ALL PRINT ADS INCLUDE FREE INTERNET LISTING\*

## PRIVATE AD RATES

- ☐ INTERNET ONLY UP TO 1 YEAR..... \$39<sup>00</sup>
- ☐ 3 ISSUES WITH COLOR PHOTO  
WITH COLOR PHOTO ON INTERNET..... \$49<sup>00</sup>
- ☐ INTERNET FEATURE ADD ON 4 WEEKS  
**AVAILABLE WITH AD PURCHASE ONLY!**  
ON THE SALTY DOG HOME PAGE..... \$49<sup>00</sup>
- ☐ FRONT COVER..... \$40<sup>00</sup>
- ☐ PUBLICATION MAILED TO YOU..... \$2<sup>00</sup>

## TOTAL

FRONT COVERS ARE BASED ON AVAILABILITY

- ☐ CHECK ☐ MONEY ORDER ☐ DISCOVER  
☐ MASTERCARD ☐ VISA ☐ AMERICAN EXPRESS

CC#

Expiration Date \_\_\_\_\_ Security Code \_\_\_\_\_

Signature \_\_\_\_\_

Advertiser's Name .....

Address .....

Phone .....

Where did you pickup "The Salty Dog"?

Store \_\_\_\_\_ Town \_\_\_\_\_

\*Internet Listing For One Year.

No refunds after Ad is processed. • Advertiser will be responsible for \$20 fee on returned checks.

**YOUR BOAT LISTING CAN ALSO BE SUBMITTED ON THE INTERNET [www.thesaltydog.com](http://www.thesaltydog.com)**

Fill out the description form below, up to 125 characters (including spaces & punctuation) of advertising. Please put one character per space beginning with the motor. Include a check, money order or credit card, and mail to us with a good quality COLOR picture of your boat. Photos will only be returned if accompanied by a self-addressed stamped envelope.

## AD COPY

FT. \_\_\_\_\_ YR. \_\_\_\_\_

MANUF. / MODEL \_\_\_\_\_

MOTOR \_\_\_\_\_

ACCESSORIES \_\_\_\_\_

LOCATION OF BOAT \_\_\_\_\_, \_\_\_\_\_ State \_\_\_\_\_ Zip Code \_\_\_\_\_

PRICE \_\_\_\_\_

PHONE # \_\_\_\_\_

EMAIL \_\_\_\_\_

**Send to: The Salty Dog  
254 Brick Blvd • Suite 1  
Brick, NJ 08723**

**888-843-1585**

Fax (732) 477-9000 • Email: [info@thesaltydog.com](mailto:info@thesaltydog.com)

## SPECIAL FEATURES

PRIVATE BOAT ADS  
Pgs. 29-33

## SUBSCRIPTION CHESAPEAKE BAY

No. of issues \_\_\_\_\_ x \$2.00\* = Total Cost \_\_\_\_\_

- ☐ CHECK ☐ MONEY ORDER ☐ MASTERCARD ☐ VISA

Credit Card No. \_\_\_\_\_

Exp. Date \_\_\_\_\_

Signature \_\_\_\_\_

SALTY DOG is published Bi-weekly 25 times a year.

Papers are mailed **FIRST CLASS**. Your first issue will be mailed within 1 week.

To subscribe, just fill in the amount of issues and multiply by \$2.00\*

Name \_\_\_\_\_

Address \_\_\_\_\_

City \_\_\_\_\_ State \_\_\_\_\_ Zip \_\_\_\_\_

Telephone \_\_\_\_\_

\*Canada Subscription Add 10% - Bermuda Subscription Add 30%  
Outside the Continental USA Add 50% • Credit Cards Only Outside USA



Mail To: THE SALTY DOG, 254 Brick Blvd • Suite 1, Brick, NJ 08723



A Bi-weekly Publication for  
Powerboats, Sailboats, Marine  
Equipment, Supplies, Services,  
Waterfront and Photo Ads

For More Info on Display Ads or Internet Listings

Call 888-843-1585 • Fax (732) 477-9000

[info@thesaltydog.com](mailto:info@thesaltydog.com) • Mon.- Fri. 9:00 am to 4:00 pm



See Color Photo on the Internet



**46' 1990 SILVERTON**  
**46 Aft Cabin,**  
 GM 6-71 Ti's, the finest 46 Silverton w/many upgrades, low time on engines since major. Ready to cruise to Bahamas, Fla Keys or live-aboard. More photos at [www.46silverton.com](http://www.46silverton.com)  
**\$110,000**  
**954-553-0887**  
**redfoxdiner**  
**@att.net**

147669

See Color Photo on the Internet



**41' 1998 SILVERTON**  
 Twin 502 Fuel injected Crusaders, 8 kw Generator,  
 2 Staterooms, Davit w/ 10' Dingy w/5hp, Turn-key, Very Nice Shape! Must sell  
**\$74,900**  
**732-278-6303**  
**kskarchitect@**  
**aol.com**

145945

See Color Photo on the Internet



**33' 2008 SEA RAY 330 SUNDANCER**, T/8.1L Merc FWC Inboards, AC/HT, gen, bow thruster, motivated seller, **\$119,995**, 732-840-1100 [brennanboat@aol.com](mailto:brennanboat@aol.com) **143789**

See Color Photo on the Internet



**33' 2000 PRO-LINE 33 EXPRESS**, Mercruiser 7.4L 380hp, runs great, Kohler 7.3 kW gen, **\$64,500**, 732-899-8010 [sales@schraderyachts.com](mailto:sales@schraderyachts.com) **144830**

See Color Photo on the Internet



**32' 2004 MABRY CUSTOM SPORTFISH**, Volvo 310A Dsl, Outdrive, 1250 hrs, clean, runs great/fast, windlass, AC/HT, 2 stations, bow thruster, inverter, more, **\$95,000**, 410-867-6120 [midcoasttom@comcast.net](mailto:midcoasttom@comcast.net) **147234**

See Color Photo on the Internet



**46' 1995 WELLCRAFT 46 CPMY**, Twin CAT 3208 Turbo diesels 1500 hrs. 9K Westebake Genset -2 stateroom, 2 bath, full galley, 2/16Kbtu marine air, **\$105,000 • 804-543-1367**  
**Liberaleave@verizon.net**

147583

See Color Photo on the Internet



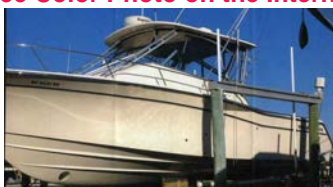
**38' 1959 CUSTOM BUILT Deltaville Deadrise**, Twin Merc. 454, Sweet Classic 38' 1959 Deltaville Deadrise. There isn't much on this boat that has not been upgraded or replaced, very good condition, **\$25,000**, 240-533-7121 [deadrise38@gmail.com](mailto:deadrise38@gmail.com) **146944**

See Color Photo on the Internet



**34' 1983 SILVERTON Convertible**, 2 - 250HP Crusaders, 1983 34' Silverton Convertible. Boat is turn key and runs excellent. A/C and Heat work. 250HP Crusaders., **\$10,500**, 240-417-5171 [Humphreycd@gmail.com](mailto:Humphreycd@gmail.com) **147674**

See Color Photo on the Internet



**33' 2006 GRADY-WHITE 33 EXPRESS**, T/Yamaha 250hp 4-strokes, gen, complete Raymarine equip, autopilot, ORs, full salon enclosure, lift kept, bow thruster, **\$129,900**, 410-596-8694 [hbarnes46@gmail.com](mailto:hbarnes46@gmail.com) **146234**

See Color Photo on the Internet



**32' 2004 CENTURY 3200 CENTER CONSOLE**, New 300s digital Yamahas, 20K in new electronics, 85k in upgrades, **\$89,950**, 908-489-5098 [seaportpics@gmail.com](mailto:seaportpics@gmail.com) **147387**

See Color Photo on the Internet



**32' 2003 CHAPARRAL 320 SIGNATURE**, 2013 T/5.7L Merc FWC BIII, electronics, cockpit cover, very clean, **\$56,000**, 732-269-3700 **145013**

See Color Photo on the Internet



**42' 1994 SEA RAY 400 Express**, 7.4 - NEW, Great Opportunity The Engines are 2 Yrs old out of crate - not rebuilt. 15 hrs on the engines but She needs some clean-up, **\$35,000 • 856-857-1800**  
**kwallace@hudview.com**

146367

See Color Photo on the Internet



**31' 2010 SEA RAY 310 SUNDANCER**, optional T/Merc 5.7L FWC MPI, GTS, Axis Bravo IIs, AC/HT, gen, GPS/plotter, motivated seller, **\$123,995**, 732-840-1100 [brennanboat@aol.com](mailto:brennanboat@aol.com) **143327**

**See Color Photo on the Internet**

**31' 1988 PACEMAKER Sportfish**, 2 Mercruiser F/W cooled 305, Well maintained updated boat runs great. New upholstered interior. AC, Heat, electric head, fridge, shower, water heater, \$17,000, 410-707-7596 Rtb212@comcast.net 146737

**See Color Photo on the Internet**

**29' 2009 WORLD CAT 290 DC**, T/F250 Yamahas, 375 hours, new Eisenglass, full electronics w/radar, \$115,000, 732-899-8010 sales@schraderyachts.com 144827

**See Color Photo on the Internet**

**28' 2003 GRADY-WHITE 283 RELEASE**, Dual Yamaha F225hp OBs, Vantage T/A galv trailer, apexox 1100 hrs, radar, GPS, echo finder, CP/FF, VHF, t-top, \$64,900, 732-929-1711 Tom@hobbylobbymarine.com 147078

**See Color Photo on the Internet**

**30' 2012 SEA RAY 300 SLX**, T/350 Mags, Bili w/Axius, grill, low hours, motivated seller, \$91,995, 732-840-1100 brennanboat@aol.com 147075

**See Color Photo on the Internet**

**29' 2011 WORLD CAT 290 DC**, T/F250 Suzukis, 150 hours, Garmin 5212 w/radar, \$109,000, 732-899-8010 sales@schraderyachts.com 144826

**See Color Photo on the Internet**

**28' 2002 CHAPARRAL 280 SSI**, T/6.2L Mercruiser MPI, enclosed head, GPS/VHF, windlass, 525 hours, \$33,995, 732-840-1100 brennanboat@aol.com 147676

**See Color Photo on the Internet**

**30' 2000 CHAPARRAL Signature 300**, Excellent Cond, 185 hrs, Twin Merc 5.7L Efi-520hp-185hrs. Koehler Gen 38 hrs. New carb, New gas tank Outdrives 2017  
**\$32,999**  
**610-299-0955**  
**susandtimmins@comcast.net**

147082

**See Color Photo on the Internet**

**29' 2006 PROKAT 296WA**, Yamaha 250, Garmin electronics, GPS, depth finder, radar, VHF radio, refrigerator, windless, aluminum trailer, new 6 wheel disc brakes, \$95,000, 443-336-3502 rschmidt8888@gmail.com 146963

**See Color Photo on the Internet**

**28' 1998 MAKO 293 Walkaround**, (2) 225 Mercury, Starboard engine needs new power head; everything else good to excellent condition. Service docs available. Trailer included., \$12,000, 908-278-4166 Jeff.theibault@icloud.com 147128

**See Color Photo on the Internet**

**29' 1984 PHOENIX SF**  
 Crusader Capt Choice  
 5.7MPI, 29 Phoenix re-powered in 2007, also new gas tanks, nee trans, new steering, new wiring, new electronics. Must see!

**\$16,000**  
**908-296-6797**  
**piperirv@gmail.com**

147594

**See Color Photo on the Internet**

**27' 1998 GRADY-WHITE 272 SAILFISH**, Dual 1998 Mercury 225hp Optimax OBs, hardtop w/encl, electric head, battery charger, livewell, salt water washdown, GPS/map/sounder, stereo, windlass, \$39,500, 732-929-1711 Tom@hobbylobbymarine.com 146726

**See Color Photo on the Internet**

**27' 1997 GRADY-WHITE 272**, 225 Yamahas, 225hp Yamahas, Radar, Fish finder, GPS, Outriggers, \$23,000, 302-245-7157 shortbus3384@msn.com 146697

**See Color Photo on the Internet**

**29' 2017 WELLCRAFT COASTAL**, T/Yamahas, only 30 hours, loaded, paid 240k, only used one summer, easy financing, trades welcome, \$189,000 OBO, 908-489-5098 seaportpics@gmail.com 147388

**See Color Photo on the Internet**

**27' 1995 RINKER Fiesta Vee**, Mercruisers, Fantastic first time/family boat. Full camper enclosure & comes with trailer too! Runs great and is very good shape., \$13,500, 717-309-4918 beckynelson.47@yahoo.com 147295



**See Color Photo on the Internet**

**26' 2016 CROWNLINE ESX6 DECK-SYTTLE BOW-RIDER**, 300 Pro Verado 4-stroke, under 100 hours, like new, Call Almars Outboards for details, **\$59,995**, 302-328-8541 [jaukamp@almarsoutboards.net](mailto:jaukamp@almarsoutboards.net)

**See Color Photo on the Internet**

**25' 2010 BOSTON WHALER 250 OUTRAGE**, T/200hp Verados, outriggers, electronics, **\$95,000**, 732-840-1100 [brennanboat@aol.com](mailto:brennanboat@aol.com) 147678

**See Color Photo on the Internet**

**24' 2000 PURSUIT 2470 CC**, Dual Yamaha Z-150 HPDIs, 800 Hours, ICOM M-521 VHF, Raymarine 5212 GPS/Map/Fish Finder and Prospect Stereo, **\$29,500**, 732-929-1711 Tom@hobbylobbymarine.com 147572

**See Color Photo on the Internet**

**26' 2002 COBALT 262 BOWRIDER**, Mercruiser 383 re-man w/warranty, new transom shield assembly, **\$35,900**, 732-899-8010 [sales@schraderyachts.com](mailto:sales@schraderyachts.com) 136197

**See Color Photo on the Internet**

**25' 2000 STAMAS Tarpon**, Extremely well built Stamas Yacht. Low hours, Twin 150 Yamaha Saltwater Series engines. 18 inch Garmin Screen and Radar. Trades accepted and financing available. **\$28,500**, 732-948-4228 [jmaterra77@gmail.com](mailto:jmaterra77@gmail.com) 138926

**See Color Photo on the Internet**

**24' 1995 WAHOO EFS**, 2006 225hp Mercury Verado 4-stroke, livewell, fresh water washdown, sink, stove, Garmin echomap SV, dual batts, radio, trl, **\$16,500**, 443-262-2718 [fish.legs@yahoo.com](mailto:fish.legs@yahoo.com) 147572

**See Color Photo on the Internet**

**26' 1999 SEA RAY 260 SUNDANCER**, Merc 260hp, **\$24,900**, 732-929-1711 Tom@hobbylobbymarine.com 147080

**See Color Photo on the Internet**

**25' 2001 AQUASPORT Osprey Tournament Master**, Twin Evinrude 150s, This has been a fantastic fishing boat, and family boat. This boat handles rough water very well, **\$24,000**, 804-525-0344 [tshoerichs@gmail.com](mailto:tshoerichs@gmail.com) 147028

**See Color Photo on the Internet**

**24' 1997 SPLENDOR Platinum**, 5.7 Mercruiser Bravo 3. SS Props, head, bimini, covers, trailer., **\$8,500**, 302-750-2637 [bfair111@hotmail.com](mailto:bfair111@hotmail.com) 147593

**See Color Photo on the Internet**

**25' 2015 WORLD CAT 255**, T/F150 Yamahas, 102 hours, full canvas enclosure forward and aft, well equipped, trailer, **\$132,500**, 732-899-8010 [sales@schraderyachts.com](mailto:sales@schraderyachts.com) 144831

**See Color Photo on the Internet**

**25' 1967 BERTRAM Flybridge**, twin 3 liter Merc Gen II engines, bridge enclosure, back mooring cover, full electronics, 6 man raft, EPIRB, great shape, must see, **\$21,000**, 908-770-4182 [Bkaelblein@comcast.net](mailto:Bkaelblein@comcast.net) 147723

**See Color Photo on the Internet**

**24' 1986 GRADY-WHITE Offshore**, 2000 Venture trailer(new 2000 used 2 summers) Not running, lots of parts. Merc 260 alpha 1, **\$3,150**, 717-222-0704 [tommytp55@icloud.com](mailto:tommytp55@icloud.com) 147220

**See Color Photo on the Internet**

**25' 2018 GRADY-WHITE 257 FISHERMAN • REDUCED!!!!**  
T/F150 Yamahas, 90 hrs, 7/23 warranty, all factory options, Garmin GPS radar, Icom fish inshore/offshore, family cruising, like new, in water, must see,  
**\$129,000**  
Call 302-226-3734 or 302-218-9325  
144975

**See Color Photo on the Internet**

**25' 1990 GRADY-WHITE TROPHY**, repowered w/Twin 1998 Yamaha carbureted 200hp 2-strokes, fuel tanks replaced in '19, GPS, AM/FM/CD, VHF, **\$19,900**, 609-927-5900 [robert@somerspointmarina.com](mailto:robert@somerspointmarina.com) 147680

**See Color Photo on the Internet**

**23' 2016 PARKER 23 SE**, Yamaha F200, leaning post, livewell, head in console, trailer, **\$57,500**, 732-899-8010 [sales@schraderyachts.com](mailto:sales@schraderyachts.com) 144824

**See Color Photo on the Internet**

**25' 2002 TROPHY 2509 CUDDY CABIN**, T/150hp Mercury 2-strokes, GPS, chartplotter, FF, VHF, i-tabs, hardtop w/enclosure, marine head, dinette, 2002 D/A trl, **\$14,900**, 609-927-5900 [robert@somerspointmarina.com](mailto:robert@somerspointmarina.com) 147679

**See Color Photo on the Internet**

**23' 2002 WELLCRAFT 22 Walkaround**, Johnson 175, Includes Bimini Top (1yr New), New Full size cover, Bottom painted, New Garmin 9" echomapSV fishfinder, Blue tooth waterproof speaker, **\$15,000**, 301-641-2860 [wayneo70@comcast.net](mailto:wayneo70@comcast.net) 147771



## See Color Photo on the Internet



**23' 2001 CENTURY 2300,**  
Gorgeous and well-equipped center  
console! Powered by a Yamaha 250!  
Lots of options!  
**\$14,500**  
**908-692-6255**  
**snorman412@gmail.com**

147346

## See Color Photo on the Internet



**22' 2000 SPORT CAT 221 WA,** 2001 175hp E-Tec,  
GPS/FF, trailer, everything works, runs great, **\$12,999,**  
**609-693-9423 tidesendmarina1@gmail.com 147076**

## See Color Photo on the Internet



**20' 2007 CENTURY 2001 CC,** F-150 TXR Yamaha OB,  
2013 Vneture galv bunk trl, VHF, GPS/Plotter/DF, VHF,  
**\$27,900, 732-929-1711 Tom@hobbylobbymarine.com 147079**

## See Color Photo on the Internet



**22' 2000 SEA RAY 215 Express Cruiser,** 5.0 Liter Merc Cruiser Alpha  
Gen II Outdrive, Very clean and professionally maintained with very  
low hours. It's ready to go cruising, great for water sports. Must see.,  
**\$10,500, 732-604-3450 Dorina459@gmail.com 147000**

## See Color Photo on the Internet



**20' 2000 HYDRA-SPORTS 212CC SeaHorse,** 150 HP Johnson  
Ocean Pro - always rinsed and serviced, Lowrance Electronics,  
Stored on trailer - trailer included, **\$8,800, 410-739-4114 little-houseceo@cs.com 146875**

## See Color Photo on the Internet



**22' 2003 CROWNLINE 225 BR,** 600 SCI Mercury Racing, 25  
hours, repowered 2012, 70 MPH, kept indoors, FRESH WATER  
ONLY, trailer, mint, Offers Encouraged!, **\$52,000, 215-259-1900**  
**donvan@autotraining.edu 146425**

## See Color Photo on the Internet



**22' 1994 AVENGER 220,** 1984 to 220 avenger 185 Horse  
Evinrude with trailer GPS and depth finder Engine com-  
pletely gone over carburetors rebuilt, **\$8,500, 410-977-8600**  
**george.tarantino@yahoo.com 147390**

## See Color Photo on the Internet



**19' 1994 BASS CAT BOATS Bass Cat,** 150 Mercury, Bass  
boat, runs great rebuilt 150 h.p. merc. Riptide Terrora 80lb  
thrust Humm. D.F. have all receipts deep hull - bay & river,  
**\$5,500, 301-807-5566 lwdrews@gmail.com 146969**

## See Color Photo on the Internet



**22' 2008 CHAPARRAL Sunesta,** 5.0 GXI-J, Bimini I/O Volvo  
DLP outdrive SS Duoprop 2017 EZ-Loader dual axle alum trailer  
Excellent condition Garage kept BUC report, **\$29,900, 717-201-8864**  
**rivernut007@comcast.net 146564**

## See Color Photo on the Internet



**21' 2018 GRADY-WHITE 216 FISHERMAN,** 250hp  
Yamaha, 81 hours, lift kept, spotless, loaded, **\$69,995,**  
**732-840-1100 brennanboat@aol.com 147677**

## See Color Photo on the Internet



**18' 2009 SEA HUNT TRITON,** 90HP 4-Stroke Ya-  
maha 250hrs, T-top and livewell, Center console,  
EXCELLENT CONDITION **\$16,900, 302-275-4712**  
**hansjwild@gmail.com 146736**

## See Color Photo on the Internet



**22' 2014 BENTLEY ELITE,** 2015 115hp evinrude etec, full canvas  
cover bimini tow bar stereo GPS/DF changing st. cap. chair swim  
platform 2 ladders alum. skin under floor, motor warr til 2021,  
**\$25,000, 301-938-5309 jkreamy@gmail.com 146908**

## See Color Photo on the Internet



**21' 2004 PARKER 2120 SPORT CABIN,** 150hp  
Yamaha 4-stroke, dual station, all electronics, plenty  
of rod holders, ready to fish, 520 hours, **\$31,500, 301-643-6694**  
**147571**

## See Color Photo on the Internet



**18' 2018 KENCRAFT 1860 BAY RIDER SKIFF,**  
Yamaha F-70 Four Stroke Outboard. Includes larger  
console upgrade with front seat, **732-929-1711 Tom@hobbylobbymarine.com 146763**

## See Color Photo on the Internet



**22' 1990 GRADY-WHITE Seafarer,** 350 Chevy, Unique I/O  
model. Fresh Water cooled Mercruiser Magnum. Approx 600  
Hours on crate repower. Full electronics. Outriggers., **\$16,500,**  
**410-598-1219 Dmkarle1409@verizon.net 147201**

## See Color Photo on the Internet



**21' 1996 TROPHY,** Merc 150hp Optimax, 2013, '96  
trailer, engine runs good, professionally maintained, boat  
is seaworthy, **\$3,700, 215-487-1453 rherbert7551@gmail.com 146986**

## See Color Photo on the Internet



**17' 2011 BAYLINER BOWRIDER,** Mercruiser Alpha  
3.0L Inboard, excellent condition, low hours, many ac-  
cessories, w/trailer, **\$9,000, 215-300-6374 146892**



See Color Photo on the Internet



**15' 2016 CHESAPEAKE LIGHTCRAFT Peeler Skiff,**  
15hp Yamaha ES. Under 20 hrs. Load-rite trailer, **\$7,800 • 410-320-2386**  
**denmedlock@gmail.com 147733**

**2019 60' COVERED SLIP,**  
60 foot covered slip,  
17'4" wide, deep water,  
located in Kent Narrows  
**\$25,000**

**570-279-1462**  
**jgstewart213@gmail.com**

See Color Photo on the Internet



**38' 1989 ISLAND PACKET,** Yanmar 44hp diesel, 338 hours, one owner boat, lightly used, **\$112,500, 732-899-8010 sales@schraderyachts.com 144832**

See Color Photo on the Internet



**Twin 2018 Honda 250hp,**  
30" shaft, only 10 hours,  
full warranty,  
**\$34,500 installed**  
**570-517-4563**

147345

See Color Photo on the Internet



**TRI-AXLE BOAT TRANSPORT TRAILER,** Easy to load and off load, up to 33' boats, 15,000 lb gross, **\$3,500, Call Mike 609-618-1467 147578**

See Color Photo on the Internet



**26' 2000 Load Rite TRAILER,** 26' boat, GVWR 7,400lb, 64 roller & electric winch, **\$1,200 OBO, 609-264-8689 147077**

See Color Photo on the Internet



**30' 1979 C&C YACHTS 30,** Yanmar 2QM15, Orig sailing specs, Asymmetrical, other sails, new dodger 2017. Owners moving up, priced to sell. Email only., **\$7,500, 732-530-4022 njcc301979@gmail.com 147053**

**Deadlines for Next Issue:**

**CB - 06.12.19**

**NJ - 06.19.19**

**\* By midnight**

**C&C MARINA**



**732-237-2222**  
**211 Sloop Creek Rd. Bayville, NJ 08721**  
**cncmarina.com**

**A Few Select Slips Available**

Easy access to the bay, fuel dock, bait & ice, marine store, service & security cameras.

**Reserve Yours Today!**

**QUALITY PRE-OWNED BOATS & MOTORS**

2016 Berkshire 20 RFC, Mercury F-90 .....**\$19,999**  
1994 Steiger Craft Chesapeake 25, Merc 5.7L .....**\$16,999**  
1996 Proline 202 Stalker, trailer.....**\$3,995**  
1999 Bayliner 23 Trophy .....**\$8,999**  
1985 Wellcraft 28, T/5.0 TKS Mercruisers.....**\$5,500**

**Pre-Owned Trailer**

1992 Load Rite, 30T 8000 Tandem Axle .....**\$6,500**  
2013 Hoosier BX 224NG-12, hydraulic pontoon trailer .....**\$3,999**  
2007 38' Ameratrail, tri-axle trailer .....**\$8,995**

**Call Or Visit Our Website For Complete Pre-Owned Inventory**

**YAMAHA**

**MERCURY**  
**MerCruiser**

**LOAD-RITE**

**Interlux**  
yachtpaint.com

**FUEL DOCK IS OPEN 7 DAYS A WEEK!**

**93 Octane • Buoy 39**

**211 Sloop Creek Rd., Bayville, NJ**

**BERKSHIRE**

**The Finest Pontoon Boats With The Best Deals!**



**2018 23 RFX STS,**  
**Yamaha F150hp**  
**4-stroke**

**\$49,999**



**2018 23 RFX,**  
**Mercury 150hp**  
**4-stroke**

**\$54,999**

**Call or Visit Our Website For Complete Pre-Owned Inventory**

## DOMINION YACHT SALES

Seeking Self-Motivated Yacht Brokers

If you enjoy spending time  
on the water, meeting successful new people,  
making \$\$\$\$ while having fun...

1-888-314-5509 or  
robert@dominionyachts.com

### CUSTOM REBUILT CARBURETORS

Full Line Carburetor Shop  
Also specializing in  
MARINE CARBURETORS

ALL CARBS ARE:  
Completely Disassembled • Washed  
and Boiled Out • Recolored • Wet Flow  
Tested • 100% Guaranteed

2 Barrels from \$155 • 4 Barrels from \$175

• Fast Turnaround Time • Dealers Welcome  
30+ Years Experience

200A Wood Ave., Middlesex, NJ 08846

**732-356-4333**

We Accept Visa and Mastercard

[www.customrebuiltcarbs.com](http://www.customrebuiltcarbs.com)

### Get it Up®

and down automatically with a  
**Good® Automatic Windlass**

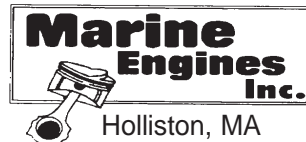
Automatic Free-Drop  
Rope/Chain Anchoring Systems

**800-780-4655**

Sales, Installation, & Service  
Barnegat, NJ

[www.goodwindlass.com](http://www.goodwindlass.com)

**SAY YOU SAW  
IT IN THE  
SALTY DOG**



### REPLACEMENT ENGINES FOR

MERC - CRUSADER - VOLVO - PCM  
OMC - GM - FORD - CHRYSLER

**- LOW PRICES -  
- HUGE INVENTORY -  
- SAME DAY SHIPPING -**

**Crusader® Power Pack**  
Left Hand & Right Hand  
ENGINES & PARTS IN STOCK • CALL

### NEW GM Marine Base Engines

3.0L (181 cu. in.).....	\$2937	7.4L (454 cu. in.).....	\$5575
4.3L (262 cu. in.).....	\$3695	7.4L HO (454 cu. in.).....	\$6399
5.7L (350 cu. in.).....	\$2929	8.2L (502 cu. in.).....	\$6559
5.7L (350 cu. in.) VORTEC.....	\$2929	- Call for More Information -	

**Velvet Drive®**  
TRANSMISSIONS  
**ZF/HURTH TRANSMISSIONS**  
New - Rebuilt - Take Outs - CALL  
**No Sales Tax Outside of MA**

**1-800-786-7639 • 1-800-RUNSNEW**  
[www.1800runsnew.com](http://www.1800runsnew.com)

## CAPTAINS LICENSE CLASS



USCG Approved Course & Test  
No Exam at the Coast Guard

CLASSROOM AND ONLINE COURSES  
CALL FOR MORE DETAILS

**732-830-9285**

[www.captainslicenseclass.com](http://www.captainslicenseclass.com)

**VIEW  
THOUSANDS OF  
BOATS  
ONLINE AT  
THESALTYDOG.COM**

**2000 sq ft  
Marina  
Workshop for  
Lease**

**Ideal for Marine  
Mechanic/Boat Sales**

Located in an 80-slip marina on  
Back River • \$3000 per month  
Includes land space for rack  
storage and winter storage  
Travel well for docking and  
pulling boats out of the  
water • 2 additional in water  
boat slips

West Shore Yacht Center  
1100 East Riverside Avenue  
Essex, MD 21221

**410-686-6998**





## Choose Clarks Landing

✓ Low  
Commissions

✓ Free Market  
Analysis

✓ Free Land  
Storage  
Programs

✓ Huge  
Marketing  
Budget

✓ We take  
Trades!

## Want to Sell your Boat?

### Mid Atlantic's Largest Yacht Broker

A successful brokerage program starts with exposure. Due to our size, Clarks Landing can offer more exposure than other brokers.

Our experienced and dedicated team handles the entire transaction, including financing, demonstration rides, haul outs, estimates and more.



"I was extremely impressed with the professionalism of the Clarks Landing NJ sales team. I was able to find the boat I was looking for and at a great deal!. Even after the closing of my new boat, I was happy to have the staff at Clarks Landing list my other boat. They sold my boat in one week! I will only use Clarks Landing for any future boat sales or purchases.

~David Purdy

**We will get your boat sold fast..and at Top dollar.  
For a Hassle-free Experience contact us today!**

**ANNAPOLIS AREA**  
1442 Ford Road  
Shady Side, MD 20764  
(410) 867-9550

**BAY BRIDGE**  
357 Pier One Rd Ste 101  
Stevensville, MD 21666  
Phone: (410) 867-9550

**JERSEY SHORE**  
847 Arnold Avenue  
Point Pleasant, NJ 08742  
(732) 899-5559

**DELAWARE RIVER**  
63 St. Mihiel Drive  
Delran, NJ 08075  
(856) 461-2700

[clarkslanding.com](http://clarkslanding.com)

[boatinfo@clarkslanding.com](mailto:boatinfo@clarkslanding.com)

**732-899-5559**



**Scout BOATS**

**FOUR WINNS**

**KEY WEST**

**G3 Boats**

**BEST Boats - BEST Prices - BEST Service**

### PREOWNED (mostly fresh water use) SPECIALS

17' 2010 Sea Ray 175 Sport Boat .....	\$13,500	23' 1999 Sea Ray 230 Overnighter .....	\$15,900
17' 2012 Key West Boats 176CC .....	\$17,900	24' 2016 G3 X 324 SS Pontoon .....	Pending
17' 2016 Bayliner 170 Bowrider.....	Pending	25' 2004 Rinker Fiesta Vee 250 .....	\$22,000
17' 2013 Bayliner 175 Bowrider.....	Pending	26' 2012 Crownline Eclipse E6 .....	\$51,000
18' 1999 Sea Ray 185 .....	\$9,900	26' 2013 Monterey Sport Boat 264FS.....	\$54,500
19' 2013 Bayliner 195 Bowrider.....	\$20,900	27' 2005 Crownline Cuddy 275 CCR.....	\$38,500
20' 1998 Palm Beach 201 CC .....	\$9,900	32' 2012 Monterey Super Sport 328SS .....	\$125,000
23' 2007 Sea Fox Walk Around 236WA.....	\$21,500	39' 2004 Wellcraft Coastal 390 .....	\$199,000
23' 2014 Bryant Bowrider Calandra .....	\$44,900		



410.287.8280  
www.AnchorBoat.com

448 N MAULDIN AVE | NORTH EAST, MD 21901

Parts & Service | General Boat Repairs  
High & Dry Boat Storage

**YAMAHA** AUTHORIZED DEALER