

Free!



The



CHESAPEAKE BAY EDITION

Published Every Other Week • Distributed in Maryland, Delaware, Southern Pennsylvania and Virginia

POWERBOATS & SAILBOATS ...Including Marine Services



NEW 2020 SEA FOX 328 COMMANDER
1 available, no trailers,
LIQUIDATION PRICE \$199,500
302-945-2254 • anita@rudymarine.com



25' 2018 GRADY WHITE 257 FISHERMAN, NEW YEAR SPECIAL!!!! T/F150 Yamahas, low hrs, 7/23 warranty, factory options, Garmin GPS radar, Icom 504 radio, outriggers, fish inshore/offshore, family cruising, like new,! **MAKE OFFER! \$119,000, 302-226-3734, Cell 302-218-9325** 144975



NEW 2021 29' JEANNEAU NC 895 SPORT, Twin Yamaha, loaded
In Stock! • Call for Price
302-945-2254 • anita@rudymarine.com



2017 29' COBIA 296 CC
T/300hp Yamaha 4-strokes, 200 hrs, trl
\$159,000 • 302-945-2254
captain_glen@rt113boatsales.net

HAPPY NEW YEAR

From
The Salty Dog Staff

**AS LOW
AS \$49**

Go to www.thesaltydog.com
to get started!!



Annapolis, MD • St. Michaels, MD
Deltaville, VA • Woodbridge, VA

CONTACT US TODAY!

info@curtisstokes.net
410.919.4900

**CURTIS
STOKES**
& ASSOCIATES

www.curtisstokes.net


www.thesaltydog.com • 1-888-843-1585

Rt. 113 Boat Sales and Service
 Selbyville, DE 302-436-1737
www.Rt113BoatSales.net

TAX FREE


YAMAHA
 Re-power with Yamaha's
 Unmatched Reliability
TAX FREE!

f YouTube



COBIA from 20 - 35 ft.
Just Better Built in Every Way!

Your Exclusive Dealer
 All of MD, DE and parts of VA



PATHFINDER from 20 - 27 ft. **ANGLER DRIVEN**

Brokered Boats WANTED!
 Clean, Late Models up to 35 ft. LOW FEES - GREAT RESULTS!

GARMIN
 AUTHORIZED RESELLER
 Certified Installer

BOAT TRAILERS
 Wholesale Pricing!

Tidewater TRAILERS

RT113BoatSales.net
 HAUL OUT AND TRANSPORT SERVICES AVAILABLE

Tired of making that Monthly Boat Payment?

We Buy Boats for Cash.

Clean late Models, years 2005 and up
 powered with Yamaha Outboard Motors

Tidewater 198 CC - 2017 - \$32,500



Cobia 296 CC - 2017 - \$159,000



Super Clean and Loaded

Now is the Best Time to Cash Out.

**We handle, funding, Payoff, National MLS
 and Transport-Delivery
 to anywhere in the USA**

Get Your Boat Sold Fast and for Top Dollar.

Clean late Models, years 2005 and up
 powered with Yamaha Outboard Motors

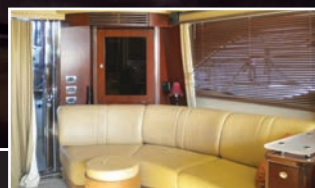
Call 302-436-1737

Upper Chesapeake Yacht Sales

John Curry • (610) 299-3598
www.upperchesapeakeyachtsales.com



**52' 2006
Sea Ray
Sedan Bridge
\$399,900**



One of Sea Ray's most popular models with large air conditioned bridge and three statement layout • low hours on Cummins power • aggressively priced for end of year sale before price is raised January 2021 • must see for the Sea Ray Buyer • easy to see in covered shed regardless of weather conditions!

Reduced!



37' '88 Hunter Legend Sloop, great electronics, nice • \$35,900



37' '85 Beneteau Idylle 11.5, Perkins Dsl, dink • \$21,900 OFFERS



35' '76 Ericson Sloop, Volvo Diesel, upgrades, in process, \$14,900



34' '80 Sabre Sloop, Yanmar Dsl, nice • \$24,900 OFFERS



31' '13 Bertram Custom SF, like new, \$200K below replacement • \$395,000



Reduced!

28' '78 Cape Dory Sloop, diesel, great starter boat • \$12,900



**Expect The Same
Superior Service From Our
Brokerage That You Get
From Our Marina**

BOAT SALES & BROKERAGE
• Financing & Insurance Available •

WORTON CREEK MARINA

23145 Buck Neck Road • Chestertown, MD 21620

(410) 778-3282

NEW YEAR LIQUIDATION SALE!

SEA FOX
No Trades
LIQUIDATION PRICE!
\$199,500
1 Available!



NEW 2020 Sea Fox
328 Commander

WAR EAGLE BOATS



2021 War Eagle 860 Sportsman
F115 Yamaha, alum trailer
JUST ARRIVED!

MONTEREY BOATS



BOAT, MOTOR & TRAILER BLOWOUT!
\$49,995

NEW 2019 M225 • Yamaha F150

VIAGGIO
BY MISTY HARBOR

ALL NEW MODEL!



2021 Diamante & Lago
READY TO GO!

NEW DEALER FOR:

Bentley



2021 Huge Inventory!

JEANNEAU



NEW 2021 Jeanneau NC895 Sport
T/F250 Yamahas

MISTY HARBOR



Leftover Closeout Pricing!

2020 Misty Harbor B-2285
CEC Bar Triple-tube
F-250 Yamaha



Leftover Closeout Pricing!

2020 Misty Harbor A-2285 CF
F-115 Yamaha



Leftover Closeout Pricing!

2020 Misty Harbor A-2085 CF
F-90 Yamaha



Leftover Closeout Pricing!

2020 Misty Harbor A-2085 CF
F-115 Yamaha

Rudy Marine.com

Where Family Boating Begins

Delaware has **NO SALES TAX!**
3 GREAT LOCATIONS!

302-945-2254 • 32606 DuPont Blvd Dagsboro, DE 19969
302-999-8735 • 411 S. Maryland Ave. (Rt 4) Wilmington, DE 19804
443-995-3785 • 3033 Kent Narrows Way South, Suite 3 Grasonville, MD 21638

REPOWER HEADQUARTERS

YAMAHA OUTBOARDS
THE POWER OF RELIABILITY
SALES EVENT

OFFER VALID FROM JANUARY 5, 2021 - MARCH 2, 2021
Must take delivery by May 31, 2021

For a limited time, purchase a new, select eligible Yamaha Outboard and choose either:

UP TO **\$1500** or **5 Years** OF WARRANTY PROTECTION

IN DEALER CREDIT

2021-2022 - Yamaha's 5 Year/100 Hour PowerTwin Limited Warranty, along with the additional protection of a 5 Year/1000 Hours Limited PowerTwin Outboard PowerTwin Limited Warranty, is available on select Yamaha Outboards. See your dealer for details.

2021-2022 - Yamaha's 7 Year/1000 Hours PowerTwin Limited Warranty, along with the additional protection of a 5 Year/1000 Hours Limited PowerTwin Outboard PowerTwin Limited Warranty, is available on select Yamaha Outboards. See your dealer for details.

CLARKS LANDING

YACHT SALES



**2016 Sea Ray
510 Flybridge
\$999,995**

**2015 Pursuit 385
Offshore
\$334,900**

**2018 Cruisers
Yachts Cantius
\$1,789,450**

**2008 Grady White
Canyon 336
\$127,900**

WANT TO SELL YOUR BOAT FAST

A successful brokerage program starts with exposure. Due to our size, Clarks Landing can offer more exposure than most other brokers.

Our experienced, dedicated team handles the entire transaction, including financing, marketing, demonstration rides, haul outs, estimates & more.

List your boat where it is or at one of our facilities.

- ✓ Free Land Storage Program
- ✓ In-Water Slips for Yachts
- ✓ Huge Marketing Budget
- ✓ Free Market Analysis
- ✓ We Take Trades
(Most Other Brokers Don't)
- ✓ Family-Owned over 40 Years

**WE SPEED UP THE SALE BY
TAKING A TRADE ON YOUR
BOAT. CONTACT CLARKS FOR
A HASSLE-FREE EXPERIENCE.**

I was extremely impressed with the professionalism of the Clarks Landing NJ sales team. I was able to find the boat I was looking for and at a great deal! Even after the closing of my new boat, I was happy to have the staff at Clarks Landing list my other boat. They sold my boat in one week! I will only use Clarks Landing for any future boat sales or purchases.

- David, Clarks Landing Yacht Sales Customer

**DISCOVER THE CLARKS
LANDING DIFFERENCE**

ANNAPOLIS AREA

1442 Ford Road, Shady Side, MD 20764

(410) 867-9550

boatinfomd@clarkslanding.com

JERSEY SHORE

847 Arnold Avenue, Point Pleasant, NJ 08742

(732) 899-5559

boatinfonj@clarkslanding.com

WWW.CLARKSLANDING.COM

Authorized dealer for





825 Bowleys Quarters Rd. | Middle River, MD 21220
410-335-6200
beaconlightmarina.com | sales@beaconlightmarina.com

WITH SO MANY WAYS TO HAVE FUN ON A YAMAHA,
It's easy to find yours at Beacon Light Marina



ALMARS

We Are A Full Service, Premier Mercury Outboard Repair Center! Let Our Certified Mercury Technicians Service Your Mercury Motor Needs!

LEFTOVER VERADO SALE!

**HELP WANTED!
IN SEARCH OF
CERTIFIED MERCURY
OB TECH!
CALL FOR DETAILS**



225hp
black • \$14,995



250hp
black • \$15,995



300hp
black • SOLD



300hp
white • \$18,995



350hp
Call for Great Deal!



350hp
Call for Great Deal!

We Now Offer
INJECTOR SERVICE
with
ONE Day
Turnaround!



150
4-stroke
Black



150 ProXS
4-stroke
Black



175XL ProXS
4-stroke
Black



200
Sea Pro
Black



225XL
4-stroke
Black



250 XL
4-stroke
White

**100's of Used
Cowlings In Stock!
Call for Availability!**

**5HP
BLOWOUT SALE!
Call for Pricing!**

**250XL PRO
VERADO 15,995
Only 1 Available**

REMANUFACTURED OUTBOARD ENGINE SALE!

90hp - 250hp 2 Year Warranty
Starting As Low As \$5,495 Call for Details!

**CALL US
FOR GREAT
DEALS ON
NON-CURRENT
POWERHEADS!**

**Call us for current pricing new current
and noncurrent outboards
NO SALES TAX IN DELAWARE!**

701 Washington St., New Castle, DE

302-328-8541
www.almarsoutboards.net

All prices good
while supplies last!

HOURS: Monday - Friday: 8am - 5pm
CALL FOR GREAT PRICING ON NEW
& USED MERCURY OUTBOARDS

NO HIDDEN COSTS
NOT RESPONSIBLE FOR TYPOGRAPHICAL ERRORS



Pricing includes all rebates.

CURTIS STOKES & ASSOCIATES

Worldwide Yacht Sales | Yacht Charters | New Yacht Construction



2001 47' Catalina - \$188,000
Jason Hinsch - 410.507.1259



1980 43' Viking - \$69,500
Ed Pickering - 410.708.0633



2011 28' Mako - \$89,000
Anthony Sayo - 757.427.4042



2007 22' Chris-Craft - \$35,000
David Robinson - 410.310.8855

To see more details about these and all other yachts around the globe, please visit our website below.

Annapolis, MD • St. Michaels, MD • Delaware City, DE • Deltaville, VA • Woodbridge, VA
Telephone: 410.919.4900 • Email: info@curtisstokes.net

www.curtisstokes.net



**MINMAR
MARINE**

14 Old Sea Isle Blvd.
Sea Isle City, NJ 08243 (SI)
609-263-2201
www.minmar.com



YAMAHA

Interlux
yachtpaint.com

**RESERVE
2021 SLIP NOW!**
New & Brokerage Boat
Customer Specials!

Selling Your Boat?
Three Locations
Serving All Your
Brokerage Needs!

OPEN ALL YEAR!



MARINE CENTERS

Lavallette, NJ (LV)
732-793-7460
Lanoka Harbor, NJ (LH)
609-242-2200
www.oceanbeachmarina.com



33' '01 Wellcraft 300 Martinique,
T/8.1L I/O, AC, gen, **\$54,900 • SI**



30' '02 Cruisers 3075, T/5.0L, 429 hours,
many updates, electronics, **\$42,900 • LH**



30' '01 Chaparral 300 Signature,
T/5.0L, loaded, gen, **\$44,900 • LH**



30' '00 Bayliner 3055 Ciera,
T/5.7L Bll, gen, 519 hrs, **\$37,900 • LH**



30' '96 Wellcraft 302 Scarab Sport,
T/225hp OBs, lift kept, **\$35,900 • LV**



**32' 1987
Wellcraft
3200 St Tropez
T/454 FWC,
many upgrades,
\$24,900 • LH**



28' '05 Triton 2895 CC, T/225hp
4-stroke, ready to fish, **\$58,000 • LV**



25' '01 Baja Outlaw, 496,
excellent condition, **\$39,900 • SI**



24' '02 Worldcat 246 DC,
T/125hp OBs, trailer, **\$24,999 • SI**



24' '99 Silverhawk 24CC, 2005 350
Mag, Bll, ready to fish, **\$26,900 • LH**



23' '06 Glastron GX235, 5.0L 270hp,
440 hours, well maint'd, **\$20,995 • LV**



23' '93 Grady White 232 Gulfstream,
T/2006 Yamaha 150hp, **\$31,500 • LV**



22' '08 Grady White 226 Seafarer,
Yamaha 250hp 4-stroke, **\$44,900 • SI**



18' '02 Bayliner 185 Capri, 3.0L
135hp I/O, trailer, **\$12,350 • LV**



17' '75 Boston Whaler Montauk 17 CC,
60hp OB, trailer, FF, VHF, **\$12,800 • LV**

45' '89 Bayliner 4550 MY	LH	\$79,900	24' '99 Silverhawk 24CC	LH	\$26,900
36' '77 Egg Harbor Sportfisherman	LH	\$39,900	23' '93 Grady White 232 Gulfstream	LV	\$31,500
33' '01 Wellcraft 3300 Martinique	SI	\$52,000	23' '10 Horizon SC23	LV	\$14,500
32' '87 Wellcraft St Tropez 3200	LH	\$24,900	23' '15 Sea Hunt 234 Ultra	LH	\$59,900
30' '02 Cruisers 3075	LH	\$42,900	21' '93 Wellcraft V-21 Step Lift	LV	\$6,500
30' '00 Bayliner 3055 Ciera	LH	\$37,900	20' '05 Baja Outlaw	LV	\$15,250
30' '96 Wellcraft 302 Scarab	LV	\$35,900	18' '01 Seagull Nautico 18	LV	\$8,900
28' '05 Triton 2895 CC	LV	\$58,000	18' '87 Sea Ox 180 DC	LH	\$12,200
28' '86 Proline 28WA	LH	\$16,600	18' '02 Bayliner 185 Capri	LV	\$12,350
24' '99 Robalo 2420	LH	\$22,900	17' '75 Boston Whaler Montauk 170CC	LV	\$12,800
24' '03 Stingray 240 LR	LH	\$15,900			

ANNAPOLIS CRUISAIR, INC.

Family Owned & Operated for Over 50 Years

SALES • SERVICE • INSTALLATION



U-LINE
U-Line Icemakers
110/115vAC

We will meet or beat
any competitive
price quote for
these products!

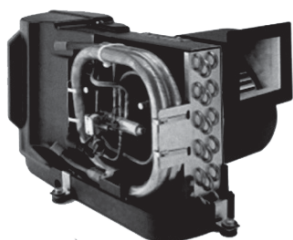


Marine Diesel
Heaters

Espar

Cruisair®

New Turbo
Air Conditioners • Heat Pumps



• We Have • BREATHE EASY AIR FILTERS



➔ **DOMETIC**

SPOTZERO®
Fresh Water Reverse Osmosis

Water Purification Systems



Vitrifrigo
REFRIGERATORS



WAECO
Adler/Barbour®

Sentry™
Cruisair

**BATTERY
CHARGERS**

**SAFEST
CHARGER
ON THE
MARKET!**



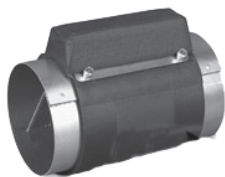
**Eskimo Ice
600 Ice Pump**

Provides up to 600 lbs. of fresh
ice in a day from your ships
water tank.



STINKY BOAT?

We Have **NEW**
Breathe Easy
Air Purifiers



MARINE AIR SYSTEMS®
AIRRRRRRRRR
by Dometic GROUP



KOHLER®

- Generators -



Fischer Panda

Onan

2124 Renard Ct. • Annapolis, MD

(410) 224-0970 • (410) 974-6136 • Fax (410) 224-0050

www.annapoliscruisair.com

**CAROLINA
SKIFF****23 Ultra****SEA
CHASER**
By: Carolina Skiff, Inc.**24 HFC**

Powered by:



DANNY'S MARINE
(410) 228-0234 • www.dannysmarine.com
 Located on US Rt 50 (mile marker 86) • Chateau Drive near Linkwood, MD
dannysmarine@comcast.net

Limited Time Offers. Not all models qualify. See Participating Suzuki Marine dealer for details or visit www.suzukimarine.com

©2020 Suzuki Motor of America, Inc.

**Fishin' Boats From
Fishin' Folks**

WINTER SAVINGS

**\$159,900**

2004 Grady-White 300 Marlin
Twin 2019 Yamaha XTO 425HP

**\$89,900**

2017 KEY WEST 244CC
Yamaha 300HP, Load-rite Bunk Trailer

**\$17,900**

2008 AQUA PATIO 2500 RE
Honda 150HP, Load-rite Bunk Trailer

**\$21,500**

1985 Grady-White 226 Seafarer WA
2009 Yamaha 250HP, 2014 Load-rite Trailer

**\$24,500**

2016 G3 20SC SHDW
Yamaha 90HP, Bear Galvanized Trailer

Fishing
makes me
HAPPY

May-Craft
The Perfect Craft for Your Sport

G3

KW
KEY WEST

**GOOTEE'S
MARINE**

South of Cambridge On Maryland's Eastern Shore
1439 Hooper's Island Road, Church Creek, Maryland

800-792-0082
Gootees.com

CLARKS FLOATS

PIER & PILE

443-871-0436 • CLARKSFLOATS@GMAIL.COM

CLARKS FLOATS PIER & PILE

- Floating Docks
- Pile Driving
- Re-Decking

MMCLB #390 I



8x16 KAYAK DOCK



8x12 KAYAK ACCESS

**Any Custom
Size Float
Available!**



Kayak Floats
Dock Sections • Work Rafts
Swim Platforms • Gang Planks
SS Fasteners • #1 P.T. Lumber
Perma Float Floats
Composite Decking

Deale, MD



GOLDSBOROUGH'S MARINE



"Where Happiness Is Just A Boat Ride Away"

**Gift Certificates
Available Starting
at \$5.00**

**Happy
New
Year!**

Holiday Price \$14,595



2021 Lowe FM160 Tiller Package
Mercury 30ELHPT 4-stroke, Roughneck floor
upgrade, Lowe 1800-60 galvanized trailer
LIST PRICE \$14,995



Buy A
Mercury 2.5 MH
4-stroke
at \$699 and
Goldsborough's
will Donate
\$25.00 to
**Salvation Army
Red Kettle Program!**

Holiday Price \$21,195



2020 Lookout 18'
Yamaha 70ELPT 4-stroke,
EZ Loader aluminum trailer
LIST PRICE \$21,525

Goldsborough's Marine

709 W. Main St., Crisfield, Maryland
www.crisfield.com/gold

Ph.# 410-968-0852 • Email: merc71@verizon.net



**14-800 (800lbs)
Galvanized • \$900**



**16F1200WTS (1200lbs)
Galvanized • \$1,295**



OWN THE BOAT OF YOUR DREAMS



Become the next **"Just Financed"**.

Apply online at **JJBEST.COM** or call **800-USA-1965**.

Offering low rates, long terms, and no prepayment penalties.
Simple application and quick funding.

Looking to refinance? We can help with that too.

ADVERTISERS INDEX

ALMARS.....	7	GOLDSBOROUGH'S MARINE	12
ANCHOR BOATS.....	24	GOOTEE'S MARINE.....	11
ANNAPOLIS CRUISAIR.....	10	HANCE & SMYTHE.....	22
ATC AUTO/MARINE TRAINING.....	15	JJ BEST BANC & CO.....	13
BEACON LIGHT MARINA.....	6	OCEAN BEACH	9
BOAT LIFTS UNLIMITED.....	14	RT 113 BOAT SALES	2
CLARKS FLOATS	12	RUDY MARINE	4
CLARKS LANDING	5	SPARROW POINT YACHT CLUB.....	17
CURTIS STOKES.....	8, 19	UPPER CHESAPEAKE YACHT SALES ..	3
DANNY'S MARINE.....	11	UTSCH'S MARINA.....	22
GEICO.....	16	WATERFRONT.....	23

THE LARGEST LOW PROFILE BOAT LIFT MANUFACTURER IN THE USA

**CALL
US FOR
YOUR LOCAL
DEALER!**



Choose The Right Boat Lift, Choose

- Low Profile Design • Low Maintenance • 2/5 Yr Warr.
- Outside Walkway • Galvanized Steel Construction
- Aluminum Cradles Available • Capacity 800-40,000 lbs.

MAGNUM
BOAT LIFTS
Personal Watercraft Lifts

Fully
Insured

BOAT LIFTS UNLIMITED
410-674-3100 • 1-800-268-5911

**WE SERVICE
MOST MAKES
OF BOAT
LIFTS!**

Located in Odenton, MD, this full-service boat lift manufacturer has a network of over 180 distributors serving the Chesapeake Bay, Great Lakes and Atlantic Coast with Magnum Boat Lifting Products. Boat Lifts Unlimited is dedicated to customer satisfaction through prompt, courteous service on most existing boat lifts and timely installation of new boat lifts. Quality materials, attention to detail and innovative design have made Boat Lifts Unlimited one of the largest boat lift manufacturers in the U.S.

MARINE TECHNICIAN TRAINING

RIDE THE CREST
to career success

**ENROLL FOR TRAINING TO BECOME A PROFESSIONAL
MARINE SERVICE TECHNICIAN**

Our in-depth program includes training in: Seamanship, AC & DC Electrical, ABYC Standards, Air Conditioning & Refrigeration, Mechanical Systems, Stern Drives/Transmissions, Computerized-Fuel Injected Inboard and Outboard Engines, Inboard, Outboard and I/O Systems, Electronic Diesel Engines (Cummins QSB 5.9 380 HP Common Rail Trainer), Fiberglass & Gelcoat Repair, Plumbing and Sanitation Systems.

Financial Aid for those who Qualify • Career Placement Assistance

 **CALL NOW 866-905-4278**
www.autotraining.edu
900 Johnsville Blvd., Warminster, PA 18974

Supported by
 & 
with Training Materials & Equipment

For required program disclosure information, please go to www.autotraining.edu/consumerinformation.


Boat Dealers & Brokers...

YOUR AD
could be HERE

....Reaching out to well over 30,000 interested boaters & boating prospects!

We're the original FREE Boating Publication....
and readers find a new copy on the stands...every other week.

For more information, call the leader in targeted boat advertising
Toll Free 1-888 -843-1585



**YOUR
ENJOYMENT
MADE EASY**

GEICO[®]
FOR YOUR BOAT

Get a GEICO quote for your boat and, in just 15 minutes, you'll know how much you could be saving. If you like what you hear, you can buy your policy right on the spot. Then let us do the rest while you enjoy your free time with peace of mind.

geico.com/boat | 1-800-865-4846

Some discounts, coverages, payment plans, and features are not available in all states, in all GEICO companies, or in all situations. Boat and PWC coverages are underwritten by GEICO Marine Insurance Company. In the state of CA, program provided through Boat Association Insurance Services, license #DH87086. GEICO is a registered service mark of Government Employees Insurance Company, Washington, DC 20076; a Berkshire Hathaway Inc. subsidiary. © 2020 GEICO 20_206641

Make Sparrows Point your new Country Club Home! What a deal!

***Only \$6 a foot per month, and you do not have to be
a member of the Country Club! Slip fees include Ice,
Water, Electricity, and WiFi!***

***Become a Social member, and we will lower the slip
fees to \$3 a foot per month!***

***Social Dues start at \$125 a month and the \$2,500
initiation fee is waived.***

Inquires

Joe Roux, CCM, PGA General Manager

Phone: (410) 477-1500 ext. 114

Email: j.roux@sparrowspointcc.org



PRIVATE AD RATES

- TOTAL

FRONT COVERS ARE BASED ON AVAILABILITY

- CC#

Expiration Date Security Code

Advertiser's Name

Address

Phone

Where did you pickup “The Salty Dog”?

Store	Town
-------	------

AD COPY

FT. YR.

MANUF. / MODEL

MOTOR

ACCESSORIES

LOCATION OF BOAT _____, _____
City State Zip Code

PRICE _____ **City** _____ **State** _____ **Zip Code** _____

PHONE # _____

EMAIL

**Send to: The Salty Dog
254 Brick Blvd • Suite 1
Brick, NJ 08723**

888-843-1585

Fax (732) 477-9000 • Email: info@thesaltydog.com

No refunds after Ad is processed. • Advertiser will be responsible for \$20 fee on returned checks.

YOUR BOAT LISTING CAN ALSO BE SUBMITTED ON THE INTERNET www.thesaltydog.com

SPECIAL FEATURES

PRIVATE BOAT ADS Pgs. 20-21

SUBSCRIPTION CHESAPEAKE BAY

SALTY DOG is published Bi-weekly 25 times a year.

Papers are mailed **FIRST CLASS**. Your first issue will be mailed within 1 week.
To subscribe, just fill in the amount of issues and multiply by \$2.00*

No. of issues x \$2.00* = Total Cost

- ☐ CHECK ☐ MONEY ORDER ☐ MASTERCARD ☐ VISA

Credit Card No.

Exp. Date _____

Signature _____

Name _____

Address

City _____ State _____ Zip _____

Telephone _____

**Canada Subscription Add 10% - Bermuda Subscription Add 30%
Outside the Continental USA Add 50% • Credit Cards Only Outside USA*



Mail To: THE SALTY DOG, 254 Brick Blvd • Suite 1, Brick, NJ 08723



**A Bi-weekly Publication for
Powerboats, Sailboats, Marine
Equipment, Supplies, Services,
Waterfront and Photo Ads**

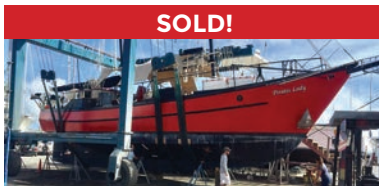
For More Info on Display Ads or Internet Listings

Call 888-843-1585 • Fax (732) 477-9000

info@thesaltydog.com • Mon.- Fri. 9:00 am to 4:00 pm



Worldwide Yacht Sales | Yacht Charters | New Yacht Construction



SOLD!

72' Trade Rover



SOLD!

50' Chris-Craft



SOLD!

48' Evans Boats



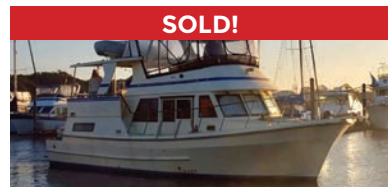
SOLD!

44' DeFever



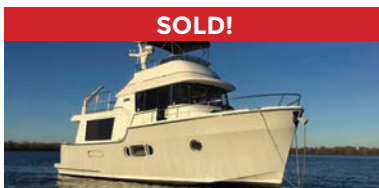
SOLD!

44' Gulfstar



SOLD!

42' Fu Hwa



SOLD!

40' Fathom



SOLD!

40' Hinckley



SOLD!

36' C&C



SOLD!

36' Bristol



SOLD!

32' Eagle



SOLD!

26' Sisu

List your boat with us and join our **SOLD list!**

To see more details about these and all other yachts around the globe, please visit our website below.

Annapolis, MD • St. Michaels, MD • Delaware City, DE • Deltaville, VA • Woodbridge, VA
Telephone: 410.919.4900 • Email: info@curtisstokes.net

www.curtisstokes.net

See Color Photo on the Internet

40' 2005 FORMULA 400 SUPER SPORT, T/Mer-cruiser 469 HO's, AC/HT, gen, electronics, 115 hours, **\$159,995, 732-840-1100 sales@brennanboat.com 151771**

See Color Photo on the Internet

31' 2014 PURSUIT 310 ST CENTER CONSOLE, Twin 300hp Yamahas, low hours, **\$179,000, 732-899-8010 sales@schraderyachts.com 152133**

See Color Photo on the Internet

28' 2008 SEA RAY 280 SUNDANCER, Twin Mer-cruiser 4.3L, two staterooms, **\$53,500, 732-899-8010 sales@schraderyachts.com 152138**

See Color Photo on the Internet

37' 1997 SEA RAY Sundancer, New 8.1 Horizon fresh water cooled motors 65 hrs, new canvas back and windshield enclosure, full camper top, Very clean, **\$55,000, 410-446-0667 Candlmauk@verizon.net 152005**

See Color Photo on the Internet

31' 2016 FORMULA 310 BR, T/8.2L Merc Mag Big Blocks, BIII, 205 hours, joystick, **\$170,000, 732-899-8010 sales@schraderyachts.com 151850**

See Color Photo on the Internet

27' 2014 SAILFISH SAILFISH 275 DC, T/Mercury 200hp Verados, 117 hours, no bottom paint, **\$105,995, 732-840-1100 sales@brennanboat.com 151854**

See Color Photo on the Internet

34' 2011 PURSUIT 345 OS, Twin 250hp Yamahas, radar, autopilot, gen, AC/HT, ready to fish, **\$219,995, 732-840-1100 sales@brennanboat.com 149753**

See Color Photo on the Internet

30' 2004 SEA RAY 300 SUNDANCER, T/5.7L MPI, fuel injected, AC/HT, gen, loaded, 400 hours, just serviced, **\$49,900, 609-693-9423 tidesendmarina1@gmail.com 148279**

See Color Photo on the Internet

27' 2018 SEA RAY 270 SDX, Mercruiser 6.2L V8, BIII, 85 hours, lift kept, **\$97,995, 732-840-1100 sales@brennanboat.com 151773**

See Color Photo on the Internet

33' 1996 BLACKFIN Combi, 3208 cats with approx 2800 hrs, Northern Lights gen, must see to appreciate, **\$79,000 610-291-0617 Robertdthompson10@gmail.com**

152146

See Color Photo on the Internet

29' 2018 MONTEREY 295 SPORT YACHT, 8.2L I/O, 160 hours, loaded, trailer, **\$140,000 OBO, 917-817-5084 esproviero@googlemail.com 151848**

See Color Photo on the Internet

26' 2001 Glacier Bay Catamarans 2670, Re-powered well maintained Glacier Bay 2670. 2019 Suzuki 150's, new controls, new hydraulics. See internet listing for more., **\$59,900, 336-269-1010 stoked@mac.com 152053**

See Color Photo on the Internet

28' 2017 CHRIS CRAFT LAUNCH 28, T/Merc 6.2L 350hp, loaded, lift kept, **\$180,000, 732-899-8010 sales@schraderyachts.com 151849**

See Color Photo on the Internet

26' 2003 HYDRA-SPORTS 2600 VECTOR, excellent condition, ready to sell, **\$34,950 OBO, 908-489-5098 151127**

See Color Photo on the Internet

33' 1999 FOUNTAIN 10M, T/502 fuel injected rebuilt in '19, TRS drives, Velvet drive trans, IMCO helm, external hyd steering, 80+ MPH, Myco trailer, **\$29,900, 609-693-9423 tidesendmarina1@gmail.com 151683**

See Color Photo on the Internet

28' 2016 CHRIS CRAFT LAUNCH 28 HERITAGE EDITION, Mercruiser V8 6.2L, FWC, BIII, **\$172,000, 732-899-8010 sales@schraderyachts.com 152139**

See Color Photo on the Internet

25' 2015 PARKER 2520 XLD, Twin Yamaha F200, open back pilothouse, custom rodholders, 4G radar, **\$119,900, 732-899-8010 sales@schraderyachts.com 152137**

See Color Photo on the Internet



25' 2016 SEA RAY 250 SLX, Merc 8.2L, BIII, loaded, low hours, excellent condition, **\$82,500**, 732-899-8010 sales@schraderyachts.com 151851

See Color Photo on the Internet



22' 1992 SHAMROCK CENTER CONSOLE, runs great, gas engine, **\$9,500**, 908-489-5098 151035

See Color Photo on the Internet



20' 1995 May-Craft, new Yamaha, **\$14,950**, 908-489-5098 seaportpics@gmail.com 151124

See Color Photo on the Internet



25' 2008 CHRIS CRAFT CORSAIR 25 HERITAGE EDITION, Mercruiser 496 375hp Mag Seacore, full boat cover, **\$60,000**, 732-899-8010 sales@schraderyachts.com 152136

See Color Photo on the Internet



21' 2005 PARKER 2120 SPORT CABIN, Yamaha F150, West Coast bow rail, **\$30,000**, 732-899-8010 sales@schraderyachts.com 152135

See Color Photo on the Internet



20' 2003 SUGAR SAND CALAIS, 210hp Sport Jet, runs great, 40 MPH, **\$7,295**, 908-309-4016 almarine1@gmail.com 152017

See Color Photo on the Internet



25' 2014 SEA RAY 250 SLX, Merc 350 MPI, BIII, bimini, covers, priced to sell, **\$54,995**, 732-840-1100 sales@brennanboat.com 151774

See Color Photo on the Internet



21' 2001 PARKER 21 SPECIAL EDITION, 150hp Yamaha, 804 hours, VHF, FF, Garmin GPS, **\$26,000**, 732-899-8010 sales@schraderyachts.com 152019

See Color Photo on the Internet



TOHATSU 150HP BFT 4-STROKE NEW, 5 YEAR WARRANTY!!! control and cables, tack & harness, key switch, water separator, aluminum prop **\$13,600 • 908-309-4016** almarine1@gmail.com 150629

See Color Photo on the Internet



24' 2007 SEA RAY 240 SUNDANCER, 5.0L 260hp Bravo III, Load Rite trailer, **\$27,500**, 732-899-8010 sales@schraderyachts.com 152134



See Color Photo on the Internet



23' 2010 SEA RAY 230 SELECT, Merc 5.0L, 130 hours, **\$30,900**, 732-899-8010 sales@schraderyachts.com 151775

See Color Photo on the Internet



23' 2002 TROPHY 2352 WA, 5.7L Merc I/O, marine head, baitwell, 2004 Tidewater tandem trailer, **\$14,900**, 908-309-4016 almarine1@gmail.com 150630

Deadlines for Next Issue:

CB - 01.27.2021

NJ - 02.03.2021

** By midnight*

UTSCH'S YACHT SALES

BETWEEN CANAL AND SCHELLENGER'S LANDING

Rt. 109 & Cape May Canal, Cape May, NJ (609) 884-BOAT (2628)

LICENSED

www.capemayharbor.com

INSURED



**18' 2002 Aquatron,
I/O, \$7,000**



**31' 1998 Tiara Express,
T/Crusaders, \$39,900**



**15' Custom Skiff,
boat only, \$Call**



**34' 1986 Silverton Convertible,
T/V8 gas, \$19,900**



**28' 1976 Luhrs Flybridge Sedan,
Crusader V8, \$3,500**



**21' 1987 Grady White Dual Console,
150hp Suzuki, trailer, \$10,000**



**28' 1988 Carver,
T/V6 Mercruisers, sleeps 4-6, \$8,000**



**28' 1995 Bayliner Cruiser,
V8 Mercruiser I/O, \$10,000**

36' 1979 Pacemaker FV Convertible, T/350hp V8.....	\$10,900	29' 1982 Aquasport, T/PCM V8 gas, 330hp each, electronics	Reduced \$11,900
36' 1988 Pacemaker FB Convertible, T/Merc 454 cu in V8 gas	\$19,900	28' 2005 Pursuit Walkaround, T/Yamaha 225hp OBs, very clean	SOLD
36' 1985 PT Trawler, T/Perkins 210hp diesels	Owner Wants Offer	26' 2000 Angler Walkaround, trailer, 250hp Johnson OB	SOLD
34' 1981 Silverton FB Conv, T/Crusader V8 gas.....	\$8,900	25' 1973 Bristol Sloop, 9.9hp outboard	\$2,500
33' 1994 Carver, T/Crusader V8 gas	\$30,000		
31' 2005 Carolina Classic Express, T/Volvo Penta D6 310hp Dsls.....	SOLD		
30' 1985 Century 300 Grande, T/V8 gas inboard	Reduced \$7,500		
29' 1996 Dawson Express w/tower, T/Cummins Dsls	SOLD		
29' 2001 Seamaster Classic, 250hp Mercruiser I/O	\$9,900		

- MISC EQUIPMENT -

Approximately 60 lineal feet of 10' wide concrete,

Bellingham Marine Floating Docks, very heavy construction

1950 Hydraulic Cutterhead Dredge, 471 Detroit Diesel, 6' pump.....

Since
1959

HANCE and SMYTHE INC.

Closed
Tuesday

Used Boats Specials!



**2011 Key West 211 DC,
Evinrude 175 HP E-tec, livewell,
stern seats, bimini suntop,
mooring canvas, \$24,500**



**2003 Boston Whaler 270 Outrage,
Dual 2003 Mercury 225hp 4-stroke,
anchor windlass, porc head
w/pump-out, weather curtains, bow
cushions & filler, elects pkg, \$42,000**



**2019 21' Parker 2120 DV Sport Cabin,
Yamaha F200 4-stroke, bow pulpit with
anchor windlass, rocket launcher, spreader
light, Seaspension helm seat upgrade,
portable head w/dockside pumpout,
Garmin GPS, VHF, position indicators for
t-tabs, Tidewater DA trl, \$63,450**



**2014 15' Boston Whaler
150 Super Sport,
Mercury 60hp 4-stroke, full bow rail,
seat cushions, bow cushion, \$15,750**

Leftover Blowout Models!



**Starcraft 1032 Jon Boat
Call for Blowout Price!**



**Starcraft 1232 Jon Boat
Call for Blowout Price!**



**Starcraft 12' Sea Lite
Call for Blowout Price!**



**Starcraft 14' Sea Farer
Call for Blowout Price!**

**Boston Whaler
Parker • Key West
Yamaha
Evinrude/Johnson**

**www.hanceandsmythe.com
(609) 597-7813**

**1225 East Bay Ave
Manahawkin, NJ**



WATERFRONT MARINE

#1 GOLL AVE, SOMERS POINT, NJ ~ 609-926-1700

281 PRINCETON AVE, BRICK, NJ ~ 732-202-6961
"Featuring Chaparral & Carver"

2822 SOLOMON'S ISLAND RD, EDGEWATER, MD ~ 443-949-9041

Premium Brands ~ Exceptional Service

WWW.WATERFRONTMARINE.COM



Robalo R302



Robalo R242



Chaparral 307 SSX



Carver Yacht 34 Coupe

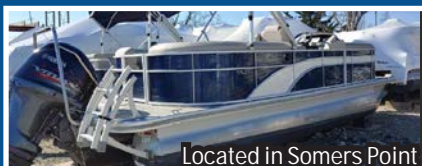


Q28



250 Suncoast

- PREOWNED BOATS -



Located in Somers Point

2018 Bennington 22SSRCXP Pontoon,
Yamaha F150 Vmax • \$44,900



Located in Somers Point

2002 Sea Ray 240 Sundeck
\$12,900



Located in Somers Point

24' '13 Robalo R247DC,
Yamaha F300, electronics, \$58,900

BOWRIDERS & PONTOONS

28' '12 Chaparral 284 Sunesta, Volvo Penta 8.1L 400hp	Pending
28' '12 Chaparral 287 SSX, 8.2L	Pending
28' '15 Chaparral 287 SSX, Volvo Penta 430hp DP, loaded	Pending
27' '10 Chaparral 276 SSX Bowrider, Volvo Penta 8.1L 375 duo prop	Pending
26' '19 Chaparral 264 Sunesta, Volvo Penta 350 DP	\$94,900
26' '16 Four Winns H260	\$64,900
25' '06 Cobalt 250	SOLD
24' '08 Cobalt 242 BR, Volvo Penta 5.0 GI 300hp, no bottom paint	SOLD
24' '11 Chaparral 246 SSI, Volvo Penta 5.7L 300hp DP	Pending
24' '18 Chaparral 2430 VRX	\$68,900
24' '15 Chaparral 243 Vortex	\$49,900
23' '17 Stingray 234 LR, Yamaha F250 Vmax, 97 hours	\$49,900
23' '07 Monterey 234	Pending
22' '04 Chaparral 220 SSI, Volvo Penta 5.0L GXi, '09 Tidewater galv trl	\$22,900
22' '18 Bennington 22 SSRCXP Pontoon, Yamaha F150 Vmax	\$44,900
22' '11 Chaparral 224 Sunesta	Pending
22' '14 Bennington 2275 GCW, Yamaha F150, 2018 Load Rite trl	Pending
22' '06 Sea Ray 220	Pending
20' '11 Stingray 208 LR	Pending
20' '07 Cobalt Bowrider	Pending
19' '16 Nauticstar Deckboat, Yamaha F115 4-stroke	SOLD

CRUISERS & CUDDY CABINS

38' '06 Cruisers Yachts 385 Motor Yacht	Pending
36' '11 Rinker 360 Cruiser	Pending
33' '12 Chaparral 330 Signaure	Pending
29' '00 Sea Ray 290 Sundancer, T/Mercruiser 5.7 EFI 260hp BIII	\$32,900
23' '88 Chaparral 235XLC, 5.7L Merc	\$7,900

FISHING BOATS

30' '00 Pursuit 3070 Offshore, T/2017 Evinrude 300hp G2 Etecs	\$74,900
27' '19 Robalo R272, T/Yamaha F200, lift kept, trailer	Pending
25' '05 Parker 2520 Deep Vee SC, 2006 Yamaha F250, '05 EZ Loader	Pending
24' '18 Robalo 246 Cayman Center Console, Yamaha F300	\$76,900
24' '13 Robalo R247 DC	\$58,900
22' '19 Robalo 226 Cayman Center Console, Yamaha F200, trailer	\$63,997
22' '18 Robalo R222 Center Console, F200 Yamaha, trailer	SOLD
20' '18 Robalo R200 Center Console, Yamaha F150, trailer	SOLD
20' '18 Robalo R202 Center Console, Yamaha F150, trailer	SOLD
20' '96 Trophy 2002 WA	\$8,900
19' '17 Yamaha 190 Center Console, High Output Jet, 70 hours	\$31,900
19' '15 May-Craft 1900 CC, Evinrude 115hp E-Tec, trailer	\$24,900



AUTHORIZED
PARTS &
SERVICE

MERCURY
MerCruiser



YAMAHA
When you want the best

VOLVO
PENTA



Full Service
Marina w/Slips &
Racks Available!

Large Indoor Showroom

OPEN 7 DAYS A WEEK


FOUR WINNS


KEY WEST


Scout
Discover More...


G3 Boats
BAYTON TOUGH

 **YAMAHA** BUILT TO LAST

410.287.8280


ANCHOR
BOATS
North East, Maryland

www.AnchorBoat.com

448 MAULDIN AVE | NORTH EAST, MD 21901

Parts & Service
General Boat Repairs
High & Dry Boat Storage