

Free!



The Salty Dog[®]



CHESAPEAKE BAY EDITION

Published Every Other Week • Distributed in Maryland, Delaware, Southern Pennsylvania and Virginia

POWERBOATS & SAILBOATS ...Including Marine Services



46' 1997 CRUISERS 4270 CRUISER YACHT, 3116 Cats, great condition, new elects & bottom paint, \$122,500, 757-714-3536 or 757-328-8036, Atcon2473@aol.com 153810



19' 1990 SUMMERFORD PRO-MOD RACING STV, 2.5hp Mercury, Sport Master lower, complete rebuild, Diamond Marine lightened fly wheel, exhaust ported, Gaffrig gauges, Call for extras 240-832-5421, labsandpits@comcast.net 153811



2022 JEANNEAU 6.5 LEADER CC, 302-945-2254 • anita@rudymarine.com
See us at the Shore Living Expo at the Ocean City Convention Center • Saturday October 2nd



21' 2021 TIDEWATER 210 LXF, 200hp Yamaha, hard-top, light blue, 8'6" beam, 60 hours, electronics, canvas covers, custom trailer, lift kept, mint condition, \$68,500, 973-628-7117, ljtangorra@yahoo.com 153576

**List Your Boat
As Low As \$49!**

Go to www.thesaltydog.com
to get started!

Private Boat Ads Only



22' 1990 RHODES, refurbished 2016 with 2016 galv trailer and Yamaha OB, Intermax furling main, furling 130 genoa & more, \$16,500 410-647-2755 jschroll@msn.com 152520



2022 COBIA 350 CENTER CONSOLE Triple 300hp, \$Call • 302-436-1737 captain_glen@rt113boatsales.net

AVAILABLE SOON!



20' 2008 CUSTOM V-BOTTOM GARVEY, 3 to 5hp Crusader FWC, low hours, 55 MPH, w/trailer, \$14,500, 609-646-4703 153703



2022 BENTLEY ELITE 302-945-2254 • anita@rudymarine.com
See us at the Shore Living Expo at the Ocean City Convention Center • Saturday October 2nd

Annapolis, MD • St. Michaels, MD
Deltaville, VA • Woodbridge, VA
Delaware City, DE

CONTACT US TODAY!

info@curtisstokes.net
410.919.4900

**CURTIS
STOKES**
& ASSOCIATES

www.curtisstokes.net

1-888-843-1585 • Private Boat Information on Page 18

Rt. 113 Boat Sales and Service



Selbyville, DE 302-436-1737
www.Rt113BoatSales.net

TAX FREE

YAMAHA

SAY YOU SAW THIS IN THE SALTY DOG!

f YouTube



Just Better Built in Every Way!

350 CC

COBIA



330 DC

Your EXCLUSIVE Dealer
ALL OF MD, DE AND PARTS OF VA

Call us for Details 302.436.1737

BOATS AVAILABLE WITH
SPECIAL ORDER DISCOUNTS & PRE-PRICE INCREASE*

- Cobia 220 CC powered by a F200 Yamaha
We have 7 more 220 CC available for 2022
- Cobia 240 DC powered by a F300 Yamaha
We have 1 more 240 DC available for 2022
- Cobia 280 CC powered by a Twin F200 Yamaha
We have 4 more 280 CC available for 2022
- Cobia 280 DC powered by a Twin 250NSB Yamaha
We have 1 more 280 DC available for 2022
- Cobia 320 CC powered by a Twin XF425 Yamaha
We have 1 more 320 CC available for 2022
- Cobia 330 DC powered by a Twin XF425 Yamaha
We have 3 more 330 DC available for 2022
- Cobia 350 CC powered by a Triple F300 Yamaha
Available in September with Special Order Discounts

Pathfinder Boats Available Model Year 2022
2005 TRS, 2200 TRS, 2400 TRS,
2500 HYBRID, 2600 TRS, 2700 TRS

*** GET YOUR NEW BOAT THIS YEAR AND BEAT THE
TURN OF THE YEAR PRICE INCREASE GUARANTEED!**

PATHFINDER
ANGLER DRIVEN



2700 OPEN

**Now is the Best Time
to CASH OUT!**

We handle Funding, Payoff, National MLS and
Transport-Delivery to Anywhere in the USA

**Get your Boat Sold FAST
and for Top Dollar!**

Clean late models, years 2005 and up
powered with Yamaha Outboard Motors

Brokered Boats WANTED!
Clean, Late Models up to 35 ft. LOW FEES - GREAT RESULTS!



**BOAT TRAILERS AT
WHOLESALE PRICING!**

HAUL OUT AND TRANSPORT SERVICES AVAILABLE

RT113BoatSales.net

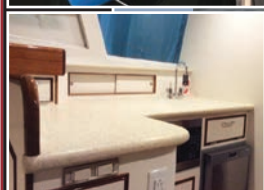
Upper Chesapeake Yacht Sales

John Curry • (610) 299-3598

www.upperchesapeakeyachtsales.com



31' 2013
Bertram Custom
Sportfish
\$395,000



One of the absolute finest 31' Bertram re-manufactured boats built by renowned Worton Creek Marina. The hull is a 1963 rock solid Bertram that was meticulously restored in 2013 at a cost in excess of \$500,000 and has been kept in a covered shed since completion now having approximately 160 hours on her Yanmar diesels. This is a must see for the discriminating Buyer looking to purchase a great fishing and cruising vessel that may also be considered a maritime "work of art". Boat truly shows as new!



62' '03 Bruce Roberts Expedition Trawler, loaded and mint \$1,399,900



40' '81 Bristol Sloop, diesel, mint, classic, \$55,000



38' '89 Sea Ray Aft Cabin, T/7.4L, gen, AC, very nice \$54,900



Reduced!

37' '95 Sea Ray Sundancer, T/7.4L, gen, AC • \$58,900



29' '84 Dyer Soft Top Express, 200hp diesel, very nice • \$64,900



28' '74 Bertram FB, newer 315 Inboards, AC, clean • \$24,900



Reduced!

27' '02 Rinker 270 Fiesta Vee, new engine & Bravo III, trailer available, very nice • \$27,900



SOLD!

27' '17 Scout 275 Dorado, T/200hp Yamahas, loaded, trailer, mint • \$159,900



18' '06 Four Winns Bowrider, 135hp Volvo, '17 trailer, nice • \$10,900



SOLD!

15' '06 Key West Center Console, Yamaha 4-stroke, trailer, mint condition \$10,900

36' '78/'07 Jarvis Newman FB, \$500K refit, 330hp Cummins, gen, AC, mint	\$134,900
34' '00 Baja 342 Boss, T/415hp, very nice, trailer	\$54,900
31' '61 Bertram SF, T/250hp Cummins, new deck & fuel tank, needs work	\$49,900
27' '02 May-Craft Pilothouse, T/'06 200hp E-Tec, trailer, nice	\$42,900



Expect The Same
Superior Service From Our
Brokerage That You Get
From Our Marina

BOAT SALES & BROKERAGE
• Financing & Insurance Available •

WORTON CREEK MARINA

23145 Buck Neck Road • Chestertown, MD 21620

(410) 778-3282



WANT TO SELL YOUR BOAT FAST ?

A successful brokerage program starts with exposure. Due to our size, Clarks Landing can offer more exposure than most other brokers.

- ✓ Reduced Commissions
 - ✓ Free Land Storage Program
 - ✓ In House Market Team
 - ✓ Family-Owned over 40 Years
 - ✓ **Free Drone Media Package for Listings over \$100K**
- Locations in NJ & MD*



2016 37
Ocean Billfish
New Listing
\$599,000

2017 Riviera
3600 Sport Yacht
New Listing
\$429,000

IN TODAY'S MARKET, YOUR BOAT WILL NEVER BE WORTH MORE THAN IT IS **RIGHT NOW. OUR EXPERIENCED BROKERS WILL SELL YOUR BOAT FOR TOP DOLLAR.**

Get A Free Market Analysis

www.ClarksLanding.com

LIMITED INVENTORY!!!

Buy Now & Cruise Later!

Scan QR Codes with Your Phone's Camera for Details & Video Tours



on the Manasquan River
847 Arnold Avenue
Point Pleasant, NJ

732-899-5559 • www.ClarksLanding.com



Annapolis Boat Show Super Sale

at VIP Tents Land Spaces 81 & 82 • Oct 7-10



JEANNEAU

AT THE SHOW!



AT THE SHOW!



AT THE SHOW!



AT THE SHOW!



AT THE SHOW!



VIAGGIO

ALL BOATS POWERED BY



YAMAHA

Bentley



See us
Shore Living Expo
Ocean City MD Convention Center
Saturday October 2nd



Rudy Marine.com

Where Family Boating Begins

Delaware has
NO SALES TAX!
3 GREAT LOCATIONS!



REPOWER HEADQUARTERS



302-945-2254 • 32606 DuPont Blvd Dagsboro, DE 19969
443-995-3785 • 3033 Kent Narrows Way South, Suite 3 Grasonville, MD 21638





825 Bowleys Quarters Rd. | Middle River, MD 21220
410-335-6200
beaconlightmarina.com | sales@beaconlightmarina.com

WITH SO MANY WAYS TO HAVE FUN ON A YAMAHA,
It's easy to find yours at Beacon Light Marina



ALMARS

We Are A Full Service, Premier Mercury Outboard Repair Center! Let Our Certified Mercury Technicians Service Your Mercury Motor Needs!

LEFTOVER VERADO SALE!

**CALL FREQUENTLY FOR
UPDATED INVENTORY!**

**MOTORS ARE
ARRIVING DAILY!**



**225hp
black • \$14,995**



**250hp
black • \$15,995**



**300hp
black • SOLD**



**300hp
white • \$18,995**



**350hp
Call for Great Deal!**



**350hp
Call for Great Deal!**

**We Now
Offer
INJECTOR
SERVICE
with
ONE Day
Turnaround!**



**150
4-stroke
Black**



**150 ProXS
4-stroke
Black**



**175XL ProXS
4-stroke
Black**



**200
Sea Pro
Black**



**225XL
4-stroke
Black**



**250 XL
4-stroke
White**

**100's of Used Cowllings
In Stock!
Call for Availability!**

**250XL PRO
VERADO 15,995
Only 1 Available**

REMANUFACTURED OUTBOARD ENGINE SALE!

90hp - 250hp 1 Full Year Warranty

Starting As Low As \$5,495 Call for Details!

**CALL US
FOR GREAT
DEALS ON
NON-CURRENT
POWERHEADS!**

**Call us for current pricing new current
and noncurrent outboards
NO SALES TAX IN DELAWARE!**

701 Washington St., New Castle, DE

302-328-8541

www.almarsoutboards.net

HOURS: Monday - Friday: 8am - 5pm

**CALL FOR GREAT PRICING ON NEW
& USED MERCURY OUTBOARDS**

NO HIDDEN COSTS

NOT RESPONSIBLE FOR TYPOGRAPHICAL ERRORS

**All prices good
while supplies last!**

MERCURY
'1 On The Water'

Pricing includes all rebates.

Are you thinking about listing your yacht or boat for sale?

At Curtis Stokes & Associates, **WE COOPERATE WITH ALL BROKERS** on our listings, not just our direct buyers.

Some yacht brokers no longer cooperate with other brokers. If you list your yacht or boat with one of these brokers, you will possibly miss one of the many potential buyers for your yacht or boat who are working with a buyer broker. While these brokers are trying to maximize their profit, you are possibly missing potential buyers for your yacht or boat.

If you aren't sure whether or not a broker cooperates with other brokers, contact me directly anytime and I will tell you that broker's co-brokerage policy. Remember, not available for co-brokerage means it could take longer to sell your boat and you might not get the highest possible price, whereas available for co-brokerage means your boat will probably sell quicker and have more competing buyers.

List with us and you are guaranteed to get maximum exposure to ALL potential buyers!



Curtis Stokes | 954.684.0218 | curtis@curtisstokes.net
www.curtisstokes.net



23 Ultra



24 HFC



Powered by:



DANNY'S MARINE
(410) 228-0234 • www.dannysmarine.com
 Located on US Rt 50 (mile marker 86) • Chateau Drive near Linkwood, MD
dannysmarine@comcast.net

Limited Time Offers. Not all models qualify. See Participating Suzuki Marine dealer for details or visit www.suzukimarine.com
 ©2020 Suzuki Motor of America, Inc.

CLARKS FLOATS

PIER & PILE

443-871-0436 • CLARKSFLOATS@GMAIL.COM

CLARKS FLOATS PIER & PILE

- Floating Docks
- Pile Driving
- Re-Decking

MMCLB #390 I



8x16 KAYAK DOCK



8x12 KAYAK ACCESS

**Any Custom
Size Float
Available!**



Kayak Floats
 Dock Sections • Work Rafts
 Swim Platforms • Gang Planks
 SS Fasteners • #1 P.T. Lumber
 Perma Float Floats
 Composite Decking

Deale, MD



ANNAPOLIS CRUISAIR, INC.

Family Owned & Operated for Over 50 Years

SALES • SERVICE • INSTALLATION



U-LINE
U-Line Ice makers
110/115vAC

We will meet or beat
any competitive
price quote for
these products!



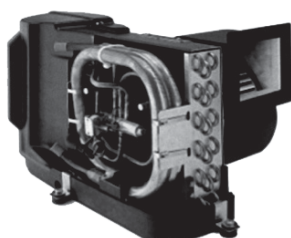
Espar

Marine Diesel
Heaters



Cruisair®

New Turbo
Air Conditioners • Heat Pumps



• We Have • BREATHE EASY AIR FILTERS

Sentry™
Cruisair

BATTERY
CHARGERS



SAFEST
CHARGER
ON THE
MARKET!

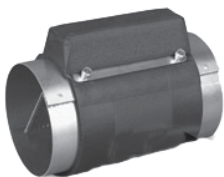
**Eskimo Ice
600 Ice Pump**

Provides up to 600 lbs. of fresh
ice in a day from your ships
water tank.



STINKY BOAT?

We Have **NEW**
Breathe Easy
Air Purifiers



DOMETIC

SPOTZERO®
Fresh Water Reverse Osmosis

Water Purification Systems



Vitrifrigo
REFRIGERATORS

WAECO
Adler/Barbour®



MARINE AIR SYSTEMS®

AIRRRRRRRRR

by Dometic GROUP



KOHLER.

- Generators -

Onan



Fischer Panda

2124 Renard Ct. • Annapolis, MD

(410) 224-0970 • (410) 974-6136 • Fax (410) 224-0050

www.annapoliscruisair.com



OWN THE BOAT OF YOUR DREAMS



Become the next “**Just Financed**”.
Apply online at **JJBEST.COM** or call **800-USA-1965**.

Offering low rates, long terms, and no prepayment penalties.
Simple application and quick funding.

Looking to refinance? We can help with that too.



"Where Happiness Is Just A Boat Ride Away"

www.crisfield.com/gold



\$17,875

2021 Lowe RX1660 Jon
Side Console Package
Mercury 25 ELPT 4-stroke, Roughneck Floor
upgrade, EZ Loader 1250 galv trl



Buy A Mercury 2.5 MH
4-stroke at \$699
and Goldsborough's
will Donate \$25 to
Women Supporting Women



\$24,495

2021 18 Lookout Skiff
Open Tiller Package
Mercury 50 ELPT Big Tiller,
EZ Loader aluminum trailer



58BS 14-800
Galv. Short Bunk
\$975



Trailer
Blowout
Special!



16170076DWT Galv. Bunk....\$2,695
18150076DWT Galv. Bunk....\$2,895
5 Star
5S-172450VT Galv. Bunk\$2,345

Goldsborough's Marine

709 W. Main St., Crisfield, Maryland • Ph.# 410-968-0852 • Email: merc71@verizon.net

Fishin' Boats From
Fishin' Folks

LATE SEASON SAVINGS!



\$70,000

1992 Mako 261B
Twin 2012 Yamaha 300, Includes Trailer



\$55,000

2017 Key West 219FS
Yamaha F200XB



\$29,900

2019 Mako Pro 17CC Skiff
Includes Trailer



\$36,995

2018 G3 Bay 20 DLX
Yamaha VF115LA, Includes Trailer



\$24,995

2019 G3 18SC Camo
Yamaha F70LA, Includes Trailer



\$159,900

2006 Pursuit 3480 Drummond
Island Runner Twin Yamaha F300
4.2L Offshore V6, Includes Trailer

Yamaha Warranty
& LOW HOURS

GOOTEE'S MARINE

South of Cambridge On Maryland's Eastern Shore
1439 Hooper's Island Road, Church Creek, Maryland



800-792-0082

Gootees.com

HEROIC PERFORMANCE

SERVED IN 4 TANTALIZING FLAVORS

Engineered specifically for severe applications in a marine environment with the capability and durability to accommodate all your boating activities on a wide variety of vessels. The Raptor Series by Indmar offers superior craftsmanship in an exclusive line-up that defies every challenge, especially the test of time.



400



404 lb-ft of Torque
350 Horsepower



440



427 lb-ft of Torque
398 Horsepower



460



452 lb-ft of Torque
410 Horsepower



575



580 lb-ft of Torque
510 Horsepower

ENGINE
DISTRIBUTORS
INC. 

Indmar
MARINE ENGINES

800-220-2700 | www.edi-dist.com

RAPTOR
Indmar

ADVERTISERS INDEX

ALMARS.....	7	GEICO.....	16
ANCHOR BOATS.....	24	GOLDSBOROUGH'S MARINE.....	12
ANNAPOLIS CRUISAIR.....	10	GOOTEE'S MARINE.....	12
ATC AUTO/MARINE TRAINING.....	15	HF FISHER AND SONS.....	19
BEACON LIGHT MARINA.....	6	JJ BEST BANC & CO.....	11
BOAT LIFTS UNLIMITED.....	14	RT 113 BOAT SALES.....	2
CLARKS FLOATS.....	9	RUDY MARINE.....	5
CLARKS LANDING.....	4	UPPER CHESAPEAKE YACHT SALES..	3
CURTIS STOKES.....	8, 22	US POWER BOAT SHOW.....	17
DANNY'S MARINE.....	9	UTSCH'S MARINA.....	19
ENGINE DISTRIBUTORS.....	13	WATERFRONT.....	15, 23

THE LARGEST LOW PROFILE BOAT LIFT MANUFACTURER IN THE USA

**CALL
US FOR
YOUR LOCAL
DEALER!**



Choose The Right Boat Lift, Choose

- Low Profile Design • Low Maintenance • 2/5 Yr Warr.
- Outside Walkway • Galvanized Steel Construction
- Aluminum Cradles Available • Capacity 800-40,000 lbs. www.magnumlift.com

MAGNUM
BOAT LIFTS
Personal Watercraft Lifts

Fully
Insured

BOAT LIFTS UNLIMITED
410-674-3100 • 1-800-268-5911

**WE SERVICE
MOST MAKES
OF BOAT
LIFTS!**

Located in Odenton, MD, this full-service boat lift manufacturer has a network of over 180 distributors serving the Chesapeake Bay, Great Lakes and Atlantic Coast with Magnum Boat Lifting Products. Boat Lifts Unlimited is dedicated to customer satisfaction through prompt, courteous service on most existing boat lifts and timely installation of new boat lifts. Quality materials, attention to detail and innovative design have made Boat Lifts Unlimited one of the largest boat lift manufacturers in the U.S.



WATERFRONT MARINE

#1 GOLL AVE, SOMERS POINT, NJ ~ 609-926-1700

281 PRINCETON AVE, BRICK, NJ ~ "Featuring Chaparral & Carver" 732-202-6961

2822 SOLOMON'S ISLAND RD, EDGEWATER, MD ~ 443-949-9041

Premium Brands ~ Exceptional Service

WWW.WATERFRONTMARINE.COM

CONTENDER

Waterfront Marine is Proud to Now be the Authorized Dealer for Contender Boats in Delaware, Maryland & Virginia.

2022 Contender 44 ST Factory Demo!

Triple Yamaha 425 XTO's, electronics, Sea Keeper, loaded w/options & features, new warranties, Available for Immediate Delivery!

Call Today for Pricing!



AUTHORIZED
PARTS &
SERVICE

MERCURY
MerCruiser



YAMAHA
When you want the best

VOLVO
PENTA



Full Service
Marina w/Slips &
Racks Available!

MARINE TECHNICIAN TRAINING

RIDE THE CREST to CAREER SUCCESS



ENROLL FOR TRAINING TO BECOME A PROFESSIONAL MARINE SERVICE TECHNICIAN

Our in-depth program includes training in: Seamanship, AC & DC Electrical, ABYC Standards, Air Conditioning & Refrigeration, Mechanical Systems, Stern Drives/Transmissions, Computerized-Fuel Injected Inboard and Outboard Engines, Inboard, Outboard and I/O Systems, Electronic Diesel Engines (Cummins QSB 5.9 380 HP Common Rail Trainer), Fiberglass & Gelcoat Repair, Plumbing and Sanitation Systems.

Financial Aid for those who Qualify • Career Placement Assistance



CALL NOW **866-905-4278**

www.autotraining.edu


900 Johnsville Blvd., Warminster, PA 18974

Supported by



with Training Materials & Equipment

For required program disclosure information, please go to www.autotraining.edu/consumerinformation.



**YOUR
ENJOYMENT
MADE EASY**

GEICO[®]
FOR YOUR BOAT

Get a GEICO quote for your boat and, in just 15 minutes, you'll know how much you could be saving. If you like what you hear, you can buy your policy right on the spot. Then let us do the rest while you enjoy your free time with peace of mind.

geico.com/boat | 1-800-865-4846

Some discounts, coverages, payment plans, and features are not available in all states, in all GEICO companies, or in all situations. Boat and PWC coverages are underwritten by GEICO Marine Insurance Company. In the state of CA, program provided through Boat Association Insurance Services, license #0H87086. GEICO is a registered service mark of Government Employees Insurance Company, Washington, DC 20076; a Berkshire Hathaway Inc. subsidiary. © 2020 GEICO 20_206641

WELCOME BACK TO ANNAPOLIS



UNITED STATES POWERBOAT SHOW

OCTOBER 7-10, 2021
CITY DOCK, ANNAPOLIS, MD



SHOW UPDATES + TICKETS: AnnapolisBoatShows.com



FREE LISTING WITH PHOTO ON THE INTERNET

PRIVATE AD RATES

- ☐ INTERNET ONLY UP TO 1 YEAR..... \$39⁰⁰
☐ 3 ISSUES NO PHOTO CLASSIFIED..... \$49⁰⁰
☐ 3 ISSUES WITH COLOR PHOTO WITH COLOR PHOTO ON INTERNET..... \$59⁰⁰
☐ INTERNET FEATURE ADD ON 4 WEEKS AVAILABLE WITH AD PURCHASE ONLY! ON THE SALTY DOG HOME PAGE..... \$49⁰⁰
☐ FRONT COVER..... \$40⁰⁰
☐ FACEBOOK FEATURE..... \$15⁰⁰
☐ PUBLICATION MAILED TO YOU..... \$3⁰⁰

TOTAL

FRONT COVERS ARE BASED ON AVAILABILITY

- ☐ CHECK ☐ MONEY ORDER ☐ DISCOVER
☐ MASTERCARD ☐ VISA ☐ AMERICAN EXPRESS

CC#

Expiration Date _____ Security Code _____

Advertiser's Name

Address

Phone

Where did you pickup "The Salty Dog"?

Store

Town

Fill out the description form below, **up to 125 characters (including spaces & punctuation) of advertising**. Please put one character per space beginning with the motor. Include a check, money order or credit card, and mail to us with a good quality COLOR photograph of your boat. Photos will only be returned if accompanied by a self-addressed stamped envelope.

AD COPY

FT. _____ YR. _____

MANUF. / MODEL _____

MOTOR _____

ACCESSORIES _____

LOCATION OF BOAT _____, _____, _____
City State Zip Code

PRICE _____

PHONE # _____

EMAIL _____

Send to: The Salty Dog
254 Brick Blvd • Suite 1
Brick, NJ 08723

888-843-1585

Fax (732) 477-9000 • Email: info@thesaltydog.com

No refunds after Ad is processed. • Advertiser will be responsible for \$20 fee on returned checks.

YOUR BOAT LISTING CAN ALSO BE SUBMITTED ON THE INTERNET www.thesaltydog.com

SPECIAL Upcoming Boat Show Pg. 17
FEATURES Private Boat Ads Pgs. 20-21

SUBSCRIPTION CHESAPEAKE BAY

SALTY DOG is published Bi-weekly 25 times a year.

Papers are mailed **FIRST CLASS**. Your first issue will be mailed within 1 week.

To subscribe, just fill in the amount of issues and multiply by \$2.00*

No. of issues _____ x \$2.00* = Total Cost _____

☐ CHECK ☐ MONEY ORDER ☐ MASTERCARD ☐ VISA

Credit Card No. _____

Exp. Date _____

Signature _____

Name _____

Address _____

City _____ State _____ Zip _____

Telephone _____

*Canada Subscription Add 10% - Bermuda Subscription Add 30%
 Outside the Continental USA Add 50% • Credit Cards Only Outside USA



Mail To: THE SALTY DOG, 254 Brick Blvd • Suite 1, Brick, NJ 08723



A Bi-weekly Publication for
 Powerboats, Sailboats, Marine
 Equipment, Supplies, Services,
 Waterfront and Photo Ads

For More Info on Display Ads or Internet Listings

Call 888-843-1585 • Fax (732) 477-9000

info@thesaltydog.com • Mon.- Fri. 9:00 am to 4:00 pm

WINTER STORAGE COVERS

Light Weight Industrial Strength Material

MORE ECONOMICAL THAN "SHRINK WRAP"/LIGHTER AND LESS EXPENSIVE THAN CANVAS/BETTER FITTING THAN A TARP

So light and easy to put on, it requires no more than two people to cover your "investment" • 1 Year Warranty for Fit and Workmanship

No More Breaking Your Back Or The Bank!

www.hffisherandsons.com

H.F. FISHER & SONS, INC.

875 Industrial Highway Unit 8 • Cinnaminson, NJ 08077

Since 1954

Call Us Now...or Call Your Shrinkwrap Guy Again and Again and Again

1-800-624-2868 • 1-856-461-2883

UTSCH'S YACHT SALES

BETWEEN CANAL AND SCHELLENGER'S LANDING

Rt. 109 & Cape May Canal, Cape May, NJ (609) 884-BOAT (2628)

LICENSED

www.capemayharbor.com

INSURED



42' 1999 Evans Somerset 42 Pilothouse Workboat, T/Dsl 760hp • \$197,000



40' 2001 Carver 374 Voyager, T/320hp Mercs • \$65,000



35' 1975 Gulfstar Trawler, T/Dsls • \$19,900



34' 1986 Silverton Convertible, T/V8 gas • \$12,500



32' 1993 Carver, T/Gas V8s • \$19,900



31' 1998 Tiara Express, T/Crusaders, \$39,900



28' 1988 Carver, T/V6 Mercruisers, sleeps 4-6, \$6,000



28' 1995 Bayliner Cruiser, V8 Mercruiser I/O, \$10,000

36' 1979 Pacemaker FV Convertible, T/350hp V8	\$10,900
36' 1988 Pacemaker FB Convertible, T/Merc 454 cu in V8 gas	SOLD
36' 1985 PT Trawler, T/Perkins 210hp diesels	SOLD
34' 1981 Silverton FB Conv, T/Crusader V8 gas	\$7,900
33' 1994 Carver, T/Crusader V8 gas	\$30,000
32' 2006 Rinker, T/V8	OFFERS
30' 1985 Century 300 Grande, T/V8 gas inboard	Reduced \$7,500
29' 1996 Dawson Express w/tower, T/Cummins Dsls	SOLD
29' 2001 Seamaster Classic, 250hp Mercruiser I/O	\$9,900
29' 1982 Aquasport, T/PCM V8 gas, 330hp each, electronics	Reduced \$11,900
28' 1976 Luhrs Flybridge Sedan, Crusader V8	\$2,500

28' 1974 Bertram, T/V8	\$4,900
28' 1981 Silverton Convertible, T/V8 gas, AS IS, REPO	CALL
28' 2005 Pursuit Walkaround, T/Yamaha 225hp OBs, very clean	SOLD
25' 1973 Bristol Sloop, 9.9hp outboard	\$2,500
17' 2002 Aquatron, Merc I/O, trailer	\$6,500
15' Custom Wood Skiff, nice condition	\$1,000

- MISC EQUIPMENT -

Approximately 60 lineal feet of 10' wide concrete, Bellingham Marine Floating Docks, very heavy construction	\$4,000
1950 Hydraulic Cutterhead Dredge, 471 Detroit Diesel, 6' pump	\$29,000

See Color Photo on the Internet



46' 2000 MARKLEY 46, Twin 3208 435 hp 5500 hrs new ac gen updated electronics ready to fish coast guard inspected current col 32 passengers, \$195, 443-324-4982 Randy. Bailey@Whiting-Turner.com 153586

See Color Photo on the Internet



36' 1987 SILVERTON convertible, T/350 Crusader CID 270hp, exc cond, runs very good, full encl, bottom paint 8/21, new sea pumps FWC, available w/slip for \$23K, \$20,000, 410-365-0318 gseacurty@aol.com 153759

See Color Photo on the Internet



27' 1997 ALBEMARLE CUDDY, T/5.7L Volvo I/Os, electronics, excellent condition, \$33,500, 609-729-4774 sales@pier47.com 153609

See Color Photo on the Internet



40' 2006 FORMULA 400 SS, T/Volvo Dsls, many updates, loaded, \$219,000, 609-693-9423 tidesendmarina1@gmail.com 153565

See Color Photo on the Internet



35' 2019 PURSUIT OS355 OFFSHORE, Triple Yamaha F300, loaded, generator, like new, \$499,900, 609-368-1141 stoneharboryachts@gmail.com 153517

See Color Photo on the Internet



26' 1986 CHAPARRAL XCL278, Jasper 350 c.i.d, use for fishing, trolling around with the family or both, \$7, 202-923-0551 mm_case@hotmail.com 153629

See Color Photo on the Internet



40' 1993 SEA RAY EXPRESS CRUISER

T/350 Merc, well maintained, new exhaust risers, elbows, manifolds, impeller batteries, \$8000 in mechanical work just completed, too much to list, currently living in the boat

\$49,900

215-722-3395

Adventurechris@aol.com

153760

See Color Photo on the Internet



31' 2000 SEA RAY 310 SUNDANCER, T/Merc 5.7L, Bill, gen, windlass, remote spotlight, power vent, ready to cruise! \$54,900 OBO, 917-817-5084 info@deepwaterlanding.com 153035

See Color Photo on the Internet



25' 1998 SEA RAY 250 SUNDANCER, V8 4.2L Merc, Bill OD, 110/12V fridge, windlass, hot water heater, full canvas encl w/bi-mini, Garmin GPS/FF, Standard Horizon VHF & stereo, \$25,000, 732-899-8010 sales@schraderyachts.com 153691

See Color Photo on the Internet



30' 2008 GRADY-WHITE 306 BIMINI, T/F350hp Yamaha OBS, 80 hours, t-top, leaning post, dockside power, windlass, radar, GPS, VHF, Call for Price! 732-929-1711 Tom@hobbylobbymarine.com 153688

See Color Photo on the Internet



23' 2019 SPORTSMAN 231 HERITAGE PLATINUM EDITION, 250hp Yamaha 4-stroke, 100 hours, Garmin GPS, FF, DF, console cover, \$72,000, 732-684-5077 cnote797@yahoo.com 153690

See Color Photo on the Internet



36' 2002 SPECTRE CAT, Twin 500hp Mercruisers, low hours, extremely well kept, immaculate condition, trailer included, \$89,995, 732-864-6937 jeremypeters2002@gmail.com 153768

See Color Photo on the Internet



28' 2016 SEA RAY, 400hp Merc I/O, Kohler gen, grill, stereo, Raymarine VHF/GPS/sonar, micro, fridge, AC, \$119,900, 732-899-8010 sales@schraderyachts.com 153611

See Color Photo on the Internet



23' 2016 SEA BORN SX239

Yamaha F300hp, 226 hrs, Sea Foam Green hull, t-tabs, SS anchor, porta potti w/dockside pumpout, leaning post, Simrad VHF radio, (2) GPS/sonar units, stereo

\$65,000

732-899-8010

sales@schraderyachts.com

153612

See Color Photo on the Internet



36' 1989 TROJAN 12M CONVERTIBLE, T/671 Ti Detroit Diesel engines, Onan 8kW diesel generator, galley down, \$59,500, 732-899-8010 sales@schraderyachts.com 153259

See Color Photo on the Internet



28' 1988 BERTRAM FLYBRIDGE, T/Captain's Choice Crusaders, less than 400 hours, 11' beam, new fuel tank, full enclosure, electronics, \$35,995, 908-309-4016 almarina1@gmail.com 152807

See Color Photo on the Internet



23' 1979 MAKO 23, Mercury, restor'd 2007 Mako CC w/U fwds eating, slim 8' beam, low gunnel hgt, outfitted 4 fishing with undr-gunwale and cockpit rod storage, fishboxes, hydrlc steering, built-in cooler. Option incld t-top rckt launcher

\$14,500

917-701-7548

vigilantdesign@gmail.com

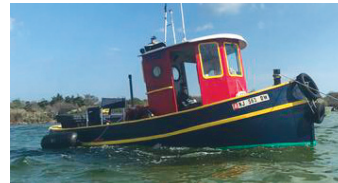
153715

See Color Photo on the Internet



21' 2016 BENNINGTON 22SFXAPG, Yamaha 115, Great cond. 118.5 eng hrs. Lowrance HDS7 w/ struct. scan, salt package, priv encl., Loadrite tandem galv. trailer, 2 livewell, **\$37,500, 484-705-6720 richm@valleyrockssolutions.com** 153739

See Color Photo on the Internet



20' 1983 CUSTOM BUILT Mini Tugboat, 20hp Diesel yanmar keel cooled dry stack exhaust inc trailer in water, **\$15,000, 609-519-3583 harbournj@yahoo.com** 153457

See Color Photo on the Internet



21' 1990 CHRIS CRAFT 213, Evinrude 200hp, over \$4,000 spent to make ready, with trailer, **\$9,000, 443-553-3228 rljohnson@zoominternet.net** 153575

See Color Photo on the Internet



16' 20 TRACKER Pro 160, Mercury 40, 5 hours since new, 2 batteries, Minkota Edge trolling motor, Garmin Echomap GPS, Lowrance Hook fish finder, like new., **\$14,900, 609-949-2099 dmontagano@outlook.com** 153482

See Color Photo on the Internet



21' 2021 Tidewater 210 LXF, Yamaha 200hp, hardtop, light blue, 8'6" beam, 60 hrs, elects, canvas covers, custom trailer, kept on lift, mint condition, **\$68,500, 973-628-7117 ljtangorra@yahoo.com** 153576

See Color Photo on the Internet



20' 2001 GRADY-WHITE Grady-White, Yamaha 150hp SWS, 200 hrs, like new, new Maxwell windlass, Lowrance HDS gen 3 CP/FF, Sunbrella nimini top New, alum bunk trl-like new, **\$16,500, 443-275-3803 bennarbut1@gmail.com** 153583

See Color Photo on the Internet



43' 1973 GULFSTAR 41 CC SLOOP, 50hp Perkins, 12ft Beam. Great Shape, no soft spots, recent survey all excellent., **\$21,000, 973-851-2555 michaelscott-crowell@gmail.com** 153266

2009 MONTEREY 254 FS BOWRIDER

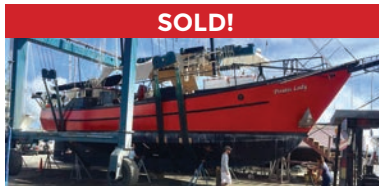


BRAND NEW 5.7L Mercruiser 350 MPI engine, 1 year engine warranty, runs perfect, GPS, canvas, bimini, very roomy, huge swim platform, fresh bottom paint

\$39,900 • 732-267-6822



Worldwide Yacht Sales | Yacht Charters | New Yacht Construction



SOLD!

72' Trade Rover



SOLD!

50' Chris-Craft



SOLD!

48' Evans Boats



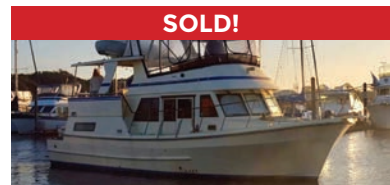
SOLD!

44' DeFever



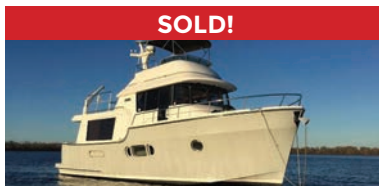
SOLD!

44' Gulfstar



SOLD!

42' Fu Hwa



SOLD!

40' Fathom



SOLD!

40' Hinckley



SOLD!

36' C&C



SOLD!

36' Bristol



SOLD!

32' Eagle



SOLD!

26' Sisu

List your boat with us and join our **SOLD** list!

To see more details about these and all other yachts around the globe, please visit our website below.

Annapolis, MD • St. Michaels, MD • Delaware City, DE • Deltaville, VA • Woodbridge, VA
Telephone: 410.919.4900 • Email: info@curtisstokes.net

www.curtisstokes.net



WATERFRONT MARINE

#1 GOLL AVE, SOMERS POINT, NJ ~ 609-926-1700

281 PRINCETON AVE, BRICK, NJ ~ "Featuring Chaparral & Carver" 732-202-6961

2822 SOLOMON'S ISLAND RD, EDGEWATER, MD ~ 443-949-9041

Premium Brands ~ Exceptional Service

WWW.WATERFRONTMARINE.COM

ORDER YOUR BOAT NOW!

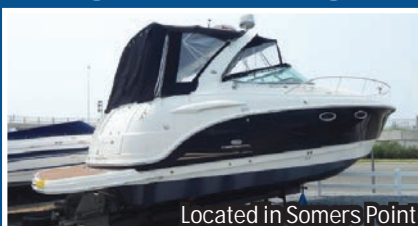


- PREOWNED BOATS -



Located in Somers Point

2008 Century 2200 Center Console
Yamaha F200 Outboard, lift kept • **\$45,900**



Located in Somers Point

2006 Chaparral 330 Signature
T/Volvo Penta 320hp • **\$110,000**



Located in Somers Point

2012 Cherubini 24
Merc 5.7L 300hp • **\$149,900**

BOWRIDERS & PONTOONS

28' '12 Chaparral 287 SSX, 8.2L	Pending
28' '20 Chaparral 280 OSX	SOLD
28' '18 Chaparral 287 SSX	SOLD
28' '17 Chaparral 284 Sunesta, Volvo Penta 380 DP	\$89,900
28' '18 Chaparral 287 SSX, Volvo Penta 380 DP	SOLD
27' '06 Chaparral 276 SSI, 8.1L Volvo	\$39,900
27' '10 Chaparral 276 SSX, Volvo Penta 8.1L 375 duo prop	Pending
26' '21 Chaparral 267 SSX, Volvo Penta 350 SSX	\$125,900
26' '13 Chaparral 264 Sunesta BR, Volvo Penta 320 DP	Pending
25' '18 Chaparral 257 SSX, Volvo Penta FWC 300hp DP	\$87,900
24' '18 Chaparral 244 Sunesta, 300hp Volvo, 72 hours	\$74,900
24' '15 Chaparral 246 SSI, Volvo 300hp DP, 156 hours	\$64,900
24' '18 Chaparral 246 SSI, Volvo Penta V8 300DP	\$82,900
24' '12 Cherubini 24, Merc 5.7L 300hp	\$149,900
24' '11 Chaparral 246 SSI, Volvo Penta 5.7L 300hp DP	Pending
24' '18 Chaparral 2430 VRX	Pending
24' '15 Chaparral 243 Vortex	Pending
23' '19 Chaparral 230 Suncoast, F200 Yamaha	\$59,990
23' '04 Yamaha AR230 Jet Boat, w/trailer	Pending
22' '16 Chaparral 224 Sunesta BR, Volvo Penta 280hp	\$56,000
22' '16 Chaparral 223 Vortex VRT Jet Boat	\$44,500
21' '21 Chaparral 21 SSI OB, Yamaha F150, 17 hours, alum trl	\$52,000
20' '21 Bayliner VR5 Bowrider	\$39,900

CRUISERS & CUDDY CABINS

36' '11 Rinker 360 Cruiser	SOLD
33' '06 Chaparral 330 Signature, T/Volvo Penta 5.7 DP	\$99,900
33' '12 Chaparral 330 Signature	SOLD
29' '19 Jeanneau NC 895 Offshore, T/Yamaha F200XCA OBs	\$189,000
24' '03 Chaparral 240 Signature, Volvo Penta 5.0L 260 DA	\$24,800
23' '88 Chaparral 235XLC, 5.7L Merc	SOLD

FISHING BOATS

35' '12 Everglades 350 LX, Triple Yamaha 350s	\$239,800
30' '20 Robalo R302 CC, T/Yamaha F300, '21 Venture tri-axle trl	\$199,900
30' '17 Robalo R302 CC, T/Yamaha 300hp	Incoming
27' '16 Cobia 277 Center Console, T/Yamaha F200	\$129,900
27' '19 Robalo R272, T/Yamaha F200, lift kept, trailer	Pending
24' '17 Robalo R247 DC, Yamaha F300	Pending
24' '18 Robalo R246 Cayman CC, Yamaha F300, trailer	SOLD
24' '18 Robalo 246 Cayman CC, Yamaha F300	Pending
22' '08 Century 2200 CC, Yamaha F200 OB, lift kept	\$41,900
20' '06 Edgewater 205 CC, F200 Yamaha, trailer	\$34,900
20' '16 Robalo R200, F150 Yamaha	SOLD
20' '18 Clearwater 2000 CC, Evinrude 150 E-Tec, trl	SOLD
20' '03 Sea Fox 205 DC	SOLD
19' '17 Yamaha 190 CC, High Output Jet, 70 hours	SOLD
18' '17 Robalo R180, t-top, Yamaha F115, trailer	SOLD
18' '16 Robalo R180, Yamaha F115, trailer	SOLD
16' '17 Robalo R160 Center Console, Yamaha F70	SOLD



**AUTHORIZED
PARTS &
SERVICE**

MERCURY
MerCruiser



YAMAHA
When you want the best

**VOLVO
PENTA**



**Full Service
Marina w/Slips &
Racks Available!**

Build Slots Available

Order Your boat for Spring Delivery!

OPEN 7 DAYS A WEEK



FOUR WINNS



KEY WEST



Scout
Discover More...



G3 Boats



**Need a Trailer?
We Have Them
In Stock!**

YAMAHA BUILT TO LAST

410.287.8280

ANCHOR
BOATS
North East, Maryland

www.AnchorBoat.com

448 MAULDIN AVE | NORTH EAST, MD 21901

Parts & Service
General Boat Repairs
High & Dry Boat Storage