

Free!



The Salty Dog®



CHESAPEAKE BAY EDITION

Published Every Other Week • Distributed in Maryland, Delaware, Southern Pennsylvania and Virginia

POWERBOATS & SAILBOATS ...Including Marine Services



**Largest Inventory of
In Stock Boats in the Region!**
302-945-2254
www.RudyMarine.com



**Largest Inventory of
In Stock Pontoons in the Region!**
302-945-2254
www.RudyMarine.com



27' 2017 GRADY WHITE 271 WHITE CANYON, Twin F-300 Yamaha, warr til 5/23, 249 hrs, guest batt charger, dockside AP, GPS, VHF, ORs, head, windlass, tri-axle galv, \$195,000, 302-226-3734 156596



19' 2001 CHAPARRAL SPORT SSI, clean condition, 240 hrs on engine 250 Volvo Penta engine, comes with Gator trailer, \$20,000, 443-856-8700, thyen1318@gmail.com 154701

**List Your Boat
As Low As \$59!**

Go to www.thesaltydog.com
to get started!

Private Boat Ads Only



32' 2006 TOPAZ EXPRESS, T/Cat C7 460hp, 2200 hours, 400 gallon fuel, 25 MPH, Furuno Navnet equip, new cushions & carpet, Onan 5kw gen, serious inquiries only, \$169,999, 732-547-5045, frostheatandair@aol.com 153914



20' 1983 CUSTOM BUILT MINI TUGBOAT, custom wood/F.B 20hp Diesel Yanmar, keel cooled dry stack exhaust, includes trailer, in water, JUST REDUCED! 10,999, 609-519-3583, harbortnj@yahoo.com 153457



25' 2000 BAHU CRUISER WAC Merc 350, anchor davit and windlass, new engine in 2012, new transom assembly \$15,000 732-977-4171 sagrimes102@gmail.com 157179



46' 2002 CARVER YACHTS 466 MOTOR YACHT new bimini, enclosure, bow thruster, 8D house engine batteries, season slip included at SHM in Beach Haven, NJ, \$259,900 973-479-1031 toddbrown@optonline.net 155439

Annapolis, MD • St. Michaels, MD
Deltaville, VA • Woodbridge, VA
Delaware City, DE

CONTACT US TODAY!
info@curtisstokes.net
410.919.4900

**CURTIS
STOKES**
& ASSOCIATES

www.curtisstokes.net

1-888-843-1585 • Private Boat Information on Page 17



410-784-7624

10551 Eldon Willing Rd
Chance, MD 21821

bobbykemp@scottscovemarina.com



TOHATSU



75HP

90HP

115HP

Upper Chesapeake Yacht Sales

John Curry • (610) 299-3598
www.upperchesapeakeyachtsales.com



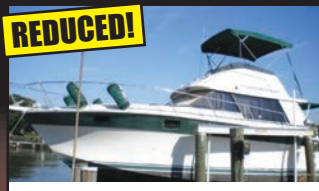
Custom center console sportfishing machine meticulously built in 2007 on a 1974 Bluefin Marine solid glass hull. Low hour continuous duty 300 HP Volvo diesel that burns 0.5 gal/mile at conservative 19 knot cruise. Full tower, hardtop with full enclosure, Rupp outriggers, dive and swim platform with ladder. A must see for the serious offshore fisherman or family looking for a special custom day boat. Major price reduction on this special boat which is ready to go for the 2022 season!



56' '70 Custom Featherstone CC Ketch • gen, AC, loaded, nice • **\$79,900**



41' '94 Gibson Houseboat, T/350hp V-Drives, gen, AC, **\$44,900**



34' '84 Silverton FB Convertible, T/270hp, gen, AC, very nice • **\$19,900**



34' '05 Rinker 342 Fiesta Vee T/300hp Mercs, new Bill, gen, AC, loaded & mint • **\$69,900**



33' '92 Sea Ray Sundancer T/5.7L Merc V-Drives, gen, AC **\$25,900**



29' '84 Dyer Soft Top Express • 200hp diesel, very nice • **\$64,900**

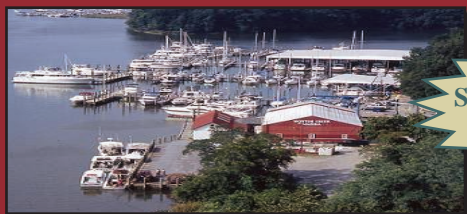


26' '07 Sea Ray Sundancer, 300hp Merc, genset, AC, mint **\$49,900**



26' '86 Pacemaker FB Cruiser New 350hp Merc, very nice **\$24,900**

34' '00 Formula 34 PC, T/300hp, gen, AC, very nice **\$49,900**
28' '74 Bertram FB, newer 315 Inboards, AC, clean **\$17,900**
26' '02 Bayliner 2655 Cierra, 5.0L, AC, nice **\$19,900**



Expect The Same Superior Service From Our Brokerage That You Get From Our Marina

BOAT SALES & BROKERAGE
• Financing & Insurance Available •

WORTON CREEK MARINA
 23145 Buck Neck Road • Chestertown, MD 21620
(410) 778-3282

SAILBOATS MOTORBOATS • YACHTS

Best and Fastest Access to the Bay

- Winterizing
- Shrink Wrapping
- Service & Repairs
- Cleaning • Sanding • Painting



- 100+ Wet Slips
- 70+ Rack Boatel
- 50+ Outdoor Racks
- Trailer Parking
- High Speed Wireless



4819 Woods Wharf Road
Shady Side, MD 20764

410.867.4800
parishcreeklanding.com

YEAR ROUND
**SLIPS • BOATEL
SERVICE**

GOLDSBOROUGH'S MARINE



"Where Happiness Is Just A Boat Ride Away"

www.crisfield.com/gold

END OF SUMMER SPECIALS!



LOWE
2001 Crestliner 14'
Tiller Jon Package
2018 Mercury
9.9 MH 4-stroke, 2022
Load Rite
galv trailer
\$5,495

GOLDSBOROUGH'S MARINE
CONSOLE SPECIAL



\$1,175



**END OF SUMMER
YAMAHA SALE**

2.5HP F2.5MHB \$999
9.9HP F9.9MHB \$2,695
50HP F50LB..... \$6,795
115HP VF115XA.....\$CALL
150HP VF150XA.....\$CALL



EZ Loader A96BS
16-18 2450 Galvanized
\$3,245



**Trailer
Blowout
Special!**



Load Rite
1,700lbs Galvanized
Bunk Trailer
\$2,695

Goldsborough's Marine

Ph.# 410-968-0852 • 709 W. Main St., Crisfield, Maryland • Email: merc71@verizon.net



IN STOCK NOW FOR IMMEDIATE PURCHASE

F250XB
F200XB
F200LB
VF175XA
F150XB
LF150XB
F150LB
VF150XB
~~VF150LB~~
F115XB
VF115LA
F115LB



F90LB
F70LA
F60LB
T60LB
~~T50LB~~
F40LA
F40LEHA
~~F25LWEC~~
F9.9SMHB
F6SHA
F4SHA
F2.5SMHB
~~F2.5LMHB~~

**AVAILABLE
MODELS**

**AVAILABLE
MODELS**

**RUDY MARINE IS RENOWNED FOR
EXPERT ENGINE RIGGING SERVICES**

VERY LIMITED QUANTITIES ON SOME MODELS



DEALER INQUIRIES WELCOME

32606 DUPONT BOULEVARD, DAGSBORO, DE 19939
ONLY MINUTES FROM THE CAPE MAY-LEWES FERRY

302-945-2254

DELAWARE HAS

NO SALES TAX!

SAVE when you Sell ... and when you Buy

boaters first™
yachtx.com

The trusted alternative to high cost brokerage and FSBO's hassles & risks, we make selling your boat easy, safe and produce better outcomes with professional advisors, Web transaction management, escrow and multi-platform marketing - all for just **1.5% or less**.

Ask about our buyer representation rebate
... and YachtX Rewards™ referral program.

boaters now saving thousands in selling costs with yachtx.com



boaters who received thousands in buyer rebates with yachtx.com



443.888.9190

"YachtX", "Boaters First", "YachtX Rewards" are trademarks of YachtX, Inc.



CAROLINA SKIFF

23 Ultra



SEA CHASER
By: Carolina Skiff, Inc.

24 HFC



Powered by:



DANNY'S MARINE
(410) 228-0234 • www.dannysmarine.com
Located on US Rt 50 (mile marker 86) • Chateau Drive near Linkwood, MD
dannysmarine@comcast.net

Limited Time Offers. Not all models qualify. See Participating Suzuki Marine dealer for details or visit www.suzukimarine.com
©2020 Suzuki Motor of America, Inc.

**Fishin' Boats From
Fishin' Folks**

FALL SAVINGS!



\$69,900

**2021 Key West Boats 219 FS -
Center Console, Yamaha Engine**



\$65,000

**2020 Key West Boats 219 FS -
Center Console, Yamaha Engine**



\$149,900

**2016 Cape Horn 27 CC - Yamaha
Engine, with trailer**



\$35,000

**1997 Sea Cat SL3 23FT CAT -
2015 Yamaha F115XB, with trailer**



\$39,990

**2019 Carolina Skiff 21 Sea Chaser
- Suzuki DF140A, with trailer**



\$89,995

**2000 HydraSports 2596CC /
2600CC Vector - 2016 Yamaha
F200XCA, with trailer**

**GOOTEE'S
MARINE**

South of Cambridge On Maryland's Eastern Shore
1439 Hooper's Island Road, Church Creek, Maryland

May-Craft
The Perfect Craft for Your Sport

G3

**KW
KEY WEST**

800-792-0082
Gootees.com



Worldwide Yacht Sales | Yacht Charters | New Yacht Construction



2017 37' Boston Whaler - \$350,000
Curtis Stokes - 410.919.4900



2004 32' Cruisers Yachts - \$59,900
Jason Hinsch - 410.507.1259



1994 31' Tiara Yachts - \$55,000
Curtis Stokes - 410.919.4900



2000 30' Pursuit - \$72,500
Chris Curlett - 305.522.1255



2016 27' Boston Whaler - \$145,000
David Robinson - 410.310.8855



1999 22' Shamrock - \$20,000
David Robinson - 410.310.8855



1996 22' Shamrock - \$17,500
David Robinson - 410.310.8855



1997 21' Wellcraft - \$12,000
Dan Tisoskey - 267.784.7229



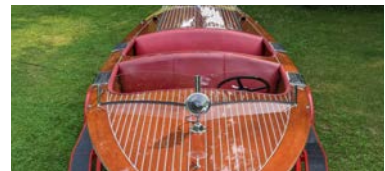
2011 20' Chaparral - \$25,900
Fletcher Bauman - 410.263.2000



2000 20' Cobalt - \$17,900
David Robinson - 410.310.8855



1998 18' Sea Ray - \$21,000
David Robinson - 410.310.8855



1937 17' Chris-Craft - \$95,000
Tristan Weiser - 609.420.0469

To see more details about these and all other yachts around the globe, please visit our website below.

Telephone: 410.919.4900 • Email: info@curtisstokes.net

www.curtisstokes.net

ALMARS

PLEASE CALL FOR UPDATES!
Motors Are Slowly Arriving!

*We Are A Full Service, Premier Mercury Outboard
Repair Center! Let Our Certified Mercury Technicians
Service Your Mercury Motor Needs!*

**CALL
NOW TO
ORDER
YOUR
4-STROKE!**



150
4-stroke
Black



150 ProXS
4-stroke
Black



175XL ProXS
4-stroke
Black



200
Sea Pro
Black



225XL
4-stroke
Black



250 XL
4-stroke
White

NOW IN STOCK!

SEVERAL SMALL MOTORS 2.5HP - 150HP!

Call for Configuration & Compatibility!



**2.5HP
3.5HP
4HP
5HP**

**6HP
8HP
9.9HP
15HP**

**20HP
25HP
50HP
60HP**

**75HP
115HP
150HP**



THESE WILL GO FAST!

**100's of Used Cowllings
In Stock!
Call for Availability!**

We Now Offer
INJECTOR SERVICE
with ONE Day Turnaround

REMANUFACTURED OUTBOARD ENGINE SALE!

90hp - 250hp 1 Full Year Warranty

Starting As Low As \$5,995 Call for Details!

**CALL US
FOR GREAT
DEALS ON
NON-CURRENT
POWERHEADS!**

Call us for current pricing new current
and noncurrent outboards
NO SALES TAX IN DELAWARE!

701 Washington St., New Castle, DE

302-328-8541

www.almarsoutboards.net

HOURS: Monday - Friday: 8am - 5pm

CALL FOR GREAT PRICING ON NEW
& USED MERCURY OUTBOARDS

NO HIDDEN COSTS

NOT RESPONSIBLE FOR TYPOGRAPHICAL ERRORS

All prices good
while supplies last!



Pricing includes all rebates.

CLARKS LANDING

YACHT SALES

NEW LISTING



2021 38' Regal
Grande Coupe
\$599,000



SOLD

2021 27' Sea
Hunt Gamfish
\$159,900



SOLD

2016 Ocean
Yachts Billfish
\$599,000



SOLD

2017 37'
Monterey
\$292,000

**WE SPEED UP THE SALE BY
TAKING A TRADE ON YOUR
BOAT. CONTACT CLARKS FOR
A HASSLE-FREE EXPERIENCE.**

I was extremely impressed with the professionalism of the Clarks Landing NJ sales team. I was able to find the boat I was looking for and at a great deal! Even after the closing of my new boat, I was happy to have the staff at Clarks Landing list my other boat. They sold my boat in one week! I will only use Clarks Landing for any future boat sales or purchases.

- David, Clarks Landing Yacht Sales Customer

WANT TO SELL YOUR BOAT FAST



A successful brokerage program starts with exposure. Due to our size, Clarks Landing can offer more exposure than most other brokers.

Our experienced, dedicated team handles the entire transaction, **including financing, marketing,** demonstration rides, haul outs, estimates & more.

List your boat where it is or at one of our facilities.

- ✓ Free Land Storage Program
- ✓ Reduced Commissions
- ✓ Huge Marketing Budget
- ✓ Family-Owned over 40 Years
- ✓ Significant Presence at Major & Local Boat Shows
- ✓ **Free Drone Media Package for Listings over \$75K**
Locations in NJ & MD

DISCOVER THE
CLARKS LANDING
DIFFERENCE

Get A Free Market Analysis

www.ClarksLanding.com

ANNAPOLIS AREA

1442 Ford Road • Shady Side, MD 20764

103 Shopping Center Road • Stevensville, MD 21666

(410) 867-9550

boatinfo.md@clarkslanding.com

JERSEY SHORE

847 Arnold Avenue, Point Pleasant, NJ 08742

(732) 899-5559

boatinfo.nj@clarkslanding.com

www.ClarksLanding.com



**MIDLANTIC
MARINE
CENTER**
302-436-BOAT (2628)

*Closed Sunday & Monday
Tuesday-Friday 8AM-4:30PM
Saturday 8AM-4PM*

*36624 DuPont Boulevard Selbyville, DE
www.midlanticmarinecenter.com*

FISHING BOAT SPECIAL!

NEW AND PRE-OWNED FISHING BOATS IN STOCK NOW!



PRE-OWNED

2019 Starweld 16 Fusion SC Pro
Mercury 90hp 4-stroke, trailer
Only \$22,595



2022 Starcraft Patriot 16TL
Yamaha F25 4-stroke tiller, trailer
MSRP \$18,692
Model Year Clearance Only \$14,998



2023 Starcraft Patriot 16 DLX SC
Yamaha F40 4-Stroke, trailer
MSRP \$26,383 • Call for Price!



2022 Starcraft Stealth 166SC
Yamaha F70LA 4-stroke, trailer
MSRP \$34,407
Model year clearance, Only \$28,902



2023 Starcraft Stealth 166DC
Mercury 60hp 4-stroke CT, with trailer
MSRP \$34,290 • Call for Price!



**FACTORY ORDER
AVAILABLE SPRING 2023**

2023 Starcraft Strom 166SC
Mercury 60hp 4-stroke, trailer
MSRP \$37,120 - Call for Price!

New
STARCRAFT & Wellcraft®
Inventory Arriving Weekly!



A man in a red life vest and sunglasses is giving a thumbs up from a red boat. The background shows a blue sky and a body of water with another boat in the distance.

BETTER SAFE THAN SORRY

When things go south on the water, it can happen in a flash so make sure you have towing from TowBoatUS. It's the biggest and best towing service around, with 600+ boats on the water, the red boats are on your waterways and ready to help at a moments notice.

**Getting You Back Safely is Our #1 Goal –
GET UNLIMITED TOWING TODAY!**

BoatUS.com/Towing
800-395-2628



Details of services provided can be found online at BoatUS.com/Agree. TowBoatUS is not a rescue service. In an emergency situation, you must contact the Coast Guard or a government agency immediately.

WINTER STORAGE COVERS

Light Weight Industrial Strength Material

MORE ECONOMICAL THAN "SHRINK WRAP"/LIGHTER AND LESS EXPENSIVE THAN CANVAS/BETTER FITTING THAN A TARP

So light and easy to put on, it requires no more than two people to cover your "investment" • 1 Year Warranty for Fit and Workmanship

No More Breaking Your Back Or The Bank!

www.hffisherandsons.com

H.F. FISHER & SONS, INC.

875 Industrial Highway Unit 8 • Cinnaminson, NJ 08077

Since 1954

Call Us Now...or Call Your Shrinkwrap Guy Again and Again and Again

1-800-624-2868 • 1-856-461-2883

or text Frank at 856-220-3588

MARINE TECHNICIAN TRAINING

RIDE THE CREST
to career success



ENROLL FOR TRAINING TO BECOME A PROFESSIONAL MARINE SERVICE TECHNICIAN

Our in-depth program includes training in: Seamanship, AC & DC Electrical, ABYC Standards, Air Conditioning & Refrigeration, Mechanical Systems, Stern Drives/Transmissions, Computerized-Fuel Injected Inboard and Outboard Engines, Inboard, Outboard and I/O Systems, Electronic Diesel Engines (Cummins QSB 5.9 380 HP Common Rail Trainer), Fiberglass & Gelcoat Repair, Plumbing and Sanitation Systems.

Financial Aid for those who Qualify • Career Placement Assistance



CALL NOW

866-905-4278

www.autotraining.edu

900 Johnsville Blvd., Warminster, PA 18974

Supported by



with Training Materials & Equipment

For required program disclosure information, please go to www.autotraining.edu/consumerinformation.

ANNAPOLIS CRUISAIR, INC.

Family Owned & Operated for Over 50 Years

SALES • SERVICE • INSTALLATION



U-LINE
U-Line Ice makers
110/115vAC

We will meet or beat
any competitive
price quote for
these products!

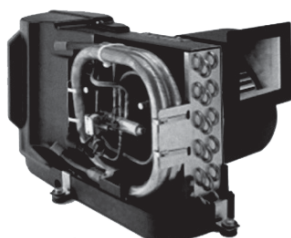


Marine Diesel
Heaters

Espar

Cruisair®

New Turbo
Air Conditioners • Heat Pumps



• We Have • BREATHE EASY AIR FILTERS

Sentry™
Cruisair

BATTERY
CHARGERS



SAFEST
CHARGER
ON THE
MARKET!

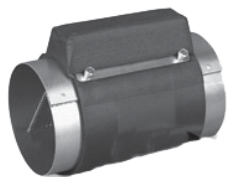
**Eskimo Ice
600 Ice Pump**

Provides up to 600 lbs. of fresh
ice in a day from your ships
water tank.



STINKY BOAT?

We Have **NEW**
Breathe Easy
Air Purifiers



➔ **DOMETIC**

SPOTZERO®
Fresh Water Reverse Osmosis

Water Purification Systems



Vitrifrigo
REFRIGERATORS

WAECO
Adler/Barbour®



MARINE AIR SYSTEMS®
AIRRRRRRRRR
by Dometic GROUP



KOHLER.


- Generators -



Fischer Panda

Onan

2124 Renard Ct. • Annapolis, MD
(410) 224-0970 • (410) 974-6136 • Fax (410) 224-0050
www.annapoliscruisair.com



**YOUR
ENJOYMENT
MADE EASY**

GEICO[®]
FOR YOUR BOAT

Get a GEICO quote for your boat and, in just 15 minutes, you'll know how much you could be saving. If you like what you hear, you can buy your policy right on the spot. Then let us do the rest while you enjoy your free time with peace of mind.

geico.com/boat | 1-800-865-4846

Some discounts, coverages, payment plans, and features are not available in all states, in all GEICO companies, or in all situations. Boat and PWC coverages are underwritten by GEICO Marine Insurance Company. In the state of CA, program provided through Boat Association Insurance Services, license #0H87086. GEICO is a registered service mark of Government Employees Insurance Company, Washington, DC 20076; a Berkshire Hathaway Inc. subsidiary. © 2020 GEICO 20_206641

ADVERTISERS INDEX

ALMARS.....	9	GOOTEE'S MARINE.....	7
ANCHOR BOATS.....	24	HF FISHER AND SONS.....	13
ANNAPOLIS CRUISAR, INC.....	14	J.J. BEST BANC & CO.....	21
ATC AUTO/MARINE TRAINING.....	13	LIST YOUR BOAT.....	17
BOAT LIFTS UNLIMITED.....	16	MIDLANTIC MARINE CENTER.....	11
BOAT US.....	12	PARISH CREEK LANDING.....	4
CLARKS LANDING.....	10	RUDY MARINE.....	5
CURTIS STOKES.....	8, 22	SCOTT'S COVE MARIA.....	2
DANNY'S MARINE.....	7	UPPER CHESAPEAKE YACHT SALES..	3
GEICO.....	15	UTSCH'S YACHT SALES.....	20
GOLDSBOROUGH'S MARINE.....	4	WATERFRONT.....	23
GOOD AUTOMATIC WINDLASS.....	20	YACHTX.....	6

THE LARGEST LOW PROFILE BOAT LIFT MANUFACTURER IN THE USA

**CALL
US FOR
YOUR LOCAL
DEALER!**



Choose The Right Boat Lift, Choose

MAGNUM

BOAT LIFTS

Personal Watercraft Lifts

- Low Profile Design • Low Maintenance • 2/5 Yr Warr.
- Outside Walkway • Galvanized Steel Construction
- Aluminum Cradles Available • Capacity 800-40,000 lbs. www.magnumlift.com

Fully
Insured

BOAT LIFTS UNLIMITED

410-674-3100 • 1-800-268-5911

**WE SERVICE
MOST MAKES
OF BOAT
LIFTS!**

Located in Odenton, MD, this full-service boat lift manufacturer has a network of over 180 distributors serving the Chesapeake Bay, Great Lakes and Atlantic Coast with Magnum Boat Lifting Products. Boat Lifts Unlimited is dedicated to customer satisfaction through prompt, courteous service on most existing boat lifts and timely installation of new boat lifts. Quality materials, attention to detail and innovative design have made Boat Lifts Unlimited one of the largest boat lift manufacturers in the U.S.

FREE LISTING WITH PHOTO ON THE INTERNET

PRIVATE AD RATES

- ☐ INTERNET ONLY UP TO 1 YEAR..... \$49⁰⁰
☐ 3 ISSUES NO PHOTO CLASSIFIED..... \$59⁰⁰
☐ 3 ISSUES WITH COLOR PHOTO
 WITH COLOR PHOTO ON INTERNET..... \$69⁰⁰
☐ INTERNET FEATURE ADD ON 4 WEEKS
AVAILABLE WITH AD PURCHASE ONLY!
 ON THE SALTY DOG HOME PAGE..... \$49⁰⁰
☐ FRONT COVER..... \$40⁰⁰
☐ FACEBOOK FEATURE..... \$15⁰⁰
☐ PUBLICATION MAILED TO YOU..... \$2⁰⁰

TOTAL

FRONT COVERS ARE BASED ON AVAILABILITY

- ☐ CHECK ☐ MONEY ORDER ☐ DISCOVER
☐ MASTERCARD ☐ VISA ☐ AMERICAN EXPRESS

CC#

Expiration Date _____ Security Code _____

Advertiser's Name

Address

Phone

Where did you pickup "The Salty Dog"?

Store _____ Town _____

Fill out the description form below, **up to 125 characters (including spaces & punctuation) of advertising**. Please put one character per space beginning with the motor. Include a check, money order or credit card, and mail to us with a good quality COLOR photograph of your boat. Photos will only be returned if accompanied by a self-addressed stamped envelope.

AD COPY

FT. _____ YR. _____

MANUF. / MODEL _____

MOTOR _____

ACCESSORIES _____

LOCATION OF BOAT _____, _____ State _____ Zip Code _____

PRICE _____

PHONE # _____

EMAIL _____

Send to: The Salty Dog
254 Brick Blvd • Suite 1
Brick, NJ 08723

888-843-1585

Fax (732) 477-9000 • Email: info@thesaltydog.com

No refunds after Ad is processed. • Advertiser will be responsible for \$20 fee on returned checks.

YOUR BOAT LISTING CAN ALSO BE SUBMITTED ON THE INTERNET www.thesaltydog.com

SPECIAL FEATURES

PRIVATE BOAT ADS .. Pgs. 18-20

SUBSCRIPTION CHESAPEAKE BAY

SALTY DOG is published Bi-weekly 25 times a year.

Papers are mailed **FIRST CLASS**. Your first issue will be mailed within 1 week.

To subscribe, just fill in the amount of issues and multiply by \$2.00*

No. of issues _____ x \$2.00* = Total Cost _____

☐ CHECK ☐ MONEY ORDER ☐ MASTERCARD ☐ VISA

Credit Card No. _____

Exp. Date _____

Signature _____

Name _____

Address _____

City _____ State _____ Zip _____

Telephone _____

*Canada Subscription Add 10% - Bermuda Subscription Add 30%
 Outside the Continental USA Add 50% • Credit Cards Only Outside USA



Mail To: THE SALTY DOG, 254 Brick Blvd • Suite 1, Brick, NJ 08723



A Bi-weekly Publication for
 Powerboats, Sailboats, Marine
 Equipment, Supplies, Services,
 Waterfront and Photo Ads

For More Info on Display Ads or Internet Listings

Call 888-843-1585 • Fax (732) 477-9000

info@thesaltydog.com • Mon.- Fri. 9:00 am to 4:00 pm

See Color Photo on the Internet



38' 2004 CIGARETTE TOP GUN TWIN STEP, T/525 EFI, Bravo XR drives, 600 hours, 125 hours since rebuilds, **OFFERS CONSIDERED! \$139,900, 609-693-9423 tidesendmarina1@gmail.com 156293**

See Color Photo on the Internet



30' 2014 SEA HUNT 30 GAMEFISH
T/300hp Yamahas, 490 hours
\$149,500, 908-489-5098

154798

See Color Photo on the Internet



28' 2006 MAKO 282
only 130 hours, \$20K in upgrades in 2021
908-489-5098

154795

See Color Photo on the Internet



32' 2019 WORLD CAT 325 DC, T/Yamaha 300hp 4-stroke, approx 237 hrs, Garmin, Optimus 360, Sea Station & SeaWays autopilot, 6 person Viking life raft, Panda-Fisher dsl gen, **\$379,000, 732-899-8010 sales@schraderyachts.com 157371**

See Color Photo on the Internet



29' 2017 CRUISERS 298 SS
Mercruiser Big Block, low hours, clean,
\$79,900, 631-327-0843 stoneharboryachts@gmail.com 157369

See Color Photo on the Internet



27' 2017 GRADY-WHITE 271 WHITE CANYON,
Twin F-300 Yamaha, warr til 5/23, 249 hrs, guest batt charger, dockside AP, GPS, VHF, ORs, head, windlass, tri-axle galv, **\$190,000, 302-226-3734 156596**

See Color Photo on the Internet



32' 2020 CAPE HORN 32XS
175 hours
\$259,500, 908-489-5098

154799

See Color Photo on the Internet



29' 2005 SEASWIRL 2901
Yamaha 4-strokes, only 480 hours
\$77,900, 908-489-5098

154796

See Color Photo on the Internet



27' 1992 BOSTON WHALER 27 OFFSHORE, New T/Honda 225hp ('13), new fuel tanks ('13), 580 engine hours, 270 gal fuel, offshore elects, ready to fish, **\$59,900, 917-817-5084 info@deepwaterlanding.com 156325**

See Color Photo on the Internet



32' 2004 WELLCRAFT 32 CCF, 2014 Mercury Verado 300, 770 Hours approx., No Bottom paint, New Aquadeck, **\$75,000, 908-963-3429 anthony.fratesi762@gmail.com 157217**

See Color Photo on the Internet



29' 2007 REGULATOR 29FS
repowered 2011 Yamaha 300s, 987 hours, super clean
908-489-5098

154797

See Color Photo on the Internet



27' 1978 SEASTAR SOFT TOP, 330hp Vortec, new top & back drop canvases, new inside cushions, DF, VHF, GPS, like new condition, same owner 48 hrs, beautiful boat, **\$9,500, 410-409-7857 157174**

See Color Photo on the Internet



31' 2017 CHAPARRAL 310 SIGNATURE, T/Mercruisers, 125 hours, gen, Joystick, thrusters, electronics, loaded, better than new, **\$239,900 OBO, 917-817-5084 info@deepwaterlanding.com 156294**

See Color Photo on the Internet



28' 2005 GRADY-WHITE 282
Yamaha 4-stroke
\$69,500, 908-489-5098

154794

See Color Photo on the Internet



26' 2000 GRADY-WHITE 265
Yamaha 4-strokes, only 380 hours
\$69,500, 908-489-5098

154793

See Color Photo on the Internet



31' 1982 BERTRAM 31, Cummins 6BTA 270hp Diamond Series, custom hardtop w/rocket launcher, Rupp double spreader ORs & rigged Eisenglass wraparound, elects, **\$129,000, 732-899-8010 sales@schraderyachts.com 155559**

See Color Photo on the Internet



28' 1990 SEA RAY 280 Sundancer, Twin Mercury V-6, VHF, Garmin GPS, DF, Fridge, Microwave, FW tank, 120 Gal fuel, Full Canvas, Clean and Dry Cabin, Marina Maintained, **\$17,900, 908-309-4016 almarina1@gmail.com 154766**

See Color Photo on the Internet



26' 2012 CROWNLINE CR 260, Mercruiser MAG 350, Well maint'd cabin cruiser. Top of the line amenities. Exc cond. AC, 2 berths, head w/ pump out, kitchen, GPS, new batts. 11/21 survey upon request., **\$67,900, 302-559-0950 cjgrady16@gmail.com 157386**

See Color Photo on the Internet

**Steiger 25DV Miami**

25' 2020 STEIGER CRAFT 25DV MIAMI
150 hours mint
\$149,500, 908-489-5098

154790

See Color Photo on the Internet

**Grady Dolphin 251**

25' 1994 GRADY-WHITE 251 DOLPHIN
clean
\$19,500, 908-489-5098

154791

See Color Photo on the Internet



24' 2004 CHAPARRAL SIGNATURE, 5.0L Volvo Penta, 360 hours, FF, GPS, well cared for & it shows, in water for test drive, \$24,000, 609-287-2283 bhow127@aol.com 156446

See Color Photo on the Internet



25' 2019 SPORTSMAN 252 OPEN, Yamaha F300 UCA, 12" Garmin MFD w/radar, outriggers, windlass, livewell, underwater lights, \$118,900, 732-899-8010 sales@schraderyachts.com 154578

See Color Photo on the Internet

**25' 2000 BAHU CRUISER**

Walk Around Cuddy,
Merc 350, anchor Davit and windlass,
New engine in 2012,
New Transom assembly,
\$15,000
732-977-4171
sagrimes102@gmail.com

157179

See Color Photo on the Internet



24' 1998 SHAMROCK 246 CC, 350 Chevy, Recent Repower, new furuno FF, 1KW transducer, dual axle trailer, boat in water and ready to fish, Runs well, \$14,900, 732-551-4908 tomholowchuk@gmail.com 156424

See Color Photo on the Internet



25' 2012 CHRIS CRAFT LAUNCH 25 HERITAGE EDITION
Mercruiser 8.2L, 460 hours
\$110,000, 732-899-8010 sales@schraderyachts.com 154835

See Color Photo on the Internet



23' 2020 GRADY-WHITE 236 FISHERMAN
Yamaha 300, only 50 hours
\$149,500, 908-489-5098

154789

See Color Photo on the Internet



25' 2008 CHRIS CRAFT LAUNCH 25 HERITAGE EDITION,
Merc 496 FWC Seacore V8, Bill, new covers, new Garmin GPS/DF, \$64,900, 732-899-8010 sales@schraderyachts.com 156292

See Color Photo on the Internet



24' 2007 PRO-LINE Center Console, 250 HP Mercury OB, livewell, GPS/radar, stereo, outriggers, custom enclosure, covers, stereo, new upholstery, professionally maintained, low hrs, \$30,000, 908-510-7468 ryan@arshelps.com 156423

See Color Photo on the Internet



23' 2018 RANGER TUG, F200 Yamaha, 42 hrs, cabin, galley, sleeping quarters, bow thruster, AC, Garmin, \$115,000, 732-899-8010 sales@schraderyachts.com 157370

See Color Photo on the Internet



25' 2012 PARKER 25 SE, 300hp Yamaha, 465 hrs, marina maint'd since new, marine head in console Garmin GPS/radar, ready to fish, \$59,900, 917-817-5084 info@deepwaterlanding.com 157368

See Color Photo on the Internet



24' 1997 PURSUIT 2470 WALKAROUND, T/Yamaha 130hp OBs, rebuilt powerheads, new water pumps & thermostats, new Garmin VHF, stereo w/ wireless remote, all new LED lighting, new batts, new enclosure, \$29,900, 732-899-8010 sales@schraderyachts.com 156845

See Color Photo on the Internet



23' 2018 KEY WEST 239FS
2018 Yamaha FD250XCA, 51 hours
\$79,595, 848-232-4292 sales@allpointsmarineservices.com 155492

See Color Photo on the Internet



25' 2008 CHAPARRAL 256 SSI, Volvo I/O, new transom assembly, 165 original hours, ready to go! MAKE OFFER!, \$35,900, 917-817-5084 info@deepwaterlanding.com 155615

See Color Photo on the Internet



24' 2004 SHAMROCK 246 WA, Mercruiser FWC 350 MPI Horizon IB, 1545 hrs, newer Garmin elects, loaded, well maint'd & ready to fish, \$24,900, 917-817-5084 info@deepwaterlanding.com 156841

See Color Photo on the Internet



23' 2019 STINGRAY 234LR, Yamaha F200, ski tower, tow bar, livewell, boat cover, \$59,900, 732-899-8010 sales@schraderyachts.com 156291

See Color Photo on the Internet



23' 2008 SUGAR SAND OASIS AIRWAVE, 250hp Opti Jet Drive, tower, bimini, snap in carpet, table, full cover, new wiring & SS impeller (21), 280 hrs, \$15,995, 908-309-4016 almmarine1@gmail.com 156290

See Color Photo on the Internet



22' 2001 CENTURY DUAL CONSOLE, 200hp Yamaha SWS, bimini, new Garmin, new canvas, new cushion upholstery, bottom paint, Bluetooth stereo, trailer, \$16,900, 732-948-6003 jshank925@gmail.com 154952

See Color Photo on the Internet



2016 SEA DOO GTX 155 PAIR, 27 hours/36 hours, one owner, prof maint'd, covers, light use, lift available for sale!, \$19,500, 917-817-5084 info@deepwaterlanding.com 156843

See Color Photo on the Internet



22' 2016 BOSTON WHALER 220 OUTRAGE VERY RARE, T/150hp Mercury Verados, 157 hrs, dual Raymarine screens, loaded, head, t-top, good elects, trailer, one owner, \$112,900, 917-817-5084 info@deepwaterlanding.com 156842

See Color Photo on the Internet



21' 1990 CHRIS CRAFT 213 CC, Evinrude 200hp, bimini top, safety gear, Shoreline trailer, \$7,800, 443-553-3228 157175

See Color Photo on the Internet



22' 2015 BENNINGTON SX22, (saltwater Performance Package) w/ NEW 2022 Yamaha Vmax 115hp (5hrs) Excellent Condition, \$39,900 OBO, 410-409-2697 jld5960@msn.com 156814

See Color Photo on the Internet



16' 2016 Crestliner 1650 DISCOVERY, side console, Mercury 50hp, 3 batteries, full cover, FF, trolling motor, 37 hours, like new, \$15,900, 908-309-4016 almmarine1@gmail.com 154951

Get it Up®

and down automatically with a
Good® Automatic Windlass

Automatic Free-Drop
Rope/Chain Anchoring Systems

800-780-4655

Sales, Installation, & Service
Barnegat, NJ

www.goodwindlass.com

UTSCH'S YACHT SALES

BETWEEN CANAL AND SCHELLENGER'S LANDING

Rt. 109 & Cape May Canal, Cape May, NJ (609) 884-BOAT (2628)

LICENSED

www.capemayharbor.com

INSURED



35' 1975 Gulfstar Trawler,
T/DsIs • \$9,900



35' 2000 Henriques Express,
T/Yanmar DsIs, tower, elects • \$125,000



32' 1993 Carver,
\$7,500



31' 1989 Chris Craft Commander,
T/Crusader V8 454 • \$24,900



28' 1998 Albin,
Cummins Diesels, \$78,800



28' 2002 Bayliner 2855 Ciera, 350hp
Merc I/O, in water, ready to go • \$14,900



28' 1995 Bayliner Cruiser,
V8 Mercruiser I/O, \$7,900



28' 1988 Carver,
TV6 Mercruisers, sleeps 4-6, \$7,900

34' 1981 Silverton FB Conv, T/Crusader V8 gas.....	SOLD	28' 2005 Pursuit Walkaround, T/Yamaha 225hp OBs, very clean	SOLD
33' 1994 Carver, T/Crusader V8 gas	\$30,000	25' 1973 Bristol Sloop, 9.9hp outboard	\$1,500
32' 2006 Rinker, T/V8	SOLD	17' 2002 Aquatron, Merc I/O, trailer	\$6,500
30' 1985 Century 300 Grande, T/V8 gas inboard	Reduced \$3,500	15' Custom Wood Skiff, nice condition.....	\$750
29' 2001 Seamaster Classic, 250hp Mercruiser I/O	\$6,000		
29' 1982 Aquasport, T/PCM V8 gas, 330hp each, elects ...	Reduced \$11,900		
28' 2002 Bayliner 2855 Ciera, 350hp Merc I/O.....	\$7,900		
28' 1976 Luhrs Flybridge Sedan, Crusader V8.....	\$1,500		
28' 1974 Bertram, T/V8	SOLD		

- MISC EQUIPMENT -

Approximately 60 lineal feet of 10' wide concrete,
Bellingham Marine Floating Docks, very heavy construction .. \$4,000
1950 Hydraulic Cutterhead Dredge, 471 Detroit Diesel, 6' pump. \$29,000



Apply for a Low Rate Boat Loan Today

100% Financing Available, Quick Approvals, Low Rates,
Long Term Programs & NO Prepayment Penalties.

**Get Pre-Approved NOW at
JJBESTBOATLOANS.COM
OR CALL 1-800-USA-1965.**

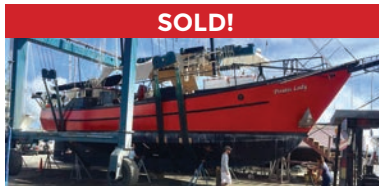


Scan Me!

Estimated APR based on 5 year loan term; individual rate may vary based on loan amount, loan term, boat use, model year and type of boat. Subject to consumer loan program requirements and credit approval. Rates and terms are subject to change based on market conditions and borrower eligibility. Certain fees, closing costs, and restrictions may apply. APR applied to the loan is the APR in effect on the date your application is received and is valid for 30 days. Minimum loan amount for pleasure use is \$10,000 in all states. J.J. Best Banc & Company operates under the name J.J. Best & Company. v



Worldwide Yacht Sales | Yacht Charters | New Yacht Construction



SOLD!

72' Trade Rover



SOLD!

50' Chris-Craft



SOLD!

48' Evans Boats



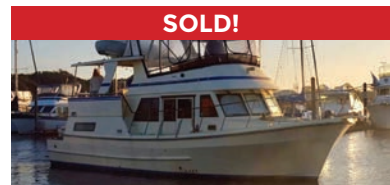
SOLD!

44' DeFever



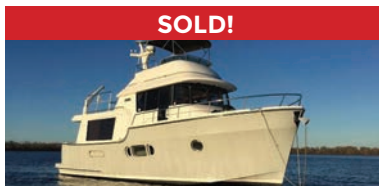
SOLD!

44' Gulfstar



SOLD!

42' Fu Hwa



SOLD!

40' Fathom



SOLD!

40' Hinckley



SOLD!

36' C&C



SOLD!

36' Bristol



SOLD!

32' Eagle



SOLD!

26' Sisu

List your boat with us and join our **SOLD** list!

To see more details about these and all other yachts around the globe, please visit our website below.

Annapolis, MD • St. Michaels, MD • Delaware City, DE • Deltaville, VA • Woodbridge, VA
Telephone: 410.919.4900 • Email: info@curtisstokes.net

www.curtisstokes.net



WATERFRONT MARINE

#1 GOLL AVE, SOMERS POINT, NJ ~ 609-926-1700

281 PRINCETON AVE, BRICK, NJ ~ "Featuring Chaparral & Carver" 732-202-6961

2822 SOLOMON'S ISLAND RD, EDGEWATER, MD ~ 443-949-9041

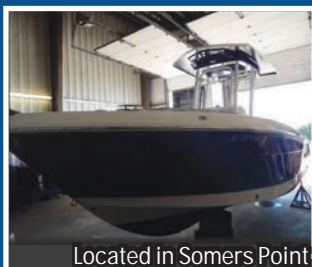
Premium Brands ~ Exceptional Service

WWW.WATERFRONTMARINE.COM

INBOUND BOATS AVAILABLE FOR FAST DELIVERY • CALL TODAY FOR DETAILS!



- PREOWNED BOATS -



Located in Somers Point

2021 Robalo R242 Explorer
Yamaha F300UCA, 45 hrs,
\$105,000



Located in Somers Point

2010 Robalo R227 DC
Yamaha F250,
indoor rack stored • **\$48,900**



Located in Somers Point

2021 Bennington 25 QXFBWA
Tri-toon • Yamaha VF250
\$159,900

2022 Contender 44 ST



Factory Demo!

Triple Yamaha 425 XTO's, electronics,
Sea Keeper, loaded w/options &
features, new warranties,
Available for Immediate Delivery!
Call Today for Pricing!

BOWRIDERS & PONTOONS

30' '16 Chaparral 307 SSX, T/Volvo 300hp I/O	\$189,000	20' '17 Regal 2000 ES Bowrider, Volvo Penta, 40 hours	\$36,500
30' '14 Chaparral 307 SSX, T/Volvo Penta 300DP, joystick	\$139,900	FISHING BOATS	
29' '19 Chaparral 297 SSX BR, Volvo Penta 380 DP	\$139,900	36' '22 Robalo R360 CC, Triple Yamaha F300, lift kept	\$597,000
28' '20 Chaparral 280 OSX, T/Yamaha F200, 110 hrs	\$179,000	27' '18 Cape Horn Offshore CC, T/Yamaha F200 OBs, 147 hrs	\$199,000
26' '22 Monterey M65 BR, Mercruiser 300 BIII, only 165 hrs	\$109,900	26' '16 Sea Fox 266 Commander CC, T/Yamaha F150s	\$99,900
26' '19 Chaparral 264 Sunesta, Volvo Penta 350 DP	\$99,900	26' '13 Scout 262 Abaco, WAC, T/Yamaha F150	\$129,900
26' '14 Chaparral 264 Sunesta, Volvo Penta 320DP, 62 hrs	\$69,900	24' '19 Robalo R247, Yamaha F300	\$199,500
26' '17 Crownline E6 XS Bowrider, Yamaha F300	Pending	24' '07 Edgewater 245 CC, T/Yamaha F150	\$44,900
25' '21 Bennington 25QXFBWA, Yamaha F250	\$159,900	24' '21 Robalo R242 Explorer, Yamaha 300hp	\$105,000
25' '16 Chaparral 250 Suncoast, Yamaha F300, lift kept	\$72,500	22' '16 Robalo R222 CC, repowered Yamaha VF250, 40 hrs, trl	\$59,997
24' '14 Yamaha 242 Limited Jet Boat	\$44,900	22' '10 Robalo R227 DC, Yamah F250, indoor rack stored	\$48,900
24' '19 Chaparral 244 Sunesta, Volvo Penta 300 DP	\$69,900	22' '15 Robalo R222, Yamaha F200, trailer	\$57,800
24' '18 Chaparral 246 SSI, 300hp Volvo FWC V8, 197 hrs	\$65,000	22' '21 Robalo R227 DC, Yamaha F200	\$66,900
23' '18 Bennington 23 SPDXPDI, Yamaha F175	\$64,900	20' '18 Robalo R207 DC, Yamaha F150	\$49,900
23' '21 Bennington 21 LSB Tri-Toon, Yamaha F150	\$59,900	18' '22 Robalo R180 CC, Yamaha F-150, no bottom paint	\$59,900
23' '21 Chaparral 23 SSI OB, Yamaha F200, trailer	Pending	18' '06 McKee Craft 184 CC, Yamaha F115 motor	\$14,900
23' '08 Cobalt 232 Bowrider, Volvo Penta 300 320DP, trl	\$34,900	18' '17 Robalo R180, Yamaha F115, t-top, trailer	Pending
21' '21 Chaparral 21 SSI OB, Yamaha F150, trailer	\$57,900	CRUISERS & CUDDY CABINS	
21' '20 Chaparral 21 SSI OB, Y amaha F150	\$49,900	33' '12 Chaparral 330 Signiture, T/350hp Mags	SOLD
21' '19 Chaparral OB 21 H20 Sport, Yamaha F150	\$49,900	22' '01 Sea Ray 225 Weekender, 300hp Merc I/O, BIII	\$21,800
21' '16 Chaparral 21 Fish & Ski, trailer	\$44,900		



**AUTHORIZED
PARTS &
SERVICE**

MERCURY
MerCruiser



YAMAHA
When you want the best

**VOLVO
PENTA**



**Full Service
Marina w/Slips &
Racks Available!**

NOW IS THE TIME TO BUY!

OPEN 7 DAYS A WEEK



FOUR WINNS



KW
KEY WEST



Scout
Discover More...



**Great Selection of
Pontoons In Stock!
Call for Info!**



G3 Boats



**Need a Trailer?
We Have Them
In Stock!**

YAMAHA BUILT TO LAST

410.287.8280

ANCHOR
BOATS
North East, Maryland

www.AnchorBoat.com

448 MAULDIN AVE | NORTH EAST, MD 21901

Parts & Service
General Boat Repairs
High & Dry Boat Storage