

Free!



The



CHESAPEAKE BAY EDITION

Published Every Other Week • Distributed in Maryland, Delaware, Southern Pennsylvania and Virginia



POWERBOATS & SAILBOATS ...Including Marine Services



JEANNEAU
12.5 Leader

**Largest Inventory of
In Stock Boats in the Region!**
302-945-2254
www.RudyMarine.com



Bentley
Elite

**Largest Inventory of
In Stock Pontoons in the Region!**
302-945-2254
www.RudyMarine.com




JEANNEAU
1095 Fly

**Largest Inventory of
In Stock Boats in the Region!**
302-945-2254
www.RudyMarine.com



30' 2004 PROLINE SPORT, T/Merc 225hp, new Raymarine
elecs, radar, AP, FF, cuddy in CC, AC/HT, 300 gal fuel, under-
water lights, shore power, new canvas, TV, new upholstery,
550 hrs on engines, very clean, \$60,000, 201-725-0621,
rickcuttingedgeconstruction@gmail.com 155380



27' 2017 GRADY WHITE 271 WHITE CANYON, Twin
F-300 Yamaha, warr til 5/23, 249 hrs, guest batt charger,
dockside AP, GPS, VHF, ORs, head, windlass, tri-axle
galv, \$195,000, 302-226-3734 156596



**Seasons
Greetings**
From The
Salty Dog Staff

Annapolis, MD • St. Michaels, MD
Deltaville, VA • Woodbridge, VA
Delaware City, DE

CONTACT US TODAY!

info@curtisstokes.net
410.919.4900

**CURTIS
STOKES**
& ASSOCIATES

www.curtisstokes.net

www.thesaltydog.com • 1-888-843-1585



410-784-7624

10551 Eldon Willing Rd
Chance, MD 21821

bobbykemp@scottscovemarina.com



TOHATSU



75HP

90HP

115HP

Upper Chesapeake Yacht Sales

John Curry • (610) 299-3598
www.upperchesapeakeyachtsales.com



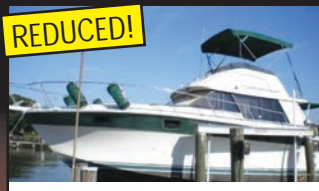
Custom center console sportfishing machine meticulously built in 2007 on a 1974 Bluefin Marine solid glass hull. Low hour continuous duty 300 HP Volvo diesel that burns 0.5 gal/mile at conservative 19 knot cruise. Full tower, hardtop with full enclosure, Rupp outriggers, dive and swim platform with ladder. A must see for the serious offshore fisherman or family looking for a special custom day boat. Major price reduction on this special boat which is ready to go for the 2022 season!



56' '70 Custom Featherstone CC Ketch • gen, AC, loaded, nice • **\$79,900**



41' '94 Gibson Houseboat, T/350hp V-Drives, gen, AC, **\$44,900**



34' '84 Silverton FB Convertible, T/270hp, gen, AC, very nice • **\$19,900**



34' '05 Rinker 342 Fiesta Vee T/300hp Mercs, new Bill, gen, AC, loaded & mint • **\$69,900**



33' '92 Sea Ray Sundancer T/5.7L Merc V-Drives, gen, AC **\$25,900**



29' '84 Dyer Soft Top Express • 200hp diesel, very nice • **\$64,900**

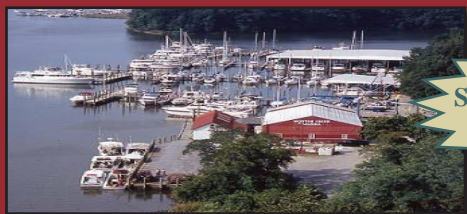


26' '07 Sea Ray Sundancer, 300hp Merc, genset, AC, mint **\$49,900**



26' '86 Pacemaker FB Cruiser New 350hp Merc, very nice **\$24,900**

34' '00 Formula 34 PC , T/300hp, gen, AC, very nice	\$49,900
28' '74 Bertram FB , newer 315 Inboards, AC, clean	\$17,900
26' '02 Bayliner 2655 Cierra , 5.0L, AC, nice.....	\$19,900



Expect The Same Superior Service From Our Brokerage That You Get From Our Marina

BOAT SALES & BROKERAGE

• Financing & Insurance Available •

WORTON CREEK MARINA

23145 Buck Neck Road • Chestertown, MD 21620

(410) 778-3282

SAILBOATS MOTORBOATS • YACHTS

Best and Fastest Access to the Bay

- Winterizing
- Shrink Wrapping
- Service & Repairs
- Cleaning • Sanding • Painting



- 100+ Wet Slips
- 70+ Rack Boatel
- 50+ Outdoor Racks
- Trailer Parking
- High Speed Wireless



4819 Woods Wharf Road
Shady Side, MD 20764

410.867.4800
parishcreeklanding.com

YEAR ROUND
**SLIPS • BOATEL
SERVICE**

GOLDSBOROUGH'S MARINE



"Where Happiness Is Just A Boat Ride Away"

www.crisfield.com/gold



HAPPY HOLIDAYS SALE!!!!



\$40,995

LOOKOUT BAY 19 CC
w/Yamaha 115hp, EZ Loader alum trl



\$33,695

LOWE FM177 SC
w/Mercury 90hp, Lowe galvanized trl



\$9,195

LOWE 1448M TILLER
w/Mercury 25hp, Lowe galvanized trl



\$69,995

**C-HAWK
25FT CC**
w/Yamaha
150hp,
5 Starr alum trl



\$32,965

**LOWE
RX18 CC**
w/Mercury
60hp, Lowe
galvanized trl



\$2,295

**LOWE
1040 JON TILLER**
with
Mercury 3.5hp



EZ Loader
A96BS 16-18 2450
Galvanized

\$3,245



Trailer
Blowout
Special!



Load Rite
1,700lbs Galvanized
Bunk Trailer

\$2,695

Ph.# 410-968-0852 • 709 W. Main St., Crisfield, Maryland • Email: merc71@verizon.net

SEE US AT
CHESAPEAKE BAY BOAT SHOW
JANUARY 20-22 • MARYLAND STATE FAIRGROUNDS



JEANNEAU

AT THE SHOW!



LEADER 12.5 WA

AT THE SHOW!



NC 1095 FLY

AT THE SHOW!



LEADER 9.0 WA

AT THE SHOW!



NC 795

AT THE SHOW!



NC 795 SPORT

AT THE SHOW!



LEADER 7.5 CC

AT THE SHOW!



LEADER 6.5 WA

AT THE SHOW!



NC 695



NC 695 SPORT



LEADER 6.5 CC



YAMAHA



REPOWER HEADQUARTERS

Conveniently
 Located on
Rt 113



Where Family Boating Begins

Delaware has
NO SALES TAX!

Near:
 Fenwick Island
 Bethany Beach
 Ocean View
Ocean City, MD



302-945-2254 • 32606 DuPont Blvd Dagsboro, DE 19969
443-995-3785 • 3033 Kent Narrows Way South, Suite 3 Grasonville, MD 21638



SAVE when you Sell ...and when you Buy

boaters first[™]
yachtX.com

The trusted alternative to high cost brokerage and the hassle & risks of FSBO, we make selling your boat easy, safe and produce better outcomes with professional advisors, Web transaction management, escrow and multi-platform marketing - all for just 1.5% or less.

Ask about our buyer representation rebate
... and YachtX Rewards[™] referral program.

boaters saving 85% in selling costs through yachtX.com



boaters receiving thousands in buyer rebates through yachtX.com



443.888.9190

"YachtX", "Boaters First", "YachtX Rewards" are trademarks of YachtX, Inc.



CAROLINA SKIFF**23 Ultra****SEA CHASER**
By: Carolina Skiff, Inc.**24 HFC**

Powered by:



DANNY'S MARINE
(410) 228-0234 • www.dannysmarine.com
 Located on US Rt 50 (mile marker 86) • Chateau Drive near Linkwood, MD
dannysmarine@comcast.net

Limited Time Offers. Not all models qualify. See Participating Suzuki Marine dealer for details or visit www.suzukimarine.com
 ©2020 Suzuki Motor of America, Inc.

**Fishin' Boats From
Fishin' Folks**

Holiday Savings

**\$219,995**

2022 Key West 263 FS - Yamaha F300XSB 85 hours

**\$65,000**

2020 Key West 219 FS - Center Console, Yamaha Engine

**\$149,900**

2016 Cape Horn 27 CC - Yamaha Engine, with trailer

**\$39,900**

2019 C-Hawk Boats 23 Center Console - Honda BF150A with trailer

**\$39,990**

2019 Carolina Skiff 21 Sea Chaser - Suzuki DF140A, with trailer

**\$14,900**

2016 May-Craft 17 - 2020 Mercury 40hp 4 Stroke Tiller, 2016 Trailer

GOOTEE'S MARINE

South of Cambridge On Maryland's Eastern Shore
 1439 Hooper's Island Road, Church Creek, Maryland

800-792-0082
Gootees.com

Thinking of buying a yacht or boat?

Your best online search option is
CurtisStokes.net



Worldwide Yacht Sales | Yacht Charters | New Yacht Construction

Telephone: 410.919.4900 • Email: info@curtisstokes.net

ALMARS

PLEASE CALL FOR UPDATES!
Motors Are Slowly Arriving!

We Are A Full Service, Premier Mercury Outboard Repair Center! Let Our Certified Mercury Technicians Service Your Mercury Motor Needs!

NOW IN STOCK!

SEVERAL SMALL MOTORS 2.5HP - 150HP!

Call for Configuration & Compatibility!



2.5HP

3.5HP

4HP

5HP

6HP

8HP

9.9HP

15HP

20HP

25HP

50HP

60HP

75HP

115HP

150HP

THESE WILL GO FAST!



CALL
**NOW TO
ORDER
YOUR
4-STROKE!**



150
4-stroke
Black



150 ProXS
4-stroke
Black



175XL ProXS
4-stroke
Black



200
Sea Pro
Black



225XL
4-stroke
Black



250 XL
4-stroke
White

**100's of Used Cowllings
In Stock!
Call for Availability!**

**We Now Offer
INJECTOR SERVICE
with ONE Day Turnaround**

REMANUFACTURED OUTBOARD ENGINE SALE!

90hp - 250hp 1 Full Year Warranty

Starting As Low As \$5,995 Call for Details!

**CALL US
FOR GREAT
DEALS ON
NON-CURRENT
POWERHEADS!**

Call us for current pricing new current
and noncurrent outboards
NO SALES TAX IN DELAWARE!

701 Washington St., New Castle, DE

302-328-8541

www.almarsoutboards.net

All prices good
while supplies last!

HOURS: Monday - Friday: 8am - 5pm

CALL FOR GREAT PRICING ON NEW
& USED MERCURY OUTBOARDS

NO HIDDEN COSTS

NOT RESPONSIBLE FOR TYPOGRAPHICAL ERRORS



Pricing includes all rebates.

SOLD



2016 Ocean Yachts Bill Fish • \$599,000

SOLD



2017 37' Monterey • \$292,000

WANT TO SELL YOUR BOAT FAST ?

A successful brokerage program starts with exposure. Due to our size, Clarks Landing can offer more exposure than most other brokers.

- ✓ Reduced Commissions
- ✓ Free Land Storage Program
- ✓ In House Marketing Team
- ✓ Family-Owned over 40 Years
- ✓ **Free Drone Media Package for Listings over \$75K**
Locations in NJ & MD

Get A Free Market Analysis

www.ClarksLanding.com

BUY NOW CRUISE LATER! **CLARKS LANDING** YACHT SALES

Cutwater's
New Premium Brand!

SOLARA





In Stock!

25 Centerwalk



In Stock!

25 Dual Console



Incoming!

25 Coupe



In Stock!

31 Centerwalk



BENETEAU





In Stock!

Flyer 8 Spacedeck



In Stock!

Flyer 9 Sundeck



Incoming!

32 Gran Turismo



Incoming!

41 Swift Trawler

New Dealer
For

Wellcraft®



LEFTOVER!



In Stock!

202 & 222 Fisherman

LEFTOVER!



In Stock!

242 Fisherman



In Stock!

262 Fisherman



Incoming!

355 Commuter

CLARKS LANDING

YACHT SALES

on the Manasquan River
847 Arnold Avenue
Point Pleasant, NJ

732-899-5559 • www.ClarksLanding.com



**MIDLANTIC
MARINE
CENTER**
302-436-BOAT (2628)

*Closed Sunday & Monday
Tuesday-Friday 8AM-4:30PM
Saturday 8AM-4PM*

36624 DuPont Boulevard Selbyville, DE
www.midlanticmarinecenter.com

HOT WINTER DEALS!

\$1000 REBATE ON ANY IN-STOCK ALUMINUM FISHING PACKAGE



2022 Starcraft Patriot 16TL
Yamaha F25 Tiller w/ trailer
MSRP \$18,692
Only \$13,998 After Rebate



2023 Starcraft Patriot 16 DLX SC
Yamaha 40LA w/ trailer
MSRP \$26,383
\$1000 Rebate • Please Call



2022 Starcraft Stealth 166SC
Yamaha F70LA w/ trailer
MSRP \$34,407
Only \$27,902 After Rebate



2023 Starcraft Stealth 166DC
Mercury 60 4-Stroke CT w/ trailer
MSRP \$34,290
\$1000 Rebate • Please Call



2023 Starcraft Storm 176SC
Mercury 60 ELPT 4-Stroke w/trailer
MSRP \$39,623
\$1000 Rebate • Please Call



2019 Starweld Fusion 16 SC Pro
Mercury 90 ELPT 4-Stroke w/trailer
"PRE-OWNED"
Only \$21,595 After Rebate

***Rebate good through Jan 20, 2023 ONLY!**

New Inventory Arriving Weekly!



**5 STAR
TRAILERS**

LOADRITE



THE 2ND ANNUAL *Chesapeake Bay* BOAT SHOW



Presented by The Marine Trades Association of Baltimore County

75+ Boat Brands

January 20-22, 2023

Find us on:



Maryland State Fairgrounds

OVER 30+ Maryland Boat Dealers • 80+ Exhibitors

The following dealers and others will be showcased:



MEDIA SPONSORS: *ProTalk*



Fishing Seminar Pavilion presented by:



Tickets \$10 | Military \$7 | Ages 12 & Under Free
Free Parking | Food & Drink
www.TheChesapeakeBayBoatShow.com





IN STOCK NOW FOR IMMEDIATE PURCHASE

**BOAT SHOW SPECIAL
YAMAHA F115LB ONLY \$9,999***

F300XB

~~F250XB~~

F200XB

~~F200LB~~

VF175XA

F150XB

LF150XB

F150LB

VF150XB

F115XB

~~VF115LA~~

F115LB

F90LB



F70LA

F60LB

T60LB

F40LA

F40LEHA

F25SWHC

F25LWHC

F25SWTHC- POWER
TILT

F25LWTHC- POWER
TILT

F9.9LMHB

T9.9XWHB

F9.9SMHB

F6SHA

F4SHA

F2.5SMHB

**AVAILABLE
MODELS**

**FINANCING
ON ALL
MODELS
AVAILABLE**

**AVAILABLE
MODELS**

**RUDY MARINE IS RENOWNED FOR
EXPERT ENGINE RIGGING SERVICES**

VERY LIMITED QUANTITIES ON SOME MODELS



DEALER INQUIRIES WELCOME

32606 DUPONT BOULEVARD, DAGSBORO, DE 19939
ONLY MINUTES FROM THE CAPE MAY-LEWES FERRY

DELAWARE HAS

302-945-2254

NO SALES TAX!

*All Previous purchases are excluded

ANNAPOLIS CRUISAIR, INC.

Family Owned & Operated for Over 50 Years
SALES • SERVICE • INSTALLATION



U-LINE
U-Line Ice makers
110/115vAC

We will meet or beat
any competitive
price quote for
these products!

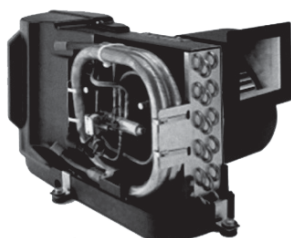


Marine Diesel
Heaters

Espar

Cruisair®

New Turbo
Air Conditioners • Heat Pumps



• We Have • BREATHE EASY AIR FILTERS

Sentry™
Cruisair

BATTERY
CHARGERS



SAFEST
CHARGER
ON THE
MARKET!

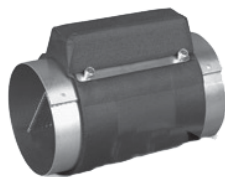
**Eskimo Ice
600 Ice Pump**

Provides up to 600 lbs. of fresh
ice in a day from your ships
water tank.



STINKY BOAT?

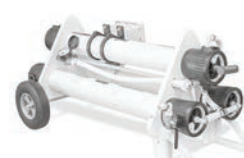
We Have **NEW**
Breathe Easy
Air Purifiers



➔ **DOMETIC**

SPOTZERO®
Fresh Water Reverse Osmosis

Water Purification Systems



Vitrifrigo
REFRIGERATORS

WAECO
Adler/Barbour®



MARINE AIR SYSTEMS®

AIRRRRRRRRR
by Dometic GROUP



KOHLER.

- Generators -



Fischer Panda

Onan

2124 Renard Ct. • Annapolis, MD
(410) 224-0970 • (410) 974-6136 • Fax (410) 224-0050
www.annapoliscruisair.com

22nd Annual
**Greater
Philadelphia**



BOAT SHOW

15+ Dealers from **3** States

JANUARY 27-29
EXPO CENTER AT OAKS



Fri 1-8 • Sat 10-7 • Sun 11-5 • Adults \$10 • FREE Parking
(CASH ONLY)

www.phillyboatshow.com

ADVERTISERS INDEX

ALMARS.....	9	GOOTEE'S MARINE.....	7
ANCHOR BOATS.....	24	GREATER PHILLY BOAT SHOW.....	15
ANNAPOLIS CRUISAR, INC.....	14	J.J. BEST BANC & CO.....	21
ATC AUTO/MARINE TRAINING CENTER.....	20	MIDLANTIC MARINE CENTER.....	11
BOAT LIFTS UNLIMITED.....	16	PARISH CREEK LANDING.....	4
CHESAPEAKE BOAT BOAT SHOW.....	12	RUDY MARINE.....	5, 13
CLARKS LANDING.....	10	SCOTT'S COVE MARIA.....	2
CURTIS STOKES.....	8, 22	UPPER CHESAPEAKE YACHT SALES.....	3
DANNY'S MARINE.....	7	WATERFRONT.....	23
GOLDSBOROUGH'S MARINE.....	4	YACHTX.....	6

THE LARGEST LOW PROFILE BOAT LIFT MANUFACTURER IN THE USA

**CALL
US FOR
YOUR LOCAL
DEALER!**



Choose The Right Boat Lift, Choose

MAGNUM

BOAT LIFTS

Personal Watercraft Lifts

- Low Profile Design • Low Maintenance • 2/5 Yr Warr.
- Outside Walkway • Galvanized Steel Construction
- Aluminum Cradles Available • Capacity 800-40,000 lbs. www.magnumlift.com

Fully
Insured

BOAT LIFTS UNLIMITED

410-674-3100 • 1-800-268-5911

**WE SERVICE
MOST MAKES
OF BOAT
LIFTS!**

Located in Odenton, MD, this full-service boat lift manufacturer has a network of over 180 distributors serving the Chesapeake Bay, Great Lakes and Atlantic Coast with Magnum Boat Lifting Products. Boat Lifts Unlimited is dedicated to customer satisfaction through prompt, courteous service on most existing boat lifts and timely installation of new boat lifts. Quality materials, attention to detail and innovative design have made Boat Lifts Unlimited one of the largest boat lift manufacturers in the U.S.

FREE LISTING WITH PHOTO ON THE INTERNET

PRIVATE AD RATES

- ☐ INTERNET ONLY UP TO 1 YEAR..... \$49⁰⁰
☐ 3 ISSUES NO PHOTO CLASSIFIED..... \$59⁰⁰
☐ 3 ISSUES WITH COLOR PHOTO
 WITH COLOR PHOTO ON INTERNET..... \$69⁰⁰
☐ INTERNET FEATURE ADD ON 4 WEEKS
AVAILABLE WITH AD PURCHASE ONLY!
 ON THE SALTY DOG HOME PAGE..... \$49⁰⁰
☐ FRONT COVER..... \$40⁰⁰
☐ FACEBOOK FEATURE..... \$15⁰⁰
☐ PUBLICATION MAILED TO YOU..... \$2⁰⁰

TOTAL

FRONT COVERS ARE BASED ON AVAILABILITY

- ☐ CHECK ☐ MONEY ORDER ☐ DISCOVER
☐ MASTERCARD ☐ VISA ☐ AMERICAN EXPRESS

CC#

Expiration Date _____ Security Code _____

Advertiser's Name

Address

Phone

Where did you pickup "The Salty Dog"?

Store _____ Town _____

Fill out the description form below, **up to 125 characters (including spaces & punctuation) of advertising**. Please put one character per space beginning with the motor. Include a check, money order or credit card, and mail to us with a good quality COLOR photograph of your boat. Photos will only be returned if accompanied by a self-addressed stamped envelope.

AD COPY

FT. _____ YR. _____

MANUF. / MODEL _____

MOTOR _____

ACCESSORIES _____

LOCATION OF BOAT _____, _____, _____
City State Zip Code

PRICE _____

PHONE # _____

EMAIL _____

Send to: The Salty Dog
254 Brick Blvd • Suite 1
Brick, NJ 08723

888-843-1585

Fax (732) 477-9000 • Email: info@thesaltydog.com

No refunds after Ad is processed. • Advertiser will be responsible for \$20 fee on returned checks.

YOUR BOAT LISTING CAN ALSO BE SUBMITTED ON THE INTERNET www.thesaltydog.com

SPECIAL FEATURES

UPCOMING BOAT SHOWS Pgs. 12, 15

PRIVATE BOAT ADS Pgs. 18-20

SUBSCRIPTION CHESAPEAKE BAY

SALTY DOG is published Bi-weekly 25 times a year.

Papers are mailed **FIRST CLASS**. Your first issue will be mailed within 1 week.

To subscribe, just fill in the amount of issues and multiply by \$2.00*

No. of issues _____ x \$2.00* = Total Cost _____

☐ CHECK ☐ MONEY ORDER ☐ MASTERCARD ☐ VISA

Credit Card No. _____

Exp. Date _____

Signature _____

Name _____

Address _____

City _____ State _____ Zip _____

Telephone _____

*Canada Subscription Add 10% - Bermuda Subscription Add 30%
 Outside the Continental USA Add 50% • Credit Cards Only Outside USA


Mail To: THE SALTY DOG, 254 Brick Blvd • Suite 1, Brick, NJ 08723


A Bi-weekly Publication for
 Powerboats, Sailboats, Marine
 Equipment, Supplies, Services,
 Waterfront and Photo Ads

For More Info on Display Ads or Internet Listings
Call 888-843-1585 • Fax (732) 477-9000
info@thesaltydog.com • Mon.- Fri. 9:00 am to 4:00 pm

See Color Photo on the Internet



46' 1982 ALUMINUM CREW BOAT, (2) 871 Detroit Dsls, loaded & clean, no dents, 10kw gen, 2 prop wash available, **732-928-4519 venturediveboat@aol.com** 158167

See Color Photo on the Internet



30' 2018 WELLCRAFT SCARAB 302, T/Mercury Verado 400Rs, 255 hours, Triple Black, loaded w/electronics & sound system, never fished, lift kept! **\$189,900, 917-817-5084 info@deepwaterlanding.com** 157631

See Color Photo on the Internet



www.seaportinletmarina.com
Yamaha 4-Stroke **\$69,500**
Info 732-681-3303
Grady 282 year 2005
28' 2005 GRADY-WHITE 282
Yamaha 4-stroke
\$69,500, 908-489-5098

154794

See Color Photo on the Internet



38' 2006 SEA RAY 38 SUNDANCER, Twin 8.1S Mercruiser 370 I/O, 320 hours, Kohler gen, side power bow thruster, **\$199,000, 732-899-8010 sales@schraderiyachts.com** 157963

See Color Photo on the Internet



www.seaportinletmarina.com
30' Gamefish **\$149,500**
Twin 300's
480 hours
Yamaha
Info 732-681-3303
2014 Seahunt
30' 2014 SEA HUNT 30 GAMEFISH
T/300hp Yamahas, 490 hours
\$149,500, 908-489-5098

154798

See Color Photo on the Internet



28' 2006 SEA RAY 280 SUNDANCER, T/4.3L Mercs, full cover, camper cover, sleeps 6, full head & galley, Asking **\$48,900, 917-817-5084 info@deepwater-landing.com** 157632

See Color Photo on the Internet



36' 2002 SPECTRE CAT, Twin 500hp Mercruisers, low hours, extremely well kept, immaculate condition, trailer included, **\$80,000 FIRM! 732-864-6937 jerempeters2002@gmail.com** 153768

See Color Photo on the Internet



www.seaportinletmarina.com
Yamaha 4 strokes
Only 480 hours
Belmar NJ
\$77,900
Info 732-681-3303
SeaSwirl 2901 Year 2005
29' 2005 SEASWIRL 2901
Yamaha 4-strokes, only 480 hours
\$77,900, 908-489-5098

154796

See Color Photo on the Internet



28' 1990 SEA RAY 280 Sundancer, Twin Mercury V-6, VHF, Garmin GPS, DF, Fridge, Microwave, FW tank, 120 Gal fuel, Full Canvas, Clean and Dry Cabin, Marina Maintained, **\$17,900, 908-309-4016 almarinarine1@gmail.com** 154766

See Color Photo on the Internet



32' 2019 WORLD CAT 325 DC, T/Yamaha 300hp 4-stroke, approx 237 hrs, Garmin, Optimus 360, Sea Station & SeaWays autopilot, 6 person Viking life raft, Panda-Fisher dsl gen, **\$379,000, 732-899-8010 sales@schraderiyachts.com** 157371

See Color Photo on the Internet



www.seaportinletmarina.com
Super clean
Re-powered 2011
Yamaha 300's
987 hours
Info 732-681-3303
Regulator 29FS 2007
29' 2007 REGULATOR 29FS
repowered 2011 Yamaha 300s, 987 hours, super clean
908-489-5098

154797

See Color Photo on the Internet



www.seaportinletmarina.com
20k in upgrades
in 2021
Only 130 hours
Belmar NJ
Info 732-681-3302
282 Mako 2006
28' 2006 MAKO 282
only 130 hours, \$20K in upgrades in 2021
908-489-5098

154795

See Color Photo on the Internet



32' 2017 CHRIS CRAFT LAUNCH 32 HERITAGE
Volvo 350hp, windlass, Garmin, **\$269,000**
732-899-8010 sales@schraderiyachts.com 157614

See Color Photo on the Internet



www.seaportinletmarina.com
\$249,800
Grady 285
2019
Belmar NJ
Fully loaded sunshade and joystick & more
Perfect condition
Text Rob 908-489-5098
Call today 732-681-3303
28' 2019 GRADY-WHITE 285
fully loaded, sunshade, joystick & more, perfect condition!
\$249,800, 908-489-5098

158168

See Color Photo on the Internet



27' 2017 GRADY-WHITE 271 WHITE CANYON, Twin F-300 Yamaha, warr til 5/23, 249 hrs, guest batt charger, dockside AP, GPS, VHF, ORs, head, windlass, tri-axle galv, **\$190,000, 302-226-3734** 156596

See Color Photo on the Internet



31' 1988 TIARA SPORTBOATS BY S2 YACHTS 3100 Open, Velvet drive 191-1 Ratio. Interior in good cond. Slips 2 in the bow, and the u-shaped table folds into a bed. 1/2 bath, A/C and heat. **\$10,000, 302-462-5311 justicekeri@gmail.com** 158031

See Color Photo on the Internet



28' 2021 Tidewater ADVENTURE CC, T/Yamaha F250, approx 62 hrs, Joystick, 1 Garmin 10" XHD radar, structure scan, ORs, windlass, **\$204,900, 732-899-8010 sales@schraderiyachts.com** 158170

See Color Photo on the Internet



27' 2018 SEA CHASER CC, T/200hp Suzukis, lift kept (no bottom paint), loaded, 125 hours, **\$109,900, 917-817-5084 info@deepwaterlanding.com** 158169

See Color Photo on the Internet

27' 1992 BOSTON WHALER 27 OFFSHORE, New T/Honda 225hp ('13), new fuel tanks ('13), 580 engine hours, 270 gal fuel, offshore elects, ready to fish, \$52,500, 917-817-5084 info@deepwaterlanding.com 156325

See Color Photo on the Internet

24' 2007 PRO-LINE Center Console, 250HP Mercury OB, livewell, GPS/radar, stereo, outriggers, custom enclosure, covers, stereo, new upholstery, professionally maintained, low hrs, \$30,000, 908-510-7468 ryan@arshelps.com 156423

See Color Photo on the Internet

23' 2008 SUGAR SAND OASIS AIRWAVE, 250hp Opti Jet Drive, tower, bimini, snap in carpet, table, full cover, new wear ring & SS impeller ('21), 280 hrs, fast boat, \$15,995, 908-309-4016 almmarine1@gmail.com 156290

See Color Photo on the Internet**Steiger 25DV Miami**

25' 2020 STEIGER CRAFT 25DV MIAMI
150 hours mint
\$149,500, 908-489-5098

154790

See Color Photo on the Internet**Grady 236 Fisherman**

23' 2020 GRADY-WHITE 236 FISHERMAN
Yamaha 300, only 50 hours
\$149,500, 908-489-5098

154789

See Color Photo on the Internet

22' 2016 BOSTON WHALER 220 OUTRAGE VERY RARE, T/150hp Mercury Verados, 157 hrs, dual Raymarine screens, loaded, head, t-top, good elects, trailer, one owner, \$112,900, 917-817-5084 info@deepwaterlanding.com 156842

See Color Photo on the Internet

25' 2019 SPORTSMAN 252 OPEN, Yamaha F300 UCA, 12" Garmin MFD w/radar, outriggers, windlass, livewell, underwater lights, \$114,000, 732-899-8010 sales@schraderyachts.com 154578

See Color Photo on the Internet

23' 2021 GRADY-WHITE 236 FISHERMAN, 300hp Yamaha 4-stroke, loaded w/elects, bottom painted, very low hrs, new roller trl., \$133,000, 908-902-0220 tkwireless@optonline.net 158172

See Color Photo on the Internet

22' 2001 CENTURY DUAL CONSOLE, 200hp Yamaha SWS, bimini, new Garmin, new canvas, new cushion upholstery, bottom paint, Bluetooth stereo, trailer, \$15,900, 732-948-6003 jshank925@gmail.com 154952

See Color Photo on the Internet

25' 2008 CHRIS CRAFT LAUNCH 25 HERITAGE EDITION, Merc 496 FWC Seacore V8, Bill, new covers, new Garmin GPS/DF, \$60,000, 732-899-8010 sales@schraderyachts.com 156292

See Color Photo on the Internet

23' 2001 CONTENDER CENTER CONSOLE, New T/Honda 150 IST w/5 year warranty, NEW: steering, Garmin w/18" radar, interior, paint, stereo/speakers, Eisenglass, w/trl, \$85,000, 917-817-5084 info@deepwaterlanding.com 158131

See Color Photo on the Internet

21' 1976 BOSTON WHALER OUTRAGE, 150hp Johnson Ocean Runner, professionally restored, turn key, ready to go!, \$19,500, 732-270-0022 nelsonmarinebasin@comcast.net 157989

See Color Photo on the Internet

25' 2008 CHAPARRAL 256 SSI, Volvo I/O, new transom assembly, 165 original hours, ready to go! MAKE OFFER! \$33,900, 917-817-5084 info@deepwaterlanding.com 155615

See Color Photo on the Internet

23' 2013 PARKER 23SE, Yamaha F200, 863 hrs, T-tabs, leaning post, livewell, t-top, Garmin GPS/sonar 4210 with radar, D/A Load Rite trailer, \$55,500, 732-899-8010 sales@schraderyachts.com 157962

See Color Photo on the Internet

21' 1998 HYDRA-SPORTS CENTER CONSOLE
150hp Johnson Ocean Runner, trailer
\$6,500, 732-998-5255 plyn2547@gmail.com 158171

See Color Photo on the Internet**Grady Dolphin 251**

25' 1994 GRADY-WHITE 251 DOLPHIN
clean
\$19,500, 908-489-5098

154791

See Color Photo on the Internet

23' 2009 PARKER 2320 SL SPORT CABIN, Yamaha F200, 750 hours, West Coast bow rail, Garmin SXV CP/FF, custom hand rails, \$54,000, 732-899-8010 sales@schraderyachts.com 157964

See Color Photo on the Internet

20' 2008 SEA HUNT 207 TRITON, 150hp Honda w/approx 1 yr of warranty left, approx 400 hrs, LOADED - t-top, Garmin GPS/radar, newer cushions, full Eisenglass w/wings, porta potty in console, trailer, \$29,900, 732-223-0400 info@deepcreekcove marina.com 157772

See Color Photo on the Internet



**16' 2016 CRESTLINER
1650 DISCOVERY**

side console, Mercury 50hp,
3 batteries, full cover, FF,
trolling motor, 37 hours, like new

\$15,900

908-309-4016

almarmarine1@gmail.com

154951

See Color Photo on the Internet



2016 SEA DOO GTX 155 PAIR, 27 hours/36 hours, one owner,
prof maint'd, covers, light use, lift available for sale!, \$17,000,
917-817-5084 info@deepwaterlanding.com 156843

Boat Dealers & Brokers...

YOUR AD could be HERE

....Reaching out to well over 30,000
interested home owners and prospects!

We're the original
FREE Boating Publication.....
and readers find a new copy on the
stands...every other week.

For more information,
call the leader in targeted
boat advertising

Toll Free 1-888 -843-1585

MARINE TECHNICIAN TRAINING

RIDE THE CREST to CAREER SUCCESS



ENROLL FOR TRAINING TO BECOME A PROFESSIONAL **MARINE SERVICE TECHNICIAN**

Our in-depth program includes training in: Seamanship, AC & DC Electrical, ABYC Standards, Air Conditioning & Refrigeration, Mechanical Systems, Stern Drives/Transmissions, Computerized-Fuel Injected Inboard and Outboard Engines, Inboard, Outboard and I/O Systems, Electronic Diesel Engines (Cummins QSB 5.9 380 HP Common Rail Trainer), Fiberglass & Gelcoat Repair, Plumbing and Sanitation Systems.

Financial Aid for those who Qualify • Career Placement Assistance



CALL NOW

866-656-7794

www.autotraining.edu

900 Johnsville Blvd., Warminster, PA 18974

Supported by



with Training Materials & Equipment

For required program disclosure information, please go to www.autotraining.edu/consumerinformation.



Apply for a Low Rate Boat Loan Today

100% Financing Available, Quick Approvals, Low Rates,
Long Term Programs & NO Prepayment Penalties.

**Get Pre-Approved NOW at
JJBESTBOATLOANS.COM
OR CALL 1-800-USA-1965.**

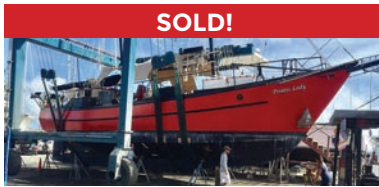


Scan Me!

Estimated APR based on 5 year loan term; individual rate may vary based on loan amount, loan term, boat use, model year and type of boat. Subject to consumer loan program requirements and credit approval. Rates and terms are subject to change based on market conditions and borrower eligibility. Certain fees, closing costs, and restrictions may apply. APR applied to the loan is the APR in effect on the date your application is received and is valid for 30 days. Minimum loan amount for pleasure use is \$10,000 in all states. J.J. Best Banc & Company operates under the name J.J. Best & Company. v



Worldwide Yacht Sales | Yacht Charters | New Yacht Construction



SOLD!

72' Trade Rover



SOLD!

50' Chris-Craft



SOLD!

48' Evans Boats



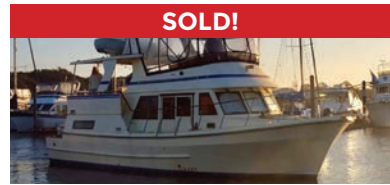
SOLD!

44' DeFever



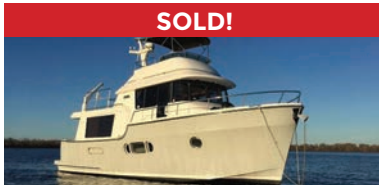
SOLD!

44' Gulfstar



SOLD!

42' Fu Hwa



SOLD!

40' Fathom



SOLD!

40' Hinckley



SOLD!

36' C&C



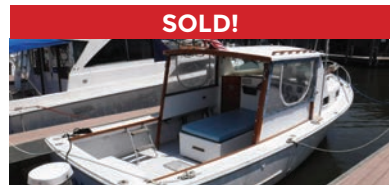
SOLD!

36' Bristol



SOLD!

32' Eagle



SOLD!

26' Sisu

List your boat with us and join our **SOLD list!**

To see more details about these and all other yachts around the globe, please visit our website below.

Annapolis, MD • St. Michaels, MD • Delaware City, DE • Deltaville, VA • Woodbridge, VA
Telephone: 410.919.4900 • Email: info@curtisstokes.net

www.curtisstokes.net



WATERFRONT MARINE

#1 GOLL AVE, SOMERS POINT, NJ ~ 609-926-1700

281 PRINCETON AVE, BRICK, NJ ~ *Featuring Chaparral* ~ 732-202-6961

2822 SOLOMON'S ISLAND RD, EDGEWATER, MD ~ 443-949-9041

Premium Brands ~ Exceptional Service

WWW.WATERFRONTMARINE.COM

BOATS AVAILABLE IN STOCK & PRODUCTION SLOTS AVAILABLE TO CUSTOMIZE!



- PREOWNED BOATS -



2018 Robalo 242 CC
Yamaha F300 • \$89,900



2020 Robalo R230 CC
Yamaha F250, lift kept • \$85,900



2008 Sea Ray 52 Sedan Bridge
T/QSM-11 Cummins Dsls
\$536,900

2022 Contender 44 ST



Factory Demo!

Triple Yamaha 425 XTO's, electronics,
Sea Keeper, loaded w/options &
features, new warranties,
Available for Immediate Delivery!
Call Today for Pricing!

BOWRIDERS & PONTOONS

30' '16 Chaparral 307 SSX, T/Volvo 300hp I/O	\$189,000
30' '22 Chaparral 300 OSX, T/Yamaha F300, Joystick docking	Pending
30' '14 Chaparral 307 SSX, T/Volvo Penta 300DP, joystick	\$139,900
29' '19 Chaparral 297 SSX BR, Volvo Penta 380 DP	Pending
28' '21 Chaparral 280 OSX, T/Yamaha F200	\$179,900
27' '07 Chaparral 276 SSI, Volvo Penta 8.1 GI DP	\$58,900
26' '22 Chaparral 267 SSX OB, Yamaha F300XCB (dig steering)	\$138,500
26' '13 Sea Ray 260 Sundeck, Merc 350 Mag 300hp Blll	Pending
26' '19 Chaparral 264 Sunesta, Volvo Penta 350 DP	\$89,900
26' '14 Chaparral 264 Sunesta, Volvo Penta 320DP, 62 hrs	\$69,900
25' '21 Bennington 250QXFBWA, Yamaha F250	\$159,900
25' '16 Chaparral 250 Suncoast, Yamaha F300, lift kept	\$72,500
24' '11 Chaparral 246 SSI, Volvo Penta 5.7L GI 300 DP	Pending
24' '19 Chaparral 244 Sunesta, Volvo Penta 300 DP	\$69,900
23' '22 Chaparral 23 SSI Bowrider, Yamaha F200	\$71,500
23' '21 Bennington 23 LSB Tri-Toon, Yamaha F150	\$59,900
23' '08 Cobalt 232 Bowrider, Volvo Penta 300 320DP, trl	\$29,900
21' '19 Chaparral OB 21 H2O Sport, Yamaha F150	Pending
21' '16 Chaparral 21 Fish & Ski, trailer	\$39,900
20' '17 Regal 2000 ES Bowrider, Volvo Penta, 40 hours	\$36,500
19' '16 Sea Ray SPX 190 Bowrider, Merc 150 XL, trl	\$32,900

FISHING BOATS

36' '22 Robalo R360 CC, Triple Yamaha F300, lift kept	\$597,000
31' '22 Robalo R317, T/Yamaha F300, Joystick docking	\$289,900
26' '16 Sea Fox 266 Commander CC, T/Yamaha F150s	SOLD
26' '13 Scout 262 Abaco, WAC, T/Yamaha F150	SOLD
24' '18 Robalo R242 CC, Yamaha F300	\$89,900
24' '19 Robalo R247, Yamaha F300	\$199,500
24' '07 Edgewater 245 CC, T/Yamaha F150	SOLD
23' '20 Robalo R230 CC, Yamaha VF 250 XA, alum trailer	\$85,900
22' '16 Robalo R222 CC, repowered Yamaha VF250, 40 hrs, trl	SOLD
20' '18 Robalo R200, Yamaha F150	\$54,900
20' '16 Robalo R200, Yamaha F150	SOLD
20' '18 Robalo R207 DC, Yamaha F150	Pending

CRUISERS & CUDDY CABINS

52' '08 Sea Ray 52 Sedan Bridge, T/QSM-11 Cummins Dsl	\$536,900
27' '19 Chaparral 270 Signature, Volvo Penta V8 300 DP, gen	\$114,900
23' '11 Crownline 236SC, Merc 350 Mag Blll, Loadrite galv roller trl	\$27,900
22' '01 Sea Ray 225 Weekender, 300hp Merc I/O, Blll	\$16,900

PERSONAL WATERCRAFT

2016 Sea Doo GTR 215, w/trailer	\$9,500
---------------------------------------	---------



AUTHORIZED
PARTS &
SERVICE

MERCURY
MerCruiser



YAMAHA
When you want the best

VOLVO
PENTA



Full Service
Marina w/Slips &
Racks Available!

NOW IS THE TIME TO BUY!

OPEN 7 DAYS A WEEK



FOUR WINNS



KW
KEY WEST



Scout
Discover More...



Great Selection of
Pontoons In Stock!
Call for Info!



G3 Boats



Need a Trailer?
We Have Them
In Stock!

YAMAHA BUILT TO LAST

410.287.8280

ANCHOR
BOATS
North East, Maryland

www.AnchorBoat.com

448 MAULDIN AVE | NORTH EAST, MD 21901

Parts & Service
General Boat Repairs
High & Dry Boat Storage