

Free!



The Salty Dog®



CHESAPEAKE BAY EDITION

Published Every Other Week • Distributed in Maryland, Delaware, Southern Pennsylvania and Virginia

POWERBOATS & SAILBOATS ...Including Marine Services



22' 2005 BOSTON WHALER DAUNTLESS, 225hp Verado, great family & fishing boat, 703 hrs, custom alum t-top & low bracket, upgraded elects, '17 Load Rite trl, **\$29,500**, 610-613-9937, mark@macadam.com 151900



35' 1985 J BOATS, Yanmar fold prop, 2 mainsails (1 new), 1 new Quantum Black jib with add'l sails, spinnakers & kevlar 5lb spin pole, new bottom paint, new backstay, 14 sails, great condition, **\$19,950**, 443-994-4443, jshannah32@gmail.com 148475



24' 2004 STINGRAY 240LR, 300hp Mercury I/O, prof maint'd, runs well, pump out porta potty, dual batts, dual props, bimini converts to full encl, sink, Bluetooth, stern shower, 3 rodholders, **\$15,000**, 609-607-7254, jsawczak9@gmail.com 151903



2017 28' NAUTICSTAR 28XS CENTER CONSOLE, T/F200hp Yamahas, 623 hours, trailer, electronics, ready to fish, **\$115,000 • 302-945-2254**, captain_glen@rt113boatsales.net

**List Your Boat
As Low As \$49!**

Go to www.thesaltydog.com
to get started!

Private Boat Ads Only



25' 2018 GRADY WHITE 257 FISHERMAN, HAS TO GO! READY TO SELL!!!! T/F150 Yamahas, low hrs, 7/23 warranty, factory options, Garmin GPS radar, Icom 504 radio, outriggers, fish inshore/offshore, family cruising, like new, **END OF SEASON SALE! MAKE OFFER! \$119,000**, 302-226-3734, Cell 302-218-9325 144975



NEW 2020 SEA FOX 328 COMMANDER
1 available, no trailers • **\$199,800**
302-945-2254 • anita@rudymarine.com



2017 29' COBIA 296 CC
T/300hp Yamaha 4-strokes, 200 hrs, trl **\$159,000**
302-945-2254 • captain_glen@rt113boatsales.net



NEW 2021 29' JEANNEAU NC 895 SPORT
Twin Yamaha, loaded • Call for Price
302-945-2254 • anita@rudymarine.com

Annapolis, MD • St. Michaels, MD
Deltaville, VA • Woodbridge, VA
Delaware City, DE

CONTACT US TODAY!

info@curtisstokes.net
410.919.4900

**CURTIS
STOKES**
& ASSOCIATES

www.curtisstokes.net

1-888-843-1585 • Private Boat Information on Page 16



HUGE HOLIDAY SALES EVENT!



1 Available!
\$199,800

SEA FOX

NEW
2020
Sea Fox
328
Commander
No Trades



JEANNEAU



NEW 2021 Jeanneau NC895 Sport
T/F250 Yamahas

WAR EAGLE BOATS



2021 War Eagle 2170 Black Hawk
F-150 Yamaha, alum trailer
JUST ARRIVED!



2021 War Eagle 860 Sportsman
F115 Yamaha, alum trailer
JUST ARRIVED!

MONTEREY BOATS



BOAT, MOTOR
& TRAILER
BLOWOUT!
\$49,995

NEW 2019 M225 • Yamaha F150



2020 Misty Harbor A-2285 CF
F-115 Yamaha



2020 Misty Harbor A-2085 CF
F-90 Yamaha



2020 Misty Harbor A-2085 CF
F-115 Yamaha

Rudy Marine.com

Where Family Boating Begins

Delaware has
NO SALES TAX!
3 GREAT LOCATIONS!

YAMAHA



**REPOWER
HEADQUARTERS**

302-945-2254 • 32606 DuPont Blvd Dagsboro, DE 19969

302-999-8735 • 411 S. Maryland Ave. (Rt 4) Wilmington, DE 19804

443-995-3785 • 3033 Kent Narrows Way South, Suite 3 Grasonville, MD 21638

Upper Chesapeake Yacht Sales

John Curry • (610) 299-3598
www.upperchesapeakeyachtsales.com



42' 2016
Regal Sport
Coupe
\$397,900



Fully loaded high end Regal with just 70 hours on Volvo 400hp Diesel motors and IPS drives. Boat was delivered new in April of 2018 which is start of warrantee period. Buy now and be ready for Spring!
We own this boat and trades are considered!



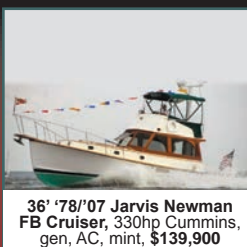
**Trades
Considered!**

42' '16 Regal 42SC,
T/Volvo Dsls with IPS, mint,
loaded, \$397,900



Reduced!

37' '88 Hunter Legend Sloop,
great electronics, nice,
\$35,900



36' '78/'07 Jarvis Newman
FB Cruiser, 330hp Cummins,
gen, AC, mint, \$139,900



37' '85 Beneteau Idylle 11.5,
Perkins Dsl, dink,
\$27,900 OFFERS



31' '13 Bertram Custom SF,
like new, \$200K below
replacement, \$395,000



Reduced!

28' '78 Cape Dory Sloop,
diesel, great starter boat,
\$12,900



34' '80 Sabre Sloop,
Yanmar Dsl, nice,
\$24,900 OFFERS



30' '83 Catalina Sloop,
Diesel, numerous upgrades, nice,
\$14,900



24' '80 Lyman Sportsman,
220hp 1B, restored classic, mint,
trailer included, \$14,900



14' '97 Nouvurania 430 DL
Center Console, 50hp 4-stroke,
trailer, super clean, \$7,900

35' '76 Ericson Sloop, Volvo Diesel, upgrades in process\$14,900



Expect The Same
Superior Service From Our
Brokerage That You Get
From Our Marina

BOAT SALES & BROKERAGE
• Financing & Insurance Available •
WORTON CREEK MARINA
23145 Buck Neck Road • Chestertown, MD 21620
(410) 778-3282


Rt. 113 Boat Sales and Service

Selbyville, DE 302-436-1737
www.Rt113BoatSales.net


TAX FREE

YAMAHA
Re-power with Yamaha's
Unmatched Reliability
TAX FREE!

f YouTube




COBIA from 20 - 35 ft.
Just Better Built in Every Way!



PATHFINDER from 20 - 27 ft. **ANGLER DRIVEN**


Brokered Boats WANTED!
Clean, Late Models up to 35 ft. LOW FEES - GREAT RESULTS!

GARMIN
AUTHORIZED RESELLER



Certified Installer

BOAT TRAILERS
Wholesale Pricing!



Tidewater
TRAILERS

RT113BoatSales.net

HAUL OUT AND TRANSPORT SERVICES AVAILABLE

Brokered Boat Specials Below

***** Bring Offers *****

Cobia 320 CC - 2020 - \$209,900

SOLD



Let Us Sell Your Boat

Tidewater 198 CC - 2017 - \$32,500



Cobia 296 CC - 2017 - \$159,000



NauticStar 28XS - 2017 - \$115,000



WARNING - BE ADVISED

Thinking about Buying a New Boat?
The Marine Industry is expecting additional
Lockdowns do to the virus causing even
more delays to the supply chain.

Place Your Order Now

**Now Booking Orders
for April and May 2021**

Call 302-436-1737

CLARKS LANDING

YACHT SALES



2016 Sea Ray 510 Flybridge
\$899,999

2015 Pursuit 385 Offshore
\$334,900

2020 Blackfin 272 Dual Console
\$175,000

2015 Beneteau Swift Trawler 34
\$309,000

NEW LISTING

SOLD

NEW LISTING

SOLD IN 36 DAYS

WE SPEED UP THE SALE BY TAKING A TRADE ON YOUR BOAT. CONTACT CLARKS FOR A HASSLE-FREE EXPERIENCE.

I was extremely impressed with the professionalism of the Clarks Landing NJ sales team. I was able to find the boat I was looking for and at a great deal! Even after the closing of my new boat, I was happy to have the staff at Clarks Landing list my other boat. They sold my boat in one week! I will only use Clarks Landing for any future boat sales or purchases.

- David, Clarks Landing Yacht Sales Customer

WANT TO SELL YOUR BOAT FAST?

A successful brokerage program starts with exposure. Due to our size, Clarks Landing can offer more exposure than most other brokers.

Our experienced, dedicated team handles the entire transaction, **including financing, marketing, demonstration rides, haul outs, estimates & more.**

List your boat where it is or at one of our facilities.

- ✓ Reduced Commissions
- ✓ Free Land Storage Program
- ✓ In-Water Slips for Yachts
- ✓ Huge Marketing Budget
- ✓ Family-Owned over 40 Years
- ✓ Free Drone Media Package for Listings over \$200K

DISCOVER THE CLARKS LANDING DIFFERENCE

ANNAPOLIS AREA

1442 Ford Road, Shady Side, MD 20764

(410) 867-9550

boatinfmd@clarkslanding.com

JERSEY SHORE

847 Arnold Avenue, Point Pleasant, NJ 08742

(732) 899-5559

boatinfonj@clarkslanding.com

Get A Free Market Analysis

www.ClarksLanding.com

Authorized dealer for





YAMAHA

Revs Your Heart®



Beacon Light
Marina

825 Bowleys Quarters Rd. | Middle River, MD 21220

410-335-6200

beaconlightmarina.com | sales@beaconlightmarina.com

WITH SO MANY WAYS TO HAVE FUN ON A YAMAHA,
It's easy to find yours at Beacon Light Marina



ALMARS

We Are A Full Service, Premier Mercury Outboard Repair Center! Let Our Certified Mercury Technicians Service Your Mercury Motor Needs!

LEFTOVER VERADO SALE!

**YES!!!!
WE ARE OPEN
FOR BUSINESS
8AM-5PM
MONDAY-FRIDAY!**



225hp
black • \$14,995



250hp
black • \$15,995



300hp
black • SOLD



300hp
white • \$18,995



350hp
Call for Great Deal!



350hp
Call for Great Deal!

We Now Offer
INJECTOR SERVICE
with
ONE Day
Turnaround!



150
4-stroke
Black



150 ProXS
4-stroke
Black



175XL ProXS
4-stroke
Black



200
Sea Pro
Black



225XL
4-stroke
Black



250 XL
4-stroke
White

**100's of Used
Cowlings In Stock!
Call for Availability!**

2018 250hp
XXL Opti
\$15,995

250XL PRO
VERADO 15,995
Only 1 Available

REMANUFACTURED OUTBOARD ENGINE SALE!

90hp - 250hp 2 Year Warranty

Starting As Low As \$5,495 Call for Details!

**CALL US
FOR GREAT
DEALS ON
NON-CURRENT
POWERHEADS!**

**Call us for current pricing new current
and noncurrent outboards
NO SALES TAX IN DELAWARE!**

701 Washington St., New Castle, DE

302-328-8541
www.almarsoutboards.net

All prices good
while supplies last!

HOURS: Monday - Friday: 8am - 5pm
CALL FOR GREAT PRICING ON NEW
& USED MERCURY OUTBOARDS

NO HIDDEN COSTS
NOT RESPONSIBLE FOR TYPOGRAPHICAL ERRORS



Pricing includes all rebates.



Worldwide Yacht Sales | Yacht Charters | New Yacht Construction



1997 32' Maxum - \$30,000
Ed Pickering - 410.708.0633



1999 30' Pursuit - \$57,000
David Robinson - 410.310.8855



1999 29' Stamas - \$39,999
Michael Behot - 301.788.3576



1995 29' C-Hawk - \$42,500
Jason Hinsch - 410.507.1259



2000 29' Tiara Yachts - \$65,000
Michael Behot - 301.788.3576



2011 28' Mako - \$89,000
Anthony Sayo - 757.427.4042



2000 28' Bayliner - \$24,000
Anthony Sayo - 757.427.4042



1973 24' Stamas - \$50,000
Wayne Smith - 516.445.1932



2003 24' Wellcraft - \$18,000
Ed Pickering - 410.708.0633



1973 23' Chris-Craft - \$9,900
Michael Behot - 301.788.3576



2007 20' Cherubini - \$110,000
Jack Kelly - 609.517.2822



2003 20' Cherubini - \$39,900
Bill Boos - 410.200.9295

To see more details about these and all other yachts around the globe, please visit our website below.

Annapolis, MD • St. Michaels, MD • Delaware City, DE • Deltaville, VA • Woodbridge, VA
Telephone: 410.919.4900 • Email: info@curtisstokes.net

www.curtisstokes.net

Sassafras Harbor Marina Yacht Sales



888-221-5022

1 George Street, P.O. Box 68
Georgetown, MD

sassafrasharbormarina.com



56' Carver 564 Cockpit MY '02
T-Volvo Diesel, T&H Floors
\$249,000 Sale pending



39' Carver 396MY '03
T-Volvo Penta 8.1, Well kept
\$125,000



39' Silverton 392 MY '99
Roomy interior, nice condition!
\$89,900



37' Larson 370 Cabrio '07
T-Volvo 8.1 w/low hours
\$89,500



37' Sea Ray 370 Sedan '95
T-Merc. 7.4, Well maintained
\$49,500



35' Carver 350 Mariner '03
One level salon & galley!
\$75,000



33' Sea Ray 330 Sundancer '98
Meticulously kept!
\$44,900



Free winterization & storage!

32' Carver Mariner '87
T-Crusader w/low hrs.
\$18,900



30' Sea Ray Sundancer '89
Generator, new engines '14
\$23,500



28' Bayliner 2855 Ciera '01
MerCruiser 7.4, new O/D '19
\$20,500



28' Bayliner 285 '03
Merc. 350 Mag MPI
\$29,000



23' Crownline 236SC '16
Merc. 6.2 B-III Low hours!
\$56,000 w/trailer

42' Chris Craft 426 '86.....\$49,900 | 41' Hatteras Convertible '67.....\$57,500 | 28' Albin 28 TE '03.....Sale pending



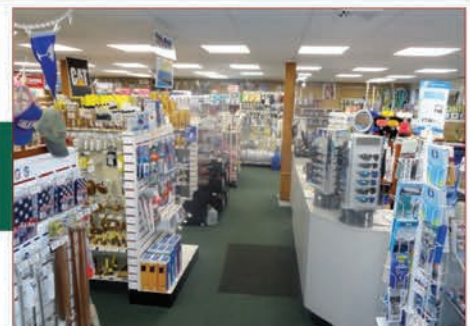
Sassafras Harbor Marine Store

SHOP LOCAL!

OPEN 7 DAYS A WEEK

The Heron's Nest

Gift Shop



Marina: 410-275-1144 ~ **Convenient Holiday Shopping** ~ Store: 410-275-2666

ANNAPOLIS CRUISAIR, INC.

Family Owned & Operated for Over 50 Years

SALES • SERVICE • INSTALLATION



U-LINE
U-Line Ice makers
110/115vAC

We will meet or beat
any competitive
price quote for
these products!

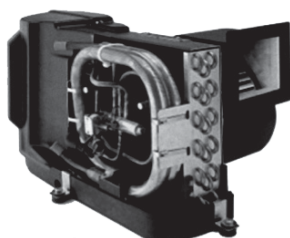


Marine Diesel
Heaters

Espar

Cruisair®

New Turbo
Air Conditioners • Heat Pumps



• We Have • BREATHE EASY AIR FILTERS

Sentry™
Cruisair

BATTERY
CHARGERS



SAFEST
CHARGER
ON THE
MARKET!

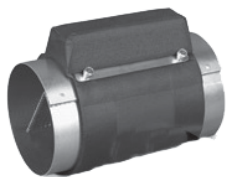
**Eskimo Ice
600 Ice Pump**

Provides up to 600 lbs. of fresh
ice in a day from your ships
water tank.



STINKY BOAT?

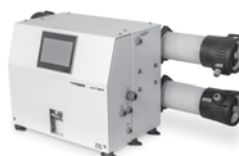
We Have **NEW**
Breathe Easy
Air Purifiers



➔ **DOMETIC**

SPOTZERO®
Fresh Water Reverse Osmosis

Water Purification Systems



Vitrifrigo
REFRIGERATORS

WAECO
Adler/Barbour®



MARINE AIR SYSTEMS®

AIRRRRRRRRR
by Dometic GROUP



KOHLER.

- Generators -

Onan



Fischer Panda

2124 Renard Ct. • Annapolis, MD

(410) 224-0970 • (410) 974-6136 • Fax (410) 224-0050

www.annapoliscruisair.com

New Dealer for:
SEA PRO
the next wave



208 Bay

CAROLINA SKIFF



23 Ultra

ALUMA
Craft



Powered by:

SUZUKI
MARINE

SEA CHASER
By: Carolina Skiff, Inc.



24 HFC

DANNY'S MARINE
(410) 228-0234 • www.dannysmarine.com
Located on US Rt 50 (mile marker 86) • Chateau Drive near Linkwood, MD
dannysmarine@comcast.net

Limited Time Offers. Not all models qualify. See Participating Suzuki Marine dealer for details or visit www.suzukimarine.com
©2018 Suzuki Motor of America, Inc.

Fishin' Boats From
Fishin' Folks

Holiday Savings!



\$159,900

2004 Grady-White 300 Marlin
Twin 2019 Yamaha XTO 425HP



\$89,900

2017 KEY WEST 244CC
Yamaha 300HP, Load-rite Bunk Trailer



\$29,500

2017 May-Craft 1900CC
Yamaha 115hp, Load-rite Trailer



\$21,500

1985 Grady-White 226 Seafarer WA
2009 Yamaha 250HP, 2014 Load-rite Trailer



\$24,500

2016 G3 20SC SHDW
Yamaha 90HP, Bear Galvanized Trailer



\$17,900

2008 AQUA PATIO 2500 RE
Honda 150HP, Load-rite Bunk Trailer

GOOTEE'S
MARINE


South of Cambridge On Maryland's Eastern Shore
1439 Hooper's Island Road, Church Creek, Maryland

May-Craft
The Perfect Craft for Your Sport

G3

KW
KEY WEST

800-792-0082
Gootees.com



**YOUR
ENJOYMENT
MADE EASY**

GEICO[®]
FOR YOUR BOAT

Get a GEICO quote for your boat and, in just 15 minutes, you'll know how much you could be saving. If you like what you hear, you can buy your policy right on the spot. Then let us do the rest while you enjoy your free time with peace of mind.

geico.com/boat | 1-800-865-4846

Some discounts, coverages, payment plans, and features are not available in all states, in all GEICO companies, or in all situations. Boat and PWC coverages are underwritten by GEICO Marine Insurance Company. In the state of CA, program provided through Boat Association Insurance Services, license #DH87086. GEICO is a registered service mark of Government Employees Insurance Company, Washington, DC 20076; a Berkshire Hathaway Inc. subsidiary. © 2020 GEICO 20_206641

CLARKS FLOATS

PIER & PILE

443-871-0436 • CLARKSFLOATS@GMAIL.COM

CLARKS FLOATS PIER & PILE

- Floating Docks
- Pile Driving
- Re-Decking

MMCLB #390 I



8x16 KAYAK DOCK



8x12 KAYAK ACCESS

**Any Custom
Size Float
Available!**



Kayak Floats
Dock Sections • Work Rafts
Swim Platforms • Gang Planks
SS Fasteners • #1 P.T. Lumber
Perma Float Floats
Composite Decking

Deale, MD



GOLDSBOROUGH'S MARINE



"Where Happiness Is Just A Boat Ride Away"

**HUNTING
SEASON
SPECIALS!**



Holiday Price \$14,595



2021 Lowe FM160 Tiller Package
Mercury 30ELHPT 4-stroke, Roughneck floor
upgrade, Lowe 1800-60 galvanized trailer
LIST PRICE \$14,995



Buy A
Mercury 2.5 MH
4-stroke
at \$699 and
Goldsborough's
will Donate
\$25.00 to
**Salvation Army
Red Kettle Program!**

Holiday Price \$21,195



2020 Lookout 18'
Yamaha 70ELPT 4-stroke,
EZ Loader aluminum trailer
LIST PRICE \$21,525

Goldsborough's Marine

709 W. Main St., Crisfield, Maryland
www.crisfield.com/gold

Ph.# 410-968-0852 • Email: merc71@verizon.net



**14-800 (800lbs)
Galvanized • \$900**

**Trailer
Blowout
Special!**



**16F1200WTS (1200lbs)
Galvanized • \$1,295**

ADVERTISERS INDEX

ALMARS.....	7	DANNY'S MARINE.....	11
ANCHOR BOATS.....	20	GEICO.....	12
ANNAPOLIS CRUISAIR.....	10	GOLDSBOROUGH'S MARINE.....	13
ATC AUTO/MARINE TRAINING.....	18	GOOTEE'S MARINE.....	11
BEACON LIGHT MARINA.....	6	RT 113 BOAT SALES.....	4
BOAT LIFTS UNLIMITED.....	14	RUDY MARINE.....	2
CLARKS FLOATS.....	13	SASSAFRAS.....	9
CLARKS LANDING.....	5	UPPER CHESAPEAKE YACHT SALES..	3
CURTIS STOKES.....	8, 15	WATERFRONT.....	19

THE LARGEST LOW PROFILE BOAT LIFT MANUFACTURER IN THE USA

**CALL
US FOR
YOUR LOCAL
DEALER!**



Choose The Right Boat Lift, Choose

- Low Profile Design • Low Maintenance • 2/5 Yr Warr.
- Outside Walkway • Galvanized Steel Construction
- Aluminum Cradles Available • Capacity 800-40,000 lbs.

MAGNUM

BOAT LIFTS

Personal Watercraft Lifts

www.magnumlift.com

Fully
Insured

BOAT LIFTS UNLIMITED

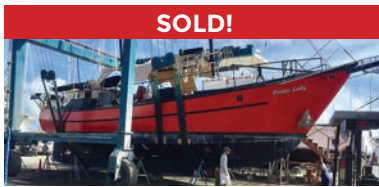
410-674-3100 • 1-800-268-5911

**WE SERVICE
MOST MAKES
OF BOAT
LIFTS!**

Located in Odenton, MD, this full-service boat lift manufacturer has a network of over 180 distributors serving the Chesapeake Bay, Great Lakes and Atlantic Coast with Magnum Boat Lifting Products. Boat Lifts Unlimited is dedicated to customer satisfaction through prompt, courteous service on most existing boat lifts and timely installation of new boat lifts. Quality materials, attention to detail and innovative design have made Boat Lifts Unlimited one of the largest boat lift manufacturers in the U.S.



Worldwide Yacht Sales | Yacht Charters | New Yacht Construction



SOLD!

72' Trade Rover



SOLD!

50' Chris-Craft



SOLD!

48' Evans Boats



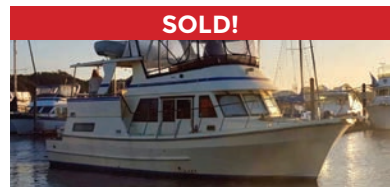
SOLD!

44' DeFever



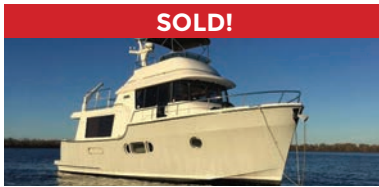
SOLD!

44' Gulfstar



SOLD!

42' Fu Hwa



SOLD!

40' Fathom



SOLD!

40' Hinckley



SOLD!

36' C&C



SOLD!

36' Bristol



SOLD!

32' Eagle



SOLD!

26' Sisu

List your boat with us and join our **SOLD list!**

To see more details about these and all other yachts around the globe, please visit our website below.

Annapolis, MD • St. Michaels, MD • Delaware City, DE • Deltaville, VA • Woodbridge, VA
Telephone: 410.919.4900 • Email: info@curtisstokes.net

www.curtisstokes.net

FREE LISTING WITH PHOTO ON THE INTERNET

PRIVATE AD RATES

- ☐ INTERNET ONLY UP TO 1 YEAR..... \$39⁰⁰
☐ 3 ISSUES NO PHOTO CLASSIFIED..... \$49⁰⁰
☐ 3 ISSUES WITH COLOR PHOTO
 WITH COLOR PHOTO ON INTERNET..... \$59⁰⁰
☐ INTERNET FEATURE ADD ON 4 WEEKS
 AVAILABLE WITH AD PURCHASE ONLY!
 ON THE SALTY DOG HOME PAGE \$49⁰⁰
☐ FRONT COVER..... \$40⁰⁰
☐ FACEBOOK FEATURE \$15⁰⁰
☐ PUBLICATION MAILED TO YOU..... \$3⁰⁰

TOTAL

FRONT COVERS ARE BASED ON AVAILABILITY

- ☐ CHECK ☐ MONEY ORDER ☐ DISCOVER
☐ MASTERCARD ☐ VISA ☐ AMERICAN EXPRESS

CC# _____

Expiration Date _____ Security Code _____

Advertiser's Name _____

Address _____

Phone _____

Where did you pickup "The Salty Dog"?

Store _____ Town _____

Fill out the description form below, up to 125 characters (including spaces & punctuation) of advertising. Please put one character per space beginning with the motor. Include a check, money order or credit card, and mail to us with a good quality COLOR photograph of your boat. Photos will only be returned if accompanied by a self-addressed stamped envelope.

AD COPY

FT. _____ YR. _____

MANUF. / MODEL _____

MOTOR _____

ACCESSORIES _____

LOCATION OF BOAT _____, _____ State _____ Zip Code _____

PRICE _____

PHONE # _____

EMAIL _____

Send to: The Salty Dog
254 Brick Blvd • Suite 1
Brick, NJ 08723

888-843-1585

Fax (732) 477-9000 • Email: info@thesaltydog.com

No refunds after Ad is processed. • Advertiser will be responsible for \$20 fee on returned checks.

YOUR BOAT LISTING CAN ALSO BE SUBMITTED ON THE INTERNET www.thesaltydog.com

SPECIAL FEATURES

PRIVATE BOAT ADS Pgs. 17-18

SUBSCRIPTION CHESAPEAKE BAY

SALTY DOG is published Bi-weekly 25 times a year.

Papers are mailed FIRST CLASS. Your first issue will be mailed within 1 week. To subscribe, just fill in the amount of issues and multiply by \$2.00*

No. of issues _____ x \$2.00* = Total Cost _____

☐ CHECK ☐ MONEY ORDER ☐ MASTERCARD ☐ VISA

Credit Card No. _____

Exp. Date _____

Signature _____

Name _____

Address _____

City _____ State _____ Zip _____

Telephone _____

*Canada Subscription Add 10% - Bermuda Subscription Add 30%
Outside the Continental USA Add 50% • Credit Cards Only Outside USA



Mail To: THE SALTY DOG, 254 Brick Blvd • Suite 1, Brick, NJ 08723



A Bi-weekly Publication for
Powerboats, Sailboats, Marine
Equipment, Supplies, Services,
Waterfront and Photo Ads

For More Info on Display Ads or Internet Listings

Call 888-843-1585 • Fax (732) 477-9000

info@thesaltydog.com • Mon.- Fri. 9:00 am to 4:00 pm

See Color Photo on the Internet

40' 2005 FORMULA 400 SUPER SPORT, T/Mer-cruiser 469 HO's, AC/HT, gen, electronics, 115 hours, \$159,995, 732-840-1100 sales@brennanboat.com 151771

See Color Photo on the Internet

31' 2016 FORMULA 310 BR, T/8.2L Merc Mag Big Blocks, Bill, 205 hours, joystick, \$170,000, 732-899-8010 sales@schraderyachts.com 151850

See Color Photo on the Internet

28' 2017 PURSUIT S280, T/Yamaha F300hp, 118 hours, electronics, lift kept, \$179,900, 609-368-1141 stoneharboryachts@gmail.com 151852

See Color Photo on the Internet

39' 2001 DONZI 39ZSC, 525 Mercury, Great Cruiser With All The Extras, (2) 525 H/P Mercury Gas Engines (1) Kohler Generator, Well Maintained Fresh Water Boat, \$95, 302-245-6910 ernie@hyettrefrigeration.com 151888

See Color Photo on the Internet

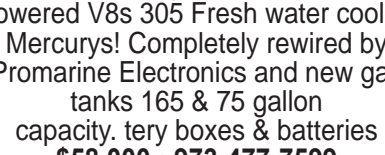
28' 1977 BERTRAM Moppie Open, Completely restored, Original Tuna Tower AIS Raymarine E80s Re-powered V8s 305 Fresh water cooled Mercurys! Completely rewired by Promarine Electronics and new gas tanks 165 & 75 gallon capacity. tery boxes & batteries \$58,000 • 973-477-7599 Mrodrick@wffafinet.com 151923

See Color Photo on the Internet

27' 2014 SAILFISH SAILFISH 275 DC, T/Mercury 200hp Verados, 117 hours, no bottom paint, \$105,995, 732-840-1100 sales@brennanboat.com 151854

See Color Photo on the Internet

37' 1997 SEA RAY Sundancer, New 8.1 Horizon fresh water cooled motors 65 hrs, new canvas back and windshield enclosure, full camper top, Very clean, \$55,000, 410-446-0667 Candlmauk@verizon.net 152005

See Color Photo on the Internet

30' 2004 MONTEREY 302, T/Volvos 5.0L, meticulously maintained, \$44,999, 888-221-5022 shmys@sassafrasharbormarina.com 142453

See Color Photo on the Internet

27' 2018 SEA RAY 270 SDX, Mercruiser 6.2L V8, Bill, 85 hours, lift kept, \$97,995, 732-840-1100 sales@brennanboat.com 151773

See Color Photo on the Internet

34' 2011 PURSUIT 345 OS, Twin 250hp Yamahas, radar, autopilot, gen, AC/HT, ready to fish, \$219,995, 732-840-1100 sales@brennanboat.com 149753

See Color Photo on the Internet

30' 2004 MONTEREY 302, T/Volvos 5.0L, meticulously maintained, \$44,999, 888-221-5022 shmys@sassafrasharbormarina.com 142453

See Color Photo on the Internet

25' 2018 GRADY-WHITE 257 FISHERMAN, CHRISTMAS SPECIAL!
T/F150 Yamahas, low hrs, 7/23 warr, factory opt, Garmin GPS radar, Icom 504 radio, ORs, fish inshore/offshore, family cruising, water skiing, like new, ride in Grady, Sea V2 hull, winterized & wrapped for 2021
\$118,000
Call 302-226-3734 or 302-218-9325 144975

See Color Photo on the Internet

33' 1999 FOUNTAIN 10M, T/502 fuel injected rebuilt in '19, TRS drives, Velvet drive trans, IMCO helm, external hyd steering, 80+ MPH, Myco trailer, \$29,900, 609-693-9423 tidesendmarina1@gmail.com 151683

See Color Photo on the Internet

29' 2018 MONTEREY 295 SPORT YACHT, 8.2L I/O, 160 hours, loaded, trailer, \$140,000 OBO, \$140,000, 917-817-5084 esproviero@googlemail.com 151848

See Color Photo on the Internet

32' 2019 PURSUIT OS325 OFFSHORE, T/300hp Yamaha 4-strokes, 150 hours, loaded with everything, like new, \$359,900, 609-368-1141 stoneharboryachts@gmail.com 152018

See Color Photo on the Internet

28' 2017 CHRIS CRAFT LAUNCH 28, T/Merc 6.2L 350hp, loaded, lift kept, \$180,000, 732-899-8010 sales@schraderyachts.com 151849

See Color Photo on the Internet

26' 2003 HYDRA-SPORTS 2600 VECTOR, excellent condition, ready to sell, \$34,950 OBO, 908-489-5098 151127

See Color Photo on the Internet

25' 2016 SEA RAY 250 SLX, Merc 8.2L, BIII, loaded, low hours, excellent condition, **\$82,500, 732-899-8010**
sales@schraderyachts.com 151851

See Color Photo on the Internet

23' 2002 TROPHY 2352 WA, 5.7L Merc I/O, marine head, baitwell, 2004 Tidewater tandem trailer, **\$14,900, 908-309-4016**
almarmarine1@gmail.com 150630

See Color Photo on the Internet

20' 1995 May-Craft, new Yamaha, **\$14,950, 908-489-5098**
151124

See Color Photo on the Internet

25' 2014 SEA RAY 250 SLX, Merc 350 MPI, BIII, bimini, covers, priced to sell, **\$54,995, 732-840-1100**
sales@brennanboat.com 151774

See Color Photo on the Internet

22' 1992 SHAMROCK CENTER CONSOLE, runs great, gas engine, **\$9,500, 908-489-5098** 151035

See Color Photo on the Internet

20' 2003 SUGAR SAND CALAIS, 210hp Sport Jet, runs great, 40 MPH, **\$7,295, 908-309-4016**
almarmarine1@gmail.com 152017

See Color Photo on the Internet

23' 2010 SEA RAY 230 SELECT, Merc 5.0L, 130 hours, **\$30,900, 732-899-8010** sales@schraderyachts.com 151775

See Color Photo on the Internet

21' 2001 PARKER 21 SPECIAL EDITION, 150hp Yamaha, 804 hours, VHF, FF, Garmin GPS, **\$26,000, 732-899-8010** sales@schraderyachts.com 152019

See Color Photo on the Internet

TOHATSU 150HP BFT 4-STROKE NEW, 5 YEAR WARRANTY!!! control and cables, tack & harness, key switch, water separator, aluminum prop, **\$13,600, 908-309-4016**
almarmarine1@gmail.com 150629

MARINE TECHNICIAN TRAINING**RIDE THE CREST**
to career success**ENROLL FOR TRAINING TO BECOME A PROFESSIONAL MARINE SERVICE TECHNICIAN**

Our in-depth program includes training in: Seamanship, AC & DC Electrical, ABYC Standards, Air Conditioning & Refrigeration, Mechanical Systems, Stern Drives/Transmissions, Computerized-Fuel Injected Inboard and Outboard Engines, Inboard, Outboard and I/O Systems, Electronic Diesel Engines (Cummins QSB 5.9 380 HP Common Rail Trainer), Fiberglass & Gelcoat Repair, Plumbing and Sanitation Systems.

Financial Aid for those who Qualify • Career Placement Assistance



CALL NOW

866-656-7794**www.autotraining.edu**

900 Johnsville Blvd., Warminster, PA 18974

Supported by



with Training Materials & Equipment

For required program disclosure information, please go to www.autotraining.edu/consumerinformation.



WATERFRONT MARINE

#1 GOLL AVE, SOMERS POINT, NJ ~ 609-926-1700

281 PRINCETON AVE, BRICK, NJ ~ "Featuring Chaparral & Carver" 732-202-6961

2822 SOLOMON'S ISLAND RD, EDGEWATER, MD ~ 443-949-9041

Premium Brands ~ Exceptional Service

WWW.WATERFRONTMARINE.COM



Robalo R302



Robalo R242



Chaparral 297SSX



Carver Yacht 34 Coupe

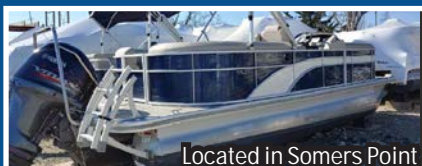


Q28



250 Suncoast

- PREOWNED BOATS -



Located in Somers Point

2018 Bennington 22SSRCXP Pontoon,
Yamaha F150 Vmax • \$44,900



Located in Somers Point

2016 Nauticstar 19 Deckboat,
Yamaha F115 4-stroke • \$27,900



Located in Somers Point

24' '13 Robalo R247DC,
Yamaha F300, electronics, \$59,900

BOWRIDERS & PONTOONS

28' '12 Chaparral 284 Sunesta, Volvo Penta 8.1L 400hp	Pending
28' '12 Chaparral 287 SSX, 8.2L	Pending
28' '15 Chaparral 287 SSX, Volvo Penta 430hp DP, loaded	Pending
27' '10 Chaparral 276 SSX Bowrider, Volvo Penta 8.1L 375 duo prop	\$49,900
26' '19 Chaparral 264 Sunesta, Volvo Penta 350 DP	\$94,900
26' '16 Four Winns H260	\$64,900
25' '06 Cobalt 250	Pending
24' '08 Cobalt 242 BR, Volvo Penta 5.0 GI 300hp, no bottom paint	\$29,900
24' '11 Chaparral 246 SSi, Volvo Penta 5.7L 300hp DP	Pending
24' '18 Chaparral 2430 VRX	\$68,900
24' '15 Chaparral 243 Vortex	\$49,900
23' '17 Stingray 234 LR, Yamaha F250 Vmax, 97 hours	\$49,900
23' '07 Monterey 234	Pending
22' '04 Chaparral 220 SSi, Volvo Penta 5.0L GXi, '09 Tidewater galv trl	\$22,900
22' '18 Bennington 22 SSRCXP Pontoon, Yamaha F150 Vmax	\$44,900
22' '11 Chaparral 224 Sunesta	Pending
22' '14 Bennington 2275 GCW, Yamaha F150, 2018 Load Rite trl	Pending
22' '06 Sea Ray 220	Pending
20' '11 Stingray 208 LR	Pending
20' '07 Cobalt Bowrider	Pending
19' '16 Nauticstar Deckboat, Yamaha F115 4-stroke	\$27,900

CRUISERS & CUDDY CABINS

38' '06 Cruisers Yachts 385 Motor Yacht	Pending
36' '11 Rinker 360 Cruiser	Pending
33' '12 Chaparral 330 Signaure	Pending
29' '00 Sea Ray 290 Sundancer, T/Mercruiser 5.7 EFI 260hp BIII	\$32,900
23' '88 Chaparral 235XLC, 5.7L Merc	\$7,900

FISHING BOATS

30' '00 Pursuit 3070 Offshore, T/2017 Evinrude 300hp G2 Etc	\$74,900
27' '19 Robalo R272, T/Yamaha F200, lift kept, trailer	\$126,500
25' '05 Parker 2520 Deep Vee SC, 2006 Yamaha F250, '05 EZ Loader	\$46,900
24' '18 Robalo 246 Cayman Center Console, Yamaha F300	\$76,900
24' '13 Robalo R247 DC	\$59,900
22' '18 Robalo R222 Explorer, Yamaha G200, indoor rack boat	\$58,900
22' '19 Robalo 226 Cayman Center Console, Yamaha F200, trailer	\$63,997
22' '18 Robalo R222 Center Console, F200 Yamaha, trailer	SOLD
20' '18 Robalo R200 Center Console, Yamaha F150, trailer	SOLD
20' '18 Robalo R202 Center Console, Yamaha F150, trailer	SOLD
20' '96 Trophy 2002 WA	\$8,900
19' '17 Yamaha 190 Center Console, High Output Jet, 70 hours	\$31,900
19' '15 May-Craft 1900 CC, Evinrude 115hp E-Tec, trailer	\$24,900



AUTHORIZED
PARTS &
SERVICE

MERCURY
MerCruiser



YAMAHA
When you want the best

VOLVO
PENTA



Full Service
Marina w/Slips &
Racks Available!



Large Indoor Showroom!
OPEN 7 DAYS A WEEK

410.287.8280 | 448 MAULDIN AVE | NORTH EAST, MD 21901



Parts & Service | General Boat Repairs | High & Dry Boat Storage

WWW.ANCHORBOAT.COM



YAMAHA BUILT TO LAST

