

Free!



The Salty Dog®



CHESAPEAKE BAY EDITION

Published Every Other Week • Distributed in Maryland, Delaware, Southern Pennsylvania and Virginia

POWERBOATS & SAILBOATS ...Including Marine Services



JEANNEAU
7.5 Leader CC

See us at the
**BAY BRIDGE
BOAT SHOW**
April 21-24 • Land Space C5 & C6
Largest Inventory of
In Stock Boats in the Region!
302-945-2254
www.RudyMarine.com



48' 1994 SEA RAY 440 SUNDANCER, T/3116 Cats, port 200 hours starboard 1600 hours, new Westerbeke generator, refrigerator, AC in salon, dingy, \$295,000, 410-608-1146, perryhallautotirecenter@verizon.net 154624



AVAILABLE NOW!
2022 COBIA 350 CENTER CONSOLE
Triple 300hp, \$Call • 302-436-1737
captain_glen@rt113boatsales.net

**List Your Boat
As Low As \$49!**
Go to www.thesaltydog.com
to get started!
Private Boat Ads Only



26' 2002 SEASWIRL STRIPER, 225hp Yamaha OX66, hardtop, head, stove, freshwater sink, live well, Garmin FF & GPS, marine radio, rocket launchers, RWWO, only 500 hrs, windlass anchor & roller trailer incl, \$32,900, 856-981-0325, jpollere@verizon.net 153878



(2) YAMAHA F300 SS PROPS, left and right, 15 1/4" X 19", BOTH \$700 OBO, 302-226-3734 154303



REDUCED \$42,900
2009 MONTEREY 254 FS BOWRIDER
BRAND NEW 5.7L Mercruiser 350 MPI engine, 1 year engine warranty, runs perfect, GPS, canvas, bimini, very roomy, huge swim platform, fresh bottom paint, 732-267-6822 • cp77@comcast.net



39' 2011 HUNTER MARINE, loaded family cruiser, radar, Axiom9, Icom AIS rec, ext. upgrades, 2 zone AC, bow thruster, solar, massive aft cabin, \$129,000, 443-994-9166, brian.paniccia@gmail.com 154439

Annapolis, MD • St. Michaels, MD
Deltaville, VA • Woodbridge, VA
Delaware City, DE

CONTACT US TODAY!
info@curtisstokes.net
410.919.4900

**CURTIS
STOKES**
& ASSOCIATES

www.curtisstokes.net

1-888-843-1585 • Private Boat Information on Page 18



410-784-7624

10551 Eldon Willing Rd
Chance, MD 21821

bobbykemp@scottscovemarina.com



TOHATSU

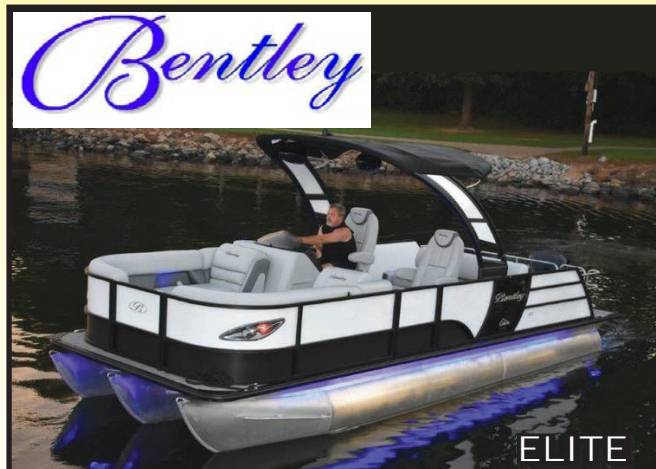


75HP

90HP

115HP

See us at the **BAY BRIDGE BOAT SHOW** April 21-24 • Land Space C5 & C6



REPOWER HEADQUARTERS

Conveniently
Located on
Rt 113



Delaware has
NO SALES TAX!

Near:
Fenwick Island
Bethany Beach
Ocean View
Ocean City, MD



302-945-2254 • 32606 DuPont Blvd Dagsboro, DE 19969

443-995-3785 • 3033 Kent Narrows Way South, Suite 3 Grasonville, MD 21638





WATERFRONT MARINE

#1 GOLL AVE, SOMERS POINT, NJ ~ 609-926-1700
 281 PRINCETON AVE, BRICK, NJ ~ 732-202-6961
 2822 SOLOMON'S ISLAND RD, EDGEWATER, MD ~ 443-949-9041

Premium Brands ~ Exceptional Service

WWW.WATERFRONTMARINE.COM

CONTENDER

Waterfront Marine is Proud to Now be the Authorized Dealer for Contender Boats in Delaware, Maryland & Virginia.

2022 Contender 44 ST

Factory Demo!
 Triple Yamaha 425 XTO's, electronics, Sea Keeper, loaded w/options & features, new warranties, Available for Immediate Delivery!
Call Today for Pricing!





AUTHORIZED PARTS & SERVICE



MERCURY
MerCruiser



YAMAHA
When you want the best

VOLVO PENTA



VALVETECT
MARINE FUEL

Full Service Marina w/Slips & Racks Available!

CALL TO RESERVE YOUR 2022 SLIP OR RACK SPOT

Best and Fastest

Access to the Bay

- 100+ Wet Slips
- 70+ Indoor Racks
- 50+ Outdoor Racks & Trailer Parking
- High Speed Wireless Internet at all Slips
- In/Out Service (call ahead)



PARISH CREEK LANDING
Marina • Boatyard • Boatel



"WE WANT TO BE YOUR BOAT'S HOME!"




CALL FOR OUR SPECIALS!

4819 Woods Wharf Road
Shady Side, MD 20764

410.867.4800

parishcreeklanding.com

YEAR ROUND

SLIPS • BOATEL SERVICE

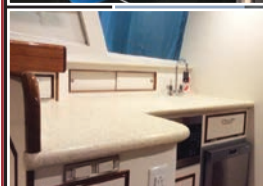
Direct Access to the Bay

Upper Chesapeake Yacht Sales

John Curry • (610) 299-3598
www.upperchesapeakeyachtsales.com



31' 2013
Bertram Custom
Sportfish
\$395,000



One of the absolute finest 31' Bertram re-manufactured boats built by renowned Worton Creek Marina. The hull is a 1963 rock solid Bertram that was meticulously restored in 2013 at a cost in excess of \$500,000 and has been kept in a covered shed since completion now having approximately 160 hours on her Yanmar diesels. This is a must see for the discriminating Buyer looking to purchase a great fishing and cruising vessel that may also be considered a maritime "work of art". Boat truly shows as new!



62' '03 Bruce Roberts Expedition Trawler, loaded and mint
PENDING



56' '03 Carver 564 CMY
T/674 Volvos, very nice
\$344,900



48' '05 Sea Ray Sundancer Hardtop
T/550hp Cummins, loaded
\$365,000



48' '70 Pacemaker CPMY,
T/Cummins, gen, all fiberglass, nice • \$24,900



38' '89 Sea Ray Aft Cabin,
T/7.4L, gen, AC, very nice
\$54,900



31' '98 Sea Ray Sundancer • V-Drives, repowered T/5.7L Mercs, very nice • \$44,900



29' '84 Dyer Soft Top Express • 200hp diesel, very nice • \$64,900



28' '74 Bertram FB
newer 315 Inboards, AC, clean • \$19,900



28' '78 Sabre Sloop,
Diesel, nice • \$10,000



26' '07 Bluefin Custom Sportfish CC • S/Diesel, tower, mint cond • \$64,900

39' '89 Sea Ray 390 Express, T/340hp Mercs, gen, AC, very nice condition Pending
27' '02 May-Craft Pilothouse, T/'06 200hp E-Tec, trailer, nice \$42,900
20' '15 Grady White Fisherman, 200hp 4-stroke, mint..... \$65,000



Expect The Same
Superior Service From Our
Brokerage That You Get
From Our Marina

BOAT SALES & BROKERAGE

• **Financing & Insurance Available •**

WORTON CREEK MARINA

23145 Buck Neck Road • Chestertown, MD 21620

(410) 778-3282

**Rt. 113 Boat Sales
and Service**



Selbyville, DE 302-436-1737
www.Rt113BoatSales.net

TAX FREE

YAMAHA

SAY YOU SAW THIS IN THE SALTY DOG!

f YouTube

**Cobia 330 DC
IN STOCK!**



**Cobia 220 DC
IN STOCK!**



Brokered Boats WANTED!

Clean, Late Models! up to 35 ft. LOW FEES • GREAT RESULTS!
HAUL OUT AND TRANSPORT SERVICES AVAILABLE



IN STOCK
Boat Trailers from 20' to 26'

Now is the Best Time to CASH OUT!

We handle Funding, Payoff, National MLS and
Transport-Delivery to Anywhere in the USA

**Get your Boat Sold FAST
and for Top Dollar!**

Clean late models, years 2005 and up
powered with Yamaha Outboard Motors

RT113BoatSales.net

CAROLINA SKIFF

23 Ultra



SEA CHASER
By: Carolina Skiff, Inc.

24 HFC



Powered by:



DANNY'S MARINE
(410) 228-0234 • www.dannysmarine.com
Located on US Rt 50 (mile marker 86) • Chateau Drive near Linkwood, MD
dannysmarine@comcast.net

Limited Time Offers. Not all models qualify. See Participating Suzuki Marine dealer for details or visit www.suzukimarine.com
©2020 Suzuki Motor of America, Inc.

**Fishin' Boats From
Fishin' Folks**

Spring Savings!

~~\$125,000~~



**2007 McKee Craft
Freedom 28CC**

**NEW PRICE!
\$115,000**

\$25,990



2005 Sea Boss 210 CC

\$25,900



2018 G3 18CC SHDW

\$19,995



2007 Alumacraft MV2072AW SC

\$34,500



1992 Boston Whaler 19 Outrage

**GOOTEE'S
MARINE**

South of Cambridge On Maryland's Eastern Shore
1439 Hooper's Island Road, Church Creek, Maryland

May-Craft
The Perfect Craft for Your Sport

G3 KEY WEST

800-792-0082
Gootees.com



Worldwide Yacht Sales | Yacht Charters | New Yacht Construction



1930 56' Jakobson & Robertson - \$215,000
Ed Pickering - 410.708.0633



1988 46' Jefferson - \$82,500
Mary Catherine Ciszewski - 804.815.8238



1999 40' Custom - \$149,000
David Robinson - 410.310.8855



2000 34' Little Harbor - \$175,000
Anthony Sayo - 757.427.4042



2004 34' American Tug - \$295,000
Curtis Stokes - 410.919.4900



1980 33' Bertram - \$45,000
David Robinson - 410.310.8855



2003 33' Wellcraft - \$75,000
Tristan Weiser - 609.420.0469



2015 30' Cutwater - \$219,000
Greg Merritt - 813.294.9288



2013 27' Cherubini - \$195,000
Jack Kelly - 609.517.2822



2005 27' Rinker - \$34,900
Wayne Smith - 516.445.1932



2007 20' Cherubini - \$95,000
Jack Kelly - 609.517.2822



1937 17' Chris-Craft - \$95,000
Tristan Weiser - 609.420.0469

To see more details about these and all other yachts around the globe, please visit our website below.

Annapolis, MD • Rock Hall, MD • St. Michaels, MD • Delaware City, DE • Deltaville, VA
Telephone: 410.919.4900 • Email: info@curtisstokes.net

www.curtisstokes.net

ALMARS

PLEASE CALL FOR UPDATES!
Motors Are Slowly Arriving!

We Are A Full Service, Premier Mercury Outboard
Repair Center! Let Our Certified Mercury Technicians
 Service Your Mercury Motor Needs!

NOW IN STOCK!

SEVERAL SMALL MOTORS 2.5HP - 150HP!

Call for Configuration & Compatibility!



2.5HP
3.5HP
4HP
5HP

6HP
8HP
9.9HP
15HP

20HP
25HP
50HP
60HP

75HP
115HP
150HP



THESE WILL GO FAST!

**CALL
 NOW TO
 ORDER
 YOUR
 4-STROKE!**



150
4-stroke
Black



150 ProXS
4-stroke
Black



175XL ProXS
4-stroke
Black



200
Sea Pro
Black



225XL
4-stroke
Black



250 XL
4-stroke
White

**100's of Used Cowllings
 In Stock!**
Call for Availability!

We Now Offer
INJECTOR SERVICE
 with ONE Day Turnaround

REMANUFACTURED OUTBOARD ENGINE SALE!

90hp - 250hp 1 Full Year Warranty

Starting As Low As \$5,495 Call for Details!

**CALL US
 FOR GREAT
 DEALS ON
 NON-CURRENT
 POWERHEADS!**

**Call us for current pricing new current
 and noncurrent outboards
 NO SALES TAX IN DELAWARE!**

701 Washington St., New Castle, DE

302-328-8541

www.almarsoutboards.net

HOURS: Monday - Friday: 8am - 5pm

**CALL FOR GREAT PRICING ON NEW
 & USED MERCURY OUTBOARDS**

NO HIDDEN COSTS
 NOT RESPONSIBLE FOR TYPOGRAPHICAL ERRORS

**All prices good
 while supplies last!**



Pricing includes all rebates.

HEROIC PERFORMANCE

SERVED IN 4 TANTALIZING FLAVORS

Engineered specifically for severe applications in a marine environment with the capability and durability to accommodate all your boating activities on a wide variety of vessels. The Raptor Series by Indmar offers superior craftsmanship in an exclusive line-up that defies every challenge, especially the test of time.



400



404 lb-ft of Torque
350 Horsepower



440



427 lb-ft of Torque
398 Horsepower



460



452 lb-ft of Torque
410 Horsepower



575



580 lb-ft of Torque
510 Horsepower

ENGINE
DISTRIBUTORS
INC. 

Indmar
MARINE ENGINES

800-220-2700 | www.edi-dist.com

RAPTOR
Indmar

MIDLANTIC
MARINE
CENTER
302-436-BOAT (2628)

Closed Sunday & Monday
Tuesday-Friday 8AM-4:30PM
Saturday 8AM-4PM

36624 DuPont Boulevard Selbyville, DE
www.midlanticmarinecenter.com

FISHING BOAT SPECIAL!

Starcraft & Wellcraft Fishing Boats In Stock Now!



2021 Wellcraft 162 Fisherman
 WEL05V • Yamaha F90LB 4-Stroke, trailer
 MSRP \$38,392 • Sale Price \$31,914



2021 Wellcraft 162 Fisherman
WEL06V • Yamaha F90LB 4-Stroke, trailer
 MSRP \$38,679 • Sale Price \$32,183



2022 Wellcraft 182 Fisherman
 Yamaha F115XB 4-stroke, trailer
 MSRP \$49,317 • Call for Price!



2022 Wellcraft 202 Fisherman
 Yamaha 150XB 4-stroke, trailer
New Arrival • Call for Price!



AVAILABLE NOW!
 2022 Starcraft Stealth 166SC ST37-W
 Yamaha F70LA 4-Stroke, with Trailer
 MSRP \$33,776 Call for Price!



2022 Starcraft Patriot 16 TiL ST19W
 Yamaha F25 4-Stroke Tiller, trailer
 MSRP \$18,692 • Call for Price!

New
STARCRAFT & Wellcraft®
 Inventory Arriving Weekly!



5 STAR
 TRAILERS

LOADRITE





READY? SET. BOAT!



BAY BRIDGE BOAT SHOW

APRIL 21-24, 2022 | STEVENSVILLE, MD

AnnapolisBoatShows.com

QUEEN ANNE'S
COUNTY Maryland


L'AVICTOIRE
FINANCE

M  A M
MARINE TRADES ASSOCIATION OF MARYLAND



PropTalk 

GOLDSBOROUGH'S MARINE



"Where Happiness Is Just A Boat Ride Away"

709 W. Main Street • Crisfield, Maryland
Ph.# 410-968-0852
Email: merc71@verizon.net
www.crisfield.com/gold



RX 1860 Tiller
w/Floorliner
Mercury 25hp MLH
4-stroke,
Lowe 1800-64 ST
galvanized trailer
freight, prep rigging
& test
\$16,590



C-Hawk 16' Tiller
Mercury 50hp
ELHPT tiller 4-stroke,
EZ Loader
galvanized trailer,
freight, prep rigging
& test
\$23,100



Lookout Skiff
18' Tiller
Mercury 60hp
ELHPT Tiller 4-stroke,
EZ Loader aluminum
trailer, freight,
prep rigging & test
\$24,990



Mercury 3.5.... MH	\$1,030
Mercury 4..... MH	\$1,375
Mercury 8..... MH	\$2,095
Mercury 9.9.... MH	\$2,295
Mercury 20.... MH	\$3,195
Mercury 20....ELH	\$3,495



MARINE TECHNICIAN TRAINING

RIDE THE CREST to CAREER SUCCESS



ENROLL FOR TRAINING TO BECOME A PROFESSIONAL MARINE SERVICE TECHNICIAN

Our in-depth program includes training in: Seamanship, AC & DC Electrical, ABYC Standards, Air Conditioning & Refrigeration, Mechanical Systems, Stern Drives/Transmissions, Computerized-Fuel Injected Inboard and Outboard Engines, Inboard, Outboard and I/O Systems, Electronic Diesel Engines (Cummins QSB 5.9 380 HP Common Rail Trainer), Fiberglass & Gelcoat Repair, Plumbing and Sanitation Systems.

Financial Aid for those who Qualify • Career Placement Assistance



CALL NOW **866-905-4278**

www.autotraining.edu

900 Johnsville Blvd., Warminster, PA 18974

Supported by



with Training Materials & Equipment

For required program disclosure information, please go to www.autotraining.edu/consumerinformation.

ANNAPOLIS CRUISAIR, INC.

Family Owned & Operated for Over 50 Years

SALES • SERVICE • INSTALLATION



U-LINE
U-Line Icemakers
110/115vAC

We will meet or beat
any competitive
price quote for
these products!

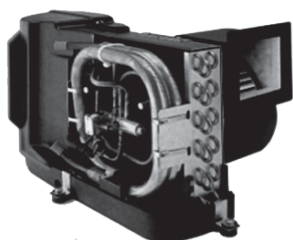


Marine Diesel
Heaters

Espar

Cruisair®

New Turbo
Air Conditioners • Heat Pumps



• We Have • BREATHE EASY AIR FILTERS

Sentry™
Cruisair

BATTERY
CHARGERS



SAFEST
CHARGER
ON THE
MARKET!

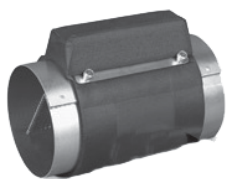
**Eskimo Ice
600 Ice Pump**

Provides up to 600 lbs. of fresh
ice in a day from your ships
water tank.



STINKY BOAT?

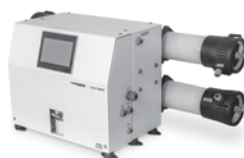
We Have **NEW**
Breathe Easy
Air Purifiers



➡ **DOMETIC**

SPOTZERO®
Fresh Water Reverse Osmosis

Water Purification Systems



Vitrifrigo
REFRIGERATORS

WAECO
Adler/Barbour®



MARINE AIR SYSTEMS®

AIRRRRRRRRR

by Dometic GROUP



KOHLER.

- Generators -



Fischer Panda

Onan

2124 Renard Ct. • Annapolis, MD

(410) 224-0970 • (410) 974-6136 • Fax (410) 224-0050

www.annapoliscruisair.com

Roughneck®

High performance RIB's



The Roughneck 1010 is in stock at Clarks! She is a maintenance free, luxurious, high quality, low draft, high-performance RIB. With her sleek lines & impressive award winning double stepped deep V hull design, the vessel reaches offshore-performance



IN STOCK!

competitors can't match with top speeds of over 77MPH with twin 350hp Mercury engines. The 33' Roughneck is a perfect day-boat with a large storage compartment in the console, an electric anchor & a refrigerator and bathroom option.

EXCITING NEWS!

Clarks Landing Yacht Sales is now **the official Northeast dealer for** Roughneck High Performance RIB's

CLARKS LANDING
YACHT SALES

CUTWATER
Factory
Direct Pricing



2022 24 Dual Console



2022 24 Center Walk



2022 24 Coupe



BENETEAU



Flyer 8 Sundeck



Flyer 9 Sundeck



41 Swift Trawler

New Dealer For

Wellcraft®



222 Fisherman



242 Fisherman



262 Fisherman

SOLD



2016 Ocean Yachts Bill Fish • \$599,000

SOLD



2017 Riviera 3600 Sport Yacht • \$429,900

WANT TO SELL YOUR BOAT FAST



A successful brokerage program starts with exposure. Due to our size, Clarks Landing can offer more exposure than most other brokers.

- ✓ Reduced Commissions
- ✓ Free Land Storage Program
- ✓ In House Marketing Team
- ✓ Family-Owned over 40 Years
- ✓ **Free Drone Media Package for Listings over \$75K**
Locations in NJ & MD

Get A Free Market Analysis

www.ClarksLanding.com

CLARKS LANDING
YACHT SALES
732-899-5559 • www.ClarksLanding.com

on the Manasquan River
847 Arnold Avenue
Point Pleasant, NJ



36-70 FT SLIPS AVAILABLE

FOR 2022 SEASON

ADVERTISERS INDEX

ALMARS.....	9	GOLDSBOROUGH'S MARINE	13
ANCHOR BOATS	24	GOOTEE'S MARINE	7
ANNAPOLIS CRUISAIR.....	14	J.J. BEST BANC & CO.....	21
ATC AUTO/MARINE TRAINING.....	13	LIST YOUR BOAT	18
BAY BRIDGE BOAT SHOW	12	MIDLANTIC MARINE CENTER	11
BOAT LIFTS UNLIMITED	16	PARISH CREEK LANDING	4
CLARKS LANDING	15	RT 113 BOAT SALES.....	6
CURTIS STOKES.....	8, 22	RUDY MARINE	3
DANNY'S MARINE.....	7	SCOTT'S COVE MARIA.....	2
ENGINE DISTRIBUTORS.....	10	UPPER CHESAPEAKE YACHT SALES ..	5
GEICO.....	17	WATERFRONT.....	4, 23

THE LARGEST LOW PROFILE BOAT LIFT MANUFACTURER IN THE USA

**CALL
US FOR
YOUR LOCAL
DEALER!**



Choose The Right Boat Lift, Choose

MAGNUM

BOAT LIFTS

Personal Watercraft Lifts

- Low Profile Design • Low Maintenance • 2/5 Yr Warr.
- Outside Walkway • Galvanized Steel Construction
- Aluminum Cradles Available • Capacity 800-40,000 lbs. www.magnumlift.com


Fully
Insured

BOAT LIFTS UNLIMITED

410-674-3100 • 1-800-268-5911

**WE SERVICE
MOST MAKES
OF BOAT
LIFTS!**

Located in Odenton, MD, this full-service boat lift manufacturer has a network of over 180 distributors serving the Chesapeake Bay, Great Lakes and Atlantic Coast with Magnum Boat Lifting Products. Boat Lifts Unlimited is dedicated to customer satisfaction through prompt, courteous service on most existing boat lifts and timely installation of new boat lifts. Quality materials, attention to detail and innovative design have made Boat Lifts Unlimited one of the largest boat lift manufacturers in the U.S.



**YOUR
ENJOYMENT
MADE EASY**

GEICO[®]
FOR YOUR BOAT

Get a GEICO quote for your boat and, in just 15 minutes, you'll know how much you could be saving. If you like what you hear, you can buy your policy right on the spot. Then let us do the rest while you enjoy your free time with peace of mind.

geico.com/boat | 1-800-865-4846

Some discounts, coverages, payment plans, and features are not available in all states, in all GEICO companies, or in all situations. Boat and PWC coverages are underwritten by GEICO Marine Insurance Company. In the state of CA, program provided through Boat Association Insurance Services, license #0H87086. GEICO is a registered service mark of Government Employees Insurance Company, Washington, DC 20076; a Berkshire Hathaway Inc. subsidiary. © 2020 GEICO 20_206641

FREE LISTING WITH PHOTO ON THE INTERNET

PRIVATE AD RATES

- ☐ INTERNET ONLY UP TO 1 YEAR..... \$39⁰⁰
☐ 3 ISSUES NO PHOTO CLASSIFIED..... \$49⁰⁰
☐ 3 ISSUES WITH COLOR PHOTO WITH COLOR PHOTO ON INTERNET..... \$59⁰⁰
☐ INTERNET FEATURE ADD ON 4 WEEKS AVAILABLE WITH AD PURCHASE ONLY! ON THE SALTY DOG HOME PAGE..... \$49⁰⁰
☐ FRONT COVER..... \$40⁰⁰
☐ FACEBOOK FEATURE..... \$15⁰⁰
☐ PUBLICATION MAILED TO YOU..... \$3⁰⁰

TOTAL

FRONT COVERS ARE BASED ON AVAILABILITY

- ☐ CHECK ☐ MONEY ORDER ☐ DISCOVER
☐ MASTERCARD ☐ VISA ☐ AMERICAN EXPRESS

CC#

Expiration Date _____ Security Code _____

Advertiser's Name _____

Address _____

Phone _____

Where did you pickup "The Salty Dog"?

Store _____

Town _____

Fill out the description form below, **up to 125 characters (including spaces & punctuation) of advertising**. Please put one character per space beginning with the motor. Include a check, money order or credit card, and mail to us with a good quality COLOR photograph of your boat. Photos will only be returned if accompanied by a self-addressed stamped envelope.

AD COPY

FT. _____ YR. _____

MANUF. / MODEL _____

MOTOR _____

ACCESSORIES _____

LOCATION OF BOAT _____, _____, _____
City State Zip Code

PRICE _____

PHONE # _____

EMAIL _____

Send to: The Salty Dog
254 Brick Blvd • Suite 1
Brick, NJ 08723

888-843-1585

Fax (732) 477-9000 • Email: info@thesaltydog.com

No refunds after Ad is processed. • Advertiser will be responsible for \$20 fee on returned checks.

YOUR BOAT LISTING CAN ALSO BE SUBMITTED ON THE INTERNET www.thesaltydog.com

SPECIAL FEATURES

PRIVATE BOAT ADS Pg. 19-20

SUBSCRIPTION CHESAPEAKE BAY

SALTY DOG is published Bi-weekly 25 times a year.

Papers are mailed **FIRST CLASS**. Your first issue will be mailed within 1 week. To subscribe, just fill in the amount of issues and multiply by \$2.00*

No. of issues _____ x \$2.00* = Total Cost _____

☐ CHECK ☐ MONEY ORDER ☐ MASTERCARD ☐ VISA

Credit Card No. _____

Exp. Date _____

Signature _____

Name _____

Address _____

City _____ State _____ Zip _____

Telephone _____

*Canada Subscription Add 10% - Bermuda Subscription Add 30%
 Outside the Continental USA Add 50% • Credit Cards Only Outside USA


Mail To: THE SALTY DOG, 254 Brick Blvd • Suite 1, Brick, NJ 08723


A Bi-weekly Publication for
 Powerboats, Sailboats, Marine
 Equipment, Supplies, Services,
 Waterfront and Photo Ads

For More Info on Display Ads or Internet Listings
Call 888-843-1585 • Fax (732) 477-9000
info@thesaltydog.com • Mon.- Fri. 9:00 am to 4:00 pm

See Color Photo on the Internet



41' 1988 AQUARIUS MOTOR YACHT,
Twin Caterpillar 3208TA
375HP Turbo
\$129,000
410-212-1539
jpmay@msn.com

154662

See Color Photo on the Internet



31' 1986 SHAMROCK Grand Slam, 7.4 Engine, Engine has 200 Hours or water time. The other was just rebuilt. Comes with Fishing Station, Fighting Chair, GPS, Radar etc., \$75,000, 717-423-6544 dwright09@embarqmail.com 154780

See Color Photo on the Internet



282 Mako 2006
28' 2006 MAKO 282, only 130 hours, \$20K in upgrades in 2021, 908-489-5098 154795

See Color Photo on the Internet



30' 2014 SEA HUNT 30 GAMEFISH, T/300hp Yamaha, 490 hours, \$149,500, 908-489-5098 154798

See Color Photo on the Internet



27' 2002 TRITON 2700 CC, T/F225hp OBs, 1620 hrs, excellent condition, clean, 1998 Load Rite trl, Garmin GPS/VHF, stereo, windlass, \$53,500, 732-929-1711 Tom@hobbylobbymarine.com 154751

See Color Photo on the Internet



37' 1967 CHRIS CRAFT Roamer, GM, Classic CC Roamer Riviera 6S - fully upgraded. T/454s (rblt/5 hours). Much new - motors, paint, 120V electric system, tanks, canvas, interior. more., \$39,500, 703-407-0329 alloyed2sea@yahoo.com 154777

See Color Photo on the Internet



29' 2018 SAILFISH 290 CC, T/300hp Yamahas, \$199,900, 631-327-0843 stoneharboryachts@gmail.com 154838

See Color Photo on the Internet



27' 2006 SEA RAY 270 SELECT EX, Mercruiser 6.2L, \$37,000, 732-899-8010 sales@schraderyachts.com 154690

See Color Photo on the Internet



36' 2002 SPECTRE CAT, Twin 500hp Mercruisers, low hours, extremely well kept, immaculate condition, trailer included, \$89,995, 732-864-6937 jeremypeters2002@gmail.com 153768

See Color Photo on the Internet



29' 2005 SEASWIRL 2901, Yamaha 4-strokes, only 480 hours, \$77,900, 908-489-5098 154796

See Color Photo on the Internet



27' 1992 SEA RAY weekender, 7.5 chevy, gps,depth finder low hrs 27ft weekender excellent condition, \$12,500, 609-693-3472 cjlav66@msn.com 154647

See Color Photo on the Internet



32' 2021 BOSTON WHALER 325 CONQUEST, T/300hp Mercury OBs, like new, \$499,900, 631-327-0843 stoneharboryachts@gmail.com 154521

See Color Photo on the Internet



28' 2005 GRADY-WHITE 282, Yamaha 4-stroke, \$69,500, 908-489-5098 154794

See Color Photo on the Internet



26' 2000 GRADY-WHITE 265, Yamaha 4-strokes, only 380 hours, \$69,500, 908-489-5098 154793

See Color Photo on the Internet



32' 2020 CAPE HORN 32XS, 175 hours, \$259,500, 908-489-5098 154799

See Color Photo on the Internet



28' 1990 SEA RAY 280 Sundancer, Twin Mercury V-6, VHF, Garmin GPS, DF, Fridge, Microwave, FW tank, 120 Gal fuel, Full Canvas, Clean and Dry Cabin, Marina Maintained, \$19,900, 908-309-4016 almarmarine1@gmail.com 154766

See Color Photo on the Internet



Steiger 25DV Miami
25' 2020 STEIGER CRAFT 25DV MIAMI, 150 hours mint, \$149,500, 908-489-5098 154790

See Color Photo on the Internet



25' 2014 BOSTON WHALER OUTRAGE 250, like new, \$139,000, 908-489-5098 154792

See Color Photo on the Internet



23' 2020 GRADY-WHITE 236 FISHERMAN, Yamaha 300, only 50 hours, \$149,500, 908-489-5098 154789

See Color Photo on the Internet



21' 2016 BENNINGTON 22SFXAPG,
Reduced. Great cond.
Yamaha 115 - 118.5 eng. hrs.
Lowrance HDS7 w/ struct. scan, saltwater pack, priv. encl., 2 livewells, 4 pedestal fish seats, Loadrite tandem galv. trailer
\$29,250
484-705-6720
richm@valleyrocksolutions.com

153739

See Color Photo on the Internet



25' 2019 SPORTSMAN 252 OPEN, Yamaha F300 UCA, 12" Garmin MFD w/radar, outriggers, windlass, livewell, underwater lights, \$119,900, 732-899-8010 sales@schraderyachts.com 154578

See Color Photo on the Internet



23' 2011 GRADY-WHITE Gulfstream, Twin 200 HP 4-stroke Yamaha, & EZ Loader - See Internet listing for more features! \$119,000, Ken 443-684-0896 TEXT ONLY, 301-563-9093 kenpglickman@gmail.com 154846

See Color Photo on the Internet



25' 2012 CHRIS CRAFT LAUNCH 25 HERITAGE EDITION, Mercruiser 8.2L, 460 hours, \$110,000, 732-899-8010 sales@schraderyachts.com 154835

See Color Photo on the Internet



23' 2005 GRADY-WHITE 232 GULFSTREAM, T/150hp Yamaha 4-strokes, \$69,900, 631-327-0843 stoneharboryachts@gmail.com 154837

See Color Photo on the Internet



25' 2009 MONTEREY 254 FS BOWRIDER, BRAND NEW 5.7L Mercruiser 350 MPI engine with 1 year warranty, runs perfect, GPS, canvas, bimini, very roomy, huge swim platform, fresh bottom paint, JUST REDUCED!!!!, \$42,900, 732-267-6822 cp77@fdevito@fdevitolaw.com 154850

See Color Photo on the Internet



23' 2005 STEIGER CRAFT Miami, Clean, Low hours, Covered slip when in water, Garmin echo map sv, JRC combo radar, Raytheon sounder, Standard radio, Trailer, \$50,000, 201-314-3932 fdevito@fdevitolaw.com 154850

See Color Photo on the Internet



20' 2003 SUGAR SAND SOLE, 240 EFI Mercury Sport Jet, VHF, GPS, bimini, 2020 trailer, runs great, \$9,599, 908-309-4016 almarmarine1@gmail.com 154834

See Color Photo on the Internet



25' 1998 SEA RAY 250 SUNDANCER, V8 4.2L Merc, Bili OD, 110/12V fridge, windlass, hot water heater, full canvas encl w/bimini, Garmin GPS/FF, Standard Horizon VHF & stereo, \$25,000, 732-899-8010 sales@schraderyachts.com 153691

See Color Photo on the Internet



22' 2004 SEA RAY 225 WEEKENDER, 5.0 mercury marine, Fresh water lake kept NO BOTTOM PAINT EXTRA CLEAN AND WELL MAINTAINED, BRAVO THREE OUT DRIVE REPLACED NEW 3 YEARS AGO MOTIVATED SELLER, \$24,995, 201-232-2025 keithscars15@gmail.com 154649

See Color Photo on the Internet



19' 2001 CHAPARRAL Sport ssi, 250 Volvo penta engine, clean condition, 240 hrs on engine 250 Volvo Penta engine, comes with Gator trailer, \$20,000, 443-856-8700 thyen1318@gmail.com 154701

See Color Photo on the Internet



25' 1994 GRADY-WHITE 251 DOLPHIN, clean, \$19,500, 908-489-5098 154791

See Color Photo on the Internet



21' 2015 CHAPARRAL H2O SPORT BOAT, 4.3L Merc I/O, 117 hours, \$29,500, 732-899-8010 sales@schraderyachts.com 154836

See Color Photo on the Internet



17' 2012 BOSTON WHALER Montauk, 2012 170 Boston Whaler Montauk fishing package with 90-hp Mercury 4-stroke., \$27,300, 717-994-7718 tylerbgilson@gmail.com 154933

WE WANT THIS. WE DESERVE THIS.
WE CAN DO THIS!

Find the Boat You Really Want & J.J. BEST will Help You
with Financing & Insurance.

Call to Pre-Qualify or Apply Online Today!



- * 100% FINANCING
- * 0 Down / Quick Turnaround
- * Very LOW RATES/LONG TERM Programs
- * No Prepayment Penalties.
- * Get Insurance too!

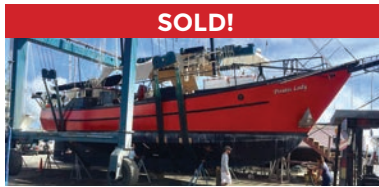
Pre-Qualify NOW & Get The Boat You Deserve!



JJBESTBOATLOANS.COM | 800.USA.1965
boats@jjbest.com



Worldwide Yacht Sales | Yacht Charters | New Yacht Construction



SOLD!

72' Trade Rover



SOLD!

50' Chris-Craft



SOLD!

48' Evans Boats



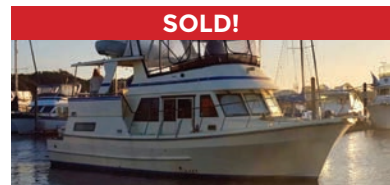
SOLD!

44' DeFever



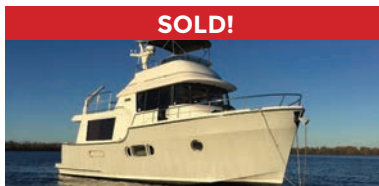
SOLD!

44' Gulfstar



SOLD!

42' Fu Hwa



SOLD!

40' Fathom



SOLD!

40' Hinckley



SOLD!

36' C&C



SOLD!

36' Bristol



SOLD!

32' Eagle



SOLD!

26' Sisu

List your boat with us and join our **SOLD** list!

To see more details about these and all other yachts around the globe, please visit our website below.

Annapolis, MD • St. Michaels, MD • Delaware City, DE • Deltaville, VA • Woodbridge, VA
Telephone: 410.919.4900 • Email: info@curtisstokes.net

www.curtisstokes.net



WATERFRONT MARINE

#1 GOLL AVE, SOMERS POINT, NJ ~ 609-926-1700

281 PRINCETON AVE, BRICK, NJ ~ "Featuring Chaparral & Carver" 732-202-6961

2822 SOLOMON'S ISLAND RD, EDGEWATER, MD ~ 443-949-9041

Premium Brands ~ Exceptional Service

WWW.WATERFRONTMARINE.COM

INBOUND BOATS AVAILABLE FOR FAST DELIVERY • CALL TODAY FOR DETAILS!



- PREOWNED BOATS -



Located in Somers Point

28' '21 Chaparral 280 OSX
T/Yamaha F200 motors
\$199,900



Located in Brick

2017 24' Crownline Eclipse E4
6.3L Merc, BIII, 221 hours
\$74,900



Located in Somers Point

22' '15 Robalo R222 CC
Yamaha F200
\$58,900

2022 Contender 44 ST



Factory Demo!

Triple Yamaha 425 XTO's, electronics,
Sea Keeper, loaded w/options &
features, new warranties,
Available for Immediate Delivery!
Call Today for Pricing!

BOWRIDERS & PONTOONS

32' '13 Chaparral 327 SSX, T/Volvo 320hp, Joystick	SOLD	21' '18 Chaparral 21 H2O Sport, 4.3L Merc MPI 220hp	SOLD
30' '15 Chaparral 307 SSX, T/350hp Mags	SOLD	21' '18 Monterey 218 Super Sport, 4.5 Merc 250hp	Pending
28' '21 Chaparral 280 OSX, T/Yamaha F200	\$199,900	19' '14 Chaparral 19 H2O Sport BR, Merc 4.3 MPI 220	Pending
28' '17 Chaparral 284 Sunesta, Volvo Penta 380 DP	Pending		
28' '12 Chaparral 284 Sunesta, Volvo Penta 8.1 400 DP	\$73,900		
27' '18 Crownline 275 SS Bowrider, Merc 8.2 Mag	SOLD		
26' '17 Crownline E6 XS Bowrider, Yamaha F300	\$84,900		
26' '08 Chaparral 264 Sunesta, Volvo Penta 8.1L DP	SOLD		
25' '20 Chaparral 257 SSX, Volvo Penta V8 350 DP	Pending		
25' '18 Chaparral 250 Suncoast, Yamaha F300	\$74,900		
24' '19 Chaparral 244 Sunesta, Volvo Penta 5.7L 300 DP	\$78,900		
24' '18 Chaparral 244 Sunesta	Pending		
23' '19 Bennington 23 SS BXP, tritoon	\$54,500		
23' '12 Sea Pro 239 DLX	Pending		
23' '20 Chaparral 23 SSI OB, Yamaha F250 VMax	\$74,900		
23' '16 Chaparral 230 Suncoast, Yamaha VF250	Pending		
22' '04 Sea Ray 220 Sundeck, Mercruiser 260hp	Pending		
22' '16 Chaparral 223 Vortex VRT Jet Boat	\$42,350		
21' '08 Polar 2100 DC, Yamaha F150, trailer	\$34,900		

CRUISERS & CUDDY CABINS

33' '12 Chaparral 330 Signeture, T/350hp Mags	\$159,900
27' '14 Chaparral 270 Signeture, Volvo Penta 5.7L 320 DP	SOLD

FISHING BOATS

27' '19 Robalo R272, T/Yamaha F200, lift kept, trailer	SOLD
24' '13 Edgewater 245 CC, Yamaha F300	\$89,900
24' '06 Robalo R245 WA Cuddy, T/Yamaha F150 OB	\$59,800
24' '17 Robalo R247, Yamaha F300	\$109,000
23' '21 Robalo R230 CC, Yamaha VF 250 w30 hours	Pending
22' '21 Robalo R227, Yamaha F200, rack stored	\$79,900
22' '15 Robalo R222 CC, Yamaha F200	\$58,900
22' '17 Tidewater 220 LFX CC, Yamaha F200	Pending
18' '18 Robalo R180, Yamaha F115, trailer	Pending



AUTHORIZED
PARTS &
SERVICE

MERCURY
MerCruiser



YAMAHA
When you want the best

VOLVO
PENTA



Full Service
Marina w/Slips &
Racks Available!

Build Slots Available

Order Your boat for Spring Delivery!

OPEN 7 DAYS A WEEK



**Need a Trailer?
We Have Them
In Stock!**

YAMAHA BUILT TO LAST

410.287.8280

ANCHOR
BOATS
North East, Maryland

www.AnchorBoat.com

448 MAULDIN AVE | NORTH EAST, MD 21901

Parts & Service
General Boat Repairs
High & Dry Boat Storage