

Free!



The

# Swamp Dog®



## CHESAPEAKE BAY EDITION

Published Every Other Week • Distributed in Maryland, Delaware, Southern Pennsylvania and Virginia

### POWERBOATS & SAILBOATS ...Including Marine Services

See our Large Selection of  
**JEANNEAU**  
at the DC Boat Show  
May 5-7 • National Harbor



NC 1095 FLY



LEADER 12.5 WA

**Rudy Marine.com**

Delaware has  
**NO SALES TAX!**  
3 GREAT LOCATIONS!

**302-945-2254**

32606 Dupont Blvd • Dagsboro, DE 19969

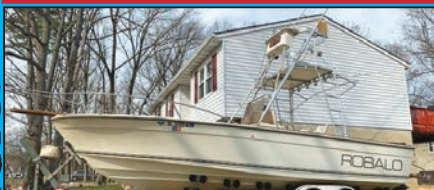
*SunChaser*

Eclipse

Largest Inventory of  
In Stock Pontoon in the Region!  
302-945-2254  
www.RudyMarine.com



41'5" 1999 BAYLINER 4087, original 77 hours on her. 3 staterooms, while the owner's aft cabin is surprisingly comfortable and includes a walkaround double berth, vanity, and a private head with separate stall shower, \$77,000, 410-474-2377, larryreich159@aol.com 158772



26' 1984 ROBALO 260 CC, T/Merc 200hp 2-stroke, Estate Sale, ONE OWNER BOAT, all original boat, EZ loader trailer full tuna tower with steer station, Rupp outriggers, extras, \$10,000, 443-790-8883, Watts1030@aol.com 158693



33' 1985 TROJAN 10M FB SEDAN, T/350 gas IB, gen, AC, island berth, salon w/sofa, dinette, hardtop, ORs, platform, elects, in water w/systems activated, ready to fish offshore or extended cruising, \$17,850, 443-553-3982, jmswoody@yahoo.com 158739



9' 2021 HIGHFIELD CL290 ORCA/CSM, Never registered or used, Purchased 9/21, Stored indoors, \$Call, 609-425-1356, Brockdrussell@gmail.com 158749

Annapolis, MD • St. Michaels, MD  
Deltaville, VA • Woodbridge, VA  
Delaware City, DE

**CONTACT US TODAY!**

info@curtisstokes.net  
410.919.4900

**CURTIS  
STOKES**  
& ASSOCIATES

www.curtisstokes.net

**1-888-843-1585 • Private Boat Information on Page 17**



410-784-7624

10551 Eldon Willing Rd

Chance, MD 21821

[bobbykemp@scottscovemarina.com](mailto:bobbykemp@scottscovemarina.com)



TOHATSU



75HP

90HP

115HP



# Upper Chesapeake Yacht Sales

**John Curry • (610) 299-3598**  
**www.upperchesapeakeyachtsales.com**



**350 MPI FWC Horizons, super clean and updated express cruiser with newer Bravo III outdrives, new electronics and low hour engines and gen set. Very nice cockpit vinyl makes this a "must see" for the express boat Buyer. Come take a look • \$69,900**



**56' '70 Custom Featherstone CC Ketch • gen, AC, loaded, nice • \$59,900**



**37' '05 Cruisers 370 Express, T/315hp Yanmar Dsls, gen, AC, new canvas, mint • \$159,900**



**35' '06 Bayliner 325 Express, T/260hp Bravo III, gen, AC, nice • \$59,900**



**33' '92 Sea Ray Sundancer T/5.7L Merc V-Drives, gen, AC \$25,900**



**33' '18 Regal BR, T/300hp Volvo, gen, AC, super clean, lift kept • \$229,900**



**32' '05 Sea Ray Sundancer, T/320hp Mercruiser V-Drive, gen, AC • \$89,900**



**26' '03 Crownline 262 CR 300hp • \$20,900**



**26' '86 Pacemaker FB Cruiser New 350hp Merc, very nice \$14,900**

<b>36' '85 Sea Ray Aft Cabin, T/260hp, gen, AC</b>	<b>\$19,900</b>
<b>34' '84 Silverton FB Convertible, T/270hp, gen, AC, very nice</b>	<b>\$19,900</b>
<b>27' '98 Mariah BR, 330hp Merc</b>	<b>\$11,900</b>
<b>26' '08 Bluefin Custom SF, 300hp Volvo Dsl, low hours</b>	<b>\$59,900</b>
<b>23' '01 Sea Fox WA, hardtop, 4.3 Mercruiser, numerous upgrades</b>	<b>Reduced \$11,900</b>



**Expect The Same Superior Service From Our Brokerage That You Get From Our Marina**

## BOAT SALES & BROKERAGE

**• Financing & Insurance Available •**

### WORTON CREEK MARINA

23145 Buck Neck Road • Chestertown, MD 21620  
**(410) 778-3282**

# CALL TO RESERVE YOUR 2023 SLIP OR RACK SPOT

## Best and Fastest Access to the Bay

- 100+ Wet Slips
- 70+ Rack Boatel
- 50+ Outdoor Racks
- Trailer Parking
- High Speed Wireless
- New Bathrooms w/Showers



PARISH CREEK  
LANDING  
Marina • Boatyard • Boatel

"WE WANT TO BE YOUR BOAT'S HOME!"

### CALL FOR OUR SPECIALS!

4819 Woods Wharf Road  
Shady Side, MD 20764

**410-867-4800**  
parishcreeklanding.com

YEAR ROUND  
**SLIPS • BOATEL  
SERVICE**

Direct Access to the Bay



Where Happiness Is Just A Boat Ride Away!

Ph.# 410-968-0852

709 W. Main St., Crisfield, Maryland

Email: merc71@verizon.net



Mercury 8MH.....	\$1,920	Mercury 50 ELPT.....	\$6,525
Mercury 9.9MH.....	\$2,145	Mercury 90 EXLPT.....	\$8,495
Mercury 15MH.....	\$2,475	Mercury 115 XL Pro Max.....	\$10,595
Mercury 20MLH.....	\$3,075	Mercury 150 XL Pro Max.....	\$13,200
Mercury 25MH.....	\$3,345		
<b>Mercury Standard Controls, Cable &amp; Aluminum Propeller Installation Package \$1,395</b>		<b>Yamaha Standard Controls, Cable &amp; Aluminum Propeller Propeller Installation Package \$1,395</b>	
<b>EZ Loader 68BT 14-17 1250 Galvanized \$1,795</b>		<b>Load Rite 1,700lbs Galvanized Bunk Trailer \$2,095</b>	
		<b>Trailer Blowout Special!</b>	

# Goldsborough's Marine



**CAROLINA  
SKIFF****23 Ultra****SEA  
CHASER**  
By: Carolina Skiff, Inc.**24 HFC****Powered by:**

**DANNY'S MARINE**  
**(410) 228-0234 • www.dannysmarine.com**  
 Located on US Rt 50 (mile marker 86) • Chateau Drive near Linkwood, MD  
**dannysmarine@comcast.net**

Limited Time Offers. Not all models qualify. See Participating Suzuki Marine dealer for details or visit [www.suzukimarine.com](http://www.suzukimarine.com)  
 ©2020 Suzuki Motor of America, Inc.

**Fishin' Boats From  
Fishin' Folks**

# SPRING SAVINGS!

**\$47,900**

**2018 Key West 203FS** - Yamaha  
F175 Engine, with trailer

**\$11,900**

**2001 Lowe 1960** - 50hp Yamaha,  
with trailer

**\$35,995**

**1998 Boston Whaler** - Center  
Console, 2016 Yamaha F200XB

**\$219,995**

**2022 Key West 263 FS** - Loaded,  
Twin Yamaha F300's - 85 hours, with  
trailer

**\$15,900**

**2013 G3 1966CC DLX** - 115hp  
Yamaha, with trailer

**\$139,900**

**2021 Key West Boats 263 FS**  
Twin Yamaha F200's, Loaded

## GOOTEE'S MARINE

South of Cambridge On Maryland's Eastern Shore  
 1439 Hooper's Island Road, Church Creek, Maryland

**May-Craft**  
The Perfect Craft for Your Sport

**G3**

**KW**  
KEY WEST

**800-792-0082**  
**Gootees.com**





**410-571-0045**

2830 Solomons Island Road  
Edgewater, MD 21037

ppmmarine@aol.com

**MERCURY**  
**MerCruiser**

## NEW MOTORS IN STOCK AND READY TO GO!



**MerCruiser  
350 Mag**



**MerCruiser  
383 FWC**

**\*Call for Pricing and Details on our Used Engines!**

### **Other Services Offered:**

*Marine Engine & Sterndrive Repair • Mercury Outboard Service, Optimax & Verado  
Dealer for Mercury, MerCruiser, Volvo Penta & Indmar*

**MARINE TECHNICIAN TRAINING**

**RIDE THE CREST**  
*to career success*



## ENROLL FOR TRAINING TO BECOME A PROFESSIONAL **MARINE SERVICE TECHNICIAN**

**Our in-depth program includes training in:** Seamanship, AC & DC Electrical, ABYC Standards, Air Conditioning & Refrigeration, Mechanical Systems, Stern Drives/Transmissions, Computerized-Fuel Injected Inboard and Outboard Engines, Inboard, Outboard and I/O Systems, Electronic Diesel Engines (*Cummins QSB 5.9 380 HP Common Rail Trainer*), Fiberglass & Gelcoat Repair, Plumbing and Sanitation Systems.

**Financial Aid for those who Qualify • Career Placement Assistance**



**CALL NOW**

**866-656-7794**

**www.autotraining.edu**

900 Johnsville Blvd., Warminster, PA 18974

Supported by



with Training Materials & Equipment

For required program disclosure information, please go to [www.autotraining.edu/consumerinformation](http://www.autotraining.edu/consumerinformation).



# RESERVE YOUR SLIP TODAY!

MARINE REPAIRS & MAINTENANCE  
STORAGE  
HAULING  
POOL ACCESS  
EVENTS  
LODGING

Call or E-mail:

410-758-2394

[info@kennersleypoint.com](mailto:info@kennersleypoint.com)



KENNERSLEY  
POINT MARINA

CHURCH HILL, MARYLAND 410-758-2394



**FIND YOUR  
NEXT BOAT  
or YACHT at**

**CurtisStokes.net**

**LOCAL BROKERS**

Worldwide Yacht Sales | Yacht Charters | New Yacht Construction

1.855.266.5676 | 410.919.4900 | [info@curtisstokes.net](mailto:info@curtisstokes.net)



# ALMARS

**PLEASE CALL FOR UPDATES!**  
Motors Are Slowly Arriving!

**We Are A Full Service, Premier Mercury Outboard Repair Center! Let Our Certified Mercury Technicians Service Your Mercury Motor Needs!**

**MOST CONFIGURATIONS  
IN STOCK NOW  
2.5HP-200HP!**

**Call for Compatibility  
and Complete Inventory!**



2.5HP  
3.5HP  
4HP  
5HP

6HP  
8HP  
9.9HP  
15HP

20HP  
25HP  
50HP  
60HP

75HP  
115HP  
150HP  
200HP



**THESE WILL GO FAST!**

**ATTENTION!**

**WE NOW HAVE A FEW 200'S**

**WE NOW HAVE A FEW V-10  
350'S**

**WE HAVE A FEW LEFTOVER  
VERADO L-6 350'S**

**Call now for Details!  
Limited Quantities!**

**CALL  
NOW TO  
ORDER  
YOUR  
4-STROKE!**



150  
4-stroke  
Black



150 ProXS  
4-stroke  
Black



175XL ProXS  
4-stroke  
Black



200  
Sea Pro  
Black



225XL  
4-stroke  
Black



250 XL  
4-stroke  
White

**100's of Used Cowllings  
In Stock!  
Call for Availability!**

**We Now Offer  
INJECTOR SERVICE  
with ONE Day Turnaround**

**REMANUFACTURED OUTBOARD ENGINE SALE!**

90hp - 250hp 1 Full Year Warranty

**Starting As Low As \$5,495 Call for Details!**

**CALL US  
FOR GREAT  
DEALS ON  
NON-CURRENT  
POWERHEADS!**

**CALL JACK FOR MOST  
CURRENT INVENTORY & PRICING!**

701 Washington St., New Castle, DE

**302-328-8541**

[www.almarsoutboards.net](http://www.almarsoutboards.net)

All prices good  
while supplies last!

HOURS: Monday - Friday: 8am - 5pm  
CALL FOR GREAT PRICING ON NEW  
& USED MERCURY OUTBOARDS

**NO HIDDEN COSTS**  
NOT RESPONSIBLE FOR TYPOGRAPHICAL ERRORS



Pricing includes all rebates.

# CLARKS LANDING

YACHT SALES

**Factory  
Direct  
Pricing**

## SOLARA

**Cutwater's  
New Premium  
Brand!**

**FREE SLIP WITH  
PURCHASE**  
*Call for Details*  
25 Centerwalk  
25 Dual Console  
25 Coupe



25 Centerwalk



25 Dual Console



25 Coupe



31 Centerwalk

# BENETEAU



**FREE SLIP  
WITH PURCHASE**  
*Call for Details*  
Flyer 8  
Flyer 9  
Flyer 10



Flyer 8 Spacedeck  
REBATE \$2,380



Flyer 9 Sundeck  
REBATE \$3,780



Flyer 10  
REBATE \$6,370

# Wellcraft®



202 & 222 Fisherman



242 Fisherman



262 Fisherman



355 Commuter

New  
Dealer For

# NIMBUS

**FREE SLIP  
WITH  
PURCHASE**  
*Call for Details*



Tender 11



Weekender 9

# CLARKS LANDING

YACHT SALES

on the Manasquan River  
847 Arnold Avenue  
Point Pleasant, NJ

**732-899-5559 • www.ClarksLanding.com**





# SEE US MAY 5<sup>TH</sup> - 7<sup>TH</sup> AT THE DC BOAT SHOW AT NATIONAL HARBOR!



JEANNEAU



*Bentley*



*SunChaser*



**YAMAHA**



LARGEST INVENTORY OF  
YAMAHA IN THE REGION!

Conveniently  
Located on  
Rt 113



Delaware has  
**NO SALES TAX!**

Near:  
**Fenwick Island  
Bethany Beach  
Ocean View  
Ocean City, MD**



302-945-2254 • 32606 DuPont Blvd Dagsboro, DE 19969

443-995-3785 • 3033 Kent Narrows Way South, Suite 3 Grasonville, MD 21638





# SAVE when you Sell ... and when you Buy

*boaters first*<sup>TM</sup>  
**yachtx.com**

The trusted alternative to high cost brokerage and the hassle & risks of FSBO, we make selling your boat easy, safe and produce better outcomes with professional advisors, Web transaction management, escrow and multi-platform marketing - all for just 1.5% or less.

Ask about our buyer representation rebate  
... and YachtX Rewards<sup>TM</sup> referral program.

boaters saving 85% in selling costs through yachtx.com



boaters receiving thousands in buyer rebates through yachtx.com



## 443.888.9190

"YachtX", "Boaters First", "YachtX Rewards" are trademarks of YachtX, Inc.





**MIDLANTIC  
MARINE  
CENTER**  
**302-436-BOAT (2628)**

**Closed Sunday & Monday**  
**Tuesday-Friday 8AM-4:30PM**  
**Saturday 8AM-4PM**  
**36624 DuPont Boulevard Selbyville, DE**  
**[www.midlanticmarinecenter.com](http://www.midlanticmarinecenter.com)**

# PRE-OWNED SPECIALS!



2011 Aqua Patio 220,  
Yamaha F150 4-stroke  
Selling for \$25,993



2000 Crest Family  
Fisherman 22, 2014 Yamaha  
F115 4-stroke • **Only \$13,995**



2015 Crest II 210 Pontoon,  
Mercury 90 4-stroke  
Only \$22,995



2007 Starcraft Limited  
**2000 OB** • Mercury 115 ELPT  
4-stroke • Selling for \$11,495



2019 Manitou Aurora 240LE,  
Evinrude 135 E-Tec with warranty  
Only \$29,989  
2022 Load Rite trailer  
available for add'l \$3,750



2022 Berkshire 24 CL LE  
Pontoon, Mercury 90 CT  
4-Stroke • **Only \$37,778**



2021 Sweetwater 2086,  
Suzuki DF70 4-stroke, 30 hours  
Only \$26,995



2022 Starcraft Stealth  
**166 SC** • Yamaha F70LA 4-stroke  
Selling for \$28,902



2016 Starcraft Limited  
1915 OB, Mercury 115hp  
4-stroke • **Only \$21,950**



2007 Starcraft Limited 1915  
OB, Mercury 115 Optimax, 2017  
5-Starr alum trailer • **Only \$15,690**



2019 Starweld 16 Fusion SC  
Pro, Mercury 90hp 4-stroke,  
with trailer • **Only \$21,950**



2016 Mahindra mPACT XTV  
750s, snow plow included  
Only \$9,965

We Are Also A Dealer For  
**STARCRAFT**  
Pontoon and Deck Boats



# ANNAPOLIS CRUISAIR, INC.

Family Owned & Operated for Over 50 Years

**SALES • SERVICE • INSTALLATION**



**U-LINE**  
U-Line Ice makers  
110/115vAC

We will  
meet or beat  
any competitive  
price quote for  
these products!

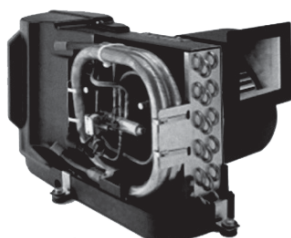


Marine Diesel  
Heaters

**Espar**

**Cruisair®**

New Turbo  
Air Conditioners • Heat Pumps



• We Have • BREATHE EASY AIR FILTERS

**Sentry™**  
*Cruisair*

BATTERY  
CHARGERS



SAFEST  
CHARGER  
ON THE  
MARKET!

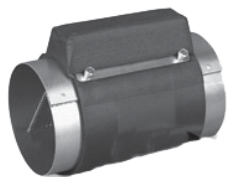
**Eskimo Ice  
600 Ice Pump**

Provides up to 600 lbs. of fresh  
ice in a day from your ship's  
water tank.



**STINKY BOAT?**

We Have **NEW**  
Breathe Easy  
Air Purifiers



➡ **DOMETIC**

**SPOTZERO®**  
Fresh Water Reverse Osmosis

**Water Purification Systems**



**Vitrifrigo**  
REFRIGERATORS

**WAECO**  
**Adler/Barbour®**



MARINE AIR SYSTEMS®  
**AIRRRRRRRRR**  
by Dometic GROUP



**KOHLER.**

- Generators -



**Fischer Panda**

**Onan**

2124 Renard Ct. • Annapolis, MD  
(410) 224-0970 • (410) 974-6136 • Fax (410) 224-0050  
[www.annapoliscruisair.com](http://www.annapoliscruisair.com)



# why get towing? | breakdowns happen



Breakdowns are unpredictable, make them less stressful with an Unlimited Towing Membership from TowBoatU.S. You can relax, we've got your back.



**BoatU.S.**

**JOIN TODAY!**  
**BoatUS.com/Towing**

Details of services provided can be found online at BoatUS.com/Agree. TowBoatU.S. is not a rescue service. In an emergency situation, you must contact the Coast Guard or a government agency immediately.

# ADVERTISERS INDEX

ALMARS.....	9	J.J. BEST BANC & CO.....	22
ANCHOR BOATS.....	24	KENNERSLEY POINT MARINA.....	7
ANNAPOLIS CRUISAIR.....	14	MIDLANTIC MARINE CENTER.....	13
ATC AUTO/MARINE TRAINING.....	6	PARISH CREEK LANDING.....	4
BOAT LIFTS UNLIMITED.....	16	PERSIMMON POINT.....	6
BOAT US.....	15	RUDY MARINE.....	11
CLARKS LANDING.....	10	SCOTT'S COVE MARINA.....	2
CURTIS STOKES.....	8, 21	UPPER CHESAPEAKE YACHT SALES..	3
DANNY'S MARINE.....	5	UTSCH'S YACHT SALES.....	20
GOLDSBOROUGH'S MARINE.....	4	WATERFRONT.....	23
GOOTEE'S MARINE.....	5	YACHTX.....	12

## THE LARGEST LOW PROFILE BOAT LIFT MANUFACTURER IN THE USA

**CALL  
US FOR  
YOUR LOCAL  
DEALER!**



### Choose The Right Boat Lift, Choose

- Low Profile Design • Low Maintenance • 2/5 Yr Warr.
- Outside Walkway • Galvanized Steel Construction
- Aluminum Cradles Available • Capacity 800-40,000 lbs. [www.magnumlift.com](http://www.magnumlift.com)

**MAGNUM**  
**BOAT LIFTS**  
Personal Watercraft Lifts

Fully  
Insured

**BOAT LIFTS UNLIMITED**  
**410-674-3100 • 1-800-268-5911**

**WE SERVICE  
MOST MAKES  
OF BOAT  
LIFTS!**

Located in Odenton, MD, this full-service boat lift manufacturer has a network of over 180 distributors serving the Chesapeake Bay, Great Lakes and Atlantic Coast with Magnum Boat Lifting Products. Boat Lifts Unlimited is dedicated to customer satisfaction through prompt, courteous service on most existing boat lifts and timely installation of new boat lifts. Quality materials, attention to detail and innovative design have made Boat Lifts Unlimited one of the largest boat lift manufacturers in the U.S.



# FREE LISTING WITH PHOTO ON THE INTERNET

## PRIVATE AD RATES

- ☐ INTERNET ONLY UP TO 1 YEAR..... \$49<sup>00</sup>  
☐ 3 ISSUES NO PHOTO CLASSIFIED..... \$59<sup>00</sup>  
☐ 3 ISSUES WITH COLOR PHOTO  
 WITH COLOR PHOTO ON INTERNET..... \$69<sup>00</sup>  
☐ INTERNET FEATURE ADD ON 4 WEEKS  
**AVAILABLE WITH AD PURCHASE ONLY!**  
 ON THE SALTY DOG HOME PAGE..... \$49<sup>00</sup>  
☐ FRONT COVER..... \$40<sup>00</sup>  
☐ FACEBOOK FEATURE..... \$15<sup>00</sup>  
☐ PUBLICATION MAILED TO YOU..... \$2<sup>00</sup>

## TOTAL

### FRONT COVERS ARE BASED ON AVAILABILITY

- ☐ CHECK    ☐ MONEY ORDER    ☐ DISCOVER  
☐ MASTERCARD    ☐ VISA    ☐ AMERICAN EXPRESS

CC#

Expiration Date \_\_\_\_\_ Security Code \_\_\_\_\_

Advertiser's Name .....

Address .....

Phone .....

Where did you pickup "The Salty Dog"?

Store \_\_\_\_\_ Town \_\_\_\_\_

Fill out the description form below, **up to 125 characters (including spaces & punctuation) of advertising**. Please put one character per space beginning with the motor. Include a check, money order or credit card, and mail to us with a good quality COLOR photograph of your boat. Photos will only be returned if accompanied by a self-addressed stamped envelope.

## AD COPY

FT. \_\_\_\_\_ YR. \_\_\_\_\_

MANUF. / MODEL \_\_\_\_\_

MOTOR \_\_\_\_\_

ACCESSORIES \_\_\_\_\_

LOCATION OF BOAT \_\_\_\_\_, \_\_\_\_\_ State \_\_\_\_\_ Zip Code \_\_\_\_\_

PRICE \_\_\_\_\_

PHONE # \_\_\_\_\_

EMAIL \_\_\_\_\_

**Send to: The Salty Dog**  
**254 Brick Blvd • Suite 1**  
**Brick, NJ 08723**

# 888-843-1585

Fax (732) 477-9000 • Email: [info@thesaltydog.com](mailto:info@thesaltydog.com)

No refunds after Ad is processed. • Advertiser will be responsible for \$20 fee on returned checks.

**YOUR BOAT LISTING CAN ALSO BE SUBMITTED ON THE INTERNET [www.thesaltydog.com](http://www.thesaltydog.com)**

## SPECIAL FEATURES

PRIVATE BOAT ADS .....Pg. 18-19

## SUBSCRIPTION CHESAPEAKE BAY

SALTY DOG is published Bi-weekly 25 times a year.

Papers are mailed **FIRST CLASS**. Your first issue will be mailed within 1 week.

To subscribe, just fill in the amount of issues and multiply by \$2.00\*

No. of issues \_\_\_\_\_ x \$2.00\* = Total Cost \_\_\_\_\_

☐ CHECK    ☐ MONEY ORDER    ☐ MASTERCARD    ☐ VISA

Credit Card No. \_\_\_\_\_

Exp. Date \_\_\_\_\_

Signature \_\_\_\_\_

Name \_\_\_\_\_

Address \_\_\_\_\_

City \_\_\_\_\_ State \_\_\_\_\_ Zip \_\_\_\_\_

Telephone \_\_\_\_\_

\*Canada Subscription Add 10% - Bermuda Subscription Add 30%  
 Outside the Continental USA Add 50% • Credit Cards Only Outside USA



Mail To: THE SALTY DOG, 254 Brick Blvd • Suite 1, Brick, NJ 08723



A Bi-weekly Publication for  
 Powerboats, Sailboats, Marine  
 Equipment, Supplies, Services,  
 Waterfront and Photo Ads

For More Info on Display Ads or Internet Listings

Call 888-843-1585 • Fax (732) 477-9000

[info@thesaltydog.com](mailto:info@thesaltydog.com) • Mon.- Fri. 9:00 am to 4:00 pm

**See Color Photo on the Internet**

**46' 2002 AZIMUT FLYBRIDGE**, T/Cat 3126B 450hp Dsls, Raymarine elects, new: Fusion stereo, bow sunpads, cushions, Axiom displays, rebuilt turbos, batts, **\$269,000**, 609-693-9423 [tidesendmarina1@gmail.com](mailto:tidesendmarina1@gmail.com) 158754

**See Color Photo on the Internet**

**30' 2018 WELLCRAFT SCARAB 302**, T/Mercury Verado 400Rs, 255 hours, Triple Black, loaded w/electronics & sound system, never fished, lift kept! , **\$189,900 OBO**, 917-817-5084 [info@deepwaterlanding.com](mailto:info@deepwaterlanding.com) 1587631

**See Color Photo on the Internet**

**28' 2004 GRADY-WHITE 283 RELEASE**, T/225hp Yamaha 4-strokes (exhaust kits done), elects, head, loaded, **\$74,900**, 917-817-5084 [info@deepwaterlanding.com](mailto:info@deepwaterlanding.com) 158666

**See Color Photo on the Internet**

**43' 2017 Everglades Boats 435 CC**, Quad 300hp Yamaha 4-strokes, full tower, loaded w/electronics, well maint'd, **\$499,000**, 631-327-0843 [stoneharboryachts@gmail.com](mailto:stoneharboryachts@gmail.com) 158335

**See Color Photo on the Internet**

**30' 1981 TROJAN F30**, Chrysler 318 (2), 400 hours on repower, A/C and heat, GPS, depth/fish finder, radar, VHF, sleep 6, micro, stove/oven. Bimini damaged in storm, **\$11,900**, 609-410-2470 [vspmail@comcast.net](mailto:vspmail@comcast.net) 158765

**See Color Photo on the Internet**

**28' 2006 SEA RAY 280 SUNDANCER**, T/4.3L Mercs, full cover, camper cover, sleeps 6, full head & galley, Asking **\$49,900 OBO**, **\$48,900**, 917-817-5084 [info@deepwaterlanding.com](mailto:info@deepwaterlanding.com) 1587632

**See Color Photo on the Internet**

**40' 2007 FORMULA 400 SS**, under 300 orig hrs on its T/ DIESEL Volvo Penta D6-350s - extremely clean, very rare, factory hardtop, tons up upgrades, **\$264,000**, 609-693-9423 [tidesendmarina1@gmail.com](mailto:tidesendmarina1@gmail.com) 158755

**See Color Photo on the Internet**

**29' 2007 Everglades Boats 29 CENTER CONSOLE**, T/Honda 225hp 4-stroke, new OEM blacks replaced in '22, 650 hrs, CP, FF, GPS w/radar, lean bar w/T-Tab, windlass, head, hard, **609-927-5900** [robert@somerspointmarina.com](mailto:robert@somerspointmarina.com) 158415

**See Color Photo on the Internet**

**27' 2019 CHRIS CRAFT CATALINA 27 HERITAGE**, Trim Edition, T/Yamaha F200hp, approx 245 hrs, Blue Crystal Metallic hull, **\$195,000**, 732-899-8010 [sales@schraderyachts.com](mailto:sales@schraderyachts.com) 158413

**See Color Photo on the Internet**

**38' 2006 SEA RAY 38 SUNDANCER**, Twin 8.1S Mercruiser 370 I/O, 320 hours, Kohler gen, side power bow thruster, **\$199,000**, 732-899-8010 [sales@schraderyachts.com](mailto:sales@schraderyachts.com) 157963

**See Color Photo on the Internet**

**28' 2019 GRADY-WHITE 285** fully loaded, sunshade, joystick & more, perfect condition! • **\$249,800**, 908-489-5098 158168

**See Color Photo on the Internet**

**27' 2018 SEA CHASER CC**, T/200hp Suzukis, lift kept (no bottom paint), loaded, 125 hours, **\$109,900**, 917-817-5084 [info@deepwaterlanding.com](mailto:info@deepwaterlanding.com) 158169

**See Color Photo on the Internet**

**33' 2003 RINKER Fiesta Vee 290**, She has twin Merc 5.0 MPI's with Alpha 1 Gen 2 I/O's. New Dometic AC/Heater, new power head, Well maintained, **\$45,000 OBO**, 732-979-6968 [nbpd594@aol.com](mailto:nbpd594@aol.com) 158673

**See Color Photo on the Internet**

**28' 2021 Tidewater ADVENTURE CC**, T/Yamaha F250, approx 62 hrs, Joystick, 1 Garmin 10" XHD radar, structure scan, ORs, windlass, **\$204,900**, 732-899-8010 [sales@schraderyachts.com](mailto:sales@schraderyachts.com) 158170

**See Color Photo on the Internet**

**27' 2017 DEFIANCE 270 ADMIRAL**, T/Honda 225hp, 235 hrs, t-tabs, cooler boxes/livewells, rocket launchers, RWW/D, ORs, elects, **917-817-5084** [info@deepwaterlanding.com](mailto:info@deepwaterlanding.com) 158665

**See Color Photo on the Internet**

**30' 2018 CHRIS CRAFT 30 HERITAGE EDITION**, T/ Merc Seacore V8 6.2L 350hp, low hours, **\$199,900**, 732-899-8010 [sales@schraderyachts.com](mailto:sales@schraderyachts.com) 158758

**See Color Photo on the Internet**

**28' 2014 CHRIS CRAFT 28 LAUNCH**, T/Mercruiser 350 Mag DTS, FWC, 285 hours, Midnight Blue hull, **\$149,000**, 732-899-8010 [sales@schraderyachts.com](mailto:sales@schraderyachts.com) 158414

**See Color Photo on the Internet**

**26' 2012 CHAPARRAL 264 SUNESTA**, Merc 350 Mag, sporty & functional, vacuflush head & sink, manifolds & risers recently installed, brand new trailer, **\$55,000**, 609-693-9423 [tidesendmarina1@gmail.com](mailto:tidesendmarina1@gmail.com) 158756



## See Color Photo on the Internet



**25' 2007 PARKER 2501 DEEP V**, T/Yamaha F150, Garmin elects, Taco ORs, Load Rite D/A trailer, **\$73,000, 732-899-8010 sales@schraderyachts.com 158757**

## See Color Photo on the Internet



**23' 2008 SUGAR SAND OASIS AIRWAVE**, 250hp Opti Jet Drive, tower, bimini, snap in carpet, table, full cover, new wear ring & SS impeller (21), 280 hrs, fast boat, **\$15,995, 908-309-4016 almaraine1@gmail.com 156290**

## See Color Photo on the Internet



**20' 2008 SEA DOO SPEEDSTER 200**, Sea Doo / BRP, 2008 Sea Doo twin engine jet boat, 430 hp, lake tested, very fast trailer incl, **\$10,000 405-477-4952 rogertate400@yahoo.com 158659**

## See Color Photo on the Internet



**25' 2008 CHAPARRAL 256 SSI**, Volvo I/O, new transom assembly, 165 original hours, ready to go! MAKE OFFER!, **\$33,900, 917-817-5084 info@deepwaterlanding.com 155615**

## See Color Photo on the Internet



**23' 2001 CONTENDER CC**, New T/Honda 150IST w/5yr warr, new: steering, Garmin w/18" radar, interior, paint, stereo/speakers, Eisenglass, trl, turn key, **917-817-5084 info@deepwaterlanding.com 158664**

## See Color Photo on the Internet



**18' 2001 BOW RIDER BOWRIDER**, Merc 4.3L V6, new manifolds & risers, new thermostat, runs great, **\$9,000, 908-868-6026 reeldeelusa@verizon.net 158718**

## See Color Photo on the Internet



**24' 2001 WELLCRAFT CUDDY CABIN**, repowered in '16 with a Honda BF250AXA 4-stroke OB, only 473 hrs on motor, Garmin elects, trailer, **609-927-5900 robert@somerspointmarina.com 158690**

## See Color Photo on the Internet



**22' 2016 BOSTON WHALER 220 OUTRAGE VERY RARE**, T/150hp Mercury Verados, 157 hrs, dual Raymarine screens, loaded, head, t-top, good elects, trailer, one owner, **\$112,900, 917-817-5084 info@deepwaterlanding.com 156842**

## See Color Photo on the Internet



**16' 2016 Crestliner 1650 DISCOVERY**, side console, Mercury 50hp, 3 batteries, full cover, FF, trolling motor, 37 hours, like new, **\$15,900, 908-309-4016 almaraine1@gmail.com 154951**

## See Color Photo on the Internet



**23' 2022 AQUASPORT 2300**, DF300AP Suzuki 300hp, 2022 aquasport 2300 center console with only 46 hrs of run time. Fresh and raw water. stereo with sub and amp. 12" simrad, **\$90,000, 410-810-1616 jiracing29@yahoo.com 158752**

## See Color Photo on the Internet



**22' 2015 BENNINGTON SX22**, New, Bennington SX22 Pontoon (saltwater Performance Package) w/ NEW 2022 Yamaha Vmax 115hp (5hrs) \$39,900 obo Excellent Condition, **\$38,900, 410-409-2697 jld5960@msn.com 156814**

## See Color Photo on the Internet



**2016 SEA DOO GTX 155 PAIR**, 27 hours/36 hours, one owner, prof maint'd, covers, light use, lift available for sale!, **\$17,000, 917-817-5084 info@deepwaterlanding.com 156843**

## See Color Photo on the Internet



**23' 2001 CONTENDER CENTER CONSOLE**, New T/Honda 150 IST w/5 year warranty, NEW: steering, Garmin w/18" radar, interior, paint, stereo/speakers, Eisenglass, w/trl, **\$84,500, 917-817-5084 info@deepwaterlanding.com 158131**

## See Color Photo on the Internet



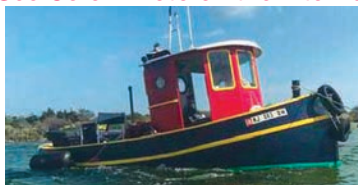
**21' 1976 BOSTON WHALER OUTRAGE**, 1996 150hp Johnson Ocean Runner, professionally restored, turn key, ready to go!, **\$19,500, 732-270-0022 nelsonmarinebasin@comcast.net 157989**

## See Color Photo on the Internet



**23' 2012 PARKER 23SE**, Yamaha, Parker, 2012, 23SE, CC, low hours, exec condition, boatel kept, original owner, extras, **\$46,000, 301-651-9704 nealcohen@comcast.net 158668**

## See Color Photo on the Internet



**20' 1983 CUSTOM BUILT MINI TUGBOAT**, 20hp Diesel Yanmar, keep cooled, dry stack exhaust, includes trailer, in water, **JUST REDUCED! \$10,999, 609-519-3583 harbarnj@yahoo.com 157105**



Whistle Yacht Services

Let me know what kind of boat you have  
Happy to take a look and make an offer  
Send a message or call  
410-570-9150  
cnc.ryanb@gmail.com



Since  
1959**HANCE and SMYTHE INC.**Closed  
Monday &  
Tuesday**Used Boats Specials!**

**2001 20' Maritime Skiff Pioneer**,  
2015 Yamaha 90hp F90LA 4-stroke, VHF radio,  
Garmin Echomap Chirp 74SV, Load Rite trl,  
bimini suntop, dual batts • **\$26,750**



**2011 Boston Whaler 19' Outrage**, 2011 Mercury  
150hp Verado 4-stroke, bimini suntop, cooler seat  
forward, stern quarter seats, full bow rail, console  
cover, Garmin electronics, galv trailer • **\$37,750**



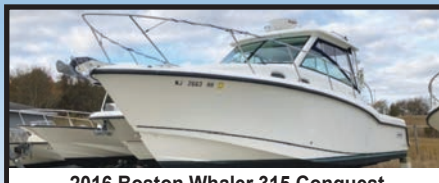
**2010 Boston Whaler 17' Montauk**,  
Mercury 90hp 4-stroke, bimini suntop, fishing  
package, Garmin GPS, galv.trailer • **\$28,500**



**1996 Parker 21' WA**, Coaming bolsters,  
"Teak" floor pad, cust cockpit pedestal seats,  
stern quarter seats, bimini suntop, very good cond,  
(Mercury 150hp not running) • **\$22,750**



**2014 21' Key West 219 FS**, Yamaha F200XB  
(368 hrs), portable toilet w/dockside pumpout,  
custom helm & seat covers, bow cushions,  
hyd steering, t-tabs, Garmin elec • **\$47,500**



**2016 Boston Whaler 315 Conquest**  
T/Mercury 250hp Verado 4-strokes, cruising pkg,  
AC, gen, Entertainment Pkg, Raymarine Nav. pkg  
(16" screen ) Radome radar, radial ORs, Spotlight,  
good cond • **\$249,900**

**Boston Whaler  
Parker • Key West  
Yamaha**

**[www.hanceandsmythe.com](http://www.hanceandsmythe.com)**  
**(609) 597-7813**

**1225 East Bay Ave  
Manahawkin, NJ**

**UTSCH'S YACHT SALES**

BETWEEN CANAL AND SCHELLENGER'S LANDING

**Rt. 109 & Cape May Canal, Cape May, NJ (609) 884-BOAT (2628)**

LICENSED

**[www.capemayharbor.com](http://www.capemayharbor.com)**

INSURED



**35' 1975 Gulfstar Trawler**,  
T/DsIs • **\$9,500**



**35' 2000 Henriques Express**,  
T/Yanmar DsIs, tower, elec • **\$125,000**



**32' 1993 Carver**,  
\$7,500



**31' 1989 Chris Craft Commander**,  
T/Crusader V8 454 • **\$19,900**



**28' 1998 Albin**,  
Cummins Diesels, **\$59,900**



**1997 29' Blackfin**,  
T/Crusader gas V8s • **\$29,900**



**28' 1995 Bayliner Cruiser**,  
V8 Mercruiser I/O, **\$7,000**



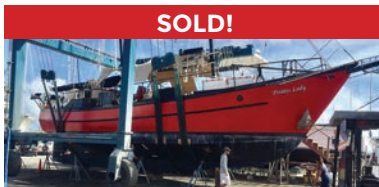
**28' 1988 Carver**,  
T/V6 Mercruisers, sleeps 4-6, **\$6,000**

34' 1981 Silverton Convertible.....	AS IS \$2,500	28' 1974 Bertram, T/V8 .....	SOLD
34' 1981 Silverton FB Conv, T/Crusader V8 gas.....	SOLD	28' 2005 Pursuit Walkaround, T/Yamaha 225hp OBs, very clean .....	SOLD
33' 1994 Carver, T/Crusader V8 gas .....	\$30,000	25' 1973 Bristol Sloop, 9.9hp outboard .....	\$1,500
32' 1988 Carver, T/V8 gas .....	AS IS \$7,900	17' 2002 Aquatron, Merc I/O, trailer .....	\$6,500
32' 2006 Rinker, T/V8 .....	SOLD	15' Custom Wood Skiff, nice condition.....	SOLD
30' 1985 Century 300 Grande, T/V8 gas inboard .....	AS IS \$3,500	<b>- MISC EQUIPMENT -</b>	
29' 2001 Seamaster Classic, 250hp Mercruiser I/O .....	\$6,000	Approximately 60 lineal feet of 10' wide concrete,	
28' 2002 Bayliner 2855 Ciera, 350hp Merc I/O .....	\$7,900	Bellingham Marine Floating Docks, very heavy construction ..	
28' 1976 Luhrs Flybridge Sedan, Crusader V8.....	\$1,500	1950 Hydraulic Cutterhead Dredge, 471 Detroit Diesel, 6' pump	
		\$29,000	





Worldwide Yacht Sales | Yacht Charters | New Yacht Construction



**SOLD!**

72' Trade Rover



**SOLD!**

50' Chris-Craft



**SOLD!**

48' Evans Boats



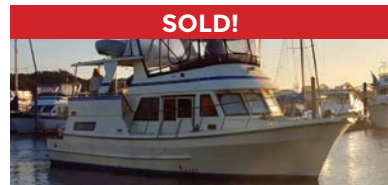
**SOLD!**

44' DeFever



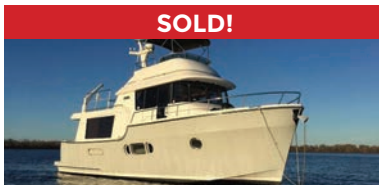
**SOLD!**

44' Gulfstar



**SOLD!**

42' Fu Hwa



**SOLD!**

40' Fathom



**SOLD!**

40' Hinckley



**SOLD!**

36' C&C



**SOLD!**

36' Bristol



**SOLD!**

32' Eagle



**SOLD!**

26' Sisu

**List your boat with us and join our **SOLD** list!**

To see more details about these and all other yachts around the globe, please visit our website below.

Annapolis, MD • St. Michaels, MD • Delaware City, DE • Deltaville, VA • Woodbridge, VA  
Telephone: 410.919.4900 • Email: [info@curtisstokes.net](mailto:info@curtisstokes.net)

**[www.curtisstokes.net](http://www.curtisstokes.net)**



**OWN the BOAT.  
OWN the SEA.**



For low rates, long terms, repower loans and to  
finance boats of **any age**, choose BEST



**CALL a LOAN OFFICER NOW**  
**1-800-USA-1965 ext 2**



**or APPLY in JUST 5 MINUTES**  
**JJBestBoatLoans.com**



Subject to consumer loan program requirements and credit approval. Certain fees, closing costs and restrictions may apply. Minimum loan amount for pleasure use is \$10,000 in all states. J.J. Best & Company operates under the name J.J. Best Banc and Company and J.J. Best Bank and Company.





# WATERFRONT MARINE

#1 GOLL AVE, SOMERS POINT, NJ ~ 609-926-1700

281 PRINCETON AVE, BRICK, NJ ~ *Featuring Chaparral* ~ 732-202-6961

2822 SOLOMON'S ISLAND RD, EDGEWATER, MD ~ 443-949-9041

Premium Brands ~ Exceptional Service

[WWW.WATERFRONTMARINE.COM](http://WWW.WATERFRONTMARINE.COM)

## BOATS AVAILABLE IN STOCK & PRODUCTION SLOTS AVAILABLE TO CUSTOMIZE!



### - PREOWNED BOATS -



Located in Somers Point

22' '16 Robalo R227 DC  
Yamaha F200 • \$59,900



Located in Somers Point

2021 25 Bennington 25QX  
250hp Yamaha V-Max,  
loaded • \$159,900



Located in Somers Point

2021 Chaparral 300 OSX  
Twin Yamaha F300 • \$259,900

### 2022 Contender 44 ST



Factory Demo!

Triple Yamaha 425 XTO's, electronics,  
Sea Keeper, loaded w/options &  
features, new warranties,

Available for Immediate Delivery!

Call Today for Pricing!

#### BOWRIDERS & PONTOONS

30' '22 Chaparral 300 OSX, T/Yamaha F300, Joystick docking.....	\$279,900
30' '19 Chaparral 300 OSX, Twin Yamaha F300.....	\$219,000
30' '14 Chaparral 307 SSX, T/Volvo Penta 300DP, joystick.....	Pending
28' '21 Chaparral 280 OSX, T/Yamaha F200.....	\$179,900
27' '07 Chaparral 276 SSI, Volvo Penta 8.1 GI DP.....	\$66,900
26' '21 Chaparral 267 SSX, Volvo Penta 350 DP.....	\$114,900
26' '13 Sea Ray 260 Sundeck, Merc 350 Mag 300hp Bili.....	Pending
26' '19 Chaparral 264 Sunesta, Volvo Penta 350 DP.....	Pending
26' '14 Chaparral 264 Sunesta, Volvo Penta 320DP, 62 hrs.....	Pending
25' '21 Bennington 25QXFBWA, Yamaha F250.....	\$159,900
25' '16 Chaparral 250 Suncoast, Yamaha F300, lift kept.....	\$72,500
24' '21 Bennington 24 SSR, Yamaha F150 motor.....	\$55,900
24' '11 Chaparral 246 SSI, Volvo Penta 5.7L GI 300 DP.....	Pending
24' '19 Chaparral 244 Sunesta, Volvo Penta 300 DP.....	\$69,900
22' '18 Crest Tritoon, Yamaha F115.....	\$33,900
22' '22 Monterey M225, Mercury 225hp.....	\$59,900
21' '19 Chaparral OB 21 H20 Sport, Yamaha F150.....	Pending
21' '16 Chaparral 21 Fish & Ski, trailer.....	Pending
20' '17 Regal 2000 ES Bowrider, Volvo Penta, 40 hours.....	Pending

#### FISHING BOATS

36' '22 Robalo R360 CC, Triple Yamaha F300, lift kept.....	\$597,000
31' '22 Robalo R317, T/Yamaha F300, Joystick docking.....	\$289,900
26' '13 Scout 262 Abaco, WAC, T/Yamaha F150.....	SOLD
24' '18 Robalo R242 CC, Yamaha F300.....	\$89,900
22' '16 Robalo R227, Yamaha F200.....	\$59,900
22' '16 Robalo R222 CC, repowered Yamaha VF250, 40 hrs, trl.....	SOLD
20' '18 Robalo R200, Yamaha F150.....	\$54,900
20' '18 Robalo R207 DC, Yamaha F150.....	Pending
18' '18 Bayliner Element CC, Mercury 115hp, trailer.....	\$24,900
13' '14 Boston Whaler Super Sport, Merc 40hp.....	\$16,900

#### CRUISERS & CUDDY CABINS

52' '08 Sea Ray 52 Sedan Bridge, T/QSM-11 Cummins Dsl.....	\$536,900
27' '19 Chaparral 270 Signature, Volvo Penta V8 300 DP, gen.....	\$114,900
23' '11 Crownline 236SC, Merc 350 Mag Bili, Loadrite galv roller trl.....	\$27,900

#### PERSONAL WATERCRAFT

2016 Sea Doo GTR 215, w/trailer.....	\$9,500
--------------------------------------	---------



AUTHORIZED  
PARTS &  
SERVICE

**MERCURY**  
MerCruiser

**YAMAHA**  
When you want the best

**VOLVO PENTA**



Full Service  
Marina w/Slings &  
Racks Available!



# NOW IS THE TIME TO BUY!

## OPEN 7 DAYS A WEEK



**FOUR WINNS**



**KW**  
**KEY WEST**



**Scout**  
Discover More...



**Great Selection of  
Pontoons in Stock!  
Call for Info!**



**G3 Boats**



**Need a Trailer?  
We Have Them  
In Stock!**

**YAMAHA** BUILT TO LAST

# 410.287.8280

**ANCHOR**  
**BOATS**  
*North East, Maryland*

[www.AnchorBoat.com](http://www.AnchorBoat.com)

448 MAULDIN AVE | NORTH EAST, MD 21901

**Parts & Service**  
**General Boat Repairs**  
**High & Dry Boat Storage**