

Free!



The

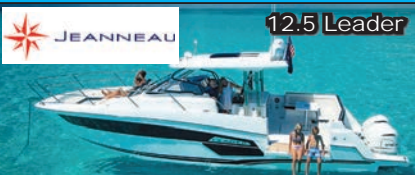
Salty Dog®



CHESAPEAKE BAY EDITION

Published Every Other Week • Distributed in Maryland, Delaware, Southern Pennsylvania and Virginia

POWERBOATS & SAILBOATS ...Including Marine Services



**Largest Inventory of
In Stock Boats in the Region!**
302-945-2254
www.RudyMarine.com



**Largest Inventory of
In Stock Pontoon in the Region!**
302-945-2254
www.RudyMarine.com



**Largest Inventory of
In Stock Pontoon in the Region!**
302-945-2254
www.RudyMarine.com

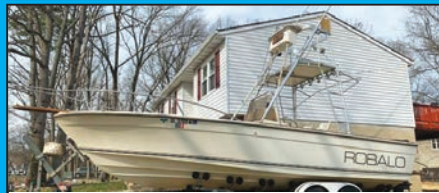


22' 2022 SAILFISH 220 CC, Dealer's personal boat for '22 summer, 150hp Mercury 4-stroke w/approx 50 hrs, kept & used in fresh water, bottom painted, fresh coat of wax & stored indoors, \$79,400, 443-553-3982, jmwoody@yahoo.com 158395

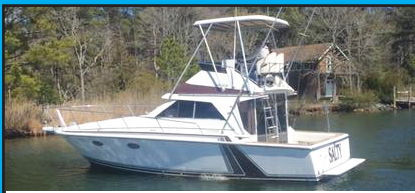
**List Your Boat
As Low As \$49!**

Go to www.thesaltydog.com
to get started!

Private Boat Ads Only



26' 1984 ROBALO 260 CC, T/Merc 200hp 2-stroke, Estate Sale, ONE OWNER BOAT, all original boat, EZ loader trailer full tuna tower with steer station, Rupp outriggers, extras, \$10,000, 443-790-8883, Watts1030@aol.com 158693



33' 1985 TROJAN 10M FB SEDAN, T/350 gas IB, gen, AC, island berth, salon w/sofa, dinette, hardtop, ORs, platform, elecs, in water w/systems activated, ready to fish offshore or extended cruising, \$17,850, 443-553-3982, jmwoody@yahoo.com 158739



9' 2021 HIGHFIELD CL290 ORCA/CSM, Never registered or used, Purchased 9/21, Stored indoors, \$Call, 609-425-1356, Brockdrussell@gmail.com 158749



41'5" 1999 BAYLINER 4087, original 77 hours on her. 3 staterooms, while the owner's aft cabin is surprisingly comfortable and includes a walkaround double berth, vanity, and a private head with separate stall shower, \$77,000, 410-474-2377, larryreich159@aol.com 158772

Annapolis, MD • St. Michaels, MD
Deltaville, VA • Woodbridge, VA
Delaware City, DE

CONTACT US TODAY!
info@curtisstokes.net
410.919.4900

**CURTIS
STOKES**
& ASSOCIATES

www.curtisstokes.net

1-888-843-1585 • Private Boat Information on Page 17



410-784-7624

10551 Eldon Willing Rd
Chance, MD 21821

bobbykemp@scottscovemarina.com



TOHATSU



75HP

90HP

115HP

Upper Chesapeake Yacht Sales

John Curry • (610) 299-3598
www.upperchesapeakeyachtsales.com



One of the cleanest boats I have listed with low hour Yanmar 315hp diesels, new canvas, newer elec and fresh bottom paint and detailing. Features a sleek express exterior with plenty of cockpit space and a well-thought-out layout, effectively combining above deck comfort with a sweet, performance-driven profile. The airy salon is one continuous living space from the forward stateroom to the comfortable aft settee with generous 6-foot, 6-inch headroom. The main head features a separate shower stall. Onan 6.5kw generator. New canvas package. Exterior and interior detailed and ready for the 2023 season. Seriously for sale by two boat owner. You have to see this one before it is gone!



56' '70 Custom Featherstone CC Ketch • gen, AC, loaded, nice • **\$59,900**



34' '05 Rinker 342 Fiesta Vee, 350 MPI FWC Horizons, super clean, **\$69,900**



33' '18 Regal BR, T/300hp Volvo, gen, AC, super clean, lift kept • **\$229,900**



33' '92 Sea Ray Sundancer T/5.7L Merc V-Drives, gen, AC **\$24,900**



32' '05 Sea Ray Sundancer, T/320hp Mercruiser V-Drive, gen, AC • **\$89,900**



26' '03 Crownline 262 CR 300hp • **\$20,900**



26' '86 Pacemaker FB Cruiser New 350hp Merc, very nice **\$14,900**



23' '01 Sea Fox 230 WA, 4.3L Mercruiser, hardtop, numerous upgrades • **\$9,900**

36' '85 Sea Ray Aft Cabin , T/260hp, gen, AC	\$19,900
34' '84 Silverton FB Convertible , T/270hp, gen, AC, very nice	\$17,900
27' '98 Mariah BR , 330hp Merc	\$9,900
23' '01 Sea Fox WA , hardtop, 4.3 Mercruiser, numerous upgrades	Reduced \$11,900



Expect The Same
Superior Service From Our
Brokerage That You Get
From Our Marina

BOAT SALES & BROKERAGE
 • *Financing & Insurance Available* •

WORTON CREEK MARINA

23145 Buck Neck Road • Chestertown, MD 21620

(410) 778-3282

CALL TO RESERVE YOUR 2023 SLIP OR RACK SPOT

Best and Fastest Access to the Bay

- 100+ Wet Slips
- 70+ Rack Boatel
- 50+ Outdoor Racks
- Trailer Parking
- High Speed Wireless
- New Bathrooms w/Showers



PARISH CREEK
LANDING
Marina • Boatyard • Boatel

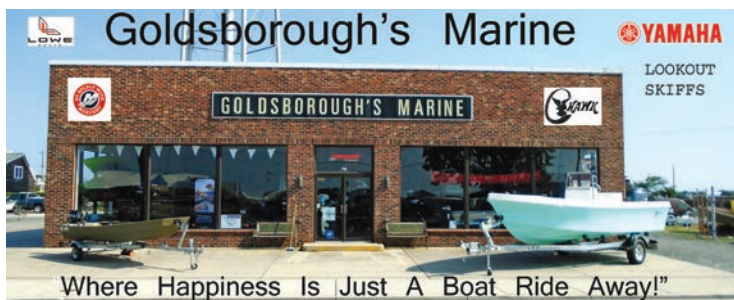
"WE WANT TO BE YOUR BOAT'S HOME!"

CALL FOR OUR SPECIALS!

4819 Woods Wharf Road
Shady Side, MD 20764

410-867-4800
parishcreeklanding.com

YEAR ROUND
**SLIPS • BOATEL
SERVICE**
Direct Access to the Bay



Where Happiness Is Just A Boat Ride Away!

Ph.# 410-968-0852

709 W. Main St., Crisfield, Maryland

Email: merc71@verizon.net



Mercury 8MH.....	\$1,920	Mercury 50 ELPT	\$6,525
Mercury 9.9MH.....	\$2,145	Mercury 90 EXLPT	\$8,495
Mercury 15MH.....	\$2,475	Mercury 115 XL Pro Max	\$10,595
Mercury 20MLH.....	\$3,075	Mercury 150 XL Pro Max	\$13,200
Mercury 25MH.....	\$3,345		

Mercury Standard Controls, Cable & Aluminum
Propeller Installation Package \$1,395



YAMAHA

Yamaha 2.5 MH	\$900	Yamaha 60 ELPT	\$7,160
Yamaha 9.9 MH	\$2,510	Yamaha 90 ELPT	\$9,095
Yamaha 15ELH	\$3,095	Yamaha 115 XLPT VMax.....	\$10,295
Yamaha 25ELHPT	\$4,295	Yamaha 150 XLPT V Max.....	\$14,400
Yamaha 30ELPT	\$5,650		

Yamaha Standard Controls, Cable & Aluminum
Propeller Propeller Installation Package \$1,395



EZ Loader 68BT
14-17 1250 Galvanized
\$1,795



Trailer
Blowout
Special!



Load Rite 1,700lbs
Galvanized Bunk Trailer
\$2,095

Goldsborough's Marine

**CAROLINA
SKIFF****23 Ultra****SEA
CHASER**
By: Carolina Skiff, Inc.**24 HFC**

Powered by:



DANNY'S MARINE
(410) 228-0234 • www.dannysmarine.com
 Located on US Rt 50 (mile marker 86) • Chateau Drive near Linkwood, MD
dannysmarine@comcast.net

Limited Time Offers. Not all models qualify. See Participating Suzuki Marine dealer for details or visit www.suzukimarine.com
 ©2020 Suzuki Motor of America, Inc.

**Fishin' Boats From
Fishin' Folks**

SPRING SAVINGS!

\$165,000

2022 Key West Boats 263 FS -
Yamaha Engine, Center Console

\$145,000

2005 HydraSports 3300CC
Vector Tower - 2018 Suzuki DF350

\$139,000

2005 HydraSports 3300VX Vector
Express - Yamaha XF425

\$219,995

2022 Key West 263 FS - Loaded,
Twin Yamaha F300's - 85 hours, with
trailer

\$79,900

2000 HydraSports 2596CC /
2600CC Vector - 2016 Yamaha
F200XCA

\$59,900

2000 HydraSports 2800CC
Vector - 2007 Suzuki DF300

GOOTEE'S MARINE

South of Cambridge On Maryland's Eastern Shore
 1439 Hooper's Island Road, Church Creek, Maryland



800-792-0082
Gootees.com



410-571-0045

2830 Solomons Island Road
Edgewater, MD 21037

ppmmarine@aol.com

MERCURY

MerCruiser

NEW MOTORS IN STOCK AND READY TO GO!



**MerCruiser
350 Mag**



**MerCruiser
383 FWC**

*Call for Pricing and Details on our Used Engines!

Other Services Offered:

**Marine Engine & Sterndrive Repair • Mercury Outboard Service, Optimax & Verado
Dealer for Mercury, MerCruiser, Volvo Penta & Indmar**

MARINE TECHNICIAN TRAINING

RIDE THE CREST

to CAREER SUCCESS



ENROLL FOR TRAINING TO BECOME A PROFESSIONAL MARINE SERVICE TECHNICIAN

Our in-depth program includes training in: Seamanship, AC & DC Electrical, ABYC Standards, Air Conditioning & Refrigeration, Mechanical Systems, Stern Drives/Transmissions, Computerized-Fuel Injected Inboard and Outboard Engines, Inboard, Outboard and I/O Systems, Electronic Diesel Engines (Cummins QSB 5.9 380 HP Common Rail Trainer), Fiberglass & Gelcoat Repair, Plumbing and Sanitation Systems.

Financial Aid for those who Qualify • Career Placement Assistance



CALL NOW

866-656-7794

www.autotraining.edu

900 Johnsville Blvd., Warminster, PA 18974

Supported by



with Training Materials & Equipment

For required program disclosure information, please go to www.autotraining.edu/consumerinformation.

Rt. 113 Boat Sales and Service

Rt113BoatSales.net

TAX FREE

f YouTube

YAMAHA Service
Master Yamaha Technician on Staff

P PURSUIT UNRELENTING PERFORMANCE THAT IS BUILT WITH INTEGRITY AND A REFINEMENT BEYOND COMPARE



COBIA Quality is More Affordable Than You Think From 22 - 35 Ft.



PATHFINDER Angler Driven and #1 for a Reason From 22 - 27 ft.



BROKERED BOATS WANTED!

**CLEAN, LATE MODELS UP TO 35 FT.
LOW FEES WITH GREAT RESULTS!**



SERVICING
Ocean City and Indian River Marinas

MOBILE SERVICE UNITS

AVAILABLE BROKERED BOATS

ALL BOATS POWERED BY RELIABLE YAMAHA 4-STROKE MOTORS

2022 Cobia 330 DC Whisper Gray Twin XF425s	\$ 325,000.00	PENDING
2022 Cobia 320 CC Azul Blue Twin XF425s	\$ 299,999.00	
2022 Cobia 280 DC Atlantic Blue Twin F250	\$ 235,000.00	SOLD
2018 Cobia 261 CC Anthracite Gray Twin F150	\$ 99,999.00	SOLD
2015 Contender 25 Bay Gray F300	\$ 87,500.00	
2017 Pathfinder 2500 Hybrid Atlantic Blue F300	\$ 97,500.00	PENDING
2017 Pathfinder 2400 TRS White F300	\$ 88,000.00	
2017 Tidewater 230 CC Horizon Blue VF250	\$ 63,500.00	
2018 Pathfinder 2200 TRS Blue/White F200	\$ 69,999.00	
2007 Triumph 215 CC White F150	\$ 24,999.00	SOLD

BRING OFFERS!

In Stock & Incoming!

Pursuit DC246	Cobia 220 CC
Pursuit DC266	Cobia 220 CC
Pursuit S288	Cobia 220 CC
Pursuit S288	Cobia 240 CC
Pursuit DC326	Cobia 240 CC
Pursuit DC326	Cobia 240 CC
Pursuit S428	Cobia 262 CC
Pathfinder 2200 TRS	Cobia 262 CC
Pathfinder 2200 TRS	Cobia 262 CC
Pathfinder 2400 TRS	Cobia 262 CC
Pathfinder 2400 TRS	Cobia 280 CC
Pathfinder 2400 TRS	Cobia 280 CC
Pathfinder 2400 TRS	Cobia 301 CC
Pathfinder 2600 TRS	Cobia 320 CC
Pathfinder 2600 TRS	Cobia 350 CC
Pathfinder 2700 OPEN	

GARMIN
Certified Installer

JL AUDIO

10% OFF
ALL IN STOCK ITEMS THROUGH MAY 31

RT113 BoatSales.net • 52 Cemetery Rd. Selbyville, DE 302.436.1737



Worldwide Yacht Sales | Yacht Charters



2003 65' Ocean Yachts - \$520,000
Mary Catherine Ciszewski - 804.815.8238



2021 60' Custom - \$690,000
David Robinson - 410.310.8855



1986 47' DeFever - \$180,000
Larry Klauer - 717.571.3137



2000 47' Custom - \$449,500
Lin Earley - 757.672.2778



1989 46' Grand Banks - \$349,500
Jason Hinsch - 410.507.1259



2002 46' Carver - \$238,000
Andy Stratton - 903.265.7670



1984 42' Grand Banks - \$90,000
Lin Earley - 757.672.2778



1981 42' Post - \$65,000
Andy Stratton - 908.265.7670



1990 41' Mainship - \$54,900
Jason Hinsch - 410.507.1259



1983 40' Ocean Alexander - \$89,000
Curtis Stokes - 410.919.4900



1995 40' Regal - \$85,000
Bill Sudek - 443.463.2583



1999 40' Custom - \$120,000
David Robinson - 410.310.8855

To see more details about these and all other yachts around the globe, please visit our website below.

Telephone: 410.919.4900 • Email: info@curtisstokes.net

www.curtisstokes.net

ALMARS

PLEASE CALL FOR UPDATES!
Motors Are Slowly Arriving!

We Are A Full Service, Premier Mercury Outboard Repair Center! Let Our Certified Mercury Technicians Service Your Mercury Motor Needs!

**MOST CONFIGURATIONS
IN STOCK NOW
2.5HP-200HP!**

**Call for Compatibility
and Complete Inventory!**



**2.5HP
3.5HP
4HP
5HP**

**6HP
8HP
9.9HP
15HP**

**20HP
25HP
50HP
60HP**

**75HP
115HP
150HP
200HP**



THESE WILL GO FAST!

ATTENTION!

WE NOW HAVE A FEW 200'S!

**WE NOW HAVE A FEW V-10
350'S!**

**WE HAVE A FEW LEFTOVER
VERADO L-6 350'S & 400'S!**

**Call now for Details!
Limited Quantities!**

**CALL
NOW TO
ORDER
YOUR
4-STROKE!**



150
4-stroke
Black



150 ProXS
4-stroke
Black



175XL ProXS
4-stroke
Black



200
Sea Pro
Black



225XL
4-stroke
Black



250 XL
4-stroke
White

**100's of Used Cowllings
In Stock!
Call for Availability!**

**We Now Offer
INJECTOR SERVICE
with ONE Day Turnaround**

REMANUFACTURED OUTBOARD ENGINE SALE!

90hp - 250hp 1 Full Year Warranty

Starting As Low As \$5,495 Call for Details!

**CALL US
FOR GREAT
DEALS ON
NON-CURRENT
POWERHEADS!**

**CALL JACK FOR MOST
CURRENT INVENTORY & PRICING!**

701 Washington St., New Castle, DE

302-328-8541

www.almarsoutboards.net

All prices good
while supplies last!

HOURS: Monday - Friday: 8am - 5pm
CALL FOR GREAT PRICING ON NEW
& USED MERCURY OUTBOARDS

NO HIDDEN COSTS
NOT RESPONSIBLE FOR TYPOGRAPHICAL ERRORS

MERCURY
"1 On The Water"

Pricing includes all rebates.

CLARKS LANDING

YACHT SALES

Factory
Direct
Pricing

SOLARA

Cutwater's
New Premium
Brand!

**FREE SLIP WITH
PURCHASE**
Call for Details
25 Centerwalk
25 Dual Console
25 Coupe



25 Centerwalk



25 Dual Console



25 Coupe



31 Centerwalk



BENETEAU



**FREE SLIP
WITH PURCHASE**
Call for Details
Flyer 8
Flyer 9
Flyer 10



Flyer 8 Spacedeck
REBATE \$2,380



Flyer 9 Sundeck
REBATE \$3,780



Flyer 10
REBATE \$6,370

Wellcraft®



202 & 222 Fisherman



242 Fisherman



262 Fisherman



355 Commuter

New
Dealer For



NIMBUS

**FREE SLIP
WITH
PURCHASE**
Call for Details



Tender 11



CLARKS LANDING

YACHT SALES

on the Manasquan River
847 Arnold Avenue
Point Pleasant, NJ

732-899-5559 • www.ClarksLanding.com



LARGEST SELECTION OF PONTOONS & CRUISERS IN THE REGION!



JEANNEAU



Bentley



SunChaser



YAMAHA



LARGEST INVENTORY OF
YAMAHA IN THE REGION!

Conveniently
Located on
Rt 113



Delaware has
NO SALES TAX!

Near:
**Fenwick Island
Bethany Beach
Ocean View
Ocean City, MD**



302-945-2254 • 32606 DuPont Blvd Dagsboro, DE 19969

443-995-3785 • 3033 Kent Narrows Way South, Suite 3 Grasonville, MD 21638



why get towing? | breakdowns happen



Breakdowns are unpredictable, make them less stressful with an Unlimited Towing Membership from TowBoatU.S. You can relax, we've got your back.



BoatU.S.

JOIN TODAY!
BoatUS.com/Towing

Details of services provided can be found online at BoatUS.com/Agree. TowBoatU.S. is not a rescue service. In an emergency situation, you must contact the Coast Guard or a government agency immediately.

RESERVE YOUR SLIP TODAY!

MARINE REPAIRS & MAINTENANCE
STORAGE
HAULING
POOL ACCESS
EVENTS
LODGING

Call or E-mail:

410-758-2394

info@kennersleypoint.com



KENNERSLEY
POINT MARINA

CHURCH HILL, MARYLAND 410-758-2394

ANNAPOLIS CRUISAIR, INC.

Family Owned & Operated for Over 50 Years

SALES • SERVICE • INSTALLATION



U-LINE
U-Line Ice makers
110/115vAC

We will
meet or beat
any competitive
price quote for
these products!

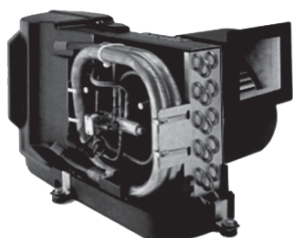


Marine Diesel
Heaters

Espar

Cruisair®

New Turbo
Air Conditioners • Heat Pumps



• We Have • BREATHE EASY AIR FILTERS

Sentry™
Cruisair

BATTERY
CHARGERS



SAFEST
CHARGER
ON THE
MARKET!

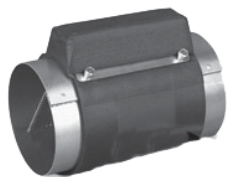
**Eskimo Ice
600 Ice Pump**

Provides up to 600 lbs. of fresh
ice in a day from your ship's
water tank.



STINKY BOAT?

We Have **NEW**
Breathe Easy
Air Purifiers



➡ **DOMETIC**

SPOT ZERO®
Fresh Water Reverse Osmosis

Water Purification Systems



Vitrifrigo
REFRIGERATORS

WAECO
Adler/Barbour®



MARINE AIR SYSTEMS®

AIRRRRRRRRR

by Dometic GROUP



KOHLER.

- Generators -



Fischer Panda

Onan

2124 Renard Ct. • Annapolis, MD
(410) 224-0970 • (410) 974-6136 • Fax (410) 224-0050
www.annapoliscruisair.com

SAVE when you Sell ...and when you Buy

*boaters first*TM
yachtx.com

The trusted alternative to high cost brokerage and the hassle & risks of FSBO, we make selling your boat easy, safe and produce better outcomes with professional advisors, Web transaction management, escrow and multi-platform marketing - all for just 1.5% or less.

Ask about our buyer representation rebate
... and YachtX RewardsTM referral program.

boaters saving 85% in selling costs through yachtx.com



boaters receiving thousands in buyer rebates through yachtx.com



443.888.9190

"YachtX", "Boaters First", "YachtX Rewards" are trademarks of YachtX, Inc.



ADVERTISERS INDEX

ALMARS.....	9	J.J. BEST BANC & CO.....	22
ANCHOR BOATS.....	24	KENNERSLEY POINT MARINA.....	13
ANNAPOLIS CRUISAIR.....	14	PARISH CREEK LANDING.....	4
ATC AUTO/MARINE TRAINING.....	6	PERSIMMON POINT.....	6
BOAT LIFTS UNLIMITED.....	16	RT 113 BOAT SALES.....	7
BOAT US.....	12	RUDY MARINE.....	11
CLARKS LANDING.....	10	SCOTT'S COVE MARINA.....	2
CURTIS STOKES.....	8, 21	UPPER CHESAPEAKE YACHT SALES..	3
DANNY'S MARINE.....	5	UTSCH'S YACHT SALES.....	20
GOLDSBOROUGH'S MARINE.....	4	WATERFRONT.....	23
GOOTEE'S MARINE.....	5	YACHTX.....	15

THE LARGEST LOW PROFILE BOAT LIFT MANUFACTURER IN THE USA

**CALL
US FOR
YOUR LOCAL
DEALER!**



Choose The Right Boat Lift, Choose

- Low Profile Design • Low Maintenance • 2/5 Yr Warr.
- Outside Walkway • Galvanized Steel Construction
- Aluminum Cradles Available • Capacity 800-40,000 lbs. www.magnumlift.com

MAGNUM
BOAT LIFTS
Personal Watercraft Lifts

Fully
Insured

BOAT LIFTS UNLIMITED
410-674-3100 • 1-800-268-5911

**WE SERVICE
MOST MAKES
OF BOAT
LIFTS!**

Located in Odenton, MD, this full-service boat lift manufacturer has a network of over 180 distributors serving the Chesapeake Bay, Great Lakes and Atlantic Coast with Magnum Boat Lifting Products. Boat Lifts Unlimited is dedicated to customer satisfaction through prompt, courteous service on most existing boat lifts and timely installation of new boat lifts. Quality materials, attention to detail and innovative design have made Boat Lifts Unlimited one of the largest boat lift manufacturers in the U.S.

FREE LISTING WITH PHOTO ON THE INTERNET

PRIVATE AD RATES

- ☐ INTERNET ONLY UP TO 1 YEAR..... \$49⁰⁰
☐ 3 ISSUES NO PHOTO CLASSIFIED..... \$59⁰⁰
☐ 3 ISSUES WITH COLOR PHOTO
 WITH COLOR PHOTO ON INTERNET..... \$69⁰⁰
☐ INTERNET FEATURE ADD ON 4 WEEKS
AVAILABLE WITH AD PURCHASE ONLY!
 ON THE SALTY DOG HOME PAGE..... \$49⁰⁰
☐ FRONT COVER..... \$40⁰⁰
☐ FACEBOOK FEATURE..... \$15⁰⁰
☐ PUBLICATION MAILED TO YOU..... \$2⁰⁰

TOTAL

FRONT COVERS ARE BASED ON AVAILABILITY

- ☐ CHECK ☐ MONEY ORDER ☐ DISCOVER
☐ MASTERCARD ☐ VISA ☐ AMERICAN EXPRESS

CC#

Expiration Date _____ Security Code _____

Advertiser's Name

Address

Phone

Where did you pickup "The Salty Dog"?

Store

Town

Fill out the description form below, **up to 125 characters (including spaces & punctuation) of advertising**. Please put one character per space beginning with the motor. Include a check, money order or credit card, and mail to us with a good quality COLOR photograph of your boat. Photos will only be returned if accompanied by a self-addressed stamped envelope.

AD COPY

FT. _____ YR. _____

MANUF. / MODEL _____

MOTOR _____

ACCESSORIES _____

LOCATION OF BOAT _____, _____ State _____ Zip Code _____

PRICE _____

PHONE # _____

EMAIL _____

Send to: The Salty Dog
254 Brick Blvd • Suite 1
Brick, NJ 08723

888-843-1585

Fax (732) 477-9000 • Email: info@thesaltydog.com

No refunds after Ad is processed. • Advertiser will be responsible for \$20 fee on returned checks.

YOUR BOAT LISTING CAN ALSO BE SUBMITTED ON THE INTERNET www.thesaltydog.com

SPECIAL FEATURES

PRIVATE BOAT ADSPg. 18-20

SUBSCRIPTION CHESAPEAKE BAY

SALTY DOG is published Bi-weekly 25 times a year.

Papers are mailed **FIRST CLASS**. Your first issue will be mailed within 1 week.

To subscribe, just fill in the amount of issues and multiply by \$2.00*

No. of issues _____ x \$2.00* = Total Cost _____

☐ CHECK ☐ MONEY ORDER ☐ MASTERCARD ☐ VISA

Credit Card No. _____

Exp. Date _____

Signature _____

Name _____

Address _____

City _____ State _____ Zip _____

Telephone _____

*Canada Subscription Add 10% - Bermuda Subscription Add 30%
 Outside the Continental USA Add 50% • Credit Cards Only Outside USA



Mail To: THE SALTY DOG, 254 Brick Blvd • Suite 1, Brick, NJ 08723



A Bi-weekly Publication for
 Powerboats, Sailboats, Marine
 Equipment, Supplies, Services,
 Waterfront and Photo Ads

For More Info on Display Ads or Internet Listings

Call 888-843-1585 • Fax (732) 477-9000

info@thesaltydog.com • Mon.- Fri. 9:00 am to 4:00 pm

See Color Photo on the Internet



46' 2002 AZIMUT FLYBRIDGE, T/Cat 3126B 450hp Dsls, Raymarine elec's, new: Fusion stereo, bow sunpads, cushions, Axiom displays, rebuilt turbos, batts, \$269,000, 609-693-9423 tidesendmarina1@gmail.com 158754

See Color Photo on the Internet



30' 2018 CHRIS CRAFT 30 HERITAGE EDITION, T/Merc Seacore V8 6.2L 350hp, low hours, \$199,900, 732-899-8010 sales@schraderiyachts.com 158758

See Color Photo on the Internet



28' 2014 CHRIS CRAFT 28 LAUNCH, T/Mercruiser 350 Mag DTS, FWC, 285 hours, Midnight Blue hull, \$149,000, 732-899-8010 sales@schraderiyachts.com 158414

See Color Photo on the Internet



43' 2017 Everglades Boats 435 CC, Quad 300hp Yamaha 4-strokes, full tower, loaded w/electronics, well maint'd, \$499,000, 631-327-0843 stoneharboryachts@gmail.com 158335

See Color Photo on the Internet



30' 2018 WELLCRAFT SCARAB 302, T/Mercury Verado 400Rs, 255 hours, Triple Black, loaded w/electronics & sound system, never fished, lift kept! \$189,900, 917-817-5084 info@deepwaterlanding.com 157631

See Color Photo on the Internet



28' 2004 GRADY-WHITE 283 RELEASE, T/225hp Yamaha 4-strokes (exhaust kits done), elec's, head, loaded, \$74,900, 917-817-5084 info@deepwaterlanding.com 158666

See Color Photo on the Internet



40' 2007 FORMULA 400 SS, under 300 orig hrs on its T/ DIESEL Volvo Penta D6-350s - extremely clean, very rare, factory hardtop, tons up upgrades, \$264,000, 609-693-9423 tidesendmarina1@gmail.com 158755

See Color Photo on the Internet



30' 1981 TROJAN F30, Chrysler 318 (2), 400 hours on repower, A/C and heat, GPS, depth/fish finder, radar, VHF, sleep 6, micro, stove/oven. Bimini damaged in storm, \$11,900, 609-410-2470 vspsmail@comcast.net 158765

See Color Photo on the Internet



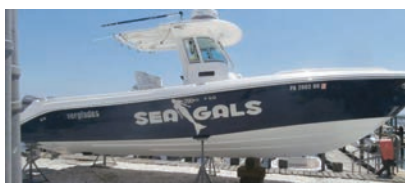
28' 2006 SEA RAY 280 SUNDANCER, T/4.3L Mercs, full cover, camper cover, sleeps 6, full head & galley, Asking \$48,900, 917-817-5084 info@deepwaterlanding.com 157632

See Color Photo on the Internet



38' 2006 SEA RAY 38 SUNDANCER, Twin 8.1S Mercruiser 370 I/O, 320 hours, Kohler gen, side power bow thruster, \$199,000, 732-899-8010 sales@schraderiyachts.com 157963

See Color Photo on the Internet



29' 2007 Everglades Boats 29 CENTER CONSOLE, T/Honda 225hp 4-stroke, new OEM blacks replaced in '22, 650 hrs, CP, FF, GPS w/radar, lean bar w/T-Tabs, windlass, head, hard, 609-927-5900 robert@somerspointmarina.com 158415

See Color Photo on the Internet



27' 2019 CHRIS CRAFT CATALINA 27 HERITAGE, Trim Edition, T/Yamaha F200hp, approx 245 hrs, Blue Crystal Metallic hull, \$195,000, 732-899-8010 sales@schraderiyachts.com 158413

See Color Photo on the Internet



38' 1999 UNIFLITE SPORTFISH, 671 Detroit Dsls, low hours rebuild, 13.9' beam, purchased in '99, All Offers Considered, 701-839-5411 lyle.w.dallman@gmail.com 158823

See Color Photo on the Internet



28' 2019 GRADY-WHITE 285 fully loaded, sunshade, joystick & more, perfect condition!, \$249,800, 908-489-5098 www.seaportinletmarina.com 158168

See Color Photo on the Internet



27' 2018 SEA CHASER CC, T/200hp Suzukis, lift kept (no bottom paint), loaded, 125 hours, \$109,900, 917-817-5084 info@deepwaterlanding.com 158169

See Color Photo on the Internet



33' 2003 RINKER Fiesta Vee 290, Twin Mercruisers 5.0 MPI Alpha 1 Gen 2, She has twin Merc 5.0 MPI's with Alpha 1 Gen 2 I/O's. New Dometic AC/Heater, new power head, Well maintained, \$45,000 OBO, 732-979-6968 nbpd594@aol.com 158673

See Color Photo on the Internet



28' 2021 Tidewater ADVENTURE CC, T/Yamaha F250, approx 62 hrs, Joystick, 1 Garmin 10" XHD radar, structure scan, ORs, windlass, \$204,900, 732-899-8010 sales@schraderiyachts.com 158170

See Color Photo on the Internet



27' 2017 DEFIANCE 270 ADMIRAL, T/Honda 225hp, 235 hrs, t-tabs, cooler boxes/livewells, rocket launchers, RWWD, ORs, elec's, 917-817-5084 info@deepwaterlanding.com 158665

See Color Photo on the Internet

26' 2012 CHAPARRAL 264 SUNESTA, Merc 350 Mag, sporty & functional, vacuflush head & sink, manifolds & risers recently installed, brand new trailer, \$55,000, 609-693-9423 tidesendmarina1@gmail.com 158756

See Color Photo on the Internet

23' 2022 AQUASPORT 2300, DF300AP Suzuki 300hp, with only 46 hrs of run time. Fresh and raw water.. stereo with sub and amp. 12" simrad., \$90,000, 410-810-1616 jjracing29@yahoo.com 158752

See Color Photo on the Internet

22' 2016 BOSTON WHALER 220 OUTRAGE VERY RARE, T/150hp Mercury Verados, 157 hrs, dual Raymarine screens, loaded, head, t-top, good elec, trailer, one owner, \$112,900, 917-817-5084 info@deepwaterlanding.com 156842

26' 1984 ROBALO 260
All original boat Twin Merc
200hp 2-stroke, Ez loader
trailer, Full Tuna Tower with
steer station
\$10,000
443-790-8883
Watts1030@aol.com

See Color Photo on the Internet

23' 2001 CONTENDER CENTER CONSOLE, New T/Honda 150 IST w/5 year warranty, NEW: steering, Garmin w/18" radar, interior, paint, stereo/speakers, Eisenglass, w/trl, \$84,500, 917-817-5084 info@deepwaterlanding.com 158131

See Color Photo on the Internet

22' 2015 BENNINGTON SX22, New, Bennington SX22 Pontoon (saltwater Performance Package) w/ NEW 2022 Yamaha Vmax 115hp (5hrs) Excellent Condition, \$38,900, 410-409-2697 jld5960@msn.com 156814

See Color Photo on the Internet

25' 2007 PARKER 2501 DEEP V, T/Yamaha F150, Garmin elec, Taco ORs, Load Rite D/A trailer, \$73,000, 732-899-8010 sales@schraderyachts.com 158757

See Color Photo on the Internet

23' 2012 PARKER 23SE, Yamaha, Parker, 2012, 23SE, CC, low hours, exec condition, boatel kept, original owner, extras, \$46,000, 301-651-9704 nealcohen@comcast.net 158668

See Color Photo on the Internet

21' 1999 BOSTON WHALER OUTRAGE, Yamaha 225 EFi 2-stroke OB, trailer included, newer elec, new cushions, \$21,990, 609-927-5900 robert@somerspointmarina.com 158810

See Color Photo on the Internet

25' 2008 CHAPARRAL 256 SSI, Volvo I/O, new transom assembly, 165 original hours, ready to go! **MAKE OFFER!**, \$33,900, 917-817-5084 info@deepwaterlanding.com 155615

See Color Photo on the Internet

23' 2008 SUGAR SAND OASIS AIRWAVE, 250hp Opti Jet Drive, tower, bimini, snap in carpet, table, full cover, new wear ring & SS impeller (21), 280 hrs, fast boat, \$15,995, 908-309-4016 almarina1@gmail.com 156290

See Color Photo on the Internet

21' 1976 BOSTON WHALER OUTRAGE, 1996 150hp Johnson Ocean Runner, professionally restored, turn key, ready to go!, \$19,500, 732-270-0022 nelsonmarinebasin@comcast.net 157989

See Color Photo on the Internet

24' 2004 CHAPARRAL SIGNATURE, 5.0L Volvo Penta, 360 hours, FF, GPS, well cared for & it shows, in water for test drive, \$24,000 **MAKE OFFER!**, 609-287-2283 bhown127@aol.com 156446

See Color Photo on the Internet

23' 2000 GRADY-WHITE GULFSTREAM, project boat for right buyer, currently 150hp Evinrude Ficht - need work, new cushions, encl for hardtop, down riggers, offer as discount AS IS WHERE IS!, \$14,995, 609-927-5900 robert@somerspointmarina.com 158811

See Color Photo on the Internet

20' 1983 CUSTOM BUILT MINI TUGBOAT

20hp Diesel Yanmar, keep cooled, dry stack exhaust, includes trailer, in water
JUST REDUCED!

\$10,999

609-519-3583

harbornj@yahoo.com

157105

See Color Photo on the Internet

24' 2001 WELLCRAFT CUDDY CABIN, repowered in '16 with a Honda BF250AXA 4-stroke OB, only 473 hrs on motor, Garmin elec, trailer, 609-927-5900 robert@somerspointmarina.com 158690

See Color Photo on the Internet

23' 2001 CONTENDER CC, New T/Honda 150IST w/5yr warr, new: steering, Garmin w/18" radar, interior, paint, stereo/speakers, Eisenglass, trl, turn key, 917-817-5084 info@deepwaterlanding.com 158664

See Color Photo on the Internet



20' 2008 SEA DOO SPEEDSTER
200, Sea Doo / BRP,
 2008 Sea Doo twin engine jet boat,
 430 hp, lake tested,
 very fast trailer incl,
\$10,000

Call or Text 405-477-4952
 rogerate400@yahoo.com

158659

See Color Photo on the Internet



18' 2001 BOW RIDER BOWRIDER, Merc 4.3L V6, new mani-
 folds & risers, new thermostat, runs great, **\$9,000, 908-868-6026**
 reeldeelsusa@verizon.net 158718

Boats Wanted

Whistle Yacht Services

Let me know what kind of boat you have
 Happy to take a look and make an offer

Send a message or call

410-570-9150

cnc.ryanb@gmail.com

UTSCH'S YACHT SALES

BETWEEN CANAL AND SCHELLENGER'S LANDING

Rt. 109 & Cape May Canal, Cape May, NJ (609) 884-BOAT (2628)

LICENSED

www.capemayharbor.com

INSURED



35' 1975 Gulfstar Trawler,
 T/DsIs • **\$9,500**



35' 2000 Henriques Express,
 T/Yanmar DsIs, tower, elects • **\$125,000**



32' 1993 Carver,
\$7,500



31' 1989 Chris Craft Commander,
 T/Crusader V8 454 • **\$19,900**



28' 1998 Albin,
 Cummins Diesels, **\$59,900**



1997 29' Blackfin,
 T/Crusader gas V8s • **\$29,900**



28' 1995 Bayliner Cruiser,
 V8 Mercruiser I/O, **\$7,000**

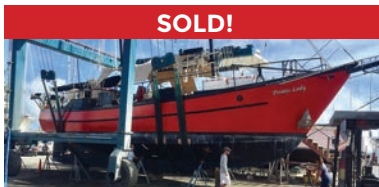


28' 1988 Carver,
 T/V6 Mercruisers, sleeps 4-6, **\$6,000**

34' 1981 Silverton Convertible.....	AS IS \$2,500	28' 1974 Bertram, T/V8	SOLD
34' 1981 Silverton FB Conv, T/Crusader V8 gas.....	SOLD	28' 2005 Pursuit Walkaround, T/Yamaha 225hp OBs, very clean	SOLD
33' 1994 Carver, T/Crusader V8 gas	\$30,000	25' 1973 Bristol Sloop, 9.9hp outboard	\$1,500
32' 1988 Carver, T/V8 gas	AS IS \$7,900	17' 2002 Aquatron, Merc I/O, trailer	\$6,500
32' 2006 Rinker, T/V8	SOLD	15' Custom Wood Skiff, nice condition.....	SOLD
30' 1985 Century 300 Grande, T/V8 gas inboard	AS IS \$3,500	- MISC EQUIPMENT -	
29' 2001 Seamaster Classic, 250hp Mercruiser I/O	\$6,000	Approximately 60 lineal feet of 10' wide concrete,	
28' 2002 Bayliner 2855 Ciera, 350hp Merc I/O	\$7,900	Bellingham Marine Floating Docks, very heavy construction ..	
28' 1976 Luhrs Flybridge Sedan, Crusader V8.....	\$1,500	1950 Hydraulic Cutterhead Dredge, 471 Detroit Diesel, 6' pump	
		\$29,000	



Worldwide Yacht Sales | Yacht Charters | New Yacht Construction



SOLD!

72' Trade Rover



SOLD!

50' Chris-Craft



SOLD!

48' Evans Boats



SOLD!

44' DeFever



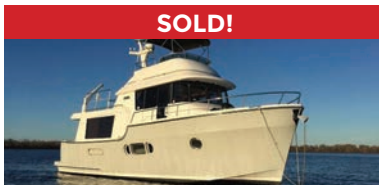
SOLD!

44' Gulfstar



SOLD!

42' Fu Hwa



SOLD!

40' Fathom



SOLD!

40' Hinckley



SOLD!

36' C&C



SOLD!

36' Bristol



SOLD!

32' Eagle



SOLD!

26' Sisu

List your boat with us and join our **SOLD list!**

To see more details about these and all other yachts around the globe, please visit our website below.

Annapolis, MD • St. Michaels, MD • Delaware City, DE • Deltaville, VA • Woodbridge, VA
Telephone: 410.919.4900 • Email: info@curtisstokes.net

www.curtisstokes.net



OWN the BOAT. OWN the SEA.



For low rates, long terms, repower loans and to
finance boats of **any age**, choose BEST



CALL a LOAN OFFICER NOW
1-800-USA-1965 ext 2



or APPLY in JUST 5 MINUTES
JJBestBoatLoans.com



Subject to consumer loan program requirements and credit approval. Certain fees, closing costs and restrictions may apply. Minimum loan amount for pleasure use is \$10,000 in all states. J.J. Best & Company operates under the name J.J. Best Banc and Company and J.J. Best Bank and Company.



WATERFRONT MARINE

#1 GOLL AVE, SOMERS POINT, NJ ~ 609-926-1700

281 PRINCETON AVE, BRICK, NJ ~ *Featuring Chaparral* ~ 732-202-6961

2822 SOLOMON'S ISLAND RD, EDGEWATER, MD ~ 443-949-9041

Premium Brands ~ Exceptional Service

WWW.WATERFRONTMARINE.COM

BOATS AVAILABLE IN STOCK & PRODUCTION SLOTS AVAILABLE TO CUSTOMIZE!



- PREOWNED BOATS -



Located in Somers Point

22' '16 Robalo R227 DC
Yamaha F200 • \$59,900



Located in Somers Point

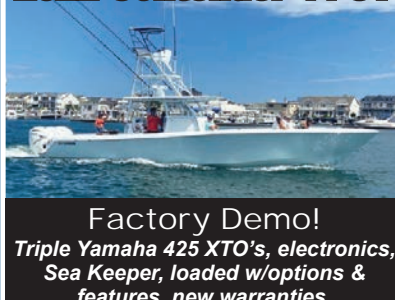
2021 25 Bennington 250QX
250hp Yamaha V-Max,
loaded • \$159,900



Located in Somers Point

2020 Robalo R230
Yamaha VF250 • \$85,900

2022 Contender 44 ST



Factory Demo!
Triple Yamaha 425 XTO's, electronics,
Sea Keeper, loaded w/options &
features, new warranties,
Available for Immediate Delivery!
Call Today for Pricing!

BOWRIDERS & PONTOONS

30' '22 Chaparral 300 OSX, T/Yamaha F300, Joystick docking.....	\$279,900
30' '19 Chaparral 300 OSX, Twin Yamaha F300.....	\$219,000
30' '14 Chaparral 307 SSX, T/Volvo Penta 300DP, joystick.....	Pending
28' '21 Chaparral 280 OSX, T/Yamaha F200.....	\$179,900
27' '07 Chaparral 276 SSI, Volvo Penta 8.1 GI DP.....	\$66,900
26' '21 Chaparral 267 SSX, Volvo Penta 350 DP.....	\$114,900
26' '13 Sea Ray 260 Sundeck, Merc 350 Mag 300hp BIII.....	Pending
26' '19 Chaparral 264 Sunesta, Volvo Penta 350 DP.....	Pending
26' '14 Chaparral 264 Sunesta, Volvo Penta 320DP, 62 hrs.....	Pending
25' '21 Bennington 250QXFBWA, Yamaha F250.....	\$159,900
25' '16 Chaparral 250 Suncoast, Yamaha F300, lift kept.....	\$72,500
24' '21 Bennington 24 SSR, Yamaha F150 motor.....	\$49,800
24' '11 Chaparral 246 SSI, Volvo Penta 5.7L GI 300 DP.....	Pending
24' '19 Chaparral 244 Sunesta, Volvo Penta 300 DP.....	\$69,900
22' '21 Bennington 22LSRD, Yamaha F150.....	\$59,900
22' '18 Crest Tritoon, Yamaha F115.....	\$33,900
22' '22 Monterey M225, Mercury 225hp.....	\$59,900
21' '19 Chaparral OB 21 H20 Sport, Yamaha F150.....	Pending
20' '17 Regal 2000 ES Bowrider, Volvo Penta, 40 hours.....	Pending

FISHING BOATS

36' '22 Robalo R360 CC, Triple Yamaha F300, lift kept.....	\$597,000
31' '22 Robalo R317, T/Yamaha F300, Joystick docking.....	\$289,900
24' '18 Robalo R242 CC, Yamaha F300.....	\$89,900
22' '16 Robalo R227, Yamaha F200.....	\$59,900
22' '16 Robalo R222 CC, repowered Yamaha VF250, 40 hrs, trl.....	SOLD
20' '18 Robalo R200, Yamaha F150.....	\$54,900
20' '18 Robalo R207 DC, Yamaha F150.....	Pending
18' '18 Bayliner Element CC, Mercury 115hp, trailer.....	\$24,900
13' '14 Boston Whaler Super Sport, Merc 40hp.....	\$16,900

CRUISERS & CUDDY CABINS

52' '08 Sea Ray 52 Sedan Bridge, T/QSM-11 Cummins Dsl.....	\$536,900
27' '19 Chaparral 270 Signature, Volvo Penta V8 300 DP, gen.....	\$114,900
23' '11 Crownline 236SC, Merc 350 Mag BIII, Loadrite galv roller trl.....	\$27,900

PERSONAL WATERCRAFT

2016 Sea Doo GTR 215, w/trailer.....	\$9,500
--------------------------------------	---------



AUTHORIZED
PARTS &
SERVICE



NOW IS THE TIME TO BUY!

OPEN 7 DAYS A WEEK



FOUR WINNS



KW
KEY WEST



Scout
Discover More...



**Great Selection of
Pontoons in Stock!
Call for Info!**



G3 Boats



**Need a Trailer?
We Have Them
In Stock!**

YAMAHA BUILT TO LAST

410.287.8280

ANCHOR
BOATS
North East, Maryland

www.AnchorBoat.com

448 MAULDIN AVE | NORTH EAST, MD 21901

Parts & Service
General Boat Repairs
High & Dry Boat Storage