

Free!



The

Swamp Dog®



Advertiser Index
Page 16

CHESAPEAKE BAY EDITION

Published Every Other Week • Distributed in Maryland, Delaware, Southern Pennsylvania and Virginia

POWERBOATS & SAILBOATS ...Including Marine Services

**Beacon Light Marina**

YAMAHA SALES • SERVICE • PARTS
Factory Certified Technicians

825 Bowleys Quarters Rd. | Middle River, MD 21220
410-335-6200
beaconlightmarina.com | sales@beaconlightmarina.com

YEAR ROUND DEMO RIDES



**YAMAHA**
Revs Your Heart®

CALL TO QUALIFY



29' 1" 2009 WORLD CAT 29EC, Suzuki DF250s, (2) Raymarine E80 chartplotters, 4kw radar, M280 Xducer, SmartPilotX10, Garmin94sv, Taco 380s CF, 3 axle aluminum trailer incl, **\$119,000**, 609-892-6656, Heroshimaone@gmail.com 150765



29' 1987 AQUASPORT TOURNAMENT MASTER, T/350hp Mercs, VHF, Raymarine radar/chartplotter, Garmin DF, Bluetooth stereo, new canvas top, brand new cushions, in great shape, turn key, new parts call for more details, **\$18,500**, 908-461-3372, frankguariglia@aol.com 150781



27' 2000 SPORTCRAFT 261, 350 Chevy, dual propellers, elects included, 2016 Load Rite trailer, bay ready
\$17,000
304-671-3054,
carolyn.tricounty@outlook.com

150074



30' 2001 REGAL COMMODORE 2660, T/Merc I/O 4.3L BIII, excellent condition, original owner, sleeps 6, all avail options, 3-axle tri, SS props, new anchor windlass, **\$25,900**, 720-373-0415, Olson@OlsonEtc.com 150085



20' 2007 MALIBU WAKESSETTER VTX, Indmar Monsoon, trailer included, flawless vinyl, perfect pass cruise control, bimini top, D/A Malibu IB tri, **\$12,000**, 678-753-8906, hbh250250@gmail.com 150632

Annapolis, MD • St. Michaels, MD
Deltaville, VA • Woodbridge, VA
Delaware City, DE

CONTACT US TODAY!

info@curtisstokes.net
410.919.4900

**CURTIS
STOKES**
& ASSOCIATES

www.curtisstokes.net

1-888-843-1585 • Private Boat Information on Page 18



YAMAHA

Revs Your Heart®



Beacon Light
Marina

825 Bowleys Quarters Rd. | Middle River, MD 21220

410-335-6200

beaconlightmarina.com | sales@beaconlightmarina.com

WITH SO MANY WAYS TO HAVE FUN ON A YAMAHA,
It's easy to find yours at Beacon Light Marina



**Rt. 113 Boat Sales
and
Service**



Selbyville, DE 302-436-1737
www.Rt113BoatSales.net

**TAX
FREE**

COBIA
20 to 35 Feet

302-436-1737



**QUALITY IS
MORE AFFORDABLE
THAN YOU
THINK!**

PATHFINDER
ANGLER DRIVEN

In Stock! 2005 - 2200 - 2600

NOBODY Beats My Deals!




Cobia 201 CC - \$44,713*
F150 Yamaha



Cobia 220 CC - \$53,982*
Twin F200 Yamaha



Cobia 237CC - \$69,990*
Twin F150 Yamaha's



Cobia 301 CC - IN STOCK!
Twin F300 Yamaha's - Digital



Cobia 320CC - INSTOCK!
Twin F350 Yamaha's - Digital



Cobia 350 CC - IN STOCK!
Triple F300 Yamaha's - Digital
GARMIN Command



Repower

**150hp
to
425hp**



**BOAT TRAILERS
at
Wholesale
Pricing!**



YAMAHA

**MASTER YAMAHA TECHNICIAN
ON STAFF**

Repower with Yamaha's Unmatched
Reliability...TAX FREE!

* See store for Options included and details on Pricing

SUPER SUMMER SALE!



Huge Selection of Pontoons!



Delaware has
NO SALES TAX!
3 GREAT LOCATIONS!



302-945-2254 • 32606 DuPont Blvd Dagsboro, DE 19969
f 302-999-8735 • 411 S. Maryland Ave. (Rt 4) Wilmington, DE 19804
443-995-3785 • 3033 Kent Narrows Way South, Suite 3 Grasonville, MD 21638

SUPER SUMMER SALE!



Boats in Stock & Ready To Go



JEANNEAU



9.0 Leader CC



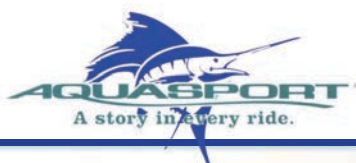
10.5 Leader



695 NC Sport



895 NC Cruiser



2100 CC



2300 CC



2500 CC

BLACKFIN

SEVFOX



212 CC



226 Traveler



328 Commander




Delaware has
NO SALES TAX!
3 GREAT LOCATIONS!



302-945-2254 • 32606 DuPont Blvd Dagsboro, DE 19969

f 302-999-8735 • 411 S. Maryland Ave. (Rt 4) Wilmington, DE 19804 t

443-995-3785 • 3033 Kent Narrows Way South, Suite 3 Grasonville, MD 21638



**YOUR
ENJOYMENT
MADE EASY**

GEICO[®]
FOR YOUR BOAT

Get a GEICO quote for your boat and, in just 15 minutes, you'll know how much you could be saving. If you like what you hear, you can buy your policy right on the spot. Then let us do the rest while you enjoy your free time with peace of mind.

geico.com/boat | 1-800-865-4846

Some discounts, coverages, payment plans, and features are not available in all states, in all GEICO companies, or in all situations. Boat and PWC coverages are underwritten by GEICO Marine Insurance Company. In the state of CA, program provided through Boat Association Insurance Services, license #DH87086. GEICO is a registered service mark of Government Employees Insurance Company, Washington, DC 20076; a Berkshire Hathaway Inc. subsidiary. © 2020 GEICO 20_206641

ALMARS

We Are A Full Service, Premier Mercury Outboard Repair Center! Let Our Certified Mercury Technicians Service Your Mercury Motor Needs!

LEFTOVER VERADO SALE!



We Now Offer **INJECTOR SERVICE** with ONE Day Turnaround!

100's of Used Cowllings In Stock! Call for Availability!

2018 250hp
XXL Opti • \$15,995

250XL PRO
VERADO 15,995
Only 1 Avail

REMANUFACTURED OUTBOARD ENGINE SALE!

90hp - 250hp 2 Year Warranty
Starting As Low As \$5,495 Call for Details!

**CALL US
FOR GREAT
DEALS ON
NON-CURRENT
POWERHEADS!**

**Call us for current pricing new current and noncurrent outboards
NO SALES TAX IN DELAWARE!**

701 Washington St., New Castle, DE

302-328-8541
www.almarsoutboards.net

All prices good
while supplies last!

HOURS: Monday - Friday: 8am - 5pm
CALL FOR GREAT PRICING ON NEW & USED MERCURY OUTBOARDS

NO HIDDEN COSTS
NOT RESPONSIBLE FOR TYPOGRAPHICAL ERRORS



Pricing includes all rebates.

**YES!!!!
WE ARE OPEN
FOR BUSINESS
8AM-5PM
MONDAY-FRIDAY!**

RETAIL REBATE THRU JUNE 21ST!

Take Advantage
While it Lasts!

2.5-30hp Outboard Engines
will be Eligibly for A
Retail Factory Rebate!

Also Includes A
6 Year Warranty!!!



HORSEPOWER CONSUMER
 REBATE

2.5hp-3.5hp	\$50
4hp-5hp-6hp	\$75
8hp-9.9hp	\$100
15hp-20hp	\$125
25hp-30hp	\$200

Call for Details

Rebates only apply to in stock motors



Worldwide Yacht Sales | Yacht Charters | New Yacht Construction



1976 42' Bruno & Stillman - \$145,000
Jason Hinsch - 410.507.1259



1995 33' Sea Ray - \$39,000
David Robinson - 410.310.8855



1980 33' Bertram - \$57,000
David Robinson - 410.310.8855



2000 33' Bayliner - \$59,500
Mary Catherine Ciszewski - 804.815.8238



1990 32' Luhrs - \$54,000
Anthony Sayo - 757.427.4042



2001 30' Pursuit - \$79,900
David Robinson - 410.310.8855



1999 29' Monterey - \$19,900
Mike Clark - 703.203.1893



2017 25' May-Craft - \$79,000
David Robinson - 410.310.8855



2006 23' Parker - \$36,000
Mike Clark - 703.203.1893



1952 23' Chris-Craft - \$39,000
David Robinson - 410.310.8855



1998 20' Chaparral - \$16,400
David Robinson - 410.310.8855



1982 19' Custom - \$5,990
Bill Boos - 410.200.9295

To see more details about these and all other yachts around the globe, please visit our website below.

Annapolis, MD • St. Michaels, MD • Delaware City, DE • Deltaville, VA • Woodbridge, VA
Telephone: 410.919.4900 • Email: info@curtisstokes.net

www.curtisstokes.net

Sassafras Harbor Marina Yacht Sales



888-221-5022

1 George Street, P.O. Box 68
Georgetown, MD

sassafrasharbormarina.com



41' Hatteras Convertible '67
T-Detroit Diesel, Fish/Cruise
\$69,000



39' Silverton 392 MY '99
Roomy interior, nice condition!
\$89,900



37' Sea Ray 370 Sedan '95
T-Merc. 7.4, Well maintained
\$49,500



37' Silverton Convertible '90
T-Crusader, Nice interior
\$20,500



36' Carver 3608 '90
T-Merc. Nice condition
\$43,900



35' Sea Ray 350 Sundancer '91
T-Merc. Clean, well maintained
\$29,700



26' Sea Ray 260 Sundancer '06
MerC. B-III, low hours
\$42,500 w/trailer



26' Sea Ray 260 Overnighter '99
Merc 7.4, Ready to go!
\$22,900 w/trailer, new tires



23' Crownline 236SC '16
Merc. 6.2 B-III Exc. Cond.
\$56,000



22' Donzi 22Classic '99
MerC. 7.4 B-I, Canvas cover
\$22,000 w/yard trailer



22' Sea Ray 225 '06
Merc. 5.0 w/new Bravo III in '18
\$23,500 w/yard trailer



21' Stingray 205CX '08
Volvo Penta 5.0 Cuddy cabin
\$16,900 w/trailer

56' Carver 564 CMY '02.....\$268,000

42' Chris Craft 426 '86.....\$49,900

38' Carver Santiago '94.....Sale pending

32' Sea Ray 320 Sundancer '05.Sale pending

24' Wellcraft Martinique '03.....\$14,800

20' Sea Master 208FF '98 w/trl...Sale pending

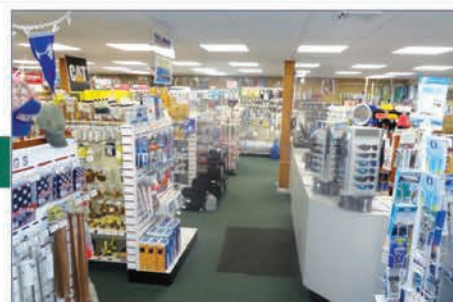
13' Boston Whaler '16 w/trl.....\$13,500



Sassafras Harbor Marine Store

OPEN 7 DAYS A WEEK!

*The Heron's Nest
Gift Shop*



Marina: 410-275-1144 ~ Floating Dock Slips Available ~ Store: 410-275-2666

ANNAPOLIS CRUISAIR, INC.

Family Owned & Operated for Over 50 Years

SALES • SERVICE • INSTALLATION



U-LINE
U-Line Ice makers
110/115vAC

We will meet or beat
any competitive
price quote for
these products!

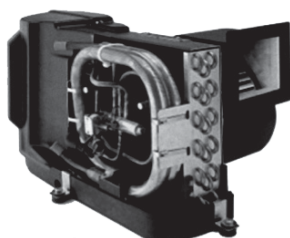


Marine Diesel
Heaters

Espar

Cruisair®

New Turbo
Air Conditioners • Heat Pumps



• We Have • BREATHE EASY AIR FILTERS

Sentry™
Cruisair

BATTERY
CHARGERS



SAFEST
CHARGER
ON THE
MARKET!

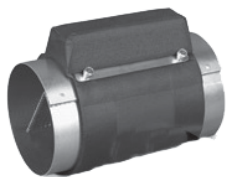
**Eskimo Ice
600 Ice Pump**

Provides up to 600 lbs. of fresh
ice in a day from your ships
water tank.



STINKY BOAT?

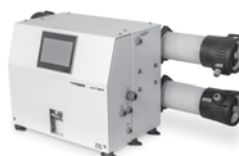
We Have **NEW**
Breathe Easy
Air Purifiers



➔ **DOMETIC**

SPOTZERO®
Fresh Water Reverse Osmosis

Water Purification Systems



Vitrifrigo
REFRIGERATORS

WAECO
Adler/Barbour®



MARINE AIR SYSTEMS®

AIRRRRRRRRR

by Dometic GROUP



KOHLER.

- Generators -



Fischer Panda

Onan

2124 Renard Ct. • Annapolis, MD

(410) 224-0970 • (410) 974-6136 • Fax (410) 224-0050

www.annapoliscruisair.com

New Dealer for:
SEA PRO
the next wave



208 Bay

CAROLINA SKIFF



23 Ultra

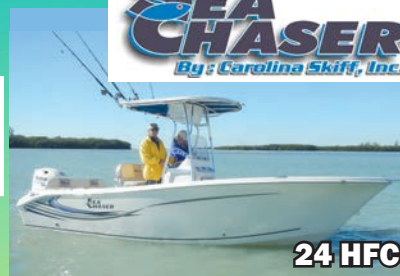
ALUMA Craft



Powered by:

SUZUKI
MARINE

SEA CHASER
By: Carolina Skiff, Inc.



24 HFC

DANNY'S MARINE
(410) 228-0234 • www.dannysmarine.com
Located on US Rt 50 (mile marker 86) • Chateau Drive near Linkwood, MD
dannysmarine@comcast.net

Limited Time Offers. Not all models qualify. See Participating Suzuki Marine dealer for details or visit www.suzukimarine.com
©2018 Suzuki Motor of America, Inc.

**Fishin' Boats From
Fishin' Folks**

**DISTANCE YOURSELF FROM EVERYTHING
BUT THE FISH!**



\$29,995

2004 Grady-White Tournament 205
Yamaha F150TXR



\$25,000

1995 Grady-White 25 Sailfish
2006 Yamaha F250 & LF250, 2007 Load-Rite Trailer



\$24,000

2003 Robalo 235 Walk Around



\$19,900

1996 Pro-Line 231 Walk Around
2005 Yamaha F250TXRD, 2004 Load-rite Roller Trailer



\$9,895

1999 Hydra-Sports 230WA
1999 Johnson J200PXE, EZ Load Trailer

May-Craft
The Perfect Craft for Your Sport
KW
KEY WEST
G3



**GOOTEE'S
MARINE**

South of Cambridge On Maryland's Eastern Shore
1439 Hooper's Island Road, Church Creek, Maryland

800-792-0082
Gootees.com

Upper Chesapeake Yacht Sales

John Curry • (610) 299-3598
www.upperchesapeakeyachtsales.com



42' 2016
Regal Sport
Coupe
\$419,900



Fully loaded high end Regal with just 70 hours on Volvo 400hp Diesel motors and IPS drives. Boat was delivered new in April of 2018 which is start of warrantee period. Buy now and be ready for Spring! We own this boat and trades are considered!



Reduced!

74' '16 Spencer Sportfish,
total refit, amazing boat,
\$6,495,000



Reduced!

43' '07 Silverton Sport Bridge,
hardtop, Diesel IPS drive,
loaded, mint, \$195,900



Trades Considered!

42' '16 Regal 42SC,
T/Volvo Dsls with IPS, mint,
loaded, \$399,900



40' '93 Sea Ray 400 Express,
T/454 V-Drives, gen, AC,
\$38,500



37' '88 Hunter Legend Sloop,
great electronics, nice,
\$39,900



36' '78/'07 Jarvis Newman
FB Cruiser, 330hp Cummins,
gen, AC, mint, \$139,900



Reduced!

31' '69 Chris Craft Commander,
hardtop, 10 hours on
270hp Crusaders, AC,
restored classic, \$19,900



31' '13 Bertram Custom
Sportfish, like new and \$200K
below replacement, \$395,000



24' '00 Seaswirl WA,
hardtop, '17 Suzuki 200hp,
'13 trailer, nice, \$22,900



24' '80 Lyman Sportsman,
220hp 1B, restored classic, mint,
\$14,900

24' '96 Sea Ray Sundancer, 5.7L Merc, clean, trl..... \$14,900
 28' '04 Sea Ray 280 Sundancer, T/4.3L, gen, AC, mint..... \$50,000
 28' '78 Cape Dory Sloop, Diesel, great starter boat \$14,900
 30' '84 Catalina Sloop, diesel, great starter boat..... \$13,500

31' '79 Bertram Flybridge, T/330hp Cummins, AC, very nice \$Call
 35' '88 Beneteau Oceanis Sloop, Volvo Dsl, AC, elec fridge, nice... \$28,900
 35' '76 Ericson Sloop, Volvo Diesel, upgrades in process \$14,900
 41' '00 Sea Ray Sundancer, T/380 Merc V-Drives, AC, very nice \$92,500



**Expect The Same
Superior Service From Our
Brokerage That You Get
From Our Marina**

BOAT SALES & BROKERAGE
 • Financing & Insurance Available •

WORTON CREEK MARINA

23145 Buck Neck Road • Chestertown, MD 21620
(410) 778-3282

CLARKS FLOATS

PIER & PILE

443-871-0436 • CLARKSFLOATS@GMAIL.COM

CLARKS FLOATS PIER & PILE

- Floating Docks
- Pile Driving
- Re-Decking

MMCLB #390 I



8x16 KAYAK DOCK



8x12 KAYAK ACCESS

**Any Custom
Size Float
Available!**



Kayak Floats
Dock Sections • Work Rafts
Swim Platforms • Gang Planks
SS Fasteners • #1 P.T. Lumber
Perma Float Floats
Composite Decking

Deale, MD



Goldsborough's Marine



709 W. Main St., Crisfield, Maryland

Ph.# 410-968-0852 • Email: merc71@verizon.net

"Where Happiness Is Just A Boat Ride Away!"

Roughneck
by LOWE

Father's Day Sale



2.5 MH.....	\$999
4 MH.....	\$1,410
9.9 MH.....	\$2,475
9.9 MLH.....	\$2,495
15 MH.....	\$2,845
20 MH.....	\$3,090
20 MLH.....	\$3,095
25 MLH.....	\$3,160



YAMAHA



**Outboard Sale
Starting at \$999**



\$18,990

2019 C-Hawk 16FT CC
Yamaha 50 ELPT HT 4-stroke
EZ Loader galv trailer

The Best Ships Store on Delmarva • **Open All Year** • www.crisfield.com/gold

Maryland's Oldest C-Hawk Dealership • Maryland's Largest Lowe Boat Dealer

SAILING ASSOCIATES, INC.



**1st year
and referral
INCENTIVES!**

Full Service Marina
on the scenic
Sassafras
Slips & Moorings
Sail and Power

410-275-8171
www.sailingassociates.com



732-691-1216 www.DRBMarineLLC.com



MARINEMAT
Marine Decking Solutions

MARINE TECHNICIAN TRAINING

RIDE THE CREST
to CAREER SUCCESS



**ENROLL FOR TRAINING TO BECOME A PROFESSIONAL
MARINE SERVICE TECHNICIAN**

Our in-depth program includes training in: Seamanship, AC & DC Electrical, ABYC Standards, Air Conditioning & Refrigeration, Mechanical Systems, Stern Drives/Transmissions, Computerized-Fuel Injected Inboard and Outboard Engines, Inboard, Outboard and I/O Systems, Electronic Diesel Engines (Cummins QSB 5.9 380 HP Common Rail Trainer), Fiberglass & Gelcoat Repair, Plumbing and Sanitation Systems.

Financial Aid for those who Qualify • Career Placement Assistance

CALL NOW 866-905-4278
www.autotraining.edu
900 Johnsville Blvd., Warminster, PA 18974



Supported by
MERCURY & **HONDA**
MARINE
with Training Materials & Equipment

For required program disclosure information, please go to www.autotraining.edu/consumerinformation.

VENTURE

TRAILER SALE

Buy At Our Cost
Over 25 Trailers
In Stock

**MUST
GO!**

We are overstocked with new trailers
sizes from 22' to 26'

All aluminum with galvanized wheels!

GRANDE YACHTS
INTERNATIONAL

Grasonville, MD

410-286-1350

CALL NOW
410-686-6998



WEST SHORE
YACHT CENTER
ESSEX, MARYLAND

TROPICAL
POOL

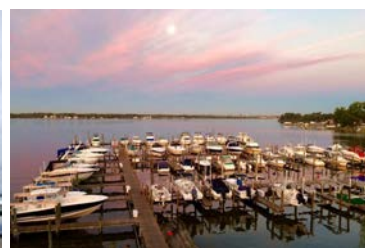
BEST LIFT
SLIPS ON
THE BAY

CLIMATE
CONTROLLED
BATHROOMS
AND SHOWERS

GET YOUR LIFT AT

WEST SHORE YACHT CENTER

LIFT SLIPS AVAILABLE FOR BOATS UP TO 20,000LBS
3 MILES TO THE BAY WITH **NO SPEED LIMIT!**



Call Today to Reserve Your Slip • 410-686-6998
1100 E. Riverside Ave, Essex, MD 21221

LINK'S OUTBOARD

Certified Outboard Remanufacturing Center

Save \$Thousands\$ Over

All Rebuilds Come
With Up To A
3 Year Warranty

Buying New

"The
East Coast Leader
in OB's"

WE OFFER A FULL SERVICE REPAIR FACILITY SPECIALIZING IN:

**MERCURY • JOHNSON
EVINRUDE • YAMAHA**
25 YEARS OF OUTBOARD EXPERIENCE

NO SALES TAX IN DELAWARE

4 ALBE DRIVE, NEWARK, DELAWARE - 302-368-2860
www.linksoutboard.com

ADVERTISERS INDEX

ALMARS.....	7	GEICO.....	6
ANCHOR BOATS.....	24	GOLDSBOROUGH'S MARINE.....	13
ANNAPOLIS CRUISAIR.....	10	GOOD AUTOMATIC WINDLASS.....	22
ATC AUTO/MARINE TRAINING.....	14	GOOTEE'S MARINE.....	11
BEACON LIGHT MARINA.....	2	GRANDE YACHTS.....	15
BOAT DOCTOR.....	22	LINKS MARINE.....	15
BOAT LIFTS UNLIMITED.....	16	Rt 113 BOAT SALES.....	3
CLARKS FLOATS.....	13	RUDY MARINE.....	4-5
CURTIS STOKES.....	8, 17	SAILING ASSOCIATES.....	14
CUSTOM REBUILT CARBURETORS.....	22	SASSAFRAS HARBOR MARINA YACHT SALES..	9
DANNY'S MARINE.....	11	UPPER CHESAPEAKE YACHT SALES.....	12
DRB.....	14	WATERFRONT.....	23
EGG HARBOR ROPES.....	22	WEST SHORE YACHT CENTER.....	15

THE LARGEST LOW PROFILE BOAT LIFT MANUFACTURER IN THE USA

**CALL
US FOR
YOUR LOCAL
DEALER!**



Choose The Right Boat Lift, Choose

- Low Profile Design • Low Maintenance • 2/5 Yr Warr.
- Outside Walkway • Galvanized Steel Construction
- Aluminum Cradles Available • Capacity 800-40,000 lbs. www.magnumlift.com

MAGNUM

BOAT LIFTS

Personal Watercraft Lifts

Fully
Insured

BOAT LIFTS UNLIMITED

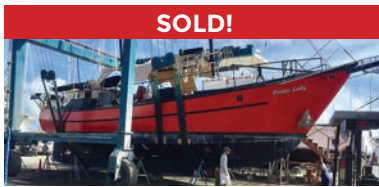
410-674-3100 • 1-800-268-5911

**WE SERVICE
MOST MAKES
OF BOAT
LIFTS!**

Located in Odenton, MD, this full-service boat lift manufacturer has a network of over 180 distributors serving the Chesapeake Bay, Great Lakes and Atlantic Coast with Magnum Boat Lifting Products. Boat Lifts Unlimited is dedicated to customer satisfaction through prompt, courteous service on most existing boat lifts and timely installation of new boat lifts. Quality materials, attention to detail and innovative design have made Boat Lifts Unlimited one of the largest boat lift manufacturers in the U.S.



Worldwide Yacht Sales | Yacht Charters | New Yacht Construction



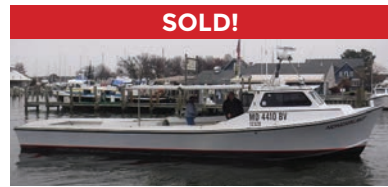
SOLD!

72' Trade Rover



SOLD!

50' Chris-Craft



SOLD!

48' Evans Boats



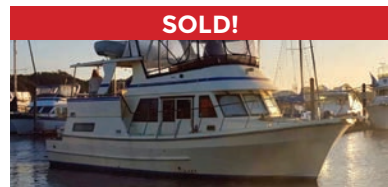
SOLD!

44' DeFever



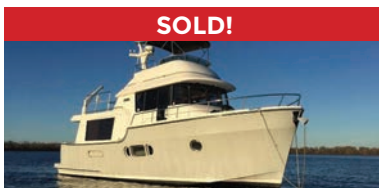
SOLD!

44' Gulfstar



SOLD!

42' Fu Hwa



SOLD!

40' Fathom



SOLD!

40' Hinckley



SOLD!

36' C&C



SOLD!

36' Bristol



SOLD!

32' Eagle



SOLD!

26' Sisu

List your boat with us and join our **SOLD list!**

To see more details about these and all other yachts around the globe, please visit our website below.

Annapolis, MD • St. Michaels, MD • Delaware City, DE • Deltaville, VA • Woodbridge, VA
Telephone: 410.919.4900 • Email: info@curtisstokes.net

www.curtisstokes.net

FREE LISTING WITH PHOTO ON THE INTERNET

PRIVATE AD RATES

- ☐ 3 ISSUES NO PHOTO CLASSIFIED..... \$39⁰⁰
- ☐ 3 ISSUES WITH COLOR PHOTO
WITH COLOR PHOTO ON INTERNET..... \$59⁰⁰
- ☐ INTERNET FEATURE ADD ON 4 WEEKS
AVAILABLE WITH AD PURCHASE ONLY!
ON THE SALTY DOG HOME PAGE..... \$49⁰⁰
- ☐ FRONT COVER..... \$40⁰⁰
- ☐ PUBLICATION MAILED TO YOU..... \$2⁰⁰

TOTAL

FRONT COVERS ARE BASED ON AVAILABILITY

- ☐ CHECK ☐ MONEY ORDER ☐ DISCOVER
☐ MASTERCARD ☐ VISA ☐ AMERICAN EXPRESS

CC#

Expiration Date _____ Security Code _____

Signature _____

Advertiser's Name

Address

Phone

Where did you pickup "The Salty Dog"?

Store _____ Town _____

Fill out the description form below, up to 125 characters (including spaces & punctuation) of advertising. Please put one character per space beginning with the motor. Include a check, money order or credit card, and mail to us with a good quality COLOR photograph of your boat. Photos will only be returned if accompanied by a self-addressed stamped envelope.

AD COPY

FT. _____ YR. _____

MANUF. / MODEL _____

MOTOR _____

ACCESSORIES _____

LOCATION OF BOAT _____, _____ State _____ Zip Code _____

PRICE _____

PHONE # _____

EMAIL _____

**Send to: The Salty Dog
254 Brick Blvd • Suite 1
Brick, NJ 08723**

888-843-1585

Fax (732) 477-9000 • Email: info@thesaltydog.com

No refunds after Ad is processed. • Advertiser will be responsible for \$20 fee on returned checks.

YOUR BOAT LISTING CAN ALSO BE SUBMITTED ON THE INTERNET www.thesaltydog.com

SPECIAL FEATURES

PRIVATE BOAT ADS Pgs. 19-21

SAILBOATS Pg. 21

SUBSCRIPTION CHESAPEAKE BAY

SALTY DOG is published Bi-weekly 25 times a year.

Papers are mailed FIRST CLASS. Your first issue will be mailed within 1 week.

To subscribe, just fill in the amount of issues and multiply by \$2.00*

No. of issues _____ x \$2.00* = Total Cost _____

☐ CHECK ☐ MONEY ORDER ☐ MASTERCARD ☐ VISA

Credit Card No. _____

Exp. Date _____

Signature _____

Name _____

Address _____

City _____ State _____ Zip _____

Telephone _____

*Canada Subscription Add 10% - Bermuda Subscription Add 30%
Outside the Continental USA Add 50% • Credit Cards Only Outside USA



Mail To: THE SALTY DOG, 254 Brick Blvd • Suite 1, Brick, NJ 08723



A Bi-weekly Publication for
Powerboats, Sailboats, Marine
Equipment, Supplies, Services,
Waterfront and Photo Ads

For More Info on Display Ads or Internet Listings

Call 888-843-1585 • Fax (732) 477-9000

info@thesaltydog.com • Mon.- Fri. 9:00 am to 4:00 pm

**42' 1975 GRAND BANKS
ALL FIBERGLASS CLASSIC,**
(2) 135hp John Deere, 8kw Wester-
beke diesel gen, all fiberglass, radar,
depth recorder, stereo, new bimini
top, on land, bottom painted
\$65,000 • 443-534-9249
annapolis_outboard
@yahoo.com

See Color Photo on the Internet



38' 2006 FORMULA 382 FASTEC, T/Merc 525 EFIs,
ITS extension boxes, custom graphics, custom trailer,
\$139,000, 732-840-1100 **sales@brennanboat.com**
148280

See Color Photo on the Internet



31' 1980 BERTRAM FLYBRIDGE, T/6-cyl Cummin
Dsls, custom windows, reasonable offers accepted,
JUST REDUCED! \$55,000 OBO, 908-309-4016
almarmarine1@gmail.com 148434

See Color Photo on the Internet



40' 2006 Baia 405, Twin 496 HO, Lift kept, well
maintained, Generator, A/C, full cabin, hydraulic
steering, \$89,900, Call 732-477-7039, 848-333-7766
jeffrey158@aol.com 150075

See Color Photo on the Internet



37' 2013 SEA RAY 370 VENTURE, T/Merc Verados,
black hull, AC/HT, gen, bow thrusters, **\$209,995, 732-**
840-1100 sales@brennanboat.com 149753

See Color Photo on the Internet



30' 2001 REGAL Commodore 2660, Twin 4.3 Merc i/o
Bravo3, orig owner, **\$25,900, 720-373-0415 Olson@**
OlsonEtc.com 150085

See Color Photo on the Internet



39' 2018 TIARA 39 OPEN, T/Cummins Dsls, loaded,
full electronics, like new, **\$680,000, 609-927-1175**
amury@cjamyachtsales.com 150797

See Color Photo on the Internet



37' 1967 EGG HARBOR Sedan, 2X 6BT5 Cummins, Excellent
Condition!!! Beautifully restored and ready to go! Twin Cummins
Diesel engines, Lectra San, 80 gal fresh water tank, **\$30,000,**
443-221-9732 Azandrea1217@gmail.com 149384

See Color Photo on the Internet



30' 1988 SEA RAY SUNDANCER, repowered T/5.7L
V8, 50 hours, new manifolds and risers, new gimbal
boots, new bearings, runs great, **\$9,000, 908-868-6026**
reeldealusa@verizon.net 150159

See Color Photo on the Internet



39' 2016 Yellowfin CENTER CONSOLE, Triple 300hp
Yamahs, low hours, **\$349,000 OBO, call or text,**
908-489-5098 seaportpics@gmail.com 150182

See Color Photo on the Internet



35' 2017 SEA RAY 350 SLX, T/Mercruiser 6.2L 300hp,
106 hours, lift kept, **\$199,900, 609-368-1141 dsmith-**
shys@gmail.com 149316

See Color Photo on the Internet



30' 1973 PACEMAKER Sport fish, 2-310 HP FWC, 750
Hrs. Runs Good. , **\$8,000, 443-602-0003 Bunnyboat@**
verizon.net 150829

See Color Photo on the Internet



39' 1999 CARVER BOATS 356, Dual 454 fuel injected,
GPS, fridge, gen, AC, kept on boat lift, **\$70,000, 301-752-**
0397 301-752-0397@thesaltydog.com 150621

See Color Photo on the Internet



31' 2012 SEA RAY 310 SUNDANCER, T/5.0L Mercs,
345 hours, gen, loaded, **\$114,900, 732-267-2283**
info@hoffmansmarina.com 149755

See Color Photo on the Internet



28' 2012 CHRIS CRAFT LAUNCH, T/Merc 5.7L Bllls,
sharp silver hull, lift kept, no bottom paint, original
owner, **\$95,995, 732-840-1100 sales@brennanboat.**
com 149752

39' 1964 OWENS Cabin Cruiser,
Chrysler, Boat kept under shed its
entire life. Good condition.
Engines need work but
would be a great liveaboard
\$3,000
804-529-6851
krentz2@verizon.net

See Color Photo on the Internet



31' 2007 REGAL 3060 Windows Express, Volvo
Penta 5.0, Looks new. 1 owner, low hrs. stored inside,
many extras. **\$62,000, 717-515-0168 watercruiser@**
comcast.net 150217

See Color Photo on the Internet



28' 2003 GRADY-WHITE 283 RELEASE, Dual Yamaha
F225hp OBs, Vantage T/A galv trailer, apxox 1100 hrs,
radar, GPS, echo finder, CP/FF, VHF, t-top, **\$59,900, 732-**
929-1711 Tom@hobbylobbymarine.com 147078

See Color Photo on the Internet



28' 2009 SEA RAY Sundeck 280,
MerCruiser 350 MAG w/Bravo III,
172 hours, trailer is included, lots of
extras, water ready boat.

\$26,500
337-900-8913
jmcille100@gmail.com

150782

See Color Photo on the Internet



26' 1984 BERTRAM EXPRESS, 5.7L FWC Merc,
like new, fully restored, **\$99,000, 917-817-5084**
esproviero@gmail.com 149217

See Color Photo on the Internet



26' 1995 GRADY-WHITE CENTER CONSOLE, Twin
200hp Mercury Optimax, **\$30,000, 609-693-9423**
tidesendmarina1@gmail.com 149218

See Color Photo on the Internet



25' 2018 GRADY-WHITE
257 FISHERMAN,
REDUCED TO SELL!!!!

T/F150 Yamahas, low hrs, 7/23 war-
ranty, factory options, Garmin GPS radar,
Icom 504 radio, outriggers, fish inshore/
offshore, family cruising, water skiing, like
new, winterized ready for Spring 2020,
BRING OFFER! \$119,000
Call 302-226-3734
or 302-218-9325

144975

See Color Photo on the Internet



27' 2016 WORLD CAT 2780 GLACIER BAY EDITION, hard-
top, T/150hp Yamaha 4-stroke, full electronics, **\$149,900,**
732-899-8010 sales@schraderyachts.com 150894

See Color Photo on the Internet



26' 1992 FORMULA 26PC, trailer - 850 hours (1) 454 cu Mercruiser - new
lower Bravo 3 unit OEM, new gimbal housing assembly OEM, manifolds and
risers, entire Coosa transom, hv oil pump & pan. See internet ad for complete
details. **\$25,000, 302-249-9745 paddwheel@comcast.net 150891**

See Color Photo on the Internet



24' 2009 SEA RAY 240 SUNDANCER, Merc 5.0L
Bravo III, lift kept, no bottom paint, **\$39,995, 732-840-**
1100 sales@brennanboat.com 150796

See Color Photo on the Internet



27' 2003 Baja 275 BOSS, 496/425,
turn key boat excellent condition
425HP new manifolds and seawater
pump no rips or tares trailer included,
\$32,000
201-951-9272
rprim502@gmail.com

150133

See Color Photo on the Internet



26' 1983 SHAMROCK PILOTHOUSE, repowered in
2016, Yamaha 230hp Dsl, 700 hrs, ORs, dual anchors,
SWWD, navigation lights, **\$16,900, 908-489-5098**
seaportpics@gmail.com 147989

See Color Photo on the Internet



24' 1998 SHAMROCK 246 CC, 350 Chevy, low hours, runs
great, trailer, new Furuno GP1971F FF/1kw transducer,
outriggers, **\$20,000, 732-865-5170 kneri7106@gmail.com 150896**

See Color Photo on the Internet



23' 2016 PARKER 2300 SPECIAL EDITION, 200hp
Yamaha 4-stroke, electronics, trailer, **\$45,500, 732-899-**
8010 sales@schraderyachts.com 150895

See Color Photo on the Internet



27' 1998 GRADY-WHITE 272 SAILFISH, Dual 1998 Mercury 225hp
Optimax OBs, hardtop w/encl, electric head, battery charger, livewell,
salt water washdown, GPS/map/sounder, stereo, windlass, **\$29,900,**
732-929-1711 Tom@hobbylobbmarine.com 146726

See Color Photo on the Internet



25' 2017 Parker Boats 2520 XLD,
Twin F200 XCA, 25 Hours, Bow
Thruster, Pwr Steer,
2nd steerstation, Auto tabs,
Top of line Raymarine electronics.
\$120,000
610-248-5089
mpasquarelli@msn.com

148053

See Color Photo on the Internet



23' 2002 TROPHY 2352 WA, 5.7L Merc I/O, marine
head, baitwell, 2004 Tidewater tandem trailer, **\$14,900,**
908-309-4016 almarmarine1@gmail.com 150630

See Color Photo on the Internet

23' 1994 RINKER 236 Captiva Cuddy, Fun and Fast 1997 Mercruiser 454 MAG MPI (385hp) and 2010 Karavan dual axle bunk trailer., \$10,500, 202-255-6474 rcbv227@gmail.com 150887

See Color Photo on the Internet

21' 2017 BAYLINER 210, MERCURY 150, detailed and serviced, only 30 hours on boat and 150 Mercury outboard, Karavan bunk trailer, covers included., \$29,990, 856-298-3708 jimcollins55@hotmail.com 150166

See Color Photo on the Internet

38' 1989 ISLAND PACKET, Yanmar 44hp diesel, 338 hours, one owner boat, lightly used, \$112,500, 732-899-8010 sales@schraderyachts.com 144832

See Color Photo on the Internet

22' 2004 COBALT 226 BOWRIDER, 300hp Mercruiser 350 Mag, Bili, only 168 hours, bimini, excellent condition, \$25,000, 732-899-8010 sales@schraderyachts.com 150893

See Color Photo on the Internet

20' 2007 SEA DOO SPEEDSTER, T/215hp, serviced yearly, trailer, nice shape, \$15,500, 609-693-9423 tidesendmarina1@gmail.com 148278

See Color Photo on the Internet

36' 1968 TRI-MAR Trimaran, Volvo-3cylinder, all teak wood, Galley, head, sleeps 8-10, all sails, cushions, anchor, plenty of storage. Drafts 3 feet, 2 steering wheels, very comfortable sailing boat, \$16,000, 609-694-1731 lakefrontview@exed.net 140938

22' 2015 SWEETWATER PONTON,
115hp Yamaha, less than 100 hours, bimini, full cover and seat covers, GPS
\$22,500
410-778-2228

See Color Photo on the Internet

20' 2007 MALIBU Wakesetter VTX, Indmar Monsoon, Trailer included.
\$12,000
678-753-8906
hbh250250@gmail.com

See Color Photo on the Internet

32' 1986 SABRE 32 CRUISER/RACER, Westerbeke 21hp diesel, 3 separate cabins, sleeps 8, Navy Blue hull, \$26,000, 732-899-8010 sales@schraderyachts.com 148276

See Color Photo on the Internet

22' 2003 CROWNLINE 225 BR, 600 SCI Mercury Racing, 25 hours, repowered 2012, 70 MPH, kept indoors, FRESH WATER ONLY, trailer, mint, Offers Encouraged!, 215-259-1900 donvan@autotraining.edu 146425

See Color Photo on the Internet

18' 2000 BOSTON WHALER Dauntless, NEW 2017 YAMAHA 115HP MOTOR WITH UNDER 200 HOURS; 2-owners; well kept; New Sea Lion Trailer; Perfect fishing/cruise boat, \$24,000, 267-688-2484 jhanna@langan.com 150821

See Color Photo on the Internet

35' 1978 BRISTOL 35.5 RACER/CRUISER, center board sloop, 40hp Westerbeke FWC, \$24,900, 732-899-8010 sales@schraderyachts.com 148001

See Color Photo on the Internet

21' 2018 SPORTSMAN 212 OPEN, w/Offshore package, upgraded 200hp Yamaha, trailer, hardtop, GPS/plotter, FF, only 27.5 hrs, extended warranties!, \$59,995, 732-840-1100 sales@brennanboat.com 150795

See Color Photo on the Internet

18' 2000 BOSTON WHALER Dauntless, NEW 2017 YAMAHA 115HP MOTOR WITH UNDER 200 HOURS; 2-owners; well kept; New Sea Lion Trailer; Perfect fishing/cruise boat, \$24,000, 267-688-2484 jhanna@langan.com 150821

See Color Photo on the Internet

25' 1974 MACGREGOR Sailboat, 9.9 Johnson Extended shaft, MacGregor #MACF01680474, Title #229085, excellent condition, comes with mast, main and jib sails, retractable keel, outboard motor, complete with trailer. Selling due to owners health. \$4,750.00 OBO, 410-335-6813 rgconant@gmail.com 150442

See Color Photo on the Internet

21' 2019 KENCRAFT CC CHALLENGER OUTER BANKS, Yamaha F-200 XB 4-stroke, \$55,000, 732-929-1711 Tom@hobbylobbymarine.com 140921

TOHATSU 150HP
BFT 4-STROKE,
control and cables, tack & harness, key switch, water separator, aluminum prop
\$13,600
908-309-4016
almarmarine1@gmail.com



2019 28' COBIA 280 DUAL CONSOLE

T/Yamaha F250NCA 4-strokes, Demo Boat,
charger, steering, Optimus EPS for twin engines,
table/sun lounge forward, power sunshade,
kitchenette with fridge and freezer, stereo,
trim tabs, outriggers, battery charger, 4 batteries,
and much more

\$175,102 • 302-436-1737
joe@rt113boatsales.net

Marine Engines Inc.



Holliston, MA

REPLACEMENT ENGINES FOR

MERC - CRUSADER - VOLVO - PCM
OMC - GM - FORD - CHRYSLER

- LOW PRICES -
- HUGE INVENTORY -
- SAME DAY SHIPPING -

Crusader
ENGINES & PARTS

Power Pack
Left Hand & Right Hand
IN STOCK • CALL

NEW GM Marine Base Engines

3.0L (181 cu. in.)	\$2937	7.4L (454 cu. in.)	\$5575
4.3L (262 cu. in.)	\$3695	7.4L HO (454 cu. in.)	\$6399
5.7L (350 cu. in.)	\$2929	8.2L (502 cu. in.)	\$6559
5.7L (350 cu. in.) VORTEC	\$2929	- Call for More Information -	

Velvet Drive
TRANSMISSIONS



ZF/HURTH TRANSMISSIONS
New - Rebuilt - Take Outs - CALL

No Sales Tax Outside of MA

1-800-786-7639 • 1-800-RUNSNEW
www.1800runsnew.com

Get it Up®

and down automatically with a
Good® Automatic Windlass
Automatic Free-Drop
Rope/Chain Anchoring Systems

800-780-4655

Sales, Installation, & Service
Barnegat, NJ
www.goodwindlass.com

CAPTAINS LICENSE CLASS



USCG Approved Course & Test
No Exam at the Coast Guard

ONLINE COURSES AVAILABLE
CALL FOR MORE DETAILS

732-830-9285

www.captainslicenseclass.com

SAY YOU SAW IT IN THE SALTY DOG

DOMINION YACHT SALES

Seeking Self-Motivated Yacht Brokers

If you enjoy spending time
on the water, meeting successful new people,
making \$\$\$\$ while having fun...

1-888-314-5509 or
robert@dominionyachts.com

BOAT DOCTOR

**Inboard/Outboard
Repairs!**

**Call About Winterizing
& Shrinkwrap**

**Fast Quality
Service**

**25 Years
Experience**



240-528-1154

3410 Leonardtown Rd
Waldorf, MD 20601



WATERFRONT MARINE

#1 GOLL AVE, SOMERS POINT, NJ ~ 609-926-1700

281 PRINCETON AVE, BRICK, NJ ~ "Featuring Chaparral & Carver" 732-202-6961

2822 SOLOMON'S ISLAND RD, EDGEWATER, MD ~ 443-949-9041

Premium Brands ~ Exceptional Service

WWW.WATERFRONTMARINE.COM



Robalo R247 DC



Robalo R230



Chaparral 297 SSX



Carver Yacht 34 Coupe



Now In Stock!



280 OSK

- PREOWNED BOATS -



Located in Somers Point

24' '18 Chaparral 246 SSi,
6.2L Merc, Garmin, 63 hours, \$77,900



Located in Somers Point

26' '18 Chaparral 264 Sunesta,
350hp VOlvo, low hours, \$89,900



Located in Maryland

38' '06 Cruisers 385 Motor Yacht,
T/Volvo Dsls, 584 hours, \$147,900

BOWRIDERS & PONTOONS

33' '17 Chaparral 337 SSX, T/Merc 6.2L Axis	SOLD
30' '17 Chaparral 307 SSX, T/300hp Volvo	\$149,900
28' '14 Chaparral 284	SOLD
28' '16 Chaparral 284 Sunesta	\$79,885
28' '12 Chaparral 287 SSX, 8.2L	Pending
28' '15 Chaparral 287 SSX, Volvo Penta 430hp DP, loaded	Pending
28' '04 Chaparral 280 SSi	SOLD
27' '14 Chaparral 277 SSX, Volvo Penta 380 DP	\$79,900
26' '16 Four Winns H260	\$64,900
26' '09 Chaparral 264	Pending
26' '15 Monterey 264 FS	Pending
26' '05 Chaparral 260 SSi, Volvo Penta 8.1L 375hp	SOLD
26' '18 Chaparral 264 Sunesta	\$89,900
25' '19 Bennington Q Series, 300hp Yamaha	\$99,900
25' '06 Cobalt 250	Pending
24' '17 Chaparral 246 SSi, Volvo Penta 300hp DP	\$68,900
24' '11 Chaparral 244 Sunesta	Pending
24' '19 Chaparral 244 Sunesta	Pending
24' '18 Chaparral 246 SSi	\$72,900
24' '18 Chaparral 2430 VRX	\$68,900
24' '15 Chaparral 243 Vortex	\$49,900

23' '16 Manitou Oasis	Pending
23' '07 Monterey 234	Pending
22' '14 Bennington 2275 GCW, Yamaha F150, 2018 Load Rite trailer	Pending
22' '19 Monterey M22	SOLD
22' '06 Sea Ray 220	Pending
20' '11 Stingray 208 LR	Pending
20' '07 Cobalt Bowrider	Pending
19' '01 Chaparral 196 SSi	SOLD
19' '01 Chaparral 196 SSi	SOLD
18' '11 Hurricane 188	SOLD

CRUISERS & CUDDY CABINS

38' '06 Cruisers Yachts 385 Motor Yacht	\$174,900
33' '12 Chaparral 330 Signaure	Pending
23' '88 Chaparral 235XLC, 5.7L Merc	\$7,900

FISHING BOATS

27' '20 Robalo R272	SOLD
24' '13 Robalo R247 DC	SOLD
20' '13 Robalo R207	SOLD
20' '06 Sea Pro 206 Dual Console, '16 Mercury 150XL 4-stroke, trailer	SOLD
20' '96 Trophy 2002 WA	\$8,900



**AUTHORIZED
PARTS &
SERVICE**

MERCURY
MerCruiser



YAMAHA
When you want the best

**VOLVO
PENTA**



**Full Service
Marina w/Slings &
Racks Available!**

Large Indoor Showroom!

OPEN 7 DAYS A WEEK

 **FOUR WINNS**



 **KEY WEST**



Scout
BOATS



G3 **Boats**



 **YAMAHA** BUILT TO LAST



410.287.8280

www.AnchorBoat.com

448 MAULDIN AVE | NORTH EAST, MD 21901

ANCHOR
BOATS
North East, Maryland

Parts & Service
General Boat Repairs
High & Dry Boat Storage