

Free!



# The Salty Dog<sup>®</sup>



## CHESAPEAKE BAY EDITION

Published Every Other Week • Distributed in Maryland, Delaware, Southern Pennsylvania and Virginia

### POWERBOATS & SAILBOATS ...Including Marine Services



37' 1997 SEA RAY 370 SUNDANCER, 7.4L MPI Bluewater IB HR671, fully loaded boat has every option offered, autopilot, radar, sonar, Rutter position display, \$69,500, 856-332-4179, Jackie.zellner@gmail.com 151033



25' 2018 GRADY WHITE 257 FISHERMAN, READY TO SELL!!!! T/F150 Yamahas, low hrs, 7/23 warranty, factory options, Garmin GPS radar, Icom 504 radio, outriggers, fish inshore/offshore, family cruising, like new, END OF SEASON SALE! MAKE OFFER! \$119,000, 302-226-3734, Cell 302-218-9325 144975



32' 1988 BLACKFIN 32 SPORTFISH, Caterpillar 375hp diesels, 400 hours on rebuilds, Simrad chartplotter/radar, Furuno depth, \$39,000, 609-577-2555, johng2062@gmail.com 151133



29'1" 2009 WORLD CAT 29EC, Suzuki DF250s, (2) Raymarine E80 chartplotters, 4kw radar, M280 Xducer, SmartPilotX10, Garmin94sv, Taco 380s CF, 3 axle aluminum trailer incl, \$119,000, 609-892-6656, Heroshimaone@gmail.com 150765

**List Your Boat  
As Low As \$49!**

Go to [www.thesaltydog.com](http://www.thesaltydog.com)  
to get started!

Private Boat Ads Only



2011 MERCURISER 8.2 MAG HO ECT & BRAVO III X SEACORE, many new parts including risers approx 150 hours on well maintained engine, \$16,000, 267-315-3446, jkillino@killinofirm.com 151143



NEW 35' 2020 JEANNEAU NC 1095  
super loaded, ready for launch,  
Call for Details 302-945-2254  
anita@rudymarine.com



29' 1987 AQUASPORT TOURNAMENT MASTER, T/350hp MerCs, VHF, Raymarine radar/chartplotter, Garmin DF, Bluetooth stereo, new canvas top, brand new cushions, in great shape, turn key, new parts call for more details, \$18,500, 908-461-3372, frankguariglia@aol.com 150781



NEW 29' 2021 JEANNEAU NC 895 SPORT  
T/F250 Yamahas,  
Call for Details 302-945-2254  
anita@rudymarine.com

Annapolis, MD • St. Michaels, MD  
Deltaville, VA • Woodbridge, VA  
Delaware City, DE

**CONTACT US TODAY!**

info@curtisstokes.net  
410.919.4900

**CURTIS  
STOKES**  
& ASSOCIATES

[www.curtisstokes.net](http://www.curtisstokes.net)

**1-888-843-1585 • Private Boat Information on Page 18**





# WATERFRONT MARINE

#1 GOLL AVE, SOMERS POINT, NJ ~ 609-926-1700

281 PRINCETON AVE, BRICK, NJ ~ "Featuring Chaparral & Carver" 732-202-6961

2822 SOLOMON'S ISLAND RD, EDGEWATER, MD ~ 443-949-9041

Premium Brands ~ Exceptional Service

[WWW.WATERFRONTMARINE.COM](http://WWW.WATERFRONTMARINE.COM)



**Robalo R302**



**Robalo R230**



**Chaparral 297 SSX**



**Carver Yacht 34 Coupe**



**028**



**250 Suncoast**

## - PREOWNED BOATS -



**Located in Somers Point**

**24' '18 Chaparral 246 SSI,**  
6.2L Merc, Garmin, 63 hours, \$77,900



**Located in Somers Point**

**36' '11 Rinker 360 Cruiser,**  
Just Listed, \$124,900



**Located in Maryland**

**38' '06 Cruisers 385 Motor Yacht,**  
T/Volvo Dsls, 584 hours, \$147,900

### BOWRIDERS & PONTOONS

33' '17 Chaparral 337 SSX, T/Merc 6.2L Axis	SOLD	23' '07 Monterey 234	Pending
30' '17 Chaparral 307 SSX, T/300hp Volvo	SOLD	22' '14 Bennington 2275 GCW, Yamaha F150, 2018 Load Rite trailer	Pending
28' '14 Chaparral 284	SOLD	22' '19 Monterey M22	SOLD
28' '16 Chaparral 284 Sunesta	SOLD	22' '06 Sea Ray 220	Pending
28' '12 Chaparral 287 SSX, 8.2L	Pending	20' '11 Stingray 208 LR	Pending
28' '15 Chaparral 287 SSX, Volvo Penta 430hp DP, loaded	Pending	20' '07 Cobalt Bowrider	Pending
28' '04 Chaparral 280 SSI	SOLD	19' '01 Chaparral 196 SSI	SOLD
27' '14 Chaparral 277 SSX, Volvo Penta 380 DP	SOLD	19' '01 Chaparral 196 SSI	SOLD
26' '16 Four Winns H260	\$64,900	18' '11 Hurricane 188	SOLD
26' '09 Chaparral 264	SOLD	<b>CRUISERS &amp; CUDDY CABINS</b>	
26' '15 Monterey 264 FS	SOLD	38' '06 Cruisers Yachts 385 Motor Yacht	\$174,900
26' '05 Chaparral 260 SSI, Volvo Penta 8.1L 375hp	SOLD	36' '11 Rinker 360 Cruiser	\$124,900
26' '18 Chaparral 264 Sunesta	SOLD	33' '12 Chaparral 330 Signaure	Pending
25' '19 Bennington Q Series, 300hp Yamaha	SOLD	23' '88 Chaparral 235XLC, 5.7L Merc	\$7,900
25' '06 Cobalt 250	\$34,900	<b>FISHING BOATS</b>	
24' '17 Chaparral 246 SSI, Volvo Penta 300hp DP	SOLD	27' '20 Robalo R272	SOLD
24' '11 Chaparral 244 Sunesta	Pending	24' '13 Robalo R247 DC	SOLD
24' '19 Chaparral 244 Sunesta	Pending	20' '13 Robalo R207	SOLD
24' '18 Chaparral 246 SSI	SOLD	20' '06 Sea Pro 206 Dual Console, '16 Mercury 150XL 4-stroke, trailer	SOLD
24' '18 Chaparral 2430 VRX	\$68,900	20' '96 Trophy 2002 WA	\$8,900
24' '15 Chaparral 243 Vortex	\$49,900	<b>PERFORMANCE BOATS</b>	
23' '00 Chaparral 235 SSI Cuddy, Merc 5.7L EFI	\$12,990	35' '02 Sonic 358	\$44,900
23' '16 Manitou Oasis	Pending		



**AUTHORIZED  
PARTS &  
SERVICE**

**MERCURY**  
MerCruiser



**YAMAHA**  
When you want the best

**VOLVO  
PENTA**



**Full Service  
Marina w/Slings &  
Racks Available!**



**Rt. 113 Boat Sales  
and  
Service**

Selbyville, DE 302-436-1737  
www.Rt113BoatSales.net

**TAX  
FREE**

**COBIA**  
20 to 35 Feet

**302-436-1737**

**QUALITY IS  
MORE AFFORDABLE  
THAN YOU  
THINK!**



**PATHFINDER**  
ANGLER DRIVEN

**In Stock! 2005 - 2200 - 2600**

**NOBODY Beats My Deals!**



**f** **YouTube**

**Repower**  
**150hp  
to  
425hp**



 <p><b>Cobia 201 CC - \$44,713*</b> F150 Yamaha</p>	 <p><b>Cobia 220 CC - \$53,982*</b> Twin F200 Yamaha</p>	 <p><b>Cobia 237CC - \$69,990*</b> Twin F150 Yamaha's</p>
 <p><b>Cobia 301 CC - IN STOCK!</b> Twin F300 Yamaha's - Digital</p>	 <p><b>Cobia 320CC - INSTOCK!</b> Twin F350 Yamaha's - Digital</p>	 <p><b>Cobia 350 CC - IN STOCK!</b> Triple F300 Yamaha's - Digital GARMIN Command</p>

**BOAT TRAILERS  
at  
Wholesale  
Pricing!**

**GARMIN**  
AUTHORIZED RESSELLER  
Certified Installer

**YAMAHA**

**MASTER YAMAHA TECHNICIAN  
ON STAFF**  
Repower with Yamaha's Unmatched  
Reliability...TAX FREE!

\* See store for Options included and details on Pricing



# 4<sup>TH</sup> OF JULY SALE CONTINUED!

## Boats in Stock & Ready To Go



## BLACKFIN

## SEAFOX



Delaware has  
**NO SALES TAX!**  
**3 GREAT LOCATIONS!**

**302-945-2254 • 32606 DuPont Blvd Dagsboro, DE 19969**  
**302-999-8735 • 411 S. Maryland Ave. (Rt 4) Wilmington, DE 19804**  
**443-995-3785 • 3033 Kent Narrows Way South, Suite 3 Grasonville, MD 21638**



# 4<sup>TH</sup> OF JULY SALE CONTINUED!

## Huge Selection of Pontoons!



2020  
**Misty Harbor  
A-1885 CF,**  
F-70  
Yamaha



2020  
**Misty Harbor  
A-2085 CF,**  
F-115  
Yamaha



**2020 Misty  
Harbor  
A-2285 CF,**  
F-115  
Yamaha



**2020 Misty  
Harbor  
A-2085 RU,**  
F-115  
Yamaha



**2020 Misty Harbor A-2285 CR**  
F-115 Yamaha



**2020 Misty Harbor B-2285 CU**  
Triple-tube, F-200 Yamaha



**2020 Misty Harbor B-2285 CEC**  
Bar boat, Triple-tube,  
F-250 Yamaha

**Rudy Marine.com**  
*Where Family Boating Begins*

Delaware has  
**NO SALES TAX!**  
**3 GREAT LOCATIONS!**

**YAMAHA**  
**REPOWER HEADQUARTERS**

**302-945-2254 • 32606 DuPont Blvd Dagsboro, DE 19969**  
**302-999-8735 • 411 S. Maryland Ave. (Rt 4) Wilmington, DE 19804**  
**443-995-3785 • 3033 Kent Narrows Way South, Suite 3 Grasonville, MD 21638**



# Upper Chesapeake Yacht Sales

**John Curry • (610) 299-3598**  
**www.upperchesapeakeyachtsales.com**



**42' 2016  
Regal Sport  
Coupe  
\$397,900**



**Fully loaded high end Regal with just 70 hours on Volvo 400hp Diesel motors and IPS drives. Boat was delivered new in April of 2018 which is start of warrantee period. Buy now and be ready for Spring!  
 We own this boat and trades are considered!**



**53' '78 Hatteras Classic MY,**  
8V71TI DD, bow thruster,  
new elects, **\$149,900**



**42' '16 Regal 42SC,**  
T/Volvo Dsls with IPS, mint,  
loaded, **\$397,900**



**40' '93 Sea Ray 400 Express,**  
T/454 V-Drives, gen, AC,  
**\$38,500**



**39' '89 Sea Ray 390 Express,**  
T/330hp, gen major upgrades,  
mint, **\$39,900**



**37' '88 Hunter Legend Sloop,**  
great electronics, nice,  
**\$39,900**



**36' '78/'07 Jarvis Newman  
FB Cruiser,** 330hp Cummins,  
gen, AC, mint, **\$139,900**



**31' '69 Chris Craft Commander,**  
hardtop, 10 hours on  
270hp Crusaders, AC,  
restored classic, **\$19,900**



**30' '84 Catalina Sloop,**  
diesel, great starter boat,  
**\$11,500**



**28' '78 Cape Dory Sloop,**  
diesel, great starter boat,  
**\$13,500**



**24' '80 Lyman Sportsman,**  
220hp IB, restored classic, mint,  
trailer included, **\$14,900**

<b>24' '15 Sea Chaser HFS,</b> 300hp Suzuki, alum trl, loaded w/elects, mint..... <b>\$54,900</b>	<b>39' '89 Sea Ray 390 Express,</b> T/7.4L, gen, BEST OUT THERE..... <b>\$39,900</b>
<b>28' '04 Sea Ray 280 Sundancer,</b> T/4.3L, gen, AC, mint..... <b>Pending</b>	<b>41' '00 Sea Ray Sundancer,</b> T/380 Merc V-Drives, AC, very nice ..... <b>\$92,500</b>
<b>31' '13 Bertram Custom SF,</b> like new, \$200K below replacement..... <b>\$395,000</b>	<b>43' '81 Viking FBMY,</b> rebuilt DD 6-71, new genset, new canvas, Davit ..... <b>\$59,900</b>
<b>35' '88 Beneteau Oceanis Sloop,</b> Volvo Dsl, AC, elec fridge, nice..... <b>Pending</b>	<b>43' '78 Gulfstar Trawler,</b> Twin Perkins, new genset, newer elects..... <b>\$39,900</b>
<b>35' '76 Ericson Sloop,</b> Volvo Diesel, upgrades in process ..... <b>\$14,900</b>	



**Expect The Same  
Superior Service From Our  
Brokerage That You Get  
From Our Marina**

**BOAT SALES & BROKERAGE**  
 • *Financing & Insurance Available* •

**WORTON CREEK MARINA**

23145 Buck Neck Road • Chestertown, MD 21620

**(410) 778-3282**



# ALMARS

**We Are A Full Service, Premier Mercury Outboard Repair Center! Let Our Certified Mercury Technicians Service Your Mercury Motor Needs!**

## LEFTOVER VERADO SALE!

**YES!!!!  
WE ARE OPEN  
FOR BUSINESS  
8AM-5PM  
MONDAY-FRIDAY!**



225hp  
black • \$14,995



250hp  
black • \$15,995



300hp  
black • SOLD



300hp  
white • \$18,995



350hp  
Call for Great Deal!



350hp  
Call for Great Deal!

**We Now  
Offer  
INJECTOR  
SERVICE  
with  
ONE Day  
Turnaround!**



150  
4-stroke  
Black



150 ProXS  
4-stroke  
Black



175XL ProXS  
4-stroke  
Black



200  
Sea Pro  
Black



225XL  
4-stroke  
Black



250 XL  
4-stroke  
White

**100's of Used  
Cowllings In Stock!  
Call for Availability!**

**2018 250hp  
XXL Opti  
\$15,995**

**250XL PRO  
VERADO 15,995  
Only 1 Available**

### REMANUFACTURED OUTBOARD ENGINE SALE!

90hp - 250hp 2 Year Warranty  
**Starting As Low As \$5,495 Call for Details!**

**CALL US  
FOR GREAT  
DEALS ON  
NON-CURRENT  
POWERHEADS!**

**Call us for current pricing new current  
and noncurrent outboards  
NO SALES TAX IN DELAWARE!**

701 Washington St., New Castle, DE

**302-328-8541  
www.almarsoutboards.net**

All prices good  
while supplies last!

**HOURS: Monday - Friday: 8am - 5pm  
CALL FOR GREAT PRICING ON NEW  
& USED MERCURY OUTBOARDS**

**NO HIDDEN COSTS  
NOT RESPONSIBLE FOR TYPOGRAPHICAL ERRORS**



Pricing includes all rebates.





**Worldwide Yacht Sales | Yacht Charters | New Yacht Construction**



2004 48' Sea Ray - \$325,000  
Ed Pickering - 410.708.0633



1985 42' Grand Banks - \$155,000  
Wayne Smith - 516.445.1932



1980 37' Young Sun - \$34,500  
David Robinson - 410.310.8855



1978 36' Trojan - \$32,800  
Jason Hinsch - 410.507.1259



1987 36' Marine Trader - \$62,500  
Mary Catherine Ciszewski - 804.815.8238



1998 35' Carver - \$74,500  
David Robinson - 410.310.8855



2012 34' Nordic Tug - \$244,500  
Mary Catherine Ciszewski - 804.815.8238



1995 33' Sea Ray - \$29,000  
David Robinson - 410.310.8855



1998 33' Sea Ray - \$51,000  
Ed Pickering - 410.708.0633



1980 33' Bertram - \$57,000  
David Robinson - 410.310.8855



1995 29' C-Hawk - \$42,500  
Jason Hinsch - 410.507.1259



2013 27' Cherubini - \$237,000  
Jack Kelly - 609.517.2822

To see more details about these and all other yachts around the globe, please visit our website below.

Annapolis, MD • St. Michaels, MD • Delaware City, DE • Deltaville, VA • Woodbridge, VA  
Telephone: 410.919.4900 • Email: [info@curtisstokes.net](mailto:info@curtisstokes.net)

**[www.curtisstokes.net](http://www.curtisstokes.net)**



# Sassafras Harbor Marina Yacht Sales



**888-221-5022**

1 George Street, P.O. Box 68  
Georgetown, MD

[sassafrasharbormarina.com](http://sassafrasharbormarina.com)



**56' Carver 564 Cockpit MY '02**  
T-Volvo Diesel, T&H Floors  
**\$268,000**



**41' Hatteras Convertible '67**  
T-Detroit Diesel, Fish/Cruise  
**\$69,000**



**39' Silverton 392 MY '99**  
Roomy interior, nice condition!  
**\$89,900**



**37' Sea Ray 370 Sedan '95**  
T-Merc. 7.4, Well maintained  
**\$49,500**



**36' Carver 3608 '90**  
T-Merc. Nice condition  
**\$43,900 Sold**



**35' Chris-Craft Catalina '84**  
T-Crusader new in 2012  
**\$25,000**



**35' Sea Ray 350 Sundancer '91**  
T-Merc. Clean, well maintained  
**\$29,700 Sale pending**



**31' Larson Cabrio 310 '08**  
T-Volvo Penta, Exc. Cond.  
**\$67,900**



**31' Silverton 312 Sedan '98**  
T-Crusader, new flooring  
**\$31,900**



**26' Sea Ray 260 Overnighter '99**  
Merc 7.4, Camper canvas  
**\$22,900 w/trailer, new tires**



**23' Crownline 236SC '16**  
Merc. 6.2 B-III Exc. Cond.  
**\$56,000**



**22' Sea Ray 225 '06**  
Merc. 5.0 w/new Bravo III in '18  
**\$23,500 w/yard trailer**

42' Chris Craft 426 '86.....\$49,900

35' Carver 350 Mariner '03.....Sale pending

20' Sea Master 208FF '98 w/trl...Sale pending

38' Carver Santiago '94.....\$39,500

26' Sea Ray 260 Sundancer '06.....Sold

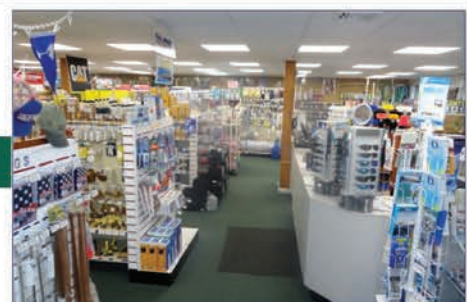
13' Boston Whaler '16 w/trl.....Sale pending



## Sassafras Harbor Marine Store

**OPEN 7 DAYS A WEEK!**

*The Heron's Nest  
Gift Shop*



**Marina: 410-275-1144 ~ Floating Dock Slips Available ~ Store: 410-275-2666**



# ANNAPOLIS CRUISAIR, INC.

Family Owned & Operated for Over 50 Years

**SALES • SERVICE • INSTALLATION**



**U-LINE**  
U-Line Ice makers  
110/115vAC

We will meet or beat  
any competitive  
price quote for  
these products!



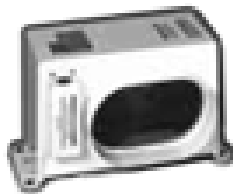
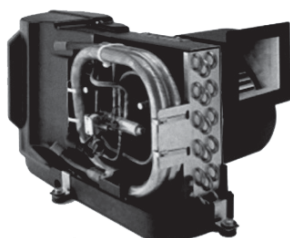
Marine Diesel  
Heaters



**Espar**

**Cruisair®**

New Turbo  
Air Conditioners • Heat Pumps



• We Have • BREATHE EASY AIR FILTERS

**Sentry™**  
*Cruisair*

BATTERY  
CHARGERS



SAFEST  
CHARGER  
ON THE  
MARKET!

**Eskimo Ice  
600 Ice Pump**

Provides up to 600 lbs. of fresh  
ice in a day from your ships  
water tank.



**STINKY BOAT?**

We Have **NEW**  
Breathe Easy  
Air Purifiers



DOMETIC

**SPOTZERO®**  
Fresh Water Reverse Osmosis

**Water Purification Systems**



**Vitrifrigo**  
REFRIGERATORS

**WAECO**  
**Adler/Barbour®**



MARINE AIR SYSTEMS®

**AIRRRRRRRRR**  
by Dometic GROUP



**KOHLER.**

- Generators -

**Onan**



**Fischer Panda**

2124 Renard Ct. • Annapolis, MD

(410) 224-0970 • (410) 974-6136 • Fax (410) 224-0050

[www.annapoliscruisair.com](http://www.annapoliscruisair.com)



New Dealer for:  
**SEA PRO**  
the next wave



208 Bay

**CAROLINA SKIFF**



23 Ultra

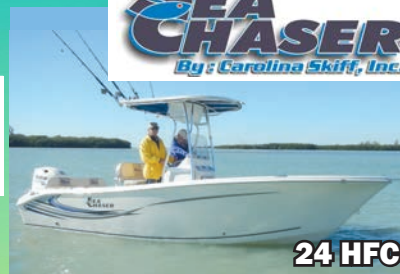
**ALUMA** Craft



Powered by:

**SUZUKI**  
MARINE

**SEA CHASER**  
By: Carolina Skiff, Inc.



24 HFC

**DANNY'S MARINE**

**(410) 228-0234 • www.dannysmarine.com**

Located on US Rt 50 (mile marker 86) • Chateau Drive near Linkwood, MD

**dannysmarine@comcast.net**

Limited Time Offers. Not all models qualify. See Participating Suzuki Marine dealer for details or visit [www.suzukimarine.com](http://www.suzukimarine.com)

©2018 Suzuki Motor of America, Inc.

**LINK'S OUTBOARD**

**Certified Outboard Remanufacturing Center**

**Save \$Thousands\$ Over**

All Rebuilds Come  
With Up To A  
3 Year Warranty

**Buying New**

"The  
East Coast Leader  
in OB's"

WE OFFER A FULL SERVICE REPAIR FACILITY SPECIALIZING IN:

**MERCURY • JOHNSON  
EVINRUDE • YAMAHA**

25 YEARS OF OUTBOARD EXPERIENCE

NO SALES TAX IN DELAWARE

**4 ALBE DRIVE, NEWARK, DELAWARE - 302-368-2860**  
**www.linksoutboard.com**





***Full Service Marina • Slips Available  
Call Now for Spring Services!***

**609-927-1175 • [www.CJamYachts.com](http://www.CJamYachts.com)**

**680 Bay Ave • Somers Point, NJ**

***PRE-OWNED SPECIAL!***



**2018 Tiara 39 Open, T/Cummins Dsls, loaded,  
full elects, like new, \$680,000**



**3059 Ocean Heights Ave  
Egg Harbor Twp, NJ 08234**

**Call 609-365-8746**

**Sales • Installation • Service**

***Here for All  
Your Electronic  
Needs!***





732-691-1216 www.DRBMarineLLC.com



**MARINE MAT**  
Marine Decking Solutions

Boat Dealers &amp; Brokers...

**YOUR AD**  
**could be HERE**

...Reaching out to well over 30,000  
interested home owners and prospects!

We're the original  
FREE Boating Publication....  
and readers find a new copy on the  
stands...every other week.

For more information,  
call the leader in targeted  
boat advertising

**Toll Free 1-888-843-1585**

# CLARKS FLOATS

## PIER & PILE

**443-871-0436 • CLARKSFLOATS@GMAIL.COM**

CLARKS FLOATS  
PIER & PILE

- Floating Docks
- Pile Driving
- Re-Decking

**MMCLB #390 I**



**8x16 KAYAK DOCK**



**8x12 KAYAK ACCESS**



Kayak Floats  
**Dock Sections • Work Rafts**  
**Swim Platforms • Gang Planks**  
**SS Fasteners • #1 P.T. Lumber**  
Perma Float Floats  
Composite Decking

**Deale, MD**



CALL NOW  
410-686-6998



**WEST SHORE**  
YACHT CENTER  
ESSEX, MARYLAND

TROPICAL  
POOL

BEST LIFT  
SLIPS ON  
THE BAY

**GET YOUR LIFT AT**  
**WEST SHORE YACHT CENTER**

LIFT SLIPS AVAILABLE FOR BOATS UP TO 20,000LBS  
3 MILES TO THE BAY WITH **NO SPEED LIMIT!**

CLIMATE  
CONTROLLED  
BATHROOMS  
AND SHOWERS






**Call Today to Reserve Your Slip • 410-686-6998**  
**1100 E. Riverside Ave, Essex, MD 21221**

# VENTURE

## TRAILER SALE

**Buy At Our Cost**  
**Over 25 Trailers**  
**In Stock**

MUST  
GO!

We are overstocked with new trailers  
sizes from 22' to 26'

All aluminum with galvanized wheels!



**GRANDE YACHTS**  
INTERNATIONAL

Grasonville, MD

410-286-1350

# Goldsborough's Marine

709 W. Main St., Crisfield, Maryland  
Ph.# 410-968-0852 • Email: merc71@verizon.net


"Where Happiness Is Just A Boat Ride Away!"



**Roughneck**  
by LOWE

**4<sup>th</sup> of July Sale Extended!**

2.5 MH .....	\$999
4 MH .....	\$1,410
9.9 MH .....	\$2,475
9.9 MLH .....	\$2,495
15 MH .....	\$2,845
20 MH .....	\$3,090
20 MLH .....	\$3,095
25 MLH .....	\$3,160



## YAMAHA



**Outboard Sale**  
**Starting at \$999**



\$18,990

**2019 C-Hawk 16FT CC**  
Yamaha 50 ELPT HT 4-stroke  
EZ Loader galv trailer

**The Best Ships Store on Delmarva • Open All Year • [www.crisfield.com/gold](http://www.crisfield.com/gold)**

**Maryland's Oldest C-Hawk Dealership • Maryland's Largest Lowe Boat Dealer**



*Escape  
Unplug  
Unwind*

# ATLANTIC CITY IN-WATER POWER BOAT SHOW®

September 10-13, 2020

GOLDEN NUGGET CASINO HOTEL | FARLEY STATE MARINA

**\$12 tickets in advance**  
FREE SELF PARKING



[www.acinwaterboatshow.com](http://www.acinwaterboatshow.com)



## ADVERTISERS INDEX

AC IN WATER BOAT SHOW.....	15	EGG HARBOR ROPES.....	22
ALMARS.....	7	GEICO.....	12
ANCHOR BOATS.....	24	GOLDSBOROUGH'S MARINE.....	13
ANNAPOLIS CRUISAIR.....	10	GOOD AUTOMATIC WINDLASS.....	22
BOAT DOCTOR.....	22	GRANDE YACHTS.....	14
BOAT LIFTS UNLIMITED.....	16	LINKS MARINE.....	14
CJAM YACHT SALES.....	12	LIST YOUR BOAT.....	18
CLARKS FLOATS.....	13	RT113 BOAT SALES.....	3
CLARKS LANDING.....	23	RUDY MARINE.....	4-5
CURTIS STOKES.....	8, 17	SASSAFRAS HARBOR MARINA YACHT SALES..	9
CUSTOM REBUILT CARBURETORS.....	22	UPPER CHESAPEAKE YACHT SALES.....	6
DANNY'S MARINE.....	11	WATERFRONT.....	2
DRB MARINE.....	11	WEST SHORE YACHT CENTER.....	14

## THE LARGEST LOW PROFILE BOAT LIFT MANUFACTURER IN THE USA

**CALL  
US FOR  
YOUR LOCAL  
DEALER!**



### Choose The Right Boat Lift, Choose

- Low Profile Design • Low Maintenance • 2/5 Yr Warr.
- Outside Walkway • Galvanized Steel Construction
- Aluminum Cradles Available • Capacity 800-40,000 lbs. [www.magnumlift.com](http://www.magnumlift.com)

**MAGNUM**  
**BOAT LIFTS**  
Personal Watercraft Lifts

Fully  
Insured

**BOAT LIFTS UNLIMITED**  
**410-674-3100 • 1-800-268-5911**

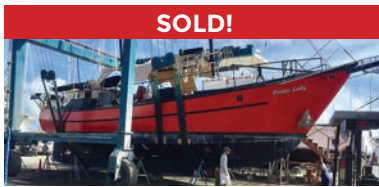
**WE SERVICE  
MOST MAKES  
OF BOAT  
LIFTS!**

Located in Odenton, MD, this full-service boat lift manufacturer has a network of over 180 distributors serving the Chesapeake Bay, Great Lakes and Atlantic Coast with Magnum Boat Lifting Products. Boat Lifts Unlimited is dedicated to customer satisfaction through prompt, courteous service on most existing boat lifts and timely installation of new boat lifts. Quality materials, attention to detail and innovative design have made Boat Lifts Unlimited one of the largest boat lift manufacturers in the U.S.





Worldwide Yacht Sales | Yacht Charters | New Yacht Construction



**SOLD!**

72' Trade Rover



**SOLD!**

50' Chris-Craft



**SOLD!**

48' Evans Boats



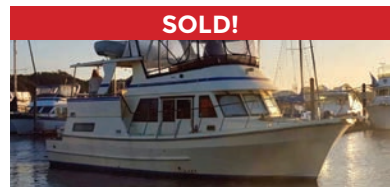
**SOLD!**

44' DeFever



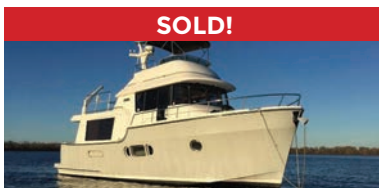
**SOLD!**

44' Gulfstar



**SOLD!**

42' Fu Hwa



**SOLD!**

40' Fathom



**SOLD!**

40' Hinckley



**SOLD!**

36' C&C



**SOLD!**

36' Bristol



**SOLD!**

32' Eagle



**SOLD!**

26' Sisu

**List your boat with us and join our **SOLD** list!**

To see more details about these and all other yachts around the globe, please visit our website below.

Annapolis, MD • St. Michaels, MD • Delaware City, DE • Deltaville, VA • Woodbridge, VA  
Telephone: 410.919.4900 • Email: [info@curtisstokes.net](mailto:info@curtisstokes.net)

**[www.curtisstokes.net](http://www.curtisstokes.net)**

# FREE LISTING WITH PHOTO ON THE INTERNET

## PRIVATE AD RATES

- ☐ 3 ISSUES NO PHOTO CLASSIFIED..... \$39<sup>00</sup>
- ☐ 3 ISSUES WITH COLOR PHOTO  
WITH COLOR PHOTO ON INTERNET..... \$59<sup>00</sup>
- ☐ INTERNET FEATURE ADD ON 4 WEEKS  
**AVAILABLE WITH AD PURCHASE ONLY!**  
ON THE SALTY DOG HOME PAGE..... \$49<sup>00</sup>
- ☐ FRONT COVER..... \$40<sup>00</sup>
- ☐ PUBLICATION MAILED TO YOU..... \$2<sup>00</sup>

## TOTAL

FRONT COVERS ARE BASED ON AVAILABILITY

- ☐ CHECK ☐ MONEY ORDER ☐ DISCOVER  
☐ MASTERCARD ☐ VISA ☐ AMERICAN EXPRESS

CC#

Expiration Date \_\_\_\_\_ Security Code \_\_\_\_\_

Signature \_\_\_\_\_

Advertiser's Name .....

Address .....

Phone .....

Where did you pickup "The Salty Dog"?

Store \_\_\_\_\_ Town \_\_\_\_\_

Fill out the description form below, **up to 125 characters (including spaces & punctuation) of advertising**. Please put one character per space beginning with the motor. Include a check, money order or credit card, and mail to us with a good quality COLOR photograph of your boat. Photos will only be returned if accompanied by a self-addressed stamped envelope.

## AD COPY

FT. \_\_\_\_\_ YR. \_\_\_\_\_

MANUF. / MODEL \_\_\_\_\_

MOTOR \_\_\_\_\_

ACCESSORIES \_\_\_\_\_

LOCATION OF BOAT \_\_\_\_\_ City \_\_\_\_\_ State \_\_\_\_\_ Zip Code \_\_\_\_\_

PRICE \_\_\_\_\_

PHONE # \_\_\_\_\_

EMAIL \_\_\_\_\_

**Send to: The Salty Dog  
254 Brick Blvd • Suite 1  
Brick, NJ 08723**

**888-843-1585**

Fax (732) 477-9000 • Email: [info@thesaltydog.com](mailto:info@thesaltydog.com)

No refunds after Ad is processed. • Advertiser will be responsible for \$20 fee on returned checks.

**YOUR BOAT LISTING CAN ALSO BE SUBMITTED ON THE INTERNET [www.thesaltydog.com](http://www.thesaltydog.com)**

## SPECIAL FEATURES

PRIVATE BOAT ADS ..... Pgs. 19-21

SAILBOATS ..... Pg. 21

## SUBSCRIPTION CHESAPEAKE BAY

SALTY DOG is published Bi-weekly 25 times a year.

Papers are mailed **FIRST CLASS**. Your first issue will be mailed within 1 week.

To subscribe, just fill in the amount of issues and multiply by \$2.00\*

No. of issues \_\_\_\_\_ x \$2.00\* = Total Cost \_\_\_\_\_

☐ CHECK ☐ MONEY ORDER ☐ MASTERCARD ☐ VISA

Credit Card No. \_\_\_\_\_

Exp. Date \_\_\_\_\_

Signature \_\_\_\_\_

Name \_\_\_\_\_

Address \_\_\_\_\_

City \_\_\_\_\_ State \_\_\_\_\_ Zip \_\_\_\_\_

Telephone \_\_\_\_\_

\*Canada Subscription Add 10% - Bermuda Subscription Add 30%  
Outside the Continental USA Add 50% • Credit Cards Only Outside USA



Mail To: THE SALTY DOG, 254 Brick Blvd • Suite 1, Brick, NJ 08723



A Bi-weekly Publication for  
Powerboats, Sailboats, Marine  
Equipment, Supplies, Services,  
Waterfront and Photo Ads

For More Info on Display Ads or Internet Listings

Call 888-843-1585 • Fax (732) 477-9000

[info@thesaltydog.com](mailto:info@thesaltydog.com) • Mon.- Fri. 9:00 am to 4:00 pm



**See Color Photo on the Internet**

**44' 1998 Other Insley deadrise**, 450 Cummins, 1 of 8 built. Upgraded electronics/radar, wash down, center berth head, 450 Cummins diamond series just recently fully serv, \$66,500, 410-829-1715 Fox071002@gmail.com 151062

**See Color Photo on the Internet**

**38' 2006 FORMULA 382 FASTEC**, T/Merc 525 EFIs, ITS extension boxes, custom graphics, custom trailer, \$131,995, 732-840-1100 sales@brennanboat.com 148280

**See Color Photo on the Internet**

**31' 1966 BERTRAM SPORT CRUISER**, 454 FWC Crusaders, tuna tower, quality electronics, many extras, owner retiring after 41 years, \$18,000, 302-645-2431, Cell 717-872-5406, vjkeagy@verizon.net 149558

**42' 1975 GRAND BANKS ALL FIBERGLASS CLASSIC**, (2) 135hp John Deere, 8kw Westerbeke diesel gen, all fiberglass, radar, depth recorder, stereo, new bimini top, on land, bottom painted  
**\$65,000 • 443-534-9249**  
**annapolis\_outboard@yahoo.com**

**See Color Photo on the Internet**

**34' 2011 PURSUIT 345 OS**, Twin 250hp Yamahas, radar, autopilot, gen, AC/HT, ready to fish, \$239,995, 732-840-1100 sales@brennanboat.com 149753

**See Color Photo on the Internet**

**30' 1973 PACEMAKER Sport fish**, 2-310hp FWC, 750 hrs, runs good, \$8,000, 443-602-0003 Bunnyboat@verizon.net 150829

**See Color Photo on the Internet**

**42' 2019 BUDDY DAVIS 42 CC**, Triple 425hp Yamaha Seakeeper, loaded, ready to fish, Call for Leftover Price, 609-368-1141 stoneharboryachts@gmail.com 150995

**See Color Photo on the Internet**

**32' 1986 SABRE 32 CRUISER/RACER**, Westerbeke 21hp diesel, 3 separate cabins, sleeps 8, Navy Blue hull, \$26,000, 732-899-8010 sales@schraderyachts.com 148276

**See Color Photo on the Internet**

**29' 2009 WORLD CAT 29EC**, SUZUKI DF 250, 2 Raymarine E80 Chartplotters, 4kw Radar, M280Xducer, SmartPilotX10, Garmin94sv, Taco 380's CF, 3 Axle Aluminum Trailer Included, \$119,000, 609-892-6656 Heroshimaone@gmail.com 150765

**See Color Photo on the Internet**

**39' 2018 TIARA 39 OPEN**, T/Cummins DsIs, loaded, full electronics, like new, \$680,000, 609-927-1175 amury@cjamyachtsales.com 150797

**See Color Photo on the Internet**

**31' 2012 SEA RAY 310 SUNDANCER**, T/5.0L Mercs, 345 hours, gen, loaded, \$114,900, 732-267-2283 info@hoffmansmarina.com 149755

**See Color Photo on the Internet**

**28' 2018 Tidewater CENTER CONSOLE**, T/250hp Yamahas, still under warranty, \$129,000, Call or Text 908-489-5098 151041

**See Color Photo on the Internet**

**39' 1999 CARVER BOATS 356**, Dual 454 fuel injected, GPS, fridge, gen, AC, kept on boat lift, \$70,000, 301-752-0397 150621

**See Color Photo on the Internet**

**31' 2007 REGAL 3060 Windows Express**, Volvo Penta 5.0, Looks new. 1 owner, low hrs. stored inside, many extras. \$62,000, 717-515-0168 watercruiser@comcast.net 150217

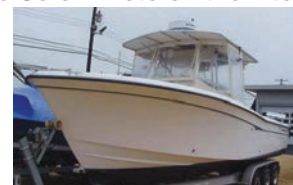
**See Color Photo on the Internet**

**28' 1995 MAKO CENTER CONSOLE**, complete restoration, over \$100k invested, only 150 hours on repower, \$84,900, Call or Text 908-489-5098 151123

**39' 1964 OWENS Cabin Cruiser**, Chrysler, boat kept under shed it's entire life, good condition. engines need work but would be a great liveaboard  
**\$3,000**  
**804-529-6851**  
**krentz2@verizon.net**

**See Color Photo on the Internet**

**31' 1980 BERTRAM FLYBRIDGE**, T/6-cyl Cummin DsIs, custom windows, reasonable offers accepted, **JUST REDUCED! \$55,000 OBO**, 908-309-4016 almarina1@gmail.com 148434

**See Color Photo on the Internet**

**28' 2003 GRADY-WHITE 283 RELEASE**, Dual Yamaha F225hp OBs, Vantage T/A galv trailer, approx 1100 hrs, radar, GPS, echo finder, CP/FF, VHF, t-top, \$59,900, 732-929-1711 Tom@hobbylobbymarine.com 147078



**See Color Photo on the Internet**



**28' 2002 TRITON 2895 CC**, Yamaha 4-stroke, \$39,500, Call or Text 908-489-5098 151040

**See Color Photo on the Internet**



**26' 1992 FORMULA 26PC**, trailer - 850 hours (1) 454 cu Mercruiser - new lower B3 unit OEM, new gimbal housing assembly OEM, manifolds and risers, entire Coosa transom, hv oil pump & pan. See internet ad for complete details, \$25,000, 302-249-9745 paddwheel@comcast.net 150891

**See Color Photo on the Internet**



**24' 1998 SHAMROCK 246 CC**, 350 Chevy, low hours, runs great, trailer, new Furuno GP1971F FF/1kw transducer, outriggers, \$16,900, 732-865-5170 kneri7106@gmail.com 150896

**See Color Photo on the Internet**



**28' 2009 SEA RAY Sundeck 280**, MerCruiser 350 MAG w/Bravo III, 172 hours, trailer is included, lots of extras, water ready boat \$26,500 337-900-8913 jmcille100@gmail.com 150782

**See Color Photo on the Internet**



**26' 1983 SHAMROCK PILOTHOUSE**, repowered in 2016, Yamaha 230hp Dsl, 700 hrs, ORs, dual anchors, SWWD, navigation lights, \$16,900, Call or Text 908-489-5098 147989

**See Color Photo on the Internet**



**23' 2016 PARKER 2300 SPECIAL EDITION**, 200hp Yamaha 4-stroke, electronics, trailer, \$45,500, 732-899-8010 sales@schraderyachts.com 150895

**See Color Photo on the Internet**



**25' 2017 Parker Boat 2520 XLD**, Twin F200 XCA, 25 hours, bow thruster, power steering, 2nd steer station, auto tabs, top of line Raymarine electronics \$120,000 610-248-5089 mpasquarelli@msn.com 148053

**See Color Photo on the Internet**



**23' 2002 TROPHY 2352 WA**, 5.7L Merc I/O, marine head, baitwell, 2004 Tidewater tandem trailer, \$14,900, 908-309-4016 almarine1@gmail.com 150630

**See Color Photo on the Internet**



**27' 2016 WORLD CAT 2780 GLACIER BAY EDITION**, hardtop, T/150hp Yamaha 4-stroke, full electronics, \$149,900, 732-899-8010 sales@schraderyachts.com 150894

**See Color Photo on the Internet**



**25' 2018 GRADY-WHITE 257 FISHERMAN**, REDUCED TO SELL!!!! T/F150 Yamahas, low hrs, 7/23 warranty, factory options, Garmin GPS radar, Icom 504 radio, outriggers, fish inshore/offshore, family cruising, water skiing, like new, **END OF SEASON SPECIAL! BRING OFFER! \$119,000** Call 302-226-3734 or 302-218-9325 144975

**See Color Photo on the Internet**



**23' 1994 RINKER 236 Captiva Cuddy Fun and Fast**, 1997 Mercruiser 454 MAG MPI (385hp) and 2010 Karavan dual axle bunk trailer, \$10,500, 202-255-6474 rcbv227@gmail.com 150887

**See Color Photo on the Internet**



**27' 1998 GRADY-WHITE 272 SAILFISH**, Dual 1998 Mercury 225hp Optimax OBs, hardtop w/encl, electric head, battery charger, livewell, salt water washdown, GPS/map/sounder, stereo, windlass, \$29,900, 732-929-1711 Tom@hobbylobbymarine.com 146726

**See Color Photo on the Internet**



**22' 2004 COBALT 226 BOWRIDER**, 300hp Mercruiser 350 Mag, BIII, only 168 hours, bimini, excellent condition, \$25,000, 732-899-8010 sales@schraderyachts.com 150893

**See Color Photo on the Internet**



**26' 2003 HYDRA-SPORTS 2600 VECTOR**, excellent condition, ready to sell, \$34,950 OBO, Call or Text 908-489-5098 seaportpics@gmail.com 151127

**22' 2015 SWEETWATER PONTOON**, 115hp Yamaha, less than 100 hours, bimini, full cover and seat covers, GPS \$22,500 410-778-2228



**See Color Photo on the Internet**



**22' 1992 SHAMROCK CENTER CONSOLE**, runs great, gas engine, \$9,500, Call or Text 908-489-5098 151035

**See Color Photo on the Internet**



**20' 1995 May-Craft**, new Yamaha, \$14,950, Call or Text 908-489-5098 151124

**See Color Photo on the Internet**



**38' 1989 ISLAND PACKET**  
Yanmar 44hp diesel, 338 hours, one owner boat, lightly used,  
**\$112,500**  
**732-899-8010**  
**sales@schraderyachts.com**  
144832

**See Color Photo on the Internet**



**21' 2018 SPORTSMAN 212 OPEN**, w/Offshore package, upgraded 200hp Yamaha, trailer, hardtop, GPS/plotter, FF, only 27.5 hrs, extended warranties!, \$59,995, 732-840-1100 sales@brennanboat.com 150795

**See Color Photo on the Internet**



**20' 2007 MALIBU Wakesetter VTX**, Indmar Monsoon, trailer included,  
**\$12,000**  
**678-753-8906**  
**hbh250250@gmail.com**  
150632

**See Color Photo on the Internet**



**36' 1968 TRI-MAR Trimaran**, 3 cylinder Volvo, all teak wood, galley, head, sleeps 8-10, all sails, cushions, anchor, plenty of storage, drafts 3', 2 steering wheels, very comfortable sailing  
**\$16,000**  
**609-694-1731**  
**lakefrontview@exede.net**  
140938

**See Color Photo on the Internet**



**21' 2019 KENCRAFT CC CHALLENGER OUTER BANKS**, Yamaha F-200 XB 4-stroke, \$55,000, 732-929-1711 Tom@hobbylobbymarine.com 140921

**See Color Photo on the Internet**



**20' 2000 KEY LARGO CENTER CONSOLE**, boat, motor & trailer, \$7,500, Call or Text 908-489-5098 151038

**See Color Photo on the Internet**



**21' 2017 BAYLINER 210**, MERCURY 150, detailed and serviced, only 30 hours on boat and 150 Mercury outboard, Karavan bunk trailer, covers included., \$29,990, 856-298-3708 jimcollins55@hotmail.com 150166

**See Color Photo on the Internet**



**35' 1978 BRISTOL 35.5 RACER/CRUISER**, center board sloop, 40hp Westerbeke FWC  
**\$24,900**  
**732-899-8010**  
**sales@schraderyachts.com**  
148001

**See Color Photo on the Internet**



**20' 1994 PURSUIT CENTER CONSOLE**, boat, motor & trailer package, new electronics upgraded with year, new engine in 2015, invested \$17K, 90 hours, \$18,500 OBO, Call or Text 908-489-5098 151037

**See Color Photo on the Internet**



**18' 1989 BOSTON WHALER OUTRAGE II**, new Yamaha, good shape and runs well, **PRICE REDUCED!** \$9,500, Call or Text 908-489-5098 151039

**See Color Photo on the Internet**



**20' 2007 SEA DOO SPEEDSTER**, T/215hp, serviced yearly, trailer, nice shape, \$15,500, 609-693-9423 tidesendmarina1@gmail.com 148278

**TOHATSU 150HP BFT 4-STROKE**, control and cables, tack & harness, key switch, water separator, aluminum prop  
**\$13,600**  
**908-309-4016**  
**almarmarine1@gmail.com**

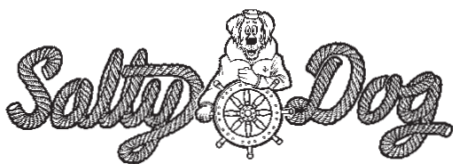
**See Color Photo on the Internet**



**25' 1974 MACGREGOR Sailboat**, 9.9 Johnson Extended shaft, excellent condition, comes with mast, main and jib sails, retractable keel, outboard motor, complete with trailer. Selling due to owners health  
**\$4,750 OBO**  
**410-335-6813**  
**rgconant@gmail.com**  
150442

**BOAT DOCTOR****Inboard/Outboard  
Repairs!****Call About Winterizing  
& Shrinkwrap****Fast Quality  
Service  
25 Years  
Experience****240-528-1154**3410 Leonardtown Rd  
Waldorf, MD 20601**Get it Up®**and down automatically with a  
**Good® Automatic Windlass**  
Automatic Free-Drop  
Rope/Chain Anchoring Systems**800-780-4655**Sales, Installation, & Service  
Barnegat, NJ  
[www.goodwindlass.com](http://www.goodwindlass.com)**Save \$\$\$**Anchor lines 100' to 1800'  
Rope/chain windlass lines  
Dock lines 15' to 50'  
(856) 547-5108Made in USA by Egg Harbor Rope  
5105 White Horse Pike (at MM#38)  
Egg Harbor, NJ 08215-0294**SAY YOU SAW IT  
IN THE SALTY DOG****DOMINION YACHT SALES**

Seeking Self-Motivated Yacht Brokers

If you enjoy spending time on the water, meeting successful new people,  
making \$\$\$\$\$ while having fun...1-888-314-5509 or [robert@dominionyachts.com](mailto:robert@dominionyachts.com)**Salty Dog Chesapeake Bay Edition  
Distribution Locations****We have over 900 distribution  
locations in MD-VA-DE-PA and DC.**If you can't find "The Salty Dog" publication in these  
supply stores or If you know of a Marina/Store that  
would like to distribute "The Salty Dog" call us toll  
free. 1-888-843-1585

254 Brick Blvd Suite 1, Brick, NJ 08723

**Toll Free 1-888-843-1585****Fax 732-477-9000**



# CLARKS LANDING

## YACHT SALES



**2018 Cruisers  
Yachts Cantius**  
**\$1,789,450**

**2015 Pursuit 385  
Offshore**  
**\$334,900**

**2017 Monterey  
378 SE**  
**\$259,995**

**2008 Grady White  
Canyon 336**  
**\$127,900**

**WE SPEED UP THE SALE BY  
TAKING A TRADE ON YOUR  
BOAT. CONTACT CLARKS FOR  
A HASSLE-FREE EXPERIENCE.**

*I was extremely impressed with the professionalism of the Clarks Landing NJ sales team. I was able to find the boat I was looking for and at a great deal! Even after the closing of my new boat, I was happy to have the staff at Clarks Landing list my other boat. They sold my boat in one week! I will only use Clarks Landing for any future boat sales or purchases.*  
- David, Clarks Landing Yacht Sales Customer

# WANT TO SELL YOUR BOAT FAST

A successful brokerage program starts with exposure. Due to our size, Clarks Landing can offer more exposure than most other brokers.

Our experienced, dedicated team handles the entire transaction, including financing, marketing, demonstration rides, haul outs, estimates & more.

List your boat where it is or at one of our facilities.

- ☒ **Free Land Storage Program**
- ☒ **In-Water Slips for Yachts**
- ☒ **Huge Marketing Budget**
- ☒ **Free Market Analysis**
- ☒ **We Take Trades**  
**(Most Other Brokers Don't)**
- ☒ **Family-Owned over 40 Years**

**DISCOVER THE CLARKS  
LANDING DIFFERENCE**

### ANNAPOLIS AREA

1442 Ford Road, Shady Side, MD 20764  
(410) 867-9550  
boatinfomd@clarkslanding.com

### JERSEY SHORE

847 Arnold Avenue, Point Pleasant, NJ 08742  
(732) 899-5559  
boatinfonj@clarkslanding.com

**WWW.CLARKSLANDING.COM**

Authorized dealer for



# WE HAVE BOATS!



## 2021 Models Arriving Daily!



**YAMAHA** BUILT TO LAST



**410.287.8280**

[www.AnchorBoat.com](http://www.AnchorBoat.com)

448 MAULDIN AVE | NORTH EAST, MD 21901



Parts & Service  
**General Boat Repairs**  
High & Dry Boat Storage