

Free!



# The Salty Dog<sup>®</sup>



## CHESAPEAKE BAY EDITION

Published Every Other Week • Distributed in Maryland, Delaware, Southern Pennsylvania and Virginia

### POWERBOATS & SAILBOATS ...Including Marine Services



**Largest Inventory of  
In Stock Boats in the Region!**  
302-945-2254  
[www.RudyMarine.com](http://www.RudyMarine.com)



**Largest Inventory of  
In Stock Pontoons in the Region!**  
302-945-2254  
[www.RudyMarine.com](http://www.RudyMarine.com)



32' 2006 TOPAZ EXPRESS, T/Cat C7 460hp, 2200 hours, 400 gallon fuel, 25 MPH, Furuno Navnet equip, new cushions & carpet, Onan 5kw gen, serious inquiries only, \$169,999, 732-547-5045, [frostheatandair@aol.com](mailto:frostheatandair@aol.com) 153914



46' 2002  
CARVER YACHTS  
466 MOTOR YACHT  
new bimini, enclosure,  
bow thruster, 8D house  
engine batteries,  
season slip included at  
SHM in Beach Haven, NJ,  
\$259,900  
973-479-1031  
[toddbrown@optonline.net](mailto:toddbrown@optonline.net)  
155439

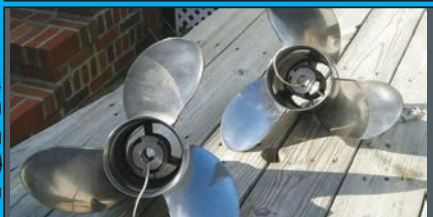
**List Your Boat  
As Low As \$49!**

Go to [www.thesaltydog.com](http://www.thesaltydog.com)  
to get started!

Private Boat Ads Only



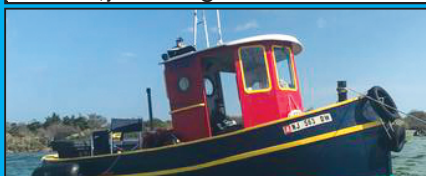
20' 1974 SAN JUAN, comes with 4 wheel trl w/roller bunks and 5hp engine, complete set of sails, with the roller bunks & keel up it's a snap to launch in less than 2' of water, Price is firm \$1,200, 301-646-4999, [johndullahan@comcast.net](mailto:johndullahan@comcast.net) 155389



(2) YAMAHA F300 SS PROPS, left and right, 15 1/4" X 19", BOTH \$700 OBO, 302-226-3734 154303



2009 MONTEREY 254 FS BOWRIDER  
BRAND NEW 5.7L Mercruiser 350 MPI engine,  
1 year engine warranty, runs perfect, GPS, canvas,  
bimini, very roomy, huge swim platform, fresh bottom paint,  
732-267-6822 • [cp77@comcast.net](mailto:cp77@comcast.net)



20' 1983 CUSTOM BUILT MINI TUGBOAT, custom wood/F/B  
20hp Diesel Yanmar, keel cooled dry stack exhaust, includes  
trailer, in water, JUST REDUCED! 14,000, 609-519-3583,  
[harbornj@yahoo.com](mailto:harbornj@yahoo.com) 153457

Annapolis, MD • St. Michaels, MD  
Deltaville, VA • Woodbridge, VA  
Delaware City, DE

**CONTACT US TODAY!**  
[info@curtisstokes.net](mailto:info@curtisstokes.net)  
410.919.4900

CURTIS  
STOKES  
& ASSOCIATES

[www.curtisstokes.net](http://www.curtisstokes.net)

**1-888-843-1585 • Private Boat Information on Page 18**



410-784-7624

10551 Eldon Willing Rd  
Chance, MD 21821

bobbykemp@scottscovemarina.com



TOHATSU



75HP

90HP

115HP



# Upper Chesapeake Yacht Sales

**John Curry • (610) 299-3598**  
**www.upperchesapeakeyachtsales.com**



By far the nicest custom restoration of a 28 Bertram SF I have seen. Fiberglass hardtop, flybridge seats 5 or 6 comfortably, new helm steering, gauges, etc. New custom interior, galley, water system, head. New paint throughout. Well over \$100,000 spent in restoration alone makes this one a much see! Owners change of plans is your buying opportunity.

|   |  |   |  |   |
|---|--|---|--|---|
| <p><b>Pending!</b></p> <p><b>56' '03 Carver 564 CMY</b><br/>T/674 Volvos, very nice<br/>\$299,000</p> | <p><b>42' '86 Carver Aft Cabin</b><br/>T/350hp Crusaders,<br/>Trades Considered<br/>\$49,000</p> | <p><b>REDUCED!</b></p> <p><b>34' '84 Silverton FB</b><br/>Convertible, T/270hp, gen,<br/>AC, very nice • \$25,900</p> | <p><b>31' '13 Bertram Custom Sportfish</b> • Yanmar Dsls,<br/>160 hrs • Pending</p>                | <p><b>29' '92 Sea Ray Sundancer</b><br/>7.4L Merc, Bravo, AC, mint<br/>cond, trailer • \$22,900</p> |
| <p><b>29' '84 Dyer Soft Top Express</b> • 200hp diesel, very nice • \$64,900</p>                      | <p><b>28' '74 Bertram FB</b><br/>newer 315 Inboards, AC,<br/>clean • \$18,500</p>                | <p><b>26' '07 Bluefin Custom Sportfish CC</b> • S/Diesel, tower, mint cond • \$64,900</p>                             | <p><b>23' '96 Chaparral,</b><br/>5.7L Mercruiser, Bravo III,<br/>trailer, very nice • \$11,900</p> | <p><b>21' '00 Sea Ray 215 Express Cruiser</b> • 2007 trailer, very clean • \$14,500</p>             |

**28' '19 Regulator CC, T/300hp Yamahas, 30 hours, loaded, mint condition..... COMING SOON!**  
**27' '02 May-Craft Pilothouse, T/'06 200hp E-Tec, trailer, nice ..... \$39,900**



**Expect The Same Superior Service From Our Brokerage That You Get From Our Marina**

**BOAT SALES & BROKERAGE**  
**• Financing & Insurance Available •**

**WORTON CREEK MARINA**  
 23145 Buck Neck Road • Chestertown, MD 21620  
**(410) 778-3282**

# CALL TO RESERVE YOUR 2022 SLIP OR RACK SPOT

## Best and Fastest Access to the Bay

- 100+ Wet Slips
- 70+ Indoor Racks
- 50+ Outdoor Racks & Trailer Parking
- High Speed Wireless Internet at all Slips
- In/Out Service (call ahead)



PARISH CREEK  
LANDING  
Marina • Boatyard • Boatel

"WE WANT TO BE YOUR BOAT'S HOME!"

### CALL FOR OUR SPECIALS!

4819 Woods Wharf Road  
Shady Side, MD 20764

**410-867-4800**  
[parishcreeklanding.com](http://parishcreeklanding.com)

YEAR ROUND  
**SLIPS • BOATEL  
SERVICE**  
Direct Access to the Bay

## GOLDSBOROUGH'S MARINE



"Where Happiness Is Just A Boat Ride Away"

[www.crisfield.com/gold](http://www.crisfield.com/gold)

**LOADRITE**

|                                 |            |
|---------------------------------|------------|
| 14F1000WT (1000LBS) Galv. ....  | \$1,325.00 |
| 16F1200WT (1200LBS) Galv. ....  | \$1,395.00 |
| 16170076DWT (1700LBS) Galv. ... | \$2,395.00 |
| 18150076DWT (1500LBS) Galv. ... | \$2,595.00 |



|                |            |
|----------------|------------|
| 3.5HP MH.....  | \$1,030.00 |
| 4HP MH.....    | \$1,375.00 |
| 8HP MH.....    | \$2,095.00 |
| 20HP ELH ..... | \$3,495.00 |
| 25HP MH.....   | \$3,490.00 |



## Goldsborough's Marine

709 W. Main St., Crisfield, Maryland  
Ph.# 410-968-0852 • Email: [merc71@verizon.net](mailto:merc71@verizon.net)





**IN STOCK NOW FOR IMMEDIATE PURCHASE**

F250XB  
F200XB  
F200LB  
F150XB  
LF150XB  
F150LB  
VF150XB  
VF150LB  
F115XB  
VF115LA  
F115LB



F90LB  
F70LA  
F60LB  
T60LB  
T50LB  
F40LA  
F40LEHA  
F25LWHC  
F9.9SMHB  
F6SHA  
F4SHA  
F2.5SMHB  
F2.5LMHB

**AVAILABLE  
MODELS**

**AVAILABLE  
MODELS**

**RUDY MARINE IS RENOWNED FOR  
EXPERT ENGINE RIGGING SERVICES**

**VERY LIMITED QUANTITIES ON SOME MODELS**



**DEALER INQUIRIES WELCOME**

32606 DUPONT BOULEVARD, DAGSBORO, DE 19939  
ONLY MINUTES FROM THE CAPE MAY-LEWES FERRY

**302-945-2254**

DELAWARE HAS

**NO SALES TAX!**



# SAVE when you Sell ...and when you Buy

*boaters first*<sup>TM</sup>  
**yachtx.com**

The trusted alternative to high cost brokerage and the hassle & risks of FSBO, we make selling your boat easy, safe and produce better outcomes with professional advisors, Web transaction management, escrow and multi-platform marketing - all for just 1.5% or less.

Ask about our buyer representation rebate  
... and YachtX Rewards<sup>TM</sup> referral program.

boaters saving 85% in selling costs through yachtx.com



boaters receiving thousands in buyer rebates through yachtx.com



## 443.888.9190

"YachtX", "Boaters First", "YachtX Rewards" are trademarks of YachtX, Inc.





**CAROLINA  
SKIFF****23 Ultra****SEA  
CHASER**  
By: Carolina Skiff, Inc.**24 HFC**

Powered by:



**DANNY'S MARINE**  
**(410) 228-0234 • www.dannysmarine.com**  
 Located on US Rt 50 (mile marker 86) • Chateau Drive near Linkwood, MD  
**dannysmarine@comcast.net**

Limited Time Offers. Not all models qualify. See Participating Suzuki Marine dealer for details or visit [www.suzukimarine.com](http://www.suzukimarine.com)  
 ©2020 Suzuki Motor of America, Inc.

Fishin' Boats From  
Fishin' Folks

# HOT SUMMER SAVINGS!

**NEW PRICE!**  
**\$24,500**



~~\$26,900~~

**1998 Palm Beach 21 CC - Yamaha 150hp  
 4 stroke and new electronics, with trailer**

**\$159,900**



**2006 Pursuit 345 Drummond Runner LS -  
 Twin Yamaha 300hp, 186 hours, with trailer**

**\$75,000**



**2001 Parker 23 SE - New Yamaha 200hp with 3-year  
 warranty, Garmin electronics & radar, Rhodan trolling motor  
 with 36v Lithium battery, 2021 Trailer**

**\$99,950**



**2016 May-Craft 2700 Cabin XL - LOADED  
 twin Yamaha 200hp 4 strokes, with trailer**

**GOOTEE'S  
MARINE**

South of Cambridge On Maryland's Eastern Shore  
 1439 Hooper's Island Road, Church Creek, Maryland

**May-Craft**  
 The Perfect Boat In Your Size

**G3**

**KW**  
 KEY WEST

**800-792-0082**  
**Gootees.com**



**Worldwide Yacht Sales | Yacht Charters | New Yacht Construction**



1999 89' Custom - \$169,000  
Lin Earley - 757.672.2778



2005 60' Hatteras - \$1,100,000  
Lin Earley - 757.672.2778



1930 56' Jakobson & Robertson - \$215,000  
Curtis Stokes - 410.919.4900



1988 46' Jefferson - \$50,000  
Lin Earley - 757.672.2778



1974 42' Grand Banks - \$125,000  
Curtis Stokes - 410.919.4900



1990 41' Mainship - \$59,900  
Jason Hinsch - 410.507.1259



1999 40' Custom - \$139,000  
David Robinson - 410.310.8855



1989 38' Marine Trader - \$49,500  
Curtis Stokes - 410.919.4900



2003 33' Wellcraft - \$75,000  
Tristan Weiser - 609.420.0469



2015 30' Cutwater - \$219,000  
Greg Merritt - 813.294.9288



2000 30' Pursuit - \$76,500  
Chris Curlett - 305.522.1255



2018 29' Ranger Tug - \$295,000  
Michael Martin - 440.781.8201

To see more details about these and all other yachts around the globe, please visit our website below.

Telephone: 410.919.4900 • Email: [info@curtisstokes.net](mailto:info@curtisstokes.net)

**[www.curtisstokes.net](http://www.curtisstokes.net)**



# ALMARS

**PLEASE CALL FOR UPDATES!**  
Motors Are Slowly Arriving!

We Are A Full Service, Premier Mercury Outboard  
**Repair Center! Let Our Certified Mercury Technicians**  
Service Your Mercury Motor Needs!

**CALL  
NOW TO  
ORDER  
YOUR  
4-STROKE!**



150  
4-stroke  
Black



150 ProXS  
4-stroke  
Black



175XL ProXS  
4-stroke  
Black



200  
Sea Pro  
Black



225XL  
4-stroke  
Black



250 XL  
4-stroke  
White

## NOW IN STOCK!

### SEVERAL SMALL MOTORS 2.5HP - 150HP!

Call for Configuration & Compatibility!



**2.5HP  
3.5HP  
4HP  
5HP**

**6HP  
8HP  
9.9HP  
15HP**

**20HP  
25HP  
50HP  
60HP**

**75HP  
115HP  
150HP**



**THESE WILL GO FAST!**

**100's of Used Cowllings  
In Stock!  
Call for Availability!**

We Now Offer  
**INJECTOR SERVICE**  
with ONE Day Turnaround

**REMANUFACTURED OUTBOARD ENGINE SALE!**

90hp - 250hp 1 Full Year Warranty

Starting As Low As \$5,495 Call for Details!

**CALL US  
FOR GREAT  
DEALS ON  
NON-CURRENT  
POWERHEADS!**

Call us for current pricing new current  
and noncurrent outboards  
**NO SALES TAX IN DELAWARE!**

701 Washington St., New Castle, DE

**302-328-8541**

[www.almarsoutboards.net](http://www.almarsoutboards.net)

HOURS: Monday - Friday: 8am - 5pm  
CALL FOR GREAT PRICING ON NEW  
& USED MERCURY OUTBOARDS

**NO HIDDEN COSTS**  
NOT RESPONSIBLE FOR TYPOGRAPHICAL ERRORS



All prices good  
while supplies last!

Pricing includes all rebates.



## WANT TO SELL YOUR BOAT FAST?

A successful brokerage program starts with exposure. Due to our size, Clarks Landing can offer more exposure than most other brokers.

- ✓ Reduced Commissions
- ✓ Free Land Storage Program
- ✓ In House Marketing Team
- ✓ Family-Owned over 40 Years
- ✓ **Free Drone Media Package for Listings over \$75K**  
Locations in NJ & MD

**Get A Free Market Analysis**

[www.ClarksLanding.com](http://www.ClarksLanding.com)

# WE HAVE BOATS IN STOCK!



## CLARKS LANDING

YACHT SALES

**Roughneck**  
High performance RIB's



The Roughneck 1010 is in stock at Clarks! She is a maintenance free, luxurious, high quality, low draft, high-performance RIB. With her sleek lines & impressive award winning double stepped deep V hull design, the vessel reaches offshore-performance competitors can't match with top speeds of over 77MPH with twin 350hp Mercury engines. The 33' Roughneck is a perfect day-boat with a large storage compartment in the console, an electric anchor & a refrigerator and bathroom option.

**CUTWATER**  
Factory Direct Pricing



**BENETEAU**



New Dealer For

**Welcraft**



**CLARKS LANDING**  
YACHT SALES

on the Manasquan River  
847 Arnold Avenue  
Point Pleasant, NJ

732-899-5559 • [www.ClarksLanding.com](http://www.ClarksLanding.com)





**X MIDLANTIC  
X MARINE  
= CENTER**  
**302-436-BOAT (2628)**

*Closed Sunday & Monday  
Tuesday-Friday 8AM-4:30PM  
Saturday 8AM-4PM  
36624 DuPont Boulevard Selbyville, DE  
www.midlanticmarinecenter.com*

# NEW STARCRAFT PONTOONS & DECK BOATS IN STOCK AND READY FOR DELIVERY!



Trailer Available at Additional Cost  
2023 Starcraft LX16F  
Yamaha F40LA 4-stroke  
MSRP \$28,834 • Call for Price



2023 Starcraft LX16R  
Yamaha F40LA 4-stroke  
MSRP \$28,834 • Call for Price!



2023 Starcraft EX20C  
Yamaha F70LA 4-stroke  
MSRP \$40,411 • Call for Price!



2023 Starcraft LX22R  
Mercury 115hp 4-stroke Command Thrust  
MSRP \$46,055 • Call for Price!



2022 Starcraft LX22F  
Yamaha F90LB 4-stroke  
MSRP \$42,583 • Call for Price!



2022 Starcraft CX23DL  
Yamaha Vmax VF115LA 4-stroke  
MSRP \$63,387 • Call for Price!



2022 Starcraft EX24R  
Yamaha F115LB 4-stroke  
MSRP \$53,531 • Call for Price!



2022 Starcraft EXS-3 Tritoon  
Yamaha F150XB 4-stroke  
MSRP \$64,479 • Call for Price!



2022 Starcraft SLS-3 Tritoon  
Yamaha F150XS 4-stroke  
MSRP \$68,863 • Call for Price!



2022 Starcraft SLS-3 Tritoon  
Yamaha F150XB  
MSRP \$70,838 • Call for Price!



2022 Starcraft SLS-5 DC Tritoon  
Mercury 300XL DTS 4-stroke  
MSRP \$102,810 • Call for Price!



Trailer Available at Additional Cost  
2023 Starcraft SVX 171 OB Deck Boat  
Mercury 90hp 4-stroke  
MSRP \$40,675 • Call for Price!

## Discount Trailer Sales • Call for Pricing!



**5 STAR TRAILERS**

**LOADRITE**





# BETTER SAFE THAN SORRY

When things go south on the water, it can happen in a flash so make sure you have towing from TowBoatUS. It's the biggest and best towing service around, with 600+ boats on the water, the red boats are on your waterways and ready to help at a moments notice.

**Getting You Back Safely is Our #1 Goal –  
GET UNLIMITED TOWING TODAY!**

**BoatUS.com/Towing**  
**800-395-2628**



Details of services provided can be found online at BoatUS.com/Agree. TowBoatUS is not a rescue service. In an emergency situation, you must contact the Coast Guard or a government agency immediately.



**MIDLANTIC  
MARINE  
CENTER**  
**302-436-BOAT (2628)**

Closed Sunday & Monday  
Tuesday-Friday 8AM-4:30PM  
Saturday 8AM-4PM  
36624 DuPont Boulevard  
Selbyville, DE  
[www.midlanticmarinecenter.com](http://www.midlanticmarinecenter.com)



It is with Heavy Hearts that Midlantic Marine Center says Goodbye to Kurt Rosenberg.

We Continue Moving Forward, Honoring Your Legacy of 21 Successful Years in Business and Strive to Make You Proud for Many years to Come.

*R. Kurt Rosenberg*  
5/3/1962 to 6/9/2022



**MARINE TECHNICIAN TRAINING**

**RIDE THE CREST**  
to CAREER SUCCESS



**ENROLL FOR TRAINING TO BECOME A PROFESSIONAL  
MARINE SERVICE TECHNICIAN**

Our in-depth program includes training in: Seamanship, AC & DC Electrical, ABYC Standards, Air Conditioning & Refrigeration, Mechanical Systems, Stern Drives/Transmissions, Computerized-Fuel Injected Inboard and Outboard Engines, Inboard, Outboard and I/O Systems, Electronic Diesel Engines (Cummins QSB 5.9 380 HP Common Rail Trainer), Fiberglass & Gelcoat Repair, Plumbing and Sanitation Systems.

Financial Aid for those who Qualify • Career Placement Assistance



CALL NOW

**866-905-4278**

[www.autotraining.edu](http://www.autotraining.edu)

900 Johnsville Blvd., Warminster, PA 18974

Supported by



with Training Materials & Equipment

For required program disclosure information, please go to [www.autotraining.edu/consumerinformation](http://www.autotraining.edu/consumerinformation).



# ANNAPOLIS CRUISAIR, INC.

Family Owned & Operated for Over 50 Years

**SALES • SERVICE • INSTALLATION**



**U-LINE**  
U-Line Icemakers  
110/115vAC

We will meet or beat  
any competitive  
price quote for  
these products!



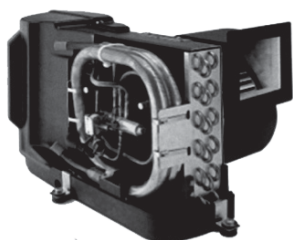
**Espar**

Marine Diesel  
Heaters



**Cruisair®**

New Turbo  
Air Conditioners • Heat Pumps



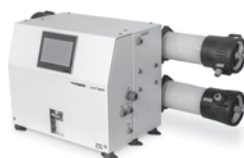
• We Have • BREATHE EASY AIR FILTERS



➔ **DOMETIC**

**SPOTZERO®**  
Fresh Water Reverse Osmosis

**Water Purification Systems**



**Vitrifrigo**  
REFRIGERATORS



**Sentry™**  
*Cruisair*

**BATTERY  
CHARGERS**

SAFEST  
CHARGER  
ON THE  
MARKET!



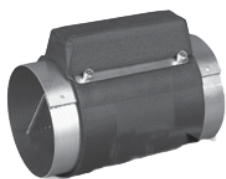
**Eskimo Ice  
600 Ice Pump**

Provides up to 600 lbs. of fresh  
ice in a day from your ships  
water tank.



**STINKY BOAT?**

We Have **NEW**  
Breathe Easy  
Air Purifiers



MARINE AIR SYSTEMS®  
**AIRRRRRRR**  
by Dometic GROUP



**KOHLER.**

- Generators -




**Fischer Panda**

**Onan**

2124 Renard Ct. • Annapolis, MD  
(410) 224-0970 • (410) 974-6136 • Fax (410) 224-0050  
[www.annapoliscruisair.com](http://www.annapoliscruisair.com)





**YOUR  
ENJOYMENT  
MADE EASY**

**GEICO<sup>®</sup>**  
FOR YOUR BOAT

Get a GEICO quote for your boat and, in just 15 minutes, you'll know how much you could be saving. If you like what you hear, you can buy your policy right on the spot. Then let us do the rest while you enjoy your free time with peace of mind.

[geico.com/boat](https://geico.com/boat) | 1-800-865-4846

Some discounts, coverages, payment plans, and features are not available in all states, in all GEICO companies, or in all situations. Boat and PWC coverages are underwritten by GEICO Marine Insurance Company. In the state of CA, program provided through Boat Association Insurance Services, license #0H87086. GEICO is a registered service mark of Government Employees Insurance Company, Washington, DC 20076; a Berkshire Hathaway Inc. subsidiary. © 2020 GEICO 20\_206641

# ADVERTISERS INDEX

|                               |       |                           |        |
|-------------------------------|-------|---------------------------|--------|
| ALMARS.....                   | 9     | GOOTEE'S MARINE.....      | 7      |
| ANCHOR BOATS.....             | 24    | HANCE & SMYTHE.....       | 17     |
| ANNAPOLIS CRUISAIR.....       | 14    | J.J. BEST BANC & CO.....  | 21     |
| ATC AUTO/MARINE TRAINING..... | 13    | MIDLANTIC MARINE CENTER   | 11, 13 |
| BOAT LIFTS UNLIMITED.....     | 16    | PARISH CREEK LANDING..... | 4      |
| BOAT US.....                  | 12    | RUDY MARINE.....          | 5      |
| CLARKS LANDING.....           | 10    | SCOTT'S COVE MARIA.....   | 2      |
| CURTIS STOKES.....            | 8, 22 | UPPER CHESAPEAKE YS.....  | 3      |
| DANNY'S MARINE.....           | 7     | UTSCH'S YACHT SALES.....  | 17     |
| GEICO.....                    | 15    | YACHTX.....               | 6      |
| GOLDSBOROUGH'S MARINE.....    | 4     | WATERFRONT.....           | 23     |

## THE LARGEST LOW PROFILE BOAT LIFT MANUFACTURER IN THE USA

**CALL  
US FOR  
YOUR LOCAL  
DEALER!**



### Choose The Right Boat Lift, Choose

# MAGNUM

## BOAT LIFTS

Personal Watercraft Lifts

- Low Profile Design • Low Maintenance • 2/5 Yr Warr.
- Outside Walkway • Galvanized Steel Construction
- Aluminum Cradles Available • Capacity 800-40,000 lbs. [www.magnumlift.com](http://www.magnumlift.com)

Fully  
Insured

# BOAT LIFTS UNLIMITED

## 410-674-3100 • 1-800-268-5911

**WE SERVICE  
MOST MAKES  
OF BOAT  
LIFTS!**

Located in Odenton, MD, this full-service boat lift manufacturer has a network of over 180 distributors serving the Chesapeake Bay, Great Lakes and Atlantic Coast with Magnum Boat Lifting Products. Boat Lifts Unlimited is dedicated to customer satisfaction through prompt, courteous service on most existing boat lifts and timely installation of new boat lifts. Quality materials, attention to detail and innovative design have made Boat Lifts Unlimited one of the largest boat lift manufacturers in the U.S.



# UTSCH'S YACHT SALES

BETWEEN CANAL AND SCHELLENGER'S LANDING

**Rt. 109 & Cape May Canal, Cape May, NJ (609) 884-BOAT (2628)**

LICENSED

[www.capemayharbor.com](http://www.capemayharbor.com)

INSURED



**35' 1975 Gulfstar Trawler,**  
T/DsIs • \$9,900



**35' 2000 Henriques Express,**  
T/Yanmar DsIs, tower, elects • \$125,000



**32' 1993 Carver,**  
T/Gas V8s • \$9,900



**31' 1989 Chris Craft Commander,**  
T/Crusader V8 454 • \$24,900



**29' 2003 Maxum 2900 SCR**  
I/O, clean, • \$37,000



**28' 2002 Bayliner 2855 Ciera,** 350hp  
Merc I/O, in water, ready to go • \$14,900



**28' 1995 Bayliner Cruiser,**  
V8 Mercruiser I/O, \$7,900



**28' 1988 Carver,**  
T/V6 Mercruisers, sleeps 4-6, \$7,900

|  |                         |  |                |
|--|-------------------------|--|----------------|
| <b>36' 1979 Pacemaker FV Convertible,</b> T/350hp V8.....                  | <b>MAKE OFFER</b>       | <b>28' 1974 Bertram,</b> T/V8 .....                                      | <b>SOLD</b>    |
| <b>34' 1981 Silverton FB Conv,</b> T/Crusader V8 gas.....                  | <b>\$2,500</b>          | <b>28' 2005 Pursuit Walkaround,</b> T/Yamaha 225hp OBs, very clean ..... | <b>SOLD</b>    |
| <b>33' 1994 Carver,</b> T/Crusader V8 gas .....                            | <b>\$30,000</b>         | <b>25' 1973 Bristol Sloop,</b> 9.9hp outboard.....                       | <b>\$1,500</b> |
| <b>32' 2006 Rinker,</b> T/V8 .....   | <b>SOLD</b>             | <b>17' 2002 Aquatron,</b> Merc I/O, trailer.....                         | <b>\$6,500</b> |
| <b>30' 1985 Century 300 Grande,</b> T/V8 gas inboard .....                 | <b>Reduced \$3,500</b>  | <b>15' Custom Wood Skiff,</b> nice condition.....                        | <b>\$750</b>   |
| <b>29' 2001 Seamaster Classic,</b> 250hp Mercruiser I/O .....              | <b>\$6,000</b>          | <b>- MISC EQUIPMENT -</b>  |                |
| <b>29' 1982 Aquasport,</b> T/PCM V8 gas, 330hp each, elects ...            | <b>Reduced \$11,900</b> | <b>Approximately 60 lineal feet of 10' wide concrete,</b>                |                |
| <b>28' 2002 Bayliner 2855 Ciera,</b> 350hp Merc I/O, in water, ready to go | <b>\$14,900</b>         | <b>Bellingham Marine Floating Docks, very heavy construction ..</b>      |                |
| <b>28' 1976 Luhrs Flybridge Sedan,</b> Crusader V8.....                    | <b>\$1,500</b>          | <b>1950 Hydraulic Cutterhead Dredge, 471 Detroit Diesel, 6' pump.</b>    |                |
|  |                         | <b>\$29,000</b>  |                |

Since  
1959

## HANCE and SMYTHE INC.

Closed  
Monday &  
Tuesday

### Used Boats Specials!



**2019 Boston Whaler**  
**19 Montauk**  
Mercury 150hp  
4-stroke, sun top,  
console cover,  
port & starboard aft  
seats, fishing package,  
electronics,  
**\$46,500**



**2011 Key West**  
**20 Bowrider**  
Yamaha 150hp 4-stroke,  
bimini suntop,  
2-part mooring cover,  
stern seat, livewell,  
very good condition  
**\$24,500**



**1998 Sunbird**  
**19 Bowrider**  
2017 Evinrude 150hp  
E-Tec, mooring  
canvas, bimini suntop,  
full stern seat, port and  
stid lounge seats,  
very clean, runs great  
**\$18,500**



**2108 Boston Whaler**  
**23' Vantage DC**  
250hp Mercury Verado  
4-stroke, bimini, suntop,  
custom mooring cover,  
fishing package: livewell,  
raw water washdown,  
beach board ladder,  
stereo, freshwater shower  
**\$104,500**

**Boston Whaler**  
**Parker • Key West**  
**Yamaha**

[www.hanceandsmythe.com](http://www.hanceandsmythe.com)  
**(609) 597-7813**

**1225 East Bay Ave**  
**Manahawkin, NJ**

# FREE LISTING WITH PHOTO ON THE INTERNET

## PRIVATE AD RATES

- ☐ INTERNET ONLY UP TO 1 YEAR..... \$39<sup>00</sup>  
☐ 3 ISSUES NO PHOTO CLASSIFIED..... \$49<sup>00</sup>  
☐ 3 ISSUES WITH COLOR PHOTO WITH COLOR PHOTO ON INTERNET..... \$59<sup>00</sup>  
☐ INTERNET FEATURE ADD ON 4 WEEKS AVAILABLE WITH AD PURCHASE ONLY! ON THE SALTY DOG HOME PAGE..... \$49<sup>00</sup>  
☐ FRONT COVER..... \$40<sup>00</sup>  
☐ FACEBOOK FEATURE..... \$15<sup>00</sup>  
☐ PUBLICATION MAILED TO YOU..... \$3<sup>00</sup>

## TOTAL

### FRONT COVERS ARE BASED ON AVAILABILITY

- ☐ CHECK    ☐ MONEY ORDER    ☐ DISCOVER  
☐ MASTERCARD    ☐ VISA    ☐ AMERICAN EXPRESS

CC#

Expiration Date \_\_\_\_\_ Security Code \_\_\_\_\_

Advertiser's Name \_\_\_\_\_

Address \_\_\_\_\_

Phone \_\_\_\_\_

Where did you pickup "The Salty Dog"?

Store \_\_\_\_\_

Town \_\_\_\_\_

Fill out the description form below, **up to 125 characters (including spaces & punctuation) of advertising**. Please put one character per space beginning with the motor. Include a check, money order or credit card, and mail to us with a good quality COLOR photograph of your boat. Photos will only be returned if accompanied by a self-addressed stamped envelope.

## AD COPY

FT. \_\_\_\_\_ YR. \_\_\_\_\_

MANUF. / MODEL \_\_\_\_\_

MOTOR \_\_\_\_\_

ACCESSORIES \_\_\_\_\_

LOCATION OF BOAT \_\_\_\_\_, \_\_\_\_\_, \_\_\_\_\_  
City State Zip Code

PRICE \_\_\_\_\_

PHONE # \_\_\_\_\_

EMAIL \_\_\_\_\_

**Send to: The Salty Dog**  
**254 Brick Blvd • Suite 1**  
**Brick, NJ 08723**

# 888-843-1585

Fax (732) 477-9000 • Email: [info@thesaltydog.com](mailto:info@thesaltydog.com)

No refunds after Ad is processed. • Advertiser will be responsible for \$20 fee on returned checks.

**YOUR BOAT LISTING CAN ALSO BE SUBMITTED ON THE INTERNET [www.thesaltydog.com](http://www.thesaltydog.com)**

## SPECIAL FEATURES

PRIVATE BOAT ADS .....Pg. 19-20

## SUBSCRIPTION CHESAPEAKE BAY

SALTY DOG is published Bi-weekly 25 times a year.

Papers are mailed **FIRST CLASS**. Your first issue will be mailed within 1 week. To subscribe, just fill in the amount of issues and multiply by \$2.00\*

No. of issues \_\_\_\_\_ x \$2.00\* = Total Cost \_\_\_\_\_

☐ CHECK    ☐ MONEY ORDER    ☐ MASTERCARD    ☐ VISA

Credit Card No. \_\_\_\_\_

Exp. Date \_\_\_\_\_

Signature \_\_\_\_\_

Name \_\_\_\_\_

Address \_\_\_\_\_

City \_\_\_\_\_ State \_\_\_\_\_ Zip \_\_\_\_\_

Telephone \_\_\_\_\_

\*Canada Subscription Add 10% - Bermuda Subscription Add 30%  
 Outside the Continental USA Add 50% • Credit Cards Only Outside USA



Mail To: THE SALTY DOG, 254 Brick Blvd • Suite 1, Brick, NJ 08723



A Bi-weekly Publication for  
 Powerboats, Sailboats, Marine  
 Equipment, Supplies, Services,  
 Waterfront and Photo Ads

For More Info on Display Ads or Internet Listings

Call 888-843-1585 • Fax (732) 477-9000

[info@thesaltydog.com](mailto:info@thesaltydog.com) • Mon.- Fri. 9:00 am to 4:00 pm



## See Color Photo on the Internet



36' 2002 SPECTRE CAT, Twin 500hp Mercruisers, low hours, extremely well kept, immaculate condition, trailer included, \$89,995, 732-864-6937 jeremypeters2002@gmail.com 153768

## See Color Photo on the Internet



31' 1982 BERTRAM, Cummins 6BTA270hp Diamond Series, custom hardtop w/rocket launcher, LED spread lights, Rupp double spreader ORs & rigged Eisenglass wrap around, elects, shore power charger & Xantrex PRO watt inverter, \$140,000, 732-899-8010 sales@schraderachts.com 155559

## See Color Photo on the Internet



28' 1990 SEA RAY 280 Sundancer, Twin Mercury V-6, VHF, Garmin GPS, DF, Fridge, Microwave, FW tank, 120 Gal fuel, Full Canvas, Clean and Dry Cabin, Marina Maintained, \$19,900, 908-309-4016 almaraine1@gmail.com 154766

## See Color Photo on the Internet



36' 1987 SILVERTON convertible, T/350 Crusader CID 270hp, excellent condition, runs very good, full enclosure, bottom paint 8/21, new sea pumps, FWC, Price Reduced, \$18,000, 410-365-0318 gseacurty@aol.com 153759

## See Color Photo on the Internet



2014 Seahunt

30' 2014 SEA HUNT 30 GAMEFISH  
T/300hp Yamahas, 490 hours  
\$149,500, 908-489-5098

154798

## See Color Photo on the Internet



282 Mako 2006

28' 2006 MAKO 282  
only 130 hours, \$20K in upgrades in 2021  
908-489-5098

154795

## See Color Photo on the Internet



**34' 1988  
WELLCRAFT  
GRAN SPORT,**  
T/7.4L/454's,  
New Risers, manifolds &  
tune-ups. 2nd owner w/  
all svc. records for 24 yrs.  
Runs & looks great.  
2022 slip incl.  
**\$18,000**  
**201-240-8747**  
**tom.hunter**  
**@dg3.com**

153428

## See Color Photo on the Internet



30' 2005 GRADY-WHITE 300 MARLIN, Twin Yamaha F250s, new canvas enclosure & outriggers, \$129,900, 732-899-8010 sales@schraderachts.com 155529

## See Color Photo on the Internet



29' 2007 REGULATOR CC  
Text for more pictures and information  
\$149,500, 908-489-5098

154391

## See Color Photo on the Internet



27' 1994 CHAPARRAL Signature 27, White and Teal cabin cruiser w/454 Mercruiser engine and outdrive. Looks good/runs great! 3-axle trailer included., \$11,000, 240-298-2799 mosleykazoku@hotmail.com 155600

## See Color Photo on the Internet



26' 2004 CHAPARRAL 260 BR, Merc 496 MPI FW I/O, Bili, dual batts, Fire Boy fire suppression system, marine head, cockpit table, ski tow bit, fresh water sink & cockpit shower, Standard Horizon VHF & bimini, \$30,000, 732-899-8010 sales@schraderachts.com 155560

## See Color Photo on the Internet



SeaSwirl 2901 Year 2005

29' 2005 SEASWIRL 2901  
Yamaha 4-strokes, only 480 hours  
\$77,900, 908-489-5098

154796

## See Color Photo on the Internet



Steiger 25DV Miami

25' 2020 STEIGER CRAFT 25DV MIAMI  
150 hours mint  
\$149,500, 908-489-5098

154790

## See Color Photo on the Internet



32' 2021 BOSTON WHALER 325 CONQUEST, T/Mercury 300hp Verados, electronics, 169 hours, loaded, \$444,900, 631-327-0843 stoneharboryachts@gmail.com 154072

## See Color Photo on the Internet



Grady 282 year 2005

28' 2005 GRADY-WHITE 282  
Yamaha 4-stroke  
\$69,500, 908-489-5098

154794

## See Color Photo on the Internet



25' 2019 SPORTSMAN 252 OPEN, Yamaha F300 UCA, 12" Garmin MFD w/radar, outriggers, windlass, livewell, underwater lights, \$119,900, 732-899-8010 sales@schraderachts.com 154578

## See Color Photo on the Internet



25' 2012 CHRIS CRAFT LAUNCH 25 HERITAGE EDITION, Mercruiser 8.2L, 460 hours, \$110,000, 732-899-8010 sales@schraderyachts.com 154835

## See Color Photo on the Internet



23' 2001 May-Craft 2300 PILOTHOUSE, 2019 150hp Honda w/warranty til July 2024, low hours, radar, GPS, trailer, \$32,000 OBO, 917-817-5084 info@deepwaterlanding.com 155363

## See Color Photo on the Internet



20' 1994 HUETHER GARVEY, 2004 Mercury 90hp 4-stroke, Garmin GPS/DF, compass, Kobelt control, Sea Star hydraulic steering, 2 batteries, \$4,000, 443-521-0609 rich.7119@yahoo.com 155622

## See Color Photo on the Internet



25' 2008 CHAPARRAL 256 SSI, Volvo I/O, new transom assembly, 165 original hours, ready to go! **MAKE OFFER!** \$36,900, 917-817-5084 info@deepwaterlanding.com 155615

## See Color Photo on the Internet



22' 2001 CENTURY DUAL CONSOLE, 200hp Yamaha SWS, bimini, new Garmin, new canvas, new cushion upholstery, bottom paint, Bluetooth stereo, trailer, \$21,500, 732-948-6003 jshank925@gmail.com 154952

## See Color Photo on the Internet



19' 2001 CHAPARRAL Sport ssi, clean condition, 240 hrs on engine 250 Volvo Penta engine, comes with Gator trailer, \$20,000, 443-856-8700 thyen1318@gmail.com 154701

## See Color Photo on the Internet



**Grady Dolphin 251**  
25' 1994 GRADY-WHITE 251 DOLPHIN clean  
\$19,500, 908-489-5098

154791

## See Color Photo on the Internet



21' 1999 GRADY-WHITE Walk around, 175 Yamaha, Runs great. Engine is a 2 stroke. In marina. Just serviced and painted. Comes with trailer. Clean Delaware title. \$24500 obo., \$24,500, 302-650-9969 emkat011@gmail.com 155661

## See Color Photo on the Internet



18' 1998 PARKER CC, Yamaha 130hp 2-stroke, t-top, rocket launcher, spreader light, electronics, SS bow rail, salt water washdown, 3 blade SS prop, forward console seat w/cushion, cooler seat w/cover, \$14,900, 732-899-8010 sales@schraderyachts.com 155561

## See Color Photo on the Internet



25' 1998 SEA RAY 250 SUNDANCER, V8 Mercruiser, Bravo III, full canvas enclosure, bimini, \$18,000, 732-899-8010 sales@schraderyachts.com 155616

## See Color Photo on the Internet



20' 2013 CUSTOM BUILT Mini Tugboat, custom wood/ FB 20hp Diesel Yanmar keel cooled dry stack exhaust inc trailer, in water, JUST REDUCED!, \$14,000, 609-519-3583 harbortnj@yahoo.com 153457

## See Color Photo on the Internet



16' 2016 Crestliner 1650 DISCOVERY, side console, Mercury 50hp, 3 batteries, full cover, FF, trolling motor, 37 hours, like new, \$15,900, 908-309-4016 almarine1@gmail.com 154951

## See Color Photo on the Internet



**Grady 236 Fisherman**  
23' 2020 GRADY-WHITE 236 FISHERMAN  
Yamaha 300, only 50 hours  
\$149,500, 908-489-5098

154789

## See Color Photo on the Internet



23' 2018 KEY WEST 239FS, 2018 Yamaha FD250X-CA, 51 hours, \$79,595, 848-232-4292 sales@allpointsmarineservices.com 155492



25' 2009 MONTEREY 254 FS BOWRIDER  
**BRAND NEW** 5.7L Mercruiser 350 MPI engine with 1 year warranty, runs perfect, GPS, canvas, bimini, very roomy, huge swim platform, fresh bottom paint,

**JUST REDUCED!! \$34,900**

**732-267-6822 • cp77@comcast.net**

153789



# JUST BUY IT. And, Enjoy More to Life!

## Let J.J. BEST Provide You Financing & Insurance!



**100% Financing Available, Quick Approvals Very LOW RATES, LONG TERM Programs & No Prepayment Penalties. We offer Insurance too!**

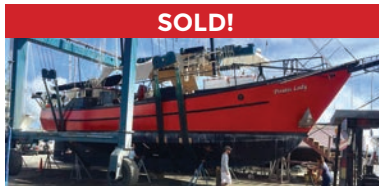
**Get Pre-Qualified NOW at [JJBESTBOATLOANS.COM](http://JJBESTBOATLOANS.COM)**

**OR, CALL NOW 1-800-USA-1965**

Estimated APR based on 5 year loan term; individual rate may vary based on loan amount, loan term, boat use, model year and type of boat. Subject to consumer loan program requirements and credit approval. Rates and terms are subject to change based on market conditions and borrower eligibility. Certain fees, closing costs, and restrictions may apply. APR applied to the loan is the APR in effect on the date your application is received and is valid for 30 days. Minimum loan amount for pleasure use is \$10,000 in all states. J.J. Best Banc & Company is not a bank. J.J. Best Banc & Company operates under the name J.J. Best & Company.



Worldwide Yacht Sales | Yacht Charters | New Yacht Construction



**SOLD!**

72' Trade Rover



**SOLD!**

50' Chris-Craft



**SOLD!**

48' Evans Boats



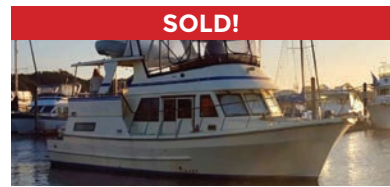
**SOLD!**

44' DeFever



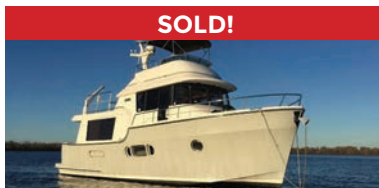
**SOLD!**

44' Gulfstar



**SOLD!**

42' Fu Hwa



**SOLD!**

40' Fathom



**SOLD!**

40' Hinckley



**SOLD!**

36' C&C



**SOLD!**

36' Bristol



**SOLD!**

32' Eagle



**SOLD!**

26' Sisu

List your boat with us and join our **SOLD** list!

To see more details about these and all other yachts around the globe, please visit our website below.

Annapolis, MD • St. Michaels, MD • Delaware City, DE • Deltaville, VA • Woodbridge, VA  
Telephone: 410.919.4900 • Email: [info@curtisstokes.net](mailto:info@curtisstokes.net)

**[www.curtisstokes.net](http://www.curtisstokes.net)**





# WATERFRONT MARINE

#1 GOLL AVE, SOMERS POINT, NJ ~ 609-926-1700

281 PRINCETON AVE, BRICK, NJ ~ "Featuring Chaparral & Carver" 732-202-6961

2822 SOLOMON'S ISLAND RD, EDGEWATER, MD ~ 443-949-9041

Premium Brands ~ Exceptional Service

[WWW.WATERFRONTMARINE.COM](http://WWW.WATERFRONTMARINE.COM)

**INBOUND BOATS AVAILABLE FOR FAST DELIVERY • CALL TODAY FOR DETAILS!**



## - PREOWNED BOATS -



Located in Somers Point  
**2019 Robalo R202 Explorer**  
Yamaha F150, 35 hrs,  
no bottom paint • **\$56,500**



Located in Somers Point  
**2022 Robalo R360 Center Console** • Triple Yamaha F300,  
lift kept • **\$614,900**



Located in Somers Point  
**2021 Robalo R242 Center Console** • T/Yamaha F200,  
trolling motor • **\$135,000**

## 2022 Contender 44 ST



**Factory Demo!**  
**Triple Yamaha 425 XTO's, electronics,**  
**Sea Keeper, loaded w/options &**  
**features, new warranties,**  
**Available for Immediate Delivery!**  
**Call Today for Pricing!**

### BOWRIDERS & PONTOONS

30' '16 Chaparral 307 SSX, T/Volvo 300hp I/O ..... **\$189,000**  
28' '20 Chaparral 280 OSX, T/Yamaha F200, 110 hrs ..... **\$189,900**  
28' '12 Chaparral 284 Sunesta, Volvo Penta 8.1 400 DP ..... **\$73,900**  
27' '18 Crownline 275 SS Bowrider, Merc 8.2 Mag ..... **SOLD**  
26' '17 Crownline E6 XS Bowrider, Yamaha F300 ..... **\$69,000**  
25' '08 Chaparral 250 Signature, 8.1L Volvo, 461 hrs ..... **Pending**  
25' '20 Chaparral 257 SSX, Volvo Penta V8 350 DP ..... **Pending**  
24' '14 Chaparral 246 SSi, Volvo Penta 5.7L 320 DP ..... **SOLD**  
24' '16 Chaparral 243 Vortex VRT Jet Boat ..... **SOLD**  
24' '19 Chaparral 244 Sunesta, Volvo Penta 5.7L 300 DP ..... **SOLD**  
24' '18 Chaparral 244 Sunesta ..... **SOLD**  
23' '08 Cobalt 232 Bowrider, Volvo Penta 300 320DP, trl ..... **\$38,700**  
23' '02 Cobia 236 Coastal Deckboat, Yamaha 200hp OX66 ..... **SOLD**  
23' '12 Sea Pro 239 DLX ..... **SOLD**  
22' '18 Bennington 22 SSRX, Yamaha F150, low hours ..... **\$49,300**  
22' '04 Sea Ray 220 Sundek, Mercruiser 260hp ..... **SOLD**  
21' '18 Chaparral 21 H2O Sport BR, Merc 4.3L MPI 220, trl ..... **\$49,900**  
21' '17 Chaparral 21 H2O OB, Yamaha F150, trailer ..... **SOLD**  
21' '08 Polar 2100 DC, Yamaha F150, trailer ..... **SOLD**  
21' '18 Chaparral 21 H2O Sport, 4.3L Merc MPI 220hp ..... **SOLD**  
20' '17 Regal 2000 ES Bowrider, Volvo Penta, 40 hours ..... **\$44,900**

20' '12 Bentley 200 Cruise Pontoon, Mercury 90hp 4-stroke ..... **SOLD**

### CRUISERS & CUDDY CABINS

33' '12 Chaparral 330 Signature, T/350hp Mags ..... **Pending**  
32' '15 Regal 32 Express, T/Volvo Penta I/O, loaded & clean ..... **\$197,500**  
25' '08 Chaparral 250 Signature, 8.1L Volvo, 461 hrs ..... **Pending**

### FISHING BOATS

36' '22 Robalo R360 CC, Triple Yamaha F300, lift kept ..... **\$614,900**  
27' '19 Robalo R272, T/Yamaha F200, loaded ..... **SOLD**  
24' '21 Robalo R242 CC, T/Yamaha F200, trolling motor ..... **\$135,000**  
24' '18 Robalo R242, Yamaha F300, low hours ..... **SOLD**  
24' '06 Robalo R245 WA Cuddy, T/Yamaha F150 OB ..... **SOLD**  
23' '21 Robalo R230 CC, Yamaha VF 250 w30 hours ..... **SOLD**  
22' '21 Robalo R227, Yamaha F200, rack stored ..... **SOLD**  
22' '17 Tidewater 220 LFX CC, Yamaha F200 ..... **SOLD**  
20' '19 Robalo R202 Explorer, Yamaha F150, 35 hrs, NBP ..... **\$56,500**  
20' '17 Robalo R200ES, Yamaha F150, 127 hrs ..... **SOLD**  
18' '06 McKee Craft 184 CC, Yamaha F115 motor ..... **\$17,900**  
18' '17 Robalo R180, Yamaha F115, t-top, trailer ..... **Pending**



**AUTHORIZED  
PARTS &  
SERVICE**

**MERCURY**  
MerCruiser



**YAMAHA**  
When you want the best

**VOLVO  
PENTA**



**Full Service  
Marina w/Slips &  
Racks Available!**



# BUY NOW & ENJOY YOUR BOAT FOR THE SUMMER!

**OPEN 7 DAYS A WEEK**



**FOUR WINNS**



**KW  
KEY WEST**



**Scout**  
Discover More...



**Great Selection of  
Pontoons In Stock!  
Call for Info!**



**G3 Boats**



**Need a Trailer?  
We Have Them  
In Stock!**

**YAMAHA BUILT TO LAST**

**410.287.8280**

**ANCHOR  
BOATS**  
*North East, Maryland*

[www.AnchorBoat.com](http://www.AnchorBoat.com)

448 MAULDIN AVE | NORTH EAST, MD 21901

**Parts & Service  
General Boat Repairs  
High & Dry Boat Storage**