

Free!



# The Salty Dog<sup>®</sup>



## CHESAPEAKE BAY EDITION

Published Every Other Week • Distributed in Maryland, Delaware, Southern Pennsylvania and Virginia

### POWERBOATS & SAILBOATS ...Including Marine Services



**31' 2004 RINKER FIESTA VEE 312**, T/350hp Volvos, New A/C, upgraded outdrives, fresh water cool, well maintained, good condition! **\$39,900, 703-675-0058, Justmyboat@gmail.com 153052**



**32' 2007 PURSUIT OFFSHORE 305**, T/250hp Merc Verados, 760 hrs, AC/HT, sleeps 4, mico, stove, fridge, full head, live baitwell, ORs, loaded, well maintained, **\$130,000, 732-814-0024, j\_fasano@yahoo.com 152969**



**NEW 2021 29' JEANNEAU NC 895 SPORT**, Twin Yamaha, loaded In Stock! • Call for Price **302-945-2254 • anita@rudymarine.com**



**27' 1993 ALBEMARLE 27SF**, GM 350 Marine, 330 hrs, since new engines, (2) Raymarine 12" displays 1 Lowrance 7", FF, 285 gal gas, AP, AC, micro, tower, outriggers, **\$29,500, 410-829-0311, cl60pilot@msn.com 149912**

**List Your Boat  
As Low As \$49!**

**Go to [www.thesaltydog.com](http://www.thesaltydog.com)  
to get started!**

Private Boat Ads Only



**22' 1990 RHODES**, refurbished 2016 with 2016 galv trailer and Yama OB, Intermast furling main, furling 130 genoa & more, **\$16,500 410-647-2755 jschroll@msn.com 152520**



**2022 28' COBIA 280 CENTER CONSOLE** Twin Yamaha F200hp, \$Call • **302-436-1737 captain\_glen@rt113boatsales.net**



**40' 2001 SEA RAY 400 SEDAN BRIDGE**, 430 Cummins, low hours, loaded with accessories, **\$169,900, 717-626-2680, fmi@dejazzd.com 152352**



**2019 29' JEANNEAU 9.0 LEADER CC** T/250hp Yamaha 4-stroke, 35 hours, trailer, **\$159,995 • 302-945-2254 anita@rudymarine.com**

Annapolis, MD • St. Michaels, MD  
Deltaville, VA • Woodbridge, VA  
Delaware City, DE

**CONTACT US TODAY!**

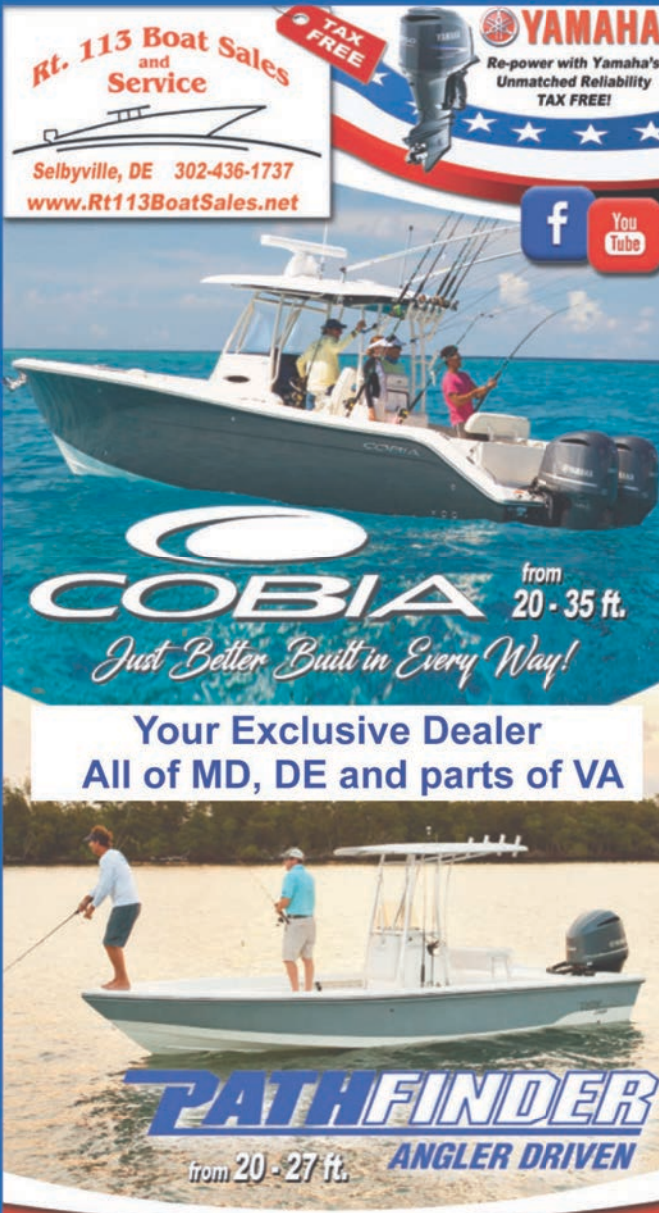
**info@curtisstokes.net  
410.919.4900**

**CURTIS  
STOKES  
& ASSOCIATES**

**[www.curtisstokes.net](http://www.curtisstokes.net)**

**1-888-843-1585 • Private Boat Information on Page 18**





**Rt. 113 Boat Sales and Service**  
Selbyville, DE 302-436-1737  
[www.Rt113BoatSales.net](http://www.Rt113BoatSales.net)

**YAMAHA**  
Re-power with Yamaha's  
Unmatched Reliability  
TAX FREE!

**COBIA** from 20 - 35 ft.  
*Just Better Built in Every Way!*

**PATHFINDER** from 20 - 27 ft. **ANGLER DRIVEN**

**Brokered Boats WANTED!**  
Clean, Late Models up to 35 ft. LOW FEES - GREAT RESULTS!

**GARMIN**  
AUTHORIZED RESELLER  
Certified Installer

**BOAT TRAILERS**  
Wholesale Pricing!

**Tidewater TRAILERS**

**RT113BoatSales.net**

HAUL OUT AND TRANSPORT SERVICES AVAILABLE

**We have Boats Available with  
Special Order Discounts  
of up to \$20,000**

**Call Store for Details  
302-436-1737**

**Say you saw this in the Salty Dog**

**Boats Available with Special Order Discounts  
and Pre-Price Increase\***

Cobia 220 CC powered by a F200 Yamaha

Cobia 262 CC powered by Twin F150 Yamaha

Cobia 280 CC powered by Twin F200 Yamaha

Cobia 280 DC powered by Twin 250NSB Yamaha

Cobia 320 CC powered by Twin XF425 Yamaha

Cobia 330 DC powered by Twin XF425 Yamaha

Cobia 350 CC powered by Triple F300 Yamaha

**\*Get Your New Boat THIS YEAR  
and Beat the Turn of the Year  
Price Increase  
Guaranteed!**

**Now is the Best Time to  
Cash Out.**

**We handle, funding, Payoff, National MLS  
and Transport-Delivery  
to anywhere in the USA**

**Get Your Boat Sold Fast  
and for Top Dollar.**

**Clean late Models, years 2005 and up  
powered with Yamaha Outboard Motors**

**Call 302-436-1737**



# Upper Chesapeake Yacht Sales

**John Curry • (610) 299-3598**

**[www.upperchesapeakeyachtsales.com](http://www.upperchesapeakeyachtsales.com)**



**31' 2013  
Bertram Custom  
Sportfish  
\$395,000**



One of the absolute finest 31' Bertram re-manufactured boats built by renowned Worton Creek Marina. The hull is a 1963 rock solid Bertram that was meticulously restored in 2013 at a cost in excess of \$500,000 and has been kept in a covered shed since completion now having approximately 160 hours on her Yanmar diesels. This is a must see for the discriminating Buyer looking to purchase a great fishing and cruising vessel that may also be considered a maritime "work of art". Boat truly shows as new!



**62' '03 Bruce Roberts  
Expedition Trawler,  
loaded and mint • \$1,399,900**



**56' '04 Carver 56 Voyager PHMY  
T/675hp Volvos, loaded and mint  
\$449,900**



**40' '81 Bristol Sloop,  
diesel, mint, classic,  
\$55,000**



**36' '78/'07 Jarvis Newman FB,  
\$500K refit, 330 Cummins,  
gen, AC, Mint \$134,900**



**37' '95 Sea Ray  
Sundancer, T/7.4L,  
gen, AC • \$64,900**



**34' '04 Rinker  
342 Fiesta Vee, T/280hp  
Volvos, gen, AC, nice  
\$59,900**



**28' '74 Bertram FB,  
newer 315 Inboards, AC,  
clean • \$24,900**



**Reduced!**

**27' '02 Rinker 270 Fiesta  
Vee, new engine & Bravo  
III, trailer available, very  
nice • \$31,900**



**27' '17 Scout 275 Dorado,  
T/200hp Yamahas, loaded,  
trailer, mint • \$169,000**

**22' '95 Sea Ray Weekend, 5.7L Merc, trailer, excellent condition..... \$14,900**  
**15' '06 Key West Center Console, Yamaha 4-stroke, trailer, mint condition..... \$10,900**



**Expect The Same  
Superior Service From Our  
Brokerage That You Get  
From Our Marina**

**BOAT SALES & BROKERAGE  
• Financing & Insurance Available •**

**WORTON CREEK MARINA**

23145 Buck Neck Road • Chestertown, MD 21620

**(410) 778-3282**



## WANT TO SELL YOUR BOAT FAST?

A successful brokerage program starts with exposure. Due to our size, Clarks Landing can offer more exposure than most other brokers.

Our experienced, dedicated team handles the entire transaction, including financing, marketing, demonstration rides, haul outs, estimates & more.

List your boat where it is or at one of our facilities.



2016 Sea Ray  
510 Flybridge  
**New Listing**  
**Low Hours**



2015 Pursuit 385  
Offshore  
**\$334,900**

**IN TODAY'S MARKET, YOUR BOAT WILL NEVER BE WORTH MORE THAN IT IS RIGHT NOW. OUR EXPERIENCED BROKERS WILL SELL YOUR BOAT FOR TOP DOLLAR.**

**Get A Free Market Analysis**

**[www.ClarksLanding.com](http://www.ClarksLanding.com)**

- ✓ Reduced Commissions
- ✓ Free Land Storage Program
- ✓ Huge Marketing Budget
- ✓ Family-Owned over 40 Years
- ✓ **Free Drone Media Package for Listings over \$150K**

## LIMITED INVENTORY!!! Buy Now & Cruise Later!

**Scan QR Codes with Your Phone's Camera for Details & Video Tours**



**CLARKS LANDING**  
YACHT SALES  
**732-899-5559 • [www.ClarksLanding.com](http://www.ClarksLanding.com)**

on the Manasquan River  
847 Arnold Avenue  
Point Pleasant, NJ



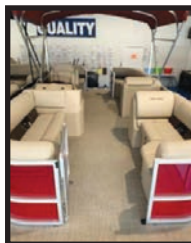
# WE HAVE BOATS, MOTORS & TRAILERS IN STOCK!

*Bentley*



IN STOCK

2022 20' Bentley 20 Cruise  
90hp Yamaha



IN STOCK

2022  
20' Bentley LE  
90hp Yamaha



IN STOCK

2022 22' Bentley Rear Fish  
115hp Yamaha



IN STOCK

2022 Bentley 223 Navigator  
150hp Yamaha

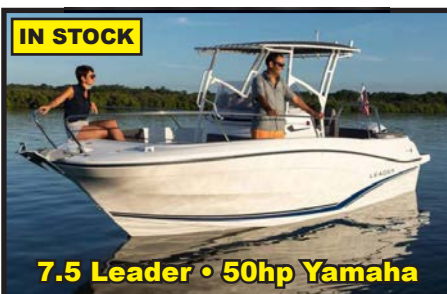


IN STOCK

2022 22' Bentley Rear Lounge  
115hp Yamaha



JEANNEAU



IN STOCK

7.5 Leader • 50hp Yamaha



IN STOCK

2022 Diamante D 23 S  
Yamaha power



IN STOCK

2022 Lago L 22 U  
Yamaha power



3  
IN STOCK

2100 • 150hp • 200hp • 250hp



IN STOCK

2022 Lago L 20 C  
Yamaha power



IN STOCK

2021 22R Triple  
Tube • 150hp



IN STOCK

2021 22R  
115hp Yamaha

ALL BOATS POWERED BY



**YAMAHA**



Delaware has  
**NO SALES TAX!**  
3 GREAT LOCATIONS!



**REPOWER HEADQUARTERS**



302-945-2254 • 32606 DuPont Blvd Dagsboro, DE 19969  
302-999-8735 • 411 S. Maryland Ave. (Rt 4) Wilmington, DE 19804  
443-995-3785 • 3033 Kent Narrows Way South, Suite 3 Grasonville, MD 21638







# YAMAHA

*Revs Your Heart®*



**Beacon Light**  
Marina

825 Bowleys Quarters Rd. | Middle River, MD 21220

**410-335-6200**

[beaconlightmarina.com](http://beaconlightmarina.com) | [sales@beaconlightmarina.com](mailto:sales@beaconlightmarina.com)

**WITH SO MANY WAYS TO HAVE FUN ON A YAMAHA,**  
*It's easy to find yours at Beacon Light Marina*





# ALMARS

**We Are A Full Service, Premier Mercury Outboard Repair Center! Let Our Certified Mercury Technicians Service Your Mercury Motor Needs!**

## LEFTOVER VERADO SALE!

**CALL FREQUENTLY FOR  
UPDATED INVENTORY!**

**MOTORS ARE  
ARRIVING DAILY!**



**225hp  
black • \$14,995**



**250hp  
black • \$15,995**



**300hp  
black • SOLD**



**300hp  
white • \$18,995**



**350hp  
Call for Great Deal!**



**350hp  
Call for Great Deal!**

**We Now  
Offer  
INJECTOR  
SERVICE  
with  
ONE Day  
Turnaround!**



**150  
4-stroke  
Black**



**150 ProXS  
4-stroke  
Black**



**175XL ProXS  
4-stroke  
Black**



**200  
Sea Pro  
Black**



**225XL  
4-stroke  
Black**



**250 XL  
4-stroke  
White**

**100's of Used Cowllings  
In Stock!  
Call for Availability!**

**250XL PRO  
VERADO 15,995  
Only 1 Available**

**REMANUFACTURED OUTBOARD ENGINE SALE!**

90hp - 250hp 2 Year Warranty

**Starting As Low As \$5,495 Call for Details!**

**CALL US  
FOR GREAT  
DEALS ON  
NON-CURRENT  
POWERHEADS!**

Call us for current pricing new current  
and noncurrent outboards  
**NO SALES TAX IN DELAWARE!**

701 Washington St., New Castle, DE

**302-328-8541**

[www.almarsoutboards.net](http://www.almarsoutboards.net)

HOURS: Monday - Friday: 8am - 5pm

CALL FOR GREAT PRICING ON NEW  
& USED MERCURY OUTBOARDS

**NO HIDDEN COSTS**

NOT RESPONSIBLE FOR TYPOGRAPHICAL ERRORS



All prices good  
while supplies last!

Pricing includes all rebates.





Worldwide Yacht Sales | Yacht Charters | New Yacht Construction



**1979 42' Post - \$63,000**  
Ed Pickering - 410.708.0633



**2002 42' Symbol - \$289,000**  
Lars Bergstrom - 910.899.7941



**2017 25' South Shore - \$184,500**  
Curtis Stokes - 410.919.4900

To see more details about these and all other yachts around the globe, please visit our website below.

Annapolis, MD • Rock Hall, MD • St. Michaels, MD • Delaware City, DE  
Deltaville, VA • Woodbridge, VA  
Telephone: 410.919.4900 • Email: [info@curtisstokes.net](mailto:info@curtisstokes.net)

**[www.curtisstokes.net](http://www.curtisstokes.net)**



23 Ultra



24 HFC



Powered by:



**DANNY'S MARINE**  
**(410) 228-0234 • www.dannysmarine.com**  
 Located on US Rt 50 (mile marker 86) • Chateau Drive near Linkwood, MD  
 dannysmarine@comcast.net

Limited Time Offers. Not all models qualify. See Participating Suzuki Marine dealer for details or visit [www.suzukimarine.com](http://www.suzukimarine.com)  
 ©2020 Suzuki Motor of America, Inc.

# CLARKS FLOATS

## PIER & PILE

**443-871-0436 • CLARKSFLOATS@GMAIL.COM**

### CLARKS FLOATS PIER & PILE

- Floating Docks
- Pile Driving
- Re-Decking

MMCLB #390 I



8x16 KAYAK DOCK



8x12 KAYAK ACCESS



**Kayak Floats**  
**Dock Sections • Work Rafts**  
**Swim Platforms • Gang Planks**  
**SS Fasteners • #1 P.T. Lumber**  
**Perma Float Floats**  
**Composite Decking**

**Deale, MD**





# ANNAPOLIS CRUISAIR, INC.

Family Owned & Operated for Over 50 Years

**SALES • SERVICE • INSTALLATION**



**U-LINE**  
U-Line Icemakers  
110/115vAC

We will meet or beat  
any competitive  
price quote for  
these products!



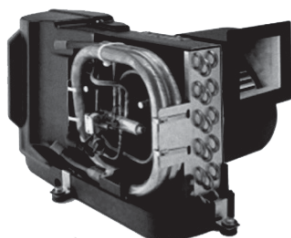
**Espar**

Marine Diesel  
Heaters



**Cruisair®**

New Turbo  
Air Conditioners • Heat Pumps



• We Have • BREATHE EASY AIR FILTERS

**Sentry™**  
*Cruisair*

**BATTERY  
CHARGERS**



SAFEST  
CHARGER  
ON THE  
MARKET!

**Eskimo Ice  
600 Ice Pump**

Provides up to 600 lbs. of fresh  
ice in a day from your ships  
water tank.



**STINKY BOAT?**

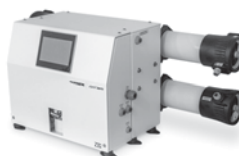
We Have **NEW**  
Breathe Easy  
Air Purifiers



➡ **DOMETIC**

**SPOTZERO®**  
Fresh Water Reverse Osmosis

**Water Purification Systems**



**Vitrifrigo**  
REFRIGERATORS

**WAECO**  
**Adler/Barbour®**



MARINE AIR SYSTEMS®

**AIRRRRRRRRR**  
by Dometic GROUP



**KOHLER.**

- Generators -



**Fischer Panda**

**Onan**

2124 Renard Ct. • Annapolis, MD  
(410) 224-0970 • (410) 974-6136 • Fax (410) 224-0050  
[www.annapoliscruisair.com](http://www.annapoliscruisair.com)





## OWN THE BOAT OF YOUR DREAMS



Become the next “**Just Financed**”.  
Apply online at **JJBEST.COM** or call **800-USA-1965**.

Offering low rates, long terms, and no prepayment penalties.  
Simple application and quick funding.

Looking to refinance? We can help with that too.





UNLIMITED  
TOWING  
MEMBERSHIP  
**\$165\***



**BoatUS.com/Towing**  
**800-395-2628**

## IT'S EASY TO **SWITCH & SAVE**

The competition can't beat our price or our number of tow boats. With 600+ boats in 300+ ports, you're never far from assistance when you need it. **Time to switch to the Red Boats of TowBoatU.S. and save money!**

\*One year Unlimited Saltwater Membership pricing. Details of services provided can be found online at [BoatUS.com/Agree](http://BoatUS.com/Agree).  
TowBoatU.S. is not a rescue service. In an emergency situation, you must contact the Coast Guard or a government agency immediately.



# HEROIC PERFORMANCE

## SERVED IN 4 TANTALIZING FLAVORS

Engineered specifically for severe applications in a marine environment with the capability and durability to accommodate all your boating activities on a wide variety of vessels. The Raptor Series by Indmar offers superior craftsmanship in an exclusive line-up that defies every challenge, especially the test of time.



# 400



404 lb-ft of Torque  
350 Horsepower



# 440



427 lb-ft of Torque  
398 Horsepower



# 460



452 lb-ft of Torque  
410 Horsepower



# 575



580 lb-ft of Torque  
510 Horsepower

ENGINE  
DISTRIBUTORS  
INC. 

**Indmar**  
MARINE ENGINES

800-220-2700 | [www.edi-dist.com](http://www.edi-dist.com)

**RAPTOR**  
Indmar

## ADVERTISERS INDEX

ALMARS.....	7	GEICO.....	14
ANCHOR BOATS.....	24	GOLDSBOROUGH'S MARINE.....	15
ANNAPOLIS CRUISAIR.....	10	GOOTEE'S MARINE.....	15
ATC AUTO/MARINE TRAINING.....	17	HAPPY SKIPPER.....	17
BEACON LIGHT MARINA.....	6	INDEX.....	14
BOAT LIFTS UNLIMITED.....	14	JJ BEST BANC & CO.....	11
BOAT US.....	12	LIST YOUR BOAT.....	18
CLARKS FLOATS.....	9	RT 113 BOAT SALES.....	2
CLARKS LANDING.....	4	RUDY MARINE.....	5
CURTIS STOKES.....	8, 21	UPPER CHESAPEAKE YACHT SALES..	3
DANNY'S MARINE.....	9	US POWERBOAT SHOW.....	22
ENGINE DISTRIBUTORS.....	13	WATERFRONT.....	23

### THE LARGEST LOW PROFILE BOAT LIFT MANUFACTURER IN THE USA

**CALL  
US FOR  
YOUR LOCAL  
DEALER!**



### Choose The Right Boat Lift, Choose

- Low Profile Design • Low Maintenance • 2/5 Yr Warr.
- Outside Walkway • Galvanized Steel Construction
- Aluminum Cradles Available • Capacity 800-40,000 lbs. [www.magnumlift.com](http://www.magnumlift.com)

## MAGNUM

### BOAT LIFTS

Personal Watercraft Lifts

Fully  
Insured

## BOAT LIFTS UNLIMITED

**410-674-3100 • 1-800-268-5911**

**WE SERVICE  
MOST MAKES  
OF BOAT  
LIFTS!**

Located in Odenton, MD, this full-service boat lift manufacturer has a network of over 180 distributors serving the Chesapeake Bay, Great Lakes and Atlantic Coast with Magnum Boat Lifting Products. Boat Lifts Unlimited is dedicated to customer satisfaction through prompt, courteous service on most existing boat lifts and timely installation of new boat lifts. Quality materials, attention to detail and innovative design have made Boat Lifts Unlimited one of the largest boat lift manufacturers in the U.S.



Fishin' Boats From  
Fishin' Folks

# Summer Savings!

PRICED  
TO SELL!



**\$129,900**

## 2004 Grady-White 300 Marlin

Twin 2019 Yamaha  
XTO 425HP  
Includes Trailer

PRICE  
REDUCED



**\$19,995**

## 2002 May-Craft 2550CC

Evinrude  
E225FPZSI  
Includes Trailer



**\$36,995**

## 2018 G3

### Bay 20 DLX

Yamaha VF115LA  
Includes Trailer



**\$17,995**

## 2007 Wellcraft

### 215 Bay

Includes Trailer



**\$29,900**

## 2019 Mako Pro

### 17CC Skiff

Includes Trailer

# GOOTEE'S MARINE

South of Cambridge On Maryland's Eastern Shore  
1439 Hooper's Island Road, Church Creek, Maryland



**800-792-0082**

**Gootees.com**



## GOLDSBOROUGH'S MARINE



"Where Happiness Is Just A Boat Ride Away"



# July Fireworks Specials

[www.crisfield.com/gold](http://www.crisfield.com/gold)



2021 Lowe RX1660 Tiller Jon Pkg  
Yamaha 20hp MLH 4-stroke,  
EZ Loader galv trailer  
LIST PRICE \$10,970

## OUTBOARD MERCURY SALE

2.5HP MH ..... \$699  
4HP MH ..... \$1,375  
25HP ELPT ..... \$2,550

## YAMAHA

2.5HP MH ..... \$999  
15HP MLH ..... \$2,795



2021 18 Lookout Skiff  
Open Tiller Package, Boat Only  
LIST PRICE: \$13,295

## Goldsborough's Marine

709 W. Main St., Crisfield, Maryland  
Ph.# 410-968-0852 • Email: merc71@verizon.net



96RT 17-20 3100  
Galvanized • \$3,695




Trailer Blowout  
Special!



1,700 LBS Galvanized  
Bunk Trailer • \$2,695





**YOUR  
ENJOYMENT  
MADE EASY**

**GEICO**<sup>®</sup>  
FOR YOUR BOAT

Get a GEICO quote for your boat and, in just 15 minutes, you'll know how much you could be saving. If you like what you hear, you can buy your policy right on the spot. Then let us do the rest while you enjoy your free time with peace of mind.

[geico.com/boat](https://geico.com/boat) | 1-800-865-4846

Some discounts, coverages, payment plans, and features are not available in all states, in all GEICO companies, or in all situations. Boat and PWC coverages are underwritten by GEICO Marine Insurance Company. In the state of CA, program provided through Boat Association Insurance Services, license #0H87086. GEICO is a registered service mark of Government Employees Insurance Company, Washington, DC 20076; a Berkshire Hathaway Inc. subsidiary. © 2020 GEICO 20\_206641





**HAPPY SKIPPER**  
Follow Your Compass

We're the New Kids on the Dock!

Fun & Unique Nautical Apparel & Accessories

Motor or Sail - We Have Something for You!

[www.thehappyskipper.com](http://www.thehappyskipper.com)

888-747-1615



**RIDE THE CREST**  
to career success

**ENROLL FOR TRAINING TO BECOME A PROFESSIONAL MARINE SERVICE TECHNICIAN**

Our in-depth program includes training in: Seamanship, AC & DC Electrical, ABYC Standards, Air Conditioning & Refrigeration, Mechanical Systems, Stern Drives/Transmissions, Computerized-Fuel Injected Inboard and Outboard Engines, Inboard, Outboard and I/O Systems, Electronic Diesel Engines (Cummins QSB 5.9 380 HP Common Rail Trainer), Fiberglass & Gelcoat Repair, Plumbing and Sanitation Systems.

Financial Aid for those who Qualify • Career Placement Assistance

**CALL NOW 866-905-4278**  
[www.autotraining.edu](http://www.autotraining.edu)  
900 Johnsville Blvd., Warminster, PA 18974

Supported by **MERCURY** & **HONDA** MARINE  
with Training Materials & Equipment

For required program disclosure information, please go to [www.autotraining.edu/consumerinformation](http://www.autotraining.edu/consumerinformation).



# FREE LISTING WITH PHOTO ON THE INTERNET

## PRIVATE AD RATES

- ☐ INTERNET ONLY UP TO 1 YEAR..... \$39<sup>00</sup>  
☐ 3 ISSUES NO PHOTO CLASSIFIED..... \$49<sup>00</sup>  
☐ 3 ISSUES WITH COLOR PHOTO  
 WITH COLOR PHOTO ON INTERNET..... \$59<sup>00</sup>  
☐ INTERNET FEATURE ADD ON 4 WEEKS  
 AVAILABLE WITH AD PURCHASE ONLY!  
 ON THE SALTY DOG HOME PAGE..... \$49<sup>00</sup>  
☐ FRONT COVER..... \$40<sup>00</sup>  
☐ FACEBOOK FEATURE..... \$15<sup>00</sup>  
☐ PUBLICATION MAILED TO YOU..... \$3<sup>00</sup>

## TOTAL

FRONT COVERS ARE BASED ON AVAILABILITY

- ☐ CHECK    ☐ MONEY ORDER    ☐ DISCOVER  
☐ MASTERCARD    ☐ VISA    ☐ AMERICAN EXPRESS

CC#

Expiration Date \_\_\_\_\_ Security Code \_\_\_\_\_

Advertiser's Name .....

Address .....

Phone .....

Where did you pickup "The Salty Dog"?

Store \_\_\_\_\_ Town \_\_\_\_\_

Fill out the description form below, up to 125 characters (including spaces & punctuation) of advertising. Please put one character per space beginning with the motor. Include a check, money order or credit card, and mail to us with a good quality COLOR photograph of your boat. Photos will only be returned if accompanied by a self-addressed stamped envelope.

## AD COPY

FT. \_\_\_\_\_ YR. \_\_\_\_\_

MANUF. / MODEL \_\_\_\_\_

MOTOR \_\_\_\_\_

ACCESSORIES \_\_\_\_\_

LOCATION OF BOAT \_\_\_\_\_, \_\_\_\_\_ State \_\_\_\_\_ Zip Code \_\_\_\_\_

PRICE \_\_\_\_\_

PHONE # \_\_\_\_\_

EMAIL \_\_\_\_\_

Send to: The Salty Dog  
254 Brick Blvd • Suite 1  
Brick, NJ 08723

**888-843-1585**

Fax (732) 477-9000 • Email: [info@thesaltydog.com](mailto:info@thesaltydog.com)

No refunds after Ad is processed. • Advertiser will be responsible for \$20 fee on returned checks.

**YOUR BOAT LISTING CAN ALSO BE SUBMITTED ON THE INTERNET [www.thesaltydog.com](http://www.thesaltydog.com)**

## SPECIAL FEATURES

PRIVATE BOAT ADS ..... **Pgs. 19-20**

## SUBSCRIPTION CHESAPEAKE BAY

SALTY DOG is published Bi-weekly 25 times a year.

Papers are mailed FIRST CLASS. Your first issue will be mailed within 1 week. To subscribe, just fill in the amount of issues and multiply by \$2.00\*

No. of issues \_\_\_\_\_ x \$2.00\* = Total Cost \_\_\_\_\_

☐ CHECK    ☐ MONEY ORDER    ☐ MASTERCARD    ☐ VISA

Credit Card No. \_\_\_\_\_

Exp. Date \_\_\_\_\_

Signature \_\_\_\_\_

Name \_\_\_\_\_

Address \_\_\_\_\_

City \_\_\_\_\_ State \_\_\_\_\_ Zip \_\_\_\_\_

Telephone \_\_\_\_\_

\*Canada Subscription Add 10% - Bermuda Subscription Add 30%  
Outside the Continental USA Add 50% • Credit Cards Only Outside USA



Mail To: THE SALTY DOG, 254 Brick Blvd • Suite 1, Brick, NJ 08723



A Bi-weekly Publication for  
Powerboats, Sailboats, Marine  
Equipment, Supplies, Services,  
Waterfront and Photo Ads

For More Info on Display Ads or Internet Listings

Call 888-843-1585 • Fax (732) 477-9000

[info@thesaltydog.com](mailto:info@thesaltydog.com) • Mon.- Fri. 9:00 am to 4:00 pm



See Color Photo on the Internet



40' 2006 FORMULA 400 SS, T/Volvo Dsls, many updates, loaded, \$219,000, 609-693-9423 tidesendmarina1@gmail.com 152565

See Color Photo on the Internet



**32' 2006  
SEA RAY 320  
SUNDANCER**  
T/Merc 6.2 320hp  
Bravo III Drives, AC,  
gen, new bellows  
and newer manifolds &  
risers, maintained  
by owner, 396 hours  
**\$119,000**  
**609-709-2159**  
**r.mastro@**  
**comcast.net**

153363

See Color Photo on the Internet



31' 2000 SEA RAY 310 SUNDANCER, T/Merc 5.7L, BIII, gen, windlass, remote spotlight, power vent, ready to cruise! \$59,900 OBO, 917-817-5084 info@deepwaterlanding.com 153035

See Color Photo on the Internet



39' 2017 PURSUIT OS 385 Offshore, Yamaha 300hp, Less than 300 hours on Engines, Warranty on engines until 9/2024, Dual 16' Garmin 7616 w/ night flare/fusion/Flir/Radar, \$475,000, 410-507-5247 chase@yachtbrokersofannapolis.com 152994

See Color Photo on the Internet



**29' 2009 AZURE AZ298**  
beautiful open BR, 16 person capacity, 70 gal fuel tank, Mercruiser 496 MAG HO, BIII, twin prop 425hp, dual battery with switch, GPS, head/shower, luxury lounge seating w/armrests and fold down bathing seating, sink and plenty of storage, 3 underseat coolers with drainage for beverage/fish, bimini top and full top cover and storage cover, 215 hours, BRAND NEW- exhaust manifolds, sea water pump, alternator and starter  
**\$49,700**  
**732-642-3577**  
**cynthia.zulick@**  
**cardinalfinancial.com**

153189

See Color Photo on the Internet



36' 1989 TROJAN 12M CONVERTIBLE, T/671 Ti Detroit Diesel engines, Onan 8kW diesel generator, galley down, \$59,500, 732-899-8010 sales@schraderyachts.com 153259

See Color Photo on the Internet



**32' 2007  
PURSUIT  
OFFSHORE 305,**  
T/250hp Merc Verados,  
760 hrs, AC/HT, sleeps 4,  
micro, stove, fridge, full  
head, live baitwell, ORs,  
loaded, well maintained  
**\$130,000**  
**732-814-0024**  
**j\_fasano@**  
**yahoo.com**

152969

See Color Photo on the Internet



32' 1975 TROJAN FLYBRIDGE, Twin 318 Chryslers, microwave, full kitchen, head, \$5,000, 973-713-3495 153032

See Color Photo on the Internet



28' 1988 BERTRAM FLYBRIDGE, T/Captain's Choice Crusaders, less than 400 hours, 11' beam, new fuel tank, full enclosure, electronics, \$35,995, 908-309-4016 almarina1@gmail.com 152807

See Color Photo on the Internet



31' 2004 RINKER FIESTA 312 VEE,  
Twin 350 Volvos, new AC, upgraded  
outdrives, fresh water cool, well  
maintained, good condition, 45ft slip  
Anchorage Marina Balt. MD selling  
cheap make deal bad & slip,  
**\$33,900 • 703-675-0058**  
**Justmyboat@gmail.com**

153052

See Color Photo on the Internet



**28' 1997 MAXUM 2800 SCR,**  
Mercruiser 7.4L 300hp, 450 hrs,  
Bravo III, SS counter rotating props,  
marine head, water heater, AC, VHF,  
GPS w/FF, 2 burner alcohol/elec stove,  
micro, bimini, mooring cover, camper  
canvas, sleeps 6, 2 shore power lines,  
6 jack stands included  
**\$17,500 • 410-371-6426**  
**rjpscp1948@gmail.com**

153207

## See Color Photo on the Internet



**28' 2000 BOSTON WHALER CONQUEST**, 2015 T/250hp Yamaha 4-strokes, 725 hours, extensive elecs, new Eisenglass, many upgrades, in water, ready to go, 2021 slip ava, 917-817-5084 [info@deepwaterlanding.com](mailto:info@deepwaterlanding.com) 153184

## See Color Photo on the Internet



**28' 2000 BOSTON WHALER CONQUEST**, 2015 T/250hp Yamaha 4-strokes, 725 hrs, extensive elecs, new Eisenglass, many upgrades, in water, ready to go, 2021 slip available w/purchase **732-223-0400** [info@deepcreekcovemarina.com](mailto:info@deepcreekcovemarina.com) 153251

## See Color Photo on the Internet



**26' 2002 COBIA CENTER CONSOLE**, 500 hours w/new \$6K trailer, new canvas, new electronics, turn key, everything works, Call or Text Rob 908-489-5098 152665

## See Color Photo on the Internet



**25' 2015 PARKER 2520 XLD**, Twin Yamaha F200, open back pilothouse, custom rodholders, 4G radar, \$109,000, 732-899-8010 [sales@schraderyachts.com](mailto:sales@schraderyachts.com) 152769

Deadlines for  
Next Issue:

CB - 07.28.2021

NJ - 08.04.2021

\* By midnight

## See Color Photo on the Internet



**25' 2009 NOVURANIA 750 LAUNCH**, Volvo D4-300, RIB tender with 300hp Volvo diesel & Hamilton Jet Drive, over \$13,000 in updates over the past two years, GPS/ SAT Radio **\$37,000** 908-783-1491 [rgilman@nelsonward.com](mailto:rgilman@nelsonward.com) 153183

## See Color Photo on the Internet



**24' 1999 Baja H2X**, Big Block 7.4L MPI, 390 hrs, custom painted ODs, no bottom paint, trailer, runs like new, \$26,900, 610-513-3331 [genebaja@comcast.net](mailto:genebaja@comcast.net) 152978

## See Color Photo on the Internet



**22' 1992 SHAMROCK CENTER CONSOLE**, runs great, gas engine, Call or Text Rob 9,500, 908-489-5098 153252

## See Color Photo on the Internet



**21' 2017 BAYLINER Element F21**, Mercury 150, Exc cond, low miles w/warranty, trailer, 2 Helix depth finders, stereo, 2way radio, splash curtains, helm cover, bottom paint, **\$35,000**, 717-676-5182 [jtorchia@riverrockacademy.net](mailto:jtorchia@riverrockacademy.net) 153258

## See Color Photo on the Internet



**20' 2003 SUGAR SAND CALAIS**, 210hp Sport Jet, runs great, 40 MPH, \$7,295, 908-309-4016 [almarmarine1@gmail.com](mailto:almarmarine1@gmail.com) 152017

## See Color Photo on the Internet



**20' 1994 HUETHER GARVEY**, 90hp Mercury 4-stroke, Garmin GPS/DF, Teleflex Sea Star, 2 batts, baitwell & bilge pump, no trailer, **\$4,000**, 443-521-0609 [rich.7119@yahoo.com](mailto:rich.7119@yahoo.com) 153062

## See Color Photo on the Internet



**14' 2013 LIVINGSTON LV14 CATAMARAN**, Mercury 20hp 4-stroke, electric start, custom cover, **\$7,850**, 732-899-8010 [sales@schraderyachts.com](mailto:sales@schraderyachts.com) 153036

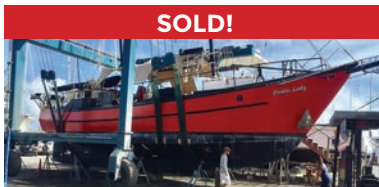
# View Thousands of Used Boats at







Worldwide Yacht Sales | Yacht Charters | New Yacht Construction



**SOLD!**

72' Trade Rover



**SOLD!**

50' Chris-Craft



**SOLD!**

48' Evans Boats



**SOLD!**

44' DeFever



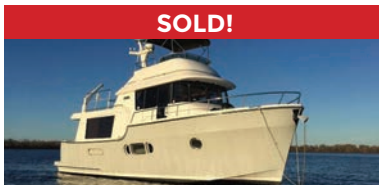
**SOLD!**

44' Gulfstar



**SOLD!**

42' Fu Hwa



**SOLD!**

40' Fathom



**SOLD!**

40' Hinckley



**SOLD!**

36' C&C



**SOLD!**

36' Bristol



**SOLD!**

32' Eagle



**SOLD!**

26' Sisu

**List your boat with us and join our **SOLD** list!**

To see more details about these and all other yachts around the globe, please visit our website below.

Annapolis, MD • St. Michaels, MD • Delaware City, DE • Deltaville, VA • Woodbridge, VA  
Telephone: 410.919.4900 • Email: [info@curtisstokes.net](mailto:info@curtisstokes.net)

**[www.curtisstokes.net](http://www.curtisstokes.net)**

# WELCOME BACK TO ANNAPOLIS



## UNITED STATES POWERBOAT SHOW

OCTOBER 7-10, 2021  
CITY DOCK, ANNAPOLIS, MD



SHOW UPDATES + TICKETS: [AnnapolisBoatShows.com](https://AnnapolisBoatShows.com)







# WATERFRONT MARINE

#1 GOLL AVE, SOMERS POINT, NJ ~ 609-926-1700

281 PRINCETON AVE, BRICK, NJ ~ 732-202-6961  
"Featuring Chaparral & Carver"

2822 SOLOMON'S ISLAND RD, EDGEWATER, MD ~ 443-949-9041

Premium Brands ~ Exceptional Service

[WWW.WATERFRONTMARINE.COM](http://WWW.WATERFRONTMARINE.COM)

## ORDER YOUR BOAT NOW!



### - PREOWNED BOATS -



Located in Somers Point  
2012 Everglades 350 LX Sportfish,  
T/Yamaha F350 OBs • \$239,900



Located in Somers Point  
2020 Robalo R227 DC,  
Yamaha F200XB • \$66,900



Located in Somers Point  
2016 Cypress Cay 230 Sea Breeze Tritoon  
Mercury 150hp 4-stroke • \$39,900

#### BOWRIDERS & PONTOONS

28' '12 Chaparral 287 SSX, 8.2L.....	Pending	31' '16 Sportsman 312 Center Console, T/Yamaha F300.....	SOLD
27' '10 Chaparral 276 SSX, Volvo Penta 8.1L 375 duo prop.....	Pending	30' '17 Robalo R302, T/Yamaha F300 XCA.....	SOLD
24' '11 Chaparral 246 SSI, Volvo Penta 5.7L 300hp DP.....	Pending	30' '17 Robalo R302 CC, T/Yamaha 300hp.....	Incoming
24' '18 Chaparral 2430 VRX.....	Pending	27' '19 Robalo R272, T/Yamaha F200, lift kept, trailer.....	Pending
24' '15 Chaparral 243 Vortex.....	Pending	24' '17 Robalo R247 DC, Yamaha F300.....	\$92,000
23' '04 Yamaha AR230 Jet Boat, w/trailer.....	Pending	24' '18 Robalo R246 Cayman CC, Yamaha F300, trailer.....	\$72,997
23' '07 Monterey 234.....	Pending	24' '18 Robalo 246 Cayman CC, Yamaha F300.....	Pending
22' '11 Chaparral 224 Sunesta.....	Pending	23' '06 Polar 230 WA Cuddy, T/Yamaha F115, trailer.....	\$28,900
22' '06 Sea Ray 220.....	Pending	23' '99 Boston Whaler 23 Outrage, T/'11 Evinrude 150hp E-Tec.....	SOLD
20' '11 Stingray 208 LR.....	Pending	21' '14 Sea Hunt 211 Ultra CC, Yamaha F150.....	\$9,900
20' '07 Cobalt Bowrider.....	Pending	20' '13 Robalo R200, Yamaha F150hp, trailer.....	\$39,900
		20' '19 Robalo R200, Yamaha F150, trailer.....	\$46,000
		20' '03 Sea Fox 205 DC.....	Pending

#### CRUISERS & CUDDY CABINS

38' '06 Cruisers Yachts 385 Motor Yacht.....	Pending	20' '96 Trophy 2002 WA.....	\$8,900
36' '11 Rinker 360 Cruiser.....	Pending	19' '11 Trophy 1903 CC, Merc 150hp.....	\$24,900
33' '06 Chaparral 330 Signature, T/Volvo Penta 5.7 DP.....	\$99,900	19' '17 Yamaha 190 CC, High Output Jet, 70 hours.....	\$31,900
33' '12 Chaparral 330 Signature.....	Pending	18' '17 Robalo R180, t-top, Yamaha F115, trailer.....	\$39,900
24' '03 Chaparral 240 Signature, Volvo Penta 5.0L 260 DA.....	\$25,500	18' '16 Robalo R180, Yamaha F115, trailer.....	\$37,900
23' '88 Chaparral 235XLC, 5.7L Merc.....	\$7,900	17' '17 Boston Whaler 17 Montauk, Merc 90hp 4-stroke.....	SOLD

#### FISHING BOATS



AUTHORIZED  
PARTS &  
SERVICE

**MERCURY**  
MerCruiser

**YAMAHA**  
When you want the best

**VOLVO**  
**PENTA**



Full Service  
Marina w/Slips &  
Racks Available!



# Large Indoor Showroom

**OPEN 7 DAYS A WEEK**

**FOUR WINNS**

**KEY WEST**

**Scout**  
Discover More...

**G3 Boats**  
GATOR TOUGH

**We Have  
Trailers Available!  
Call for Info!**

**YAMAHA** BUILT TO LAST

**410.287.8280**

**ANCHOR**  
**BOATS**  
*North East, Maryland*

[www.AnchorBoat.com](http://www.AnchorBoat.com)

448 MAULDIN AVE | NORTH EAST, MD 21901

**Parts & Service**  
**General Boat Repairs**  
**High & Dry Boat Storage**