

Free!



# The Salty Dog<sup>®</sup>



## CHESAPEAKE BAY EDITION

Published Every Other Week • Distributed in Maryland, Delaware, Southern Pennsylvania and Virginia

### POWERBOATS & SAILBOATS ...Including Marine Services



37' 1997 SEA RAY 370 SUNDANCER, 7.4L MPI Bluewater IB HR671, fully loaded boat has every option offered, autopilot, radar, sonar, Rutter position display, \$69,500, 856-332-4179, Jackie.zellner@gmail.com 151033



25' 2018 GRADY WHITE 257 FISHERMAN, READY TO SELL!!!! T/F150 Yamahas, low hrs, 7/23 warranty, factory options, Garmin GPS radar, Icom 504 radio, outriggers, fish inshore/offshore, family cruising, like new, END OF SEASON SALE! MAKE OFFER! \$119,000, 302-226-3734, Cell 302-218-9325 144975



29' 1999 BAHAMA 299 FISHERMAN, 5.7L, great family and fishing boat with many extras, \$23,000, 732-618-9703, Dap72365@yahoo.com 151264



29'1" 2009 WORLD CAT 29EC, Suzuki DF250s, (2) Raymarine E80 chartplotters, 4kw radar, M280 Xducer, SmartPilotX10, Garmin94sv, Taco 380s CF, 3 axle aluminum trailer incl, \$119,000, 609-892-6656, Heroshimaone@gmail.com 150765

**List Your Boat  
As Low As \$49!**

Go to [www.thesaltydog.com](http://www.thesaltydog.com)  
to get started!

Private Boat Ads Only



2011 MERCURUISER 8.2 MAG HO ECT & BRAVO III X SEACORE, many new parts including risers approx 150 hours on well maintained engine, \$16,000, 267-315-3446, jkillino@killinofirm.com 151143



NEW 35' 2020 JEANNEAU NC 1095  
super loaded, ready for launch,  
Call for Details 302-945-2254  
anita@rudymarine.com



29' 1987 AQUASPORT TOURNAMENT MASTER, T/350hp Mercs, VHF, Raymarine radar/chartplotter, Garmin DF, Bluetooth stereo, new canvas top, brand new cushions, in great shape, turn key, new parts call for more details, \$18,500, 908-461-3372, frankguariglia@aol.com 150781



NEW 2020 SEA FOX 328 COMMANDER  
T/Yamaha 300hp 4-strokes, new, loaded,  
Call for Details 302-945-2254  
anita@rudymarine.com

Annapolis, MD • St. Michaels, MD  
Deltaville, VA • Woodbridge, VA  
Delaware City, DE

**CONTACT US TODAY!**

info@curtisstokes.net  
410.919.4900

**CURTIS  
STOKES**  
& ASSOCIATES

[www.curtisstokes.net](http://www.curtisstokes.net)

**1-888-843-1585 • Private Boat Information on Page 16**





# WATERFRONT MARINE

#1 GOLL AVE, SOMERS POINT, NJ ~ 609-926-1700

281 PRINCETON AVE, BRICK, NJ ~ "Featuring Chaparral & Carver" 732-202-6961

2822 SOLOMON'S ISLAND RD, EDGEWATER, MD ~ 443-949-9041

Premium Brands ~ Exceptional Service

[WWW.WATERFRONTMARINE.COM](http://WWW.WATERFRONTMARINE.COM)



**Robalo R302**



**Robalo R230**



**Chaparral 297 SSX**



**Carver Yacht 34 Coupe**



**Q28**



**250 Suncoast**

## - PREOWNED BOATS -



**Located in Brick**

**35' '02 Sonix 358  
\$44,900**



**Located in Somers Point**

**36' '11 Rinker 360 Cruiser,  
Just Listed, \$124,900**



**Located in Maryland**

**38' '06 Cruisers 385 Motor Yacht,  
T/Volvo Dsls, 584 hours, \$147,900**

### BOWRIDERS & PONTOONS

33' '17 Chaparral 337 SSX, T/Merc 6.2L Axis	SOLD
30' '17 Chaparral 307 SSX, T/300hp Volvo	SOLD
28' '12 Chaparral 284 Sunesta, Volvo Penta 8.1L 400hp	\$64,900
28' '14 Chaparral 284	SOLD
28' '16 Chaparral 284 Sunesta	SOLD
28' '12 Chaparral 287 SSX, 8.2L	Pending
28' '15 Chaparral 287 SSX, Volvo Penta 430hp DP, loaded	Pending
28' '04 Chaparral 280 SSI	SOLD
27' '14 Chaparral 277 SSX, Volvo Penta 380 DP	SOLD
26' '16 Four Winns H260	\$64,900
26' '09 Chaparral 264	SOLD
26' '15 Monterey 264 FS	SOLD
26' '05 Chaparral 260 SSI, Volvo Penta 8.1L 375hp	SOLD
26' '18 Chaparral 264 Sunesta	SOLD
25' '19 Bennington Q Series, 300hp Yamaha	SOLD
25' '06 Cobalt 250	\$34,900
24' '17 Chaparral 246 SSI, Volvo Penta 300hp DP	SOLD
24' '11 Chaparral 244 Sunesta	Pending
24' '19 Chaparral 244 Sunesta	Pending
24' '18 Chaparral 246 SSI	SOLD
24' '18 Chaparral 2430 VRX	\$68,900
24' '15 Chaparral 243 Vortex	\$49,900
23' '00 Chaparral 235 SSI Cuddy, Merc 5.7L EFI	\$12,900

23' '16 Manitou Oasis	SOLD
23' '07 Monterey 234	Pending
22' '14 Bennington 2275 GCW, Yamaha F150, 2018 Load Rite trailer	Pending
22' '19 Monterey M22	SOLD
22' '06 Sea Ray 220	Pending
20' '11 Stingray 208 LR	Pending
20' '07 Cobalt Bowrider	Pending
19' '01 Chaparral 196 SSI	SOLD
19' '01 Chaparral 196 SSI	SOLD
18' '11 Hurricane 188	SOLD

### CRUISERS & CUDDY CABINS

38' '06 Cruisers Yachts 385 Motor Yacht	\$174,900
36' '11 Rinker 360 Cruiser	\$124,900
33' '12 Chaparral 330 Signaure	Pending
23' '88 Chaparral 235XLC, 5.7L Merc	\$7,900

### FISHING BOATS

27' '20 Robalo R272	SOLD
24' '13 Robalo R247 DC	SOLD
20' '13 Robalo R207	SOLD
20' '06 Sea Pro 206 Dual Console, '16 Mercury 150XL 4-stroke, trailer	SOLD
20' '96 Trophy 2002 WA	\$8,900

### PERFORMANCE BOATS

35' '02 Sonic 358	\$44,900
-------------------	----------



**AUTHORIZED  
PARTS &  
SERVICE**

**MERCURY**  
MerCruiser



**YAMAHA**  
When you want the best

**VOLVO  
PENTA**



**Full Service  
Marina w/Slips &  
Racks Available!**



**Rt. 113 Boat Sales and Service**

Selbyville, DE 302-436-1737  
www.Rt113BoatSales.net

**TAX FREE**

**COBIA**  
20 to 35 Feet

**302-436-1737**

**QUALITY IS MORE AFFORDABLE THAN YOU THINK!**



**PATHFINDER**  
ANGLER DRIVEN

**In Stock! 2005 - 2200 - 2600**

**NOBODY Beats My Deals!**



**f** **YouTube**

**Repower**  
**150hp to 425hp**



 <p><b>Cobia 201 CC - \$44,713*</b> F150 Yamaha</p>	 <p><b>Cobia 220 CC - \$53,982*</b> Twin F200 Yamaha</p>	 <p><b>Cobia 237CC - \$69,990*</b> Twin F150 Yamaha's</p>
 <p><b>Cobia 301 CC - IN STOCK!</b> Twin F300 Yamaha's - Digital</p>	 <p><b>Cobia 320CC - INSTOCK!</b> Twin F350 Yamaha's - Digital</p>	 <p><b>Cobia 350 CC - IN STOCK!</b> Triple F300 Yamaha's - Digital GARMIN Command</p>

**BOAT TRAILERS at Wholesale Pricing!**

**GARMIN**  
AUTHORIZED RESSELLER  
Certified Installer

**YAMAHA**

**MASTER YAMAHA TECHNICIAN ON STAFF**  
Repower with Yamaha's Unmatched Reliability...TAX FREE!

\* See store for Options included and details on Pricing



# 4<sup>TH</sup> OF JULY SALE CONTINUED!

## Huge Selection of Pontoons!



2020  
Misty Harbor  
A-1885 CF,  
F-70  
Yamaha



2020  
Misty Harbor  
A-2085 CF,  
F-115  
Yamaha



2020 Misty  
Harbor  
A-2285 CF,  
F-115  
Yamaha



2020 Misty  
Harbor  
A-2085 RU,  
F-115  
Yamaha



2020 Misty Harbor A-2285 RU  
Bullet triple-tube, F-150 Yamaha



2020 Misty Harbor A-2285 CR  
F-115 Yamaha



2020 Misty Harbor B-2285 CEC  
Bar boat, Triple-tube,  
F-250 Yamaha

**Rudy Marine.com**  
*Where Family Boating Begins*

Delaware has  
**NO SALES TAX!**  
**3 GREAT LOCATIONS!**

**YAMAHA**  
**REPOWER HEADQUARTERS**

**302-945-2254 • 32606 DuPont Blvd Dagsboro, DE 19969**  
**302-999-8735 • 411 S. Maryland Ave. (Rt 4) Wilmington, DE 19804**  
**443-995-3785 • 3033 Kent Narrows Way South, Suite 3 Grasonville, MD 21638**



# 4<sup>TH</sup> OF JULY SALE CONTINUED!

## Boats in Stock & Ready To Go



## BLACKFIN

## SEAFOX



Delaware has  
**NO SALES TAX!**  
**3 GREAT LOCATIONS!**



**302-945-2254 • 32606 DuPont Blvd Dagsboro, DE 19969**  
**302-999-8735 • 411 S. Maryland Ave. (Rt 4) Wilmington, DE 19804**  
**443-995-3785 • 3033 Kent Narrows Way South, Suite 3 Grasonville, MD 21638**



# Upper Chesapeake Yacht Sales

**John Curry • (610) 299-3598**  
**[www.upperchesapeakeyachtsales.com](http://www.upperchesapeakeyachtsales.com)**



**42' 2016  
Regal Sport  
Coupe  
\$397,900**



**Fully loaded high end Regal with just 70 hours on Volvo 400hp Diesel motors and IPS drives. Boat was delivered new in April of 2018 which is start of warrantee period. Buy now and be ready for Spring! We own this boat and trades are considered!**



**53' '78 Hatteras Classic MY,**  
8V71TI DD, bow thruster,  
new elects, **\$149,900**



**43' '78 Gulfstar Trawler,**  
Twin Perkins, new genset,  
newer elects, **\$39,900**



**42' '16 Regal 42SC,**  
T/Volvo Dsls with IPS, mint,  
loaded, **\$397,900**

**Trades  
Considered!**



**40' '93 Sea Ray 400 Express,**  
T/454 V-Drives, gen, AC,  
**\$38,500**



**39' '89 Sea Ray 390 Express,**  
T/330hp, gen major upgrades,  
mint, **\$39,900**



**37' '88 Hunter Legend Sloop,**  
great electronics, nice,  
**\$39,900**



**30' '84 Catalina Sloop,**  
diesel, great starter boat,  
**\$11,500**

**Reduced!**



**28' '78 Cape Dory Sloop,**  
diesel, great starter boat,  
**\$13,500**

**Reduced!**



**24' '80 Lyman Sportsman,**  
220hp IB, restored classic, mint,  
trailer included, **\$14,900**



**24' '15 Sea Chaser HFS,**  
300hp Suzuki, alum trl,  
loaded w/elects, mint, **\$54,900**

**31' '69 Chris Craft Commander,** hardtop, 10 hrs on 270hp Crusaders..... **\$19,900**

**31' '13 Bertram Custom SF,** like new, \$200K below replacement..... **\$395,000**

**35' '88 Beneteau Oceanis Sloop,** Volvo Dsl, AC, elec fridge, nice..... **Pending**

**35' '76 Ericson Sloop,** Volvo Diesel, upgrades in process ..... **\$14,900**

**36' '78/07 Jarvis Newman FB Cruiser,** 330hp Cummins, gen, AC, mint **\$139,900**

**39' '89 Sea Ray 390 Express,** T/7.4L, gen, BEST OUT THERE..... **\$39,900**

**41' '00 Sea Ray Sundancer,** T/380 Merc V-Drives, AC, very nice ..... **\$92,500**

**43' '81 Viking FBMY,** rebuilt DD 6-71, new genset, new canvas, Davit ..... **\$59,900**



**Expect The Same  
Superior Service From Our  
Brokerage That You Get  
From Our Marina**

**BOAT SALES & BROKERAGE**  
• *Financing & Insurance Available* •

**WORTON CREEK MARINA**

23145 Buck Neck Road • Chestertown, MD 21620

**(410) 778-3282**



# ALMARS

**We Are A Full Service, Premier Mercury Outboard Repair Center! Let Our Certified Mercury Technicians Service Your Mercury Motor Needs!**

## LEFTOVER VERADO SALE!

**YES!!!!  
WE ARE OPEN  
FOR BUSINESS  
8AM-5PM  
MONDAY-FRIDAY!**



225hp  
black • \$14,995



250hp  
black • \$15,995



300hp  
black • SOLD



300hp  
white • \$18,995



350hp  
Call for Great Deal!



350hp  
Call for Great Deal!

**We Now  
Offer  
INJECTOR  
SERVICE  
with  
ONE Day  
Turnaround!**



150  
4-stroke  
Black



150 ProXS  
4-stroke  
Black



175XL ProXS  
4-stroke  
Black



200  
Sea Pro  
Black



225XL  
4-stroke  
Black



250 XL  
4-stroke  
White

**100's of Used  
Cowlings In Stock!  
Call for Availability!**

**2018 250hp  
XXL Opti  
\$15,995**

**250XL PRO  
VERADO 15,995  
Only 1 Available**

### REMANUFACTURED OUTBOARD ENGINE SALE!

**90hp - 250hp 2 Year Warranty  
Starting As Low As \$5,495 Call for Details!**

**CALL US  
FOR GREAT  
DEALS ON  
NON-CURRENT  
POWERHEADS!**

**Call us for current pricing new current  
and noncurrent outboards  
NO SALES TAX IN DELAWARE!**

**701 Washington St., New Castle, DE**

**302-328-8541  
www.almarsoutboards.net**

**All prices good  
while supplies last!**

**HOURS: Monday - Friday: 8am - 5pm  
CALL FOR GREAT PRICING ON NEW  
& USED MERCURY OUTBOARDS**

**NO HIDDEN COSTS  
NOT RESPONSIBLE FOR TYPOGRAPHICAL ERRORS**



**Pricing includes all rebates.**





**Worldwide Yacht Sales | Yacht Charters | New Yacht Construction**



1981 36' Grand Banks - \$78,500  
Jason Hinsch - 410.507.1259



1978 36' Trojan - \$32,800  
Jason Hinsch - 410.507.1259



1987 36' Marine Trader - \$62,500  
Mary Catherine Ciszewski - 804.815.8238



1998 35' Carver - \$74,500  
David Robinson - 410.310.8855



1995 33' Sea Ray - \$29,000  
David Robinson - 410.310.8855



1980 33' Bertram - \$57,000  
David Robinson - 410.310.8855



2001 30' Pursuit - \$79,900  
David Robinson - 410.310.8855



1995 29' C-Hawk - \$42,500  
Jason Hinsch - 410.507.1259



1993 29' Luhrs - \$47,500  
Mary Catherine Ciszewski - 804.815.8238



2017 25' May-Craft - \$84,500  
David Robinson - 410.310.8855



1952 23' Chris-Craft - \$30,000  
David Robinson - 410.310.8855



1982 19' Custom - \$5,990  
Bill Boos - 410.200.9295

To see more details about these and all other yachts around the globe, please visit our website below.

Annapolis, MD • St. Michaels, MD • Delaware City, DE • Deltaville, VA • Woodbridge, VA  
Telephone: 410.919.4900 • Email: [info@curtisstokes.net](mailto:info@curtisstokes.net)

**[www.curtisstokes.net](http://www.curtisstokes.net)**



New Dealer for:  
**SEA PRO**  
the next wave



208 Bay

**CAROLINA SKIFF**



23 Ultra

**ALUMA** Craft



Powered by:

**SUZUKI**  
MARINE

**SEA CHASER**  
By: Carolina Skiff, Inc.



24 HFC

**DANNY'S MARINE**  
**(410) 228-0234 • www.dannysmarine.com**  
Located on US Rt 50 (mile marker 86) • Chateau Drive near Linkwood, MD  
**dannysmarine@comcast.net**

Limited Time Offers. Not all models qualify. See Participating Suzuki Marine dealer for details or visit [www.suzukimarine.com](http://www.suzukimarine.com)  
©2018 Suzuki Motor of America, Inc.

**MARINE TECHNICIAN TRAINING**

**RIDE THE CREST**  
to career success



ENROLL FOR TRAINING TO BECOME A PROFESSIONAL  
**MARINE SERVICE TECHNICIAN**

Our in-depth program includes training in: Seamanship, AC & DC Electrical, ABYC Standards, Air Conditioning & Refrigeration, Mechanical Systems, Stern Drives/Transmissions, Computerized-Fuel Injected Inboard and Outboard Engines, Inboard, Outboard and I/O Systems, Electronic Diesel Engines (Cummins QSB 5.9 380 HP Common Rail Trainer), Fiberglass & Gelcoat Repair, Plumbing and Sanitation Systems.

Financial Aid for those who Qualify • Career Placement Assistance



CALL NOW

**866-905-4278**

**www.autotraining.edu**

900 Johnsville Blvd., Warminster, PA 18974

Supported by



with Training Materials & Equipment

For required program disclosure information, please go to [www.autotraining.edu/consumerinformation](http://www.autotraining.edu/consumerinformation).



# ANNAPOLIS CRUISAIR, INC.

Family Owned & Operated for Over 50 Years

**SALES • SERVICE • INSTALLATION**



**U-LINE**  
U-Line Ice makers  
110/115vAC

We will meet or beat  
any competitive  
price quote for  
these products!



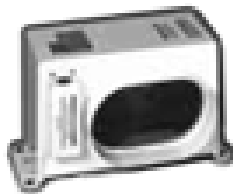
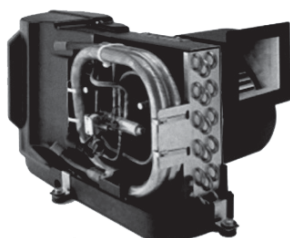
Marine Diesel  
Heaters



**Espar**

**Cruisair®**

New Turbo  
Air Conditioners • Heat Pumps



• We Have • BREATHE EASY AIR FILTERS

**Sentry™**  
*Cruisair*

BATTERY  
CHARGERS



SAFEST  
CHARGER  
ON THE  
MARKET!

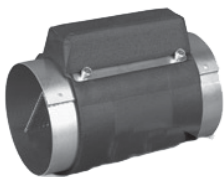
**Eskimo Ice  
600 Ice Pump**

Provides up to 600 lbs. of fresh  
ice in a day from your ships  
water tank.



**STINKY BOAT?**

We Have **NEW**  
Breathe Easy  
Air Purifiers



➔ **DOMETIC**

**SPOTZERO®**  
Fresh Water Reverse Osmosis

**Water Purification Systems**



**Vitrifrigo**  
REFRIGERATORS

**WAECO**  
**Adler/Barbour®**



MARINE AIR SYSTEMS®

**AIRRRRRRRRR**  
by Dometic GROUP



**KOHLER.**

- Generators -

**Onan**




**Fischer Panda**

2124 Renard Ct. • Annapolis, MD

(410) 224-0970 • (410) 974-6136 • Fax (410) 224-0050

[www.annapoliscruisair.com](http://www.annapoliscruisair.com)





**YOUR  
ENJOYMENT  
MADE EASY**

**GEICO<sup>®</sup>**  
FOR YOUR BOAT

Get a GEICO quote for your boat and, in just 15 minutes, you'll know how much you could be saving. If you like what you hear, you can buy your policy right on the spot. Then let us do the rest while you enjoy your free time with peace of mind.

[geico.com/boat](https://geico.com/boat) | 1-800-865-4846

Some discounts, coverages, payment plans, and features are not available in all states, in all GEICO companies, or in all situations. Boat and PWC coverages are underwritten by GEICO Marine Insurance Company. In the state of CA, program provided through Boat Association Insurance Services, license #0H87086. GEICO is a registered service mark of Government Employees Insurance Company, Washington, DC 20076; a Berkshire Hathaway Inc. subsidiary. © 2020 GEICO 20\_206641





# YAMAHA



*Revs Your Heart®*

**Beacon Light**  
Marina

825 Bowleys Quarters Rd. | Middle River, MD 21220

**410-335-6200**

[beaconlightmarina.com](http://beaconlightmarina.com) | [sales@beaconlightmarina.com](mailto:sales@beaconlightmarina.com)

**WITH SO MANY WAYS TO HAVE FUN ON A YAMAHA,**  
*It's easy to find yours at Beacon Light Marina*





# CLARKS FLOATS

## PIER & PILE

**443-871-0436 • CLARKSFLOATS@GMAIL.COM**

### CLARKS FLOATS PIER & PILE

- Floating Docks
- Pile Driving
- Re-Decking

**MMCLB #390 I**



**8x16 KAYAK DOCK**



**8x12 KAYAK ACCESS**

**Any Custom  
Size Float  
Available!**



Kayak Floats  
Dock Sections • Work Rafts  
Swim Platforms • Gang Planks  
SS Fasteners • #1 P.T. Lumber  
Perma Float Floats  
Composite Decking

**Deale, MD**



## Goldsborough's Marine



709 W. Main St., Crisfield, Maryland

Ph.# 410-968-0852 • Email: merc71@verizon.net

**Roughneck**  
by LOWE

"Where Happiness Is Just A Boat Ride Away!"

**Summer BLOWOUT SALE!**

2.5 MH .....	\$999
4 MH .....	\$1,410
9.9 MH .....	\$2,475
9.9 MLH .....	\$2,495
15 MH .....	\$2,845
20 MH .....	\$3,090
20 MLH .....	\$3,095
25 MLH .....	\$3,160



## YAMAHA



**Outboard Sale  
Starting at \$999**



**\$18,990**

**2019 C-Hawk 16FT CC**  
Yamaha 50 ELPT HT 4-stroke  
EZ Loader galv trailer

The Best Ships Store on Delmarva • **Open All Year** • [www.crisfield.com/gold](http://www.crisfield.com/gold)

**Maryland's Oldest C-Hawk Dealership • Maryland's Largest Lowe Boat Dealer**

## ADVERTISERS INDEX

ALMARS.....	7	DANNY'S MARINE.....	9
ANCHOR BOATS.....	24	EGG HARBOR ROPES.....	22
ANNAPOLIS CRUISAIR.....	10	GEICO.....	11
ATC AUTO/MARINE TRAINING.....	9	GOLDSBOROUGH'S MARINE.....	13
BEACON LIGHT MARINA.....	12	GOOD AUTOMATIC WINDLASS.....	22
BOAT DOCTOR.....	22	GRANDE YACHTS.....	21
BOAT LIFTS UNLIMITED.....	14	RT 113 BOAT SALES.....	3
CJAM YACHT SALES.....	15	RUDY MARINE.....	4
CLARKS FLOATS.....	13	RUDY MARINE.....	5
CLARKS LANDING.....	23	UPPER CHESAPEAKE YACHT SALES.....	6
CURTIS STOKES.....	8, 17	WATERFRONT.....	2
CUSTOM REBUILT CARBURETORS.....	22	WEST SHORE YACHT CENTER.....	21

## THE LARGEST LOW PROFILE BOAT LIFT MANUFACTURER IN THE USA

**CALL  
US FOR  
YOUR LOCAL  
DEALER!**



### Choose The Right Boat Lift, Choose

- Low Profile Design • Low Maintenance • 2/5 Yr Warr.
- Outside Walkway • Galvanized Steel Construction
- Aluminum Cradles Available • Capacity 800-40,000 lbs. [www.magnumlift.com](http://www.magnumlift.com)

## MAGNUM

### BOAT LIFTS

Personal Watercraft Lifts

Fully  
Insured

## BOAT LIFTS UNLIMITED

**410-674-3100 • 1-800-268-5911**

**WE SERVICE  
MOST MAKES  
OF BOAT  
LIFTS!**

Located in Odenton, MD, this full-service boat lift manufacturer has a network of over 180 distributors serving the Chesapeake Bay, Great Lakes and Atlantic Coast with Magnum Boat Lifting Products. Boat Lifts Unlimited is dedicated to customer satisfaction through prompt, courteous service on most existing boat lifts and timely installation of new boat lifts. Quality materials, attention to detail and innovative design have made Boat Lifts Unlimited one of the largest boat lift manufacturers in the U.S.





***Full Service Marina • Slips Available  
Call Now for Spring Services!***

**609-927-1175 • [www.CJamYachts.com](http://www.CJamYachts.com)**

**680 Bay Ave • Somers Point, NJ**

***PRE-OWNED SPECIAL!***



**2018 Tiara 39 Open, T/Cummins Dsls, loaded,  
full elects, like new, \$680,000**



**3059 Ocean Heights Ave  
Egg Harbor Twp, NJ 08234**

**Call 609-365-8746**

**Sales • Installation • Service**

***Here for All  
Your Electronic  
Needs!***



# FREE LISTING WITH PHOTO ON THE INTERNET

## PRIVATE AD RATES

- ☐ 3 ISSUES NO PHOTO CLASSIFIED..... \$39<sup>00</sup>
- ☐ 3 ISSUES WITH COLOR PHOTO  
WITH COLOR PHOTO ON INTERNET..... \$59<sup>00</sup>
- ☐ INTERNET FEATURE ADD ON 4 WEEKS  
**AVAILABLE WITH AD PURCHASE ONLY!**  
ON THE SALTY DOG HOME PAGE..... \$49<sup>00</sup>
- ☐ FRONT COVER..... \$40<sup>00</sup>
- ☐ PUBLICATION MAILED TO YOU..... \$2<sup>00</sup>

## TOTAL

FRONT COVERS ARE BASED ON AVAILABILITY

- ☐ CHECK ☐ MONEY ORDER ☐ DISCOVER  
☐ MASTERCARD ☐ VISA ☐ AMERICAN EXPRESS

CC#

Expiration Date \_\_\_\_\_ Security Code \_\_\_\_\_

Signature \_\_\_\_\_

Advertiser's Name .....

Address .....

Phone .....

Where did you pickup "The Salty Dog"?

Store \_\_\_\_\_ Town \_\_\_\_\_

Fill out the description form below, **up to 125 characters (including spaces & punctuation) of advertising**. Please put one character per space beginning with the motor. Include a check, money order or credit card, and mail to us with a good quality COLOR photograph of your boat. Photos will only be returned if accompanied by a self-addressed stamped envelope.

## AD COPY

FT. \_\_\_\_\_ YR. \_\_\_\_\_

MANUF. / MODEL \_\_\_\_\_

MOTOR \_\_\_\_\_

ACCESSORIES \_\_\_\_\_

LOCATION OF BOAT \_\_\_\_\_, \_\_\_\_\_  
City State Zip Code

PRICE \_\_\_\_\_

PHONE # \_\_\_\_\_

EMAIL \_\_\_\_\_

**Send to: The Salty Dog  
254 Brick Blvd • Suite 1  
Brick, NJ 08723**

**888-843-1585**

Fax (732) 477-9000 • Email: [info@thesaltydog.com](mailto:info@thesaltydog.com)

No refunds after Ad is processed. • Advertiser will be responsible for \$20 fee on returned checks.

**YOUR BOAT LISTING CAN ALSO BE SUBMITTED ON THE INTERNET [www.thesaltydog.com](http://www.thesaltydog.com)**

## SPECIAL FEATURES

PRIVATE BOAT ADS ..... Pgs. 18-21

SAILBOATS ..... Pg. 21

## SUBSCRIPTION CHESAPEAKE BAY

SALTY DOG is published Bi-weekly 25 times a year.

Papers are mailed **FIRST CLASS**. Your first issue will be mailed within 1 week.

To subscribe, just fill in the amount of issues and multiply by \$2.00\*

No. of issues \_\_\_\_\_ x \$2.00\* = Total Cost \_\_\_\_\_

☐ CHECK ☐ MONEY ORDER ☐ MASTERCARD ☐ VISA

Credit Card No. \_\_\_\_\_

Exp. Date \_\_\_\_\_

Signature \_\_\_\_\_

Name \_\_\_\_\_

Address \_\_\_\_\_

City \_\_\_\_\_ State \_\_\_\_\_ Zip \_\_\_\_\_

Telephone \_\_\_\_\_

\*Canada Subscription Add 10% - Bermuda Subscription Add 30%  
Outside the Continental USA Add 50% • Credit Cards Only Outside USA



Mail To: THE SALTY DOG, 254 Brick Blvd • Suite 1, Brick, NJ 08723



A Bi-weekly Publication for  
Powerboats, Sailboats, Marine  
Equipment, Supplies, Services,  
Waterfront and Photo Ads

For More Info on Display Ads or Internet Listings

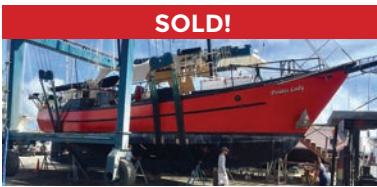
Call 888-843-1585 • Fax (732) 477-9000

[info@thesaltydog.com](mailto:info@thesaltydog.com) • Mon.- Fri. 9:00 am to 4:00 pm





Worldwide Yacht Sales | Yacht Charters | New Yacht Construction



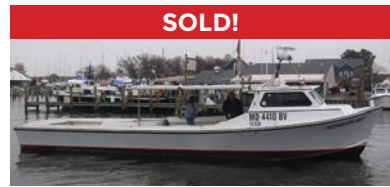
**SOLD!**

72' Trade Rover



**SOLD!**

50' Chris-Craft



**SOLD!**

48' Evans Boats



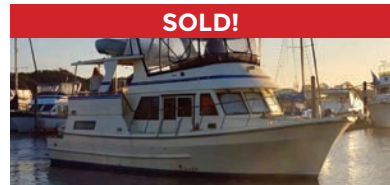
**SOLD!**

44' DeFever



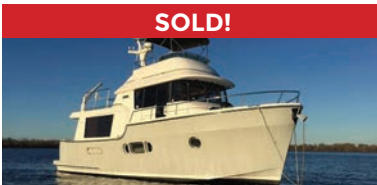
**SOLD!**

44' Gulfstar



**SOLD!**

42' Fu Hwa



**SOLD!**

40' Fathom



**SOLD!**

40' Hinckley



**SOLD!**

36' C&C



**SOLD!**

36' Bristol



**SOLD!**

32' Eagle



**SOLD!**

26' Sisu

**List your boat with us and join our **SOLD** list!**

To see more details about these and all other yachts around the globe, please visit our website below.

Annapolis, MD • St. Michaels, MD • Delaware City, DE • Deltaville, VA • Woodbridge, VA  
Telephone: 410.919.4900 • Email: [info@curtisstokes.net](mailto:info@curtisstokes.net)

**[www.curtisstokes.net](http://www.curtisstokes.net)**



**See Color Photo on the Internet**

**44' 1998 OTHER INSLEY DEADRISE**, 450 Cummins, 1 of 8 built. Upgraded electronics/radar, wash down, center berth head, 450 Cummins diamond series just recently fully serviced, \$66,500, 410-829-1715 Fox071002@gmail.com 151062

**See Color Photo on the Internet**

**38' 2006 FORMULA 382 FASTEC**, T/Merc 525 EFI's, ITS extension boxes, custom graphics, custom trailer, \$131,995, 732-840-1100 sales@brennanboat.com 148280

**See Color Photo on the Internet**

**34' 2011 PURSUIT 345 OS**, Twin 250hp Yamahas, radar, autopilot, gen, AC/HT, ready to fish, \$239,995, 732-840-1100 sales@brennanboat.com 149753

**42' 1975 GRAND BANKS  
ALL FIBERGLASS CLASSIC,**

(2) 135hp John Deere, 8kw Westerbeke diesel gen, all fiberglass, radar, depth recorder, stereo, new bimini top, on land, bottom painted

**\$65,000 • 443-534-924  
annapolis\_outboard  
@yahoo.com**

**See Color Photo on the Internet**

**37' 1997 SEA RAY  
370 SUNDANCER,**  
7.4L MPI Blue Water Inboard HR 671, Black & Gold Edition, fully loaded boat has every option offered, autopilot, radar, sonar, rutter position display,  
**\$69,500  
856-332-4179  
Jackie.zellner@gmail.com**

151033

**See Color Photo on the Internet**

**31' 2012 SEA RAY 310 SUNDANCER**, T/5.0L Mercs, 345 hours, gen, loaded, \$114,900, 732-267-2283 info@hoffmansmarina.com 149755

**See Color Photo on the Internet**

**42' 2019 BUDDY DAVIS 42 CC**, Triple 425hp Yamaha Seakeeper, loaded, ready to fish, Call for Leftover Price, 609-368-1141 stoneharboryachts@gmail.com 150995

**See Color Photo on the Internet**

**31' 2007 REGAL 3060 Windows Express**, Volvo Penta 5.0, Looks new. 1 owner, low hrs. stored inside, many extras. \$62,000, 717-515-0168 watercruiser@comcast.net 150217

**See Color Photo on the Internet**

**39' 2018 TIARA 39 OPEN**, T/Cummins Dsls, loaded, full electronics, like new, \$680,000, 609-927-1175 amury@cjamaryachtsales.com 150797

**See Color Photo on the Internet**

**36' 2002  
SEA RAY 340,**  
8.1 Horizons,  
198 low hrs,  
excellent condition,  
fully equipped,  
offered at over \$10K  
below book value,  
in water  
**\$69,000  
410-409-1369  
tmlaujr@gmail.com**

151309

**See Color Photo on the Internet**

**31' 1980 BERTRAM FLYBRIDGE**, T/6-cyl Cummin Dsls, custom windows, reasonable offers accepted, **JUST REDUCED! \$55,000 OBO**, 908-309-4016 almarine1@gmail.com 148434

**See Color Photo on the Internet**

**39' 1999 CARVER BOATS 356**, Dual 454 fuel injected, GPS, fridge, gen, AC, kept on boat lift, \$70,000, 301-752-0397 150621

**See Color Photo on the Internet**

**31' 1966 BERTRAM SPORT CRUISER**, 454 FWC Crusaders, tuna tower, quality electronics, many extras, owner retiring after 41 years, \$18,000, 302-645-2431, Cell 717-872-5406, vjkeagy@verizon.net 149558

**39' 1964 OWENS  
CABIN CRUISER,**  
Chrysler, Boat kept under shed it's entire life, good condition, engines need work but would be a great liveaboard  
**\$3,000  
804-529-6851  
krentz2@verizon.net**

**See Color Photo on the Internet**

**30' 1973 PACEMAKER Sport fish**, (2) 310 Marine Power FWC, 750 hours, runs good, \$8,000, 443-602-0003 Bunnyboat@verizon.net 150829



## See Color Photo on the Internet



**29' 2009 WORLD CAT 29EC, SUZUKI DF 250, 2009**  
WC 29EC w/DF250's, 2 Raymarine E80 Chartplotters,  
4kw Radar, M280Xducer, SmartPilotX10, Garmin94sv,  
Taco 380's CF, 3 Axle Aluminum Trailer Included,  
\$119,000, 609-892-6656 Heroshimaone@gmail.  
com 150765

## See Color Photo on the Internet



**29' 2003 SEA RAY Amberjack, 2 Mercruiser 350**  
hp 5.7L motors. Hrs 350. Great cruising or fishing.  
Lift kept. Well maintained, \$45,000, 301-481-5017  
drurylm@yahoo.com 151195

## See Color Photo on the Internet



**28' 1995 MAKO CENTER CONSOLE, complete**  
restoration, over \$100k invested, only 150 hours on  
repower, \$84,900, 908-489-5098 151123

## See Color Photo on the Internet



**28' 2003 GRADY-WHITE 283 RELEASE, Dual Yamaha**  
F225hp OBs, Vantage T/A galv trailer, appeox 1100 hrs,  
radar, GPS, echo finder, CP/FF, VHF, t-top, \$59,900, 732-  
929-1711 Tom@hobbylobbymarine.com 147078

## See Color Photo on the Internet



**28' 2002 TRITON 2895 CC, Yamaha 4-stroke,**  
\$39,500, 908-489-5098 151040

## See Color Photo on the Internet



**28' 2009 SEA RAY Sundeck 280,**  
MerCruiser 350 MAG w/Bravo III,  
172 hours, trailer is included,  
lots of extras, water ready boat.

**\$26,500**  
337-900-8913  
jmclle100@gmail.com 150782

## See Color Photo on the Internet



**27' 2016 WORLD CAT 2780 GLACIER BAY EDITION,**  
hardtop, T/150hp Yamaha 4-stroke, full electronics,  
\$149,900, 732-899-8010 sales@schradyachts.  
com 150894

## See Color Photo on the Internet



**27' 2016 CHRIS CRAFT LAUNCH, Mercruiser 8.1L**  
with low hours, Yacht Club Edition, \$119,900, 732-899-  
8010 sales@schradyachts.com 151230

## See Color Photo on the Internet



**27' 1998 GRADY-WHITE 272 SAILFISH, Dual 1998 Mercury 225hp**  
Optimax OBs, hardtop w/encl, electric head, battery charger, livewell,  
salt water washdown, GPS/map/sounder, stereo, windlass, \$29,900,  
732-929-1711 Tom@hobbylobbymarine.com 146726

## See Color Photo on the Internet



**26' 2003 HYDRA-SPORTS 2600 VECTOR, excellent**  
condition, ready to sell, \$34,950 OBO, 908-489-  
5098 151127

## See Color Photo on the Internet



**26' 1992 FORMULA 26PC, trailer - 850 hours (1)**  
454 cu Mercruiser - new lower Bravo 3 unit OEM,  
new gimbal housing assembly OEM, manifolds and  
risers, entire Coosa transom, hv oil pump & pan. See  
internet ad for complete details, \$25,000, 302-249-  
9745 paddwheel@comcast.net 150891

## See Color Photo on the Internet



**26' 1983 SHAMROCK PILOTHOUSE, repowered in 2016,**  
Yamaha 230hp Dsl, 700 hrs, ORs, dual anchors, SWWD,  
navigation lights, \$16,900, 908-489-5098 147989

## See Color Photo on the Internet



**25' 2017 Parker Boats 2520 XLD,**  
Twin F200 XCA, 25 Hours, Bow  
Thruster, Twin 200s, Pwr Steer,  
2nd steerstation, Auto tabs,  
Top of line Raymarine electronics.

**\$120,000**  
610-248-5089  
mpasquarelli@msn.com

148053

## See Color Photo on the Internet



**25' 2018 GRADY-WHITE 257 FISHERMAN,**  
REDUCED TO SELL!!!! T/F150  
Yamahas, low hrs, 7/23 warr, factory  
options, Garmin GPS radar, Icom 504  
radio, outriggers, fish inshore/offshore,  
family cruising, water skiing, like new,  
END OF SEASON SPECIAL!  
**BRING OFFER! \$119,000**  
Call 302-226-3734 or 302-218-9325

144975



## See Color Photo on the Internet



25' 2002 PARKER 2520 MV SPORT CABIN, New Yamaha 300hp (2015), \$49,900, 732-899-8010 sales@schraderyachts.com 151231

**22' 2015 SWEETWATER PONTON,**  
115hp Yamaha, less than 100 hours, bimini, full cover and seat covers, GPS  
**\$22,500**  
**410-778-2228**

## See Color Photo on the Internet



20' 1995 May-Craft, new Yamaha, \$14,950, 908-489-5098 151124

## See Color Photo on the Internet



24' 1998 SHAMROCK 246 CC, 350 Chevy, low hours, runs great, trailer, new Furuno GP1971F FF/1kw transducer, outriggers, \$16,900, 732-865-5170 kneri7106@gmail.com 150896

## See Color Photo on the Internet



22' 1992 SHAMROCK CENTER CONSOLE, runs great, gas engine, \$9,500, 908-489-5098 151035

## See Color Photo on the Internet



**20' 2007 MALIBU Wakesetter VTX,**  
Indmar Monsoon,  
Trailer included  
**\$12,000**  
**678-753-8906**  
**hbh250250**  
**@gmail.com**

150632

## See Color Photo on the Internet



23' 2016 PARKER 2300 SPECIAL EDITION, 200hp Yamaha 4-stroke, electronics, trailer, \$45,500, 732-899-8010 sales@schraderyachts.com 150895

## See Color Photo on the Internet



21' 2018 SPORTSMAN 212 OPEN, w/Offshore package, upgraded 200hp Yamaha, trailer, hardtop, GPS/plotter, FF, only 27.5 hrs, extended warranties!, \$59,995, 732-840-1100 sales@brennanboat.com 150795

## See Color Photo on the Internet



23' 2002 TROPHY 2352 WA, 5.7L Merc I/O, marine head, baitwell, 2004 Tidewater tandem trailer, \$14,900, 908-309-4016 almarmarine1@gmail.com 150630

## See Color Photo on the Internet



21' 2019 KENCRAFT CC CHALLENGER OUTER BANKS, Yamaha F-200 XB 4-stroke, \$55,000, 732-929-1711 Tom@hobbylobbymarine.com 140921

## See Color Photo on the Internet



23' 1994 RINKER 236 Captiva Cuddy Fun and Fast, 1997 Mercruiser 454 MAG MPI (385hp) and 2010 Karavan dual axle bunk trailer., \$10,500, 202-255-6474 rcbv227@gmail.com 150887

## See Color Photo on the Internet



21' 2017 BAYLINER 210, detailed and serviced, only 30 hours on boat and 150 Mercury outboard, Karavan bunk trailer, covers included, \$29,990, 856-298-3708 jimcollins55@hotmail.com 150166

## See Color Photo on the Internet



19' 1994 PURSUIT CC, boat, motor & trailer package, new electronics upgraded this year, new engine in '15, invested 17K, 90 hours, \$18,500, 908-489-5098 151125

## See Color Photo on the Internet



22' 2004 COBALT 226 BOWRIDER, 300hp Mercruiser 350 Mag, Bili, only 168 hours, bimini, excellent condition, \$25,000, 732-899-8010 sales@schraderyachts.com 150893

## See Color Photo on the Internet



20' 2007 SEA DOO SPEEDSTER, T/215hp, serviced yearly, trailer, nice shape, \$15,500, 609-693-9423 tidesendmarina1@gmail.com 148278

## See Color Photo on the Internet



18' 1989 BOSTON WHALER OUTRAGE II, new Yamaha, good shape and runs well, PRICE REDUCED!, \$9,500, 908-489-5098 151039



CALL NOW  
410-686-6998



**WEST SHORE**  
YACHT CENTER  
ESSEX, MARYLAND


TROPICAL  
POOL


BEST LIFT  
SLIPS ON  
THE BAY

**GET YOUR LIFT AT**  
**WEST SHORE YACHT CENTER**

LIFT SLIPS AVAILABLE FOR BOATS UP TO 20,000LBS  
3 MILES TO THE BAY WITH **NO SPEED LIMIT!**

CLIMATE  
CONTROLLED  
BATHROOMS  
AND SHOWERS

Call Today to Reserve Your Slip • 410-686-6998  
1100 E. Riverside Ave, Essex, MD 21221

**VENTURE**  
TRAILER SALE

**Buy At Our Cost**  
**Over 25 Trailers**  
**In Stock**

**MUST  
GO!**

We are overstocked with new trailers  
sizes from 22' to 26'

All aluminum with galvanized wheels!



**GRANDE YACHTS**  
INTERNATIONAL

Grasonville, MD

410-286-1350

See Color Photo on the Internet



**2011 MERCUISER 8.2MAG  
HO ECT & BIII X Seacore,**  
many new parts including  
risers, approx 150 hours on  
well maintained engine!  
**\$16,000**  
**267-315-3446**  
**jkillino@killinofirm.com**

151143

**TOHATSU 150HP  
BFT 4-STROKE,**  
control and cables,  
tack & harness, key  
switch, water separator,  
aluminum prop  
**\$13,600**  
**908-309-4016**  
**almarmarine1**  
**@gmail.com**

See Color Photo on the Internet



**38' 1989 ISLAND PACKET,** Yanmar 44hp diesel, 338  
hours, one owner boat, lightly used, **\$112,500, 732-  
899-8010 sales@schraderyachts.com 144832**

See Color Photo on the Internet



**36' 1968 TRI-MAR Trimaran,** 3 cylinder Volvo, all teak wood,  
Galley, head, sleeps 8-10, all sails, cushions, anchor, plenty of  
storage. Drafts 3 feet, 2 steering wheels, very comfortable sailing  
boat, **\$16,000, 609-694-1731 lakefrontview@exede.net140938**

See Color Photo on the Internet



**35' 1978 BRISTOL 35.5 RACER/CRUISER,** center  
board sloop, 40hp Westerbeke FWC, **\$24,900, 732-  
899-8010 sales@schraderyachts.com 148001**

See Color Photo on the Internet



**32' 1986 SABRE 32 CRUISER/RACER,** Westerbeke  
21hp diesel, 3 separate cabins, sleeps 8, Navy Blue  
hull, **\$26,000, 732-899-8010 sales@schraderyachts.  
com 148276**

See Color Photo on the Internet



**25' 1974 MACGREGOR  
SAILBOAT,**  
9.9 Johnson Extended shaft,  
excellent condition, comes with  
mast, main and jib sails,  
retractable keel, outboard motor,  
complete with trailer. Selling due  
to owners health  
**\$4,750 OBO**  
**410-335-6813**  
**rgconant@gmail.com**

150442



732-691-1216 www.DRBMarineLLC.com



**MARINE MAT**  
Marine Decking Solutions

### Salty Dog Chesapeake Bay Edition Distribution Locations

We have over **900** distribution locations including West Marine, Boaters World and Boat US Marine Supply Stores in MD-VA-DE-PA and DC.

If you can't find "The Salty Dog" publication in these supply stores, call us toll free. 1-888-843-1585

If you know of a Marina/Store that would like to distribute "The Salty Dog" please call us or fill out the form below and mail or fax to 732-477-9000.

Name of Store \_\_\_\_\_

Contact Name \_\_\_\_\_

Address \_\_\_\_\_

City \_\_\_\_\_ State \_\_\_\_\_ Zip \_\_\_\_\_



254 Brick Blvd • Suite 1, Brick, NJ 08723

**Toll Free 1-888-843-1585****Fax 732-477-9000**

### BOAT DOCTOR

**Inboard/Outboard  
Repairs!**

**Call About Winterizing  
& Shrinkwrap**

**Fast Quality  
Service**

**25 Years  
Experience**

**240-528-1154**

3410 Leonardtown Rd  
Waldorf, MD 20601

### Get it Up®

and down automatically with a  
**Good® Automatic Windlass**

Automatic Free-Drop  
Rope/Chain Anchoring Systems

**800-780-4655**

**Sales, Installation, & Service**  
Barnegat, NJ

[www.goodwindlass.com](http://www.goodwindlass.com)

### Save \$\$\$

**Anchor lines 100' to 1800'  
Rope/chain windlass lines**

**Dock lines 15' to 50'**

**(856) 547-5108**

*Made in USA by Egg Harbor Rope*

5105 White Horse Pike (at MM#38)  
Egg Harbor, NJ 08215-0294

# SAY YOU SAW IT IN THE SALTY DOG

## DOMINION YACHT SALES

**Seeking Self-Motivated Yacht Brokers**

If you enjoy spending time on the water, meeting successful new people,  
making \$\$\$\$ while having fun...

**1-888-314-5509 or [robert@dominionyachts.com](mailto:robert@dominionyachts.com)**



# CLARKS LANDING

## YACHT SALES



**2018 Cruisers  
Yachts Cantius**  
**\$1,789,450**

**2015 Pursuit 385  
Offshore**  
**\$334,900**

**2017 Monterey  
378 SE**  
**\$259,995**

**2008 Grady White  
Canyon 336**  
**\$127,900**

**WE SPEED UP THE SALE BY  
TAKING A TRADE ON YOUR  
BOAT. CONTACT CLARKS FOR  
A HASSLE-FREE EXPERIENCE.**

“I was extremely impressed with the professionalism of the Clarks Landing NJ sales team. I was able to find the boat I was looking for and at a great deal! Even after the closing of my new boat, I was happy to have the staff at Clarks Landing list my other boat. They sold my boat in one week! I will only use Clarks Landing for any future boat sales or purchases.”  
- David, Clarks Landing Yacht Sales Customer

# WANT TO SELL YOUR BOAT FAST

A successful brokerage program starts with exposure. Due to our size, Clarks Landing can offer more exposure than most other brokers.

Our experienced, dedicated team handles the entire transaction, including financing, marketing, demonstration rides, haul outs, estimates & more.

List your boat where it is or at one of our facilities.

- ✓ **Free Land Storage Program**
- ✓ **In-Water Slips for Yachts**
- ✓ **Huge Marketing Budget**
- ✓ **Free Market Analysis**
- ✓ **We Take Trades**  
(Most Other Brokers Don't)
- ✓ **Family-Owned over 40 Years**

**DISCOVER THE CLARKS  
LANDING DIFFERENCE**

### ANNAPOLIS AREA

1442 Ford Road, Shady Side, MD 20764  
(410) 867-9550  
boatinfmd@clarkslanding.com

### JERSEY SHORE

847 Arnold Avenue, Point Pleasant, NJ 08742  
(732) 899-5559  
boatinfonj@clarkslanding.com

**WWW.CLARKSLANDING.COM**

Authorized dealer for



# WE HAVE BOATS!



## 2021 Models Arriving Daily!



**YAMAHA** BUILT TO LAST



**410.287.8280**

[www.AnchorBoat.com](http://www.AnchorBoat.com)

448 MAULDIN AVE | NORTH EAST, MD 21901



**Parts & Service**  
**General Boat Repairs**  
**High & Dry Boat Storage**