

Free!



The

Salty Dog[®]



CHESAPEAKE BAY EDITION

Published Every Other Week • Distributed in Maryland, Delaware, Southern Pennsylvania and Virginia

POWERBOATS & SAILBOATS ...Including Marine Services



31' 2004 RINKER FIESTA VEE 312, T/350hp Volvos, New A/C, upgraded outdrives, fresh water cool, well maintained, good condition! **\$39,900, 703-675-0058, Justmyboat@gmail.com 153052**



32' 2007 PURSUIT OFFSHORE 305, T/250hp Merc Verados, 760 hrs, AC/HT, sleeps 4, mico, stove, fridge, full head, live baitwell, ORs, loaded, well maintained, **\$130,000, 732-814-0024, j_fasano@yahoo.com 152969**



NEW 2021 29' JEANNEAU NC 895 SPORT, Twin Yamaha, loaded In Stock! • Call for Price **302-945-2254 • anita@rudymarine.com**



27' 1993 ALBEMARLE 27SF, GM 350 Marine, 330 hrs, since new engines, (2) Raymarine 12" displays 1 Lowrance 7", FF, 285 gal gas, AP, AC, micro, tower, outriggers, **\$29,500, 410-829-0311, cl60pilot@msn.com 149912**

**List Your Boat
As Low As \$49!**

Go to **www.thesaltydog.com**
to get started!

Private Boat Ads Only



22' 1990 RHODES, refurbished 2016 with 2016 galv trailer and Yamaha OB, Intermax furling main, furling 130 genoa & more, **\$16,500 410-647-2755 jschroll@msn.com 152520**



2022 28' COBIA 280 CENTER CONSOLE Twin Yamaha F200hp, \$Call • **302-436-1737 captain_glen@rt113boatsales.net**



40' 2001 SEA RAY 400 SEDAN BRIDGE, 430 Cummins, low hours, loaded with accessories, **\$169,900, 717-626-2680, fmi@dejazzd.com 152352**



NEW 2020 SEA FOX 328 COMMANDER 1 available, no trailer LIQUIDATION PRICE **\$199,500 302-945-2254 • anita@rudymarine.com**

Annapolis, MD • St. Michaels, MD
Deltaville, VA • Woodbridge, VA
Delaware City, DE

CONTACT US TODAY!

info@curtisstokes.net
410.919.4900

**CURTIS
STOKES**
& ASSOCIATES

www.curtisstokes.net

1-888-843-1585 • Private Boat Information on Page 18

YAMAHA
Re-power with Yamaha's
Unmatched Reliability
TAX FREE!

COBIA from 20 - 35 ft.
Just Better Built in Every Way!

PATHFINDER from 20 - 27 ft. **ANGLER DRIVEN**

Brokered Boats WANTED!
Clean, Late Models up to 35 ft. LOW FEES - GREAT RESULTS!

GARMIN
AUTHORIZED RESELLER

Certified Installer

BOAT TRAILERS
Wholesale Pricing!

Tidewater
TRAILERS

RT113BoatSales.net

HAUL OUT AND TRANSPORT SERVICES AVAILABLE

**We have Boats Available with
Special Order Discounts
of up to \$20,000**

**Call Store for Details
302-436-1737**

Say you saw this in the Salty Dog

Cobia 280 CC 2022 - \$CALL
Twin Yamaha F200hp



Cobia 301 CC 2022 - \$CALL
Twin Yamaha F300hp



**Now is the Best Time to
Cash Out.**

**We handle, funding, Payoff, National MLS
and Transport-Delivery
to anywhere in the USA**

**Get Your Boat Sold Fast
and for Top Dollar.**

**Clean late Models, years 2005 and up
powered with Yamaha Outboard Motors**

Call 302-436-1737

Upper Chesapeake Yacht Sales

John Curry • (610) 299-3598

www.upperchesapeakeyachtsales.com



**31' 2013
Bertram Custom
Sportfish
\$395,000**



One of the absolute finest 31' Bertram re-manufactured boats built by renowned Worton Creek Marina. The hull is a 1963 rock solid Bertram that was meticulously restored in 2013 at a cost in excess of \$500,000 and has been kept in a covered shed since completion now having approximately 160 hours on her Yanmar diesels. This is a must see for the discriminating Buyer looking to purchase a great fishing and cruising vessel that may also be considered a maritime "work of art". Boat truly shows as new!



**62' '03 Bruce Roberts
Expedition Trawler,
loaded and mint • \$1,399,900**



**56' '04 Carver 56 Voyager PHMY
T/675hp Volvos, loaded and mint
\$449,900**



**40' '81 Bristol Sloop,
diesel, mint, classic,
\$55,000**



**36' '78/'07 Jarvis Newman FB,
\$500K refit, 330 Cummins,
gen, AC, Mint \$134,900**



**37' '95 Sea Ray
Sundancer, T/7.4L,
gen, AC • \$64,900**



**34' '04 Rinker
342 Fiesta Vee, T/280hp
Volvos, gen, AC, nice
\$59,900**



**32' '94 Baja 32 Calibur,
T/454 Mags, SS exhaust,
2011 trailer, nice
\$28,500**



**29' '94 Luhrs Open
Express SF,
1/2 tower, diesels, gen, AC,
\$39,900**



**27' '17 Scout 275 Dorado,
T/200hp Yamahas, loaded,
trailer, mint • \$169,000**

28' '74 Bertram FB, newer 315 Inboards, AC, clean \$24,900
27' '02 Rinker 270 Fiesta Vee, new engine & Bravo III, trailer available, very nice \$34,900



**Expect The Same
Superior Service From Our
Brokerage That You Get
From Our Marina**

**BOAT SALES & BROKERAGE
• Financing & Insurance Available •**

WORTON CREEK MARINA

23145 Buck Neck Road • Chestertown, MD 21620

(410) 778-3282



WANT TO SELL YOUR BOAT FAST?

A successful brokerage program starts with exposure. Due to our size, Clarks Landing can offer more exposure than most other brokers.

Our experienced, dedicated team handles the entire transaction, including financing, marketing, demonstration rides, haul outs, estimates & more.

List your boat where it is or at one of our facilities.



**2016 Sea Ray
510 Flybridge
New Listing
Low Hours**



**2015 Pursuit 385
Offshore
\$334,900**

IN TODAY'S MARKET, YOUR BOAT WILL NEVER BE WORTH MORE THAN IT IS **RIGHT NOW. OUR EXPERIENCED BROKERS WILL SELL YOUR BOAT FOR TOP DOLLAR.**

Get A Free Market Analysis

www.ClarksLanding.com

- ✓ **Reduced Commissions**
- ✓ **Free Land Storage Program**
- ✓ **Huge Marketing Budget**
- ✓ **Family-Owned over 40 Years**
- ✓ **Free Drone Media Package**
for Listings over \$150K

LIMITED INVENTORY!!! *Buy Now & Cruise Later!*

Scan QR Codes with Your Phone's Camera for Details & Video Tours



on the Manasquan River
847 Arnold Avenue
Point Pleasant, NJ

4TH OF JULY SUPER SALE EXTENDED!

VIAGGIO



JEANNEAU

7.5 Leader

IN STOCK



2100

IN STOCK



Bentley

22 Rear Fish

IN STOCK



ALL BOATS POWERED BY



REPOWER HEADQUARTERS



YAMAHA



Delaware has

NO SALES TAX!

3 GREAT LOCATIONS!

302-945-2254 • 32606 DuPont Blvd Dagsboro, DE 19969

302-999-8735 • 411 S. Maryland Ave. (Rt 4) Wilmington, DE 19804

443-995-3785 • 3033 Kent Narrows Way South, Suite 3 Grasonville, MD 21638





YAMAHA



Revs Your Heart®

**Beacon Light
Marina**

825 Bowleys Quarters Rd. | Middle River, MD 21220

410-335-6200

beaconlightmarina.com | sales@beaconlightmarina.com

**WITH SO MANY WAYS TO HAVE FUN ON A YAMAHA,
*It's easy to find yours at Beacon Light Marina***



ALMARS

We Are A Full Service, Premier Mercury Outboard Repair Center! Let Our Certified Mercury Technicians Service Your Mercury Motor Needs!

LEFTOVER VERADO SALE!

CALL FREQUENTLY FOR UPDATED INVENTORY!

MOTORS ARE ARRIVING DAILY!



225hp
black • \$14,995



250hp
black • \$15,995



300hp
black • SOLD



300hp
white • \$18,995



350hp
Call for Great Deal!



350hp
Call for Great Deal!

We Now Offer
INJECTOR SERVICE
with
ONE Day
Turnaround!



150
4-stroke
Black



150 ProXS
4-stroke
Black



175XL ProXS
4-stroke
Black



200
Sea Pro
Black



225XL
4-stroke
Black



250 XL
4-stroke
White

100's of Used Cowllings In Stock!
Call for Availability!

250XL PRO
VERADO 15,995
Only 1 Available

REMANUFACTURED OUTBOARD ENGINE SALE!

90hp - 250hp 2 Year Warranty

Starting As Low As \$5,495 Call for Details!

CALL US FOR GREAT DEALS ON NON-CURRENT POWERHEADS!

Call us for current pricing new current and noncurrent outboards
NO SALES TAX IN DELAWARE!

701 Washington St., New Castle, DE

302-328-8541

www.almarsoutboards.net

HOURS: Monday - Friday: 8am - 5pm

CALL FOR GREAT PRICING ON NEW & USED MERCURY OUTBOARDS

NO HIDDEN COSTS

NOT RESPONSIBLE FOR TYPOGRAPHICAL ERRORS



All prices good while supplies last!

Pricing includes all rebates.



Worldwide Yacht Sales | Yacht Charters | New Yacht Construction



2002 50' Sea Ray - \$265,500
Ed Pickering - 410.708.0633



1979 42' Post - \$63,000
Ed Pickering - 410.708.0633



1986 40' Oceania - \$78,500
Jason Hinsch - 410.507.1259



1984 36' Uniflite - \$35,000
Ed Pickering - 410.708.0633



1992 35' Luhrs - \$65,000
Tristan Weiser - 609.420.0469



2015 30' Cutwater - \$219,000
Greg Merritt - 813.294.9288



1997 29' Tiara Yachts - \$65,000
Ed Pickering - 410.708.0633



2013 27' Cherubini - \$195,000
Jack Kelly - 609.517.2822



2017 25' South Shore - \$215,000
Curtis Stokes - 410.919.4900



1973 24' Stamas - \$24,900
Wayne Smith - 516.445.1932



2007 20' Cherubini - \$95,000
Jack Kelly - 609.517.2822



2003 20' Cherubini - \$34,900
Bill Boos - 410.200.9295

To see more details about these and all other yachts around the globe, please visit our website below.

Annapolis, MD • Rock Hall, MD • St. Michaels, MD • Delaware City, DE
Deltaville, VA • Woodbridge, VA
Telephone: 410.919.4900 • Email: info@curtisstokes.net

www.curtisstokes.net



23 Ultra



24 HFC



Powered by:



DANNY'S MARINE
(410) 228-0234 • www.dannysmarine.com
 Located on US Rt 50 (mile marker 86) • Chateau Drive near Linkwood, MD
dannysmarine@comcast.net

Limited Time Offers. Not all models qualify. See Participating Suzuki Marine dealer for details or visit www.suzukimarine.com
 ©2020 Suzuki Motor of America, Inc.

CLARKS FLOATS

PIER & PILE

443-871-0436 • CLARKSFLOATS@GMAIL.COM

CLARKS FLOATS
 PIER & PILE

- Floating Docks
- Pile Driving
- Re-Decking

MMCLB #390 I



8x16 KAYAK DOCK



8x12 KAYAK ACCESS



Kayak Floats
Dock Sections • Work Rafts
Swim Platforms • Gang Planks
SS Fasteners • #1 P.T. Lumber
Perma Float Floats
Composite Decking

Deale, MD



ANNAPOLIS CRUISAIR, INC.

Family Owned & Operated for Over 50 Years

SALES • SERVICE • INSTALLATION



U-LINE
U-Line Icemakers
110/115vAC

We will meet or beat
any competitive
price quote for
these products!

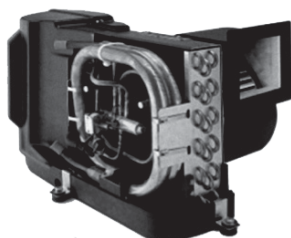


Marine Diesel
Heaters

Espar

Cruisair®

New Turbo
Air Conditioners • Heat Pumps



• We Have • BREATHE EASY AIR FILTERS

➔ **DOMETIC**

SPOTZERO
Fresh Water Reverse Osmosis

Water Purification Systems



Vitrifrigo
REFRIGERATORS



WAECO
Adler/Barbour®

Sentry™
Cruisair

**BATTERY
CHARGERS**

**SAFEST
CHARGER
ON THE
MARKET!**



**Eskimo Ice
600 Ice Pump**

Provides up to 600 lbs. of fresh
ice in a day from your ships
water tank.



STINKY BOAT?

We Have **NEW**
Breathe Easy
Air Purifiers



MARINE AIR SYSTEMS®
AIRRRRRRRRR
by Dometic GROUP



KOHLER®

- Generators -



Fischer Panda

Onan

2124 Renard Ct. • Annapolis, MD

(410) 224-0970 • (410) 974-6136 • Fax (410) 224-0050

www.annapoliscruisair.com



OWN THE BOAT OF YOUR DREAMS



Become the next “**Just Financed**”.
Apply online at **JJBEST.COM** or call **800-USA-1965**.

Offering low rates, long terms, and no prepayment penalties.
Simple application and quick funding.

Looking to refinance? We can help with that too.



UNLIMITED
TOWING
MEMBERSHIP
\$165*



BoatUS.com/Towing
800-395-2628

IT'S EASY TO **SWITCH & SAVE**

The competition can't beat our price or our number of tow boats. With 600+ boats in 300+ ports, you're never far from assistance when you need it. **Time to switch to the Red Boats of TowBoatU.S. and save money!**

*One year Unlimited Saltwater Membership pricing. Details of services provided can be found online at BoatUS.com/Agree. TowBoatU.S. is not a rescue service. In an emergency situation, you must contact the Coast Guard or a government agency immediately.

HEROIC PERFORMANCE

SERVED IN 4 TANTALIZING FLAVORS

Engineered specifically for severe applications in a marine environment with the capability and durability to accommodate all your boating activities on a wide variety of vessels. The Raptor Series by Indmar offers superior craftsmanship in an exclusive line-up that defies every challenge, especially the test of time.



400



404 lb-ft of Torque
350 Horsepower



440



427 lb-ft of Torque
398 Horsepower



460



452 lb-ft of Torque
410 Horsepower



575



580 lb-ft of Torque
510 Horsepower

ENGINE
DISTRIBUTORS
INC. 

Indmar
MARINE ENGINES

800-220-2700 | www.edi-dist.com

RAPTOR
Indmar

ADVERTISERS INDEX

ALMARS.....	7	GEICO.....	16
ANCHOR BOATS.....	24	GOLDSBOROUGH'S MARINE.....	15
ANNAPOLIS CRUISAIR.....	10	GOOTEE'S MARINE.....	15
ATC AUTO/MARINE TRAINING.....	17	HAPPY SKIPPER.....	17
BEACON LIGHT MARINA.....	6	JJ BEST BANC & CO.....	11
BOAT LIFTS UNLIMITED.....	14	UTSCH'S MARINA.....	19
BOAT US.....	12	HANCE & SMYTHE.....	19
CLARKS FLOATS.....	9	RT 113 BOAT SALES.....	2
CLARKS LANDING.....	4	RUDY MARINE.....	5
CURTIS STOKES.....	8, 22	UPPER CHESAPEAKE YACHT SALES..	3
DANNY'S MARINE.....	9	US POWERBOAT SHOW.....	21
ENGINE DISTRIBUTORS.....	13	WATERFRONT.....	23

THE LARGEST LOW PROFILE BOAT LIFT MANUFACTURER IN THE USA

**CALL
US FOR
YOUR LOCAL
DEALER!**



Choose The Right Boat Lift, Choose

- Low Profile Design • Low Maintenance • 2/5 Yr Warr.
- Outside Walkway • Galvanized Steel Construction
- Aluminum Cradles Available • Capacity 800-40,000 lbs. www.magnumlift.com

MAGNUM
BOAT LIFTS
Personal Watercraft Lifts

Fully
Insured

BOAT LIFTS UNLIMITED
410-674-3100 • 1-800-268-5911

**WE SERVICE
MOST MAKES
OF BOAT
LIFTS!**

Located in Odenton, MD, this full-service boat lift manufacturer has a network of over 180 distributors serving the Chesapeake Bay, Great Lakes and Atlantic Coast with Magnum Boat Lifting Products. Boat Lifts Unlimited is dedicated to customer satisfaction through prompt, courteous service on most existing boat lifts and timely installation of new boat lifts. Quality materials, attention to detail and innovative design have made Boat Lifts Unlimited one of the largest boat lift manufacturers in the U.S.

Fishin' Boats From
Fishin' Folks

Summer Savings!



\$59,900

**JUST
ARRIVED**

**2019 Key West
219FS**
Yamaha F200XB
Load-Rite trailer



\$36,995

**2018 G3
Bay 20 DLX**
Yamaha VF115LA



\$25,000

**NEW
PRICE**

**2002
May-Craft
2550CC**
Evinrude
E225FPZSI



\$54,900

**2021 Boca Bay
230 Pro**
Yamaha VF200XA



\$30,195

**2019 Mako Pro
17CC Skiff**

GOOTEE'S MARINE

South of Cambridge On Maryland's Eastern Shore
1439 Hooper's Island Road, Church Creek, Maryland

May-Craft
The Perfect Craft for Your Sport

G3

KW
KEY WEST

800-792-0082

Gootees.com



"Where Happiness Is Just A Boat Ride Away"

July Fireworks Specials

www.crisfield.com/gold



2021 Lowe RX1660 Tiller Jon Pkg
Yamaha 20hp MLH 4-stroke,
EZ Loader galv trailer
LIST PRICE \$10,970

OUTBOARD MERCURY SALE

2.5HP MH \$699
4HP MH \$1,375
25HP ELPT \$2,550

YAMAHA

2.5HP MH \$999
15HP MLH \$2,795



2021 18 Lookout Skiff
Open Tiller Package, Boat Only
LIST PRICE: \$13,295

Goldsborough's Marine

709 W. Main St., Crisfield, Maryland
Ph.# 410-968-0852 • Email: merc71@verizon.net




96RT 17-20 3100
Galvanized • \$3,695



**Trailer Blowout
Special!**



**1,700 LBS Galvanized
Bunk Trailer • \$2,695**



**YOUR
ENJOYMENT
MADE EASY**

GEICO[®]
FOR YOUR BOAT

Get a GEICO quote for your boat and, in just 15 minutes, you'll know how much you could be saving. If you like what you hear, you can buy your policy right on the spot. Then let us do the rest while you enjoy your free time with peace of mind.

geico.com/boat | 1-800-865-4846

Some discounts, coverages, payment plans, and features are not available in all states, in all GEICO companies, or in all situations. Boat and PWC coverages are underwritten by GEICO Marine Insurance Company. In the state of CA, program provided through Boat Association Insurance Services, license #0H87086. GEICO is a registered service mark of Government Employees Insurance Company, Washington, DC 20076; a Berkshire Hathaway Inc. subsidiary. © 2020 GEICO 20_206641



HAPPY SKIPPER
Follow Your Compass

We're the New Kids on the Dock!

Fun & Unique Nautical Apparel & Accessories

Motor or Sail - We Have Something for You!

www.thehappyskipper.com

888-747-1615



MARINE TECHNICIAN TRAINING

RIDE THE CREST
to career success

ENROLL FOR TRAINING TO BECOME A PROFESSIONAL
MARINE SERVICE TECHNICIAN

Our in-depth program includes training in: Seamanship, AC & DC Electrical, ABYC Standards, Air Conditioning & Refrigeration, Mechanical Systems, Stern Drives/Transmissions, Computerized-Fuel Injected Inboard and Outboard Engines, Inboard, Outboard and I/O Systems, Electronic Diesel Engines (Cummins QSB 5.9 380 HP Common Rail Trainer), Fiberglass & Gelcoat Repair, Plumbing and Sanitation Systems.

Financial Aid for those who Qualify • Career Placement Assistance

CALL NOW 866-905-4278
www.autotraining.edu
900 Johnsville Blvd., Warminster, PA 18974

Supported by
MERCURY & **HONDA MARINE**
with Training Materials & Equipment

For required program disclosure information, please go to www.autotraining.edu/consumerinformation.

FREE LISTING WITH PHOTO ON THE INTERNET

PRIVATE AD RATES

- ☐ INTERNET ONLY UP TO 1 YEAR..... \$39⁰⁰
- ☐ 3 ISSUES NO PHOTO CLASSIFIED..... \$49⁰⁰
- ☐ 3 ISSUES WITH COLOR PHOTO
WITH COLOR PHOTO ON INTERNET..... \$59⁰⁰
- ☐ INTERNET FEATURE ADD ON 4 WEEKS
AVAILABLE WITH AD PURCHASE ONLY!
ON THE SALTY DOG HOME PAGE..... \$49⁰⁰
- ☐ FRONT COVER..... \$40⁰⁰
- ☐ FACEBOOK FEATURE..... \$15⁰⁰
- ☐ PUBLICATION MAILED TO YOU..... \$3⁰⁰

TOTAL

FRONT COVERS ARE BASED ON AVAILABILITY

- ☐ CHECK ☐ MONEY ORDER ☐ DISCOVER
☐ MASTERCARD ☐ VISA ☐ AMERICAN EXPRESS

CC#

Expiration Date _____ Security Code _____

Advertiser's Name

Address

Phone

Where did you pickup "The Salty Dog"?

Store

Town

Fill out the description form below, **up to 125 characters (including spaces & punctuation) of advertising.** Please put one character per space beginning with the motor. Include a check, money order or credit card, and mail to us with a good quality COLOR photograph of your boat. Photos will only be returned if accompanied by a self-addressed stamped envelope.

AD COPY

FT. _____ YR. _____

MANUF. / MODEL _____

MOTOR _____

ACCESSORIES _____

LOCATION OF BOAT _____, _____
City State Zip Code

PRICE _____

PHONE # _____

EMAIL _____

**Send to: The Salty Dog
254 Brick Blvd • Suite 1
Brick, NJ 08723**

888-843-1585

Fax (732) 477-9000 • Email: info@thesaltydog.com

No refunds after Ad is processed. • Advertiser will be responsible for \$20 fee on returned checks.

YOUR BOAT LISTING CAN ALSO BE SUBMITTED ON THE INTERNET www.thesaltydog.com

SPECIAL FEATURES

PRIVATE BOAT ADSPg. 20

SUBSCRIPTION CHESAPEAKE BAY

SALTY DOG is published Bi-weekly 25 times a year.

Papers are mailed **FIRST CLASS**. Your first issue will be mailed within 1 week.
To subscribe, just fill in the amount of issues and multiply by \$2.00*

No. of issues _____ x \$2.00* = Total Cost _____

☐ CHECK ☐ MONEY ORDER ☐ MASTERCARD ☐ VISA

Credit Card No. _____

Exp. Date _____

Signature _____

Name _____

Address _____

City _____ State _____ Zip _____

Telephone _____

*Canada Subscription Add 10% - Bermuda Subscription Add 30%
Outside the Continental USA Add 50% • Credit Cards Only Outside USA



Mail To: THE SALTY DOG, 254 Brick Blvd • Suite 1, Brick, NJ 08723



A Bi-weekly Publication for
Powerboats, Sailboats, Marine
Equipment, Supplies, Services,
Waterfront and Photo Ads

For More Info on Display Ads or Internet Listings

Call 888-843-1585 • Fax (732) 477-9000

info@thesaltydog.com • Mon.- Fri. 9:00 am to 4:00 pm

Since 1959

HANCE and SMYTHE INC.

Used Boats Specials!

**Closed
Tuesday**



**2010 Key West
1520 CC,
2011 Yamaha 70hp
4-stroke, high bow
rail, swim platform
\$13,950**



**2001 Boston Whaler
22' Dauntless CC**
2001 Mercury 200hp
2-stroke DFI, bimini
sun top, full stern seat
w/storage, full bow rail,
console cover,
Raymarine GPS,
porta potty
\$23,500



**2018 Boston Whaler
230 Outrage**
Mercury 250hp Verado 4-stroke
w/digital throttle shift, anchor
windlass, hardtop w/encl & gull
wings, custom canvas covers
& bolsters, radial ORs, VHF,
RaymarineS97 navigation pkg,
Fusion stereo,
lockable glove box
\$115,000



2016 Boston Whaler 270
Vantage • T/Mercury 225hp
 Verado 4-stroke, anchor windlass,
 bow cushion, bow table, marine
 head, 19 gallon livewell,
 transom rodholders, RWWDD,
 fishing station, gunnel storage,
 toe rails, hardtop with weather
 curtains, batt charging system,
 stereo, elects pkg, custom
 cockpit cover • **\$154,950**

**Boston Whaler
Parker • Key West
Yamaha
Evinrude/Johnson**

www.hanceandsmythe.com
(609) 597-7813

**1225 East Bay Ave
Manahawkin, NJ**

UTSCH'S YACHT SALES

BETWEEN CANAL AND SCHELLENGER'S LANDING

Rt. 109 & Cape May Canal, Cape May, NJ (609) 884-BOAT (2628)

LICENSED

www.capemayharbor.com

INSURED



**40' 2001 Carver 374 Voyager,
T/320hp Mercs • \$65,000**



**31' 1998 Tiara Express,
T/Crusaders, \$39,900**



**35' 1975 Gulfstar Trawler,
T/Dsls • \$19,900**



**34' 1986 Silverton Convertible,
T/V8 gas, \$19,900**



**28' 1976 Luhrs Flybridge Sedan,
Crusader V8, \$3,500**



**32' 1993 Carver,
T/Gas V8s • \$19,900**



**28' 1988 Carver,
T/V6 Mercruisers, sleeps 4-6, \$6,000**



**28' 1995 Bayliner Cruiser,
V8 Mercruiser I/O, \$10,000**

36' 1979 Pacemaker FV Convertible, T/350hp V8	\$10,900
36' 1988 Pacemaker FB Convertible, T/Merc 454 cu in V8 gas	\$19,900
36' 1985 PT Trawler, T/Perkins 210hp diesels	Owner Wants Offer
34' 1981 Silverton FB Conv, T/Crusader V8 gas.....	\$8,900
33' 1994 Carver, T/Crusader V8 gas	\$30,000
32' 1993 Rinker Fiesta Vee, Repo	CALL
31' 2005 Carolina Classic Express, T/Volvo Penta D6 310hp Dsls.....	SOLD
30' 1985 Century 300 Grande, T/V8 gas inboard	Reduced \$7,500
29' 1996 Dawson Express w/tower, T/Cummins Dsls	SOLD

29' 2001 Seamaster Classic, 250hp Mercruiser I/O	\$7,500
29' 1982 Aquasport, T/PCM V8 gas, 330hp each, electronics	Reduced \$11,900
28' 1981 Silverton Convertible, TV/8 gas, AS IS, REPO	CALL
28' 2005 Pursuit Walkaround, T/Yamaha 225hp OBs, very clean	SOLD
25' 1973 Bristol Sloop, 9.9hp outboard	\$2,500

- MISC EQUIPMENT -

Approximately 60 lineal feet of 10' wide concrete, Bellingham Marine Floating Docks, very heavy construction	\$4,000
1950 Hydraulic Cutterhead Dredge, 471 Detroit Diesel, 6' pump	\$49,900

See Color Photo on the Internet



40' 2006 FORMULA 400 SS, T/Volvo Dsls, many updates, loaded, \$219,000, 609-693-9423 tidesendmarina1@gmail.com 152565

See Color Photo on the Internet



29' 2009 Azure AZ298, Beautiful 29' Open Bowrider- 16 person Capacity- 70 Gallon fuel tank- Engine MerCruiser 496 MAG HO - Bravo Three Twin Prop- 425 HP - Dual Battery with Switch - GPS-Head/Shower- luxury lounge seating w/ arm rests and fold down Bathing Seating- sink and plenty of storage- 3 underseat coolers with drainage for beverage/fish- bimini top and full Top Cover and storage cover- 215 hours - BRAND NEW- exhaust manifolds, sea water pump, alternator and starter
\$49,700
732-642-3577
cynthia.zulick@cardinalfinancial.com

See Color Photo on the Internet



25' 2015 PARKER 2520 XLD, Twin Yamaha F200, open back pilothouse, custom rodholders, 4G radar, \$109,000, 732-899-8010 sales@schraderyachts.com 152769

See Color Photo on the Internet



39' 2017 PURSUIT OS 385 Offshore, Yamaha 300hp, Less than 300 hours on Engines, Warranty on engines until 9/2024, Dual 16" Garmin 7616 w/ night flare/fusion/Flir/Radar, \$475,000, 410-507-5247 chase@yachtbrokersofannapolis.com 152994

See Color Photo on the Internet



25' 2009 NOVURANIA 750 Launch, RIB tender with 300hp Volvo diesel & Hamilton Jet Drive. Over \$13,000 in updates over the past two years. GPS/ SAT Radio, \$37,000, 908-783-1491 rgilman@nelsonward.com 153183

See Color Photo on the Internet



32' 1975 TROJAN FLYBRIDGE, Twin 318 Chryslers, microwave, full kitchen, head, \$5,000, 973-713-3495 153032

See Color Photo on the Internet



28' 1988 BERTRAM FLYBRIDGE, T/Captain's Choice Crusaders, less than 400 hours, 11' beam, new fuel tank, full enclosure, electronics, \$35,995, 908-309-4016 almarmarine1@gmail.com 152807

See Color Photo on the Internet



24' 1999 Baja H2X, Big Block 7.4L MPI, 390 hrs, custom painted ODs, no bottom paint, trailer, runs like new, \$26,900, 610-513-3331 genebaja@comcast.net 152978

See Color Photo on the Internet



31' 2000 SEA RAY 310 SUNDANCER, T/Merc 5.7L, BIII, gen, windlass, remote spotlight, power vent, ready to cruise! \$59,900 OBO, 917-817-5084 info@deepwaterlanding.com 153035

See Color Photo on the Internet



28' 1997 MAXUM 2800 SCR, Merc 7.4L 300hp, Engine 450 hrs, Bravo III, stainless steel counter rotating props, marine head, water heater, a/c, VHF/GPS w/fishfinder, 2 burner alcohol/ele stove, microwave, \$17,500, 410-371-6426 rjpsep1948@gmail.com 153207

See Color Photo on the Internet



20' 2003 SUGAR SAND CALAIS, 210hp Sport Jet, runs great, 40 MPH, \$7,295, 908-309-4016 almarmarine1@gmail.com 152017

See Color Photo on the Internet



31' 2004 RINKER Fiesta 312 Vee, Twin 350 volvos, 2004 Rinker - New A/C, upgraded outdrives, FWC, well maintained, good condition!
\$39,900
703-675-0058
Justmyboat@gmail.com 153052

See Color Photo on the Internet



28' 2000 BOSTON WHALER CONQUEST, 2015 T/250hp Yamaha 4-strokes, 725 hours, extensive elects, new Eisenglass, many upgrades, in water, ready to go, 2021 slip ava, 917-817-5084 info@deepwaterlanding.com 153184

See Color Photo on the Internet



20' 1994 HUETHER GARVEY, 90hp Mercury 4-stroke, Garmin GPS/DF, Teleflex Sea Star, 2 batts, baitwell & bilge pump, no trailer, \$4,000, 443-521-0609 rich.7119@yahoo.com 153062

See Color Photo on the Internet



26' 2002 COBIA CENTER CONSOLE, 500 hours w/ new \$6K trailer, new canvas, new electronics, turn key, everything works, 908-489-5098 seaportpics@gmail.com 152665

See Color Photo on the Internet



14' 2013 LIVINGSTON LV14 CATAMARAN, Mercury 20hp 4-stroke, electric start, custom cover, \$7,850, 732-899-8010 sales@schraderyachts.com 153036

WELCOME BACK TO ANNAPOLIS



UNITED STATES POWERBOAT SHOW

OCTOBER 7-10, 2021
CITY DOCK, ANNAPOLIS, MD

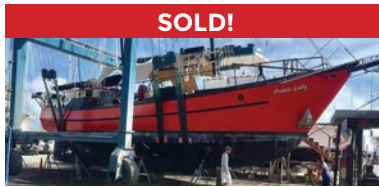


SHOW UPDATES + TICKETS: AnnapolisBoatShows.com





Worldwide Yacht Sales | Yacht Charters | New Yacht Construction



SOLD!

72' Trade Rover



SOLD!

50' Chris-Craft



SOLD!

48' Evans Boats



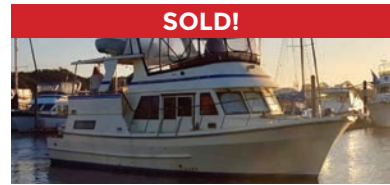
SOLD!

44' DeFever



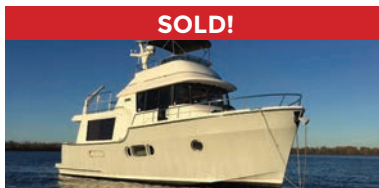
SOLD!

44' Gulfstar



SOLD!

42' Fu Hwa



SOLD!

40' Fathom



SOLD!

40' Hinckley



SOLD!

36' C&C



SOLD!

36' Bristol



SOLD!

32' Eagle



SOLD!

26' Sisu

List your boat with us and join our **SOLD** list!

To see more details about these and all other yachts around the globe, please visit our website below.

Annapolis, MD • St. Michaels, MD • Delaware City, DE • Deltaville, VA • Woodbridge, VA
Telephone: 410.919.4900 • Email: info@curtisstokes.net

www.curtisstokes.net



WATERFRONT MARINE

#1 GOLL AVE, SOMERS POINT, NJ ~ 609-926-1700

281 PRINCETON AVE, BRICK, NJ ~ "Featuring Chaparral & Carver" 732-202-6961

2822 SOLOMON'S ISLAND RD, EDGEWATER, MD ~ 443-949-9041

Premium Brands ~ Exceptional Service

WWW.WATERFRONTMARINE.COM

ORDER YOUR BOAT NOW!



- PREOWNED BOATS -



Located in Somers Point
2012 Everglades 350 LX Sportfish,
T/Yamaha F350 OBs • \$239,900



Located in Somers Point
2020 Robalo R227 DC,
Yamaha F200XB • \$66,900



Located in Somers Point
2016 Cypress Cay 230 Sea Breeze Tritoon
Mercury 150hp 4-stroke • \$39,900

BOWRIDERS & PONTOONS

28' '12 Chaparral 287 SSX, 8.2L	Pending
27' '10 Chaparral 276 SSX, Volvo Penta 8.1L 375 duo prop	Pending
24' '15 Chaparral 243 Vortex Jet Boat	SOLD
24' '11 Chaparral 246 SSi, Volvo Penta 5.7L 300hp DP	Pending
24' '18 Chaparral 2430 VRX	Pending
24' '15 Chaparral 243 Vortex	Pending
23' '04 Yamaha AR230 Jet Boat, w/trailer	Pending
23' '18 Bennington 23SSRX Tri-Pontoon, Mercury 250hp	SOLD
23' '07 Monterey 234	Pending
22' '11 Chaparral 224 Sunesta	Pending
22' '14 Bennington 2275 GCW, Yamaha F150, 2018 Load Rite trl	SOLD
22' '06 Sea Ray 220	Pending
20' '11 Stingray 208 LR	Pending
20' '07 Cobalt Bowrider	Pending

CRUISERS & CUDDY CABINS

38' '06 Cruisers Yachts 385 Motor Yacht	Pending
36' '11 Rinker 360 Cruiser	Pending
33' '06 Chaparral 330 Signature, T/Volvo Penta 5.7 DP	\$99,900
33' '12 Chaparral 330 Signature	Pending

23' '88 Chaparral 235XLC, 5.7L Merc	\$7,900
-------------------------------------	---------

FISHING BOATS

31' '16 Sportsman 312 Center Console, T/Yamaha F300	SOLD
31' '20 Robalo R317, T/Yamaha F300s, less than 20 hrs, NBP	SOLD
31' '18 Robalo R317 DC, T/Yamaha F300 OBs, lift kept	SOLD
30' '17 Robalo R302, T/Yamaha F300 XCA	SOLD
30' '17 Robalo R302 CC, T/Yamaha 300hp	Incoming
27' '19 Robalo R272, T/Yamaha F200, lift kept, trailer	Pending
24' '18 Robalo R246 Cayman CC, Yamaha F300, trailer	\$72,997
24' '18 Robalo 246 Cayman CC, Yamaha F300	Pending
23' '99 Boston Whaler 23 Outrage, T/'11 Evinrude 150hp E-Tec	\$46,500
22' '19 Robalo 226 Cayman CC Yamaha F200, trailer	SOLD
20' '13 Robalo R200, Yamaha F150hp, trailer	\$39,900
20' '19 Robalo R200, Yamaha F150, trailer	\$46,000
20' '03 Sea Fox 205 DC	Pending
20' '96 Trophy 2002 WA	\$8,900
19' '15 Maycraft 1900 CC, Evinrude 115hp E-Tec, trailer	SOLD
19' '17 Yamaha 190 CC, High Output Jet, 70 hours	\$31,900
18' '16 Robalo R180, Yamaha F115, trailer	\$37,900
17' '17 Boston Whaler 17 Montauk, Merc 90hp 4-stroke	SOLD



AUTHORIZED
PARTS &
SERVICE



Large Indoor Showroom

OPEN 7 DAYS A WEEK



FOUR WINNS



KEY WEST



Scout
Discover More...



G3 Boats



We Have Trailers Available! Call for Info!

YAMAHA BUILT TO LAST

410.287.8280

ANCHOR BOATS
North East, Maryland

www.AnchorBoat.com
448 MAULDIN AVE | NORTH EAST, MD 21901

Parts & Service
General Boat Repairs
High & Dry Boat Storage