

Free!



# The Salty Dog



## CHESAPEAKE BAY EDITION

Published Every Other Week • Distributed in Maryland, Delaware, Southern Pennsylvania and Virginia

### POWERBOATS & SAILBOATS ...Including Marine Services



**JEANNEAU**  
NC 695 Sport  
**Largest Inventory of  
In Stock Boats in the Region!**  
302-945-2254  
[www.RudyMarine.com](http://www.RudyMarine.com)



**Bentley**  
Elite  
**Largest Inventory of  
In Stock Pontoons in the Region!**  
302-945-2254  
[www.RudyMarine.com](http://www.RudyMarine.com)



**32' 2006 TOPAZ EXPRESS**, T/Cat C7 460hp, 2200 hours, 400 gallon fuel, 25 MPH, Furuno Navnet equip, new cushions & carpet, Onan 5kw gen, serious inquiries only, **\$169,999**, 732-547-5045, [frostheatandair@aol.com](mailto:frostheatandair@aol.com) 153914



**46' 2002  
CARVER YACHTS**  
466 MOTOR YACHT  
new bimini, enclosure,  
bow thruster, 8D house  
engine batteries,  
season slip included at  
SHM in Beach Haven, NJ,  
**\$259,900**  
973-479-1031  
[toddbrown@optonline.net](mailto:toddbrown@optonline.net)  
155439

**List Your Boat  
As Low As \$59!**  
**Go to [www.thesaltydog.com](http://www.thesaltydog.com)  
to get started!**  
**Private Boat Ads Only**



**24' 1989 GRADY WHITE OFFSHORE**, 1999 225hp Evinrude, 214 hrs, EZ Load trl w/brakes - '24 tags, Strongarm elec winch, 190 quart fish box & live bait, canvas/wind/floor helm, toilet, 1-2 bunk, **\$17,000**, 302-893-5640, [ara@arailustrated.com](mailto:ara@arailustrated.com) 155875



**(2) YAMAHA F300 SS PROPS**, left and right, 15 1/4" X 19", BOTH \$700 OBO, 302-226-3734 154303



**19' 2001 CHAPARRAL SPORT SSI**, clean condition, 240 hrs on engine 250 Volvo Penta engine, comes with Gator trailer, \$20,000, 443-856-8700, [thyen1318@gmail.com](mailto:thyen1318@gmail.com) 154701



**20' 1983 CUSTOM BUILT MINI TUGBOAT**, custom wood/F/B 20hp Diesel Yanmar, keel cooled dry stack exhaust, includes trailer, in water, **JUST REDUCED! 14,000**, 609-519-3583, [harbornj@yahoo.com](mailto:harbornj@yahoo.com) 153457

Annapolis, MD • St. Michaels, MD  
Deltaville, VA • Woodbridge, VA  
Delaware City, DE

**CONTACT US TODAY!**  
[info@curtisstokes.net](mailto:info@curtisstokes.net)  
410.919.4900

**CURTIS  
STOKES**  
& ASSOCIATES

[www.curtisstokes.net](http://www.curtisstokes.net)

**1-888-843-1585 • Private Boat Information on Page 18**



410-784-7624

10551 Eldon Willing Rd  
Chance, MD 21821

bobbykemp@scottscovemarina.com



TOHATSU



75HP

90HP

115HP



# Upper Chesapeake Yacht Sales

**John Curry • (610) 299-3598**  
**www.upperchesapeakeyachtsales.com**



**42' 1986  
Carver  
4207 ACMY  
\$44,900**



Big roomy "condo" like cruiser with two private staterooms with heads and separate showers. Large flybridge with recent canvas seats six comfortably. Enclosed aft deck with wing doors. Large galley with newer SS full size refrigerator and SS microwave/convection oven, double SS Sink. Fresh bottom paint and new batteries. Priced to sell quickly for new owner to decorate to their own taste. Smaller trades considered and offers encouraged.

**REDUCED!**



**34' '84 Silverton FB Convertible, T/270hp, gen, AC, very nice • \$19,900**



**34' '05 Rinker 342 Fiesta Vee T/300hp Mercs, new BIII, gen, AC, loaded & mint • \$79,900**



**29' '92 Sea Ray Sundancer 7.4L Merc, Bravo, AC, mint cond, trailer • PENDING**



**29' '84 Dyer Soft Top Express • 200hp diesel, very nice • \$64,900**



**28' '74 Bertram FB newer 315 Inboards, AC, clean • \$17,900**



**26' '07 Bluefin Custom Sportfish CC • S/Diesel, tower, mint cond • \$64,900**



**26' '86 Pacemaker FB Cruiser • New 350hp Merc, very nice • \$29,900**



**21' '04 Pro-Line 20 WA 150hp Merc, hardtop, '15 trailer, nice • \$15,900**



**21' '00 Sea Ray 215 Express Cruiser • 2007 trl, very clean • PENDING**



**19' '15 Tracker Targa 18 WT 150hp 4-stroke, '20 trailer, mint, loaded • \$29,900**

**31' '13 Bertram Custom Sportfish, Yanmar Dsls, 160 hours ..... Pending**  
**28' '19 Regulator CC, T/300hp Yamahas, 30 hours, loaded, mint condition ..... COMING SOON!**  
**27' '02 May-Craft Pilothouse, T/'06 200hp E-Tec, trailer, nice ..... \$39,900**



**Expect The Same  
Superior Service From Our  
Brokerage That You Get  
From Our Marina**

**BOAT SALES & BROKERAGE**  
**• Financing & Insurance Available •**

**WORTON CREEK MARINA**

23145 Buck Neck Road • Chestertown, MD 21620

**(410) 778-3282**

# CALL TO RESERVE YOUR 2022 SLIP OR RACK SPOT

## Best and Fastest Access to the Bay

- 100+ Wet Slips
- 70+ Indoor Racks
- 50+ Outdoor Racks & Trailer Parking
- High Speed Wireless Internet at all Slips
- In/Out Service (call ahead)



PARISH CREEK  
LANDING  
Marina • Boatyard • Boatel

"WE WANT TO BE YOUR BOAT'S HOME!"

### CALL FOR OUR SPECIALS!

4819 Woods Wharf Road  
Shady Side, MD 20764

**410-867-4800**  
[parishcreeklanding.com](http://parishcreeklanding.com)

YEAR ROUND  
**SLIPS • BOATEL  
SERVICE**  
Direct Access to the Bay

## GOLDSBOROUGH'S MARINE



"Where Happiness Is Just A Boat Ride Away"

[www.crisfield.com/gold](http://www.crisfield.com/gold)

**LOADRITE**

14F1000WT (1000LBS) Galv. ....	\$1,325.00
16F1200WT (1200LBS) Galv. ....	\$1,395.00
16170076DWT (1700LBS) Galv. ...	\$2,395.00
18150076DWT (1500LBS) Galv. ...	\$2,595.00



3.5HP MH.....	\$1,030.00
4HP MH.....	\$1,375.00
8HP MH.....	\$2,095.00
20HP ELH .....	\$3,495.00
25HP MH.....	\$3,490.00



## Goldsborough's Marine

709 W. Main St., Crisfield, Maryland

Ph.# 410-968-0852 • Email: [merc71@verizon.net](mailto:merc71@verizon.net)





**IN STOCK NOW FOR IMMEDIATE PURCHASE**

F250XB  
F200XB  
F200LB  
F150XB  
LF150XB  
F150LB  
VF150XB  
VF150LB  
F115XB  
VF115LA  
F115LB



F90LB  
F70LA  
F60LB  
T60LB  
T50LB  
F40LA  
F40LEHA  
F25LWHC  
F9.9SMHB  
F6SHA  
F4SHA  
F2.5SMHB  
F2.5LMHB

**AVAILABLE  
MODELS**

**AVAILABLE  
MODELS**

**RUDY MARINE IS RENOWNED FOR  
EXPERT ENGINE RIGGING SERVICES**

**VERY LIMITED QUANTITIES ON SOME MODELS**



**DEALER INQUIRIES WELCOME**

32606 DUPONT BOULEVARD, DAGSBORO, DE 19939  
ONLY MINUTES FROM THE CAPE MAY-LEWES FERRY

**302-945-2254**

DELAWARE HAS

**NO SALES TAX!**



# SAVE when you Sell ... and when you Buy

*boaters first*<sup>TM</sup>  
**yachtx.com**

The trusted alternative to high cost brokerage and the hassle & risks of FSBO, we make selling your boat easy, safe and produce better outcomes with professional advisors, Web transaction management, escrow and multi-platform marketing - all for just 1.5% or less.

Ask about our buyer representation rebate  
... and YachtX Rewards<sup>TM</sup> referral program.

boaters saving 85% in selling costs through yachtx.com



boaters receiving thousands in buyer rebates through yachtx.com



## 443.888.9190

"YachtX", "Boaters First", "YachtX Rewards" are trademarks of YachtX, Inc.





**CAROLINA SKIFF****23 Ultra****SEA CHASER**  
By: Carolina Skiff, Inc.**24 HFC**

Powered by:



**DANNY'S MARINE**  
**(410) 228-0234 • www.dannysmarine.com**  
 Located on US Rt 50 (mile marker 86) • Chateau Drive near Linkwood, MD  
**dannysmarine@comcast.net**

Limited Time Offers. Not all models qualify. See Participating Suzuki Marine dealer for details or visit [www.suzukimarine.com](http://www.suzukimarine.com)  
 ©2020 Suzuki Motor of America, Inc.

Fishin' Boats From  
Fishin' Folks

# HOT SUMMER SAVINGS!

**\$69,900**

**2021 Key West Boats 219 FS -**  
Center Console, Yamaha Engine

**\$65,000**

**2020 Key West Boats 219 FS -**  
Center Console, Yamaha Engine

**\$149,900**

**2000 Cape Horn 27 CC - Yamaha**  
Engine, with trailer

**\$19,995**

**2019 Wellcraft 162 Fisherman -**  
Mercury Engine, with trailer

**\$36,500**

**2000 HydraSports 2100WA -**  
2015 Yamaha Engine, with trailer

**\$45,000**

**2019 Carolina Skiff 21 Sea Chaser -**  
Suzuki Engine, with trailer

# GOOTEE'S MARINE

South of Cambridge On Maryland's Eastern Shore  
 1439 Hooper's Island Road, Church Creek, Maryland

**May-Craft**  
The Perfect Craft for the Sport

**G3** **KW**  
KEY WEST

**800-792-0082**  
**Gootees.com**



Worldwide Yacht Sales | Yacht Charters | New Yacht Construction

**SOLD!**



1983 55' Ocean Yachts

**SOLD!**



2002 50' Sea Ray

**SOLD!**



2008 49' Hunter

**SOLD!**



2001 48' Sea Ray

**SOLD!**



2000 46' Beneteau

**SOLD!**



2001 39' Island Packet

**SOLD!**



2000 36' Monk

**SOLD!**



1985 35' Markley

**SOLD!**



2000 34' Little Harbor

**SOLD!**



2006 34' Mainship

**SOLD!**



2003 29' Hinckley

**SOLD!**



2017 24' Boston Whaler

Thinking of selling your Boat? List with us and join our **SOLD** list!

To see more details about these and all other yachts around the globe, please visit our website below.

Telephone: 410.919.4900 • Email: [info@curtisstokes.net](mailto:info@curtisstokes.net)

**[www.curtisstokes.net](http://www.curtisstokes.net)**



# ALMARS

**PLEASE CALL FOR UPDATES!**  
Motors Are Slowly Arriving!

**We Are A Full Service, Premier Mercury Outboard Repair Center! Let Our Certified Mercury Technicians Service Your Mercury Motor Needs!**

**CALL  
NOW TO  
ORDER  
YOUR  
4-STROKE!**



150  
4-stroke  
Black



150 ProXS  
4-stroke  
Black



175XL ProXS  
4-stroke  
Black



200  
Sea Pro  
Black



225XL  
4-stroke  
Black



250 XL  
4-stroke  
White

## NOW IN STOCK!

### SEVERAL SMALL MOTORS 2.5HP - 150HP!

Call for Configuration & Compatibility!



**2.5HP  
3.5HP  
4HP  
5HP**

**6HP  
8HP  
9.9HP  
15HP**

**20HP  
25HP  
50HP  
60HP**

**75HP  
115HP  
150HP**



**THESE WILL GO FAST!**

**100's of Used Cowllings  
In Stock!  
Call for Availability!**

**We Now Offer  
INJECTOR SERVICE  
with ONE Day Turnaround**

**REMANUFACTURED OUTBOARD ENGINE SALE!**

90hp - 250hp 1 Full Year Warranty

**Starting As Low As \$5,495 Call for Details!**

**CALL US  
FOR GREAT  
DEALS ON  
NON-CURRENT  
POWERHEADS!**

Call us for current pricing new current  
and noncurrent outboards  
**NO SALES TAX IN DELAWARE!**

701 Washington St., New Castle, DE

**302-328-8541**

[www.almarsoutboards.net](http://www.almarsoutboards.net)

HOURS: Monday - Friday: 8am - 5pm  
CALL FOR GREAT PRICING ON NEW  
& USED MERCURY OUTBOARDS

**NO HIDDEN COSTS**  
NOT RESPONSIBLE FOR TYPOGRAPHICAL ERRORS



All prices good  
while supplies last!

Pricing includes all rebates.



# CLARKS LANDING

YACHT SALES

## WANT TO SELL YOUR BOAT FAST ?

**A successful brokerage program** starts with exposure. Due to our size, **Clarks Landing can offer more** exposure than most other brokers.

**SOLD IN 10 DAYS**



**2010 38 Buddy Davis**  
\$249,900

**SOLD**



**2017 Riviera 3600**  
**Sport Yacht • \$429,900**

**SOLD**



**2016 Ocean Yachts**  
**Bill Fish • \$599,000**

**SOLD**



**2021 27 Sea Hunt Gamefish**  
\$159,900

- ✓ **Reduced Commissions**
- ✓ **Free Land Storage Program**
- ✓ **In House Marketing Team**
- ✓ **Family-Owned over 40 Years**
- ✓ **Free Drone Media Package for Listings over \$75K**  
*Locations in NJ & MD*

**Get A Free Market Analysis**

**[www.ClarksLanding.com](http://www.ClarksLanding.com)**

# CLEAR THE DECKS!

# SAVE THOUSANDS OFF

**These Few Remaining New 2022 Models  
As We Are Making Way For Our Incoming 2023 Inventory!**

# Wellcraft®



202 Fisherman



222 Fisherman



242 Fisherman



302 Fisherman



# CLARKS LANDING

YACHT SALES

on the Manasquan River  
847 Arnold Avenue  
Point Pleasant, NJ

**732-899-5559 • [www.ClarksLanding.com](http://www.ClarksLanding.com)**





**MIDLANTIC  
MARINE  
CENTER**  
**302-436-BOAT (2628)**

*Closed Sunday & Monday  
Tuesday-Friday 8AM-4:30PM  
Saturday 8AM-4PM  
36624 DuPont Boulevard Selbyville, DE  
[www.midlanticmarinecenter.com](http://www.midlanticmarinecenter.com)*

# NEW STARCRAFT PONTOONS & DECK BOATS IN STOCK AND READY FOR DELIVERY!



Trailer Available at Additional Cost  
2023 Starcraft LX16F  
Yamaha F40LA 4-stroke  
MSRP \$28,834 • Call for Price



2023 Starcraft LX16R  
Yamaha F40LA 4-stroke  
MSRP \$28,834 • Call for Price!



2023 Starcraft EX20C  
Yamaha F70LA 4-stroke  
MSRP \$40,411 • Call for Price!



2023 Starcraft EX 22 CSG  
Yamaha F115 4-stroke  
MSRP \$49,126 • Call for Price!



2022 Starcraft LX22F  
Yamaha F90LB 4-stroke  
MSRP \$42,583 • Call for Price!



2022 Starcraft CX23DL  
Yamaha Vmax VF115LA 4-stroke  
MSRP \$63,387 • Call for Price!



2022 Starcraft EX24R  
Yamaha F115LB 4-stroke  
MSRP \$53,531 • Call for Price!



2022 Starcraft EXS-3 Tritoon  
Yamaha F150XB 4-stroke  
MSRP \$64,479 • Call for Price!



2022 Starcraft SLS-3 Tritoon  
Yamaha F150XS 4-stroke  
MSRP \$68,863 • Call for Price!



2023 Starcraft EXS 1  
Mercury 115hp 4-stroke CT  
MSRP \$58,848 • Call for Price!



2022 Starcraft SLS-5 DC Tritoon  
Mercury 300XL DTS 4-stroke  
MSRP \$102,810 • Call for Price!



Trailer Available at Additional Cost  
2023 Starcraft SVX 171 OB Deck Boat  
Mercury 90hp 4-stroke  
MSRP \$40,675 • Call for Price!

## Discount Trailer Sales • Call for Pricing!



**5 STAR TRAILERS**

**LOADRITE**







COME CELEBRATE  
**50 YEARS IN ANNAPOLIS**

**UNITED STATES POWERBOAT SHOW**

**OCTOBER 6 – 9, 2022**

**CITY DOCK, ANNAPOLIS, MD**



PLAN YOUR VISIT + PURCHASE TICKETS AT [AnnapolisBoatShows.com](https://AnnapolisBoatShows.com)





A man in a red shirt and sunglasses is giving a thumbs up from a red boat. The background shows a blue sky and a body of water with another boat in the distance.

# BETTER SAFE THAN SORRY

When things go south on the water, it can happen in a flash so make sure you have towing from TowBoatUS. It's the biggest and best towing service around, with 600+ boats on the water, the red boats are on your waterways and ready to help at a moments notice.

**Getting You Back Safely is Our #1 Goal –  
GET UNLIMITED TOWING TODAY!**

**BoatUS.com/Towing**  
**800-395-2628**



Details of services provided can be found online at [BoatUS.com/Agree](http://BoatUS.com/Agree). TowBoatUS is not a rescue service. In an emergency situation, you must contact the Coast Guard or a government agency immediately.

# ANNAPOLIS CRUISAIR, INC.

Family Owned & Operated for Over 50 Years

**SALES • SERVICE • INSTALLATION**



**U-LINE**  
U-Line Icemakers  
110/115vAC

We will meet or beat  
any competitive  
price quote for  
these products!

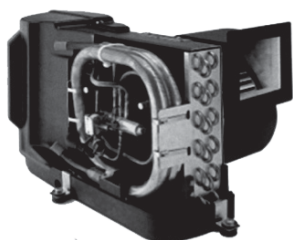


Marine Diesel  
Heaters

**Espar**

**Cruisair®**

New Turbo  
Air Conditioners • Heat Pumps



• We Have • BREATHE EASY AIR FILTERS

**Sentry™**  
*Cruisair*

BATTERY  
CHARGERS



SAFEST  
CHARGER  
ON THE  
MARKET!

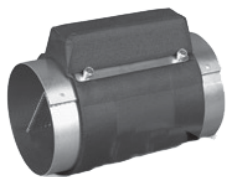
**Eskimo Ice  
600 Ice Pump**

Provides up to 600 lbs. of fresh  
ice in a day from your ships  
water tank.



**STINKY BOAT?**

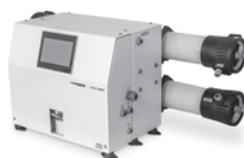
We Have **NEW**  
Breathe Easy  
Air Purifiers



➔ **DOMETIC**

**SPOTZERO®**  
Fresh Water Reverse Osmosis

**Water Purification Systems**



**Vitrifrigo**  
REFRIGERATORS

**WAECO**  
**Adler/Barbour®**



MARINE AIR SYSTEMS®

**AIRRRRRRRRR**

by Dometic GROUP



**KOHLER.**

- Generators -



**Fischer Panda**

**Onan**

2124 Renard Ct. • Annapolis, MD

(410) 224-0970 • (410) 974-6136 • Fax (410) 224-0050

[www.annapoliscruisair.com](http://www.annapoliscruisair.com)



*Escape  
Unplug  
Unwind*

# ATLANTIC CITY IN-WATER POWER BOAT SHOW®

September 8-11, 2022

GOLDEN NUGGET CASINO HOTEL | FARLEY STATE MARINA

**\$15 tickets in advance**  
FREE SELF PARKING



[www.acinwaterboatshow.com](http://www.acinwaterboatshow.com)



# ADVERTISERS INDEX

AC BOAT SHOW .....	15	GOOTEE'S MARINE .....	7
ALMARS .....	9	J.J. BEST BANC & CO. ....	17
ANCHOR BOATS .....	24	MIDLANTIC MARINE CENTER	11
ANNAPOLIS CRUISAIR .....	14	PARISH CREEK LANDING .....	4
BOAT LIFTS UNLIMITED .....	16	RUDY MARINE .....	5
BOAT US .....	12	SCOTT'S COVE MARIA .....	2
CLARKS LANDING .....	10	UPPER CHESAPEAKE YS .....	3
CURTIS STOKES .....	8, 22	US POWERBOAT SHOW .....	12
DANNY'S MARINE .....	7	YACHTX .....	6
GOLDSBOROUGH'S MARINE ...	4	WATERFRONT .....	23

## THE LARGEST LOW PROFILE BOAT LIFT MANUFACTURER IN THE USA

**CALL  
US FOR  
YOUR LOCAL  
DEALER!**



### Choose The Right Boat Lift, Choose

## MAGNUM

### BOAT LIFTS

Personal Watercraft Lifts

- Low Profile Design • Low Maintenance • 2/5 Yr Warr.
- Outside Walkway • Galvanized Steel Construction
- Aluminum Cradles Available • Capacity 800-40,000 lbs. [www.magnumlift.com](http://www.magnumlift.com)

Fully  
Insured

## BOAT LIFTS UNLIMITED

**410-674-3100 • 1-800-268-5911**

**WE SERVICE  
MOST MAKES  
OF BOAT  
LIFTS!**

Located in Odenton, MD, this full-service boat lift manufacturer has a network of over 180 distributors serving the Chesapeake Bay, Great Lakes and Atlantic Coast with Magnum Boat Lifting Products. Boat Lifts Unlimited is dedicated to customer satisfaction through prompt, courteous service on most existing boat lifts and timely installation of new boat lifts. Quality materials, attention to detail and innovative design have made Boat Lifts Unlimited one of the largest boat lift manufacturers in the U.S.



**JUST BUY IT. And, Enjoy More to Life!**  
**Let J.J. BEST Provide You Financing & Insurance!**



**100% Financing Available, Quick Approvals Very LOW RATES, LONG TERM Programs & No Prepayment Penalties. We offer Insurance too!**

**Get Pre-Qualified NOW at [JJBESTBOATLOANS.COM](http://JJBESTBOATLOANS.COM)**

**OR, CALL NOW 1-800-USA-1965**

Estimated APR based on 5 year loan term; individual rate may vary based on loan amount, loan term, boat use, model year and type of boat. Subject to consumer loan program requirements and credit approval. Rates and terms are subject to change based on market conditions and borrower eligibility. Certain fees, closing costs, and restrictions may apply. APR applied to the loan is the APR in effect on the date your application is received and is valid for 30 days. Minimum loan amount for pleasure use is \$10,000 in all states. J.J. Best Banc & Company is not a bank. J.J. Best Banc & Company operates under the name J.J. Best & Company.

# FREE LISTING WITH PHOTO ON THE INTERNET

## PRIVATE AD RATES

- ☐ INTERNET ONLY UP TO 1 YEAR..... \$49<sup>00</sup>  
☐ 3 ISSUES NO PHOTO CLASSIFIED..... \$59<sup>00</sup>  
☐ 3 ISSUES WITH COLOR PHOTO  
 WITH COLOR PHOTO ON INTERNET..... \$69<sup>00</sup>  
☐ INTERNET FEATURE ADD ON 4 WEEKS  
**AVAILABLE WITH AD PURCHASE ONLY!**  
 ON THE SALTY DOG HOME PAGE..... \$49<sup>00</sup>  
☐ FRONT COVER..... \$40<sup>00</sup>  
☐ FACEBOOK FEATURE..... \$15<sup>00</sup>  
☐ PUBLICATION MAILED TO YOU..... \$2<sup>00</sup>

## TOTAL

### FRONT COVERS ARE BASED ON AVAILABILITY

- ☐ CHECK ☐ MONEY ORDER ☐ DISCOVER  
☐ MASTERCARD ☐ VISA ☐ AMERICAN EXPRESS

CC#

Expiration Date \_\_\_\_\_ Security Code \_\_\_\_\_

Advertiser's Name .....

Address .....

Phone .....

Where did you pickup "The Salty Dog"?

Store

Town

Fill out the description form below, **up to 125 characters (including spaces & punctuation) of advertising**. Please put one character per space beginning with the motor. Include a check, money order or credit card, and mail to us with a good quality COLOR photograph of your boat. Photos will only be returned if accompanied by a self-addressed stamped envelope.

## AD COPY

FT. \_\_\_\_\_ YR. \_\_\_\_\_

MANUF. / MODEL \_\_\_\_\_

MOTOR \_\_\_\_\_

ACCESSORIES \_\_\_\_\_

LOCATION OF BOAT \_\_\_\_\_, \_\_\_\_\_  
City State Zip Code

PRICE \_\_\_\_\_

PHONE # \_\_\_\_\_

EMAIL \_\_\_\_\_

**Send to: The Salty Dog**  
**254 Brick Blvd • Suite 1**  
**Brick, NJ 08723**

# 888-843-1585

Fax (732) 477-9000 • Email: [info@thesaltydog.com](mailto:info@thesaltydog.com)

No refunds after Ad is processed. • Advertiser will be responsible for \$20 fee on returned checks.

**YOUR BOAT LISTING CAN ALSO BE SUBMITTED ON THE INTERNET [www.thesaltydog.com](http://www.thesaltydog.com)**

## SPECIAL FEATURES

UPCOMING BOAT SHOWS..... Pgs. 12, 15  
 PRIVATE BOAT ADS ..... Pgs. 19-21

## SUBSCRIPTION CHESAPEAKE BAY

SALTY DOG is published Bi-weekly 25 times a year.

Papers are mailed **FIRST CLASS**. Your first issue will be mailed within 1 week.

To subscribe, just fill in the amount of issues and multiply by \$2.00\*

No. of issues \_\_\_\_\_ x \$2.00\* = Total Cost \_\_\_\_\_

☐ CHECK ☐ MONEY ORDER ☐ MASTERCARD ☐ VISA

Credit Card No. \_\_\_\_\_

Exp. Date \_\_\_\_\_

Signature \_\_\_\_\_

Name \_\_\_\_\_

Address \_\_\_\_\_

City \_\_\_\_\_ State \_\_\_\_\_ Zip \_\_\_\_\_

Telephone \_\_\_\_\_

\*Canada Subscription Add 10% - Bermuda Subscription Add 30%  
 Outside the Continental USA Add 50% • Credit Cards Only Outside USA


**Mail To: THE SALTY DOG, 254 Brick Blvd • Suite 1, Brick, NJ 08723**


A Bi-weekly Publication for  
 Powerboats, Sailboats, Marine  
 Equipment, Supplies, Services,  
 Waterfront and Photo Ads

**For More Info on Display Ads or Internet Listings**
**Call 888-843-1585 • Fax (732) 477-9000**
**[info@thesaltydog.com](mailto:info@thesaltydog.com) • Mon.- Fri. 9:00 am to 4:00 pm**



## See Color Photo on the Internet



**38' 2004 CIGARETTE TOP GUN TWIN STEP**, T/525 EFI, Bravo XR drives, 600 hours, 125 hours since rebuilds, OFFERS CONSIDERED!, \$139,900, 609-693-9423  
tidesendmarina1@gmail.com 156293

## See Color Photo on the Internet



**32' 2021 BOSTON WHALER 325 CONQUEST**, T/Mercury 300hp Verados, electronics, 169 hours, loaded, \$444,900, 631-327-0843 stoneharboryachts@gmail.com 154072

## See Color Photo on the Internet



**SeaSwirl 2901 Year 2005**

29' 2005 SEASWIRL 2901  
Yamaha 4-strokes, only 480 hours  
\$77,900, 908-489-5098

154796

## See Color Photo on the Internet



**36' 2002 SPECTRE CAT**, Twin 500hp Mercruisers, low hours, extremely well kept, immaculate condition, trailer included, \$89,995, 732-864-6937 jeremypeters2002@gmail.com 153768

## See Color Photo on the Internet



**31' 2017 CHAPARRAL 310 SIGNATURE**, T/Mercruisers, 125 hours, gen, Joystick, thrusters, electronics, loaded, better than new, \$239,900 OBO, 917-817-5084 info@deepwaterlanding.com 156294

## See Color Photo on the Internet



**29' 1984 CRUISERS Avanti Vee 296**, Mercruiser 5.0L 305 230hp IB, Gen/Detailed Maint log. New Anchor Windlass & tackle/VHF. Newer Garmin, \$19,750, 843-412-5253 Ryonn.Taylor@comcast.net 156425

## See Color Photo on the Internet



**36' 1987 SILVERTON convertible**, T/350 Crusader CID 270hp, excellent condition, runs very good, full enclosure, bottom paint 8/21, new sea pumps, FWC, Price Reduced \$18,000, 410-365-0318 gseacurty@aol.com 153759

## See Color Photo on the Internet



**31' 1982 BERTRAM 31**, Cummins 6BTA 270hp Diamond Series, custom hardtop w/rocket launcher, Rupp double spreader ORs & rigged Eisenglass wraparound, elecs, \$129,000, 732-899-8010 sales@schraderyachts.com 155559

## See Color Photo on the Internet



**Regulator 29FS 2007**

29' 2007 REGULATOR 29FS  
repowered 2011 Yamaha 300s, 987 hours, super clean  
908-489-5098

154797

## See Color Photo on the Internet



**32' 2006 TOPAZ EXPRESS**,  
T/Cat C7 460hp, 2200 hours,  
400 gallon fuel, 25 MPH,  
Furuno Navnet equip,  
new cushions  
& carpet, Onan 5kw gen,  
serious inquiries only  
**\$169,999**  
**732-547-5045**  
**frostheatandair@aol.com**  
153914

## See Color Photo on the Internet



**2014 Seahunt**

**30' 2014 SEA HUNT 30 GAMEFISH**  
T/300hp Yamahas, 490 hours  
\$149,500, 908-489-5098

154798

## See Color Photo on the Internet



**Grady 282 year 2005**

**28' 2005 GRADY-WHITE 282**  
Yamaha 4-stroke  
\$69,500, 908-489-5098

154794

## See Color Photo on the Internet



**30' 2005 GRADY-WHITE 300 MARLIN**, Twin Yamaha F250s, new canvas enclosure & outriggers, \$129,900, 732-899-8010 sales@schraderyachts.com 155529

## See Color Photo on the Internet



**28' 1990 SEA RAY 280 Sundancer**, T/Mercury V-6, VHF, Garmin GPS, DF, Fridge, Microwave, FW tank, 120 Gal fuel, Full Canvas, Clean and Dry Cabin, Marina Maintained, \$17,900, 908-309-4016 almarina1@gmail.com 154766

## See Color Photo on the Internet



**29' 2007 TRITON 2895CC**, T/Verado 250s, 2 Furuno Navnet displays w/radar/sonar/CP, VHF radio & Bluetooth head unit, LED lights & rod holders everywhere, \$78,000, 202-468-4228 asantos@blueridgeinc.info 156274

## See Color Photo on the Internet



**282 Mako 2006**

**28' 2006 MAKO 282**  
only 130 hours, \$20K in upgrades in 2021  
908-489-5098

154795



## See Color Photo on the Internet



27' 1992 BOSTON WHALER 27 OFFSHORE, New T/Honda 225hp ('13), new fuel tanks ('13), 580 engine hours, 270 gal fuel, offshore elec, ready to fish, \$72,500, 917-817-5084 info@deepwaterlanding.com 156325

## See Color Photo on the Internet



25' 2014 BOSTON WHALER OUTRAGE 250 like new \$139,000, 908-489-5098 154792

## See Color Photo on the Internet



## Grady Dolphin 251

25' 1994 GRADY-WHITE 251 DOLPHIN clean \$19,500, 908-489-5098 154791

## See Color Photo on the Internet



27' 1994 CHAPARRAL Signature 27, White and Teal cabin cruiser w/454 Mercruiser engine and outdrive. Looks good/runs great! 3-axle trailer included., \$11,000, 240-298-2799 mosleykazoku@hotmail.com 155600

## See Color Photo on the Internet



25' 2019 SPORTSMAN 252 OPEN, Yamaha F300 UCA, 12" Garmin MFD w/radar, outriggers, windlass, livewell, underwater lights, \$119,900, 732-899-8010 sales@schraderychts.com 154578

## See Color Photo on the Internet



25' 1998 SEA RAY 250 SUNDANCER, V8 Mercruiser, Bravo III, full canvas enclosure, bimini, \$18,000, 732-899-8010 sales@schraderychts.com 155616

## See Color Photo on the Internet



26' 2000 GRADY-WHITE 265 Yamaha 4-strokes, only 380 hours \$69,500, 908-489-5098 154793

## See Color Photo on the Internet



25' 2012 CHRIS CRAFT LAUNCH 25 HERITAGE EDITION, Mercruiser 8.2L, 460 hours, \$99,500, 732-899-8010 sales@schraderychts.com 154835

## See Color Photo on the Internet



24' 2007 PRO-LINE Center Console, 250HP Mercury OB, livewell, GPS/radar, stereo, outriggers, custom enclosure, covers, stereo, new upholstery, professionally maintained, low hrs, \$30,000, 908-510-7468 ryan@arshelps.com 156423

## See Color Photo on the Internet



26' 2004 CHAPARRAL 260 BR, Merc 496 MPI FW I/O, Bili, dual batteries, Fire Boy fire suppression sys, marine head, cockpit table, ski tow bit, FW sink & cockpit shower, Standard Horizon VHF & bimini, \$30,000, 732-899-8010 sales@schraderychts.com 155560

## See Color Photo on the Internet



25' 2009 GRADY-WHITE 257, Yamaha, Well-equipped, \$66,900, 732-977-7964 rmarra54@verizon.net 156421

## See Color Photo on the Internet



24' 2004 CHAPARRAL SIGNATURE, 5.0L Volvo Penta, 360 hours, FF, GPS, well cared for & it shows, in water, \$24,000, 609-287-2283 bhow127@aol.com 156446

## See Color Photo on the Internet



26' 1990 SHAMROCK CENTER CONSOLE, 351 Ford IB, replaced 2011 risers & manifolds 2021 NO STERN DRIVE, t-top, tandem axle trailer, \$14,965, 443-553-3982 jmswoody@yahoo.com 156445

## See Color Photo on the Internet



25' 2008 CHRIS CRAFT LAUNCH 25 HERITAGE EDITION, Merc 496 FWC Seacore V8, Bili, new covers, new Garmin GPS/DF, \$64,900, 732-899-8010 sales@schraderychts.com 156292

## See Color Photo on the Internet



## 24' 1989 GRADY-WHITE OFFSHORE 24,

1999-225 Evinrude (214 hrs.), EZ Loader trl w/brakes ('24 tags), Strongarm elec wench, 190qt fish box & live bait, canvas/wind/foor helm, toilet, 1-2 bunk \$17,000 302-893-5640 ara@arailustrated.com 155875

## See Color Photo on the Internet



## Steiger 25DV Miami

25' 2020 STEIGER CRAFT 25DV MIAMI 150 hours mint \$149,500, 908-489-5098 154790

## See Color Photo on the Internet



25' 2008 CHAPARRAL 256 SSI, Volvo I/O, new transom assembly, 165 original hours, ready to go! MAKE OFFER! \$36,900, 917-817-5084 info@deepwaterlanding.com 155615



## See Color Photo on the Internet



24' 1998 SHAMROCK 246 CC, 350 Chevy, Recent Repower, new furuno FF, 1KW transducer, dual axle trailer, boat in water and ready to fish, Runs well, \$14,900, 732-551-4908 tomholowchuk@gmail.com 156424

## See Color Photo on the Internet



22' 2001 CENTURY DUAL CONSOLE, 200hp Yamaha SWS, bimini, new Garmin, new canvas, new cushion upholstery, bottom paint, Bluetooth stereo, trailer, \$18,500, 732-948-6003 jshank925@gmail.com 154952

## See Color Photo on the Internet



**19' 2002 BAYLINER  
150 BR,  
3.0 L Mercruiser I/O  
with second gen  
Alpha drive  
\$8,500**

**Call Gary 732-766-3011  
maurer825@gmail.com**

155874

## See Color Photo on the Internet



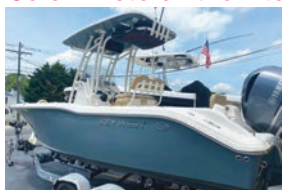
23' 2020 GRADY-WHITE 236 FISHERMAN  
Yamaha 300, only 50 hours  
\$149,500, 908-489-5098

156789

21' 1955 CHRIS CRAFT  
CAPRI,

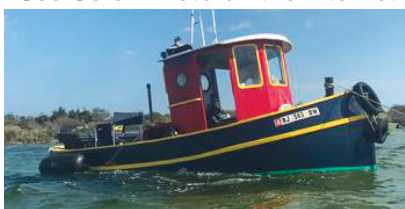
283 V8, fully restored,  
rebuilt motor, transmission,  
5200 bottom, cleaned gas tank,  
new carburetor  
**\$35,000**  
**908-399-0853**  
**ssmarkert@hotmail.com**

## See Color Photo on the Internet



23' 2018 KEY WEST 239FS, 2018 Yamaha FD250X-CA, 51 hours, \$79,595, 848-232-4292 sales@allpointsmarineservices.com 155492

## See Color Photo on the Internet



**20' 1983 CUSTOM  
BUILT MINI TUGBOAT,**  
custom wood/FB 20hp Diesel  
Yanmar keel cooled dry stack  
exhaust inc trailer, in water,  
**JUST REDUCED! \$14,000**  
**609-519-3583**  
**harbornj@yahoo.com**

153457

## See Color Photo on the Internet



**18' 1998 PARKER  
CENTER CONSOLE,**  
Yamaha 130hp 2-stroke, t-top,  
rocket launcher, spreader light,  
electronics, SS bow rail, salt water  
washdown, 3 blade SS prop,  
forward console seat w/cushion,  
cooler seat w/cover  
**\$14,900**  
**732-899-8010**  
**sales@schradyachts.com**

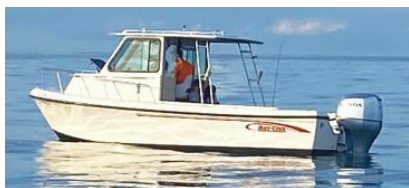
155561

## See Color Photo on the Internet



23' 2019 STINGRAY 234LR, Yamaha F200, ski tower,  
tow bar, livewell, boat cover, \$59,900, 732-899-8010  
sales@schradyachts.com 156291

## See Color Photo on the Internet



23' 2001 May-Craft 2300 PILOTHOUSE, 2019 150hp Honda  
w/warranty til July 2024, low hours, radar, GPS, trailer,  
**\$32,000 OBO, 917-817-5084 info@deepwaterlanding.com 155363**

## See Color Photo on the Internet



20' 1994 HUETHER GARVEY, 2004 Mercury 90jp 4-stroke,  
Garmin GPS/DF, compass, Kobelt control, Sea Star hydraulic  
steering, 2 batteries, \$4,000, 443-521-0609 rich.7119@yahoo.com 155622

## See Color Photo on the Internet



16' 2016 Crestliner 1650 DISCOVERY, side console,  
Mercury 50hp, 3 batteries, full cover, FF, trolling motor, 37  
hours, like new, \$15,900, 908-309-4016 almarmarine1@gmail.com 154951

## See Color Photo on the Internet



23' 2008 SUGAR SAND OASIS AIRWAVE, 250hp Opti Jet  
Drive, tower, bimini, snap in carpet, table, full cover, new wiring &  
SS impeller (21), 280 hrs, \$17,900 OBO, 908-309-4016 almarmarine1@gmail.com 156290

## See Color Photo on the Internet



19' 2001 CHAPARRAL Sport SSI, clean condition,  
240 hrs on engine 250 Volvo Penta engine, comes with  
Gator trailer, \$20,000, 443-856-8700 thyen1318@gmail.com 154701

## See Color Photo on the Internet



16' 1984 PEA POD, 2hp Honda, great little cruising  
boat, dark blue, \$6,500, 732-899-8010 sales@schradyachts.com 156326

# Thinking of buying a yacht or boat?

Your best online search option is

**CurtisStokes.net**



Worldwide Yacht Sales | Yacht Charters | New Yacht Construction

Annapolis, MD • Rock Hall, MD • St. Michaels, MD • Delaware City, DE • Deltaville, VA

Telephone: 410.919.4900 • Email: [info@curtisstokes.net](mailto:info@curtisstokes.net)





# WATERFRONT MARINE

#1 GOLL AVE, SOMERS POINT, NJ ~ 609-926-1700

281 PRINCETON AVE, BRICK, NJ ~ "Featuring Chaparral & Carver" 732-202-6961

2822 SOLOMON'S ISLAND RD, EDGEWATER, MD ~ 443-949-9041

Premium Brands ~ Exceptional Service

[WWW.WATERFRONTMARINE.COM](http://WWW.WATERFRONTMARINE.COM)

**INBOUND BOATS AVAILABLE FOR FAST DELIVERY • CALL TODAY FOR DETAILS!**



**INCOMING!**



287 SSX



23 LSB

**INSTOCK!**

## - PREOWNED BOATS -



Located in Somers Point

2018 Robalo R207 Dual Console • Mercruiser 4.3L MPI 220hp, trailer • \$49,900



Located in Somers Point

2022 Robalo R360 Center Console • Triple Yamaha F300, lift kept • \$604,900



Located in Somers Point

2021 Chaparral 23 SSi OB Yamaha F200, trailer, \$74,900

## 2022 Contender 44 ST



Factory Demo!

Triple Yamaha 425 XTO's, electronics, Sea Keeper, loaded w/options & features, new warranties, Available for Immediate Delivery! Call Today for Pricing!

### BOWRIDERS & PONTOONS

30' '16 Chaparral 307 SSX, T/Volvo 300hp I/O .....	\$189,000
30' '14 Chaparral 307 SSX, T/Volvo Penta 300DP, joystick .....	\$139,900
28' '20 Chaparral 280 OSX, T/Yamaha F200, 110 hrs .....	\$189,900
28' '12 Chaparral 284 Sunesta, Volvo Penta 8.1 400 DP .....	\$73,900
26' '14 Chaparral 264 Sunesta, Volvo Penta 320DP, 62 hrs .....	\$74,900
26' '10 Sea Ray 260 Sundeck, Mercruiser 350 Mag BIII .....	\$59,900
26' '17 Crownline E6 XS Bowrider, Yamaha F300 .....	\$69,000
25' '16 Chaparral 250 Suncoast, Yamaha F300, lift kept .....	\$72,500
25' '08 Chaparral 250 Signature, 8.1L Volvo, 461 hrs .....	Pending
25' '20 Chaparral 257 SSX, Volvo Penta V8 350 DP .....	Pending
24' '18 Chaparral 246 SSi, Volvo Penta 300hp .....	\$72,500
23' '21 Chaparral 23 SSi OB, Yamaha F200, trailer .....	\$74,900
23' '08 Cobalt 232 Bowrider, Volvo Penta 300 320DP, trl .....	\$38,700
23' '02 Cobia 236 Coastal Deckboat, Yamaha 200hp OX66 .....	SOLD
23' '12 Sea Pro 239 DLX .....	SOLD
22' '14 Chaparral 224 Sunesta, Volvo Penta 270hp .....	\$44,900
22' '18 Bennington 22 SSRX, Yamaha F150, low hours .....	\$49,300
22' '04 Sea Ray 220 Sundeck, Mercruiser 260hp .....	SOLD
21' '18 Chaparral 21 SSi, Mercruiser 4.3L MPI 220hp, trailer .....	\$48,800
21' '18 Chaparral 21 H2O Sport BR, Merc 4.3L MPI 220, trl .....	\$49,900
20' '17 Regal 2000 ES Bowrider, Volvo Penta, 40 hours .....	\$44,900

### CRUISERS & CUDDY CABINS

33' '12 Chaparral 330 Signature, T/350hp Mags .....	SOLD
32' '15 Regal 32 Express, T/Volvo Penta I/O, loaded & clean .....	\$197,500
25' '08 Chaparral 250 Signature, 8.1L Volvo, 461 hrs .....	SOLD

### FISHING BOATS

36' '22 Robalo R360 CC, Triple Yamaha F300, lift kept .....	\$604,900
27' '19 Robalo R272, T/Yamaha F200, loaded .....	SOLD
24' '21 Robalo R242 CC, T/Yamaha F200, trolling motor .....	\$133,000
24' '18 Robalo R242, Yamaha F300, low hours .....	SOLD
24' '06 Robalo R245 WA Cuddy, T/Yamaha F150 OB .....	SOLD
23' '20 Key West 239DFS DC, Yamaha F250m 20 hrs, trailer .....	\$82,900
22' '21 Robalo R227 DC, Yamaha F200 .....	\$66,900
20' '18 Robalo R207 DC, Yamaha F150 .....	\$49,900
20' '19 Robalo R202 Explorer, Yamaha F150, 35 hrs, NBP .....	SOLD
20' '17 Robalo R200ES, Yamaha F150, 127 hrs .....	SOLD
18' '06 McKee Craft 184 CC, Yamaha F115 motor .....	\$17,900
18' '17 Robalo R180, Yamaha F115, t-top, trailer .....	Pending



AUTHORIZED  
PARTS &  
SERVICE

**MERCURY**  
MerCruiser



**YAMAHA**  
When you want the best

**VOLVO PENTA**



Full Service  
Marina w/Slips &  
Racks Available!



# BUY NOW & ENJOY YOUR BOAT FOR THE SUMMER!

## OPEN 7 DAYS A WEEK



**FOUR WINNS**



**KW**  
**KEY WEST**



**Scout**  
Discover More...



**Great Selection of  
Pontoons In Stock!  
Call for Info!**



**G3 Boats**



**Need a Trailer?  
We Have Them  
In Stock!**

**YAMAHA** BUILT TO LAST

# 410.287.8280

**ANCHOR**  
**BOATS**  
*North East, Maryland*

[www.AnchorBoat.com](http://www.AnchorBoat.com)

448 MAULDIN AVE | NORTH EAST, MD 21901

**Parts & Service**  
**General Boat Repairs**  
**High & Dry Boat Storage**