

Free!



The Salty Dog[®]



CHESAPEAKE BAY EDITION

Published Every Other Week • Distributed in Maryland, Delaware, Southern Pennsylvania and Virginia

POWERBOATS & SAILBOATS ...Including Marine Services



31' 2004 RINKER FIESTA VEE 312, T/350hp Volvos, New A/C, upgraded outdrives, fresh water cool, well maintained, good condition! **\$39,900, 703-675-0058, Justmyboat@gmail.com 153052**



32' 2007 PURSUIT OFFSHORE 305, T/250hp Merc Verados, 760 hrs, AC/HT, sleeps 4, mico, stove, fridge, full head, live baitwell, ORs, loaded, well maintained, **\$130,000, 732-814-0024, j_fasano@yahoo.com 152969**



NEW 2021 29' JEANNEAU NC 895 SPORT, Twin Yamaha, loaded In Stock! • Call for Price **302-945-2254 • anita@rudymarine.com**



27' 1993 ALBEMARLE 27SF, GM 350 Marine, 330 hrs, since new engines, (2) Raymarine 12" displays 1 Lowrance 7", FF, 285 gal gas, AP, AC, micro, tower, outriggers, **\$29,500, 410-829-0311, cl60pilot@msn.com 149912**

**List Your Boat
As Low As \$49!**

**Go to www.thesaltydog.com
to get started!**

Private Boat Ads Only



22' 1990 RHODES, refurbished 2016 with 2016 galv trailer and Yama OB, Intermast furling main, furling 130 genoa & more, **\$16,500 410-647-2755 jschroll@msn.com 152520**



2022 28' COBIA 280 CENTER CONSOLE Twin Yamaha F200hp, \$Call • **302-436-1737 captain_glen@rt113boatsales.net**



40' 2001 SEA RAY 400 SEDAN BRIDGE, 430 Cummins, low hours, loaded with accessories, **\$169,900, 717-626-2680, fmi@dejazzd.com 152352**



2019 29' JEANNEAU 9.0 LEADER CC T/250hp Yamaha 4-stroke, 35 hours, trailer, **\$159,995 • 302-945-2254 anita@rudymarine.com**

Annapolis, MD • St. Michaels, MD
Deltaville, VA • Woodbridge, VA
Delaware City, DE

CONTACT US TODAY!

**info@curtisstokes.net
410.919.4900**

**CURTIS
STOKES
& ASSOCIATES**

www.curtisstokes.net

1-888-843-1585 • Private Boat Information on Page 18

Rt. 113 Boat Sales and Service

Selbyville, DE 302-436-1737
www.Rt113BoatSales.net



YAMAHA

TAX FREE

f YouTube



We have Boats Available with Special Order Discounts of up to \$20,000

COBIA from 20 - 35 ft.

Just Better Built in Every Way!

Your EXCLUSIVE Dealer
ALL OF MD, DE AND PARTS OF VA

Boats Available with Special Order Discounts & Pre-Price Increase*

- Cobia 220 CC powered by a F200 Yamaha
- Cobia 262 CC powered by a Twin F150 Yamaha
- Cobia 280 CC powered by a Twin F200 Yamaha
- Cobia 280 DC powered by a Twin 250NSB Yamaha
- Cobia 320 CC powered by a Twin XF425 Yamaha
- Cobia 330 DC powered by a Twin XF425 Yamaha
- Cobia 350 CC powered by a Triple F300 Yamaha

*** Get your new boat THIS YEAR and beat the turn of the year Price Increase Guaranteed!**



PATHFINDER from 20 - 27 ft. **ANGLER DRIVEN**

Brokered Boats WANTED!
Clean, Late Models up to 35 ft. LOW FEES - GREAT RESULTS!

GARMIN
AUTHORIZED RESELLER

Certified Installer

BOAT TRAILERS AT WHOLESALE PRICING!

Tidewater TRAILERS

Now is the Best Time to CASH OUT!

We handle Funding, Payoff, National MLS and Transport-Delivery to Anywhere in the USA

Get your Boat Sold FAST and for Top Dollar!

Clean late models, years 2005 and up powered with Yamaha Outboard Motors

RT113BoatSales.net

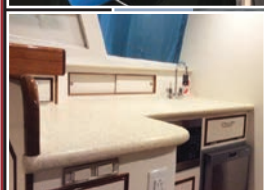
HAUL OUT AND TRANSPORT SERVICES AVAILABLE

Upper Chesapeake Yacht Sales

John Curry • (610) 299-3598
www.upperchesapeakeyachtsales.com



31' 2013
Bertram Custom
Sportfish
\$395,000



One of the absolute finest 31' Bertram re-manufactured boats built by renowned Worton Creek Marina. The hull is a 1963 rock solid Bertram that was meticulously restored in 2013 at a cost in excess of \$500,000 and has been kept in a covered shed since completion now having approximately 160 hours on her Yanmar diesels. This is a must see for the discriminating Buyer looking to purchase a great fishing and cruising vessel that may also be considered a maritime "work of art". Boat truly shows as new!



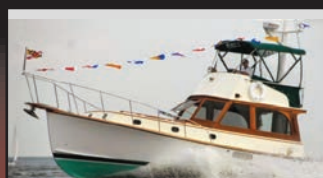
62' '03 Bruce Roberts Expedition Trawler,
loaded and mint • **\$1,399,900**



40' '81 Bristol Sloop,
diesel, mint, classic,
\$55,000



37' '95 Sea Ray Sundancer, T/7.4L,
gen, AC • **\$64,900**



36' '78/'07 Jarvis Newman FB,
\$500 refit, 330 Cummins, gen,
AC, mint • **\$134,500**



28' '74 Bertram FB,
newer 315 Inboards, AC,
clean • **\$24,900**



Reduced!

27' '02 Rinker 270 Fiesta Vee, new engine & Bravo III, trailer available, very nice • **\$31,900**



27' '17 Scout 275 Dorado,
T/200hp Yamahas, loaded,
trailer, mint • **\$159,900**



22' '95 Sea Ray Weekend,
5.7L Merc, trailer, excellent
condition • **\$12,900**



15' '06 Key West Center Console, Yamaha 4-stroke,
trailer, mint condition
\$10,900

56' '04 Carver Voyager PHMY, T/675hp Volvos, loaded and mint Pending
34' '04 Rinker 342 Fiesta Vee, T/280hp Volvos, gen, AC, nice Pending



Expect The Same
Superior Service From Our
Brokerage That You Get
From Our Marina

BOAT SALES & BROKERAGE
• **Financing & Insurance Available •**

WORTON CREEK MARINA

23145 Buck Neck Road • Chestertown, MD 21620

(410) 778-3282



WANT TO SELL YOUR BOAT FAST?

A successful brokerage program starts with exposure. Due to our size, Clarks Landing can offer more exposure than most other brokers.

Our experienced, dedicated team handles the entire transaction, including financing, marketing, demonstration rides, haul outs, estimates & more.

List your boat where it is or at one of our facilities.



**2016 Sea Ray
510 Flybridge
New Listing
Low Hours**



**2015 Pursuit 385
Offshore
\$334,900**

**IN TODAY'S MARKET, YOUR BOAT WILL
NEVER BE WORTH MORE THAN IT IS
RIGHT NOW. OUR EXPERIENCED BROKERS
WILL SELL YOUR BOAT FOR TOP DOLLAR.**

Get A Free Market Analysis

www.ClarksLanding.com

- ✓ Reduced Commissions
- ✓ Free Land Storage Program
- ✓ Huge Marketing Budget
- ✓ Family-Owned over 40 Years
- ✓ **Free Drone Media Package
for Listings over \$150K**

LIMITED INVENTORY!!! Buy Now & Cruise Later!

Scan QR Codes with Your Phone's Camera for Details & Video Tours



on the Manasquan River
847 Arnold Avenue
Point Pleasant, NJ

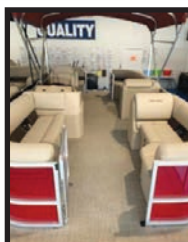
WE HAVE BOATS, MOTORS & TRAILERS IN STOCK!

Bentley



IN STOCK

2022 20' Bentley 20 Cruise
90hp Yamaha



IN STOCK

2022
20' Bentley LE
90hp Yamaha



IN STOCK

2022 22' Bentley Rear Fish
115hp Yamaha



IN STOCK

2022 Bentley 223 Navigator
150hp Yamaha



IN STOCK

2022 22' Bentley Rear Lounge
115hp Yamaha



JEANNEAU



IN STOCK

7.5 Leader • 250hp Yamaha



VIAGGIO



IN STOCK

2022 Diamante D 23 S
Yamaha power



IN STOCK

2022 Lago L 22 U
Yamaha power



IN STOCK

2022 Lago L 20 C
Yamaha power



IN STOCK

2021 22R Triple
Tube • 150hp



IN STOCK

2021 22R
115hp Yamaha



2 IN STOCK

2100 • 150hp • 200hp • 250hp

ALL BOATS POWERED BY



YAMAHA



Delaware has
NO SALES TAX!
3 GREAT LOCATIONS!



REPOWER HEADQUARTERS



302-945-2254 • 32606 DuPont Blvd Dagsboro, DE 19969
302-999-8735 • 411 S. Maryland Ave. (Rt 4) Wilmington, DE 19804
443-995-3785 • 3033 Kent Narrows Way South, Suite 3 Grasonville, MD 21638





YAMAHA

Revs Your Heart®



Beacon Light Marina

825 Bowleys Quarters Rd. | Middle River, MD 21220

410-335-6200

beaconlightmarina.com | sales@beaconlightmarina.com

**WITH SO MANY WAYS TO HAVE FUN ON A YAMAHA,
*It's easy to find yours at Beacon Light Marina***



ALMARS

We Are A Full Service, Premier Mercury Outboard Repair Center! Let Our Certified Mercury Technicians Service Your Mercury Motor Needs!

LEFTOVER VERADO SALE!

CALL FREQUENTLY FOR UPDATED INVENTORY!

MOTORS ARE ARRIVING DAILY!



225hp
black • \$14,995



250hp
black • \$15,995



300hp
black • SOLD



300hp
white • \$18,995



350hp
Call for Great Deal!



350hp
Call for Great Deal!

We Now Offer
INJECTOR SERVICE
with
ONE Day Turnaround!



150
4-stroke
Black



150 ProXS
4-stroke
Black



175XL ProXS
4-stroke
Black



200
Sea Pro
Black



225XL
4-stroke
Black



250 XL
4-stroke
White

100's of Used Cowllings In Stock!
Call for Availability!

250XL PRO VERADO 15,995
Only 1 Available

REMANUFACTURED OUTBOARD ENGINE SALE!

90hp - 250hp 2 Year Warranty

Starting As Low As \$5,495 Call for Details!

CALL US FOR GREAT DEALS ON NON-CURRENT POWERHEADS!

Call us for current pricing new current and noncurrent outboards
NO SALES TAX IN DELAWARE!

701 Washington St., New Castle, DE

302-328-8541

www.almarsoutboards.net

HOURS: Monday - Friday: 8am - 5pm
CALL FOR GREAT PRICING ON NEW & USED MERCURY OUTBOARDS

NO HIDDEN COSTS
NOT RESPONSIBLE FOR TYPOGRAPHICAL ERRORS



All prices good while supplies last!

Pricing includes all rebates.

Thinking of buying a yacht or boat?

Your best online search option is
CurtisStokes.net



Worldwide Yacht Sales | Yacht Charters | New Yacht Construction

1.855.266.5676 | 410.919.4900 | info@curtisstokes.net

CAROLINA SKIFF

23 Ultra



SEA CHASER
By: Carolina Skiff, Inc.

24 HFC



Powered by:



DANNY'S MARINE
(410) 228-0234 • www.dannysmarine.com
Located on US Rt 50 (mile marker 86) • Chateau Drive near Linkwood, MD
dannysmarine@comcast.net

Limited Time Offers. Not all models qualify. See Participating Suzuki Marine dealer for details or visit www.suzukimarine.com
©2020 Suzuki Motor of America, Inc.

CLARKS FLOATS

PIER & PILE

443-871-0436 • CLARKSFLOATS@GMAIL.COM

CLARKS FLOATS PIER & PILE

- Floating Docks
- Pile Driving
- Re-Decking

MMCLB #390 I



8x16 KAYAK DOCK



8x12 KAYAK ACCESS



Kayak Floats
Dock Sections • Work Rafts
Swim Platforms • Gang Planks
SS Fasteners • #1 P.T. Lumber
Perma Float Floats
Composite Decking

Deale, MD



ANNAPOLIS CRUISAIR, INC.

Family Owned & Operated for Over 50 Years

SALES • SERVICE • INSTALLATION



U-LINE
U-Line Icemakers
110/115vAC

We will meet or beat
any competitive
price quote for
these products!



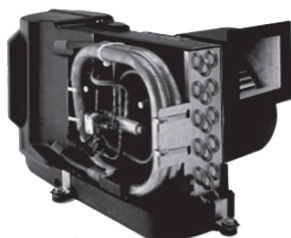
Espar

Marine Diesel
Heaters



Cruisair®

New Turbo
Air Conditioners • Heat Pumps



• We Have • BREATHE EASY AIR FILTERS

Sentry™
Cruisair

BATTERY
CHARGERS



SAFEST
CHARGER
ON THE
MARKET!

**Eskimo Ice
600 Ice Pump**

Provides up to 600 lbs. of fresh
ice in a day from your ships
water tank.



STINKY BOAT?

We Have **NEW**
Breathe Easy
Air Purifiers



DOMETIC

SPOTZERO®
Fresh Water Reverse Osmosis

Water Purification Systems



Vitrifrigo
REFRIGERATORS

WAECO
Adler/Barbour®



MARINE AIR SYSTEMS®

AIRRRRRRRRR
by Dometic GROUP



KOHLER.

- Generators -



Fischer Panda

Onan

2124 Renard Ct. • Annapolis, MD

(410) 224-0970 • (410) 974-6136 • Fax (410) 224-0050

www.annapoliscruisair.com



OWN THE BOAT OF YOUR DREAMS



Become the next “**Just Financed**”.
Apply online at **JJBEST.COM** or call **800-USA-1965**.

Offering low rates, long terms, and no prepayment penalties.
Simple application and quick funding.

Looking to refinance? We can help with that too.



UNLIMITED
TOWING
MEMBERSHIP
\$165*



BoatUS.com/Towing
800-395-2628

IT'S EASY TO **SWITCH & SAVE**

The competition can't beat our price or our number of tow boats. With 600+ boats in 300+ ports, you're never far from assistance when you need it. **Time to switch to the Red Boats of TowBoatU.S. and save money!**

*One year Unlimited Saltwater Membership pricing. Details of services provided can be found online at BoatUS.com/Agree.
TowBoatU.S. is not a rescue service. In an emergency situation, you must contact the Coast Guard or a government agency immediately.

HEROIC PERFORMANCE

SERVED IN 4 TANTALIZING FLAVORS

Engineered specifically for severe applications in a marine environment with the capability and durability to accommodate all your boating activities on a wide variety of vessels. The Raptor Series by Indmar offers superior craftsmanship in an exclusive line-up that defies every challenge, especially the test of time.



400



404 lb-ft of Torque
350 Horsepower



440



427 lb-ft of Torque
398 Horsepower



460



452 lb-ft of Torque
410 Horsepower



575



580 lb-ft of Torque
510 Horsepower

ENGINE
DISTRIBUTORS
INC. 

Indmar
MARINE ENGINES

800-220-2700 | www.edi-dist.com

RAPTOR
Indmar

ADVERTISERS INDEX

ALMARS.....	7	NEW YORK YACHT SALES.....	16
ANCHOR BOATS.....	24	GOLDSBOROUGH'S MARINE.....	15
ANNAPOLIS CRUISAIR.....	10	GOOTEE'S MARINE.....	15
ATC AUTO/MARINE TRAINING.....	17	HAPPY SKIPPER.....	17
BEACON LIGHT MARINA.....	6	INDEX.....	14
BOAT LIFTS UNLIMITED.....	14	JJ BEST BANC & CO.....	11
BOAT US.....	12	LIST YOUR BOAT.....	18
CLARKS FLOATS.....	9	RT 113 BOAT SALES.....	2
CLARKS LANDING.....	4	RUDY MARINE.....	5
CURTIS STOKES.....	8, 21	UPPER CHESAPEAKE YACHT SALES..	3
DANNY'S MARINE.....	9	US POWERBOAT SHOW.....	22
ENGINE DISTRIBUTORS.....	13	WATERFRONT.....	23

THE LARGEST LOW PROFILE BOAT LIFT MANUFACTURER IN THE USA

**CALL
US FOR
YOUR LOCAL
DEALER!**



Choose The Right Boat Lift, Choose

- Low Profile Design • Low Maintenance • 2/5 Yr Warr.
- Outside Walkway • Galvanized Steel Construction
- Aluminum Cradles Available • Capacity 800-40,000 lbs. www.magnumlift.com

MAGNUM

BOAT LIFTS

Personal Watercraft Lifts

Fully
Insured

BOAT LIFTS UNLIMITED

410-674-3100 • 1-800-268-5911

**WE SERVICE
MOST MAKES
OF BOAT
LIFTS!**

Located in Odenton, MD, this full-service boat lift manufacturer has a network of over 180 distributors serving the Chesapeake Bay, Great Lakes and Atlantic Coast with Magnum Boat Lifting Products. Boat Lifts Unlimited is dedicated to customer satisfaction through prompt, courteous service on most existing boat lifts and timely installation of new boat lifts. Quality materials, attention to detail and innovative design have made Boat Lifts Unlimited one of the largest boat lift manufacturers in the U.S.

**Fishin' Boats From
Fishin' Folks**

Summer Savings!

**PRICED
TO SELL!**

\$129,900



2004 Grady-White 300 Marlin
Twin 2019 Yamaha XTO 425HP

\$15,000



2015 G3 1860VBW Suzuki 60hp
Tiller With Power Tilt, Includes Trailer

\$29,900



2019 Mako Pro 17CC Skiff
Includes Trailer

**Yamaha Warranty
& LOW HOURS**

\$36,995



2018 G3 Bay 20 DLX
Yamaha VF115LA, Includes Trailer

\$17,995



2007 Wellcraft 215 Bay
Includes Trailer

\$159,900



**2006 Pursuit 3480 Drummond
Island Runner** Twin Yamaha F300
4.2L Offshore V6, Includes Trailer

GOOTEE'S MARINE

South of Cambridge On Maryland's Eastern Shore
1439 Hooper's Island Road, Church Creek, Maryland

May-Craft
The Perfect Boat for Your Sport

G3

KW
KEY WEST

800-792-0082

Gootees.com



GOLDSBOROUGH'S MARINE



"Where Happiness Is Just A Boat Ride Away"



Summer Fireworks Specials

www.crisfield.com/gold



2021 Lowe RX1660 Tiller Jon Pkg
Yamaha 20hp MLH 4-stroke,
EZ Loader galv trailer
LIST PRICE \$10,970

OUTBOARD MERCURY SALE

2.5HP MH	\$699
4HP MH	\$1,375
25HP ELPT	\$2,550

YAMAHA

2.5HP MH	\$999
15HP MLH	\$2,795



2021 18 Lookout Skiff
Open Tiller Package, Boat Only
LIST PRICE: \$13,295

Goldsborough's Marine

709 W. Main St., Crisfield, Maryland
Ph.# 410-968-0852 • Email: merc71@verizon.net



96RT 17-20 3100
Galvanized • **\$3,695**



**Trailer Blowout
Special!**



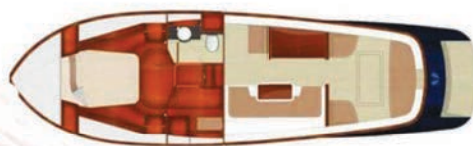
**1,700 LBS Galvanized
Bunk Trailer • \$2,695**



New York Yacht Sales



introduces the new
VENTO 40 PICNIC BOAT
 Factory Direct Sales and Service



New to the US and meticulously crafted to deliver speed and comfort in a modern vision of the picnic boat's timeless lines. Ready for a weekday afternoon, a weekend on the hook, or a week cruising to your favorite spot with all the modern conveniences of a luxury yacht.

So stunning from any angle you'll fall in love every time you walk down the dock, classic lines that never go out of style. There are also open and outboard models available. More information and details can be found on the Web at **www.newyorkyachtsales.com**



Or: contact Vince Schimmenti
 Ph: 1.973.454.4670 E-mail: nyys2000@hotmail.com



HAPPY SKIPPER
Follow Your Compass

We're the New Kids on the Dock!

Fun & Unique Nautical Apparel & Accessories

Motor or Sail - We Have Something for You!

www.thehappyskipper.com

888-747-1615



MARINE TECHNICIAN TRAINING

RIDE THE CREST
to CAREER SUCCESS

ENROLL FOR TRAINING TO BECOME A PROFESSIONAL MARINE SERVICE TECHNICIAN

Our in-depth program includes training in: Seamanship, AC & DC Electrical, ABYC Standards, Air Conditioning & Refrigeration, Mechanical Systems, Stern Drives/Transmissions, Computerized-Fuel Injected Inboard and Outboard Engines, Inboard, Outboard and I/O Systems, Electronic Diesel Engines (Cummins QSB 5.9 380 HP Common Rail Trainer), Fiberglass & Gelcoat Repair, Plumbing and Sanitation Systems.

Financial Aid for those who Qualify • Career Placement Assistance

CALL NOW 866-905-4278
www.autotraining.edu
900 Johnsville Blvd., Warminster, PA 18974

Supported by
MERCURY & **HONDA**
MARINE
with Training Materials & Equipment

For required program disclosure information, please go to www.autotraining.edu/consumerinformation.

FREE LISTING WITH PHOTO ON THE INTERNET

PRIVATE AD RATES

- ☐ INTERNET ONLY UP TO 1 YEAR..... \$39⁰⁰
☐ 3 ISSUES NO PHOTO CLASSIFIED..... \$49⁰⁰
☐ 3 ISSUES WITH COLOR PHOTO
 WITH COLOR PHOTO ON INTERNET..... \$59⁰⁰
☐ INTERNET FEATURE ADD ON 4 WEEKS
 AVAILABLE WITH AD PURCHASE ONLY!
 ON THE SALTY DOG HOME PAGE..... \$49⁰⁰
☐ FRONT COVER..... \$40⁰⁰
☐ FACEBOOK FEATURE..... \$15⁰⁰
☐ PUBLICATION MAILED TO YOU..... \$3⁰⁰

TOTAL

FRONT COVERS ARE BASED ON AVAILABILITY

- ☐ CHECK ☐ MONEY ORDER ☐ DISCOVER
☐ MASTERCARD ☐ VISA ☐ AMERICAN EXPRESS

CC#

Expiration Date _____ Security Code _____

Advertiser's Name

Address

Phone

Where did you pickup "The Salty Dog"?

Store _____

Town _____

Fill out the description form below, **up to 125 characters (including spaces & punctuation) of advertising**. Please put one character per space beginning with the motor. Include a check, money order or credit card, and mail to us with a good quality COLOR photograph of your boat. Photos will only be returned if accompanied by a self-addressed stamped envelope.

AD COPY

FT. _____ YR. _____

MANUF. / MODEL _____

MOTOR _____

ACCESSORIES _____

LOCATION OF BOAT _____, _____
City State Zip Code

PRICE _____

PHONE # _____

EMAIL _____

Send to: The Salty Dog
254 Brick Blvd • Suite 1
Brick, NJ 08723

888-843-1585

Fax (732) 477-9000 • Email: info@thesaltydog.com

No refunds after Ad is processed. • Advertiser will be responsible for \$20 fee on returned checks.

YOUR BOAT LISTING CAN ALSO BE SUBMITTED ON THE INTERNET www.thesaltydog.com

SPECIAL FEATURES

PRIVATE BOAT ADS Pgs. 19-20

SUBSCRIPTION CHESAPEAKE BAY

SALTY DOG is published Bi-weekly 25 times a year.

Papers are mailed **FIRST CLASS**. Your first issue will be mailed within 1 week. To subscribe, just fill in the amount of issues and multiply by \$2.00*

No. of issues _____ x \$2.00* = Total Cost _____

☐ CHECK ☐ MONEY ORDER ☐ MASTERCARD ☐ VISA

Credit Card No. _____

Exp. Date _____

Signature _____

Name _____

Address _____

City _____ State _____ Zip _____

Telephone _____

*Canada Subscription Add 10% - Bermuda Subscription Add 30%
 Outside the Continental USA Add 50% • Credit Cards Only Outside USA


Mail To: THE SALTY DOG, 254 Brick Blvd • Suite 1, Brick, NJ 08723


A Bi-weekly Publication for
 Powerboats, Sailboats, Marine
 Equipment, Supplies, Services,
 Waterfront and Photo Ads

For More Info on Display Ads or Internet Listings
Call 888-843-1585 • Fax (732) 477-9000
info@thesaltydog.com • Mon.- Fri. 9:00 am to 4:00 pm

See Color Photo on the Internet



40' 2006 FORMULA 400 SS, T/Volvo Dsls, many updates, loaded, **\$219,000**, 609-693-9423 tidesendmarina1@gmail.com 152565

See Color Photo on the Internet



32' 2006 SEA RAY Sundancer 320, TWIN 6.2 320HP BR.3 DRIVES, A/C GEN. NEW BELLOWS AND NEWER MANIFOLD AND RISERS MAINTAINED BY OWNER 396HRS, **\$119,000** 609-709-2159 r.mastro@comcast.net 153363

See Color Photo on the Internet



28' 1988 BERTRAM FLYBRIDGE, T/Captain's Choice Crusaders, less than 400 hours, 11' beam, new fuel tank, full enclosure, electronics, **\$35,995**, 908-309-4016 almarmarine1@gmail.com 152807

See Color Photo on the Internet



14' 2013 LIVINGSTON LV14 CATAMARAN, Mercury 20hp 4-stroke, electric start, custom cover, **\$7,850**, 732-899-8010 sales@schraderyachts.com 153036

See Color Photo on the Internet



31' 2000 SEA RAY 310 SUNDANCER, T/Merc 5.7L, BIII, gen, windlass, remote spotlight, power vent, ready to cruise! **\$59,900 OBO**, 917-817-5084 info@deepwaterlanding.com 153035

See Color Photo on the Internet



28' 2000 BOSTON WHALER CONQUEST, 2015 T/250hp Yamaha 4-strokes, 725 hrs, extensive elec, new Eisenglass, many upgrades, in water, ready to go, 2021 slip available w/purchase, 732-223-0400 info@deepcreekcovemarina.com 153251

See Color Photo on the Internet



36' 1989 TROJAN 12M CONVERTIBLE, T/671 Ti Detroit Diesel engines, Onan 8kW diesel generator, galley down, **\$59,500**, 732-899-8010 sales@schraderyachts.com 153259

See Color Photo on the Internet



27' 2008 Everglades Boats 270 CC, Twin Suzuki 250 HP. Very clean, well documented, Trailer Included, 570 Hours, **\$109,500**, 301-412-8929 Makoman47@aol.com 153419

See Color Photo on the Internet



36' 1989 TROJAN 12M CONVERTIBLE, Twin 671 Ti Detroit Diesel engines, Onan 8 kW diesel generator, galley down, **\$59,500**, 732-899-8010 sales@schraderyachts.com 153405

See Color Photo on the Internet



31' 2004 RINKER Fiesta 312 Vee, Twin 350 volvos, New A/C, upgraded outdrives, fresh water cool, well maintained, good condition! 45ft slip Anchorage Marina Balt. MD selling cheap make deal bad & slip, **\$33,900 • 703-675-0058** Justmyboat@gmail.com 153052

See Color Photo on the Internet



26' 2002 COBIA CENTER CONSOLE, 500 hours w/ new \$6K trailer, new canvas, new electronics, turn key, everything works, **908-489-5098** 152665

See Color Photo on the Internet



33' 1987 CRUISERS 336 Ultra-Vee, 340 HP Mercruiser 454's, More info online 580 hours H Steer, T Tabs A Windlass VHF Sleeps 6, HW Galley Head 16K AC/H New Carpet, Seat, Top. 2 Garmins, **\$14,999 • 610-608-6989** christopher_laird@hotmail.com 153467

See Color Photo on the Internet



25' 2015 PARKER 2520 XLD, Twin Yamaha F200, open back pilothouse, custom rodholders, 4G radar, **\$98,900**, 732-899-8010 sales@schraderyachts.com 152769

See Color Photo on the Internet



29' 2009 Azure AZ298, 496 H.O Mag, Beautiful 29' Open Bowrider- 16 person Capacity- 70 Gallon fuel tank- Engine MerCruiser 496 MAG HO - Bravo Three Twin Prop- 425 HP - Dual Battery with Switch, **\$49,700**, 732-642-3577 cynthia.zulick@cardinalfinancial.com 153189

See Color Photo on the Internet



25' 2009 NOVURANIA 750 Launch, Volvo D4-300, RIB tender with 300 HP Volvo diesel & Hamilton Jet Drive. Over \$13,000 in updates over the past two years. GPS/ SAT Radio, **\$37,000**, 908-783-1491 rgilman@nelsonward.com 153183

See Color Photo on the Internet



24' 1999 Baja H2X, Big Block 7.4L MPI, 390 hrs, custom painted ODS, no bottom paint, trailer, runs like new, \$26,900, 610-513-3331 genebaja@comcast.net 152978

See Color Photo on the Internet



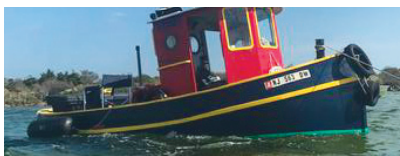
22' 1992 SHAMROCK CENTER CONSOLE, runs great, gas engine, Call or Text Rob, \$9,500, 908-489-5098 153252

See Color Photo on the Internet



21' 2017 BAYLINER Element F21, Mercury 150, Exc cond, low miles w/warranty, trailer, 2 Helix depth finders, stereo, 2way radio, splash curtains, helm cover, bottom paint, \$35,000, 717-676-5182 jtorchia@riverrockacademy.net 153258

See Color Photo on the Internet



20' 1983 CUSTOM BUILT Mini Tugboat, Yanmar 2QM20, 20' 1983 Mini Tugboat custom wood/FB 20hp Diesel yanmar keel cooled dry stack exhaust inc trailer in water \$18,000 609-519-3583 harbornj@yahoo.com 153457

See Color Photo on the Internet



15' 1981 A M F Sunbird, 3.5, 15.6" AMF Sunbird Sloop Daysailer. Fully equipped. Really nice. Centerboard may be stuck but probably can be unstuck. + Trailer, \$1,200, 443-866-5824 km777heavem@gmail.com 153388

See Color Photo on the Internet



38' 1989 ISLAND PACKET SAILBOAT, Yanmar Diesel, 3 cabin/2 head layout \$80,000 • 732-899-8010 sales@schraderyachts.com 153406

BLAZING VISUALS

CUSTOM BOAT GRAPHICS, WRAPS, & REG NUMBERS



BLAZINGVISUALS.COM
CALL CASEY - 732.267.6822
CASEY@BLAZINGVISUALS.COM

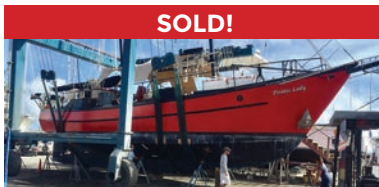
SAY YOU SAW IT IN THE SALTY DOG   /BLAZING_VISUALS

PROFESSIONAL DESIGN TEAM
HIGHEST QUALITY MATERIALS





Worldwide Yacht Sales | Yacht Charters | New Yacht Construction



SOLD!

72' Trade Rover



SOLD!

50' Chris-Craft



SOLD!

48' Evans Boats



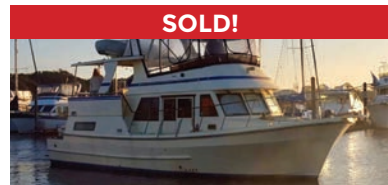
SOLD!

44' DeFever



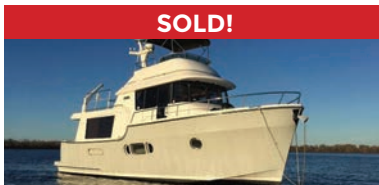
SOLD!

44' Gulfstar



SOLD!

42' Fu Hwa



SOLD!

40' Fathom



SOLD!

40' Hinckley



SOLD!

36' C&C



SOLD!

36' Bristol



SOLD!

32' Eagle



SOLD!

26' Sisu

List your boat with us and join our **SOLD list!**

To see more details about these and all other yachts around the globe, please visit our website below.

Annapolis, MD • St. Michaels, MD • Delaware City, DE • Deltaville, VA • Woodbridge, VA
Telephone: 410.919.4900 • Email: info@curtisstokes.net

www.curtisstokes.net

WELCOME BACK TO ANNAPOLIS



UNITED STATES POWERBOAT SHOW

OCTOBER 7-10, 2021
CITY DOCK, ANNAPOLIS, MD



SHOW UPDATES + TICKETS: AnnapolisBoatShows.com





WATERFRONT MARINE

#1 GOLL AVE, SOMERS POINT, NJ ~ 609-926-1700

281 PRINCETON AVE, BRICK, NJ ~ "Featuring Chaparral & Carver" 732-202-6961

2822 SOLOMON'S ISLAND RD, EDGEWATER, MD ~ 443-949-9041

Premium Brands ~ Exceptional Service

WWW.WATERFRONTMARINE.COM

ORDER YOUR BOAT NOW!



- PREOWNED BOATS -



2018 Robalo R207 Dual Console
Yamaha F150 • \$44,900



2006 Chaparral 330 Signature
T/Volvo Penta 320hp • \$110,000



2018 Chaparral 287 SSX
Volvo Penta 380 DP • \$118,800

BOWRIDERS & PONTOONS

28' '12 Chaparral 287 SSX, 8.2L	Pending
28' '18 Chaparral 287 SSX, Volvo Penta 380 DP	\$118,800
27' '10 Chaparral 276 SSX, Volvo Penta 8.1L 375 duo prop	Pending
26' '13 Chaparral 264 Sunesta BR, Volvo Penta 320 DP	\$59,900
24' '11 Chaparral 246 SSI, Volvo Penta 5.7L 300hp DP	Pending
24' '18 Chaparral 2430 VRX	Pending
24' '15 Chaparral 243 Vortex	Pending
23' '04 Yamaha AR230 Jet Boat, w/trailer	Pending
23' '07 Monterey 234	Pending
22' '16 Chaparral 223 Vortex VRT Jet Boat	\$44,500
22' '11 Chaparral 224 Sunesta	Pending
22' '06 Sea Ray 220	Pending
20' '11 Stingray 208 LR	Pending
20' '07 Cobalt Bowrider	Pending

CRUISERS & CUDDY CABINS

38' '06 Cruisers Yachts 385 Motor Yacht	Pending
36' '11 Rinker 360 Cruiser	Pending
33' '06 Chaparral 330 Signature, T/Volvo Penta 5.7 DP	\$99,900
33' '12 Chaparral 330 Signature	\$110,000
24' '03 Chaparral 240 Signature, Volvo Penta 5.0L 260 DA	\$24,800

23' '88 Chaparral 235XLC, 5.7L Merc	\$7,900
-------------------------------------	---------

FISHING BOATS

33' '06 Chaparral 330 Signature, T/Volvo Penta 320hp	\$110,000
31' '16 Sportsman 312 Center Console, T/Yamaha F300	SOLD
30' '17 Robalo R302, T/Yamaha F300 XCA	SOLD
30' '17 Robalo R302 CC, T/Yamaha 300hp	Incoming
27' '19 Robalo R272, T/Yamaha F200, lift kept, trailer	Pending
24' '17 Robalo R247 DC, Yamaha F300	Pending
24' '18 Robalo R246 Cayman CC, Yamaha F300, trailer	\$72,997
24' '18 Robalo 246 Cayman CC, Yamaha F300	Pending
23' '06 Polar 230 WA Cuddy, T/Yamaha F115, trailer	Pending
23' '99 Boston Whaler 23 Outrage, T/'11 Evinrude 150hp E-Tec	SOLD
21' '14 Sea Hunt 211 Ultra CC, Yamaha F150	SOLD
20' '18 Robalo R207 Dual Console, Yamaha F150	\$44,900
20' '13 Robalo R200, Yamaha F150hp, trailer	SOLD
20' '19 Robalo R200, Yamaha F150, trailer	SOLD
20' '03 Sea Fox 205 DC	Pending
20' '96 Trophy 2002 WA	\$8,900
19' '11 Trophy 1903 CC, Merc 150hp	\$24,900
19' '17 Yamaha 190 CC, High Output Jet, 70 hours	\$31,900
18' '17 Robalo R180, t-top, Yamaha F115, trailer	SOLD
18' '16 Robalo R180, Yamaha F115, trailer	Pending



**AUTHORIZED
PARTS &
SERVICE**



**Full Service
Marina w/Slips &
Racks Available!**

Large Indoor Showroom

OPEN 7 DAYS A WEEK



FOUR WINNS



KEY WEST



Scout
Discover More...



G3 Boats



**We Have Trailers Available!
Call for Info!**

YAMAHA BUILT TO LAST

410.287.8280

ANCHOR BOATS
North East, Maryland

www.AnchorBoat.com

448 MAULDIN AVE | NORTH EAST, MD 21901

Parts & Service
General Boat Repairs
High & Dry Boat Storage