

Free!



The Salty Dog®



CHESAPEAKE BAY EDITION

Published Every Other Week • Distributed in Maryland, Delaware, Southern Pennsylvania and Virginia

POWERBOATS & SAILBOATS ...Including Marine Services



26' 2013 CHAPARRAL 257 SSX, Volvo engine, one owner, super clean, extremely well maintained, \$18,500, 413-240-3297, sevenonley@gmail.com 151450



35' 1985 J BOATS, Yanmar fold prop, 2 mainsails (1 new), 1 new Quantum Black jib with add'l sails, spinnakers & kevlar 5lb spin pole, new bottom paint, new backstay, 14 sails, great condition, \$19,950, 443-994-4443, jshannah32@gmail.com 148475



32' 1988 REGAL COMMODORE, less than 20 hours on T/7.4 330hps, Bravo 1 drives w/SS props, dry dock for 5 years, \$7,000, 240-398-4317, oneway88@yahoo.com 151602



29' 1999 BAH 299 FISHERMAN, 5.7L, great family and fishing boat with many extras, \$23,000, 732-618-9703, Dap72365@yahoo.com 151264

**List Your Boat
As Low As \$49!**

Go to www.thesaltydog.com
to get started!

Private Boat Ads Only



25' 2018 GRADY WHITE 257 FISHERMAN, READY TO SELL!!!! T/F150 Yamahas, low hrs, 7/23 warranty, factory options, Garmin GPS radar, Icom 504 radio, outriggers, fish inshore/offshore, family cruising, like new, END OF SEASON SALE! MAKE OFFER! \$119,000, 302-226-3734, Cell 302-218-9325 144975



NEW 2020 SEA FOX 328 COMMANDER
1 Available, Call for Details • \$199,800
302-945-2254 • anita@rudymarine.com



2020
MERCURUISER
502 HO DTS,
new take outs,
2 motors for sale,
full warranty,
boat converted to diesel
for Sea Ray factory
by Vector Marine
\$12,500
410-215-7772
rsg11411@gmail.com
151376



NEW 2019 BLACKFIN 212 CC
F-250 Yamaha, loaded • \$75,999
302-945-2254 • anita@rudymarine.com

Annapolis, MD • St. Michaels, MD
Deltaville, VA • Woodbridge, VA
Delaware City, DE

CONTACT US TODAY!

info@curtisstokes.net
410.919.4900

**CURTIS
STOKES**
& ASSOCIATES

www.curtisstokes.net

1-888-843-1585 • Private Boat Information on Page 16

Fall Back to Summer Savings EVENT

NOW THRU OCTOBER 31ST



EXPERIENCE THE EVOLUTION™
BAYLINER®
Trophy Fishing Boats
15' - 22' Are Back!



Pre-Demo Test Ride Next Season's Boat!

Fall Boat Show **CANCELLED** | Winter Boat Show **QUESTIONABLE**
 Inventory Status **SOLD OUT** | Factory Order Lead Time **3-6 MONTHS**

IT'S TIME... If You Want A Boat For 2021...

ORDER NOW!



Most models of BAYLINER, TROPHY and SPORTSMAN Boats
 are available for Private Appointment Demo Test Rides thru Oct. 31st

Our Promise to You:

- Safe, clean, private personalized demo test ride appointments on your preferred day and time
- Boat Show Prices with a Price Lock Guarantee against any price increases from the factory
- Written Guarantee that you won't see lower advertised pricing from us this winter/spring - if so we will Refund the Difference
- You will be guaranteed a boat next spring, no disappointment
- When boat arrives, take it home or leave here until spring at no charge

Call or visit RiversideMarine.com to claim your preferred appointment!



600 RIVERSIDE DRIVE
 ESSEX, MD 21221
 410.686.1500
 800.448.6872



WWW.RIVERSIDEMARINE.COM • SALES@RIVERSIDEBOATS.COM

Upper Chesapeake Yacht Sales

John Curry • (410) 299-3598
www.upperchesapeakeyachtsales.com



42' 2016
Regal Sport
Coupe
\$397,900



Fully loaded high end Regal with just 70 hours on Volvo 400hp Diesel motors and IPS drives. Boat was delivered new in April of 2018 which is start of warrantee period. Buy now and be ready for Spring!
We own this boat and trades are considered!



43' '81 Viking FBMY,
rebuild DD 6-71, new genset, new
canvas, Davit, **\$59,900**



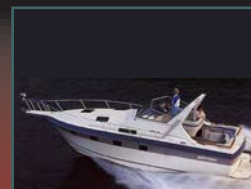
42' '16 Regal 42SC,
T/Volvo Dsls with IPS, mint,
loaded, **\$397,900**



37' '88 Hunter Legend Sloop,
great electronics, nice,
\$39,900



**36' '78/'07 Jarvis Newman
FB Cruiser,** 330hp Cummins,
gen, AC, mint, **\$139,900**



33' '86 Cruisers 3370,
T/454, AC, nice,
\$12,900



31' '13 Bertram Custom SF,
like new, \$200K below
replacement, **\$395,000**



28' '78 Cape Dory Sloop,
diesel, great starter boat,
\$12,900



**25' '00 Wellcraft 250
Center Console,** T/150hp,
hardtop, trailer, **\$14,900**



**25' '09 Glastron 259
Express Cruiser,** AC,
super clean, trailer, **\$29,900**



24' '80 Lyman Sportsman,
220hp IB, restored classic, mint,
trailer included, **\$14,900**

14' '97 Novurania 430 DL Center Console, 50hp 4-stroke, trailer, super clean **\$7,900**
24' '15 Sea Chaser HFS, 300hp Suzuki, alum trl, loaded w/elects, mint..... **Pending**
35' '76 Ericson Sloop, Volvo Diesel, upgrades in process **\$14,900**



**Expect The Same
Superior Service From Our
Brokerage That You Get
From Our Marina**

BOAT SALES & BROKERAGE
• Financing & Insurance Available •

WORTON CREEK MARINA

23145 Buck Neck Road • Chestertown, MD 21620

(410) 778-3282

Rt. 113 Boat Sales and Service



Selbyville, DE 302-436-1737
www.Rt113BoatSales.net

TAX FREE

COBIA
20 to 35 Feet

302-436-1737



QUALITY IS MORE AFFORDABLE THAN YOU THINK!

PATHFINDER
ANGLER DRIVEN
20 TO 27 FEET

NOBODY Beats My Deals!



2020 Cobia 320 CC Leftover Dealer Demo

\$249,457
\$209,457
Trailer not included in price.

f **YouTube**

Repower
150hp to 425hp




BOAT TRAILERS at Wholesale Pricing!

GARMIN
AUTHORIZED RESELLER
Certified Installer

YAMAHA

MASTER YAMAHA TECHNICIAN ON STAFF
Repower with Yamaha's Unmatched Reliability... **TAX FREE!**





PRICES DRASTICALLY REDUCED!

NEVER BEEN A LOWER PRICE!

Very Limited Quantities!



2020 Misty Harbor B-2285 CEC Luxury Cruiser Triple-tube, F-150 Yamaha



2020 Misty Harbor B-2285 CU Triple-tube, F-150 Yamaha

BLOWOUT PRICING \$49,995



2020 Misty Harbor A-1885 CF, F-70 Yamaha



2020 Misty Harbor A-2085 CF, F-115 Yamaha



2020 Misty Harbor A-2285 CF, F-115 Yamaha

SEAFOX

No Trades



NEW 2020 Sea Fox 328 Commander



NEW 2020 Aquasport 2300 CC F-250 Yamaha

BLACKFIN

No Trades



NEW 2019 Blackfin 212 CC F-250 Yamaha, Loaded

Closeout Price! \$75,999



JEANNEAU



NEW 2021 Jeanneau NC895 Sport T/F250 Yamahas



MONTEREY BOATS



NEW 2019 M225 Yamaha F250

BLOWOUT PRICING \$59,995



Delaware has

NO SALES TAX!
3 GREAT LOCATIONS!



REPOWER HEADQUARTERS

302-945-2254 • 32606 DuPont Blvd Dagsboro, DE 19969

f 302-999-8735 • 411 S. Maryland Ave. (Rt 4) Wilmington, DE 19804

443-995-3785 • 3033 Kent Narrows Way South, Suite 3 Grasonville, MD 21638



YAMAHA

Revs Your Heart®



Beacon Light
Marina

825 Bowleys Quarters Rd. | Middle River, MD 21220

410-335-6200

beaconlightmarina.com | sales@beaconlightmarina.com

WITH SO MANY WAYS TO HAVE FUN ON A YAMAHA,
It's easy to find yours at Beacon Light Marina



ALMARS

We Are A Full Service, Premier Mercury Outboard Repair Center! Let Our Certified Mercury Technicians Service Your Mercury Motor Needs!

LEFTOVER VERADO SALE!

**YES!!!!
WE ARE OPEN
FOR BUSINESS
8AM-5PM
MONDAY-FRIDAY!**



225hp
black • \$14,995



250hp
black • \$15,995



300hp
black • SOLD



300hp
white • \$18,995



350hp
Call for Great Deal!



350hp
Call for Great Deal!

**We Now
Offer
INJECTOR
SERVICE
with
ONE Day
Turnaround!**



150
4-stroke
Black



150 ProXS
4-stroke
Black



175XL ProXS
4-stroke
Black



200
Sea Pro
Black



225XL
4-stroke
Black



250 XL
4-stroke
White

**100's of Used
Cowllings In Stock!
Call for Availability!**

**2018 250hp
XXL Opti
\$15,995**

**250XL PRO
VERADO 15,995
Only 1 Available**

REMANUFACTURED OUTBOARD ENGINE SALE!

90hp - 250hp 2 Year Warranty

Starting As Low As \$5,495 Call for Details!

**CALL US
FOR GREAT
DEALS ON
NON-CURRENT
POWERHEADS!**

**Call us for current pricing new current
and noncurrent outboards
NO SALES TAX IN DELAWARE!**

701 Washington St., New Castle, DE

**302-328-8541
www.almarsoutboards.net**

All prices good
while supplies last!

HOURS: Monday - Friday: 8am - 5pm

CALL FOR GREAT PRICING ON NEW

& USED MERCURY OUTBOARDS

NO HIDDEN COSTS

NOT RESPONSIBLE FOR TYPOGRAPHICAL ERRORS



Pricing includes all rebates.



Worldwide Yacht Sales | Yacht Charters | New Yacht Construction



1978 36' Trojan - \$32,800
Jason Hinsch - 410.507.1259



1998 35' Carver - \$74,500
David Robinson - 410.310.8855



2007 34' Sea Ray - \$95,500
Mia Keeley - 443.534.3598



1980 33' Bertram - \$57,000
David Robinson - 410.310.8855



2005 32' Donzi - \$98,500
Anthony Sayo - 757.427.4042



1995 29' C-Hawk - \$42,500
Jason Hinsch - 410.507.1259



2000 29' Tiara Yachts - \$49,900
Bill Boos - 410.200.9295



2011 28' Mako - \$89,000
Anthony Sayo - 757.427.4042



2000 28' Bayliner - \$24,000
Anthony Sayo - 757.427.4042



2013 27' Cherubini - \$237,000
Jack Kelly - 609.517.2822



2003 20' Cherubini - \$39,900
Bill Boos - 410.200.9295



1982 19' Custom - \$5,990
Bill Boos - 410.200.9295

To see more details about these and all other yachts around the globe, please visit our website below.

Annapolis, MD • St. Michaels, MD • Delaware City, DE • Deltaville, VA • Woodbridge, VA
Telephone: 410.919.4900 • Email: info@curtisstokes.net

www.curtisstokes.net

Sassafras Harbor Marina Yacht Sales



888-221-5022

1 George Street, P.O. Box 68
Georgetown, MD

sassafrasharbormarina.com



56' Carver 564 Cockpit MY '02
T-Volvo Diesel, T&H Floors
\$249,000



42' Chris Craft 426 '86
1996 T-Crusader, Bow thruster
Nice liveaboard **\$49,900**



41' Hatteras Convertible '67
T-Detroit Diesel, many upgrades
\$57,500



39' Silverton 392 MY '99
Roomy interior, nice condition!
\$89,900



37' Sea Ray 370 Sedan '95
T-Merc. 7.4, Well maintained
\$49,500



35' Carver 350 Mariner '03
One level salon & galley!
\$80,000



35' Chris-Craft Catalina '84
T-Crusader new in 2012
\$25,000



32' Carver Mariner '87
T-Crusader w/low hrs.
\$19,900



30' Sea Ray Sundancer '89
Generator, new engines '14
\$25,900



28' Bayliner 285 '03
Merc. 350 Mag MPI
\$33,500



23' Crownline 236SC '16
Merc. 6.2 B-III Low hours!
\$56,000 w/trailer



20' Sailfish 216CC '02
Yamaha 115-4 stroke
\$15,900 w/trailer

Boats are selling...We could be advertising your boat here!



**Sassafras Harbor
Marine Store**

OPEN 7 DAYS A WEEK!

***The Heron's Nest
Gift Shop***



Marina: 410-275-1144 ~ Floating Dock Slips Available ~ Store: 410-275-2666

ANNAPOLIS CRUISAIR, INC.

Family Owned & Operated for Over 50 Years

SALES • SERVICE • INSTALLATION



U-LINE
U-Line Icemakers
110/115vAC

We will meet or beat
any competitive
price quote for
these products!



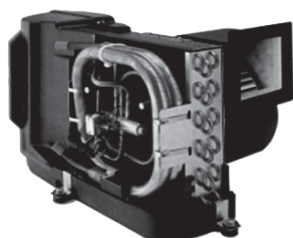
Marine Diesel
Heaters



Espar

Cruisair®

New Turbo
Air Conditioners • Heat Pumps



• We Have • BREATHE EASY AIR FILTERS

Sentry™
Cruisair

BATTERY
CHARGERS



SAFEST
CHARGER
ON THE
MARKET!

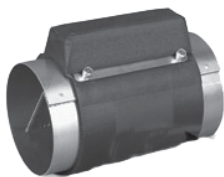
**Eskimo Ice
600 Ice Pump**

Provides up to 600 lbs. of fresh
ice in a day from your ships
water tank.



STINKY BOAT?

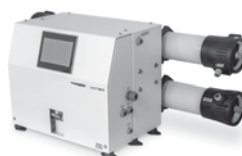
We Have **NEW**
Breathe Easy
Air Purifiers



➡ **DOMETIC**

SPOTZERO®
Fresh Water Reverse Osmosis

Water Purification Systems



Vitrifrigo
REFRIGERATORS

WAECO
Adler/Barbour®



MARINE AIR SYSTEMS®

AIRRRRRRRR

by Dometic GROUP



KOHLER®

- Generators -




Fischer Panda

Onan

2124 Renard Ct. • Annapolis, MD

(410) 224-0970 • (410) 974-6136 • Fax (410) 224-0050

www.annapoliscruisair.com



**YOUR
ENJOYMENT
MADE EASY**

GEICO[®]
FOR YOUR BOAT

Get a GEICO quote for your boat and, in just 15 minutes, you'll know how much you could be saving. If you like what you hear, you can buy your policy right on the spot. Then let us do the rest while you enjoy your free time with peace of mind.

geico.com/boat | 1-800-865-4846

Some discounts, coverages, payment plans, and features are not available in all states, in all GEICO companies, or in all situations. Boat and PWC coverages are underwritten by GEICO Marine Insurance Company. In the state of CA, program provided through Boat Association Insurance Services, license #0H87086. GEICO is a registered service mark of Government Employees Insurance Company, Washington, DC 20076; a Berkshire Hathaway Inc. subsidiary. © 2020 GEICO 20_206641

*Escape
Unplug
Unwind*

ATLANTIC CITY IN-WATER POWER BOAT SHOW®

September 10-13, 2020

GOLDEN NUGGET CASINO HOTEL | FARLEY STATE MARINA

\$12 tickets in advance
FREE SELF PARKING



www.acinwaterboatshow.com



New Dealer for:
SEA PRO
the next wave

**208 Bay**

CAROLINA SKIFF

**23 Ultra**

ALUMA Craft



Powered by:

SUZUKI
MARINE

SEA CHASER
By: Carolina Skiff, Inc.

**24 HFC**

DANNY'S MARINE
(410) 228-0234 • www.dannysmarine.com
Located on US Rt 50 (mile marker 86) • Chateau Drive near Linkwood, MD
dannysmarine@comcast.net

Limited Time Offers. Not all models qualify. See Participating Suzuki Marine dealer for details or visit www.suzukimarine.com
©2018 Suzuki Motor of America, Inc.

Goldsborough's Marine



709 W. Main St., Crisfield, Maryland

Ph.# 410-968-0852 • Email: merc71@verizon.net

Roughneck
by LOWE

"Where Happiness Is Just A Boat Ride Away!"

LATE SUMMER BLOWOUT SALE!

2.5 MH	\$999
4 MH	\$1,410
9.9 MH	\$2,475
9.9 MLH	\$2,495
15 MH	\$2,845
20 MH	\$3,090
20 MLH	\$3,095
25 MLH	\$3,160



YAMAHA



Outboard Sale
Starting at \$999



\$18,990

2019 C-Hawk 16FT CC
Yamaha 50 ELPT HT 4-stroke
EZ Loader galv trailer

The Best Ships Store on Delmarva • **Open All Year** • www.crisfield.com/gold
Maryland's Oldest C-Hawk Dealership • Maryland's Largest Lowe Boat Dealer

ADVERTISERS INDEX

AC IN WATER BOAT SHOW.....	12	GEICO.....	11
ALMARS.....	7	GOLDSBOROUGH'S MARINE.....	13
ANCHOR BOATS.....	24	GRANDE YACHTS.....	17
ANNAPOLIS CRUISAIR.....	10	HF FISHER.....	15
ATC AUTO/MARINE TRAINING.....	22	LIST YOUR BOAT.....	16
BEACON LIGHT MARINA.....	6	RIVERSIDE MARINE.....	2
BOAT LIFTS UNLIMITED.....	14	RT 113 BOAT SALES.....	4
CLARKS FLOATS.....	15	RUDY MARINE.....	5
CLARKS LANDING.....	19	SASSAFRAS.....	9
CURTIS STOKES.....	8, 18	UPPER CHESAPEAKE YACHT SALES.....	3
DANNY'S MARINE.....	13	WATERFRONT.....	23
DOUR YACHT SALES.....	17	WEST SHORE YACHT CENTER.....	17

THE LARGEST LOW PROFILE BOAT LIFT MANUFACTURER IN THE USA

**CALL
US FOR
YOUR LOCAL
DEALER!**



Choose The Right Boat Lift, Choose

- Low Profile Design • Low Maintenance • 2/5 Yr Warr.
- Outside Walkway • Galvanized Steel Construction
- Aluminum Cradles Available • Capacity 800-40,000 lbs.

MAGNUM

BOAT LIFTS

Personal Watercraft Lifts

www.magnumlift.com

Fully
Insured

BOAT LIFTS UNLIMITED

410-674-3100 • 1-800-268-5911

**WE SERVICE
MOST MAKES
OF BOAT
LIFTS!**

Located in Odenton, MD, this full-service boat lift manufacturer has a network of over 180 distributors serving the Chesapeake Bay, Great Lakes and Atlantic Coast with Magnum Boat Lifting Products. Boat Lifts Unlimited is dedicated to customer satisfaction through prompt, courteous service on most existing boat lifts and timely installation of new boat lifts. Quality materials, attention to detail and innovative design have made Boat Lifts Unlimited one of the largest boat lift manufacturers in the U.S.

CLARKS FLOATS

PIER & PILE

443-871-0436 • CLARKSFLOATS@GMAIL.COM

CLARKS FLOATS PIER & PILE

- Floating Docks
- Pile Driving
- Re-Decking

MMCLB #390 I



8x16 KAYAK DOCK



8x12 KAYAK ACCESS

**Any Custom
Size Float
Available!**



Kayak Floats
Dock Sections • Work Rafts
Swim Platforms • Gang Planks
SS Fasteners • #1 P.T. Lumber
Perma Float Floats
Composite Decking

Deale, MD



WINTER STORAGE COVERS

Light Weight Industrial Strength Material

MORE ECONOMICAL THAN "SHRINK WRAP"/LIGHTER AND
LESS EXPENSIVE THAN CANVAS/BETTER FITTING THAN A TARP

**So light and easy to put on, it requires no more than two people to
cover your "investment" • 1 Year Warranty for Fit and Workmanship**

No More Breaking Your Back Or The Bank!

www.hffisherandsons.com

H.F. FISHER & SONS, INC.

875 Industrial Highway Unit 8 • Cinnaminson, NJ 08077

Since 1954

Call Us Now...or Call Your Shrinkwrap Guy Again and Again and Again

1-800-624-2868 • 1-856-461-2883

FREE LISTING WITH PHOTO ON THE INTERNET

PRIVATE AD RATES

- ☐ INTERNET ONLY UP TO 1 YEAR..... \$39⁰⁰
☐ 3 ISSUES NO PHOTO CLASSIFIED..... \$49⁰⁰
☐ 3 ISSUES WITH COLOR PHOTO
 WITH COLOR PHOTO ON INTERNET..... \$59⁰⁰
☐ INTERNET FEATURE ADD ON 4 WEEKS
 AVAILABLE WITH AD PURCHASE ONLY!
 ON THE SALTY DOG HOME PAGE \$49⁰⁰
☐ FRONT COVER..... \$40⁰⁰
☐ FACEBOOK FEATURE \$15⁰⁰
☐ PUBLICATION MAILED TO YOU..... \$3⁰⁰

TOTAL

FRONT COVERS ARE BASED ON AVAILABILITY

- ☐ CHECK ☐ MONEY ORDER ☐ DISCOVER
☐ MASTERCARD ☐ VISA ☐ AMERICAN EXPRESS

CC# _____

Expiration Date _____ Security Code _____

Advertiser's Name _____

Address _____

Phone _____

Where did you pickup "The Salty Dog"?

Store _____ Town _____

Fill out the description form below, **up to 125 characters (including spaces & punctuation) of advertising**. Please put one character per space beginning with the motor. Include a check, money order or credit card, and mail to us with a good quality COLOR photograph of your boat. Photos will only be returned if accompanied by a self-addressed stamped envelope.

AD COPY

FT. _____ YR. _____

MANUF. / MODEL _____

MOTOR _____

ACCESSORIES _____

LOCATION OF BOAT _____, _____, _____
City State Zip Code

PRICE _____

PHONE # _____

EMAIL _____

Send to: The Salty Dog
254 Brick Blvd • Suite 1
Brick, NJ 08723

888-843-1585

Fax (732) 477-9000 • Email: info@thesaltydog.com

No refunds after Ad is processed. • Advertiser will be responsible for \$20 fee on returned checks.

YOUR BOAT LISTING CAN ALSO BE SUBMITTED ON THE INTERNET www.thesaltydog.com

SPECIAL FEATURES

PRIVATE BOAT ADS Pgs. 20-22

SAILBOATS Pg. 22

SUBSCRIPTION CHESAPEAKE BAY

SALTY DOG is published Bi-weekly 25 times a year.

Papers are mailed **FIRST CLASS**. Your first issue will be mailed within 1 week.

To subscribe, just fill in the amount of issues and multiply by \$2.00*

No. of issues _____ x \$2.00* = Total Cost _____

☐ CHECK ☐ MONEY ORDER ☐ MASTERCARD ☐ VISA

Credit Card No. _____

Exp. Date _____

Signature _____

Name _____

Address _____

City _____ State _____ Zip _____

Telephone _____

*Canada Subscription Add 10% - Bermuda Subscription Add 30%
 Outside the Continental USA Add 50% • Credit Cards Only Outside USA



Mail To: THE SALTY DOG, 254 Brick Blvd • Suite 1, Brick, NJ 08723



A Bi-weekly Publication for
 Powerboats, Sailboats, Marine
 Equipment, Supplies, Services,
 Waterfront and Photo Ads

For More Info on Display Ads or Internet Listings

Call 888-843-1585 • Fax (732) 477-9000

info@thesaltydog.com • Mon.- Fri. 9:00 am to 4:00 pm

VENTURE TRAILER SALE

Buy At Our Cost
Over 25 Trailers
In Stock

**MUST
GO!**

We are overstocked with new trailers
sizes from 22' to 26'

All aluminum with galvanized wheels!

GRANDE YACHTS
INTERNATIONAL

Grasonville, MD

410-286-1350

CALL NOW
410-686-6998



WEST SHORE
YACHT CENTER
ESSEX, MARYLAND

TROPICAL
POOL

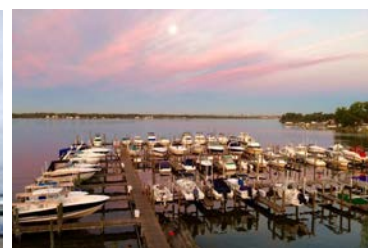
BEST LIFT
SLIPS ON
THE BAY

CLIMATE
CONTROLLED
BATHROOMS
AND SHOWERS

GET YOUR LIFT AT

WEST SHORE YACHT CENTER

LIFT SLIPS AVAILABLE FOR BOATS UP TO 20,000LBS
3 MILES TO THE BAY WITH **NO SPEED LIMIT!**



Call Today to Reserve Your Slip • 410-686-6998
1100 E. Riverside Ave, Essex, MD 21221

www.DourYachtSales.com

Chris • 443-877-7080

Tommy • 443-655-6099

Paul • 443-309-1340



DOUR YACHT SALES

N O R T H E A S T , M D



50' '1998 Viking Convertible
\$275,900



48' 1999 Ocean Yachts Super Sport
\$265,000



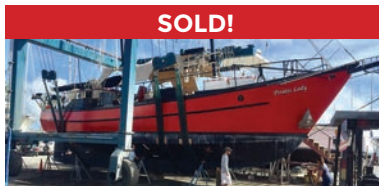
41' 2002 Tiara Yachts 4100 Open
\$209,900



36' 2000 Hinckley
\$179,000



Worldwide Yacht Sales | Yacht Charters | New Yacht Construction



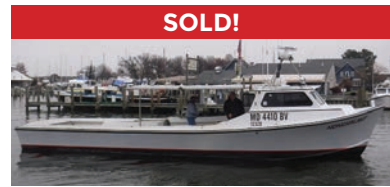
SOLD!

72' Trade Rover



SOLD!

50' Chris-Craft



SOLD!

48' Evans Boats



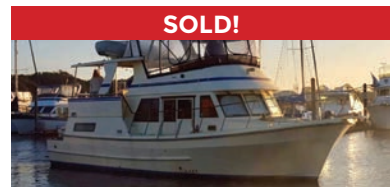
SOLD!

44' DeFever



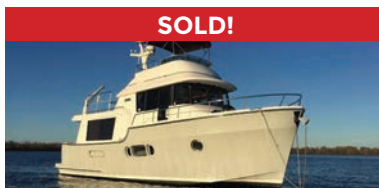
SOLD!

44' Gulfstar



SOLD!

42' Fu Hwa



SOLD!

40' Fathom



SOLD!

40' Hinckley



SOLD!

36' C&C



SOLD!

36' Bristol



SOLD!

32' Eagle



SOLD!

26' Sisu

List your boat with us and join our **SOLD list!**

To see more details about these and all other yachts around the globe, please visit our website below.

Annapolis, MD • St. Michaels, MD • Delaware City, DE • Deltaville, VA • Woodbridge, VA
Telephone: 410.919.4900 • Email: info@curtisstokes.net

www.curtisstokes.net

CLARKS LANDING

YACHT SALES



**2016 Sea Ray
510 Flybridge
\$999,995**

**2015 Pursuit 385
Offshore
\$334,900**

**2018 Cruisers
Yachts Cantius
\$1,789,450**

**2008 Grady White
Canyon 336
\$127,900**

**WE SPEED UP THE SALE BY
TAKING A TRADE ON YOUR
BOAT. CONTACT CLARKS FOR
A HASSLE-FREE EXPERIENCE.**

I was extremely impressed with the professionalism of the Clarks Landing NJ sales team. I was able to find the boat I was looking for and at a great deal! Even after the closing of my new boat, I was happy to have the staff at Clarks Landing list my other boat. They sold my boat in one week! I will only use Clarks Landing for any future boat sales or purchases.

- David, Clarks Landing Yacht Sales Customer

WANT TO SELL YOUR BOAT FAST

A successful brokerage program starts with exposure. Due to our size, Clarks Landing can offer more exposure than most other brokers.

Our experienced, dedicated team handles the entire transaction, including financing, marketing, demonstration rides, haul outs, estimates & more.

List your boat where it is or at one of our facilities.

- ☒ Free Land Storage Program
- ☒ In-Water Slips for Yachts
- ☒ Huge Marketing Budget
- ☒ Free Market Analysis
- ☒ We Take Trades
(Most Other Brokers Don't)
- ☒ Family-Owned over 40 Years

**DISCOVER THE CLARKS
LANDING DIFFERENCE**

ANNAPOLIS AREA

1442 Ford Road, Shady Side, MD 20764

(410) 867-9550

boatinfomd@clarkslanding.com

JERSEY SHORE

847 Arnold Avenue, Point Pleasant, NJ 08742

(732) 899-5559

boatinfonj@clarkslanding.com

WWW.CLARKSLANDING.COM

Authorized dealer for



See Color Photo on the Internet

42' 2019 BUDDY DAVIS 42 CC, Triple 425hp Yamaha Seakeeper, loaded, ready to fish, Call for Leftover Price, **609-368-1141 stoneharboryachts@gmail.com** **150995**

See Color Photo on the Internet

35' 1989 MAINSHIP Mediterranean, Crusader 454/350hp, Low engine hours (680hrs) and gen (790 hrs). Clean, well maintained, A/Cs. Great family boat, **\$22,500, 443-858-9882 cswags1@verizon.net** **151558**

See Color Photo on the Internet

29' 2003 SEA RAY AMBERJACK,

2 Mercruiser 350 hp 5.7L motors, 350 hours, great cruising or fishing, lift kept, well maintained

\$45,000

301-481-5017

drurylm@yahoo.com

151195

See Color Photo on the Internet

38' 2006 FORMULA 382 FASTEC, T/Merc 525 EFIs, ITS extension boxes, custom graphics, custom trailer, **\$131,995, 732-840-1100 sales@brennanboat.com** **148280**

See Color Photo on the Internet

34' 2011 PURSUIT 345 OS, Twin 250hp Yamahas, radar, autopilot, gen, AC/HT, ready to fish, **\$239,995, 732-840-1100 sales@brennanboat.com** **149753**

See Color Photo on the Internet

27' 2016 CHRIS CRAFT LAUNCH, Mercruiser 8.1L with low hours, Yacht Club Edition, **\$119,900, 732-899-8010 sales@schraderyachts.com** **151230**

See Color Photo on the Internet

37' 1998 SEA RAY 370 EXPRESS CRUISER, T/3126 Cats, factory hardtop, many recent updates, **\$101,995, 732-840-1100 sales@brennanboat.com** **151489**

See Color Photo on the Internet

32' 1986 TROJAN F32, Crusader 350, Shed-kept for 20 years, well maintained boat - full service records available for review. See internet site for more., **\$22,500, 610-444-3310 shopboss@4email.net** **151542**

See Color Photo on the Internet

27' 1988 BAYLINER 2655 CIERA,

Mercruiser, AC/HT, queen bed, sleeps 4-6, automatic head/sink/shower, stove, micro, fridge, double-walled fuel tank, SS Prop, **\$8,850**

609-351-9926

HollyfordEnterprisesInc @gmail.com

151310

See Color Photo on the Internet

36' 2002 SEA RAY 340, 8.1 Horizons, 198 low hours, excellent condition, fully equipped, offered at over \$10K below book value, in water

\$69,000

410-409-1369

tmlaujr@gmail.com

151309

See Color Photo on the Internet

31' 1980 BERTRAM FLYBRIDGE, T/6-cyl Cummin Dsls, custom windows, reasonable offers accepted, **JUST REDUCED! \$55,000 OBO, 908-309-4016 almarmarine1@gmail.com** **148434**

See Color Photo on the Internet

30' 2002 SEA RANGER 300 SUNDANCER, T/Merc 350 MPis, Bravo III, AC/HT, camper canvas, ready to go!, **\$53,995, 732-840-1100 sales@brennanboat.com** **151488**

See Color Photo on the Internet

30' 2004 MONTEREY 302CR, Twin 480hp Volvo Penta engines, generator, AC, windlass, bimini, much more, **\$49,900, 410-287-5100 lmarina726@comcast.net** **151636**

See Color Photo on the Internet

26' 2003 HYDRA-SPORTS 2600 VECTOR, excellent condition, ready to sell, **\$34,950 OBO, 908-489-5098 seaportpics@gmail.com** **151127**

See Color Photo on the Internet



25' 2018 GRADY-WHITE 257 FISHERMAN,

REDUCED TO SELL!!!!

T/F150 Yamahas, low hrs,
7/23 warranty, factory options,
Garmin GPS radar,
Icom 504 radio, outriggers, fish
inshore/offshore, family cruising,
water skiing, like new,
END OF SEASON SPECIAL!
\$119,000 BRING OFFER!

Call 302-226-3734 or 144975

See Color Photo on the Internet



22' 2005 CUSTOM BUILT Stambaugh pocket cruiser, 90hp
Honda, The FLOOZIE is a custom built pocket cruiser wood
boat from designer Stambaugh & Reinhardt with trailer, \$18,000,
254-216-1030 randybotix@outlook.com 151611

See Color Photo on the Internet



20' 1995 May-Craft, new Yamaha, \$14,950, 908-489-5098 151124

See Color Photo on the Internet



22' 1992 SHAMROCK CENTER CONSOLE, runs
great, gas engine, \$9,500, 908-489-5098 151035

See Color Photo on the Internet



20' 1987 BOSTON WHALER OUTRAGE, 2002 200hp
Mercury, low hours, dual axle trailer, \$7,500, 908-400-9987 markjcassidy@verizon.net 151490

See Color Photo on the Internet



24' 2016 ALBEMARLE 248, 350 Mag Mercruiser
(670), great fishing boat, \$59,900, 732-899-8010
sales@schraderyachts.com 151365

See Color Photo on the Internet



21' 2002 BAYLINER TROPHY CC, 200hp Mercury,
tandem Venture trailer, head, trim tabs, many ameni-
ties, Call Ernie, 410-952-7860 cbganderson@gmail.com 151436

See Color Photo on the Internet



**19' 2014 SAILFISH
1900 Bay Boat,**
115hp Yamaha outboard
with low hours,
\$32,000
484-844-7172
BrianMKellySailfish
@gmail.com

151432

See Color Photo on the Internet



23' 2016 MAKO 234 CC,
Twin 150hp Mercury 4-strokes,
with only 780 hours,
excellent condition!
\$68,000
732-272-8717
j.montanino56@gmail.com

151476

See Color Photo on the Internet



**20' 2008
Skeeter 20I,**
Yamaha 250 V-Max HPDI
Series 2,
3 bank battery charger,
2 Lowrance HDS 5's
12 Plano box storage
system, power tilt
\$9,000
918-498-8369
skeeterboat08
@aol.com

151518

See Color Photo on the Internet



23' 2002 TROPHY 2352 WA, 5.7L Merc I/O, marine
head, baitwell, 2004 Tidewater tandem trailer, \$14,900,
908-309-4016 almarmarine1@gmail.com 150630

Deadlines for Next Issue:

Chesapeake Bay

09.16.2020

New Jersey

09.23.2020

* By midnight

**Two 300hp Peninsula
6.2 Diesel Engines**
1230 hours with twin disc,
5055A 2:1 ratio
transmissions
\$9000 for pair
Call 610-682-4403
pelong4403@gmail.com

See Color Photo on the Internet



TOHATSU 150HP BFT 4-STROKE NEW, 5 YEAR WARRANTY!!! control and cables, tack & harness, key switch, water separator, aluminum prop, \$13,600, 908-309-4016 almarmarine1@gmail.com 150629

See Color Photo on the Internet



**(2) 2020
MERCUISER**
502 HO DTS, new take
outs, full warranty, boat
converted to diesel for
Sea Ray factory by
Vector Marine
\$12,500
410-215-7772
rsg11411@
gmail.com

151376

See Color Photo on the Internet



**38' 1989 ISLAND
PACKET**
Yanmar 44hp diesel,
338 hours,
one owner boat,
lightly used,
\$80,000
732-899-8010
sales@
schraderyachts.com

144832

MARINE TECHNICIAN TRAINING

RIDE THE CREST

to career success



ENROLL FOR TRAINING TO BECOME A PROFESSIONAL
MARINE SERVICE TECHNICIAN

Our in-depth program includes training in: Seamanship, AC & DC Electrical, ABYC Standards, Air Conditioning & Refrigeration, Mechanical Systems, Stern Drives/Transmissions, Computerized-Fuel Injected Inboard and Outboard Engines, Inboard, Outboard and I/O Systems, Electronic Diesel Engines (Cummins QSB 5.9 380 HP Common Rail Trainer), Fiberglass & Gelcoat Repair, Plumbing and Sanitation Systems.

Financial Aid for those who Qualify • Career Placement Assistance



CALL NOW

866-905-4278

www.autotraining.edu

900 Johnsville Blvd., Warminster, PA 18974



Technical Service Center

&



MARINE

Supported by
with Training Materials & Equipment

For required program disclosure information, please go to www.autotraining.edu/consumerinformation.



WATERFRONT MARINE

#1 GOLL AVE, SOMERS POINT, NJ ~ 609-926-1700

281 PRINCETON AVE, BRICK, NJ ~ "Featuring Chaparral & Carver" 732-202-6961

2822 SOLOMON'S ISLAND RD, EDGEWATER, MD ~ 443-949-9041

Premium Brands ~ Exceptional Service

WWW.WATERFRONTMARINE.COM



Robalo R302



Robalo R242



Chaparral 297 SSX



Carver Yacht 34 Coupe



028



250 Suncoast

- PREOWNED BOATS -



Located in Somers Point

2008 Robalo R305 Walkaround,
Twin Yamaha F250, \$114,900



Located in Somers Point

21' '15 Chaparral 21H20,
Merc I/O, trailer, \$32,900



Located in Somers Point

2012 Chaparral 284 Sunesta,
Volvo Penta 8.1 GI DP (400), \$64,900

BOWRIDERS & PONTOONS

33' '17 Chaparral 337 SSX, T/Merc 6.2L Axis	SOLD	22' '14 Bennington 2275 GCW, Yamaha F150, 2018 Load Rite trailer	Pending
30' '17 Chaparral 307 SSX, T/300hp Volvo	SOLD	22' '19 Monterey M22	SOLD
28' '12 Chaparral 284 Sunesta, Volvo Penta 8.1L 400hp	Pending	22' '06 Sea Ray 220	Pending
28' '14 Chaparral 284	SOLD	20' '09 Chaparral 205 SSI, Volvo Penta 5.0 GXI SX270, trailer	\$31,500
28' '16 Chaparral 284 Sunesta	SOLD	20' '11 Glastron GT205, Merc 5.0L 260	\$21,800
28' '12 Chaparral 287 SSX, 8.2L	Pending	20' '11 Stingray 208 LR	Pending
28' '15 Chaparral 287 SSX, Volvo Penta 430hp DP, loaded	Pending	20' '07 Cobalt Bowrider	Pending
28' '04 Chaparral 280 SSI	SOLD	19' '01 Chaparral 196 SSI	SOLD
27' '17 Avalon 2785 Catalina Platinum Funship, tri-toon, Mercury	\$54,900	19' '01 Chaparral 196 SSI	SOLD
27' '14 Chaparral 277 SSX, Volvo Penta 380 DP	SOLD	18' '11 Hurricane 188	SOLD
26' '16 Four Winns H260	\$64,900		
26' '09 Chaparral 264	SOLD		
26' '15 Monterey 264 FS	SOLD		
26' '05 Chaparral 260 SSI, Volvo Penta 8.1L 375hp	SOLD		
26' '18 Chaparral 264 Sunesta	SOLD		
25' '10 Chaparral 256 SSX, Volvo Penta 8.1L 385hp	\$38,900		
25' '19 Bennington Q Series, 300hp Yamaha	SOLD		
25' '06 Cobalt 250	Pending		
24' '17 Chaparral 246 SSI, Volvo Penta 300hp DP	SOLD		
24' '11 Chaparral 244 Sunesta	Pending		
24' '19 Chaparral 244 Sunesta	Pending		
24' '18 Chaparral 246 SSI	SOLD		
24' '18 Chaparral 2430 VRX	\$68,900		
24' '15 Chaparral 243 Vortex	\$49,900		
23' '17 Stingray 234 LR, Yamaha F250 Vmax, 97 hours	\$49,900		
23' '00 Chaparral 235 SSI Cuddy, Merc 5.7L EFI	SOLD		
23' '16 Manitou Oasis	SOLD		
23' '07 Monterey 234	Pending		

CRUISERS & CUDDY CABINS

38' '06 Cruisers Yachts 385 Motor Yacht	Pending
36' '11 Rinker 360 Cruiser	Pending
33' '12 Chaparral 330 Signaure	Pending
23' '88 Chaparral 235XLC, 5.7L Merc	\$7,900
22' '14 Chaparral 225 SSI, Volvo Penta 300DP, Load Rite trailer	\$49,900

FISHING BOATS

27' '20 Robalo R272	SOLD
24' '13 Robalo R247 DC	SOLD
21' '12 Cobia 210 WA, Yamaha F150, 60 hours, no bottom paint	Pending
20' '13 Robalo R207	SOLD
20' '06 Sea Pro 206 Dual Console, '16 Mercury 150XL 4-stroke, trailer	SOLD
20' '96 Trophy 2002 WA	\$8,900
19' '17 Yamaha 190 Center Console, High Output Jet, 70 hours	\$31,900
19' '15 May-Craft 1900 CC, Evinrude 115hp E-Tec, trailer	\$24,900



**AUTHORIZED
PARTS &
SERVICE**



**Full Service
Marina w/Slings &
Racks Available!**



Large Indoor Showroom!
OPEN 7 DAYS A WEEK

410.287.8280 | 448 MAULDIN AVE | NORTH EAST, MD 21901



Parts & Service | General Boat Repairs | High & Dry Boat Storage

WWW.ANCHORBOAT.COM

YAMAHA BUILT TO LAST

