

Free!



The Salty Dog[®]



CHESAPEAKE BAY EDITION

Published Every Other Week • Distributed in Maryland, Delaware, Southern Pennsylvania and Virginia

POWERBOATS & SAILBOATS ...Including Marine Services



34' 1986 SILVERTON CONVERTIBLE, 350hp Crusader, newer interior, canvas elbows & risers, electronics distributors (2003), great boat, in water, runs great, nicest of this vintage, \$12,000, 732-236-0905, hbkazin@gmail.com 153579



32' 2007 PURSUIT OFFSHORE 305, T/250hp Merc Verados, 760 hrs, AC/HT, sleeps 4, mico, stove, fridge, full head, live baitwell, ORs, loaded, well maintained, \$130,000, 732-814-0024, j_fasano@yahoo.com 152969



24' 2019 JEANNEAU NC 795, 17 hours, super loaded, sacrifice! \$119,500 302-945-2254 • anita@rudymarine.com



21' 2021 TIDEWATER 210 LXF, 200hp Yamaha, hard-top, light blue, 8'6" beam, 60 hours, electronics, canvas covers, custom trailer, lift kept, mint condition, \$68,500, 973-628-7117, ljtangorra@yahoo.com 153576

**List Your Boat
As Low As \$49!**

Go to www.thesaltydog.com
to get started!

Private Boat Ads Only



22' 1990 RHODES, refurbished 2016 with 2016 galv trailer and Yamaha OB, Intermax furling main, furling 130 genoa & more, \$16,500 410-647-2755 jschroll@msn.com 152520



2022 COBIA 350 CENTER CONSOLE Triple 300hp, \$Call • 302-436-1737 captain_glen@rt113boatsales.net



40' 2001 SEA RAY 400 SEDAN BRIDGE, 430 Cummins, low hours, loaded with accessories, \$169,900, 717-626-2680, fmi@dejazzd.com 152352



29' 2020 JEANNEAU 895 LEADER T/200hp Yamahas, super loaded, genset, AC & more, \$189,775 • 302-945-2254 • anita@rudymarine.com

Annapolis, MD • St. Michaels, MD
Deltaville, VA • Woodbridge, VA
Delaware City, DE

CONTACT US TODAY!

info@curtisstokes.net
410.919.4900

**CURTIS
STOKES**
& ASSOCIATES

www.curtisstokes.net

1-888-843-1585 • Private Boat Information on Page 18



SAY YOU SAW THIS IN THE SALTY DOG!

Rt. 113 Boat Sales and Service

Selbyville, DE 302-436-1737

www.Rt113BoatSales.net

f

You Tube

TAX FREE



COBIA from 20 - 35 ft.

Just Better Built in Every Way!

Your EXCLUSIVE Dealer

ALL OF MD, DE AND PARTS OF VA



PATHFINDER from 20 - 27 ft. **ANGLER DRIVEN**

Brokered Boats WANTED!

Clean, Late Models up to 35 ft. LOW FEES - GREAT RESULTS!



GARMIN

AUTHORIZED RESELLER

Certified Installer

BOAT TRAILERS AT WHOLESALE PRICING!



Tidewater TRAILERS

RT113BoatSales.net

HAUL OUT AND TRANSPORT SERVICES AVAILABLE

Call us for Details 302.436.1737

BOATS AVAILABLE WITH
SPECIAL ORDER DISCOUNTS & PRE-PRICE INCREASE*

- Cobia 220 CC powered by a F200 Yamaha
We have 7 more 220 CC available for 2022
- Cobia 240 DC powered by a F300 Yamaha
We have 1 more 240 DC available for 2022
- Cobia 280 CC powered by a Twin F200 Yamaha
We have 3 more 280 CC available for 2022
- Cobia 280 DC powered by a Twin 250NSB Yamaha
We have 2 more 280 DC available for 2022
- Cobia 320 CC powered by a Twin XF425 Yamaha
We have 2 more 320 CC available for 2022
- Cobia 330 DC powered by a Twin XF425 Yamaha
We have 2 more 330 DC available for 2022
- Cobia 350 CC powered by a Triple F300 Yamaha
Available in September with Special Order Discounts

Pathfinder Boats Available Model Year 2022
2005 TRS, 2200 TRS, 2400 TRS,
2500 HYBRID, 2600 TRS, 2700 TRS

* GET YOUR NEW BOAT THIS YEAR AND BEAT THE
TURN OF THE YEAR PRICE INCREASE GUARANTEED!

**Now is the Best Time
to CASH OUT!**

We handle Funding, Payoff, National MLS and
Transport-Delivery to Anywhere in the USA

Get your Boat Sold **FAST**
and for Top Dollar!

Clean late models, years 2005 and up
powered with Yamaha Outboard Motors

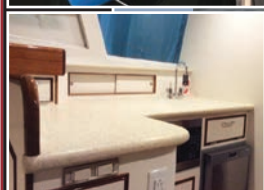
Upper Chesapeake Yacht Sales

John Curry • (610) 299-3598

www.upperchesapeakeyachtsales.com



31' 2013
Bertram Custom
Sportfish
\$395,000



One of the absolute finest 31' Bertram re-manufactured boats built by renowned Worton Creek Marina. The hull is a 1963 rock solid Bertram that was meticulously restored in 2013 at a cost in excess of \$500,000 and has been kept in a covered shed since completion now having approximately 160 hours on her Yanmar diesels. This is a must see for the discriminating Buyer looking to purchase a great fishing and cruising vessel that may also be considered a maritime "work of art". Boat truly shows as new!



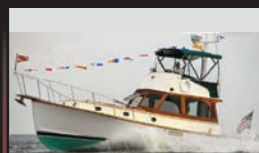
62' '03 Bruce Roberts Expedition Trawler, loaded and mint • \$1,399,900



40' '81 Bristol Sloop, diesel, mint, classic, \$55,000



37' '95 Sea Ray Sundancer, T/7.4L, gen, AC • \$59,900



36' '78/'07 Jarvis Newman FB • \$500K refit, 330 Cummins, gen, AC, mint • \$134,900



29' '84 Dyer Soft Top Express, 200hp diesel, very nice • \$64,900



28' '74 Bertram FB, newer 315 Inboards, AC, clean • \$24,900



27' '02 Rinker 270 Fiesta Vee, new engine & Bravo III, trailer available, very nice • \$27,900



27' '17 Scout 275 Dorado, T/200hp Yamahas, loaded, trailer, mint • \$159,900



18' '06 Four Winns Bowrider, 135hp Volvo, '17 trailer, nice • \$10,900



15' '06 Key West Center Console, Yamaha 4-stroke, trailer, mint condition \$10,900

38' '89 Sea Ray Aft Cabin, T/7.4L, gen, AC, very nice..... \$54,900
27' '02 May-Craft Pilothouse, T/'06 200hp E-Tec, trailer, nice \$42,900



Expect The Same
Superior Service From Our
Brokerage That You Get
From Our Marina

BOAT SALES & BROKERAGE
• Financing & Insurance Available •

WORTON CREEK MARINA

23145 Buck Neck Road • Chestertown, MD 21620

(410) 778-3282



WANT TO SELL YOUR BOAT FAST?

A successful brokerage program starts with exposure. Due to our size, Clarks Landing can offer more exposure than most other brokers.

Our experienced, dedicated team handles the entire transaction, including financing, marketing, demonstration rides, haul outs, estimates & more.

List your boat where it is or at one of our facilities.



**2016 Sea Ray
510 Flybridge
New Listing
Low Hours**



**2015 Pursuit 385
Offshore
\$334,900**

IN TODAY'S MARKET, YOUR BOAT WILL NEVER BE WORTH MORE THAN IT IS **RIGHT NOW. OUR EXPERIENCED BROKERS WILL SELL YOUR BOAT FOR TOP DOLLAR.**

Get A Free Market Analysis

www.ClarksLanding.com

- ✓ **Reduced Commissions**
- ✓ **Free Land Storage Program**
- ✓ **Huge Marketing Budget**
- ✓ **Family-Owned over 40 Years**
- ✓ **Free Drone Media Package**
for Listings over \$100K

LIMITED INVENTORY!!! *Buy Now & Cruise Later!*

Scan QR Codes with Your Phone's Camera for Details & Video Tours



on the Manasquan River
847 Arnold Avenue
Point Pleasant, NJ

732-899-5559 • www.ClarksLanding.com



WE HAVE BOATS, MOTORS & TRAILERS IN STOCK!


JEANNEAU

VIAGGIO

Bentley



IN STOCK

**2022 1095 Fly
T/300hp Yamaha**



IN STOCK

**2022 Diamante D 23 S
Triple Toon • Yamaha power**



IN STOCK

**2022 22' Bentley Rear Fish
115hp Yamaha**



IN STOCK

Also Available:
2022 6.5 Leader
175hp Yamaha

**2022 7.5 Leader
250hp Yamaha**



IN STOCK

**2022 Lago L 20 C
Yamaha power**



IN STOCK

**2022 Bentley 223 Navigator
150hp Yamaha**



**PRE-OWNED SPECIAL!
INCREDIBLE FIND!**

26' 2019 JEANNEAU NC 795,
super loaded, only 17 hours, turn key
\$119,500



IN STOCK

**2021 22R Triple Toon
150hp Yamaha**



IN STOCK

**2022 22' Bentley Rear Lounge
115hp Yamaha**



**PRE-OWNED SPECIAL!
INCREDIBLE FIND!**

2020 JEANNEAU 895
T/200hp Yamahas, super loaded,
genset, AC + more, **\$189,775**



**3 X 1
IN
STOCK**

2022 Aquasport 2100 • 150hp or 250hp



IN STOCK

**2022 20' Bentley LE
90hp Yamaha**



IN STOCK

**2022 20' Bentley 20 Cruise
90hp Yamaha**

ALL BOATS POWERED BY



Rudy Marine.com
Where Family Boating Begins

Delaware has
NO SALES TAX!
3 GREAT LOCATIONS!



REPOWER HEADQUARTERS



302-945-2254 • 32606 DuPont Blvd Dagsboro, DE 19969
302-999-8735 • 411 S. Maryland Ave. (Rt 4) Wilmington, DE 19804
443-995-3785 • 3033 Kent Narrows Way South, Suite 3 Grasonville, MD 21638





YAMAHA

Revs Your Heart®



Beacon Light Marina

825 Bowleys Quarters Rd. | Middle River, MD 21220

410-335-6200

beaconlightmarina.com | sales@beaconlightmarina.com

**WITH SO MANY WAYS TO HAVE FUN ON A YAMAHA,
*It's easy to find yours at Beacon Light Marina***



ALMARS

We Are A Full Service, Premier Mercury Outboard Repair Center! Let Our Certified Mercury Technicians Service Your Mercury Motor Needs!

LEFTOVER VERADO SALE!

CALL FREQUENTLY FOR UPDATED INVENTORY!

MOTORS ARE ARRIVING DAILY!



225hp
black • \$14,995



250hp
black • \$15,995



300hp
black • SOLD



300hp
white • \$18,995



350hp
Call for Great Deal!



350hp
Call for Great Deal!

We Now Offer
INJECTOR SERVICE
with
ONE Day Turnaround!



150
4-stroke
Black



150 ProXS
4-stroke
Black



175XL ProXS
4-stroke
Black



200
Sea Pro
Black



225XL
4-stroke
Black



250 XL
4-stroke
White

100's of Used Cowllings In Stock!
Call for Availability!

250XL PRO
VERADO 15,995
Only 1 Available

REMANUFACTURED OUTBOARD ENGINE SALE!

90hp - 250hp 1 Full Year Warranty

Starting As Low As \$5,495 Call for Details!

CALL US FOR GREAT DEALS ON NON-CURRENT POWERHEADS!

Call us for current pricing new current and noncurrent outboards
NO SALES TAX IN DELAWARE!

701 Washington St., New Castle, DE

302-328-8541

www.almarsoutboards.net

HOURS: Monday - Friday: 8am - 5pm
CALL FOR GREAT PRICING ON NEW & USED MERCURY OUTBOARDS

NO HIDDEN COSTS
NOT RESPONSIBLE FOR TYPOGRAPHICAL ERRORS



All prices good while supplies last!

Pricing includes all rebates.



Worldwide Yacht Sales | Yacht Charters | New Yacht Construction



1999 89' Custom - \$259,000
Mary Catherine Ciszewski - 804.815.8238



2006 43' Mainship - \$320,000
Jason Hinsch - 410.507.1259



1979 42' Post - \$63,000
Ed Pickering - 410.708.0633



2002 42' Symbol - \$289,000
Lars Bergstrom - 910.899.7941



1984 36' Uniflite - \$30,000
Ed Pickering - 410.708.0633



1985 36' Kadey-Krogen - \$114,500
Curtis Stokes - 410.919.4900



2000 36' Monk - \$169,000
Mary Catherine Ciszewski - 804.815.8238



1992 35' Luhrs - \$55,000
Tristan Weiser - 609.420.0469



1985 35' Markley - \$184,000
David Robinson - 410.310.8855



2015 30' Cutwater - \$219,000
Greg Merritt - 813.294.9288



2017 25' South Shore - \$174,500
Curtis Stokes - 410.919.4900



1937 17' Chris-Craft - \$95,000
Tristan Weiser - 609.420.0469

To see more details about these and all other yachts around the globe, please visit our website below.

Annapolis, MD • Rock Hall, MD • St. Michaels, MD • Delaware City, DE
Deltaville, VA • Woodbridge, VA
Telephone: 410.919.4900 • Email: info@curtisstokes.net

www.curtisstokes.net



23 Ultra



24 HFC



Powered by:



DANNY'S MARINE
(410) 228-0234 • www.dannysmarine.com
 Located on US Rt 50 (mile marker 86) • Chateau Drive near Linkwood, MD
dannysmarine@comcast.net

Limited Time Offers. Not all models qualify. See Participating Suzuki Marine dealer for details or visit www.suzukimarine.com
 ©2020 Suzuki Motor of America, Inc.



New York Yacht Sales

Contact Vince Schimmenti
 973.454.4670 • nyys2000@hotmail.com



VENTO 40 PICNIC BOAT



**Also Available with
 Twin Outboards
 Factory Direct
 Sales & Service**



New to the US and meticulously crafted to deliver speed and comfort in a modern vision of the picnic boat's timeless lines. Ready for a weekday afternoon, a weekend of the hook, or a week cruising to your favorite spot with all the modern conveniences of a luxury yacht.

So stunning from any angle you'll fall in love every time you walk down the dock, classic lines that never go out of style. There are also open and outboard models available. More information and details can be found on the web at **www.newyorkyachtsales.com**

ANNAPOLIS CRUISAIR, INC.

Family Owned & Operated for Over 50 Years

SALES • SERVICE • INSTALLATION



U-LINE
U-Line Icemakers
110/115vAC

We will meet or beat
any competitive
price quote for
these products!



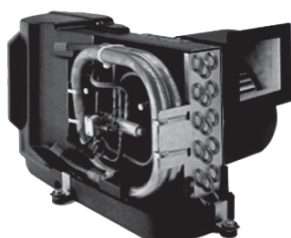
Espar

Marine Diesel
Heaters



Cruisair®

New Turbo
Air Conditioners • Heat Pumps



• We Have • BREATHE EASY AIR FILTERS

Sentry™
Cruisair

BATTERY
CHARGERS



SAFEST
CHARGER
ON THE
MARKET!

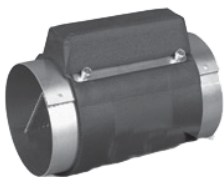
**Eskimo Ice
600 Ice Pump**

Provides up to 600 lbs. of fresh
ice in a day from your ships
water tank.



STINKY BOAT?

We Have **NEW**
Breathe Easy
Air Purifiers



→ **DOMETIC**

SPOTZERO®
Fresh Water Reverse Osmosis

Water Purification Systems



Vitrifrigo
REFRIGERATORS

WAECO
Adler/Barbour®



MARINE AIR SYSTEMS®

AIRRRRRRRRR

by Dometic GROUP



KOHLER.

- Generators -

Onan



Fischer Panda

2124 Renard Ct. • Annapolis, MD

(410) 224-0970 • (410) 974-6136 • Fax (410) 224-0050

www.annapoliscruisair.com




OWN THE BOAT OF YOUR DREAMS



Become the next “**Just Financed**”.
Apply online at **JJBEST.COM** or call **800-USA-1965**.

Offering low rates, long terms, and no prepayment penalties.
Simple application and quick funding.

Looking to refinance? We can help with that too.



**YOUR
ENJOYMENT
MADE EASY**

GEICO[®]
FOR YOUR BOAT

Get a GEICO quote for your boat and, in just 15 minutes, you'll know how much you could be saving. If you like what you hear, you can buy your policy right on the spot. Then let us do the rest while you enjoy your free time with peace of mind.

geico.com/boat | 1-800-865-4846

Some discounts, coverages, payment plans, and features are not available in all states, in all GEICO companies, or in all situations. Boat and PWC coverages are underwritten by GEICO Marine Insurance Company. In the state of CA, program provided through Boat Association Insurance Services, license #0H87086. GEICO is a registered service mark of Government Employees Insurance Company, Washington, DC 20076; a Berkshire Hathaway Inc. subsidiary. © 2020 GEICO 20_206641

HEROIC PERFORMANCE

SERVED IN 4 TANTALIZING FLAVORS

Engineered specifically for severe applications in a marine environment with the capability and durability to accommodate all your boating activities on a wide variety of vessels. The Raptor Series by Indmar offers superior craftsmanship in an exclusive line-up that defies every challenge, especially the test of time.



400



404 lb-ft of Torque
350 Horsepower



440



427 lb-ft of Torque
398 Horsepower



460



452 lb-ft of Torque
410 Horsepower



575



580 lb-ft of Torque
510 Horsepower

ENGINE
DISTRIBUTORS
INC. 

Indmar
MARINE ENGINES

800-220-2700 | www.edi-dist.com

RAPTOR
Indmar

ADVERTISERS INDEX

ALMARS.....	7	GEICO.....	12
ANCHOR BOATS.....	24	GOLDSBOROUGH'S MARINE.....	15
ANNAPOLIS CRUISAIR.....	10	GOOTEE'S MARINE.....	17
ATC AUTO/MARINE TRAINING.....	17	HF FISHER AND SONS.....	19
BEACON LIGHT MARINA.....	6	JJ BEST BANC & CO.....	11
BLAZING VISUALS.....	19	LIST YOUR BOAT.....	18
BOAT LIFTS UNLIMITED.....	14	NEW YORK BOAT SALES.....	9
CLARKS FLOATS.....	15	RT 113 BOAT SALES.....	2
CLARKS LANDING.....	4	RUDY MARINE.....	5
CURTIS STOKES.....	8, 22	UPPER CHESAPEAKE YACHT SALES..	3
DANNY'S MARINE.....	9	US POWER BOAT SHOW.....	16
ENGINE DISTRIBUTORS.....	13	WATERFRONT.....	23

THE LARGEST LOW PROFILE BOAT LIFT MANUFACTURER IN THE USA

**CALL
US FOR
YOUR LOCAL
DEALER!**



Choose The Right Boat Lift, Choose

- Low Profile Design • Low Maintenance • 2/5 Yr Warr.
- Outside Walkway • Galvanized Steel Construction
- Aluminum Cradles Available • Capacity 800-40,000 lbs. www.magnumlift.com

MAGNUM

BOAT LIFTS

Personal Watercraft Lifts

Fully
Insured

BOAT LIFTS UNLIMITED

410-674-3100 • 1-800-268-5911

**WE SERVICE
MOST MAKES
OF BOAT
LIFTS!**

Located in Odenton, MD, this full-service boat lift manufacturer has a network of over 180 distributors serving the Chesapeake Bay, Great Lakes and Atlantic Coast with Magnum Boat Lifting Products. Boat Lifts Unlimited is dedicated to customer satisfaction through prompt, courteous service on most existing boat lifts and timely installation of new boat lifts. Quality materials, attention to detail and innovative design have made Boat Lifts Unlimited one of the largest boat lift manufacturers in the U.S.



"Where Happiness Is Just A Boat Ride Away"

www.crisfield.com/gold



2022 MODELS IN STOCK
\$965!

96RT 17-20 3100
Galv. Roller \$3,695



Trailer
Blowout
Special!



16170076DWT
Galv. Bunk \$2,695

18150076DWT
Galv. bunk \$2,895



**OUTBOARD
SALE!**

2.5HP MH \$699
4HP MH \$1,375
5HP MH \$1,550

2021 18 Lookout
Skiff
Open Tiller Package,
Boat Only
LIST PRICE
\$13,295



Goldsborough's Marine

709 W. Main St., Crisfield, Maryland • Ph.# 410-968-0852 • Email: merc71@verizon.net

CLARKS FLOATS

PIER & PILE

443-871-0436 • CLARKSFLOATS@GMAIL.COM

CLARKS FLOATS
PIER & PILE

- Floating Docks
- Pile Driving
- Re-Decking

MMCLB #390 I



8x16 KAYAK DOCK



8x12 KAYAK ACCESS

**Any Custom
Size Float
Available!**



Kayak Floats
Dock Sections • Work Rafts
Swim Platforms • Gang Planks
SS Fasteners • #1 P.T. Lumber
Perma Float Floats
Composite Decking

Deale, MD



WELCOME BACK TO ANNAPOLIS



UNITED STATES POWERBOAT SHOW

OCTOBER 7-10, 2021
CITY DOCK, ANNAPOLIS, MD



SHOW UPDATES + TICKETS: AnnapolisBoatShows.com



**Fishin' Boats From
Fishin' Folks**

LATE SEASON SAVINGS!

**Yamaha Warranty
& LOW HOURS**

\$159,900



2006 Pursuit 3480 Drummond
Island Runner Twin Yamaha F300
4.2L Offshore V6, Includes Trailer

\$16,995



2009 Tracker Pro Team 190 TX
Mercury 75 4 Stroke, Includes Trailer

\$29,900



2019 Mako Pro 17CC Skiff
Includes Trailer

\$24,995



2019 G3 18SC Camo
Yamaha F70LA, Includes Trailer

\$36,995



2018 G3 Bay 20 DLX
Yamaha VF115LA, Includes Trailer

GOOTEE'S MARINE

South of Cambridge On Maryland's Eastern Shore
1439 Hooper's Island Road, Church Creek, Maryland



800-792-0082

Gootees.com

MARINE TECHNICIAN TRAINING

RIDE THE CREST to CAREER SUCCESS



ENROLL FOR TRAINING TO BECOME A PROFESSIONAL
MARINE SERVICE TECHNICIAN

Our in-depth program includes training in: Seamanship, AC & DC Electrical, ABYC Standards, Air Conditioning & Refrigeration, Mechanical Systems, Stern Drives/Transmissions, Computerized-Fuel Injected Inboard and Outboard Engines, Inboard, Outboard and I/O Systems, Electronic Diesel Engines (Cummins QSB 5.9 380 HP Common Rail Trainer), Fiberglass & Gelcoat Repair, Plumbing and Sanitation Systems.

Financial Aid for those who Qualify • Career Placement Assistance



CALL NOW

866-905-4278

www.autotraining.edu

900 Johnsville Blvd., Warminster, PA 18974

Supported by



with Training Materials & Equipment

For required program disclosure information, please go to www.autotraining.edu/consumerinformation.

FREE LISTING WITH PHOTO ON THE INTERNET

PRIVATE AD RATES

- ☐ INTERNET ONLY UP TO 1 YEAR..... \$39⁰⁰
☐ 3 ISSUES NO PHOTO CLASSIFIED..... \$49⁰⁰
☐ 3 ISSUES WITH COLOR PHOTO WITH COLOR PHOTO ON INTERNET..... \$59⁰⁰
☐ INTERNET FEATURE ADD ON 4 WEEKS AVAILABLE WITH AD PURCHASE ONLY! ON THE SALTY DOG HOME PAGE..... \$49⁰⁰
☐ FRONT COVER..... \$40⁰⁰
☐ FACEBOOK FEATURE..... \$15⁰⁰
☐ PUBLICATION MAILED TO YOU..... \$3⁰⁰

TOTAL

FRONT COVERS ARE BASED ON AVAILABILITY

- ☐ CHECK ☐ MONEY ORDER ☐ DISCOVER
☐ MASTERCARD ☐ VISA ☐ AMERICAN EXPRESS

CC#

Expiration Date _____ Security Code _____

Advertiser's Name

Address

Phone

Where did you pickup "The Salty Dog"?

Store _____ Town _____

Fill out the description form below, **up to 125 characters (including spaces & punctuation) of advertising**. Please put one character per space beginning with the motor. Include a check, money order or credit card, and mail to us with a good quality COLOR photograph of your boat. Photos will only be returned if accompanied by a self-addressed stamped envelope.

AD COPY

FT. _____ YR. _____

MANUF. / MODEL _____

MOTOR _____

ACCESSORIES _____

LOCATION OF BOAT _____, _____, _____
City State Zip Code

PRICE _____

PHONE # _____

EMAIL _____

Send to: The Salty Dog
254 Brick Blvd • Suite 1
Brick, NJ 08723

888-843-1585

Fax (732) 477-9000 • Email: info@thesaltydog.com

No refunds after Ad is processed. • Advertiser will be responsible for \$20 fee on returned checks.

YOUR BOAT LISTING CAN ALSO BE SUBMITTED ON THE INTERNET www.thesaltydog.com

SPECIAL Boat Shows Pg. 16
FEATURES Private Boat Ads Pgs. 20-21

SUBSCRIPTION CHESAPEAKE BAY

SALTY DOG is published Bi-weekly 25 times a year.

Papers are mailed **FIRST CLASS**. Your first issue will be mailed within 1 week. To subscribe, just fill in the amount of issues and multiply by \$2.00*

No. of issues _____ x \$2.00* = Total Cost _____

☐ CHECK ☐ MONEY ORDER ☐ MASTERCARD ☐ VISA

Credit Card No. _____

Exp. Date _____

Signature _____

Name _____

Address _____

City _____ State _____ Zip _____

Telephone _____

*Canada Subscription Add 10% - Bermuda Subscription Add 30%
 Outside the Continental USA Add 50% • Credit Cards Only Outside USA



Mail To: THE SALTY DOG, 254 Brick Blvd • Suite 1, Brick, NJ 08723



A Bi-weekly Publication for
 Powerboats, Sailboats, Marine
 Equipment, Supplies, Services,
 Waterfront and Photo Ads

For More Info on Display Ads or Internet Listings

Call 888-843-1585 • Fax (732) 477-9000

info@thesaltydog.com • Mon.- Fri. 9:00 am to 4:00 pm

WINTER STORAGE COVERS

Light Weight Industrial Strength Material

MORE ECONOMICAL THAN "SHRINK WRAP"/LIGHTER AND LESS EXPENSIVE THAN CANVAS/BETTER FITTING THAN A TARP

So light and easy to put on, it requires no more than two people to cover your "investment" • 1 Year Warranty for Fit and Workmanship

No More Breaking Your Back Or The Bank!

www.hffisherandsons.com

H.F. FISHER & SONS, INC.

875 Industrial Highway Unit 8 • Cinnaminson, NJ 08077

Since 1954

Call Us Now...or Call Your Shrinkwrap Guy Again and Again and Again

1-800-624-2868 • 1-856-461-2883

BLAZING  **VISUALS**

CUSTOM BOAT GRAPHICS, WRAPS, & REG NUMBERS



BLAZINGVISUALS.COM

CALL CASEY - 732.267.6822

CASEY@BLAZINGVISUALS.COM

SAY YOU SAW IT IN THE SALTY DOG   /BLAZING_VISUALS

**PROFESSIONAL DESIGN TEAM
HIGHEST QUALITY MATERIALS**

3M

A
ARLON

Real Gold

See Color Photo on the Internet



46' 2000 MARKLEY 46, 3208, T/3208 435 hp 5500 hrs new ac gen updated electronics ready to fish coast guard inspected current coi 32 passengers, \$195,443-324-4982 Randy.Bailey@Whiting-Turner.com 153586

See Color Photo on the Internet



33' 1987 CRUISERS 336 Ultra-Vee, 340hp Mercruiser 454s, More info online 580 hours, hydraulic steering, t-tabs, windlass VHF Sleeps 6, HW Galley Head 16K AC/H New Carpet, Seat, Top, 2 Garmins, \$14,999 • 610-608-6989 christopher_laird@hotmail.com 153467

See Color Photo on the Internet



28' 1988 BERTRAM FLYBRIDGE, T/Captain's Choice Crusaders, less than 400 hours, 11' beam, new fuel tank, full enclosure, electronics, \$35,995, 908-309-4016 almaraine1@gmail.com 152807

42' 1975 GRAND BANKS CLASSIC TRAWLER,
(2) John Deere 135hp, AC, fridge, freezer, radar, DF, inverter, stereo, battery charger, hot water heater, 8kw generator
\$37,500
443-534-9249

See Color Photo on the Internet



28' 1997 HYDRA-SPORTS 2750 WA, Evinrude 225, Motors are 2000 year. Two sets viper stainless props. New load rite trailer included., \$33,000, 610-212-6823 turbocat416@gmail.com 153509

See Color Photo on the Internet



32' 2006 SEA RAY SUNDANCER 320, T/6.2 320hp Bili drives, AC, gen, new bellows & newer manifold & risers, mantianed buy owner, 396 hours, \$119,000 609-709-2159 r.mastro@comcast.net 153363

See Color Photo on the Internet



27' 2008 Everglades Boats 270 CC, Twin Suzuki 250 HP. Very clean, well documented, Trailer Included. 570 Hours, \$109,500, 301-412-8929 Makoman47@aol.com 153419

See Color Photo on the Internet



40' 2006 FORMULA 400 SS, T/Volvo Dsls, many updates, loaded, \$219,000, 609-693-9423 tidesendmarina1@gmail.com 152565

See Color Photo on the Internet



27' 1997 ALBEMARLE CUDDY, T/5.7L Volvo I/Os, electronics, excellent condition, \$33,500, 609-729-4774 sales@pier47.com 153609

See Color Photo on the Internet



36' 1989 TROJAN 12M CONVERTIBLE, T/671 Ti Detroit Diesel engines, Onan 8kW diesel generator, galley down, \$59,500, 732-899-8010 sales@schraderlyachts.com 153259

See Color Photo on the Internet



31' 2000 SEA RAY 310 SUNDANCER, T/Merc 5.7L, Bili, gen, windlass, remote spotlight, power vent, ready to cruise! \$59,900 OBO, 917-817-5084 info@deepwaterlanding.com 153035

See Color Photo on the Internet



26' 1986 CHAPARRAL XCL278, Jasper 350 C.I.D, Use for fishing, trolling around with the family or both, \$7,202-923-0551 mm_case@hotmail.com 153629

See Color Photo on the Internet



35' 2019 PURSUIT OS355 OFFSHORE, Triply Yamaha F300, loaded, generator, like new, \$499,900, 609-368-1141 stoneharboryachts@gmail.com 153517

See Color Photo on the Internet



28' 2016 SEA RAY, 400hp Merc I/O, Kohler gen, grill, stereo, Raymarine VHF/GPS/sonar, micro, fridge, AC, \$130,000, 732-899-8010 sales@schraderlyachts.com 153611

See Color Photo on the Internet



26' 2002 COBIA CENTER CONSOLE, 500 hours w/ new \$6K trailer, new canvas, new electronics, turn key, everything works, 908-489-5098 Call or Text 152665

See Color Photo on the Internet



**26' 2000
AQUASPORT
250 EXPLORER,**
looking for a PROFESSIONALLY MAINTAINED,
AFFORDABLE FISHING
MACHINE? You found it!
250 Evinrude Ficht
w/SS prop, 144 gallon
\$19,900
732-966-2522
kngwal@aol.com

153591

See Color Photo on the Internet



23' 2016 SEA BORN SX239, Yamaha F300hp, 226 hrs, Sea Foam Green hull, t-tabs, SS anchor, porta potti w/dockside pumpout, leaning post, Simrad VHF radio, (2) GPS/sonar units, stereo, **\$65,000, 732-899-8010 sales@schraderyachts.com 153612**

See Color Photo on the Internet



22' 1992 SHAMROCK CENTER CONSOLE, runs great, gas engine, Call or Text Rob, **\$9,500, 908-489-5098 Call or Text 153252**

See Color Photo on the Internet



21' 2021 Tidewater 210 LXF, Yamaha 200hp, hardtop, light blue, 8'6" beam, 60 hrs, elects, canvas covers, custom trailer, kept on lift, mint condition, **\$68,500, 973-628-7117 ltangorra@yahoo.com 153576**

See Color Photo on the Internet



21' 2017 BAYLINER Element F21, Mercury 150, Exc cond, low miles w/warranty, trailer, 2 Helix depth finders, stereo, 2way radio, splash curtains, helm cover, bottom paint, **\$35,000, 717-676-5182 jtorchia@riverrockacademy.net 153258**

See Color Photo on the Internet



20' 2001 GRADY-WHITE Grady-White, Yamaha 150 Saltwater Series, Like-new Grady White 2001 New Maxwell Windless, Loran HDS Gen 3 Chartplotter FF, Sunbrella Bimini Top New, **\$16,500, 443-275-3803 bennarburt1@gmail.com 153583**

See Color Photo on the Internet



16' 20 TRACKER Pro 160, Mercury 40hp, 5 hours since new, 2 batteries, Minkota Edge trolling motor, Garmin Echomap GPS, Lowrance Hook fish finder, like new., **\$16,900, 609-949-2099 dmontagano@outlook.com 153482**

See Color Photo on the Internet



**34' 1988 BENETEAU
FIRST 345,**
Volvo 2001 18hp, great
racer/cruiser with solid diesel,
new mainsail and working jib
and spinnaker. Needs work
inside, appraised at \$12k
\$9,750
703-850-4654
tomrries@gmail.com

153547

See Color Photo on the Internet



25' 1976 MAKO 256, Evinrude E200TXECM, Clean solid boat with a shallow draft but can handle the open water as well. 2007 LR trailer. Garmin 546s plotter, **\$19,800, 215-768-1916 jgroth024@gmail.com 153469**

See Color Photo on the Internet



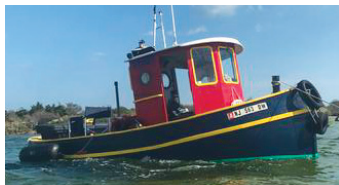
24' 1999 Baja H2X, Big Block 7.4L MPI, 390 hrs, custom painted ODs, no bottom paint, trailer, runs like new, **\$26,900, 610-513-3331 genebaja@comcast.net 152978**

See Color Photo on the Internet



21' 1990 CHRIS CRAFT 213, Evinrude 200HP, Evinrude 200hp, over \$4,000 spent to make ready, with trailer, **\$9,000, 443-553-3228 rljohnson@zoominternet.net 153575**

See Color Photo on the Internet



20' 1983 CUSTOM BUILT Mini Tugboat, 20hp Diesel yanmar keel cooled dry stack exhaust inc trailer in water. **\$18,000, 609-519-3583 harbormj@yahoo.com 153457**

See Color Photo on the Internet



15' 1981 A M F Sunbird,
3.5hp, fully equipped, really nice,
centerboard may be stuck but
probably can be unstuck, trailer
\$1,200
443-866-5824
km777heavem@gmail.com

153388

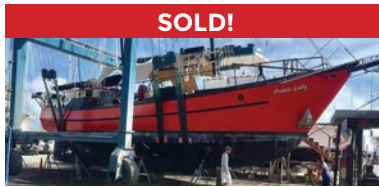
See Color Photo on the Internet



24' 1996 SEA RAY Sundancer, Rebuilt 5.7 mercruiser motor in 2019, risers /manifolds new in 2020, trib tab pumps replaced in 2020, extended swim platform, **862-684-6107 Mpetrickomike@gmail.com 153497**



Worldwide Yacht Sales | Yacht Charters | New Yacht Construction



SOLD!

72' Trade Rover



SOLD!

50' Chris-Craft



SOLD!

48' Evans Boats



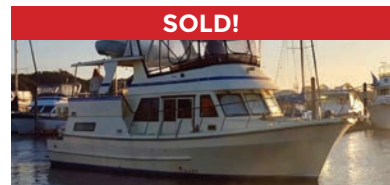
SOLD!

44' DeFever



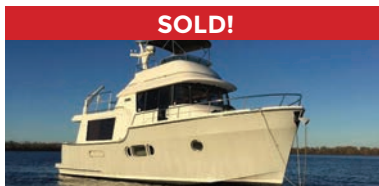
SOLD!

44' Gulfstar



SOLD!

42' Fu Hwa



SOLD!

40' Fathom



SOLD!

40' Hinckley



SOLD!

36' C&C



SOLD!

36' Bristol



SOLD!

32' Eagle



SOLD!

26' Sisu

List your boat with us and join our **SOLD** list!

To see more details about these and all other yachts around the globe, please visit our website below.

Annapolis, MD • St. Michaels, MD • Delaware City, DE • Deltaville, VA • Woodbridge, VA
Telephone: 410.919.4900 • Email: info@curtisstokes.net

www.curtisstokes.net



WATERFRONT MARINE

#1 GOLL AVE, SOMERS POINT, NJ ~ 609-926-1700

281 PRINCETON AVE, BRICK, NJ ~ "Featuring Chaparral & Carver" 732-202-6961

2822 SOLOMON'S ISLAND RD, EDGEWATER, MD ~ 443-949-9041

Premium Brands ~ Exceptional Service

WWW.WATERFRONTMARINE.COM

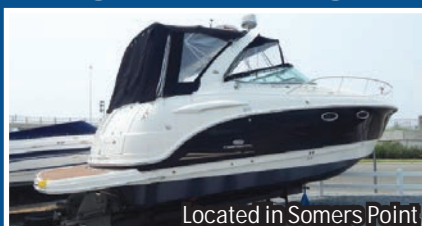
ORDER YOUR BOAT NOW!



- PREOWNED BOATS -



Located in Somers Point
2008 Century 2200 Center Console
Yamaha F200 Outboard, lift kept • **\$45,900**



Located in Somers Point
2006 Chaparral 330 Signature
T/Volvo Penta 320hp • **\$110,000**



Located in Somers Point
2012 Cherubini 24
Merc 5.7L 300hp • **\$149,900**

BOWRIDERS & PONTOONS

28' '12 Chaparral 287 SSX, 8.2L.....	Pending
28' '20 Chaparral 280 OSX.....	SOLD
28' '18 Chaparral 287 SSX.....	SOLD
28' '20 Chaparral 280 OSX, Twin Yamaha F200.....	\$155,000
28' '17 Chaparral 284 Sunesta, Volvo Penta 380 DP.....	\$89,900
28' '18 Chaparral 287 SSX, Volvo Penta 380 DP.....	SOLD
27' '10 Chaparral 276 SSX, Volvo Penta 8.1L 375 duo prop.....	Pending
26' '13 Chaparral 264 Sunesta BR, Volvo Penta 320 DP.....	Pending
24' '18 Chaparral 246 SSI, Volvo Penta V8 300DP.....	\$82,900
24' '12 Cherubini 24, Merc 5.7L 300hp.....	\$149,900
24' '11 Chaparral 246 SSI, Volvo Penta 5.7L 300hp DP.....	Pending
24' '18 Chaparral 2430 VRX.....	Pending
24' '15 Chaparral 243 Vortex.....	Pending
23' '04 Yamaha AR230 Jet Boat, w/trailer.....	Pending
22' '16 Chaparral 224 Sunesta BR, Volvo Penta 280hp.....	\$56,000
22' '16 Chaparral 223 Vortex VRT Jet Boat.....	\$44,500
22' '11 Chaparral 224 Sunesta.....	SOLD
20' '11 Stingray 208 LR.....	SOLD

CRUISERS & CUDDY CABINS

36' '11 Rinker 360 Cruiser.....	SOLD
33' '06 Chaparral 330 Signature, T/Volvo Penta 5.7 DP.....	\$99,900
33' '12 Chaparral 330 Signature.....	SOLD
29' '19 Jeanneau NC 895 Offshore, T/Yamaha F200XCA OBs.....	\$189,000

24' '03 Chaparral 240 Signature, Volvo Penta 5.0L 260 DA.....	\$24,800
23' '88 Chaparral 235XLC, 5.7L Merc.....	SOLD

FISHING BOATS

35' '12 Everglades 350 LX, Triple Yamaha 350s.....	\$239,800
33' '06 Chaparral 330 Signature, T/Volvo Penta 320hp.....	\$110,000
30' '17 Robalo R302 CC, T/Yamaha 300hp.....	Incoming
27' '16 Cobia 277 Center Console, T/Yamaha F200.....	\$129,900
27' '19 Robalo R272, T/Yamaha F200, lift kept, trailer.....	Pending
24' '17 Robalo R247 DC, Yamaha F300.....	Pending
24' '18 Robalo R246 Cayman CC, Yamaha F300, trailer.....	SOLD
24' '18 Robalo 246 Cayman CC, Yamaha F300.....	Pending
22' '08 Century 2200 CC, Yamaha F200 OB, lift kept.....	\$45,900
20' '18 Clearwater 2000 CC, Evinrude 150 E-Tec, trl.....	Pending
20' '18 Robalo R207 Dual Console, Yamaha F150.....	SOLD
20' '13 Robalo R200, Yamaha F150hp, trailer.....	SOLD
20' '19 Robalo R200, Yamaha F150, trailer.....	SOLD
20' '03 Sea Fox 205 DC.....	SOLD
19' '11 Trophy 1903 CC, Merc 150hp.....	SOLD
19' '17 Yamaha 190 CC, High Output Jet, 70 hours.....	SOLD
18' '17 Robalo R180, t-top, Yamaha F115, trailer.....	SOLD
18' '16 Robalo R180, Yamaha F115, trailer.....	SOLD
16' '17 Robalo R160 Center Console, Yamaha F70.....	\$22,900



**AUTHORIZED
PARTS &
SERVICE**



Build Slots Available

Order Your boat for Spring Delivery!

OPEN 7 DAYS A WEEK



FOUR WINNS



KEY WEST



Scout
Discover More...



G3 Boats



**Need a Trailer?
We Have Them
In Stock!**

YAMAHA BUILT TO LAST

410.287.8280

ANCHOR
BOATS
North East, Maryland

www.AnchorBoat.com

448 MAULDIN AVE | NORTH EAST, MD 21901

Parts & Service
General Boat Repairs
High & Dry Boat Storage