

Free!



The



## BOATS AND MARINE EQUIPMENT

Distributed throughout New Jersey, Eastern Pennsylvania, Staten Island & Northern Delaware

### SEASONS GREETINGS



24' 2004 STINGRAY 240LR, 300hp I/O, prof maint'd, runs well, pump out porta potti, dual batts, bimini convert to full encl, sink, Bluetooth, \$15,000, 609-607-7254, jsawczak9@gmail.com 151903



FROM  
THE  
SALTY  
DOG  
STAFF



40' 1980 VIKING CONVERTIBLE, Mechanic's Special! 671 Naturals, great family/fishing boat, port engine needs to be rebuilt, gen, windlass under 2 years old, \$19,038, 732-500-2032, rlino926@gmail.com 152038



NEW 2020 SEA FOX 328 COMMANDER  
1 available, no trailers • \$199,800  
302-945-2254 • anita@rudymarine.com



29' 2018 MONTEREY 295 SPORT YACHT, 8.2L I/O, 160 hours, loaded, trailer, \$140,000 OBO, 971-817-5084, esproviero@googlemail.com 151848



13'4" ESTUARY BARNEGAT BAY SNEAKBOX BY DAVE CLARK, canvas winter dodger & summer dodger, 2019 Yamaha 4-stroke add'l \$2,200, \$3,800 • w/2019 Sea Lion trl \$4,300, 609-709-5329, thomaswcook@comcast.net 149569



28' 2002 TRITON CENTER CONSOLE,  
\$39,500 • Call or Text Rob 908-489-5098



33' 1999 FOUNTAIN 10M, T/502 fuel injected rebuilt in '19, TRS drives, Velvet drive trans, IMCO helm, external hydraulic steering, 80+ MPH, Myco trailer, \$29,900, 609-693-9423, tidesendmarina1@gmail.com 151683



Like New Cape Horn 24XS  
Twin Yamaha's 150's (395 hours)  
2013 24 CAPE HORN 24XS  
includes winter & spring prep, financing available  
\$89,900 • Call or Text Rob 908-489-5098

Now Is The Perfect Time To Shop Your Insurance Premium  
with The Professionals at Bay Marine

**BAY MARINE**  
Yacht Insurance

**888-718-3900**

[www.bayagency.net](http://www.bayagency.net)

See Our  
Display Ad on  
Page 31

[www.thesaltydog.com](http://www.thesaltydog.com) • 732-714-8400

# Experience an Ultimate Pilot & Cabin Boat



All new for 2020  
25' 

Starting at  
**\$999.00\*** month



## Northcoast Boats

Northcoast 28'



Starting at  
**\$1,199.00\*** month

Northcoast 23'



Starting at  
**\$499.00\*** month

Northcoast 21'



Starting at  
**\$399.00\*** month

# 25% OFF

## YAMAHA OUTBOARDS

CALL TODAY

up to 25% off  
IN STOCK SELECT MODELS

### Call today 732-681-3303

\*Prices will vary depending on credit score. Prices based on 10-15% discount. Rates are subject to change. Call for details.

Text Rob 908-489-5098

SEAPORT INLET MARINA  
610 5th Ave Belmar, NJ



# Cape Horn Boats - UNSINKABLE

## 32XS



Come for a  
Ride today!



17' 22' 24' 27' 31' 32' 36'



NJ'S Exclusive Dealer  
Best riding, quality boat  
on the market!

Cape Horn 22'



300HP YAMAHA

Starting @

**\$399\***

/MONTH

Cape Horn 24'



Starting @

**\$649\***

/MONTH

Cape Horn 27'



Starting @

**\$749\***

/MONTH

\*ALL UPGRADES INCLUDING HARD-TOP, CAPT SEATS & ANY OTHER ADD ON ARE ADDITIONAL COST.

\*TRAILER ARE NOT INCLUDED \*TAX, P&F, LICENSING FEE ADDITIONAL COSTS. SEE DEALER FOR DETAILS

Text Rob 908-489-5098 Office 732-681-3303

**SEAPORT INLET MARINA**  
610 5th Ave Belmar, NJ

## ADVERTISERS INDEX

A LOT CLEANER.....	65	HOFFMANS YACHT SALES.....	18
ACTION YAMAHA .....	34	INMAR MARINE .....	28
ALL ABOARD MARINE TRANSPORT .....	65	iTEC CONSULTANTS.....	55
ALL POINTS MARINE SERVICES .....	15, 31	JARVIS MARINE .....	9
ALMAR MARINE LLC.....	51	JERSEY CAPE CUSTOM .....	44
ALMARS OUTBOARD.....	43	JERSEY CAPE YACHT SALES .....	45
ANCHOR MARINE.....	40	JERSEY COAST MARINE.....	65
ATC AUTO/MARINE TRAINING CENTER.....	52	JERSEY DEVIL MARINA .....	18
ATLANTIC COASTAL WELDING.....	8	JJ BEST BANC & CO.....	42
ATLANTIC COUNTY MARINE TRANSPORT.....	64	LANOKA HARBOR MARINA.....	52
ATLANTIC HIGHLANDS.....	8	LAUREL HARBOR MARINA .....	38
ATLANTIC LIFTS & DOCKS.....	53	LIST YOUR BOAT .....	56
ATLANTIC SODABLAST.....	64	LOCKWOOD BOAT WORKS.....	59
BAKER'S MARINE GROUP .....	33	M AND M DOCK KING .....	49
BALTIC MARINA.....	55	MARINE TECHNOLOGIES .....	65
BAY AGENCY .....	31	MARINERS MARINA.....	59
BAYWOOD MARINA .....	32	MARINERS SUN HARBOR .....	53
BLAZING VISUALS .....	60	MB MARKLAND CONTRACTING.....	64
BOAT REMOVAL .....	64	MID-ATLANTIC MARINE LLC.....	64
BRISTOL CANVAS FABRICATION .....	65	NEW JERSEY OUTBOARD .....	20-21
BRY'S MARINE .....	19	OCEAN BEACH MARINE CENTERS .....	63
BURKE AGENCY.....	50	PIER 47 MARINA.....	11
C&C MARINA.....	59	POLYDOCK PRODUCTS .....	39
CAPE HARBOR MARINE.....	24-25	R.J. LAUER BOAT HAULING.....	65
CAPTAIN'S LICENSE CLASS .....	64	RIPTIDE MARINE CENTER.....	7
CASSIDY'S BRENTONWOOD MARINA.....	65	RUDY MARINE.....	41
CDN MARINE SERVICE.....	48	SCHOONER ISLAND MARINA .....	36-37
CLARKS LANDING.....	68	SCHRADER YACHT SALES/CANAL POINT.....	12-14
COASTAL BOAT SALES .....	54	SEAPORT INLET MARINA .....	2-3
COMPLETE MARINE TRANSPORT.....	64	SEAPORT MARINA.....	50
COTY MARINE .....	66-67	SHERMANS BOAT BASIN.....	48
CURTIS STOKES.....	62	SHIP TO SHORE MARINE DETAILING.....	50
CUSTOM REBUILT CARBURETORS .....	64	SHIP TO SHORELINE TRANSPORT .....	64
D&R BOATWORLD.....	17	STACER'S MOBILE MARINE.....	65
DEEP CREEK COVE MARINA.....	23	STATEWIDE MARINE.....	5
DEEP WATER LANDING .....	22	STONE HARBOR YACHT SALES .....	10
DILLONS CREEK MARINA .....	30	TIDES END MARINA .....	28
DISTINCTIVE INTERIORS.....	33	TOMS RIVER BENTLEY .....	32
DRB MARINE LLC .....	38	TOMS RIVER YAMAHA .....	27
EAST COAST MARINE BROKERS.....	61	TOW BOAT US .....	53
EAST DOVER MARINA.....	16, 51	UTSCH'S MARINA.....	60
FISHER CANVAS PRODUCTS .....	55	VALHALLA BOAT SALES.....	6
GATEWAY MARINA.....	29	WATERFRONT MARINE.....	35
GOOD LUCK POINT MARINA .....	26	WAVE ARMOR .....	58
HANCE AND SMYTHE.....	46-47, 61	WEHRLIN BROTHER MARINA.....	38
HOBBY LOBBY .....	51	WIRE WIZARD .....	64





**STATEWIDE  
MARINE  
SERVICES, LLC**  
at Key Harbor Marina

**609.693.9355**

2 Point Road  
Waretown, NJ 08758

[www.statewidemarine.com](http://www.statewidemarine.com)



**ALL BOATS DISPLAYED ARE IN STOCK & READY TO GO!**



**203 DUAL CONSOLE**  
115hp Yamaha



**223 DUAL CONSOLE**  
150hp Yamaha



**243 DUAL CONSOLE**  
Yamaha 200hp



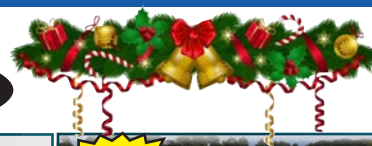
**191 HYBRID**  
115hp V-Maxx



**2102 LEGACY**  
150hp Yamaha



**28XS**  
T/200hp Yamaha



**B20CCR • 115hp Yamaha**



**DX20 • 115hp Yamaha**



**2021 DX 22 • 150 Yamaha**



**2021 B20CCR • 115 Yamaha**

*South Bay*  
Pontoons 20' - 26'

**Many Models Available To Choose From! Call for Details!**

**2020 523 FCR2**



**150 Yamaha**

**2021 222 CR**



**115 Yamaha**

**SEA BORN**



**2021 SX 239**  
**250 Yamaha, T/Simrad**



# CONTENDER



**valhalla**  
Boatworks



\*Payments based on 15% down, 15 year term and qualified credit score.



**2019 Contender 35ST,**  
Triple Yamaha 300hp, full equipped  
with Garmin elecs, **\$409,000**



**2016 Contender 30T,**  
T/Yamaha 300XCA, 272 hrs, t-top,  
outriggers, **\$189,900**



**2019 Contender 35ST,**  
Triple 350hp Verados, Marlin tower,  
**\$389,000**



**2020 Contender 39ST,**  
Triple Yamaha 300hp, loaded, elecs,  
like new, **\$475,000**



**2017 Bayliner XR7,**  
150hp Mercury 4-stroke, 90 hours,  
bimini, **\$42,000**



**2015 Contender 39 ST,**  
Triple F350hp Yamahas, **\$359,900**



**2015 Boston Whaler 370 Outrage,**  
Just In!  
**\$359,900**



**2019 21' Boston Whaler**  
210 Montauk • **\$79,900**



**2015 Scout 300 LXF,**  
T/Yamaha 300XCA, 340 hours, t-top,  
GPS, AP, radar, **\$185,900**



**2018 Boston Whaler 330 Outrage**  
T/Verado, loaded, low hours,  
**\$269,000**



**2018 32' Cape Horn 32XS,**  
T/Yamaha 300hp, turn key, **\$225,000**



**2014 32' Contender 32 ST,**  
T/Yamaha 300hp, full electronics  
package, **\$195,900**



**2014 19' Boston Whaler**  
170 Montauk • **\$31,900**



**2018 27' Grady White 271 Canyon**  
**\$189,900**



**2020 33' Southport 33FE**  
Triple Mercury Verado 350s,  
**\$379,000**

**SELLING YOUR BOAT? LIST WITH US! WWW.VALHALLABOATSALES.COM**

Barnegat Bay Marina  
"Base of the Mantoloking Bridge"  
29 Mantoloking Rd • Brick, NJ 08723

**732-704-3035**

**valhalla**  
BOAT SALES

**YAMAHA**

5724 Route 9  
"On The Bass River"  
New Gretna, NJ 08224

**609-296-2388**



# ORDER NOW FOR SPRING DELIVERY!

## HAPPY HOLIDAYS!



**Up to  
6 Year  
Engine  
Warranty  
FREE**

# CAROLINA SKIFF

**#1 Dealer in the  
Tri-State Area!**



**162-178-192 JLS**



**17-21 LS**



**23 LS**



**21 ULTRA**

# SEA CHASER

**HUGE FACTORY REBATES!**

**Innovative. Performance. Versatile.**



**20 HFC**



**22 HFC**



**24 HFC**

# STINGRAY Boats



**192 SC**

Yamaha power, cockpit cover, stereo, loaded, **\$Call**



**212 SC**

Yamaha power, cockpit cover, stereo, loaded, **\$Call**



**201 DS**

Yamaha power, cockpit cover, stereo, loaded, **\$Call**



**231 DC**

Yamaha power, cockpit cover, stereo, loaded, **\$Call**

## - Pre-Owned Specials -



**2018 Stingray 206 CC**, 2018 Yamaha F150, loaded, SS ski tow bar, bimini top, livewell, leaning post, Garmin GPS/FF, stereo, warr til 5/2023, potti, **\$34,995**



**2016 Stingray 214 LR**, Yamaha F150, bimini, full cover, stereo BT, fresh H2O, **\$33,499**



**2019 Sea Chaser 22 HFC**, 150hp Evinrude, warranty til 2024, GPS, FF, livewell, trailer, **\$47,995**



**2020 Stingray 231 DC**, F-200hp Yamaha, warranty til 2025, bimini, ski tow bar, step in head, **\$47,995**

# Riptide Marine Center

[www.riptidemarinecenter.com](http://www.riptidemarinecenter.com)

856 Route 9 • Bayville, NJ 08721 • 732-228-7202

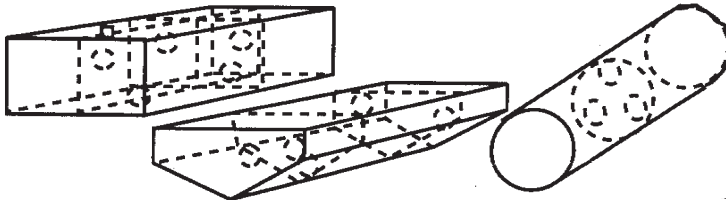


# MARINE FUEL TANKS

[www.speedytanks.com](http://www.speedytanks.com)

## Any Size - Any Shape

Aluminum Tanks For Gas or Diesel  
Tested & Built To U.S.C.G. Spec.



**5 DAY  
TURNAROUND**

**800-434-TANK**

OR FAX A DRAWING

1-732-269-7992

**ATLANTIC COASTAL WELDING INC,**

Bayville, NJ

## REPAIRS

Fuel Tanks • Engine Blocks  
Cavitation Plates  
Trim Tabs – Skegs ...  
Guaranteed To Look &  
Perform Like New

UPS



# 2021 SLIP SPECIAL!

**SELECTED SLIPS AVAILABLE**

**23' - 30' Slips**

**Starting at \$1,610**

New  
Jet Ski  
Slips  
Available!

Sailboat  
Moorings  
Available!

***Transient Slips • Fuel***

***Pump Out Service***

***3 Miles to Ocean - No Bridges***

***Atlantic Highlands Municipal Harbor***

**732-291-1670**

**[ahharbor@ahnj.com](mailto:ahharbor@ahnj.com) • <http://ahnj.com/ahnj/Harbor/>**



# JARVIS MARINE

www.jarvismarine.com

234 Radio Road  
Tuckerton, NJ 08087  
**609-294-1140**

## HOLIDAY BLOWOUT SALE **EVINRUDE** G1 AND G2! UNBEATABLE DEALS ON E-TEC REPOWERS!

**GLASSTREAM**

**- LEFTOVER SPECIALS -**

**BLUEWATER**  
SPORTFISHING BOATS, INC.



**LEFTOVER 36' Glasstream**  
no power, loaded, elects • \$110,000 **OR**  
Triple 300hp Yamahas, loaded, elects • \$185,000



**LEFTOVER 2150 CC,**  
9 year engine warranty • \$56,000

### 2021 BOATS ON ORDER!



**23 Pilothouse**



**20 Cape Classic**



**2300 CCX**



**EVINRUDE**



Over 10 Years!

**E-TEC™**



**YAMAHA**



**SEE US FOR ALL YOUR WINTERIZATION  
PARTS & SERVICE NEEDS!**

**- Quality Pre-Owned Boats, Motors & Trailers -**

26' '96 Robalo WA, T/225hp Johnson, trailer .....	\$Call
25' '90 Hydrasports WA, 2004 250hp Evinrude w/new powerhead, 30 hours .....	\$11,995
23' '87 Grady White WA, 1994 225hp Mercury Optimax, trailer .....	\$12,900
23' '05 Sea Fox CC, 150hp Merc .....	\$14,900
23' '08 South Bay Tri-Toon, Volvo 220hp I/O .....	\$19,995
19' '17 Clearwater Outcast, 150hp E-Tec .....	\$15,995
2016 Evinrude E-Tec 50hp, low hours, controls .....	\$4,000
2016 Evinrude E-Tec 50hp .....	\$3,500
2013 Evinrude E-Tec 75hp, tiller, fresh water .....	\$4,000
2013 Evinrude E-Tec 115hp, 25" shaft .....	\$4,500
2015 Evinrude E-Tec H0 135hp, 25" shaft .....	\$6,000
Pair of 175hp E-Tecs, with rigging, will separate .....	Pair \$15,000
2003 Tandem Bunk Trailer, 22' - 23' .....	\$900

**Open 7 Days A Week • Mon-Sat 8am - 5pm • Sun 8am-3pm • Stop In and Talk to Our Sales Staff Today!**





609-368-1141  
[www.stoneharboryachts.com](http://www.stoneharboryachts.com)

⚓ Sales ⚓ Service ⚓ Slips



**Order Your  
2021 Boat  
Now!**

**Everglades®**





# Pier 47

marina

*making the water more fun*



## YAMAHA

### RESERVE YOUR 2021 SLIP & RACK STORAGE NOW!

Master Mechanic on Duty!

Full Line  
Yamaha Marine Dealer

609-729-4774 • WWW.PIER47.COM • WILDWOOD, NJ 08260

Full Service Marina!

# 2021 BOATS ARRIVING DAILY!

## RESERVE YOURS NOW FOR SPRING DELIVERY!

**CAROLINA  
KIFF**

**World Cat**

**NauticStar**



16' - 23' Available



23' - 40' Cats Available



19' - 28' Available

**Kawasaki**

**YAMAHA**

**YAMAHA**



Full Line Dealer



Full Line Dealer



Full Line Dealer



**A BETTER WAY TO BOAT**

*Call Now To Set Up  
A Demo Ride!*



**280 DC-X**



**320 DC**



**255 DC**



**230 DC**

**COME EXPERIENCE A WORLD CAT TODAY!**

**SCHRADER YACHT SALES**

**on the Pt Pleasant Canal**

**1723 Bay Avenue • Point Pleasant, NJ 08742**

**Sales • 732-899-8010**



Visit  
**[www.schraderyachts.com](http://www.schraderyachts.com)**  
To See Our Inventory of New & Used Boats





# Chris ★ Craft®

Experience our full range of boats at  
[www.chriscraft.com](http://www.chriscraft.com)

FUN FOR 2 OR PARTY OF 8  
CALYPSO 26



ALL NEW HARDTOP  
CALYPSO 30



New Jersey's  
Exclusive  
Dealer!

ONE CENTER CONSOLE  
REDEFINES THE SEGMENT.

THE CATALINA 34



**SCHRADER YACHT SALES**  
**Sales • 732-899-8010**

Visit our Website at: [www.schraderyachts.net](http://www.schraderyachts.net)

on the Pt Pleasant Canal  
1723 Bay Avenue  
Point Pleasant, NJ 08742



**YAMAHA**

**Full Service Marina Offering Everything from Expert Detailing, Expert Fiberglass and Paint Repairs and Complete Engine Repairs and Repowers on Yamaha, Mercruiser and Mercury.**

*Offering over 85 years of combined experience with Yamaha Master Technicians on staff*



*Proudly Serving the East Coast for 40 Years!*



*Ship's Store and Showroom*



**MERCURY**  
MerCruiser  
**VERADO**  
**YAMAHA**

FACTORY AUTHORIZED  
PARTS • SERVICE • WARRANTY

**Call for Service at 732-899-1797 • Pat Barry, Service Manager**



*Chris★Craft®*

**SCHRADER YACHT SALES**

**on the Pt Pleasant Canal**

**1723 Bay Avenue • Point Pleasant, NJ 08742**

**Sales • 732-899-8010**







# All Points Marine Services

*Your trusted boating experts*



NJ's Largest Honda  
Re-Power Center!



**25% OFF  
IN STOCK**



**HONDA ENGINES**



**HONDA**  
**MARINE**

**3.99% FINANCING**  
ON NEW HONDA OUTBOARDS

Up to 84 months

**HONDA**  
**MARINE**  
The Power Of Boating

**848-232-4292 • [sales@allpointsmarineservices.com](mailto:sales@allpointsmarineservices.com)**

**320 Hawthorne Ave (Rt 35 North) • Point Pleasant Beach, NJ 08742**

Visit **[www.allpointsmarineservices.com](http://www.allpointsmarineservices.com)**

Always wear a personal flotation device while boating and read your owner's manual. 2020 American Honda Motor Co., Inc.®

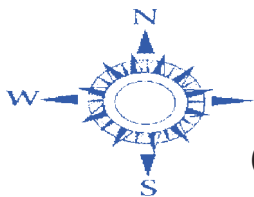


LIVE THE  
**SEA-DOO®**  
LIFE

Remember  
to Buy  
Where You  
Ride!

**Act fast. Ride fast.**

**2.99% financing for 36 monthst**  
on select 2021 Sea-Doo models



**East Dover Marina, Inc.**

**605 Fischer Blvd. Toms River, NJ 08753**

**732-270-1104**

**[www.eastdovermarina.com](http://www.eastdovermarina.com)**



**B.E.S.T.**  
Extended Service Term

©2020 Bombardier Recreational Products Inc. (BRP). All rights reserved. \*, TM and the BRP logo are trademarks of BRP or its affiliates. In the U.S.A., products are distributed by BRP US Inc. Offer is valid in select markets only, from September 11, 2020, to October 15, 2020. Eligible units are select 2021 Sea-Doo® watercraft models sold and warranty-registered during the promotional period. The terms and conditions may vary and these offers are subject to termination or change at any time without notice. † Financing as low as 2.99% APR for 36 months: Eligible units are select new and unused 2021 Sea-Doo models purchased from a participating BRP dealer. For example, on a purchase of an eligible unit where the amount financed is \$10,000, your down payment is \$0 with 36 monthly payments for tier A and B customers only: \$290.77 each. Interest rate is 2.99% [ANNUAL PERCENTAGE RATE 2.99% (E)]. Tier A and B customers only. The above financing programs are offered by Sheffild Financial, a division of Trust Bank, FDIC member. Approval, and any rates and terms provided, are based on creditworthiness. Tiers will be based on the customer's credit score obtained by Sheffild Financial. Rates advertised are based on tier A and B customers with credit scores of 700 or higher. An origination fee of \$0 will be added to the amount financed in the above example. Other fees may apply. BRP is not responsible for any errors, changes or actions related to financing provided by Sheffild Financial. Down payment may be required. [E] means estimate. Financing as low as 2.99% APR for 36 months: The foregoing financing program is offered by Roadrunner Financial, Inc. Neither BRP US Inc. ("BRP") nor its affiliates shall be held responsible for this financing program as they relate to this program. This is not an offer of credit. Not all customers will qualify for the above listed program. Approval, rates, minimum purchase requirements and terms advertised are based upon a minimum [700] credit bureau (FICO®) score and overall creditworthiness. FICO® credit score, key factors and other credit information are based on data from Experian® and may be different from other credit scores and other credit information provided by different bureaus. UCC filing fee may be charged. Offer not valid for units used for commercial or business purposes. All applicants are subject to credit approval. Other qualifications and restrictions may apply. Minimum amount financed: \$1,500. Maximum amount financed: \$50,000. Other financing offers are available. Offer subject to change without notice. Financing promotions void where prohibited. Carefully read the operator's guide and safety instructions. Observe applicable laws and regulations. Always wear appropriate protective clothing, including a personal flotation device and wet suit bottoms. Riding, alcohol and drugs don't mix. See your authorized BRP dealer for details and visit Sea-Doo.com.



**HAPPY  
HOLIDAYS!**

# Model-Year TURN OF THE YEAR

**HAPPY  
NEW YEAR!****ROBALO****Great Trade-In Allowances**

Everyone knows the best time to purchase your next new boat is

**RIGHT NOW!**

Save THOUSANDS on many remaining 2020 models or take advantage of factory incentives on most 2021s

**STEIGER  
CRAFT****Low Rate Financing Options****CROWNLINE****Big Discounts on all 2020's****Ranger****Order Now for  
Spring Delivery**

Browse and board in complete comfort, in our spacious indoor  
**HEATED SHOWROOM**

**FINSEEKER****Quality Used Boats In-Stock**

Both Locations Open Year-Round

Route 70 East

**BRICK, NJ****732-840-2020**

at Brennan Boat Sales &amp; Marina



www.dnrboatworld.com

Route 22 East

**GREEN BROOK, NJ****732-968-2600**

Main Headquarters &amp; Showroom



# Hoffman's

## 732.528.6200

608 Green Ave • Brielle, NJ 08730

[www.HoffmansBoatSales.com](http://www.HoffmansBoatSales.com)

WE  
TAKE  
TRADES!



# SPORTSMAN

WE  
FINANCE  
BOATS!

## LOCK IN YOUR 2021 BEFORE IT'S TOO LATE!

212 Open  
Yamaha power



MSRP: \$74,230

Internet Sale Price: \$51,910

232 Open  
Yamaha power



MSRP: \$114,285

Internet Sale Price: \$81,840

231 Heritage  
Yamaha power



MSRP: \$103,695

Internet Sale Price: \$74,310

**BROKERAGE BOATS WANTED! LIST WITH US! FISH BOAT SPECIALISTS!**



# YAMAHA



## Tritoon Year End Blowout Sale!

Special Prices Good Thru Dec. 31<sup>st</sup>

SALE PRICE  
INCLUDES FREE  
INDOOR 2020  
WINTER STORAGE!

# HARRIS®



**2020 Harris Solstice 230 Tritoon**

Mercury 250L Verado DTS/PAS V8, rear lounge floor plan w/entertainment center, Performance pkg, Level 3 w/ski tow bar, prestige trim level, saltwater pkg, Delta Tower w/black bimini, total light pkg (interior/exterior), JL Diamond sound system, fridge

**Call for Special Price!**



**2020 Harris Sunliner 230 Tritoon**

Mercury 150XL EFI 4-stroke w/hydraulic steering, rear lounge floor plan w/dual helm seats, Performance pkg, Level 2 w/ski tow bar, Premier trim level, saltwater pkg, 12' black bimini, interior lightning pkg, JL stereo upgrade pkg

**Call for Special Price!**



**2020 Harris Cruiser 210 Tritoon**

Mercury 150XL EFI 4-stroke w/hydraulic steering, rear lounge floor plan, Performance pkg Level 2 w/ski tow bar, Premier trim level, saltwater pkg, 12' black bimini, interior lightning pkg, JL stereo upgrade pkg

**Call for Special Price!**

## Full Service Marina

1118 Route 542 • Egg Harbor City, NJ

**609-850-1768 • [www.JerseyDevilMarina.com](http://www.JerseyDevilMarina.com)**



**BRY'S MARINE**

HWY 35 • NEPTUNE, NJ

**732-775-7364****www.brysmarine.com****SALES  
SERVICE  
PARTS**


**OPEN:**  
**MON - SAT.**  
**9:00 - 5:30**  
**Closed SUN**

**DuraNautic BOATS**

See  
the new  
DuraNautic  
Duke Jons  
In Stock!

**YOUR *EVINRUDE* SERVICE & PARTS SPECIALISTS**BRP Platinum Dealer BRP Factory  
Authorized & Trained Technicians**YOUR TRAILER HEADQUARTERS!****HUGE  
SELECTION!**

Motorcycle



Enclosed



Hydraulic Dump

Utility and  
Landscape

Boat

**May-Craft**  
The Perfect Craft for Your SportALL MAY-CRAFTS  
INCLUDE EVINRUDE  
REBATE PROGRAM PRICING!

2021 Maycraft 1900 CC  
*includes Evinrude Rebates \$1,200*  
white hull, 2020 Evinrude 115hp - Full Factory  
Warranty, t-top, 2019 Load Rite 3100lb trailer



2021 Maycraft 2000 CC  
*includes Evinrude Rebates \$1,500*  
white hull, 2020 Evinrude 150 G2 E-Tec - Full Fac-  
tory Warranty, t-top, 2021 Load Rite 2700lb trailer



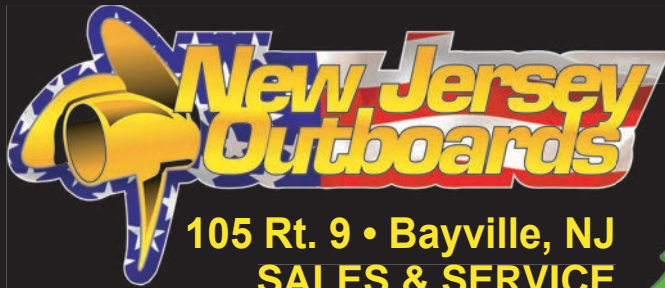
2004 Maycraft 1820 CC  
2000 Evinrude 90hp (just serviced - new plugs & gear oil),  
VHF radio, Garmin FF, Bluetooth AM/FM, bimini top,  
2003 Ventuer trailer

**TOHATSU**  
outboards2.5hp to 20hp In Stock  
5 Year Engine Warranty**IN STOCK!**Reliable  
4-Stroke Power

Best Value &amp; Price in Outboards Today!







**105 Rt. 9 • Bayville, NJ  
SALES & SERVICE**

**www.njoutboards.com**



**732-505-3002**

**WINTER  
HOLIDAY CLEARANCE  
SALE!**



**29' '07 Monterey 298SS,**  
T/350 Merc I/Os, radar arch,  
**\$59,900**



**27' '01 Regal 2760 Commodore,**  
Twin I/Os, needs work,  
**\$10,995**



**27' '06 Glastron GS279 Cruiser,**  
5.7L Volvo, bimini, covers,  
**\$15,995**



**25' '19 Crownline E255XS,**  
Mercury 250hp 4-stroke, low hrs,  
trailer, like new, **\$89,995**



**25' '19 Nauticstar 25XS,**  
T/150hp Yamaha 4-strokes, mint,  
low hours, **\$99,995**



**25' '19 Parker 2540 DC,**  
T/Yamaha F200, 100 hours, lift kept,  
loaded, hardtop, **\$149,995**



**25' '14 Sanpan 2500 Bar,**  
triple tube, 350hp Yamaha 4-stroke, 140  
hrs, loaded, **\$49,995**



**24' '16 Aquapatio AP240CB,**  
tritoon, Yamaha 150hp 4-stroke, super  
clean, well equipped, **\$46,995**



**24' '20 Hurricane Sundeck 2486 OB,**  
Yamaha 250hp V-Max 4-strokes, GPS, DF,  
FF, bimini, like new, **\$64,995**



**24' '14 Premier Sunsation 240,**  
Mercury 115hp 4-stroke, bimini, GPS, FF,  
DF, **\$27,995**



**24' '19 Yamaha 242 SE Limited,**  
T/Yamaha Jet, wakeboard tower, trailer,  
**\$69,995**



**23' '17 Sportsman 232 Open,** 200hp  
Yamaha 4-stroke, low hrs, lift kept, elec,  
**\$61,995**



**23' '17 Century 2301 CC,**  
Yamaha 250hp 4-stroke, GPS, VHF, DF,  
loaded, **\$62,950**



**23' '20 Sea Hunt Ultra 239SE,**  
Yamaha 250hp 4-stroke, loaded, like new,  
**\$85,995**



**23' '04 Sea Fox 230 CC,**  
Mercury 150hp 2-stroke, t-top, livewell,  
**\$17,995**



**23' '12 Crownline 236 CR,**  
5.0L Merc, trailer,  
**\$34,995**



**22' '15 Sea Chaser 22 HFC,**  
Evinrude 175hp, trailer,  
**\$41,995**



**21' '20 Hurricane Sundeck 217 OB,**  
Yamaha 150hp 4-stroke, GPS, DF, FF,  
bimini, covers, like new, **\$46,995**



**21' '20 Sea Hunt Ultra 211,**  
150hp Yamaha 4-stroke, electronics,  
t-top, loaded, **\$51,995**



**21' '04 Sea Boss 210 WA,**  
2016 E-Tec, bimini, GPS,  
**\$23,995**



**21' '13 Sea Born NX21,**  
Yamaha 150hp 4-stroke, trailer, GPS,  
**\$24,995**



**20' '06 Sea Hunt 207 Victory WA,**  
Yamaha 150hp 4-stroke,  
new bimini, GPS, **\$24,995**



**20' '16 Sea Chaser 20 HFC,**  
135hp E-Tec, nice options, runs great,  
**\$36,995**



**18' '19 Parker 1801 CC,**  
Yamaha 115hp 4-stroke, GPS, trailer,  
won't last, **\$31,995**



**17' '06 Key West 172 CC,**  
90hp Yamaha, trailer,  
**\$9,795**





105 Rt. 9 • Bayville, NJ  
SALES & SERVICE

www.njoutboards.com

732-505-3002



**TIME IS RUNNING OUT!**  
**ORDER YOUR 2021 BOAT NOW!**

ALL NEW!



2021 Godfrey Monaco  
255 SFL

All New!  
Here to See!



2021 Sea Hunt  
Ultra 265 SE



2021 Sea Hunt  
Ultra 229



2021 Sea Hunt  
Ultra 219

ALL NEW!



2021 Hurricane  
235 QB

20' LOA Boat!



2020 Parker 1801  
Starting Price \$32,915\*

23' LOA Boat!



2020 Parker 21 SE  
Starting Price \$53,607\*

\$54,900\*



2020 Parker 2100 CC,  
200hp Yamaha 4-stroke,  
Stock #PA2020

\*Plus freight & prep

**NEW YAMAHA ENGINE SPECIALS**

**2020 250 XBLF YO475 - \$18,906\* • 2020 200XCA FK - \$12,942\***

**Certified  
Marine  
Repairs!**

**732-776-5992**

1 Main Street  
Avon-By-The-Sea, NJ 07717  
**SLIPS • SALES • SERVICE**

# DEEP WATER LANDING



**FULL SERVICE MARINA**  
— AVON-BY-THE-SEA, NJ —

[www.deepwaterlanding.com](http://www.deepwaterlanding.com)

email: [info@deepwaterlanding.com](mailto:info@deepwaterlanding.com)



## LIFETIME HULL WARRANTY

**ON THE WAY!**



**25' 2021 Admiral 250 EX**  
T/150hp Honda 4-strokes

**ON THE WAY!**



**22' 2021 Admiral 220 EX**  
200hp Honda 4-stroke

**UNSINKABLE!**



# HONDA

---

# MARINE

**Reserve 2021 Slip Now!**

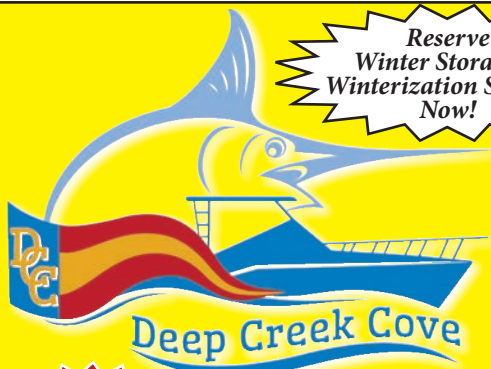
*Full Service Marina • Located on the Shark River  
1/2 Mile to the Ocean with Direct Inlet Access  
30,000lb Travelift • Certified Clean Marina  
All Floating Docks • Experienced Technicians*

**Reserve Winter Storage Now!**



Always wear a personal flotation device while boating and read your owner's manual. 2020 American Honda Motor Co., Inc.®





Reserve  
Winter Storage &  
Winterization Services  
Now!

DeepCreekCoveMarina.com

**732-223-0400**

381 Brielle Road Manasquan, NJ 08736

info@deepcreekcove marina.com

**FULL SERVICE  
MARINA!**



Honda  
Premier  
Dealership

Honda  
True 5 Year  
Warranty

**WE ARE NJ'S EXCLUSIVE DEALER FOR**



BOATS!

Unsinkable  
with A Lifetime  
Hull Warranty

**Defiance Boats Teamed Up with the Most Dependable  
Outboard Motor on the Market!  
Defiance & Honda, Perfect Together! Perfect for You!**

**SALE \$174,500**

**JUST  
SOLD!**

Includes  
16" Simrad & VHF

**29' 2019 Guadalupe**

Twin Honda V6 250 IST (electric shift),  
boat is loaded up



**\$64,950**

READY TO GO!

**22' 2020 Admiral 220NT**

150hp Honda 4-stroke

## USED BOAT SPECIALS!



**2018 Monterey  
295 Sport  
Yacht,**  
8.2L I/O, 160  
hrs, loaded,  
trailer,  
**\$140,000  
OBO**



**2000 Velocity  
260,**  
454 500hp  
Mercruiser  
Bravo I, loaded,  
new interior,  
280 hrs, trailer,  
**\$31,500**



**HONDA  
MARINE**

Always wear a personal flotation device while boating and read your owner's manual. 2020 American Honda Motor Co., Inc.®

# CAPE HARBOR MARINE SERVICE, LLC

4 Diamond Road Rio Grande, NJ 08242

**609.889.0911**[www.capeharbormarine.com](http://www.capeharbormarine.com)

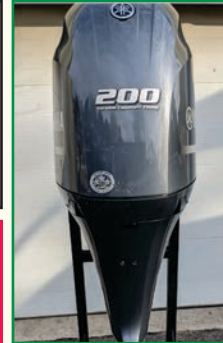
## MOTORS • MOTORS • MOTORS!

### All Sizes of Mercury Available!

**New 300hp Verado  
IN STOCK & READY TO GO!**  
*Call for Special Price!*



SEVERAL PRE-OWNED  
MOTORS AVAILABLE  
CALL FOR DETAILS



2014  
200hp  
Yamaha  
4-stroke  
**\$12,500**



2019 70hp  
Yamaha,  
low hours,  
**\$7,000**

NEW  
**LOADRITE**  
TRAILERS  
**IN STOCK &  
READY TO GO!**



## PRE-OWNED BOATS



2005 Mako 17,  
115hp Mercury • **\$10,500**



2020 Key West 203 FS,  
150hp Yamaha XB, like new • **\$43,000**



2016 Carolina Skiff 19DLV, 2017  
90hp 4-stroke, Load Rite trl • **\$26,900**



1985 Grady White Overnighter 20,  
150hp Mercury OB, hardtop • **\$10,500**

**MERCURY**  
Portable Engine Clearance Sale!

**LOADRITE**

**YAMAHA**



# CAPE HARBOR MARINE SERVICE, LLC

4 Diamond Road Rio Grande, NJ 08242

**609.889.0911**[www.capeharbormarine.com](http://www.capeharbormarine.com)Your Key West  
Superstore!**KEY WEST**

**2021 1720 CC**  
Yamaha power



**2021 203 DFS**  
Yamaha power



**2021 203 FS**  
Yamaha 150hp



**2021 189 FS**  
Yamaha power



**2021 219 FS**  
Yamaha 200hp

**IN STOCK!**

**2021 239 DFS**  
Yamaha power



**2021 263 FS**  
T/Yamaha 200hp

Ocean  
Blue Also  
Available

**2021 239 FS**  
Yamaha 250hp

**MERCURY**  
Portable Engine Clearance Sale!

**LOAD-RITE****YAMAHA**





# GOOD LUCK POINT MARINA

Est. 1965

61 Dorrance Drive • Bayville, NJ 08721

**732-269-3700**

## RESERVE WINTER STORAGE NOW!

Servicing  
the Barnegat  
Bay for Over  
50 Years!

Reserve Your  
2021 Summer  
Slip Now!

Recently  
Dredged!

**OPEN ALL YEAR! ICE • BAIT • GAS • DIESEL!**

### NOW AVAILABLE:

Bottom Painting • Boat Detailing • Summer Slips • Boat Pick-up & Launch  
Spring Boat Commissioning • Spring • Start-up/Tune-up (includes water test)  
Two 25 Ton Lifts • Restaurants Nearby • WiFi • Spacious & Clean Restrooms w/Heat & AC  
Private Showers & Dressing Rooms • Laundry • Bait • Fuel • Ice • All Slips Have Water,  
Electric & Catwalks • Fully Stocked Marine Store • Full Service • Marina w/Two Factory Trained Techs

### PRE-OWNED SPECIALS



Super Clean!  
1994 33' Carver 330 Mariner  
T/350hp Crusaders, marina maintained since  
new, extra clean • \$35,000



36' Pacemaker Sportfisherman,  
T/Crusader V8  
\$7,500 MAKE OFFER



Clark Tow Tractor,  
electric hydraulic trailer hitch  
\$2,000

Parts Department open on Sundays  
Large Inventory of Mercury Parts & Accessories  
We also Repair & service all Major Brand Engines with OEM Parts  
**ALL WORK GUARANTEED!**

Fuel Injector Service  
**SERVICING  
GAS FUEL INJECTORS!!!**



**MERCURY MERCURY**  
"1 On The Water"  
PREMIER SERVICE  
MERCURY & MERCRUISER MASTER TECHNICIANS



AUTHORIZED  
**mercury**  
STERN DRIVES & INBOARDS  
SALES & SERVICE

**Interlux**  
yachtpaint.com



# EXPLORE THE 2021 BOATS & WAVERUNNERS

## VISIT US FOR THE END OF SEASON SALES EVENT

**2021  
252S**  
More to Love



**2021  
FX LIMITED  
SVHO**  
All That You Can  
Imagine and More!



**2021  
255XD**  
A Real Social Influencer



# YAMAHA

**2021  
VX LIMITED HO**  
Most Power,  
Most Accessories



## PREMIER DELIVERY PROGRAM NOW AVAILABLE!

**2021  
255 FSH  
SPORT E**  
Designed for  
Big Adventures

Customers interested in purchasing the first quantities of 2021 Waverunners & Boats can pre-order their vehicle now to insure allocation, get exactly what you want and have a smooth delivery process.  
**CALL TODAY!**

**2021  
GP1800R  
SVHO**  
Supercharged Race  
Technology



**2021  
275SD**  
A Revolutionary  
Boating Experience



as low as  
**2.99% apr**  
FOR 60 MONTHS  
ALL NEW BOATS



**732-929-8168**

as low as  
**3.99% apr**  
FOR 36 MONTHS  
ALL NEW WAVERUNNERS

3323 ROUTE 37 EAST • TOMS RIVER, NJ • EMAIL: SALES@TRKAWYAM.COM

**WWW.TOMSRIVERMARINEANDMOTORSPORTS.COM**



\*Available for well qualified tier A1 credit customers who finance through Yamaha Financial Services. 2.99% APR financing for 60 months at \$17.96 per month per \$1,000 financed regardless of down payment. Not available on 275 Series Boats. Must take delivery from retail stock by 12/31/20 on purchase of new 2015-2021 Yamaha Sport Boat. Available on approved credit through Yamaha Financial Services. Not all buyers will qualify. Higher financing rates apply for buyers with lower credit ratings. See dealer for qualifications and complete details. Offer good only at participating dealers. ©2020 Yamaha Motor Corporation, U.S.A. All rights reserved. Follow instructional materials and obey all laws. Drive responsibly, wearing protective apparel. Always drive within your capabilities, allowing time and distance for maneuvers, and respect others around you. Don't drink and drive. FOR MORE INFORMATION, VISIT OUR WEBSITE AT YAMAHABOATS.COM OR CALL 1.800.88.YAMAHA

\*Available for well qualified tier A1 credit customers who finance through Yamaha Financial Services. 3.99% APR financing for 36 months at \$29.52 per month per \$1,000 financed regardless of down payment. Must take delivery from retail stock by 12/31/20 on purchase of new 2015-2021 Yamaha Waverunners. Available on approved credit through Yamaha Financial Services. Not all buyers will qualify. Higher financing rates apply for buyers with lower credit ratings. See dealer for qualifications and complete details. Offer good only at participating dealers. ©2020 Yamaha Motor Corporation, U.S.A. All rights reserved. Follow instructional materials and obey all laws. Drive responsibly, wearing protective apparel. Always drive within your capabilities, allowing time and distance for maneuvers, and respect others around you. Don't drink and drive. FOR MORE INFORMATION, VISIT OUR WEBSITE AT YAMAHABOATS.COM OR CALL 1.800.88.YAMAHA







# 609-693-9423

146-148 Marine Plaza  
Forked River, NJ

## FULL SERVICE MARINA

tidesendmarina1@gmail.com

**Gas Dock**  
Now Open  
7 Days A  
Week

### Reserve Winter Storage!

Reserve  
Your 2021  
Slip Now!



Slips



Service



Sales

**Restrooms/Shower • Travel Lift • Owner Lives on Premises**

# INMAR

INFLATABLE BOATS

POWERED BY  
**SUZUKI**  
MARINE

Professional Series 12'-23'



Recreational Series 8'-14'



Ryan Myers

ryan@inmarboats.com | (800) 729-1665 - Ext 25

**WWW.INMARBOATS.COM**



# ADD SOME HORSEPOWER TO YOUR HOLIDAY



**0** DOWN PAYMENT

RATES AS LOW AS **3.99%\*** APR

## REPOWER NOW FOR STRIPER FALL OR SPRING SEASON

**F2.5SMHB**  
F6 SMHA  
**F6 LMHA**  
**F9.9 SMHB**  
**F9.9 LMHB**  
**T9.9 LPHB**  
**T9.9 XPHB**

**F15 SMHA**  
**F15 LMHA**  
**F20 LEHA**  
**F25 LMHC**  
**F25 SWHC**  
**F25 LWTC**  
**F40 LA**

**F70 LA**  
**F90 LB**  
**F115 LB**  
**F115 XB**  
**F150 LB**  
**F150 XB**  
**LF 150 XB**

**F200 XCA**  
**LF200 XCA**  
**F200 XB**  
**LF200 XB**  
**F225 NCA**  
**F250 NCA**  
**LF250 NCA**

**F250 XB**  
**LF250 XB**  
**F300 NCA**  
**LF300 NCA**  
**F300 LA**

**63 Engines  
In Stock!**

Premium Racks & Slips up to 40' • Yamaha Key Dealer for 31 Years  
"Everything in Boating Since 1950" • Family Owned & Operated  
5 Year Round Master Certified Marine Technicians • Marine Store

## NOW BOOKING FOR WINTER WORK!

**electronics • gelcoating • canvas • expert repowers & repairs**

# 732-787-2212

[sales@gatewaymarineinc.com](mailto:sales@gatewaymarineinc.com)

[www.gatewaymarineinc.com](http://www.gatewaymarineinc.com)

**Come By & Visit us at 34 Bay Ave • Highlands, NJ 07732**







# DILLON'S CREEK MARINA

www.dillonscreekmarina.net • 732-270-8541  
243 Lake Ave • PO Box 1274 Island Heights, NJ 08732

## *A Full Service Marina*



Power & Sail • Ship's Store • Clean Restrooms & Showers  
Laundry • Clubhouse • Heated Saltwater Pool • Picnic Areas  
Free WiFi • Marine Repairs • Fiberglass Work • Repowering  
Two 25-Ton Open-End Lifts • 3 Hydraulic Boat Trailers  
FORMULA Service Center  
Certified Mercruiser & Yanmar • Upland Winter Storage



MerCruiser

Interlux yachtpaint.com

YANMAR marine



Sea Hawk PREMIUM YACHT FINISHES Hand Crafted in America!



**848-232-4292***sales@allpointsmarineservices.com***320 Hawthorne Ave (Rt 35 North)****Point Pleasant Beach, NJ 08742***Your trusted boating experts**www.allpointsmarineservices.com***BOATS IN STOCK  
AND READY TO GO!****CENTURY****B · O · A · T · S****DEMAND IT ALL**2600 CC  
T/Yamaha 200hp  
**\$132,000**24 Resorter  
**\$105,000**2200 CC  
**\$69,500****YAMAHA****DEMAND IT ALL with Century**  
**Fishability • Luxury • Reliability**

## Do You Take Pride In Your Boat?

The marine insurance professionals at Bay Marine take pride in providing you and your boat with the proper coverage. We will customize each policy to meet your specific boating needs.

Take advantage of Bay Marine's extensive boating and insurance experience and let us chart your boat insurance course. The specialists at Bay Marine are ready to assist you.

**Ask about our Exclusive Insurance Programs for:**

- Sportfish Boats • Six Pack Charter Boats
- Cruisers • Center Consoles

**BAY MARINE**  
Yacht InsuranceDivision of  
Bay Agency Insurance Group Inc.**Representing TRAVELERS** **Call today for a quote!****888-718-3900****93 East River Road • P.O. Box 543 • Rumson, New Jersey 07760****Phone: 732-741-4637 • Fax 732-219-8897****www.bayagency.net****MARINE INSURANCE**



# 2021 MODELS ARRIVING DAILY!

**PRE-ORDER YOUR PONTOON BOAT NOW TO INSURE ALLOCATION,  
GET EXACTLY WHAT YOU WANT AND HAVE A  
SMOOTH DELIVERY PROCESS. CALL TODAY!**

*Bentley*  
PONTOON BOATS



**732-929-8168**



**3323 ROUTE 37 EAST • TOMS RIVER, NJ • EMAIL: SALES@TRKAWYAM.COM**



**WWW.TOMSRIVERMARINEANDMOTORSPORTS.COM**

**NEW LEADER 12.5**



**Just Arrived-Special Off Season Pricing**

**Baywood Marina**

FAMILY OWNED & OPERATED SINCE 1965



63 Pilot Drive • Brick, NJ 08723

Call 732-477-3322 or

Email: [don@baywoodmarina.com](mailto:don@baywoodmarina.com)

Check All of Our Products at: [www.baywoodmarina.com](http://www.baywoodmarina.com)

200 Slip Marina

Full Service • Fuel • Swimming Pool

New & Pre-Owned Boats for Sale

Located on Barnegat Bay





# BAKER'S MARINA GROUP

**CALL TODAY TO SCHEDULE STORAGE**

**RESERVATIONS & SERVICE! 732-872-9300**



## Marina on the Bay



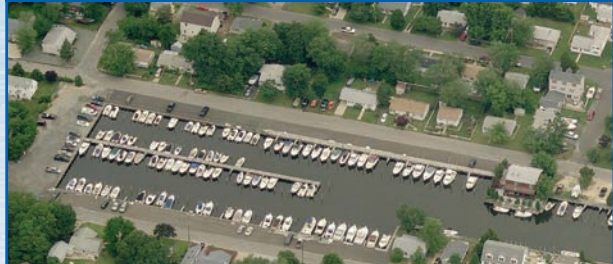
**RESERVE NOW 2021 SLIP!**  
*Highlands, NJ*

### \* New Tiki Bar w/Extended Deck \*

- New Floating Docks
- 35 Ton Marine Travel Lift
- 30 Amp Electric
- Dockside Water
- Bathrooms/Shower
- Picnic Area w/Grills
- Wifi/Ice/Bait

**NY/NJ  
Prime Fishing  
Access**

## Bakers Basin



**RESERVE NOW 2021 SLIP!**  
*Waretown, NJ*

### \* EASY ACCESS TO BARNEGAT INLET \*

- 30 Amp Electric
- Dockside Water
- Bathrooms
- Picnic Grounds
- Trash Disposal

**Now  
Taking Winter  
Storage  
Reservations!**

**[www.bakersmarinagroup.com](http://www.bakersmarinagroup.com)**

# Distinctive Interiors

**In Business  
Since 1992**

**THE TRIM SHOP**

**COVID-19 CONTACTLESS UPHOLSTERY**



**Complete Boat  
Upholstery**

**Off Season  
Specials Available**

**FREE ESTIMATES!**

- Will Remove & Replace all of your Boat's Upholstery
- Final Cleaning w/Spray Nine Antibacterial Cleaner
- Pay Over the Phone Options
- Over 25 Years in Business
- Store is Open & Ready to Serve Your Boating Needs

**732-270-1260**

[www.distinctiveautointerior.com](http://www.distinctiveautointerior.com)

1819 Rt. 37E • Toms River, NJ 08753

Email: [thetrimshop@comcast.net](mailto:thetrimshop@comcast.net)



**CALL  
FOR FREE  
ESTIMATE!**

**FX® SERIES**

**THE TOP-OF-THE-LINE  
WAVERUNNER WHERE  
EXHILARATION  
COMES STANDARD**



**Action**  
**YAMAHA OF NEW JERSEY**  
*Since 1971*

**732-494-5555**

**108 Essex Ave (Rt 27) • Metuchen, NJ 08840**

***info@actionyamahanj.com***

***www.actionyamahanj.com***



FX® HO



FX CRUISER® HO



FX SVHO®



FX CRUISER SVHO®



FX® LIMITED SVHO®

**YAMAHAWAVERUNNERS.COM | #RunTheWater**

©2020 Yamaha Motor Corporation, USA. All rights reserved. Follow instructional materials and obey all laws. Ride responsibly, wearing protective apparel and USCG-approved personal flotation device. Always drive within your capabilities, allowing time and distance for maneuvering, and respect others around you. Never drink and ride. Shown with optional accessories.







# WATERFRONT MARINE

#1 GOLL AVE, SOMERS POINT, NJ ~ 609-926-1700

281 PRINCETON AVE, BRICK, NJ ~ "Featuring Chaparral & Carver" 732-202-6961

2822 SOLOMON'S ISLAND RD, EDGEWATER, MD ~ 443-949-9041

Premium Brands ~ Exceptional Service

[WWW.WATERFRONTMARINE.COM](http://WWW.WATERFRONTMARINE.COM)



Robalo R302



Robalo R242



Chaparral 297SSX



Carver Yacht 34 Coupe



028



250 Suncoast

## - PREOWNED BOATS -



Located in Somers Point

2018 Bennington 22SSRCXP Pontoon,  
Yamaha F150 Vmax • \$44,900



Located in Somers Point

2016 Nauticstar 19 Deckboat,  
Yamaha F115 4-stroke • \$27,900



Located in Somers Point

24' '13 Robalo R247DC,  
Yamaha F300, electronics, \$59,900

### BOWRIDERS & PONTOONS

28' '12 Chaparral 284 Sunesta, Volvo Penta 8.1L 400hp	Pending
28' '12 Chaparral 287 SSX, 8.2L	Pending
28' '15 Chaparral 287 SSX, Volvo Penta 430hp DP, loaded	Pending
27' '10 Chaparral 276 SSX Bowrider, Volvo Penta 8.1L 375 duo prop	\$49,900
26' '19 Chaparral 264 Sunesta, Volvo Penta 350 DP	\$94,900
26' '16 Four Winns H260	\$64,900
25' '06 Cobalt 250	Pending
24' '08 Cobalt 242 BR, Volvo Penta 5.0 GI 300hp, no bottom paint	\$29,900
24' '11 Chaparral 246 SSI, Volvo Penta 5.7L 300hp DP	Pending
24' '18 Chaparral 2430 VRX	\$68,900
24' '15 Chaparral 243 Vortex	\$49,900
23' '17 Stingray 234 LR, Yamaha F250 Vmax, 97 hours	\$49,900
23' '07 Monterey 234	Pending
22' '04 Chaparral 220 SSI, Volvo Penta 5.0L GXi, '09 Tidewater galv trl	\$22,900
22' '18 Bennington 22 SSRCXP Pontoon, Yamaha F150 Vmax	\$44,900
22' '11 Chaparral 224 Sunesta	Pending
22' '14 Bennington 2275 GCW, Yamaha F150, 2018 Load Rite trl	Pending
22' '06 Sea Ray 220	Pending
20' '11 Stingray 208 LR	Pending
20' '07 Cobalt Bowrider	Pending
19' '16 Nauticstar Deckboat, Yamaha F115 4-stroke	\$27,900

### CRUISERS & CUDDY CABINS

38' '06 Cruisers Yachts 385 Motor Yacht	Pending
36' '11 Rinker 360 Cruiser	Pending
33' '12 Chaparral 330 Signaure	Pending
29' '00 Sea Ray 290 Sundancer, T/Mercruiser 5.7 EFI 260hp BIII	\$32,900
23' '88 Chaparral 235XLC, 5.7L Merc	\$7,900

### FISHING BOATS

30' '00 Pursuit 3070 Offshore, T/2017 Evinrude 300hp G2 Etecs	\$74,900
27' '19 Robalo R272, T/Yamaha F200, lift kept, trailer	\$126,500
25' '05 Parker 2520 Deep Vee SC, 2006 Yamaha F250, '05 EZ Loader	\$46,900
24' '18 Robalo 246 Cayman Center Console, Yamaha F300	\$76,900
24' '13 Robalo R247 DC	\$59,900
22' '18 Robalo R222 Explorer, Yamaha G200, indoor rack boat	\$58,900
22' '19 Robalo 226 Cayman Center Console, Yamaha F200, trailer	\$63,997
22' '18 Robalo R222 Center Console, F200 Yamaha, trailer	SOLD
20' '18 Robalo R200 Center Console, Yamaha F150, trailer	SOLD
20' '18 Robalo R202 Center Console, Yamaha F150, trailer	SOLD
20' '96 Trophy 2002 WA	\$8,900
19' '17 Yamaha 190 Center Console, High Output Jet, 70 hours	\$31,900
19' '15 May-Craft 1900 CC, Evinrude 115hp E-Tec, trailer	\$24,900



AUTHORIZED  
PARTS &  
SERVICE



YAMAHA  
When you want the best



Full Service  
Marina w/Slips &  
Racks Available!





# SCHOONER ISLAND

## MARINA

South Jersey's  
Exclusive Dealer for:

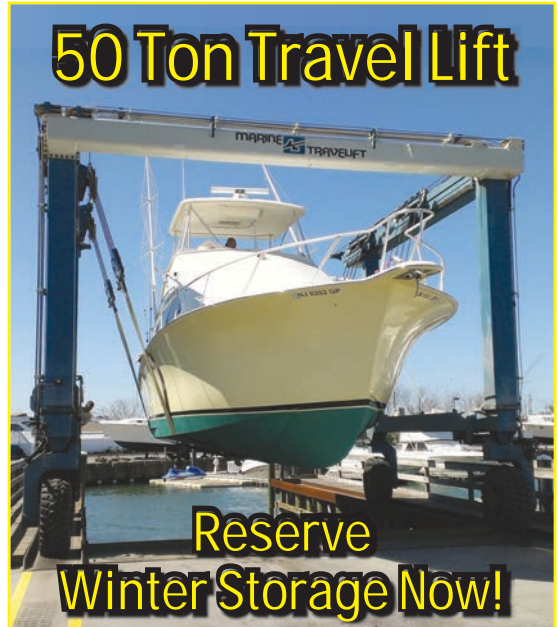
*SunChaser*

**STARCRAFT**  
MARINE

**10 Ton  
Forklift**



**50 Ton Travel Lift**



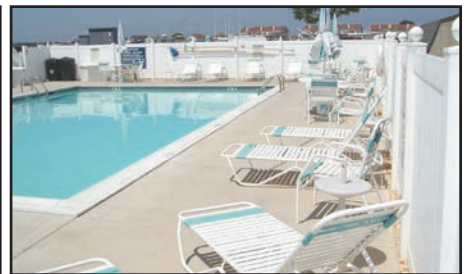
**Certified  
Honda,  
Yamaha  
and Suzuki  
Techs On Site**



**Reserve  
Winter Storage Now!**

Fuel Dock w/bait & pump-out • Pump out behind every slip  
Electric for every slip • Free Wi-Fi • Free Comcast Cable TV  
Free Water • Heated Pool • Laundry Mat on site  
Full Ship Store • Heated & AC Bathroom • Dock Attendance

Slips Available  
For 2021 Season  
Slips from 17' - 110'



**Certified Dealer**

**HONDA**  
**MARINE**  
**SUZUKI**  
MARINE

**YAMAHA**

Parts • Sales • Service

Service Department Open Mon-Sat • 8am-4:30pm

**3.5%  
Sales Tax**

**5100 Lake Road  
Wildwood, NJ 08260  
609.729.5100**

**www.schoonerislandmarina.com**

**Interlux**  
yachtpaint.com



# McKee

**YACHT SALES**  
at Schooner Island Marina

## Call Now For Your Best Deal!

[www.mckeeyachtsales.com](http://www.mckeeyachtsales.com)



*SunChaser*

22' Geneva  
150hp Yamaha  
Call for  
Special Price!

*SunChaser*



22' Classic  
Cruise

IN STOCK  
& READY  
TO GO!



**STARCRAFT**  
MARINE

210 MDX

IN STOCK  
& READY  
TO GO!

**STARCRAFT**  
MARINE



230 MDX



## THINKING OF SELLING?

We Are Now Taking  
Brokerage Listings!  
List Your Boat Here!  
We Will Sell It!

Complete Marine Maintenance Facility  
**Certified Honda**  
**Yamaha • Suzuki Techs**  
On Site

Reserve  
Winter Storage  
Now!

5100 Lake Road • Wildwood, NJ 08260

609.729.5100

[www.schoonerislandmarina.com](http://www.schoonerislandmarina.com)





732-691-1216 [www.DRBMarineLLC.com](http://www.DRBMarineLLC.com)



**MARINE MAT**  
Marine Decking Solutions



## Wehrlen Brothers Marina

**197 Princeton Ave • Brick, NJ 08724**  
**[www.wbmarina.com](http://www.wbmarina.com) • 732-899-3505**

- Winter Storage to 50' or 40 tons (includes haul, wash, block & launch)
- Rates Between \$28/ft to \$33/ft
- Prop, Shaft, Strut and Rudder Work
- Cutlass Bearing Replacement
- Fiberglass Repair Work
- Bottom Painting & Detailing
- Shrink Wrapping

JUST OFF BARNEGAT BAY ON THE  
NORTH SIDE OF THE METEDECONK RIVER



**WINTER  
STORAGE  
\$28/FT**

Includes bottom wash & re-launch in Spring

**SLIPS STARTING AT \$49/FT**

**- Slip Customers Receive A Discount on Fuel! -**

**All New!  
Cable & Wi-Fi!**

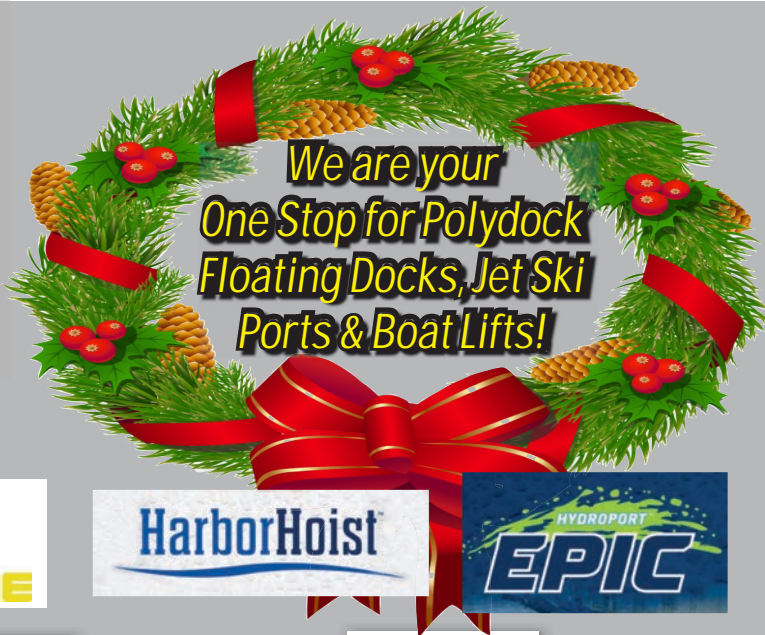
**- WE ARE A FULL SERVICE MARINA -**

**Lagoon Recently  
Dredged!**

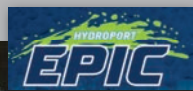
• Restroom/Showers • Water/Electric Included  
25 Ton Travelift • Storm Protected • Gas Dock

**Call Now! 609-693-6112 • Fax 609-971-6399**





**Special \$1,275**



- Fresh or Saltwater
- Push Button Controls
- Easy Loading/Unloading of Passengers
- Works for Any Boat or Dock



**Call: 201-664-3755 • Email: [sales@mmdocks.com](mailto:sales@mmdocks.com)**  
**[www.mmdocks.com](http://www.mmdocks.com)**

# AFTER 53 YEARS WE ARE HAVING A RETIREMENT SALE



**(2) 4000LB DOLLYS**



**(4) 10,000LB DOLLYS  
W/OVERSIZED WHEELS**



**(3) OUTBOARD RACKS ON WHEELS  
EACH HOLDS (10) V-6 OUTBOARDS**



**CARPETED PLATFORMS  
(16) 3' X 4'                      (3) STEP UNITS**



**ALUMINUM STEPS (3-4-5 STEPS)**



**PLASTIC STEPS W/RAILING  
(6) 3 STEPS                      (2) 4 STEPS**

## - OTHER ITEMS -

**TEST TANK • MOTOR TOWER • MANY MERCURY & MERCUISER MANUALS  
YAMAHA MANUALS • MISC PROPS (NEW & USED) • MISC ACCESSORIES  
USED GALV ROLLER TRAILERS • MANY OTHER MISCELLANEOUS ITEMS**

*Call or Email for Information*

**ANCHOR MARINE**  
1328 Jct Hwys 33 & 34 • Farmingdale, NJ  
(732) 938-5411  
anchormarine@verizon.net





# HUGE HOLIDAY SALES EVENT!



1 Available!  
\$199,800

## SEA FOX



## JEANNEAU



NEW  
2020  
Sea Fox  
328  
Commander  
No Trades



NEW/2021 Jeannneau NC895 Sport  
T/F250 Yamaha

## WAR EAGLE BOATS



2021 War Eagle 2170 Black Hawk  
F-150 Yamaha, alum trailer  
JUST ARRIVED!



2021 War Eagle 860 Sportsman  
F115 Yamaha, alum trailer  
JUST ARRIVED!

## MONTEREY BOATS



BOAT, MOTOR  
& TRAILER  
BLOWOUT!  
\$49,995

NEW 2019 M225 • Yamaha F150



2020 Misty Harbor A-2285 CF  
F-115 Yamaha



2020 Misty Harbor A-2085 CF  
F-90 Yamaha



2020 Misty Harbor A-2085 CF  
F-115 Yamaha

# Rudy Marine.com

*Where Family Boating Begins*

Delaware has

**NO SALES TAX!**  
**3 GREAT LOCATIONS!**

## YAMAHA



**REPOWER  
HEADQUARTERS**

**302-945-2254 • 32606 DuPont Blvd Dagsboro, DE 19969**

**302-999-8735 • 411 S. Maryland Ave. (Rt 4) Wilmington, DE 19804**

**443-995-3785 • 3033 Kent Narrows Way South, Suite 3 Grasonville, MD 21638**





## OWN THE BOAT OF YOUR DREAMS



Become the next **"Just Financed"**.  
Apply online at **JJBEST.COM** or call **800-USA-1965**.

Offering low rates, long terms, and no prepayment penalties.  
Simple application and quick funding.

Looking to refinance? We can help with that too.



# ALMARS

**We Are A Full Service, Premier Mercury Outboard Repair Center! Let Our Certified Mercury Technicians Service Your Mercury Motor Needs!**

## LEFTOVER VERADO SALE!

**YES!!!!  
WE ARE OPEN  
FOR BUSINESS  
8AM-5PM  
MONDAY-FRIDAY!**



225hp  
black • \$14,995



250hp  
black • \$15,995



300hp  
black • SOLD



300hp  
white • \$18,995



350hp  
Call for Great Deal!



350hp  
Call for Great Deal!

We Now Offer  
**INJECTOR SERVICE**  
with  
ONE Day  
Turnaround!



150  
4-stroke  
Black



150 ProXS  
4-stroke  
Black



175XL ProXS  
4-stroke  
Black



200  
Sea Pro  
Black



225XL  
4-stroke  
Black



250 XL  
4-stroke  
White

**100's of Used  
Cowlings In Stock!  
Call for Availability!**

**5HP  
BLOWOUT SALE!  
Call for Pricing!**

**250XL PRO  
VERADO 15,995  
Only 1 Available**

### REMANUFACTURED OUTBOARD ENGINE SALE!

90hp - 250hp 2 Year Warranty

Starting As Low As \$5,495 Call for Details!

**CALL US  
FOR GREAT  
DEALS ON  
NON-CURRENT  
POWERHEADS!**

**Call us for current pricing new current  
and noncurrent outboards  
NO SALES TAX IN DELAWARE!**

701 Washington St., New Castle, DE

**302-328-8541**  
[www.almarsoutboards.net](http://www.almarsoutboards.net)

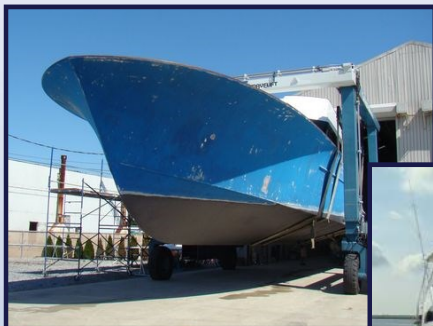
HOURS: Monday - Friday: 8am - 5pm  
CALL FOR GREAT PRICING ON NEW  
& USED MERCURY OUTBOARDS

**NO HIDDEN COSTS**  
NOT RESPONSIBLE FOR TYPOGRAPHICAL ERRORS



All prices good  
while supplies last!

Pricing includes all rebates.



**Indoor painting**



**Custom Mezzanines & Teak Work**



**You won't find a better service complex in the Northeast**



**Repowers & Marine Diesel Engine & Generator Service**



**Factory trained certified Dealer**

**Delivering quality service for over 22 years!!**

**Simple repairs to complete re-fits**

**Jersey Cape Custom Yachts** On the Mullica River Lower Bank, NJ

Ph. 609-965-8650 E-mail: [service@jerseycaperyachts.com](mailto:service@jerseycaperyachts.com) [www.jerseycaperyachts.com](http://www.jerseycaperyachts.com)



# Jersey Cape Devil 36' Stand & Deliver !

**\$649,900**



**Celebrating 22 years  
Delivering Quality  
& service to our  
Owners**



More than just sexy lines - The most stable fishing platform in her size range. Great in a head sea with an incredible ride. Contact us today for full details on this great offer, available for a limited time.



Cummins 550 hp , Onan generator, Tournament Tower package with enclosure & command style seating, tackle storage, outriggers & Release Marine Helm chair, Garmin Electronics Pkg. Colored Hull, In-deck refrigeration/freezer, cockpit electric reel outlet

14'7" Beam -True Carolina Style Fiberglass hull

*Jersey Attitude. Carolina Flare*

**Contact:**  
**Scott Krawiec Team Leader/Owner**  
scottk@jerseycapeyachtsales.com  
609-970-2677

**VISIT OUR WEB SITE & FOLLOW US**  
**[www.jerseycapeyachtsales.com](http://www.jerseycapeyachtsales.com)**



# HANCE and SMYTHE INC.

Dependable Waterfront Sales & Service **Since 1959**

## BOSTON WHALE<sup>®</sup>

THE UNSINKABLE LEGEND



325 Conquest



280 Vantage



250 Outrage



210 Montauk



23 Sport Cabin

# MERCURY



# YAMAHA

# KW KEY WEST



239 DFS

Selling and Servicing Popular High Quality Boats & Motors in the  
Barnegat Bay - Manahawkin Bay - Little Egg Harbor Bay & Great Bay Area  
**Since 1959**

[www.hanceandsmythe.com](http://www.hanceandsmythe.com)

1225 East Bay Ave • (609) 597-7813 • Manahawkin, NJ

(Closed Monday Tuesday)



# HANCE and SMYTHE INC.

Dependable Waterfront Sales & Service **Since 1959**

## Parker



## YAMAHA



**1801 Center Console**



**2300 SE**

**2120 Sport Cabin**



**61 Years  
of Dependable  
Waterfront  
Sales and  
Service!**



**2520 XLD Sport Cabin**



**2320 Sport Cabin**



**2501 Center Console**



Selling and Servicing Popular High Quality Boats & Motors in the  
Barnegat Bay - Manahawkin Bay - Little Egg Harbor Bay & Great Bay Area  
Since 1959

**[www.hanceandsmythe.com](http://www.hanceandsmythe.com)**

**1225 East Bay Ave • (609) 597-7813 • Manahawkin, NJ**



# SHERMAN'S BOAT BASIN

732-295-0103 • [www.ShermansBoatBasin.com](http://www.ShermansBoatBasin.com)

664 Princeton Ave • Brick, NJ 08724

**Full Service Marina located on the Beaver Dam Creek!**

## WINTER PROJECT! REPOWER NOW!

Call or Stop By for A Great Deal!



Family Owned  
& Operated for  
Over 90 Years

**VISIT  
OUR SHIP  
STORE!**

Parts for Suzuki  
Volvo Evinrude  
**Johnson • Mercury**  
and many more!



Winterization  
Services Available!  
Don't Be Left Out In The Cold!

**"Experience with the Honesty, Integrity and Trust you Deserve!"**



Service • Storage • Store

**TRIXIE'S LANDING**

2021 SLIPS  
AVAILABLE!

732-262-3030

303 Brennan Concourse  
Bayville, NJ 08721

[www.CDNmarine.com](http://www.CDNmarine.com)

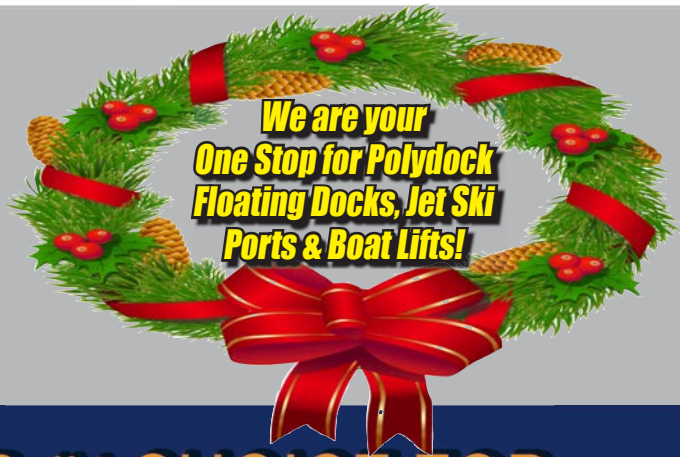
**RESERVE  
WINTER STORAGE  
NOW!**

**SHOP LOCAL!!**  
Electronics & Boat Accessories!

Visit: **Shop.CDNmarine.com**  
Order Online • Installation Available!







# WE ARE YOUR #1 CHOICE FOR FLOATING DOCKS AND JET SKI PORTS



**\$995\***

**Glide-N-Ride**

**64" WIDE X 132" LONG**



**\$1195\***

**Roll-N-Ride LS**

**59" WIDE X 140" LONG**



**\$1195\***

**Roll-N-Ride**

**64" WIDE X 132" LONG**



**\$1395\***

**Roll-N-Ride XL**

**90" WIDE X 140" LONG**

**CALL: 201-664-3755**

**EMAIL: [sales@mmdocks.com](mailto:sales@mmdocks.com)**

**[www.mmdocks.com](http://www.mmdocks.com)**

**\* Plus Freight**

IF YOU DON'T  
HAVE INSURANCE,  
YOU'RE MISSING  
THE BOAT.



**31% of boats aren't insured.**

I can help you make sure you don't get stuck with 100% of the cost if something happens. For less than \$1 a day\*, Allstate Boatowners Insurance can cover things like injury, theft, and damage to your boat, or someone else's. Don't wait. Call me today.

**Burke Family Agency**

**732-257-1122**

385-B Rt. 18

East Brunswick, NJ 08816

shawnburke@allstate.com



**Allstate**  
BOAT INSURANCE

\*Based on 2009 countrywide average gross premium for boatowners insurance. Your actual premium will vary based on state and value of boat. Subject to availability and qualifications. Allstate New Jersey Property and Casualty Insurance Co. Northbrook, IL. © 2009 Allstate Insurance Co.



**CALL EARLY  
TO RESERVE  
A TIME FOR  
YOUR BOAT!!!**

**FROM  
\$9.00 Per Foot  
At Your Location!**

**Protect Your Boat This Winter!!!  
with SHRINK-WRAP**

**~Marinas  
Sub-Contracting  
Available~**

**SHIP TO SHORE  
MARINE DETAILING**  
jri, llc



**\* Fully Insured \***  
**\* Credit Cards Accepted \***  
**CALL NOW!**  
**609-641-6330**



**SEAPORT MARINA**

176 Thompson Lane • Egg Harbor Twp, NJ 08234

**609-927-0266 • 732-939-2841**

**www.seaportmarina.net**

**SOUTH JERSEY'S BEST KEPT SECRET**

**BEST PRICES IN THE AREA!**

**WINTER  
STORAGE  
ONLY \$10/FT  
ON TRAILER!**

**Full Service Marina  
Marine Store • Bait & Tackle**

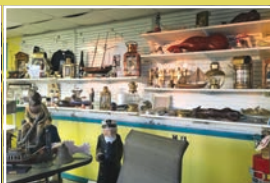
**Canvas Work Available On Premises!**

**RESERVE  
YOUR WINTER STORAGE  
NOW!**

**Here for All Your  
Winterization Needs!**

**2021 Slips Starting at  
\$1,000 for Season!**

**ALL NEW  
GAS DOCK  
NOW OPEN!**



**PERFECT FOR  
PONTOONS!**



**ALMAR MARINE LLC**

908-309-4016

located at Baltic Marina

101 Baltic Ave • Waretown, NJ 08758

almarmarine1@gmail.com

Authorized  
Dealer:  
2.5hp - 250hp**TOHATSU**  
Feel the Wind™

Veteran

**NEW TOHATSU  
MOTORS INCLUDE FULL  
5 YEAR WARRANTY!****MERCURY SPORT JET SPECIALIST!  
Marine Mechanic 30 Years Experience****HOBBY LOBBY MARINE**

at Shelter Cove Marina

FAMILY OWNED AND OPERATED SINCE 1961

**1423 Bay Avenue • Toms River, NJ 08753****732-929-1711 • [www.hobbylobbymarine.com](http://www.hobbylobbymarine.com)****NOW TAKING RESERVATIONS FOR  
WINTER STORAGE AND 2021 SLIPS!****- FULL SERVICE MARINA -**

- Brokerage Boats
- Specializing in Grady White boats
- 86 Deep Water Slips including Water, Electric & Plenty of Parking
- Clean Restrooms w/Showers

**Thinking About  
Repowering with A New  
Yamaha Outboard?**Give us a call or email  
**[bob@hobbylobbymarine.com](mailto:bob@hobbylobbymarine.com)**  
for a quote!Factory  
Authorized  
Warranty  
Center for  
Grady White  
**Boats****Full Service Marina • Yamaha Outboard Parts &  
Service • Slips up to 35' • Jet Ski Docks**

Thanks to all of our Customers  
for a Great 2020 Season!  
Stay Safe and Healthy  
This Holiday Season!  
*Can't Wait for 2021!*

**SEA•DOO®****EAST DOVER MARINA, INC.**

Toms River, NJ

MARINE TECHNICIAN TRAINING

# RIDE THE CREST

to career success



## ENROLL FOR TRAINING TO BECOME A PROFESSIONAL MARINE SERVICE TECHNICIAN

Our in-depth program includes training in: Seamanship, AC & DC Electrical, ABYC Standards, Air Conditioning & Refrigeration, Mechanical Systems, Stern Drives/Transmissions, Computerized-Fuel Injected Inboard and Outboard Engines, Inboard, Outboard and I/O Systems, Electronic Diesel Engines (Cummins QSB 5.9 380 HP Common Rail Trainer), Fiberglass & Gelcoat Repair, Plumbing and Sanitation Systems.

*Financial Aid for those who Qualify • Career Placement Assistance*



**CALL NOW**

# 866-656-7794

**www.autotraining.edu**

900 Johnsville Blvd., Warminster, PA 18974

Supported by


&


with Training Materials & Equipment

For required program disclosure information, please go to [www.autotraining.edu/consumerinformation](http://www.autotraining.edu/consumerinformation).



## Lanoka Harbor

### MARINA

888 Bay Way Lanoka Harbor, NJ 08731

The Best Kept Secret on the Cedar Creek!

**888 Bay Way**  
Lanoka Harbor, NJ 08734  
**609-693-2674**  
[lanokaharbormarina@gmail.com](mailto:lanokaharbormarina@gmail.com)



**BUOY #40**  
Off the Barnegat Bay

**Reserve  
2021 Slip  
Now!**

[www.lanokaharbormarina.com](http://www.lanokaharbormarina.com)



### ON SITE AMENITIES

- Winter Storage (Dry + Wet)
- Summer Slips – 200 + Slips
- Newly remodeled Restrooms
- FUEL DOCK (diesel and Gas)
- Pump OUT STATION
- Boat hauling
- Travel lifts (30-35 tons)
- MARINE REPAIR SERVICE
- MARINE SALES
- VIEWING TOWER

### HOURS

**Mon:** 8:00am-4:30pm

**Tues:** Closed

**Wed:** 8:00am-4:30pm

**Thurs:** 8:00am-4:30pm

**Fri:** 8:00am-5:00pm

**Sat:** 8:00am-5:00pm

**Sun:** 8:00am-4:30pm



**MARINER'S SUN HARBOR, LLC**

451 East Bay Avenue • Barnegat, NJ 08005

**Mariner's Sun Harbor, LLC**  
**M•A•R•I•N•A**

SLIPS AVAILABLE • INTRODUCTORY PRICING

**609-698-6399****JUST OPENED!!!****Totally New Facility****Restrooms  
Showers  
Gas Docks**Wave Runner Ports  
Available**SLIPS AVAILABLE**  
*at Introductory Pricing!***CANYON COVERAGE  
INCLUDED FOR UNLIMITED  
& GOLD MEMBERS****BoatU.S.**  
BOAT OWNERS ASSOCIATION OF THE UNITED STATES

New Jersey

**Tow  BoatU.S.**

Just show your membership card for payment, no out of pocket expenses, good on any boat you own, borrow or charter. Includes towing at sea, ungroundings, fuel drops, jump start, discounts at West Marine.

**24 Hour On Call Dispatch 1-800-391-4869 or  
VHF CH16****Contact Your Local Tower For  
More Information:**TowBoat U.S. Manasquan • Shark River & Mantoloking  
**732-899-6010****ATLANTIC****LIFTS, DOCK & BULKHEAD**1209 Bay Avenue  
Pt. Pleasant, NJ 08742  
732-892-8900  
732-892-3177Email: [boatlift1@comcast.net](mailto:boatlift1@comcast.net)  
Website: [www.AtlanticDock.com](http://www.AtlanticDock.com)  
Fax: 732-892-7166Lift Home Improvement Contract #13VH00683600  
Bulkhead Home Improvement Contract #13VH01052300

# 2021 BOAT SHOWS BEING CANCELED!

## *Dealer Inventory Limited!*

## *Model Year Sold Out!*

### BIGGEST TRI-STATE TIDEWATER/CREST DEALER!

# WE GOT BOATS COMING!



**All New  
2021 Models!**

**All  
New!**



292 CC Adventure

**All  
New!**



272 CC Adventure

**All  
New!**



252 CC Adventure

# CREST

**ORDER YOUR  
PONTON NOW!**



Crest II 220 SL



**(732) 458-3540**

809 Rt. 70 East  
Brick, NJ 08724

[www.coastalboatsalesnj.com](http://www.coastalboatsalesnj.com)

Atlantic City Location:

(609) 287-4496

2800 Absecon Blvd • Atlantic City, NJ



**YAMAHA**

**MERCURY**

**NATION'S #1 TIDEWATER DEALER  
& NJ'S PREMIER CREST DEALER!**

**VENTURE**



Rethink the way you put technology to work for your home or your business.



Wired and Wireless Network Solutions



Multi Room Audio Experience



Custom Designed Home Theaters



Easy To Use Home Integration



CCTV/Surveillance



Business &amp; Commercial

Custom  
Marine Audio  
Installation!

**ITEC**  
CONSULTANTS

See what options are available to you!




**Baltic MARINA**

101 Baltic Ave  
Waretown, NJ 08758

**732-930-4500**

**FULL SERVICE MARINA**  
**RESERVE YOUR**  
**2021 SLIP NOW!**

**Slips • Storage • Repairs**  
**Gas Dock • Boat Ramp**  
**Bait & Tackle • Bathrooms/Showers**

**Reserve 2021 Slip Now!**

**EASY ACCESS TO THE**  
**BARNEGAT INLET!**

## OK, Tell Me Why?

ASK ABOUT  
OUR NEW  
LIGHTWEIGHT  
FABRIC

You're spending \$300 • \$500 • \$800 to shrink wrap your boat each year, when you're just throwing it away in May! Stop wasting money and do the right thing. **Order your Fisher Boat Cover today!**

**Fisher Boat Covers**

FISHER CANVAS  
**FCP**  
PRODUCTS

Fisher Canvas Products, Inc.  
415 Saint Mary Street  
Burlington, NJ 08016

Call today  
and find out  
how much you  
can save  
on covering  
your boat.



**Phone: 609-239-2733**  
**Check Out Our Website: [www.FisherCanvas.com](http://www.FisherCanvas.com)**  
**Email: [info@fishercanvas.com](mailto:info@fishercanvas.com)**

# ALL PRINT ADS INCLUDE FREE INTERNET LISTING\*

## PRIVATE AD RATES

- ☐ INTERNET ONLY UP TO 1 YEAR..... \$39<sup>00</sup>  
☐ 3 ISSUES NO PHOTO CLASSIFIED..... \$49<sup>00</sup>  
☐ 3 ISSUES WITH COLOR PHOTO  
 WITH COLOR PHOTO ON INTERNET..... \$59<sup>00</sup>  
☐ INTERNET FEATURE ADD ON 4 WEEKS  
**AVAILABLE WITH AD PURCHASE ONLY!**  
 ON THE SALTY DOG HOME PAGE ..... \$49<sup>00</sup>  
☐ FRONT COVER..... \$40<sup>00</sup>  
☐ FACEBOOK FEATURE ..... \$15<sup>00</sup>  
☐ PUBLICATION MAILED TO YOU..... \$3<sup>00</sup>

## TOTAL

### FRONT COVERS ARE BASED ON AVAILABILITY

- ☐ CHECK ☐ MONEY ORDER ☐ DISCOVER  
☐ MASTERCARD ☐ VISA ☐ AMERICAN EXPRESS

CC#

Expiration Date \_\_\_\_\_ Security Code \_\_\_\_\_

Advertiser's Name .....

Address .....

Phone .....

Where did you pickup "The Salty Dog"?

Store \_\_\_\_\_ Town \_\_\_\_\_

\*Internet Listing For One Year.

No refunds after Ad is processed. • Advertiser will be responsible for \$20 fee on returned checks.

**YOUR BOAT LISTING CAN ALSO BE SUBMITTED ON THE INTERNET [www.thesaltydog.com](http://www.thesaltydog.com)**

Fill out the description form below, **up to 125 characters (including spaces & punctuation) of advertising.** Please put one character per space beginning with the motor. Include a check, money order or credit card, and mail to us with a good quality COLOR picture of your boat. Photos will only be returned if accompanied by a self-addressed stamped envelope.

## AD COPY

FT. \_\_\_\_\_ YR. \_\_\_\_\_

MANUF. / MODEL \_\_\_\_\_

MOTOR \_\_\_\_\_

ACCESSORIES \_\_\_\_\_

LOCATION OF BOAT \_\_\_\_\_, \_\_\_\_\_, \_\_\_\_\_  
City State Zip Code

PRICE \_\_\_\_\_

PHONE # \_\_\_\_\_

EMAIL \_\_\_\_\_

**Send to: The Salty Dog**  
**254 Brick Blvd • Suite 1**  
**Brick, NJ 08723**

# 732-714-8400

Fax (732) 477-9000 • Email: [info@thesaltydog.com](mailto:info@thesaltydog.com)

## SPECIAL FEATURES

PRIVATE BOAT ADS ..... Pgs. 57-58

SAILBOATS ..... Pg. 59

## SUBSCRIPTION NEW JERSEY

No. of issues \_\_\_\_\_ x \$3.00\* = Total Cost \_\_\_\_\_

☐ CHECK ☐ MONEY ORDER ☐ MASTERCARD ☐ VISA

Credit Card No. \_\_\_\_\_

Exp. Date \_\_\_\_\_

Signature \_\_\_\_\_

SALTY DOG is published Bi-weekly 25 times a year.

Papers are mailed **FIRST CLASS**. Your first issue will be mailed within 1 week. To subscribe, just fill in the amount of issues and multiply by \$3.00\*

Name \_\_\_\_\_

Address \_\_\_\_\_

City \_\_\_\_\_ State \_\_\_\_\_ Zip \_\_\_\_\_

Telephone \_\_\_\_\_

**Mail To: THE SALTY DOG, 254 Brick Blvd • Suite 1, Brick, NJ 08723**


A Bi-weekly Publication for  
 Powerboats, Sailboats, Marine  
 Equipment, Supplies, Services,  
 Waterfront and Photo Ads

For More Info on Display Ads or Internet Listings

Call 732-714-8400 • Fax (732) 477-9000

[info@thesaltydog.com](mailto:info@thesaltydog.com) • Mon- Fri 9:00am to 4:00pm

All advertising, including photographs becomes the property of Salty Dog Publications and not that of the advertiser. No part of The Salty Dog may be reproduced without written consent of the publisher. Although extreme care is taken in checking advertising copy for accuracy, no warranty is given or implied by the publisher. The advertiser, nor, Salty Dog Publications, will not be held responsible for typographical errors, mistakes or misprints. Publishers reserve the right to refuse advertising for any reason whatever.

**Covering New Jersey, Philadelphia, Staten Island and Northern Delaware**



**See Color Photo on the Internet**

**40' 2005 FORMULA 400 SUPER SPORT**, T/Mer-cruiser 469 HO's, AC/HT, gen, electronics, 115 hours, **\$159,995**, 732-840-1100 [sales@brennanboat.com](mailto:sales@brennanboat.com) 151771

**See Color Photo on the Internet**

**28' 2017 CHRIS CRAFT LAUNCH 28**, T/Merc 6.2L 350hp, loaded, lift kept, **\$180,000**, 732-899-8010 [sales@schraderyachts.com](mailto:sales@schraderyachts.com) 151849

**See Color Photo on the Internet**

**25' 2018 GRADY-WHITE 257 FISHERMAN**, CHRISTMAS SPECIAL! T/F150 Yamahas, low hrs, 7/23 warr, factory opt, Garmin GPS radar, Icom 504 radio, ORs, fish inshore/offshore, family cruising, water skiing, like new, ride in Grady, Sea V2 hull, winterized & wrapped for 2021 **\$118,000**  
Call 302-226-3734 or 302-218-9325 144975

**See Color Photo on the Internet**

**34' 2011 PURSUIT 345 OS**, Twin 250hp Yamahas, radar, autopilot, gen, AC/HT, ready to fish, **\$219,995**, 732-840-1100 [sales@brennanboat.com](mailto:sales@brennanboat.com) 149753

**See Color Photo on the Internet**

**28' 2017 PURSUIT S280**, T/Yamaha F300hp, 118 hours, electronics, lift kept, **\$179,900**, 609-368-1141 [stoneharboryachts@gmail.com](mailto:stoneharboryachts@gmail.com) 151852

**See Color Photo on the Internet**

**33' 1999 FOUNTAIN 10M**, T/502 fuel injected rebuilt in '19, TRS drives, Velvet drive trans, IMCO helm, external hyd steering, 80+ MPH, Myco trailer, **\$29,900**, 609-693-9423 [tidesendmarina1@gmail.com](mailto:tidesendmarina1@gmail.com) 151683

**See Color Photo on the Internet**

**28' 1977 BERTRAM Moppie Open**, Completely restored Bertram Moppie Original Tuna Tower AIS Raymarine E80s Repowered V8s 305 Fresh water cooled Mercurys! Completely rewired by Promarine Electronics and new gas tanks 165 & 75 gallon capacity. New Good Windlass & Rope, all 151923

**See Color Photo on the Internet**

**25' 2016 SEA RAY 250 SLX**, Merc 8.2L, Bili, loaded, low hours, excellent condition, **\$82,500**, 732-899-8010 [sales@schraderyachts.com](mailto:sales@schraderyachts.com) 151851

**See Color Photo on the Internet**

**32' 2019 PURSUIT OS325 OFFSHORE**, T/300hp Yamaha 4-strokes, 150 hours, loaded with everything, like new, **\$359,900**, 609-368-1141 [stoneharboryachts@gmail.com](mailto:stoneharboryachts@gmail.com) 152018

**See Color Photo on the Internet**

**25' 2014 SEA RAY 250 SLX**, Merc 350 MPI, Bili, bimini, covers, priced to sell, **\$54,995**, 732-840-1100 [sales@brennanboat.com](mailto:sales@brennanboat.com) 151774

**See Color Photo on the Internet**

**31' 2016 FORMULA 310 BR**, T/8.2L Merc Mag Big Blocks, Bili, 205 hours, joystick, **\$170,000**, 732-899-8010 [sales@schraderyachts.com](mailto:sales@schraderyachts.com) 151850

**See Color Photo on the Internet**

**27' 2014 SAILFISH SAILFISH 275 DC**, T/Mercury 200hp Verados, 117 hours, no bottom paint, **\$105,995**, 732-840-1100 [sales@brennanboat.com](mailto:sales@brennanboat.com) 151854

**See Color Photo on the Internet**

**24' 2002 CENTURY 2560 Deckboat**, 180 Orig.Hrs. Yamaha 225HP 4-Stroke. ClarionFM/AM. Garmin Nav/FF, features everything you need for a day out fishing or w/family&friends! Bimini Top, Wet Bar, Enclosed Head/Changing Area, Etc., **\$16,999**, 732-620-0977 [kaitlynmfallon@gmail.com](mailto:kaitlynmfallon@gmail.com) 151938

**See Color Photo on the Internet**

**29' 2018 MONTEREY 295 SPORT YACHT**, 8.2L I/O, 160 hours, loaded, trailer, **\$140,000 OBO**, 917-817-5084 [esproviero@googlemail.com](mailto:esproviero@googlemail.com) 151848

**See Color Photo on the Internet**

**26' 2003 HYDRA-SPORTS 2600 VECTOR**, excellent condition, ready to sell, **\$34,950 OBO**, 908-489-5098 151127

**See Color Photo on the Internet**

**24' 2000 Sea Master 2588**, Mercury, fishing boat with dual axle trailer. Engine runs good boat is ready for the water, **\$5,900 OBO** Call for info Tommy 908-413-5391 [AKourmouzis@gmail.com](mailto:AKourmouzis@gmail.com) 148014



**See Color Photo on the Internet**

**23' 2010 SEA RAY 230 SELECT**, Merc 5.0L, 130 hours, \$30,900, 732-899-8010 sales@schraderyachts.com 151775

**See Color Photo on the Internet**

**21' 2001 PARKER 21 SPECIAL EDITION**, 150hp Yamaha, 804 hours, VHF, FF, Garmin GPS, \$26,000, 732-899-8010 sales@schraderyachts.com 152019

**See Color Photo on the Internet**

**20' 2003 SUGAR SAND CALAIS**, 210hp Sport Jet, runs great, 40 MPH, \$7,295, 908-309-4016 almaraine1@gmail.com 152017

**See Color Photo on the Internet**

**23' 2002 TROPHY 2352 WA**, 5.7L Merc I/O, marine head, baitwell, 2004 Tidewater tandem trailer, \$14,900, 908-309-4016 almaraine1@gmail.com 150630

**See Color Photo on the Internet**

**21' 1996 SEA RAY Laguna DC**, 225 mercury OB, new interior 03/20. Rebuilt powerhead.04/20.lower unit replaced 2 years ago. Great boat.ez loader tr., \$11,732-580-9901 baranowskimark58@gmail.com 151920

**See Color Photo on the Internet**

**14' 1969 STARCRAFT**, 45 chrysler engine, w/ 9.9 johnson, cover, & trailer; runs good; 2nd owner. sbmax@epix.net, \$3,500, 908-507-9293 sbmax@epix.net 151922

**See Color Photo on the Internet**

**22' 1992 SHAMROCK CENTER CONSOLE**, runs great, gas engine, \$9,500, 908-489-5098 151035

**See Color Photo on the Internet**

**20' 1995 May-Craft**, new Yamaha, \$14,950, 908-489-5098 151124

**See Color Photo on the Internet**

**TOHATSU 150HP BFT 4-STROKE NEW**, 5 YEAR WARRANTY!!! control and cables, tack & harness, key switch, water separator, aluminum prop, \$13,600, 908-309-4016 almaraine1@gmail.com 150629



**DEALER & MARINA INQUIRIES WELCOME**  
Convert Unrented or Undesirable Slips into Cashflow!  
Volume Pricing Program. PWC Ports are in High Demand.

**\*12 MONTH INTEREST FREE FINANCING AVAILABLE**




**PWC DOCKS  
STARTING FROM  
\$1,499**

**CALL FOR  
SPECIALS!**



**732-929-8168**  
3323 ROUTE 37 EAST • TOMS RIVER, NJ  
EMAIL: SALES@JERSEYSHOREDOCKS.COM  
[www.JerseyShoreDocks.com](http://www.JerseyShoreDocks.com)

\*SUBJECT TO CITI BANK REVOLVING CARD CREDIT APPROVAL. \$500 MINIMUM PURCHASE AMOUNT REQUIRED.





## MARINER'S MARINA, INC.

### (609) 698-1222

Fax: 609-698-1469

475 East Bay Ave. Barnegat, NJ

OPEN: MON. - SAT. 9AM - 5PM • CLOSED SUNDAYS



1984 25' Watkins • \$2,800

1987 25' Tanzer,  
trailer • \$2,0001979 25' Seidelmann,  
IB Dsl, new sails, trl • \$2,6001985 37' Seidelmann,  
\$6,500

## WAVERUNNER PORTS AVAILABLE FOR 2021! RESERVE NOW!

Full Service Marina Catering to Sailboats  
Dry Storage • Slips • Clubhouse • Clean Showers  
& Restrooms • Slips Available for 2021

[www.marinersmarinabarnegat.com](http://www.marinersmarinabarnegat.com)

## C&C MARINA

732-237-2222

211 Sloop Creek Rd. Bayville, NJ 08721

[cncmarina.com](http://cncmarina.com)

2016 Berkshire 23RFX STS • Mercury 150hp 4-stroke • \$36,999

## QUALITY PRE-OWNED BOATS & MOTORS

2005 Carolina Skiff 1655, Mercury 50hp 4-stroke ..... \$9,999

### Pre-Owned Trailer

2013 Hoosier BX 224NG-12, hydraulic pontoon trailer .... \$3,550



YAMAHA

MERCURY  
MerCruiserInterlux  
yachtpaint.com

LOADRITE

## RESERVE YOUR 2020 WINTER STORAGE NOW!

Visit Our Facebook Page @candcmarina

# LOCKWOOD BOAT WORKS

## Year Round Storage • Full Service Boatyard

## Reserve Summer Slips for 2021!

**Interlux**  
yachtpaint.com



**MERCURY**  
MerCruiser

Highway 35 • South Amboy, N.J., 08879

web page:

[www.lockwoodboatworks.com](http://www.lockwoodboatworks.com)

732-721-1605

## ALL NEW RELEASE BOATS!!!

23'8" 2018 Release 238 RX, White hull,  
Yamaha 250hp, All Marine trl, SOLD!

## CURRENT POWERBOAT LISTING!!!

28' Southport ('09), Twin Evinrude G2 300hp.....\$115,850  
29' Bimini Express ('90) "OPTICAL ILLUSION", Twin Volvo TAMD41B.....Offer PENDING  
31' Bertram ('79) "TRITON II", T/Cummins V504, sleeps 4 .....\$32,000  
33' Crownline ('06) "GALLIE LOU III", T/Mercruiser 350 Mag.....New Listing \$34,900  
34' Luhrs ('86) "EBBTIDE III" T/Ocean Marine 240hp.....\$29,900

## CURRENT SAILBOAT LISTING!

21' ETAP ('05) "ESCAPE", Torqueedo 3hp Outboard.....New Listing \$25,000  
25' Catalina ('85), 2006 Mercury 9hp 4-stroke outboard .....Price Dropped \$6,500  
33' C&C ('75), Yanmar 3GM30F.....\$19,500  
34' Sabre ('90) "WATERMARK", Westerbeke 27hp.....Offer Pending  
34' Sabre "TEMPEST", Westerbeke 27hp, 2 single, 2 double berths .....New Listing \$35,900  
35' Allied Seabreeze ('66), 2003 Yanmar 29hp.....New Listing \$34,900  
36' Pearson ('80) "ISHTAR", Westerbeke 40hp.....Price Dropped \$20,000  
40' Freedom 40/40 ('95) "STARSTRUCK", Yanmar 3JH@GBE .....Price Dropped \$119,900  
50' Jeanneau Sun Odyssey 5019 14' "L'HEURE BLEUE", Yanmar Dsl.....New Listing \$375,000

# UTSCH'S YACHT SALES

BETWEEN CANAL AND SCHELLENGER'S LANDING

Rt. 109 &amp; Cape May Canal, Cape May, NJ (609) 884-BOAT (2628)

LICENSED

www.capemayharbor.com

INSURED

18' 2002 Aquatron,  
I/O, \$7,00031' 1998 Tiara Express,  
T/Crusaders, \$39,90015' Custom Skiff,  
boat only, \$Call34' 1986 Silverton Convertible,  
T/V8 gas, \$19,90028' 1976 Luhrs Flybridge Sedan,  
Crusader V8, \$3,50021' 1987 Grady White Dual Console,  
150hp Suzuki, trailer, \$10,00028' 1988 Carver,  
T/V6 Mercruisers, sleeps 4-6, \$8,00028' 1995 Bayliner Cruiser,  
V8 Mercruiser I/O, \$10,000

36' 1979 Pacemaker FV Convertible, T/350hp V8.....	\$10,900	29' 1982 Aquasport, T/PCM V8 gas, 330hp each, electronics .....	Reduced \$11,900
36' 1988 Pacemaker FB Convertible, T/Merc 454 cu in V8 gas .....	\$19,900	28' 2005 Pursuit Walkaround, T/Yamaha 225hp OBs, very clean .....	SOLD
36' 1985 PT Trawler, T/Perkins 210hp diesels .....	Owner Wants Offer	26' 2000 Angler Walkaround, trailer, 250hp Johnson OB .....	SOLD
34' 1981 Silverton FB Conv, T/Crusader V8 gas .....	\$8,900	25' 1973 Bristol Sloop, 9.9hp outboard .....	\$2,500
33' 1994 Carver, T/Crusader V8 gas .....	\$30,000		
31' 2005 Carolina Classic Express, T/Volvo Penta D6 310hp Dsls.....	SOLD		
30' 1985 Century 300 Grande, T/V8 gas inboard .....	Reduced \$7,500		
29' 1996 Dawson Express w/tower, T/Cummins Dsls .....	SOLD		
29' 2001 Seamaster Classic, 250hp Mercruiser I/O .....	\$9,900		

## - MISC EQUIPMENT -

Approximately 60 lineal feet of 10' wide concrete,	
Bellingham Marine Floating Docks, very heavy construction .....	\$4,000
1950 Hydraulic Cutterhead Dredge, 471 Detroit Diesel, 6' pump.....	\$49,900

BLAZING  VISUALS

## CUSTOM BOAT GRAPHICS, WRAPS, & REG NUMBERS



BLAZINGVISUALS.COM

CALL CASEY - 732.267.6822

CASEY@BLAZINGVISUALS.COM

SAY YOU SAW IT IN THE SALTY DOG


 /BLAZING\_VISUALS

PROFESSIONAL DESIGN TEAM  
HIGHEST QUALITY MATERIALS



Directions From  
GSP North Or South:  
Exit 74 Lacey Road East  
To Third Traffic Light - Left  
(Jug Handle Before Light)  
Take Manchester Ave. to Route 9-  
Make a Left  
Make a Right onto Bay Way  
(white church on corner)  
**888 Bayway, Lanoka Harbor, NJ**

GSP N► Exit 74 ◄S GSP  
Lacey Rd  
Manchester Ave.  
Third Light  
Route 9  
Bay Way  
LANOKA HARBOR MARINA

# East Coast

## MARINE BROKERS, INC.

### 609-971-8800

Email: [eastcoastboats@hotmail.com](mailto:eastcoastboats@hotmail.com)

OnSite at Lanoka Harbor Marina



**1997 Henriques 38 Sportfish**,  
Repowered In 2020 T/Volvo 480hp TAMD,  
New Interior, Many Updates,  
Owner Moving Up, **\$267,900**



**3/4 Walkaround Model Also Available!**  
**MAINE COASTER**  
by Henriques  
**(Complete Walkaround)**  
**New Maine Coaster Charter Model**



**New Model "Fast Trawler"**  
**Henriques**  
**New Model**  
**Henriques 42 Cruiser**



**1979 Viking 40' Sedan Sportfish**,  
T/Detroit Dsls, Gen, AC/HT, full electronics,  
**\$59,900**



**1998 Chris Craft 320 Express Cruiser**,  
T/Volvo 250hp, Very Roomy, Full Enclosure,  
Well Maintained! **\$29,500**



**2017 Parker 2810 WA**,  
T/Yamaha F-250, 121 Hours, Warranty Til  
202, Like New, **\$138,500**



**1983 Silverton Convertible**,  
2011 Upgraded Power  
T/FWC 350 Crusaders, **\$15,000**



**1986 Ticon 34 Ketch**,  
30hp Volvo Dsl, Many Updates,  
Ready To Sail, **\$49,900**

GO TO **WWW.EASTCOASTMARINEBROKERS.COM** FOR  
COMPLETE LIST & SPECS OF NEW AND PRE-OWNED BOATS!

Since  
1959

# HANCE and SMYTHE INC.

Closed  
Tuesday

## Used Boats Specials!



**2011 Key West 211 DC**,  
Evinrude 175 HP E-tec, livewell,  
stern seats, bimini suntop,  
mooring canvas, **\$24,500**



**1974 Aquasport 24 Center Console**,  
completely refurbished - shows great,  
2005 Yamaha 225hp, t-top, custom  
bow storage w/access hatch, **\$19,750**

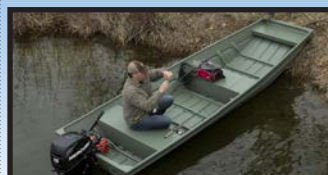


**2019 21' Parker 2120 DV Sport Cabin**,  
Yamaha F200 4-stroke, bow pulpit with  
anchor windlass, rocket launcher, spreader  
light, Seapension helm seat upgrade,  
portable head w/dockside pumpout,  
Garmin GPS, VHF, position indicators for  
t-tabs, Tidewater DA trl, **\$63,450**



**2014 15' Boston Whaler**  
**150 Super Sport**,  
Mercury 60hp 4-stroke, full bow rail,  
seat cushions, bow cushion, **\$15,750**

## Leftover Blowout Models!



**Starcraft 1032 Jon Boat**  
Call for Blowout Price!



**Starcraft 1232 Jon Boat**  
Call for Blowout Price!



**Starcraft 12' Sea Lite**  
Call for Blowout Price!



**Starcraft 14' Sea Farer**  
Call for Blowout Price!

Boston Whaler  
Parker • Key West  
Yamaha  
Evinrude/Johnson

**www.hanceandsmythe.com**  
**(609) 597-7813**

1225 East Bay Ave  
Manahawkin, NJ



**Worldwide Yacht Sales | Yacht Charters | New Yacht Construction**



1980 43' Viking - \$75,000  
Curtis Stokes - 410.919.4900



1978 36' Trojan - \$30,000  
Jason Hinsch - 410.507.1259



1993 32' Wellcraft - \$14,900  
Jack Kelly - 609.517.2822



1995 29' C-Hawk - \$42,500  
Jason Hinsch - 410.507.1259



2000 29' Tiara Yachts - \$65,000  
Michael Behot - 301.788.3576



2011 28' Mako - \$89,000  
Anthony Sayo - 757.427.4042



2013 27' Cherubini - \$237,000  
Jack Kelly - 609.517.2822



1979 26' Slickcraft - \$15,000  
Jack Kelly - 609.517.2822



2003 24' Wellcraft - \$18,000  
Ed Pickering - 410.708.0633



2007 22' Chris-Craft - \$35,000  
David Robinson - 410.310.8855



1983 21' Atlantic City - \$25,000  
Curtis Stokes - 410.919.4900



2009 20' Cherubini - \$89,900  
Jack Kelly - 609.517.2822

To see more details about these and all other yachts around the globe, please visit our website below.

Annapolis, MD • St. Michaels, MD • Delaware City, DE • Deltaville, VA • Woodbridge, VA  
Telephone: 410.919.4900 • Email: [info@curtisstokes.net](mailto:info@curtisstokes.net)

**[www.curtisstokes.net](http://www.curtisstokes.net)**





14 Old Sea Isle Blvd.  
Sea Isle City, NJ 08243 (SI)  
**609-263-2201**  
www.minmar.com



**RESERVE  
WINTER STORAGE NOW!**

New & Brokerage Boat  
Customer Specials!

**Selling Your Boat?  
Three Locations  
Serving All Your  
Brokerage Needs!**



Lavallette, NJ (LV)  
**732-793-7460**  
Lanoka Harbor, NJ (LH)  
**609-242-2200**  
www.oceanbeachmarina.com

**OPEN ALL YEAR!**



33' '01 Wellcraft 300 Martinique,  
T/8.1L I/O, AC, gen, **\$54,900 • SI**



32' '87 Wellcraft St Tropez 3200,  
T/454 FWC, many updates, **\$24,900 • LH**



30' '01 Chaparral 300 Signature,  
T/5.0L, loaded, gen, **\$44,900 • LH**



30' '00 Bayliner 3055 Ciera,  
T/5.7L Bll, gen, 519 hrs, **\$37,900 • LH**



29' '06 Monterey 298 SS, T/250 Mags,  
Blll, large bowrider, **\$49,900 • LH**



**FEATURED  
BOAT**

28' 2005  
Triton 2895  
Center Console  
T/225hp 4-stroke,  
ready to fish,  
**\$58,000 • LV**



25' '01 Baja Outlaw, 496,  
excellent condition, **\$39,900 • SI**



24' '99 Robalo 2420 CC, T/150hp OB,  
t-top, GPS/FF, '06 trl, **\$22,900 • LH**



**SOLD!**

24' '02 Worldcat 246 DC,  
T/125hp OBs, trailer, **\$24,999 • SI**



24' '99 Silverhawk 24CC, 2005 350  
Mag, Blll, ready to fish, **\$26,900 • LH**



23' '93 Grady White 232 Gulfstream,  
T/2006 Yamaha 150hp, **\$31,500 • LV**



**SOLD!**

22' '08 Grady White 226 Seafarer,  
Yamaha 250hp 4-stroke, **\$44,900 • SI**



18' '02 Bayliner 185 Capri, 3.0L  
135hp I/O, trailer, **\$12,350 • LV**



18' '01 Seagull Nautico 18,  
70hp 4-stroke, console cover, **\$8,900 • LV**



17' '75 Boston Whaler Montauk 17 CC,  
60hp OB, trailer, FF, VHF, **\$12,800 • LV**

36' '77 Egg Harbor Sportfisherman.....	LH	\$39,900	24' '99 Silverhawk 24CC.....	LH	\$26,900
33' '01 Wellcraft 3300 Martinique .....	SI	\$52,000	23' '93 Grady White 232 Gulfstream.....	LV	\$31,500
32' '87 Wellcraft St Tropez 3200 .....	LH	\$24,900	23' '10 Horizon SC23 .....	LV	\$14,500
30' '02 Cruisers 3075 .....	LH	\$42,900	23' '15 Sea Hunt 234 Ultra .....	LH	\$59,900
30' '00 Bayliner 3055 Ciera.....	LH	\$37,900	21' '93 Wellcraft V-21 Step Lift.....	LV	\$6,500
30' '96 Wellcraft 302 Scarab.....	LV	\$35,900	20' '05 Baja Outlaw .....	LV	\$15,250
28' '05 Triton 2895 CC.....	LV	\$58,000	18' '01 Seagull Nautico 18.....	LV	\$8,900
28' '86 Proline 28WA.....	LH	\$16,600	18' '87 Sea Ox 180 DC .....	LH	\$12,200
24' '99 Robalo 2420.....	LH	\$22,900	18' '02 Bayliner 185 Capri .....	LV	\$12,350
24' '03 Stingray 240 LR.....	LH	\$15,900	17' '75 Boston Whaler Montauk 170CC	LV	\$12,800

# BOAT BLASTING

**Servicing the  
Entire Tri-State Area  
Fully Insured  
Brick, NJ  
848-333-9723  
AtlanticSodaBlasting.com**

*Atlantic County*  
**MARINE TRANSPORT, LLC**

**BOAT HAULING**  
**UP TO 33'**

**Local/Regional • Fully Insured  
Air-Ride Hydraulic Trailer**

**609-472-4353**

[www.acmarinetransport.com](http://www.acmarinetransport.com)

## MERCUISER REPOWERS!

**383 Factory  
Reconditioned  
Mag Carb (350hp)  
w/factory warranty**

**\$9,000 plus tax  
732-604-5638**

**TAKE YOUR  
BOAT HOME WITH...**

**CMT**

**Complete Marine Transport**  
**INSURED**  
**Local & Long Distance  
Boat Hauling**

*State Of The Art Equipment  
Power & Sail*

**732-291-7766**

**Atlantic Highlands, NJ**

## CAPTAINS LICENSE CLASS



**USCG Approved Course & Test  
No Exam at the Coast Guard**

**SEASIDE HEIGHTS, NJ  
JAN 8-10, 15-17, 22-24**

**732-830-9285**

[www.captainslicenseclass.com](http://www.captainslicenseclass.com)

## WIRE WIZARD MARINE

**Electrical/Electronic  
Specialists**

**Troubleshooting • Repairs  
New Installations**

**732-270-1003  
Toms River, NJ**

## CUSTOM REBUILT CARBURETORS

**Full Line Carburetor Shop  
Also specializing in  
MARINE CARBURETORS**

**ALL CARBS ARE:  
Completely Disassembled • Washed  
and Boiled Out • Recolored • Wet Flow  
Tested • 100% Guaranteed**

**2 Barrels from \$155 • 4 Barrels from \$175**

**• Fast Turnaround Time • Dealers Welcome  
30+ Years Experience  
200A Wood Ave., Middlesex, NJ 08846**

**732-356-4333**

**We Accept Visa and Mastercard**

[www.customrebuiltcarbs.com](http://www.customrebuiltcarbs.com)

## WINTER STORAGE

**Boats up to 25' on your trailer**

**Indoor and Outdoor Available**

**Atlantic County Area**

**No Salt Air**

**Call 609-442-3611  
or 609-287-7144**

**SHIP TO SHORELINE  
MARINE TRANSPORT**

**THE COMPANY  
THAT TRUCKS YOUR BOAT  
ACROSS AMERICA**

**15' - 50' • SERVING 48 STATES**

**904-823-3729**

[www.shiptoshoreline.com](http://www.shiptoshoreline.com)

**VIEW THOUSANDS  
OF NEW & USED  
BOATS ONLINE TODAY!**

## SALVAGE BOAT REMOVAL

**JUNK THAT BOAT OR JET SKI**

**Call 908-868-6026**

**Servicing Ocean County**



## R.J. LAUER BOAT HAULING

### LOCAL & LONG DISTANCE

Hydraulic Trailer  
Power Boats & Sail Boats  
Fully Insured • 30 Years of Experience

CALL OR TEXT 609.548.4383  
53 WATER STREET • BARNEGAT NJ 08005

## CASSIDY'S MARINA

ON THE METEDECONK RIVER

### RESERVE YOUR 2021 SLIP NOW!

Owner Lives On Premises

**732-477-1111**  
www.cassidysmarina.com

## STACERS MOBILE MARINE LLC

"When Performance Counts"

**Engine Repair - Inboard,  
Outboard, Inboard Outboard  
FULL SERVICE SHOP**

Shrinkwrap • Winterization  
24/7 Emergency Service

NJ: (732) 962-0513

197 Princeton Ave • Brick, NJ 08724  
stacersmobilemarine@aol.com

## A-LOT- CLEANER

Junk Boat Removal &  
Disposal  
Debris Removal Dumpsters  
732-244-8980  
www.alotcleaner.com

To Place Your Boat Ad in The Salty Dog,  
see page 56 in this publication  
or visit us on the web [www.thesaltydog.com](http://www.thesaltydog.com)  
Click On "List Your Boat"

Deadlines for  
Next Issue:

NJ - 01.07.2021

CB - 01.14.2021

\* By midnight

## Bristol Canvas Fabrication

Serving Monmouth, Ocean & Atlantic Counties

### ALL YOUR MARINE CANVAS & UPHOLSTERY NEEDS



Interior & Exterior • Upholstery • Enclosures  
Bimini Tops • Mooring Covers • Convertible Tops  
Frame Design & Bending • Sail Covers & Bags  
Dodgers & Spray Hoods • Accessory Covers  
Repairs

**732-262-8844**

**908-814-3315 (cell)**

Find us on Facebook @  
Bristol Canvas Fabrication  
email: [bristolcanvas@msn.com](mailto:bristolcanvas@msn.com)

VIEW  
THOUSANDS OF  
NEW & USED  
BOATS ONLINE!

## JERSEY COAST BLASTING

Cape May County's  
Local Soda Blaster

*Why Pay all the Travel Prices?*

- Bottom Paint Removal & Recoatings
- Best Prices Guaranteed!!
- Your Location or Mine!!
- Free Pick-up & Drop-offs  
Once the Job is Done
- Other Marine Services Available



**609-496-4224**

[WWW.JERSEYCOASTBLASTING.COM](http://WWW.JERSEYCOASTBLASTING.COM)

## Marine Technologies

Surveying and Consulting

*Pre-Purchase • Condition and Value  
Appraisals • Consulting*

### Bruce DeGraw AMS

Graduate of Chapmans School of Seamanship

908-433-5724

3608 Belmar Blvd • Neptune, NJ 07753  
[marinetechsveys@gmail.com](mailto:marinetechsveys@gmail.com)



SOCIETY OF ACCREDITED  
MARINE SURVEYORS, INC



## MARINE TRANSPORT LLC.

Toms River, NJ

**732-270-4848**

[WWW.NJBOATHAULER.COM](http://WWW.NJBOATHAULER.COM)

~ Fully  
Licensed &  
Insured

~ Local &  
Long  
Distance

~ Hydraulic  
Boat  
Hauling for  
Power and  
Sailboats

SAY YOU  
SAW IT IN  
THE SALTY DOG!



**732-288-1000**  
**1219 Fischer Blvd**  
 Toms River, NJ  
[WWW.COTYMARINE.COM](http://WWW.COTYMARINE.COM)



UNTIL DECEMBER 21ST  
 COTY MARINE IS  
 GATHERING GIFTS,  
 NON-PERISHABLE FOODS,  
 ANY GIFT IN NEW CONDITION  
 FOR FAMILIES IN NEED THIS  
 YEAR FOR CHRISTMAS



# Open Between Christmas & New Years! Over 30 Boats on Display **INSIDE!**



**2003 Maxum 370 SY,**  
**\$99,995**



**2013 Crownline 325 Super Sport**  
**\$79,995**



**2019 Sea Hunt 30 Gamefish,**  
**T/OB, Incoming**



**2017 Monterey 355 SY,**  
**T/6.2L MerCs, 74 hours, \$249,995**



**2017 Crownline 26 E6XS,**  
**300hp Verado, \$89,995**



**2019 Monterey M22,**  
**4.5L Mercruiser I/O, \$49,995**



**2014 Monterey 280 SY,**  
**8.2L Merc, \$84,995**



**2007 Robalo R240,**  
**T/150hp 4-strokes, \$49,995**



**2014 Monterey 328 SS,**  
**T/MerCs, loaded, \$119,995**



**2012 Monterey M5 25' Bowrider,**  
**\$54,995**



**2003 Scout 280 Abaco,**  
**T/225hp 4-strokes, \$49,995**



**2013 Four Winns H230,**  
**I/O, \$39,995**

2004 Rinker 312 .....	\$39,995	2015 Avalon 2485 QL, 115hp 4-stroke .....	\$34,995
2019 Sea Hunt 30 Game Fish .....	\$169,995	2013 Four Winns H230, I/O .....	\$39,995
2019 Monterey 298 SS, T/4.5L, Bill .....	\$134,995	2005 Four Winns 220, 350 Mag .....	\$18,995
2006 Monterey 298 SS, 350 Mags, trailer .....	\$49,995	2003 Aquasport 215 DC, 200hp .....	\$19,995
2001 Bayliner 280, 7.4L .....	\$21,995	1999 Seaswirl 210 BR .....	\$9,995
2002 Formula 280 BR, I/O .....	\$34,995	2004 Caravelle 212 .....	\$10,995
2007 Glastron 279 GS, I/O .....	\$28,995	2003 Boston Whaler 210 Outrage, Mercury 225hp .....	\$19,995
2002 Rinker 272 Captiva .....	\$8,900	1989 Grady White 20 Overnighter, 150hp OB .....	\$9,995
2003 Rinker 270 Fiesta Vee, new long block .....	\$9,995	2014 Yamaha AR192, 1.8L Jet, 250hp .....	\$22,995
2008 Four Winns 260, fresh water boat .....	\$24,995	2017 Hurricane 188 SS, 115hp 4-stroke .....	\$Call
1989 Wellcraft 25 Coastal, 150hp 4-stroke .....	\$7,500	2013 Bayliner 185 .....	\$19,995
2005 Cobalt 250, I/O Duo Prop .....	\$24,995	1999 Bayliner 1850 Capri, 3.0L Mercruiser .....	\$2,995
2001 Ebbtide 25 Cruiser .....	\$14,995	2000 Sea Ray 180 BR, Mercury OB .....	\$5,995
2000 Monterey 242 Cruiser .....	\$9,995		
2004 Wellcraft 252 Coastal, T/150hp, low hrs .....	\$29,995		

**MERCURY**  
 MerCruiser





# Holiday Sales Event



It's 75° and Sunny  
Everyday In Our Showroom!

**MONTEREY  
BOATS**

**BLACKFIN**

On Display in  
Showroom!

M65



On Display in  
Showroom!

332 CC



Over 30 of the Hottest Models  
in the Industry on Display in our  
**HEATED INDOOR SHOWROOM!**

**Avalon**

**(KW) KEY WEST**

On Display in  
Showroom!

2485LSZQL



239 FS

On Display  
in Showroom!



732-288-1000 • 1219 Fischer Blvd • Toms River, NJ

[WWW.COTYMARINE.COM](http://WWW.COTYMARINE.COM)

**MERCURY**  
MerCruiser



# THINKING of SELLING?

Call us for a **FREE MARKET ANALYSIS** on your boat!

LOW BROKERAGE COMMISSIONS • THE MID-ATLANTIC'S LARGEST BOAT BROKER • FREE LAND STORAGE PROGRAM



33' '19 Regal OX  
\$289,900



Like New!

51' '16 Sea Ray 510 Fly  
Stock #PA794 • \$999,995



35' '03 Henriques Express  
Stock #PA811 • \$189,000

VISIT OUR  
WEBSITE  
TO VIEW  
ALL OUR  
LISTINGS!



In Stock!

2021 24 Coupe 242



In Stock!

2021 24 Dual Console



In Stock!

2021 24 Center Walk



On Order!

Flyer 8 Sundeck



In Stock!

Antares 27



In Stock!

Gran Turismo 36



# 10% OFF

NEW CUSTOMER DISCOUNT  
FOR 55' - 65' SLIPS

34' - 65' Slips Available  
find your 2nd home on the water 5 Min from the ocean



FULL SERVICE MARINA  
5 MINUTES FROM THE OCEAN  
NEW DOCKS  
FREE MEMBERS ONLY EVENTS  
DOCKSIDE BAR & GRILL  
VALVTEC FUEL  
SHIP STORE BAIT & TACKLE  
NEW LOCKER ROOMS  
CONVENIENT PARKING  
1 MILE FROM BEACH



# CLARKS LANDING

YACHT SALES

732-899-5559 • [www.clarkslanding.com](http://www.clarkslanding.com)