

Free!



The



## BOAT AND MARINE SERVICES

Distributed throughout New Jersey, Eastern Pennsylvania, Staten Island & Northern Delaware

For Private Boat & Sailboat Information See Page 57



46' 1980 VIKING SF, Handyman Special, Detroit Diesel 671N, port engine being replaced for Spring 2021 launch, boat needs TLC -interior/exterior, pics are from '13 - boat needs work, please text or call me for more info, \$30,000, 732-500-2032, rlin0926@gmail.com 152470



23' 2013 PRO-LINE EXPRESS, Merc Verado 300, appr. 130 hrs, GPS/FF, porta head, sink, live/baitwells, clean boat, dual batteries, bought new as leftover in 2015, \$48,000, 609-709-5937, tjanuto@gmail.com 142456



25' 2018 GRADY WHITE 257 FISHERMAN, 2021 SPRING SPECIAL! F150 Yamahas, low hrs, 7/23 warranty, factory options, Garmin GPS radar, Icom 504 radio, outriggers, fish inshore/offshore, family cruising, like new, MAKE OFFER! \$118,000, 302-226-3734, Cell 302-218-9325 144975



28' 2002 TRITON CENTER CONSOLE, \$39,500 • Call or Text Rob 908-489-5098

**List Your Boat  
for As Low As  
\$49!**

Go to [www.thesaltydog.com](http://www.thesaltydog.com)  
to get started!

Private Boat Ads Only



29' 2018 MONTEREY 295 SPORT YACHT, 8.2L I/O, 160 hours, loaded, trailer, \$140,000 OBO, 917-817-5084, esproviero@googlemail.com 151848



23' 2006 GRADY WHITE 232 GULFSTREAM, new '19 repower, loaded, autopilot, twin screens, outriggers, new 2020 trailer, \$50K in upgrades, \$69,900 • Call or Text Rob 908-489-5098



33' 1999 FOUNTAIN 10M, T/502 fuel injected rebuilt in '19, TRS drives, Velvet drive trans, IMCO helm, external hydraulic steering, 80+ MPH, Myco trailer, \$29,900, 609-693-9423, tidesendmarina1@gmail.com 151683



33' GRADY WHITE EXPRESS, dsl gen, new elects, new canvas, bottom blasted & repainted '19, perfect condition, windlass, AC/HT, 850 hrs, one owner, cleanest one on the market, like new, \$165,000 • Call or Text Rob 908-489-5098

Now Is The Perfect Time To Shop Your Insurance Premium  
with The Professionals at Bay Marine

**BAY MARINE**  
Yacht Insurance

**888-718-3900**

[www.bayagency.net](http://www.bayagency.net)

See Our  
Display Ad on  
Page 31

# Experience the Ultimate Fishing Pilot & Cabin Boats

CALL OR TEXT  
ROB  
908-489-5098

**FREE**  
SEA-TRIAL  
NO DEPOSIT NEEDED



Belmar NJ

**NorthCoast**

31' CALL FOR PRICE

CABIN MODELS 21' 23' 25' 28' 31'

28' TWIN 300'S



CALL FOR PRICE

25' TWIN 250'S



CALL FOR PRICE

23' 250HP



\$499 PER/Mo. \$399 PER/Mo.  
CALL FOR DETAILS CALL FOR DETAILS

21' 200HP



CALL FOR DETAILS

**25% OFF**  
YAMAHA & SUZUKI OUTBOARDS  
CALL TODAY

up to 25% off  
SELECT MODELS

CALL OR TEXT ROB 908-489-5098

CENTER CONSOLES  
18' 19' 21' 23' 26' 28'

**NorthCoast**

23'



CHECK OUT ALL NEW 23' 250HP YAMAHA

**SEAPORT INLET MARINA**  
610 5th Ave Belmar, NJ



# Come see why everyone is buying Cape Horn Boats

17' 22' 24' 27' 31' 32' 34' 36'

36' triple Yamaha's  
Starting \$339,000

36'

Unsinkable

## The Perfect Beast!

34'

New model for 2021



Twin 425's Yamaha's

32'

\$1399 per mo.



Twin 300's Yamaha's

27'

\$899 per mo.



Twin 225's Yamaha's

24'

\$699 per mo.



Twin 150' OR 200'S Yamaha's

22'

\$499 per mo.



300's or 350hp

WOW!

**NJ'S**  
Exclusive  
Dealer

\*Prices are based on models with no upgrades • Trailers not included • Upgrades consist of hard top, captains chairs, powder coating, vac head, windlass, electronics, underwater lights, extra rod rack, maximum horsepower, tax, dealer prep, financing charges & DMV are not included with 10 to 20% down • Call dealer for details

Call or Text Rob Today 908-489-5098

**SEAPORT INLET MARINA**  
610 5th Ave Belmar, NJ



## ADVERTISERS INDEX

A LOT CLEANER.....	64	HANCE AND SMYTHE.....	34-35, 61
ACTION YAMAHA .....	44	HOBBY LOBBY .....	47
ALL ABOARD MARINE TRANSPORT .....	64	HOFFMANS YACHT SALES.....	9
ALL POINTS MARINE SERVICES .....	6, 29	INMAR MARINE .....	40
ALMAR MARINE LLC.....	50	JARVIS MARINE .....	5
ALMARS OUTBOARD.....	55	JERSEY CAPE YACHT SALES .....	48
ANCHOR MARINE.....	54	JERSEY COAST MARINE.....	64
ATLANTIC COASTAL WELDING.....	8	JJ BEST BANC AND CO.....	42
ATLANTIC COUNTY MARINE TRANSPORT.....	65	LAUREL HARBOR MARINA .....	46
ATLANTIC HIGHLANDS.....	8	LOCKWOOD BOAT WORKS.....	60
ATLANTIC LIFTS & DOCKS.....	51	M AND M DOCK KING .....	45
ATLANTIC SODABLAST.....	65	MARINE TECHNOLOGIES .....	64
BAKER'S MARINE GROUP .....	52	MARINERS SUN HARBOR .....	51
BALTIC MARINA.....	50	METAL CREATIONS .....	56
BAY AGENCY .....	31	MID-ATLANTIC MARINE LLC.....	65
BAYWOOD MARINA .....	31	MORGAN MARINA.....	56
BLAZING VISUALS .....	52	NEW JERSEY OUTBOARD .....	22-23
BOAT REMOVAL .....	65	OCEAN BEACH MARINE CENTERS.....	63
BRENNAN BOAT COMPANY .....	6	OCEANPORT LANDING.....	15
BRISTOL CANVAS FABRICATION.....	64	POLYDOCK PRODUCTS .....	41
BRY'S MARINE .....	19	R.J. LAUER BOAT HAULING.....	64
C&C MARINA .....	60	RBP GROUNDS .....	65
CAPE HARBOR MARINE.....	26-27	RED BANK MARINA .....	61
CAPTAIN'S LICENSE CLASS .....	65	RIPTIDE MARINE CENTER.....	7
CASSIDY'S BRENTONWOOD MARINA.....	64	RUDY MARINE.....	43
CDN MARINE SERVICE.....	49	SCHOONER ISLAND MARINA .....	20-21
CLARKS LANDING.....	68	SCHRADER YACHT SALES/CANAL POINT.....	12-14
COMPLETE MARINE TRANSPORT.....	65	SEAPORT INLET MARINA .....	2-3, 53
COMSTOCK YACHT SALES .....	36-37	SHIP TO SHORELINE TRANSPORT .....	65
COTY MARINE.....	66-67	SOUTH HARBOR MARINE.....	32
CURTIS STOKES.....	62	STACER'S MOBILE MARINE.....	64
CUSTOM REBUILT CARBURETORS .....	65	STATEWIDE MARINE.....	11
D&R BOATWORLD .....	17	STONE HARBOR YACHT SALES .....	10
DEEP CREEK COVE MARINA.....	25	TIDES END MARINA .....	49
DEEP WATER LANDING .....	24	TOMS RIVER MARINE .....	40
DILLONS CREEK MARINA .....	30	TOMS RIVER YAMAHA .....	33
DISTINCTIVE INTERIORS.....	60	TOW BOAT US .....	51
DRB MARINE LLC .....	47	VALHALLA BOAT SALES .....	16
EAST DOVER MARINA.....	18	WATERFRONT MARINE.....	39
FISHER CANVAS PRODUCTS .....	46	WAVE ARMOR .....	47
GATEWAY MARINA.....	38	WEHRLen BROTHER MARINA.....	50
GOOD LUCK POINT MARINA .....	28	WIRE WIZARD .....	65



# JARVIS MARINE

www.jarvismarine.com

234 Radio Road  
Tuckerton, NJ 08087  
**609-294-1140**

## GET YOUR NEW BOAT OR MOTOR ORDERS IN NOW TO BE BOATING THIS SUMMER!

**GLASSTREAM**

**- LEFTOVER SPECIALS -**

**BLUEWATER**  
SPORTFISHING BOATS, INC.



LEFTOVER 36' Glasstream  
no power, loaded, elec • \$110,000 **OR**  
Triple 300hp Yamahas, loaded, elec • \$185,000



LEFTOVER 2150 CC,  
9 year engine warranty • \$56,000

### 2021 BOATS ON ORDER!



23 Pilothouse



20 Cape Classic



2300 CCX



**EVINRUDE**



Over 10 Years!

**E-TEC™**



**YAMAHA**



**NEW YEAR SALE** **EVINRUDE** **G1 AND G2!**  
**UNBEATABLE DEALS ON E-TEC REPOWERS!**

### - Quality Pre-Owned Boats, Motors & Trailers -

26' '96 Robalo WA, T/225hp Johnson, trailer .....	\$Call
25' '90 Hydrasports WA, 2004 250hp Evinrude w/new powerhead, 30 hours .....	\$11,995
23' '87 Grady White WA, 1994 225hp Mercury Optimax, trailer .....	\$12,900
23' '05 Sea Fox CC, 150hp Merc .....	\$14,900
23' '08 South Bay Tri-Toon, Volvo 220hp I/O .....	\$19,995
18' '08 Carolina Skiff 18 JVX, 60hp E-Tec, roller trailer .....	\$6,999
19' '17 Clearwater Outcast, 150hp E-Tec .....	\$15,995
2016 Evinrude E-Tec 50hp, low hours, controls .....	\$4,000
2016 Evinrude E-Tec 50hp .....	\$3,500
2013 Evinrude E-Tec 75hp, tiller, fresh water .....	\$4,000
2013 Evinrude E-Tec 115hp, 25" shaft .....	\$4,500
2015 Evinrude E-Tec H0 135hp, 25" shaft .....	\$6,000
Pair of 175hp E-Tecs, with rigging, will separate .....	Pair \$15,000
2003 Tandem Bunk Trailer, 22' - 23' .....	\$900

**Open 7 Days A Week • Mon-Sat 8am - 5pm • Sun 8am-3pm • Stop In and Talk to Our Sales Staff Today!**





# All Points Marine Services

Your trusted boating experts

[www.allpointsmarineservices.com](http://www.allpointsmarineservices.com)

## 848-232-4292

[sales@allpointsmarineservices.com](mailto:sales@allpointsmarineservices.com)

320 Hawthorne Ave (Rt 35 North)

Point Pleasant Beach, NJ 08742

# BOATS IN STOCK AND READY TO GO!



# CENTURY

B.O.A.T.S

## DEMAND IT ALL



In Stock  
Now!

**2600 CC**  
**T/Yamaha 200hp**  
**\$132,000**



In Stock  
Now!

**24 Resorter**  
**\$105,000**



In Stock  
Now!

**2200 CC**  
**\$69,500**



# YAMAHA

DEMAND IT ALL with Century  
Fishability • Luxury • Reliability

## Looking to Sell Your Boat?

### NOW IS THE TIME!

Let Brennan Boat Company Put Our  
30+ Years of Expertise to Work for YOU!



OPEN 7  
DAYS!

tel 732-840-1100  
fax 732-840-1171

**BRENNAN BOAT**  
COMPANY &  
MARINA INC.

831 ROUTE 70 E.  
BRICK, NJ 08724

FIND US!

[www.brennanboat.com](http://www.brennanboat.com)

[sales@brennanboat.com](mailto:sales@brennanboat.com)



# MOST MODELS IN STOCK NOW!

Up to  
**6 Year Engine  
Warranty  
FREE**

## CAROLINA SKIFF

**#1 Dealer in the  
Tri-State Area!**



**162 • 178 • 192 JLS**



**17-21 LS**



**23 LS**



**21 ULTRA**

## SEA CHASER

**HUGE FACTORY REBATES!**

**Innovative. Performance. Versatile.**



**20 HFC**



**22 HFC**



**24 HFC**

## STINGRAY Boats



**172 SC**

cockpit cover, stereo, bimini,  
\$Call



**212 SC**

Yamaha power, cockpit cover,  
stereo, loaded, \$Call



**201 DS**

Yamaha power, cockpit cover,  
stereo, loaded, \$Call



**231 DC**

Yamaha power, cockpit cover,  
stereo, loaded, \$Call

### - Pre-Owned Specials -



**2018 Stingray 206 CC**, 2018 Yamaha F150, loaded, SS ski tow bar, bimini top, livewell, leaning post, Garmin GPS/FF, stereo, warr til 5/2023, potti, **\$34,995**



**2016 Stingray 214 LR**, Yamaha F150, bimini, full cover, stereo BT, fresh H2O, **\$33,499**



**2015 Key Largo 2100 CC WI**, 150hp Mercury 4-stroke, t-top, trailer, elects, rocket launchers, livewell, **\$32,995**



**2019 Sea Chaser 22 HFC**, 150hp Evinrude, warranty til 2024, GPS, FF, livewell, trailer, **\$47,995**

## Riptide Marine Center

[www.riptidemarinecenter.com](http://www.riptidemarinecenter.com)

856 Route 9 • Bayville, NJ 08721 • 732-228-7202

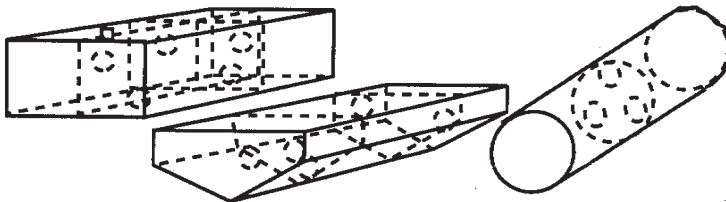


# MARINE FUEL TANKS

[www.speedytanks.com](http://www.speedytanks.com)

## Any Size - Any Shape

Aluminum Tanks For Gas or Diesel  
Tested & Built To U.S.C.G. Spec.



**5 DAY  
TURNAROUND**

**800-434-TANK**

OR FAX A DRAWING

1-732-269-7992

**ATLANTIC COASTAL WELDING INC,**

Bayville, NJ

## REPAIRS

Fuel Tanks • Engine Blocks  
Cavitation Plates  
Trim Tabs — Skegs ...  
Guaranteed To Look &  
Perform Like New

UPS



# 2021 SLIP SPECIAL!

**SELECTED SLIPS AVAILABLE**

**23' - 30' Slips**

**Starting at \$1,610**

New  
Jet Ski  
Slips  
Available!

Sailboat  
Moorings  
Available!

***Transient Slips • Fuel***

***Pump Out Service***

***3 Miles to Ocean - No Bridges***

***Atlantic Highlands Municipal Harbor***

**732-291-1670**

**[ahharbor@ahnj.com](mailto:ahharbor@ahnj.com) • <http://ahnj.com/ahnj/Harbor/>**



# Hoffman's

## 732.528.6200

608 Green Ave • Brielle, NJ 08730

[www.HoffmansBoatSales.com](http://www.HoffmansBoatSales.com)

**WE  
TAKE  
TRADES!**

# SOLACE

**WE  
FINANCE  
BOATS!**

**ARRIVING  
SOON!**

*By Stephen Dougherty*

**PROUD TO ANNOUNCE  
WE ARE NJ'S  
EXCLUSIVE DEALER**

## 41CS



# SPORTSMAN

## TAKING ORDERS ON 2022 BOATS NOW!

**232 Open**  
Yamaha power

**In Stock!**

**Loaded!**



**MSRP: \$114,285**  
**Internet Sale Price: \$81,840**

**242 Open**  
Yamaha power

**In Stock!**



**MSRP: \$136,530**  
**Internet Sale Price: \$96,720**

**302 Open**  
Yamaha power

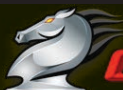


**ORDER NOW!**

## COMING SOON!



# CAMPION



# CHECKMATE

**USED  
BOATS  
NEEDED!  
CASH PAID!**

**BROKERAGE BOATS WANTED! LIST WITH US! FISH BOAT SPECIALISTS!**



# YAMAHA



**609-368-1141**[www.stoneharboryachts.com](http://www.stoneharboryachts.com)

Sales Service Slips



Now  
is the Time  
to Buy!

**Everglades®**





609.693.9355  
2 Point Road  
Waretown, NJ 08758  
[www.statewidemarine.com](http://www.statewidemarine.com)

# WE HAVE INVENTORY!



**In Stock!**



**In Stock!**

**SUNDANCE**



IN STOCK!



IN



IN STOCK!

# SEA BORN



*South Bay*  
Pontoons 20' - 26'

Many Models Available To Choose From! Call for Details!



## 150 Yamaha



## 115 Yamaha



## 2021 115hp Yamaha



A BETTER WAY TO BOAT

*Stop In To Reserve  
A 2021 Slot Now!*



**280 DC-X**



**325 DC**



**255 DC**



**230 DC**

**COME EXPERIENCE A WORLD CAT TODAY!**

## SCHRADER YACHT SALES

on the Pt Pleasant Canal

1723 Bay Avenue • Point Pleasant, NJ 08742

**Sales • 732-899-8010**



Visit  
[www.schraderyachts.com](http://www.schraderyachts.com)  
To See Our Inventory of New & Used Boats





# Chris★Craft®

Experience our full range of boats at  
[www.chriscraft.com](http://www.chriscraft.com)

THE ULTIMATE ENTERTAINER  
CALYPSO 35



LEAVES OTHERS IN ITS WAKE  
CALYPSO 30



New Jersey's  
Exclusive  
Dealer!

ONE CENTER CONSOLE  
REDEFINES THE SEGMENT.

THE CATALINA 34



## SCHRADER YACHT SALES

### Sales • 732-899-8010

Visit our Website at: [www.schraderyachts.net](http://www.schraderyachts.net)

on the Pt Pleasant Canal  
1723 Bay Avenue  
Point Pleasant, NJ 08742



## MERCURY

**Full Service Marina Offering Everything from  
Expert Detailing, Expert Fiberglass and Paint  
Repairs and Complete Engine Repairs and  
Repowers on Yamaha, Mercruiser and Mercury.**

*Offering over  
86 years of  
combined experience  
with Yamaha Master  
Technicians on staff*



*Proudly  
Serving the  
East Coast  
for 40 Years!*



*Ship's Store  
and  
Showroom*



**MERCURY**  
MerCruiser  
**VERADO**  
**YAMAHA**

FACTORY AUTHORIZED  
PARTS • SERVICE • WARRANTY

**Call for Service at 732-899-1797 • Pat Barry, Service Manager**



*Chris★Craft®*

**SCHRADER YACHT SALES**

on the Pt Pleasant Canal

1723 Bay Avenue • Point Pleasant, NJ 08742

**Sales • 732-899-8010**







[oceanportlanding.com](http://oceanportlanding.com)

***SLIPS FOR 2021 - \$120 ft.***  
*- Reserve Your Slip Now -*

**Family Run, Full-Service Marina**  
***Located on the Jersey Shore in***  
***Monmouth County, on the Shrewsbury River***

- ♦ 85 Deep-water Slips 20' to 60'
- ♦ Floating Docks with Water and Electric
- ♦ Located on the Federal Channel
- ♦ Dockside Parking on 3 Acres
- ♦ Picnic Area with Grills
- ♦ Rest Rooms with Private Showers
- ♦ Winter Storage, Wet or Dry, to 65'
- ♦ 30-Ton Open-end Travelift
- ♦ Complete Hull/Engine/Generator Maintenance and Repairs
- ♦ Certified Mechanics Year Round
- ♦ Marine Store on Premises
- ♦ Transient Slips Available

Enjoy cruising the protected Shrewsbury and Navesink Rivers, explore Sandy Hook Bay, and venture into the Atlantic Ocean.

Ten-minute drive from Exit 105 off the Garden State Parkway.

Located at the end of a residential street in the quiet Borough of Oceanport.

Monmouth Park Race Track, Beaches and County Parks, Pool, Restaurants and Laundry, Monmouth Mall Shopping, all just minutes away.

## 2021 Boat Slip Discount

**10% OFF\***

*Hurry, Before Offer Expires!*

\*NEW CUSTOMERS ONLY

**Oceanport Landing Marina**

732-229-4466

[oceanportlanding.com](http://oceanportlanding.com)

## Trailer/Boat

Summer Storage - under 25'

**Free Ramp Nearby**

Pick up your boat, launch and use it for the day, bring it back to the yard and head home!

**\$700<sup>00</sup>** May 1 to Oct 15

417 River Street, Oceanport, NJ 07757  
 (732) 229-4466 • (732) 870-3651 Fax  
[info@oceanportlanding.com](mailto:info@oceanportlanding.com)

# CONTENDER



**valhalla**  
Boatworks



\*Payments based on 15% down, 15 year term and qualified credit score.



2018 Sportsman 247 Master,  
300hp Yamaha, trailer,  
excellent shape • \$79,900



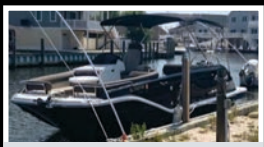
2016 Contender 30T,  
T/Yamaha 300XCA, 272 hrs, t-top,  
outriggers, \$189,900



2019 Contender 35ST,  
Triple 350hp Verados, Marlin tower,  
\$389,000



2020 Contender 39ST,  
Triple Yamaha 300hp, loaded, elec,  
like new, \$475,000



2017 Bayliner XR7,  
150hp Mercury 4-stroke, 90 hours,  
bimini, \$42,000



2015 Contender 39 ST,  
Triple F350hp Yamahas, \$359,900



2015 Boston Whaler 370 Outrage,  
Just In!  
\$359,900



2019 21' Boston Whaler  
210 Montauk • \$75,900



2015 Scout 300 LXF,  
T/Yamaha 300XCA, 340 hours, t-top,  
GPS, AP, radar, \$185,900



2018 Boston Whaler 330 Outrage  
T/Verado, loaded, low hours,  
\$269,000



2018 32' Cape Horn 32XS,  
T/Yamaha 300hp, turn key, \$225,000



2014 32' Contender 32 ST,  
T/Yamaha 300hp, full electronics  
package, \$189,900



2014 19' Boston Whaler  
170 Montauk • \$31,900



2018 27' Grady White 271 Canyon  
\$189,900



2020 33' Southport 33FE  
Triple Mercury Verado 350s,  
\$379,000

SELLING YOUR BOAT? LIST WITH US! [WWW.VALHALLABOATSALES.COM](http://WWW.VALHALLABOATSALES.COM)

Barnegat Bay Marina  
"Base of the Mantoloking Bridge"  
29 Mantoloking Rd • Brick, NJ 08723

**732-704-3035**

**valhalla**  
BOAT SALES

**YAMAHA**

5724 Route 9  
"On The Bass River"  
New Gretna, NJ 08224

**609-296-2388**



# Escape The Frigid Weather **OUTSIDE** And Come Board New Boats **INSIDE!**

*We follow all CDC guidelines  
for your complete covid safety!*

Shop the latest models in our HUGE climate controlled

## **Green Brook Showroom**

Take advantage of  
factory incentives  
available on most  
new 2021 boats  
**IN-STOCK NOW!**



**CROWNLINE**

**ROBALO**



**STEIGER CRAFT**



**FINSEEKER**



Celebrating our 65th year.  
Continuously family  
owned and operated.



**RANGER PONTOONS**

Serving New Jersey's Boaters Since 1956

# **D&R**

**BOAT WORLD**

[www.dnrboatworld.com](http://www.dnrboatworld.com)

*Both NJ locations open year-round*

**Rt 22, Green Brook 732.968.2600**

**Rt 70, Brick 732.840.2020**

at Brennan Boat  
Sales and Marina



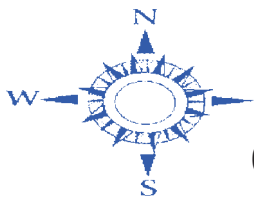


LIVE THE  
**SEA-DOO®**  
LIFE

Remember  
to Buy  
Where You  
Ride!

# Act fast. Ride fast.

2.99% financing for 36 monthst  
on select 2021 Sea-Doo models



## East Dover Marina, Inc.

605 Fischer Blvd. Toms River, NJ 08753

# 732-270-1104

[www.eastdovermarina.com](http://www.eastdovermarina.com)



**B.E.S.T.**  
Extended Service Term

©2020 Bombardier Recreational Products Inc. (BRP). All rights reserved. \*, TM and the BRP logo are trademarks of BRP or its affiliates. In the U.S.A., products are distributed by BRP US Inc. Offer is valid in select markets only, from September 11, 2020, to October 15, 2020. Eligible units are select 2021 Sea-Doo® watercraft models sold and warranty-registered during the promotional period. The terms and conditions may vary and these offers are subject to termination or change at any time without notice. † Financing as low as 2.99% APR for 36 months: Eligible units are select new and unused 2021 Sea-Doo models purchased from a participating BRP dealer. For example, on a purchase of an eligible unit where the amount financed is \$10,000, your down payment is \$0 with 36 monthly payments for tier A and B customers only: \$290.77 each. Interest rate is 2.99% [ANNUAL PERCENTAGE RATE 2.99% (E)]. Tier A and B customers only. The above financing programs are offered by Sheffi-ld Financial, a division of Trust Bank, FDIC member. Approval, and any rates and terms provided, are based on creditworthiness. Tiers will be based on the customer's credit score obtained by Sheffi-ld Financial. Rates advertised are based on tier A and B customers with credit scores of 700 or higher. An origination fee of \$0 will be added to the amount financed in the above example. Other fees may apply. BRP is not responsible for any errors, changes or actions related to financing provided by Sheffi-ld Financial. Down payment may be required. [E] means estimate. Financing as low as 2.99% APR for 36 months: The foregoing financing program is offered by Roadrunner Financial, Inc. Neither BRP US Inc. ("BRP") nor its affiliates shall be held responsible for this financing program as they relate to this program. This is not an offer of credit. Not all customers will qualify for the above listed program. Approval, rates, minimum purchase requirements and terms advertised are based upon a minimum [700] credit bureau (FICO®) score and overall creditworthiness. FICO® credit score, key factors and other credit information are based on data from Experian® and may be different from other credit scores and other credit information provided by different bureaus. UCC filing fee may be charged. Offer not valid for units used for commercial or business purposes. All applicants are subject to credit approval. Other qualifications and restrictions may apply. Minimum amount financed: \$1,500. Maximum amount financed: \$50,000. Other financing offers are available. Offer subject to change without notice. Financing promotions void where prohibited. Carefully read the operator's guide and safety instructions. Observe applicable laws and regulations. Always wear appropriate protective clothing, including a personal flotation device and wet suit bottoms. Riding, alcohol and drugs don't mix. See your authorized BRP dealer for details and visit Sea-Doo.com.



# BRY'S MARINE

SALES  
SERVICE  
PARTS

HWY 35 • NEPTUNE, NJ

**732-775-7364**

[www.brysmarine.com](http://www.brysmarine.com)

**OPEN:**  
**MON - SAT.**  
**9:00 - 5:30**  
**Closed SUN**

## DuraNautic® BOATS



## May-Craft

The Perfect Craft for Your Sport



2021 Maycraft 2000 CC  
includes Evinrude Rebates \$1,500  
white hull, 2020 Evinrude 150 G2 E-Tec -  
Full Factory Warranty, t-top, 2021 Load Rite 2700lb trailer



2021 CAPE CLASSIC 20



2021 CAPE CLASSIC 1800 CC

RELIABLE, DURABLE HIGH QUALITY OUTBOARDS SINCE 1956



2.5hp to 250hp In Stock  
5 Year Engine Warranty



2020 E25 20" TILLER  
SALE \$4,499 • REBATE \$400  
FINAL SALE: \$4,099

2018 E25 20" REMOTE  
SALE \$4,129 • REBATE \$400  
FINAL SALE: \$3,729

2020 E115 25" REMOTE  
SALE \$9,199 • REBATE \$900  
FINAL SALE: \$8,299

2020 E150 25" REMOTE  
SALE \$12,545 • REBATE \$1,400  
FINAL SALE: \$11,145

Limited to in stock motors only!  
All engines have 3 year Manufacturer Warranty  
and needs to be registered to customer by April  
30, 2021 to qualify for program benefits!

## YOUR SERVICE & PARTS SPECIALISTS

**EVINRUDE**



BRP Platinum Dealer BRP Factory  
Authorized & Trained Technicians



## YOUR TRAILER HEADQUARTERS!



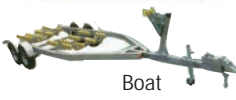
Enclosed



Hydraulic Dump



Utility and  
Landscape



Boat



NOW  
ACCEPTING  
ORDERS  
FOR 2022!

2021 MODELS SOLD OUT!





# SCHOONER ISLAND MARINA

South Jersey's  
Exclusive Dealer for:

*SunChaser*

**STARCRAFT**  
MARINE

**10 Ton  
Forklift**



**Certified  
Honda,  
Yamaha  
and Suzuki  
Techs On Site**



**50 Ton Travel Lift**



**Reserve  
Summer Slip Now!**

Fuel Dock w/bait & pump-out • Pump out behind every slip  
Electric for every slip • Free Wi-Fi • Free Comcast Cable TV  
Free Water • Heated Pool • Laundry Mat on site  
Full Ship Store • Heated & AC Bathroom • Dock Attendance

Slips Available  
For 2021 Season  
Slips from 17' - 110'



**Certified Dealer**

**HONDA**  
**MARINE**  
**SUZUKI**  
MARINE

**YAMAHA**

**Parts • Sales • Service**

Service Department Open Mon-Sat • 8am-4:30pm

**3.5%  
Sales Tax**

**5100 Lake Road  
Wildwood, NJ 08260  
609.729.5100**

[www.schoonerislandmarina.com](http://www.schoonerislandmarina.com)

**Interlux**  
yachtpaint.com



# McKee

**YACHT SALES**  
at Schooner Island Marina

## Call Now For Your Best Deal!

[www.mckeeyachtsales.com](http://www.mckeeyachtsales.com)



*SunChaser*

22' Geneva  
150hp Yamaha  
Call for  
Special Price!

*SunChaser*



22' Classic  
Cruise

IN STOCK  
& READY  
TO GO!



**STARCRAFT**  
MARINE

210 MDX

IN STOCK  
& READY  
TO GO!

**STARCRAFT**  
MARINE



230 MDX



## THINKING OF SELLING?

**We Are Now Taking  
Brokerage Listings!  
List Your Boat Here!  
We Will Sell It!**

**Complete Marine Maintenance Facility**  
**Certified Honda**  
**Yamaha • Suzuki Techs**  
**On Site**

**Reserve  
Summer Slip  
Now!**

**5100 Lake Road • Wildwood, NJ 08260**

**609.729.5100**

[www.schoonerislandmarina.com](http://www.schoonerislandmarina.com)







**New Jersey Outboards**  
 105 Rt. 9 • Bayville, NJ  
**SALES & SERVICE**  
[www.njoutboards.com](http://www.njoutboards.com)  
**732-505-3002**

# PRE-OWNED CLEARANCE SALE!



29' '07 Monterey 298SS,  
T/350 I/Os, radar arch, **\$59,900**



27' '06 Glastron GS279 Cruiser,  
5.7L, bimini, covers, **\$15,995**



25' '19 Nauticstar 25XS,  
T/150hp Yamaha 4-strokes, mint,  
low hours, **\$99,995**



25' '14 Sanpan 2500 Bar,  
triple tube, 350hp Yamaha 4-stroke,  
140 hrs, loaded, **\$49,995**



25' '19 Crownline E255XS,  
250hp 4-stroke, low hrs, trailer, like new,  
**\$89,995**



24' '07 Sea Strike 2400 CC,  
250hp Yamaha 4-stroke, GPS/FF/DF,  
**\$28,995**



24' '16 Aquapatio AP240CB,  
tritoon, Yamaha 150hp 4-stroke, super  
clean, well equipped, **\$46,995**



24' '20 Hurricane Sundek 2486 OB,  
Yamaha 250hp V-Max 4-strokes, GPS, DF,  
FF, bimini, like new, **\$64,995**



24' '14 Premier Sunsation 240,  
115hp 4-stroke, bimini, GPS, FF, DF,  
**\$27,995**



24' '19 Yamaha 242 SE Limited,  
T/Yamaha Jet, wakeboard tower, trailer,  
**\$69,995**



23' '12 Crownline 236 CR,  
5.0L, trailer, **\$34,995**



23' '17 Sportsman 232 Open, 200hp  
Yamaha 4-stroke, low hrs, lift kept, elects,  
**\$61,995**



22' '20 Godfrey Sweetwater 2286,  
Yamaha V-Max 200hp, triple tube, loaded,  
**\$49,995**



22' '15 Sea Chaser 22 HFC,  
175hp, trailer, **\$41,995**



21' '20 Hurricane Sundek 217 OB,  
Yamaha 150hp 4-stroke, GPS, DF, FF,  
bimini, covers, like new, **\$46,995**



21' '18 Nauticstar 2102 Legacy,  
150hp Yamaha 4-stroke, GPS, FF, mint,  
**\$39,995**



21' '20 Carolina Skiff 21 LS,  
115hp 4-stroke, trailer,  
GPS, low hours, **\$37,995**



21' '21 Parker 2100 SE,  
Yamaha F-150, trailer, GPS, sonar, stereo,  
**\$54,995**



21' '04 Sea Boss 210 WA,  
bimini, GPS,  
**\$23,995**



21' '13 Sea Born NX21,  
Yamaha 150hp 4-stroke, trailer, GPS,  
**\$24,995**



20' '16 Sea Chaser 20 HFC,  
135hp, nice options, runs great, **\$36,995**



18' '20 Godfrey Sweetwater SW 1886C,  
70hp Yamaha 4-stroke, FF/DF, bimini,  
**\$29,995**



18' '15 Bayliner 180 Bowrider,  
115hp OB, trailer, bimini, cover, **\$24,995**



17' '06 Key West 172 CC,  
90hp Yamaha, trailer,  
**\$9,795**





**105 Rt. 9 • Bayville, NJ**  
**SALES & SERVICE**  
[www.njoutboards.com](http://www.njoutboards.com)  
**732-505-3002**

**YAMAHA OUTBOARDS®**  
**THE POWER OF RELIABILITY**  
**SALES EVENT**

OFFER VALID FROM  
**JANUARY 5, 2021 - MARCH 2, 2021**  
*Must take delivery by May 31, 2021*

For a limited time, purchase a new, select eligible Yamaha Outboard and choose either:

UP TO **\$1500** **or** **5 Years**  
IN DEALER CREDIT OF WARRANTY PROTECTION

2-3-2021 100 - Three years of Yamaha Limited Warranty Coverage, along with the additional protection of a new year Yamaha Extended Service (YES) plan. That's a total of 5000 hours coverage of an additional 1000 hours.

2-3-2021 100 - Three years of Yamaha Limited Warranty Coverage, along with the additional protection of a new year Yamaha Extended Service (YES) plan. That's a total of 5000 hours coverage of an additional 1000 hours.



**BUY NOW AND BE IN  
 THE WATER THIS SUMMER!**

**ALL NEW!**



**2021 Godfrey Monaco  
 255 SFL**



**2021 Godfrey Monaco 255 MT  
 175hp Yamaha 4-stroke**



**2021 Hurricane Sundek 191 OB  
 150hp Yamaha 4-stroke**

**All New!  
 Here to See!**




**2021 Sea Hunt  
 Ultra 265 SE**

**ALL NEW!**



**2021 Hurricane  
 235 QB**



**2021 Sweetwater SW2186C  
 150hp Yamaha 4-stroke**



**2021 Sweetwater SW1886C  
 70hp Yamaha 4-stroke**

**23' LOA Boat!**



**2021 Parker 21 SE  
 Starting Price \$53,607\***

\*Plus freight & prep

**NEW YAMAHA ENGINE SPECIALS**  
**2021 250 XBLF YO475 - \$18,906\* • 2021 200XCA FK - \$12,942\***

**Certified  
Marine  
Repairs!**

732-776-5992

# 1 Main Street

Avon-By-The-Sea, NJ 07717

**SLIPS • SALES • SERVICE**



## LIFETIME HULL WARRANTY



## JUST IN!

**25' 2021 Admiral 250 EX**  
**T/150hp Honda 4-strokes**

# UNSINKABLE!

## DEEP WATER LANDING



## FULL SERVICE MARINA

- AVON-BY-THE-SEA, NJ

[www.deepwaterlanding.com](http://www.deepwaterlanding.com)

email: [info@deepwaterlanding.com](mailto:info@deepwaterlanding.com)

## PRE-OWNED FEATURED BOAT



**2018 Monterey 295 Sport Yacht,  
8.2L I/O, 160 hrs, loaded, trailer,  
\$140,000 OBO**



# HONDA MARINE

## Reserve 2021 Slip Now!

***Full Service Marina • Located on the Shark River  
1/2 Mile to the Ocean with Direct Inlet Access  
30,000lb Travelift • Certified Clean Marina  
All Floating Docks • Experienced Technicians***



**Always wear a personal flotation device while boating and read your owner's manual. 2021 American Honda Motor Co., Inc.®**





# CAPE HARBOR MARINE SERVICE, LLC

4 Diamond Road Rio Grande, NJ 08242

**609.889.0911**[www.capeharbormarine.com](http://www.capeharbormarine.com)

## MOTORS • MOTORS • MOTORS!

### All Sizes of Mercury Available!

## New 300hp Verado IN STOCK & READY TO GO!



*Call  
for Special  
Price!*

SEVERAL PRE-OWNED  
MOTORS AVAILABLE  
CALL FOR DETAILS



## PRE-OWNED BOATS



**2019 Key West 203 FS**  
Yamaha 115hp VMax • \$43,000



**2017 Key West 219 FS**  
Yamaha 200hp 4-stroke • \$47,000



**2017 Key West 1720 CC**  
90hp Mercury OB & trolling motor  
\$23,750



**2020 Key West 203 FS,**  
150hp Yamaha XB, like new • \$43,000



**2018 Key West 189 FS,**  
115hp Mercury, trailer • \$34,000



**1985 Grady White Overnighter 20,**  
150hp Mercury OB, hardtop • \$9,500

NEW  
**LOADRITE**  
TRAILERS  
IN STOCK &  
READY TO GO!



**MERCURY**  
Portable Engine Clearance Sales

**LOADRITE**

**YAMAHA**



# CAPE HARBOR MARINE SERVICE, LLC

4 Diamond Road Rio Grande, NJ 08242

**609.889.0911**[www.capeharbormarine.com](http://www.capeharbormarine.com)Your Key West  
Superstore!**KW KEY WEST**

**2021 1720 CC**  
Yamaha power



**2021 203 DFS**  
Yamaha power



**2021 203 FS**  
Yamaha 150hp



**2021 189 FS**  
Yamaha power



**2021 219 FS**  
Yamaha 200hp



**2021 239 DFS**  
Yamaha power



**2021 263 FS**  
T/Yamaha 200hp



**2021 239 FS**  
Yamaha 250hp

**MERCURY**  
Portable Engine Clearance Sales

**LOAD-RITE**



**YAMAHA**





# GOOD LUCK POINT MARINA

Est. 1965

61 Dorrance Drive • Bayville, NJ 08721

**732-269-3700**

## RESERVE YOUR 2021 SUMMER SLIP NOW!

Servicing  
the Barnegat  
Bay for Over  
50 Years!

Recently  
Dredged!

**OPEN ALL YEAR! ICE • BAIT • GAS • DIESEL!**

### NOW AVAILABLE:

**Bottom Painting • Boat Detailing • Summer Slips • Boat Pick-up & Launch  
Spring Boat Commissioning • Spring • Start-up/Tune-up (includes water test)  
Two 25 Ton Lifts • Restaurants Nearby • WiFi • Spacious & Clean Restrooms w/Heat & AC  
Private Showers & Dressing Rooms • Laundry • Bait • Fuel • Ice • All Slips Have Water,  
Electric & Catwalks • Fully Stocked Marine Store • Full Service • Marina w/Two Factory Trained Techs**

### PRE-OWNED SPECIALS



1994 33' Carver 330 Mariner  
T/350hp Crusaders, marina maintained since  
new, extra clean • **\$35,000**



36' Pacemaker Sportfisherman,  
T/Crusader V8  
**\$7,500 MAKE OFFER**



Clark Tow Tractor,  
electric hydraulic trailer hitch  
**\$2,000**

**Parts Department open on Sundays  
Large Inventory of Mercury Parts & Accessories  
We also Repair & service all Major Brand Engines with OEM Parts  
ALL WORK GUARANTEED!**

**Fuel Injector Service  
SERVICING  
GAS FUEL INJECTORS!!!**



**MERCURY MERCURY**  
"1 On The Water"  
PREMIER SERVICE  
MERCURY & MERCUISER MASTER TECHNICIANS



AUTHORIZED  
**mercury**  
STERN DRIVER & INBOARD  
SALES & SERVICE

**X. Interlux**  
yachtpaint.com





# All Points Marine Services

*Your trusted boating experts*



**Honda  
Premier  
Dealership**

**NJ's Largest Honda  
Re-Power Center!**

Now is A Great Time to  
Cash in on Honda Rebates &  
Financing Specials!

**Save up to \$2000!**

**SPRING INTO SAVINGS**

Ready to get out on the water in 2021? Now's the Time!

Get up to \$2000 instant savings with the purchase of  
any new 40hp - 250hp Honda Marine outboard engine  
January 5 through March 31, 2021



**HONDA**  
**MARINE**

**3.99% FINANCING**  
ON NEW HONDA OUTBOARDS

Up to 48 months

**HONDA**  
**MARINE**  
The Power Of Boating

**848-232-4292 • [sales@allpointsmarineservices.com](mailto:sales@allpointsmarineservices.com)**

**320 Hawthorne Ave (Rt 35 North) • Point Pleasant Beach, NJ 08742**

Visit **[www.allpointsmarineservices.com](http://www.allpointsmarineservices.com)**

Always wear a personal flotation device while boating and read your owner's manual. 2021 American Honda Motor Co., Inc.®



# DILLON'S CREEK MARINA

www.dillonscreekmarina.net • 732-270-8541  
243 Lake Ave • PO Box 1274 Island Heights, NJ 08732

## *A Full Service Marina*



Power & Sail • Ship's Store • Clean Restrooms & Showers  
Laundry • Clubhouse • Heated Saltwater Pool • Picnic Areas  
Free WiFi • Marine Repairs • Fiberglass Work • Repowering  
Two 25-Ton Open-End Lifts • 3 Hydraulic Boat Trailers  
FORMULA Service Center  
Certified Mercruiser & Yanmar • Upland Winter Storage







**Baywood Marina** 

Family Owned & Operated Since 1965

63 Pilot Drive • Brick, NJ 08723  
Call 732-477-3322  
Email: don@baywoodmarina.com  
Check out all of our products at baywoodmarina.com

200 Slip Marina  
Full Service • Fuel • Swimming Pool  
New & Pre-Owned Boats for Sale  
Located on Barnegat Bay

**JEANNEAU NC**

**Fisherman 242F**

**WELCRAFT**

**GLASTRON**

**GTD 240**

**YAMAHA**

**JEANNEAU LEADER**

**Leader 12.5**

## Do You Take Pride In Your Boat?

The marine insurance professionals at Bay Marine take pride in providing you and your boat with the proper coverage. We will customize each policy to meet your specific boating needs.

Take advantage of Bay Marine's extensive boating and insurance experience and let us chart your boat insurance course. The specialists at Bay Marine are ready to assist you.

**Ask about our Exclusive Insurance Programs for:**

- Sportfish Boats • Six Pack Charter Boats
- Cruisers • Center Consoles



**BAY MARINE**  
Yacht Insurance



Division of  
Bay Agency Insurance Group Inc.

Representing **TRAVELERS** 

Call today for a quote!

**888-718-3900**

93 East River Road • P.O. Box 543 • Rumson, New Jersey 07760

Phone: 732-741-4637 • Fax 732-219-8897

[www.bayagency.net](http://www.bayagency.net)

**MARINE INSURANCE**





**SPRING INTO  
SAVINGS**  
**Jan. 5 - Mar. 31, 2021 Only!**

**Boat Show Only Special**

Get **UP TO \$2000** in Instant Savings\* on select new Honda Marine outboards.

Outboard must be purchased at boat show and delivered by Mar. 31, 2021.



**SOUTH HARBOR MARINE**

116 Oregon Ave (on Barnegat Bay) Waretown NJ

**609-693-3658**

**VIRTUAL  
BOAT SHOW**

Feb 13<sup>TH</sup> - March 31<sup>ST</sup>

In Person Open House

**Sat • March 13<sup>th</sup> & Sat • March 20<sup>th</sup>**

Call Ahead to Arrange an  
**ON WATER DEMO!**

\*At participating dealers only. Qualifying retail customers may receive instant savings off the selling price of a Honda powered boat package or Honda Marine engine(s) sold for repower. This promotion is limited to new Honda Marine 40HP through 250HP outboard engines, 2016 and newer models, sold and delivered between January 5, 2021 and March 31, 2021 and registered by the Dealer in accordance with American Honda Motor Co., Inc.'s sales registration requirements. Boat Show Only savings promotion can only be applied to eligible units sold by an Authorized Honda Marine Dealer at regional boat shows or open houses and delivered to the customer by March 31, 2021 and registered by the Dealer in accordance with American Honda Motor Co., Inc.'s sales registration requirements. Only Honda Marine outboard engines sold for personal use qualify for this promotion. Fleet, demo, commercial, government sales, and special sales are ineligible. Engines sold under special pricing/promotions including (but not limited to) demo and tournament fisherman engines are also excluded. Honda Marine reserves the right to modify, amend, cancel or revoke, in whole or in part, this promotion at any time without prior notice. Always wear a personal flotation device while boating and read your owner's manual. All Honda outboards meet EPA and CARB emission levels. © 2021 American Honda Motor Co., Inc.



# EXPLORE THE 2021 BOATS & WAVERUNNERS

## VISIT US FOR THE BEST OF SHOW SALES EVENT

**2021  
252S**  
More to Love



**2021  
FX LIMITED  
SVHO**  
All That You Can  
Imagine and More!



**2021  
255XD**  
A Real Social Influencer



# YAMAHA

**2021  
VX LIMITED HO**  
Most Power,  
Most Accessories



**2021  
255 FSH  
SPORT E**  
Designed for  
Big Adventures



**2021  
GP1800R  
SVHO**  
Supercharged Race  
Technology



## VISIT THE MID-ATLANTIC'S LARGEST DEALERSHIP

**2021  
275SD**  
A Revolutionary  
Boating Experience



as low as  
**2.99%  
apr**  
FOR 60 MONTHS  
ALL NEW BOATS



**MARINE AND  
MOTORSPORTS**  
**732-929-8168**

as low as  
**3.99%  
apr**  
FOR 36 MONTHS  
ALL NEW WAVERUNNERS

3323 ROUTE 37 EAST • TOMS RIVER, NJ • EMAIL: SALES@TRKAWYAM.COM

**WWW.TOMSRIVERMARINEANDMOTORSPORTS.COM**

\*Available for well qualified tier A1 credit customers who finance through Yamaha Financial Services. 2.99% APR financing for 60 months at \$17.96 per month per \$1,000 financed regardless of down payment. Not available on 275 Series Boats. Must take delivery from retail stock by 3/31/21 on purchase of new 2015-2021 Yamaha Sport Boat. Available on approved credit through Yamaha Financial Services. Not all buyers will qualify. Higher financing rates apply for buyers with lower credit ratings. See dealer for qualifications and complete details. Offer good only at participating dealers. Offer good only at participating dealers. ©2021 Yamaha Motor Corporation, U.S.A. All rights reserved. Follow instructional materials and obey all laws. Drive responsibly, wearing protective apparel. Always drive within your capabilities, allowing time and distance for maneuvers, and respect others around you. Don't drink and drive. FOR MORE INFORMATION, VISIT OUR WEBSITE AT YAMAHABOATS.COM OR CALL 1.800.88.YAMAHA

\*Available for well qualified tier A1 credit customers who finance through Yamaha Financial Services. 3.99% APR financing for 36 months at \$29.52 per month per \$1,000 financed regardless of down payment. Must take delivery from retail stock by 3/31/21 on purchase of new 2015-2021 Yamaha Waverunners. Available on approved credit through Yamaha Financial Services. Not all buyers will qualify. Higher financing rates apply for buyers with lower credit ratings. See dealer for qualifications and complete details. Offer good only at participating dealers. ©2021 Yamaha Motor Corporation, U.S.A. All rights reserved. Follow instructional materials and obey all laws. Drive responsibly, wearing protective apparel. Always drive within your capabilities, allowing time and distance for maneuvers, and respect others around you. Don't drink and drive. FOR MORE INFORMATION, VISIT OUR WEBSITE AT YAMAHABOATS.COM OR CALL 1.800.88.YAMAHA





# HANCE and SMYTHE INC.

Dependable Waterfront Sales & Service **Since 1959**

## BOSTON WHALE<sup>®</sup>

THE UNSINKABLE LEGEND



13 Super Sport



280 Vantage



170 Montauk



280 Outrage



23 Sport Cabin

## MERCURY



## YAMAHA

## KW KEY WEST



239FS Center Console

Selling and Servicing Popular High Quality Boats & Motors in the  
Barnegat Bay - Manahawkin Bay - Little Egg Harbor Bay & Great Bay Area  
**Since 1959**

[www.hanceandsmythe.com](http://www.hanceandsmythe.com)

1225 East Bay Ave • (609) 597-7813 • Manahawkin, NJ

(Closed Monday Tuesday)



# HANCE and SMYTHE INC.

Dependable Waterfront Sales & Service **Since 1959**

## Parker

## YAMAHA



**1801 Center Console**



**2300 SE**

**2120 Sport Cabin**



**61 Years  
of Dependable  
Waterfront  
Sales and  
Service!**



**2520 XLD  
Sport Cabin**



**2320 Sport  
Cabin**



**2501 Center Console**

Selling and Servicing Popular High Quality Boats & Motors in the  
Barnegat Bay - Manahawkin Bay - Little Egg Harbor Bay & Great Bay Area  
Since 1959

**[www.hanceandsmythe.com](http://www.hanceandsmythe.com)**

**1225 East Bay Ave • (609) 597-7813 • Manahawkin, NJ**



# SEA PRO

*the next wave*

Limited Time  
**NEW DEALER SAVINGS**  
**BUY NOW!**



**219 DEEP-V SERIES**

**As Low As \$57,500\***

\*See Dealer For Details

STANDARD FEATURES INCLUDE:

**SIMRAD ELECTRONICS, POWER STEERING, WET SUIT**

**NOW AVAILABLE**

**SPECIAL NEW DEALER INCENTIVES AVAILABLE FOR**

**732.899.2500**

**704 Princeton Ave**

**THE NEXT WAVE - NOW A**





# COMSTOCK

YACHT SALES & MARINA

**In-Stock**



**239 DEEP-V SERIES**

**In-Stock**



**259 DEEP-V SERIES**

**IN STOCK FOR IMMEDIATE DELIVERY**

**UNDS AUDIO, 5 YEAR STEM 2 STERN WARRANTY**

**E AT COMSTOCK**

**A LIMITED TIME CONTACT COMSTOCK FOR DETAILS**

**e. Brick, NJ 08724**

**comstockmarina.com**

**AVAILABLE AT COMSTOCK**





YAMAHA OUTBOARDS'  
**THE POWER OF**  
**RELIABILITY**  
 SALES EVENT

OFFER VALID FROM  
**JANUARY 5, 2021 – MARCH 2, 2021**  
*Must take delivery by May 31, 2021\**



## REPOWER NOW FOR STRIPER SPRING SEASON!

<b>F2.5SMHB</b>	<b>F15 SMHA</b>	<b>F70 LA</b>	<b>F200 XCA</b>	<b>F250 XB</b>
<b>F6 SMHA</b>	<b>F15 LMHA</b>	<b>F90 LB</b>	<b>LF200 XCA</b>	<b>LF250 XB</b>
<b>F6 LMHA</b>	<b>F20 LEHA</b>	F115 LB	<b>F200 XB</b>	<b>F300 NCA</b>
<b>F9.9 SMHB</b>	<b>F25 LMHC</b>	F115 XB	<b>LF200 XB</b>	<b>LF300 NCA</b>
<b>F9.9 LMHB</b>	<b>F25 SWHC</b>	<b>F150 LB</b>	F225 NCA	<b>F300 LA</b>
<b>T9.9 LPHB</b>	F25 LWTC	<b>F150 XB</b>	<b>F250 NCA</b>	
<b>T9.9 XPHB</b>	<b>F40 LA</b>	<b>LF 150 XB</b>	<b>LF250 NCA</b>	

Premium Racks & Slips up to 40' • Yamaha Key Dealer for 31 Years  
 "Everything in Boating Since 1950" • Family Owned & Operated  
 5 Year Round Master Certified Marine Technicians • Marine Store

## NOW BOOKING FOR SPRING WORK!

**electronics • gelcoating • canvas • expert repowers & repairs**

# 732-787-2212

[sales@gatewaymarineinc.com](mailto:sales@gatewaymarineinc.com)

[www.gatewaymarineinc.com](http://www.gatewaymarineinc.com)

**Come By & Visit us at 34 Bay Ave • Highlands, NJ 07732**







# WATERFRONT MARINE

#1 GOLL AVE, SOMERS POINT, NJ ~ 609-926-1700

281 PRINCETON AVE, BRICK, NJ ~ "Featuring Chaparral & Carver" 732-202-6961

2822 SOLOMON'S ISLAND RD, EDGEWATER, MD ~ 443-949-9041

Premium Brands ~ Exceptional Service

[WWW.WATERFRONTMARINE.COM](http://WWW.WATERFRONTMARINE.COM)



**Robalo R302**



**Robalo R242**



**Chaparral 307 SSX**



**Carver Yacht 34 Coupe**



**028**



**250 Suncoast**

## - PREOWNED BOATS -



**Located in Somers Point**

**2007 Chaparral 276 SSX,  
8.1L Volvo • \$Call**



**Located in Somers Point**

**2002 Sea Ray 240 Sundeck  
\$12,900**



**Located in Somers Point**

**24' '13 Robalo R247DC,  
Yamaha F300, electronics • \$58,900**

### BOWRIDERS & PONTOONS

28' '12 Chaparral 284 Sunesta, Volvo Penta 8.1L 400hp	SOLD
28' '12 Chaparral 287 SSX, 8.2L	Pending
28' '15 Chaparral 287 SSX, Volvo Penta 430hp DP, loaded	SOLD
27' '10 Chaparral 276 SSX Bowrider, Volvo Penta 8.1L 375 duo prop	Pending
26' '19 Chaparral 264 Sunesta, Volvo Penta 350 DP	SOLD
26' '16 Four Winns H260	SOLD
25' '06 Cobalt 250	SOLD
24' '08 Cobalt 242 BR, Volvo Penta 5.0 GI 300hp, no bottom paint	SOLD
24' '11 Chaparral 246 SSI, Volvo Penta 5.7L 300hp DP	Pending
24' '18 Chaparral 2430 VRX	Pending
24' '15 Chaparral 243 Vortex	Pending
23' '04 Yamaha AR230 Jet Boat, w/trailer	\$4,900
23' '18 Bennington 23SSXP Tri-Pontoon, Mercury 250hp	\$2,500
23' '17 Stingray 234 LR, Yamaha F250 Vmax, 97 hours	SOLD
23' '07 Monterey 234	Pending
22' '18 Bennington 22 SSRXP Pontoon, Yamaha F150 Vmax	SOLD
22' '11 Chaparral 224 Sunesta	Pending
22' '14 Bennington 2275 GCW, Yamaha F150, 2018 Load Rite trl	Pending
22' '06 Sea Ray 220	Pending
20' '11 Stingray 208 LR	Pending
20' '07 Cobalt Bowrider	Pending

19' '16 Nauticstar Deckboat, Yamaha F115 4-stroke.....SOLD

### CRUISERS & CUDDY CABINS

38' '06 Cruisers Yachts 385 Motor Yacht	Pending
36' '11 Rinker 360 Cruiser	Pending
33' '12 Chaparral 330 Signaure	Pending
23' '88 Chaparral 235XLC, 5.7L Merc	\$7,900

### FISHING BOATS

31' '16 Sportsman 312 Center Console, T/Yamaha F300	\$169,900
30' '00 Pursuit 3070 Offshore, T/2017 Evinrude 300hp G2 Etc	\$74,900
30' '19 Robalo R302 Center Console, Twin Yamaha F300	\$186,480
27' '19 Robalo R272, T/Yamaha F200, lift kept, trailer	Pending
25' '05 Parker 2520 Deep Vee SC, 2006 Yamaha F250, '05 EZ Loader	SOLD
24' '18 Robalo 246 Cayman Center Console, Yamaha F300	Pending
24' '13 Robalo R247 DC	Pending
22' '19 Robalo 226 Cayman Center Console, Yamaha F200, trailer	Pending
22' '18 Robalo R222 Center Console, F200 Yamaha, trailer	SOLD
20' '03 Sea Fox 205 DC	\$12,900
20' '18 Robalo R200 Center Console, Yamaha F150, trailer	SOLD
20' '18 Robalo R202 Center Console, Yamaha F150, trailer	SOLD
20' '96 Trophy 2002 WA	\$8,900
19' '17 Yamaha 190 Center Console, High Output Jet, 70 hours	\$31,900



**AUTHORIZED  
PARTS &  
SERVICE**

**MERCURY**  
MerCruiser



**YAMAHA**  
When you want the best

**VOLVO  
PENTA**



**Full Service  
Marina w/Slips &  
Racks Available!**



# INMAR

INFLATABLE BOATS

POWERED BY  
**SUZUKI**  
MARINE

Professional Series 12'-23'



Recreational Series 8'-14'



Ryan Myers

ryan@inmarboats.com | (800) 729-1665 - Ext 25

**WWW.INMARBOATS.COM**

## ALL NEW MARINA ON THE BARNEGAT BAY

- OVER 120 SLIPS AVAILABLE FOR RENTAL •
- WAVE ARMOR PORTS FOR PWC •
- BOAT LIFTS (STORE YOUR BOAT ON AN ELECTRIC LIFT) •
- WINTER STORAGE •
- INDOOR SHOWROOM •
- PARTS & SERVICE DEPARTMENT •
- MARINE SUPPLIES •



**MARINE AND  
MOTORSPORTS**  
**MARINE DIVISION**

**YAMAHA**  
*Bentley*  
PONTON BOATS

**Kawasaki**  
*WaveArmor*

Located at the base of the Mathis Bridge before Seaside Heights

3323 ROUTE 37 EAST • TOMS RIVER, NJ 08753 • SALES@TRKAWYAM.COM

**(732) 929-8168 • WWW.TOMSRIVERMARINEANDMOTORSPORTS.COM**





**We are your  
One Stop for Polydock  
Floating Docks, Jet Ski  
Ports & Boat Lifts!**



**HarborHoist**

- Fresh or Saltwater
- Push Button Controls
- Easy Loading/Unloading of Passengers
- Works for Any Boat or Dock



**POLYDOCK  
PRODUCTS**



**Call: 201-664-3755 • Email: [sales@mmdocks.com](mailto:sales@mmdocks.com)  
[www.mmdocks.com](http://www.mmdocks.com)**





## OWN THE BOAT OF YOUR DREAMS



Become the next **"Just Financed"**.  
Apply online at **JJBEST.COM** or call **800-USA-1965**.

Offering low rates, long terms, and no prepayment penalties.  
Simple application and quick funding.

Looking to refinance? We can help with that too.



# CANCELLED AC BOAT SHOW SUPER SALE!

**SEAFox**  
No Trades

**LIQUIDATION PRICE!**  
\$199,500

**1 Available!**

**NEW 2020 Sea Fox  
328 Commander**
**WAR EAGLE BOATS**

**2021 War Eagle 860 Sportsman  
F115 Yamaha, alum trailer  
JUST ARRIVED!**
**MONTEREY BOATS**

**BOAT, MOTOR & TRAILER BLOWOUT!**  
\$49,995

**NEW 2019 M225 • Yamaha F150**
**VIAGGIO**  
BY MISTY HARBOR

**ALL NEW MODEL!**

**2021 Diamante & Lago  
READY TO GO!**
**NEW DEALER FOR:**
**Bentley**

**2021 Huge Inventory!**

**JEANNEAU**

**NEW 2021 Jeanneau NC895 Sport  
T/F250 Yamahas**

**Leftover Closeout Pricing!**
**2020 Misty Harbor B-2285  
CEC Bar Triple-tube  
F-250 Yamaha**

**Leftover Closeout Pricing!**
**2020 Misty Harbor  
A-2285 CF  
F-115 Yamaha**

**Leftover Closeout Pricing!**
**2020 Misty Harbor  
A-2085 CF  
F-90 Yamaha**

**Leftover Closeout Pricing!**
**2020 Misty Harbor  
A-2085 CF  
F-115 Yamaha**
**ATTENTION!**
**Severe Engine Shortage!**
**ORDER NOW FOR SPRING DELIVERY!**

**YAMAHA**
**ATTENTION!**
**Severe Engine Shortage!**
**ORDER NOW FOR SPRING DELIVERY!**
**Rudy Marine.com**  
Where Family Boating Begins  
Delaware has **NO SALES TAX!**  
**3 GREAT LOCATIONS!**
**REPOWER HEADQUARTERS**

**YAMAHA OUTBOARDS**  
**THE POWER OF RELIABILITY**  
SALES EVENT

SALES VALID FROM JANUARY 5, 2021 - MARCH 2, 2021  
Must take delivery by May 31, 2021

For a limited time, purchase a new, select eligible Yamaha Outboard and choose either:

UP TO **\$1500** IN CASH CREDIT **OR** **5 Years** OF WARRANTY PROTECTION

Eligible for purchase of new Yamaha Outboard Motor. Excludes all other Yamaha Outboards. Yamaha Outboard Motor is a registered trademark of Yamaha Motor Co., Ltd. © 2021 Yamaha Motor Co., Ltd. All rights reserved. Yamaha Motor Co., Ltd. is not responsible for any errors or omissions in this advertisement. Yamaha Motor Co., Ltd. is not responsible for any errors or omissions in this advertisement. Yamaha Motor Co., Ltd. is not responsible for any errors or omissions in this advertisement.

**302-945-2254 • 32606 DuPont Blvd Dagsboro, DE 19969**
**302-999-8735 • 411 S. Maryland Ave. (Rt 4) Wilmington, DE 19804**
**443-995-3785 • 3033 Kent Narrows Way South, Suite 3 Grasonville, MD 21638**


**FX® SERIES**

**THE TOP-OF-THE-LINE  
WAVERUNNER WHERE  
EXHILARATION  
COMES STANDARD**



**Action**  
**YAMAHA OF NEW JERSEY**  
*Since 1971*

**732-494-5555**

108 Essex Ave (Rt 27) • Metuchen, NJ 08840

**[info@actionyamahanj.com](mailto:info@actionyamahanj.com)**

**[www.actionyamahanj.com](http://www.actionyamahanj.com)**



FX® HO



FX CRUISER® HO



FX SVHO®



FX CRUISER SVHO®



FX® LIMITED SVHO®

**YAMAHAWAVERUNNERS.COM | #RunTheWater**

©2020 Yamaha Motor Corporation, USA. All rights reserved. Follow instructional materials and obey all laws. Ride responsibly, wearing protective apparel and USCG-approved personal flotation device. Always drive within your capabilities, allowing time and distance for maneuvering, and respect others around you. Never drink and ride. Shown with optional accessories.







## WE ARE YOUR #1 CHOICE FOR FLOATING DOCKS AND JET SKI PORTS



**\$995\***

**Glide-N-Ride**

**64" WIDE X 132" LONG**



**\$1195\***

**Roll-N-Ride LS**

**59" WIDE X 140" LONG**



**\$1195\***

**Roll-N-Ride**

**64" WIDE X 132" LONG**



**\$1395\***

**Roll-N-Ride XL**

**90" WIDE X 140" LONG**

**CALL: 201-664-3755**

**EMAIL: [sales@mmdocks.com](mailto:sales@mmdocks.com)**

**[www.mmdocks.com](http://www.mmdocks.com)**

**\*Plus Freight**



# RESERVE YOUR SUMMER 2021 SLIPS STARTING AT \$51/FT

## Slip Customers Receive A Discount on Fuel!

**Newly  
Dredged  
Lagoon!**

**- WE ARE A FULL SERVICE MARINA -**

- Restroom/Shower • Water/Electric Included • 25 Ton Travelift
- Harbor Marine Engines On-Site • Storm Protected • Gas Dock

**Call Now! 609-693-6112 • Fax 609-971-6399**

## OK, Tell Me Why?

**ASK ABOUT  
OUR NEW  
LIGHTWEIGHT  
FABRIC**

You're spending \$300 • \$500 • \$800 to shrink wrap your boat each year, when you're just throwing it away in May! Stop wasting money and do the right thing. *Order your Fisher Boat Cover today!*

### Fisher Boat Covers

**FISHER CANVAS  
FCP  
PRODUCTS**

Fisher Canvas Products, Inc.  
415 Saint Mary Street  
Burlington, NJ 08016

**Call today  
and find out  
how much you  
can save  
on covering  
your boat.**



**Phone: 609-239-2733**  
**Check Out Our Website: [www.FisherCanvas.com](http://www.FisherCanvas.com)**  
**Email: [info@fishercanvas.com](mailto:info@fishercanvas.com)**





732-691-1216 [www.DRBMarineLLC.com](http://www.DRBMarineLLC.com)



**MARINE MAT**  
Marine Decking Solutions

## HOBBY LOBBY MARINE

at Shelter Cove Marina

FAMILY OWNED AND OPERATED SINCE 1961

1423 Bay Avenue • Toms River, NJ 08753

732-929-1711 • [www.hobbylobbymarine.com](http://www.hobbylobbymarine.com)

**LOOKING FOR A SLIP? ONLY A FEW LEFT!**

**CALL NOW OR EMAIL [KAREN@HOBBYLOBBYMARINE.COM](mailto:karen@hobbylobbymarine.com)**

### - FULL SERVICE MARINA -

- Brokerage Boats
- Specializing in Grady White boats
- 86 Deep Water Slips including Water, Electric & Plenty of Parking
- Clean Restrooms w/Showers

**Thinking About Repowering with A New Yamaha Outboard?**

Give us a call or email  
[bob@hobbylobbymarine.com](mailto:bob@hobbylobbymarine.com)  
for a quote!

**Factory Authorized Warranty Center for Grady White Boats**

**Full Service Marina • Yamaha Outboard Parts & Service • Slips up to 35' • Jet Ski Docks**

**Wave Armor**

RESIDENTIAL & COMMERCIAL FLOATING DOCKS AND PWC SYSTEMS

**PWC DOCKS STARTING FROM \$1,499**

**CALL FOR SPECIALS!**

**JERSEY SHORE DOCKS**  
BOAT & PWC DOCKS

**732-929-8168**

3323 ROUTE 37 EAST • TOMS RIVER, NJ  
EMAIL: [SALES@JERSEYSHOREDOCKS.COM](mailto:SALES@JERSEYSHOREDOCKS.COM)

[www.JerseyShoreDocks.com](http://www.JerseyShoreDocks.com)



**Team member  
opportunities  
available**



**Positions available for select  
professional salesman-  
Exclusive for Jersey Cape Custom Yachts  
& high quality brokerage sales**



**Contact:**  
**Scott Krawiec Team Leader/Owner**  
scottk@jerseycaperyachtsales.com  
609-970-2677



**Celebrating 22 years.  
Delivering Quality  
& service to our  
Owners**

**VISIT OUR WEB SITE & FOLLOW US**  
**[www.jerseycaperyachtsales.com](http://www.jerseycaperyachtsales.com)**







# 609-693-9423

146-148 Marine Plaza  
Forked River, NJ

## FULL SERVICE MARINA

tidesendmarina1@gmail.com

**Gas Dock  
Now Open  
7 Days A  
Week**

### RESERVE YOUR 2021 SLIP NOW!



Slips



Service



Sales

**Restrooms/Shower • Travel Lift • Owner Lives on Premises**



**TRIXIE'S LANDING** 732-262-3030

2021 SLIPS AVAILABLE!

303 Brennan Concourse  
Bayville, NJ 08721

[www.CDNmarine.com](http://www.CDNmarine.com)

Service • Storage • Store

# SHOP LOCAL!

## Full Line of Electronics & Boat Accessories!



Scan Here!

Visit: [Shop.CDNmarine.com](http://Shop.CDNmarine.com)  
Order Online • Installation Available!





**Baltic  
MARINA**

101 Baltic Ave  
Waretown, NJ 08758

**732-930-4500**

**FULL SERVICE MARINA  
RESERVE YOUR  
2021 SLIP NOW!**

**Slips • Storage • Repairs  
Gas Dock • Boat Ramp  
Bait & Tackle • Bathrooms/Showers  
Reserve 2021 Slip Now!**

**EASY ACCESS TO THE  
BARNEGAT INLET!**

**ALMAR MARINE LLC**  
**908-309-4016**  
located at Baltic Marina  
101 Baltic Ave • Waretown, NJ 08758  
**almarmarine1@gmail.com**

**Authorized  
Dealer:  
2.5hp - 250hp**



**Veteran**



**NEW TOHATSU  
MOTORS INCLUDE FULL  
5 YEAR WARRANTY!**

**MERCURY SPORT JET SPECIALIST!  
Marine Mechanic 30 Years Experience**



**Wehrle Brothers Marina**



**JUST OFF BARNEGAT BAY  
ON THE NORTH SIDE OF  
THE METEDECONK RIVER**

**732-899-3505**

**197 Princeton Ave  
Brick, NJ 08724**

**www.wbmarina.com**

- Summer Slips To 55' at \$92/ft.
- Secure Rest Rooms & Private Showers
- Swimming Pool
- Picnic Areas
- Free Wi-Fi
- Service Hauling to 40 Tons
- Certified Clean Marina
- Comcast Cable TV Available
- Bottom Painting & Detailing
- Fiberglass Repairs
- Winter Storage Rates \$29 to \$35/ft.

**Jet Ski  
Ports  
\$800**



**MARINER'S SUN HARBOR, LLC**

451 East Bay Avenue • Barnegat, NJ 08005

**Mariner's Sun Harbor, LLC****M•A•R•I•N•A**

SLIPS AVAILABLE • INTRODUCTORY PRICING

**609-698-6399****JUST OPENED!!!****Totally New Facility**Restrooms  
Showers  
Gas DocksWave Runner Ports  
Available**SLIPS AVAILABLE***at Introductory Pricing!***CANYON COVERAGE  
INCLUDED FOR UNLIMITED  
& GOLD MEMBERS****BoatU.S.**  
BOAT OWNERS ASSOCIATION OF THE UNITED STATES

New Jersey

**Tow  BoatU.S.****Don't Get Stranded  
and Pay For  
The Tow!**

- **Unlimited Towing** •
- **No Out of Pocket Expense** •

Just show your membership card for payment, no out of pocket expenses, good on any boat you own, borrow or charter. Includes towing at sea, ungroundings, fuel drops, jump start, discounts at West Marine.

**24 Hour On Call Dispatch 1-800-391-4869 or  
VHF CH16****Contact Your Local Tower For  
More Information:**

TowBoat U.S. Manasquan • Shark River & Mantoloking  
**732-899-6010**

**ATLANTIC****LIFTS, DOCK & BULKHEAD**

1209 Bay Avenue  
Pt. Pleasant, NJ 08742  
732-892-8900  
732-892-3177

Email: [boatlift1@comcast.net](mailto:boatlift1@comcast.net)  
Website: [www.AtlanticDock.com](http://www.AtlanticDock.com)  
Fax: 732-892-7166

Lift Home Improvement Contract #13VH00683600  
Bulkhead Home Improvement Contract #13VH01052300



# BAKER'S MARINA GROUP

**CALL TODAY TO SCHEDULE STORAGE**

**RESERVATIONS & SERVICE! 732-872-9300**



## Marina on the Bay



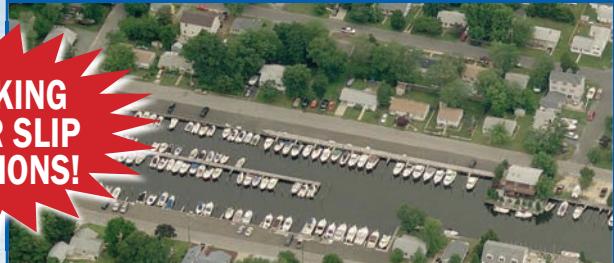
**RESERVE NOW 2021 SLIP!**  
*Highlands, NJ*

### \* New Tiki Bar w/Extended Deck \*

- New Floating Docks
- 35 Ton Marine Travel Lift
- 30 Amp Electric
- Dockside Water
- Bathrooms/Shower
- Picnic Area w/Grills
- Wifi/Ice/Bait

**NY/NJ  
Prime Fishing  
Access**

## Bakers Basin



**RESERVE NOW 2021 SLIP!**  
*Waretown, NJ*

### \* EASY ACCESS TO BARNEGAT INLET \*

- 30 Amp Electric
- Dockside Water
- Bathrooms
- Picnic Grounds
- Trash Disposal

**Slip Side  
Parking!**

[www.bakersmarinagroup.com](http://www.bakersmarinagroup.com)

**BLAZING**  **VISUALS**

# CUSTOM BOAT GRAPHICS, WRAPS, & REG NUMBERS



**BLAZINGVISUALS.COM**

**CALL CASEY - 732.267.6822**

**CASEY@BLAZINGVISUALS.COM**

SAY YOU SAW IT IN THE SALTY DOG   /BLAZING\_VISUALS

**PROFESSIONAL DESIGN TEAM  
HIGHEST QUALITY MATERIALS**

**3M**

**A**  
ARLON

**Real  
Gold**



# Warehouse & Offices FOR RENT

CALL OR TEXT ROB TODAY 908-489-5098

Industrial Warehouse

**FOR RENT**  
BY OWNER

**WALL NJ**

## WAREHOUSE



## RENT WAREHOUSE OR OFFICE OR BOTH

### Warehouse Space

1000 SQ FEET  
\$1,000  
per month

2500 SQ FEET  
\$2,500  
per month

5000 SQ FEET  
\$5,000  
per month

### OFFICE SPACE

AS LOW AS  
\$600 FOR 600 SQ FEET

2000 SQ FEET  
\$2,000  
per month

3000 SQ FEET  
\$3,000  
per month

OFFICE SPACE &  
OUTDOOR STORAGE  
AVAILABLE  
WITH  
RENT OF  
WAREHOUSE

**908-489-5098**

# AFTER 53 YEARS WE ARE HAVING A RETIREMENT SALE

## USED GALV ROLLER TRAILERS

### SINGLE AXLE

2700  
2800  
3100  
LBS.

### TANDEM AXLE

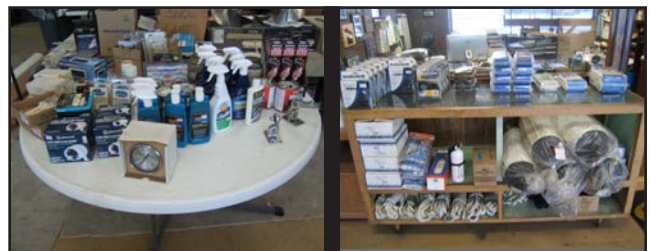
4100    7900  
6600    8000  
6800    8200  
7600    9700  
LBS.



(2) USED ALPHA OUTDRIVES  
\$750 EACH



PLASTIC STEPS W/RAILING  
(2) 3 STEPS                      (2) 4 STEPS



MISCELLANEOUS ACCESSORIES

## PROPS

### NEW

### USED



### MOTOR TOTER



### FILE CABINETS



\$5.00 each

## - OTHER ITEMS -

(21) USED PROPS

(14) NEW PROPS

USED ALUM PROPS \$25

USED SS PROPS \$100

NEW PROPS 50% OFF DEALER COST

TRAILER POWER WINCHES

MISC SPRAY PAINT

KICKER MOTOR BRACKET

MISC HAND WINCHES

TEST TANK

MOTOR TOTER

4HP EVINRUDE - ceased  
\$25.00

COAST GUARD EQUIP  
CLEANING SUPPLIES

**ANCHOR MARINE**  
1328 Jct Hwys 33 & 34 • Farmingdale, NJ  
**(732) 938-5411**  
anchorjs@verizon.net



# ALMARS

**We Are A Full Service, Premier Mercury Outboard Repair Center! Let Our Certified Mercury Technicians Service Your Mercury Motor Needs!**

## LEFTOVER VERADO SALE!

**HELP WANTED!  
IN SEARCH OF  
CERTIFIED MERCURY  
OB TECH!  
CALL FOR DETAILS**



**225hp  
black • \$14,995**



**250hp  
black • \$15,995**



**300hp  
black • SOLD**



**300hp  
white • \$18,995**



**350hp  
Call for Great Deal!**



**350hp  
Call for Great Deal!**

**We Now  
Offer  
INJECTOR  
SERVICE  
with  
ONE Day  
Turnaround!**



**150  
4-stroke  
Black**



**150 ProXS  
4-stroke  
Black**



**175XL ProXS  
4-stroke  
Black**



**200  
Sea Pro  
Black**



**225XL  
4-stroke  
Black**



**250 XL  
4-stroke  
White**

**100's of Used  
Cowlings In Stock!  
Call for Availability!**

**5HP  
BLOWOUT SALE!  
Call for Pricing!**

**250XL PRO  
VERADO 15,995  
Only 1 Available**

### REMANUFACTURED OUTBOARD ENGINE SALE!

90hp - 250hp 2 Year Warranty

**Starting As Low As \$5,495 Call for Details!**

**CALL US  
FOR GREAT  
DEALS ON  
NON-CURRENT  
POWERHEADS!**

**Call us for current pricing new current  
and noncurrent outboards  
NO SALES TAX IN DELAWARE!**

701 Washington St., New Castle, DE

**302-328-8541  
www.almarsoutboards.net**

All prices good  
while supplies last!

**HOURS: Monday - Friday: 8am - 5pm  
CALL FOR GREAT PRICING ON NEW  
& USED MERCURY OUTBOARDS**

**NO HIDDEN COSTS  
NOT RESPONSIBLE FOR TYPOGRAPHICAL ERRORS**



Pricing includes all rebates.

Visit us at [www.boattowers.com](http://www.boattowers.com)

### Radar Arches

#### Limited Time Only

Basic Radar Arch

Package **\$1,190**

Includes:

- ◆ 4 Rod Holders
- ◆ 2 Antenna Plates
- ◆ Radar Plate
- ◆ Installation Kit



Radar Arches • Fiberglass

T-Tops • Marlin Towers

Half Towers • Rod Racks • Leaning Posts

Lowest Prices on Outriggers & Accessories By:



## Boat Canvas and Enclosures



### Metal Creations

Outstanding quality since 1994

500 James St. • Unit #3 Lakewood, NJ

Call Toll Free 1-888-625-7426

Boat Dealers & Brokers...

# YOUR AD could be HERE

....Reaching out to well over 30,000 interested home owners and prospects!

We're the original  
FREE Boating Publication....  
and readers find a new copy on the  
stands...every other week.

For more information,  
call the leader in targeted  
boat advertising

Toll Free 1-888-843-1585



# Morgan Marina

LOCATED OFF RARITAN BAY ON CHEESEQUAKE CREEK  
See Us From the Garden State Parkway

## Celebrating 60 Years on the Water!

*All Your Boating Needs In One Location!*

**10%  
DISCOUNT  
for  
New  
Customers**  
-Call Today!-

**Summer Slips  
Available  
Reserve Now!**

New WAVE RUNNER Docks!

Morgan Marina...home for your boat®

Visit Our  
**MARINE  
STORE**  
Call for This  
Week's Specials



8000 Gondek Drive, Sayreville, NJ • 732-727-2289  
[www.morganmarinaNJ.com](http://www.morganmarinaNJ.com)





# ALL PRINT ADS INCLUDE FREE INTERNET LISTING\*

## PRIVATE AD RATES

- ☐ INTERNET ONLY UP TO 1 YEAR..... \$39<sup>00</sup>  
☐ 3 ISSUES NO PHOTO CLASSIFIED..... \$49<sup>00</sup>  
☐ 3 ISSUES WITH COLOR PHOTO WITH COLOR PHOTO ON INTERNET..... \$59<sup>00</sup>  
☐ INTERNET FEATURE ADD ON 4 WEEKS AVAILABLE WITH AD PURCHASE ONLY! ON THE SALTY DOG HOME PAGE..... \$49<sup>00</sup>  
☐ FRONT COVER..... \$40<sup>00</sup>  
☐ FACEBOOK FEATURE..... \$15<sup>00</sup>  
☐ PUBLICATION MAILED TO YOU..... \$3<sup>00</sup>

TOTAL \_\_\_\_\_

FRONT COVERS ARE BASED ON AVAILABILITY

- ☐ CHECK ☐ MONEY ORDER ☐ DISCOVER  
☐ MASTERCARD ☐ VISA ☐ AMERICAN EXPRESS

CC# \_\_\_\_\_

Expiration Date \_\_\_\_\_ Security Code \_\_\_\_\_

Advertiser's Name .....

Address .....

Phone .....

Where did you pickup "The Salty Dog"?

Store \_\_\_\_\_ Town \_\_\_\_\_

\*Internet Listing For One Year.

No refunds after Ad is processed. • Advertiser will be responsible for \$20 fee on returned checks.

**YOUR BOAT LISTING CAN ALSO BE SUBMITTED ON THE INTERNET [www.thesaltydog.com](http://www.thesaltydog.com)**

Fill out the description form below, up to 125 characters (including spaces & punctuation) of advertising. Please put one character per space beginning with the motor. Include a check, money order or credit card, and mail to us with a good quality COLOR picture of your boat. Photos will only be returned if accompanied by a self-addressed stamped envelope.

AD COPY

FT. \_\_\_\_\_ YR. \_\_\_\_\_

MANUF. / MODEL \_\_\_\_\_

MOTOR \_\_\_\_\_

ACCESSORIES \_\_\_\_\_

LOCATION OF BOAT \_\_\_\_\_ City \_\_\_\_\_ State \_\_\_\_\_ Zip Code \_\_\_\_\_

PRICE \_\_\_\_\_

PHONE # \_\_\_\_\_

EMAIL \_\_\_\_\_

**Send to: The Salty Dog  
254 Brick Blvd • Suite 1  
Brick, NJ 08723**

**732-714-8400**

Fax (732) 477-9000 • Email: [info@thesaltydog.com](mailto:info@thesaltydog.com)

## SPECIAL FEATURES

PRIVATE BOAT ADS ..... Pgs. 58-59

SAILBOATS ..... Pg. 60

## SUBSCRIPTION NEW JERSEY

No. of issues \_\_\_\_\_ x \$3.00\* = Total Cost \_\_\_\_\_

- ☐ CHECK ☐ MONEY ORDER ☐ MASTERCARD ☐ VISA

Credit Card No. \_\_\_\_\_

Exp. Date \_\_\_\_\_

Signature \_\_\_\_\_

SALTY DOG is published Bi-weekly 25 times a year.

Papers are mailed FIRST CLASS. Your first issue will be mailed within 1 week. To subscribe, just fill in the amount of issues and multiply by \$3.00\*

Name \_\_\_\_\_

Address \_\_\_\_\_

City \_\_\_\_\_ State \_\_\_\_\_ Zip \_\_\_\_\_

Telephone \_\_\_\_\_

**Mail To: THE SALTY DOG, 254 Brick Blvd • Suite 1, Brick, NJ 08723**



A Bi-weekly Publication for  
Powerboats, Sailboats, Marine  
Equipment, Supplies, Services,  
Waterfront and Photo Ads

**For More Info on Display Ads or Internet Listings**

**Call 732-714-8400 • Fax (732) 477-9000**

**[info@thesaltydog.com](mailto:info@thesaltydog.com) • Mon- Fri 9:00am to 4:00pm**

All advertising, including photographs becomes the property of Salty Dog Publications and not that of the advertiser. No part of The Salty Dog may be reproduced without written consent of the publisher. Although extreme care is taken in checking advertising copy for accuracy, no warranty is given or implied by the publisher. The advertiser, nor, Salty Dog Publications, will not be held responsible for typographical errors, mistakes or misprints. Publishers reserve the right to refuse advertising for any reason whatever.

**Covering New Jersey, Philadelphia, Staten Island and Northern Delaware**

**DOWNLOAD THIS ISSUE OF THE SALTY DOG AT [WWW.THESALTYDOG.COM](http://WWW.THESALTYDOG.COM)**

**See Color Photo on the Internet**

**42' 1996 SONIC OFFSHORE**, fresh MC 502 MPI engines, full cockpit enclosure canvas, AC/HT, hot water, gen, VHS, GPS, perfect family boat, immaculate condition, **\$89,900, 551-574-9787** [harmarassoc@earthlink.net](mailto:harmarassoc@earthlink.net) **152455**

**See Color Photo on the Internet**

**30' 2004 SEA RAY 300 SUNDANCER**, T/5.7L MPI, fuel injected, AC/HT, gen, loaded, 400 hours, just serviced, **\$49,900, 609-693-9423** [tidesendmarina1@gmail.com](mailto:tidesendmarina1@gmail.com) **148279**

**See Color Photo on the Internet**

**28' 2016 CHRIS CRAFT LAUNCH 28 HERITAGE EDITION**, Mercruiser V8 6.2L, FWC, Bill, **\$172,000, 732-899-8010** [sales@schraderyachts.com](mailto:sales@schraderyachts.com) **152139**

**See Color Photo on the Internet**

**33' 1996 BLACKFIN Combi**, 3208 cats with approx 2800 hrs, northern lights gen, must see to appreciate, **\$79,000, 610-291-0617** [Robertdthompson10@gmail.com](mailto:Robertdthompson10@gmail.com)

152146

**See Color Photo on the Internet**

**29' 2018 MONTEREY 295 SPORT YACHT**, 8.2L I/O, 160 hours, loaded, trailer, **\$140,000 OBO, 917-817-5084** [esproviero@googlemail.com](mailto:esproviero@googlemail.com) **151848**

**See Color Photo on the Internet**

**28' 2008 SEA RAY 280 SUNDANCER**, Twin Mercruiser 4.3L, two staterooms, **\$53,500, 732-899-8010** [sales@schraderyachts.com](mailto:sales@schraderyachts.com) **152138**

**See Color Photo on the Internet**

**27' 2014 SAILFISH SAILFISH 275 DC**, T/Mercury 200hp Verados, 117 hours, no bottom paint, **\$105,995, 732-840-1100** [sales@brennanboat.com](mailto:sales@brennanboat.com) **151854**

**See Color Photo on the Internet**

**33' 1999 FOUNTAIN 10M**, T/502 fuel injected rebuilt in '19, TRS drives, Velvet drive trans, IMCO helm, external hyd steering, 80+ MPH, Myco trailer, **\$29,900, 609-693-9423** [tidesendmarina1@gmail.com](mailto:tidesendmarina1@gmail.com) **151683**

**See Color Photo on the Internet**

**29' 2009 SEA RAY 270 SUNDANCER**, 350 MAG MPI, 1 owner, very clean inside and out, **\$18,600, 407-972-5029** [searayboating11@gmail.com](mailto:searayboating11@gmail.com)

152331

**See Color Photo on the Internet**

**26' 1999 WORLD CAT 266 CC**, 2003 T/200hp Honda 4-strokes, brand new interior and electronics - GPS & FF, 500 hours, **\$44,000, 848-232-4292** [sales@allpointsmarineservices.com](mailto:sales@allpointsmarineservices.com) **152498**

**See Color Photo on the Internet**

**31' 2014 PURSUIT 310 ST CENTER CONSOLE**, Twin 300hp Yamahas, low hours, **\$179,000, 732-899-8010** [sales@schraderyachts.com](mailto:sales@schraderyachts.com) **152133**

**See Color Photo on the Internet**

**26' 2003 HYDRA-SPORTS 2600 VECTOR**, excellent condition, ready to sell, **\$34,950 OBO, 908-489-5098** [seaportpics@gmail.com](mailto:seaportpics@gmail.com) **151127**

**See Color Photo on the Internet**

**31' 1971 BERTRAM FLYBRIDGE CRUISER**, 2 Yanmar 4L HA-STP 240hp DsIs, flybridge encl, Garmin GPS, chartplotter, radar, windlass, **\$105,000, 609-884-2051** [utschyachtsales@comcast.net](mailto:utschyachtsales@comcast.net) **152460**

**See Color Photo on the Internet**

**28' 2017 CHRIS CRAFT LAUNCH 28**, T/Merc 6.2L 350hp, loaded, lift kept, **\$180,000, 732-899-8010** [sales@schraderyachts.com](mailto:sales@schraderyachts.com) **151849**

**See Color Photo on the Internet**

**25' 2015 PARKER 2520 XLD**, Twin Yamaha F200, open back pilothouse, custom rodholders, 4G radar, **\$119,900, 732-899-8010** [sales@schraderyachts.com](mailto:sales@schraderyachts.com) **152137**



**See Color Photo on the Internet**

**25' 2018 GRADY-WHITE  
257 FISHERMAN,  
SPRING SPECIAL!!**

T/F150 Yamahas, low hrs, 7/23 warr,  
factory opt, Garmin GPS radar,  
Icom 504 radio, ORs, fish inshore/  
offshore, family cruising, water skiing,  
like new, ride in Grady, Sea V2 hull,  
winterized & wrapped for 2021

**\$118,000**

**Call 302-226-3734  
or 302-218-9325**

144975

**See Color Photo on the Internet**

**23' 2010 SEA RAY 230 SELECT, Merc 5.0L, 130  
hours, \$30,900, 732-899-8010 sales@schraderyachts.com 151775**

**See Color Photo on the Internet**

**20' 1995 May-Craft, new Yamaha, \$14,950, 908-489-5098 151124**

**See Color Photo on the Internet**

**23' 2002 TROPHY 2352 WA, 5.7L Merc I/O, marine  
head, baitwell, 2004 Tidewater tandem trailer, \$14,900,  
908-309-4016 almarmarine1@gmail.com 150630**

**See Color Photo on the Internet**

**20' 2000 BAYLINER Trophy WA, 175 Mercury, NewSunbrella  
canvas New Garmin Echomap Uhd 74v dual axle trailer 4 new  
tires and rims + spare Full winter cover, \$10,000, 856-981-8676  
Russellzappala@gmail.com 152080**

**See Color Photo on the Internet**

**25' 2016 SEA RAY 250 SLX, Merc 8.2L, BIII, loaded,  
low hours, excellent condition, \$82,500, 732-899-8010  
sales@schraderyachts.com 151851**

**See Color Photo on the Internet**

**22' 1992 SHAMROCK CENTER CONSOLE, runs  
great, gas engine, \$9,500, 908-489-5098 151035**

**See Color Photo on the Internet**

**20' 2003 SUGAR SAND CALAIS, 210hp Sport  
Jet, runs great, 40 MPH, \$7,295, 908-309-4016  
almarmarine1@gmail.com 152017**

**See Color Photo on the Internet**

**25' 2014 SEA RAY 250 SLX, Merc 350 MPI, BIII,  
bimini, covers, priced to sell, \$54,995, 732-840-1100  
sales@brennanboat.com 151774**

**See Color Photo on the Internet**

**22' 2002 GRADY-WHITE Seafarer 228, Yamaha 200 HP 4  
Stroke, 454 Total Hours. All options, hardtop, Price includes  
Winter Canvas Cover, Load-Rite Trailer, 732-687-7659  
whettler@logisticrealty.com 152141**

**See Color Photo on the Internet**

**TOHATSU 150HP  
BFT 4-STROKE NEW  
5 YEAR WARRANTY!!! control  
and cables, tack & harness,  
key switch, water separator,  
aluminum prop  
\$13,600  
908-309-4016  
almarmarine1@gmail.com 150629**

**See Color Photo on the Internet**

**24' 2007 SEA RAY 240 SUNDANCER, 5.0L 260hp  
Bravo III, Load Rite trailer, \$27,500, 732-899-8010  
sales@schraderyachts.com 152134**

**See Color Photo on the Internet**

**21' 2001 PARKER 21 SPECIAL EDITION, 150hp  
Yamaha, 804 hours, VHF, FF, Garmin GPS, \$26,000,  
732-899-8010 sales@schraderyachts.com 152019**

**See Color Photo on the Internet**

**23' 2013 PRO-LINE 23 Express, Merc Verado 300,  
Appr. 130 hrs, GPS/FF, PortaHead, Sink, Live/Bait  
Wells, Clean Boat, \$48,000, 609-709-5937 tjanuto@  
gmail.com 152456**

**See Color Photo on the Internet**

**20' 2000 GRADY-WHITE Adventurer 208, 2001  
Johnson Ocean Pro 175 2-stroke, with 2-axle trailer  
(optional), \$15,000, 732-773-5627 mr.buffett@  
comcast.net 151308**

**C&C MARINA** 732-237-2222  
211 Sloop Creek Rd. Bayville, NJ 08721  
cncmarina.com



2016 Regal 2500 BR • Volvo V8 300 CG/DPSB, LOW 82 hrs • \$63,000

**QUALITY PRE-OWNED BOATS & MOTORS**

2003 Monterey 298 SS, T/Merc 350 Mag MPI/Bill ..... \$49,999  
2005 Carolina Skiff 1655, Mercury 50hp 4-stroke ..... \$9,999

**Pre-Owned Trailer**

2013 Hoosier BX 224NG-12, hydraulic pontoon trailer .... \$3,550

**YAMAHA** **MERCURY** **Interlux**  
MerCruiser yachtpaint.com

**LOAD RITE**

**RESERVE YOUR 2021 SUMMER SLIP NOW!**

Visit Our Facebook Page @candcmarina

**distinctive Interiors**  
THE TRIM SHOP

In Business Since 1992



**COVID-19 CONTACTLESS UPHOLSTERY**

**FREE ESTIMATES!**

**Complete Boat Upholstery**  
Off Season Specials Available

- Will Remove & Replace all of your Boat's Upholstery
- Final Cleaning w/Spray Nine Antibacterial Cleaner
- Pay Over the Phone Options
- Over 25 Years in Business
- Store is Open & Ready to Serve Your Boating Needs

**732-270-1260**  
www.distinctiveautointerior.com  
1819 Rt. 37E • Toms River, NJ 08753  
Email: thetrimshop@comcast.net

**LOCKWOOD BOAT WORKS**  
Year Round Storage • Full Service Boatyard

**Reserve Summer Slips for 2021!**

**Interlux**  
yachtpaint.com



**MERCURY MerCruiser**  
Highway 35 • South Amboy, N.J., 08879

web page:  
www.lockwoodboatworks.com

**732-721-1605**

**All New 2021 RELEASE Coming Soon!**  
Call to See the New 196RX and 210RX this Spring!

**Call Regarding our NAUTICAL MARKET CANCELLED!**  
Saturday • April 10<sup>th</sup>

**CURRENT POWERBOAT LISTING!!!**

28' Southport ('09), Twin Evinrude G2 300hp.....	\$115,850
29' Phoenix Sportfish Conv, Twin Crusader FWC 270hp.....	\$15,990
29' Bimini Express ('90) "OPTICAL ILLUSION", Twin Volvo TAMD41B.....	Offer Pending
31' Bertram ('79) "TRITON II", T/Cummins V504, sleeps 4.....	\$32,000
34' Luhrs ('86) "EBBTIDE III" T/Ocean Marine 240hp.....	\$29,900

**CURRENT SAILBOAT LISTING!**

21' ETAP ('05) "ESCAPE", Torqueedo 3hp Outboard.....	New Listing \$25,000
25' Catalina ('85), 2006 Mercury 9hp 4-stroke outboard.....	Price Dropped \$6,500
33' C&C ('75), Yanmar 3GM30F.....	\$19,500
34' Sabre "TEMPEST", Westerbeke 27hp, 2 single, 2 double berths.....	New Listing \$35,900
35' Allied Seabreeze ('66), 2003 Yanmar 29hp.....	New Listing \$34,900
40' Freedom 40/40 ('95) "STARSTRUCK", Yanmar 3JH@GBE.....	Price Dropped \$119,900



Since  
1959**HANCE and SMYTHE INC.**Closed  
Tuesday**Used Boats Specials!**

2011 Key West 211 DC,  
Evinrude 175 HP E-tec, livewell,  
stern seats, bimini suntop,  
mooring canvas, **\$24,500**



1974 Aquasport 24 CC,  
hull refurbished 2005,  
Yamaha F-225 (2005), t-top, **\$17,950**



1990 Bayliner 20' Capri Cuddy,  
'04 Johnson 115, mooring cover,  
Escort trailer • **\$4,500**



2014 15' Boston Whaler  
150 Super Sport,  
Mercury 60hp 4-stroke, full bow rail,  
seat cushions, bow cushion, **\$16,750**

**Leftover Blowout Models!**

Starcraft 1032 Jon Boat  
Call for Blowout Price!



Starcraft 1232 Jon Boat  
Call for Blowout Price!



Starcraft 12' Sea Lite  
Call for Blowout Price!



Starcraft 14' Sea Farer  
Call for Blowout Price!

Boston Whaler  
Parker • Key West  
Yamaha  
Evinrude/Johnson

**www.hanceandsmythe.com**  
**(609) 597-7813**

1225 East Bay Ave  
Manahawkin, NJ

**Red Bank Marina****732-741-3320****261 West Front St • Red Bank, NJ 07701**

LET'S GET READY  
**FOR BOATING  
SEASON!**

**Authorized  
Tohatsu Dealer!**  
New push start motors on our  
Carolina Skiff Rental Fleet!  
Call for Info!

**Summer Slips Available • Spring and Fall Services  
Boat Rentals • Winter Storage • Haul in and out  
Bottom Paint • Power Wash & much more  
NEW! Full Time Service On Site & New Docks**

**FOR SALE**

**COMMERCIAL GRADE FLOATING DOCKS** - All docks are in use at a working marina - selling all!

Make Offer! MUST SELL! Please call to make an appointment!

One dock is made by Meeco Sullivan its 120' X 8', in great condition • (10) 8/20 floating docks  
(7) 6/20 floating docks - most docks have the black bilge under them, and some have foam, all float very good,  
could just use a quick power wash • Docks starting at \$400+ depending on the size and condition

Call for More Information • No holds! Must have a way to transport!

**MISCELLANEOUS BOAT AND EQUIPMENT FOR SALE:**

Jet Ski floats and six sport ports.

- 20' Grady White -150 Evinrude  
motor runs good • (10) 16' fiberglass Dorys
- Jet skis on trailers • Kayaks



**Interlux**  
yachtpaint.com



**YAMAHA**



**MERCURY**





**Worldwide Yacht Sales | Yacht Charters | New Yacht Construction**



1980 43' Viking - \$69,500  
Tristan Weiser - 609.420.0469



1978 36' Trojan - \$30,000  
Jason Hinsch - 410.507.1259



1993 32' Wellcraft - \$12,900  
Jack Kelly - 609.517.2822



1997 32' Maxum - \$30,000  
Ed Pickering - 410.708.0633



1995 29' C-Hawk - \$42,500  
Jason Hinsch - 410.507.1259



2000 29' Tiara Yachts - \$65,000  
Curtis Stokes - 410.919.4900



2013 27' Cherubini - \$195,000  
Jack Kelly - 609.517.2822



1979 26' Slickcraft - \$14,900  
Jack Kelly - 609.517.2822



2003 24' Wellcraft - \$18,000  
Ed Pickering - 410.708.0633



2007 22' Chris-Craft - \$35,000  
David Robinson - 410.310.8855



1983 21' Atlantic City - \$25,000  
Curtis Stokes - 410.919.4900



2003 20' Cherubini - \$39,900  
Bill Boos - 410.200.9295

To see more details about these and all other yachts around the globe, please visit our website below.

Annapolis, MD • St. Michaels, MD • Delaware City, DE • Deltaville, VA • Woodbridge, VA  
Telephone: 410.919.4900 • Email: [info@curtisstokes.net](mailto:info@curtisstokes.net)

**[www.curtisstokes.net](http://www.curtisstokes.net)**





# RESERVE YOUR SLIP & SPRING SERVICE NOW!

## We Have 3 Convenient Locations!

**(Minmar Marine)**  
14 Old Sea Isle Blvd.  
Sea Isle City, NJ 08243 (SI)  
609-263-2201  
www.minmar.com

Lavallette, NJ (LV)  
732-793-7460

Lanoka Harbor, NJ (LH)  
609-242-2200

www.oceanbeachmarina.com

## WE ARE HERE TO SERVE ALL YOUR BOAT BROKERAGE NEEDS!



FEATURED  
BOAT

30' 2009  
**Robalo 300**  
Center Console  
T/F250 Yamaha,  
689 hours, elects,  
**\$75,000 • LV**



33' '01 Wellcraft 300 Martinique,  
T/8.1L I/O, AC, gen, **\$50,000 • SI**



45' '88 Bayliner 4550 MY, T/FWC Dsls,  
spacious, motivated seller, **\$79,900 • LH**



32' '87 Wellcraft 3200 St Tropez,  
T/454 FWC, many upgrades, **\$24,900 • LH**



30' '00 Bayliner 3055 Ciera, T/5.7L  
Bll, gen, 519 hrs, **\$37,900 • LH**



28' '05 Triton 2895 CC, T/225hp  
4-stroke, ready to fish, **\$58,000 • LV**



27' '90 Avanti, T/2002 225hp OB,  
just detailed, **\$37,500 • SI**



25' '01 Baja Outlaw, 496,  
excellent condition, **\$33,950 • SI**



24' '79 Aquasport CC, 2002 Yamaha  
F-225, trl, **\$11,500 • SI**



24' '17 Yamaha E242X, very low  
hours, loaded, **\$64,900 • SI**



24' '99 Silverhawk 24CC, 2005 350  
Mag, Blll, ready to fish, **\$26,900 • LH**



23' '03 Glastron GX235, 5.0L 270hp,  
440 hrs, well maint'd, **\$20,995 • LV**



22' '19 Godfrey Sweetwater 2286, 115hp  
Yamaha V-Max, 33 hrs, **\$39,900 • LH**



20' '05 Baja Outlaw, 5.0L I/O,  
105 hrs, 60MPH boat, **\$14,500 • LV**



18' '02 Bayliner 185 Capri,  
3.0L I/O, 135hp, trailer, **\$12,350 • LV**

45' '89 Bayliner 4550 MY .....	LH .....	\$79,900
36' '77 Egg Harbor Sportfisherman.....	LH .....	\$39,900
33' '01 Wellcraft 3300 Martinique .....	SI .....	\$54,900
32' '87 Wellcraft St Tropez 3200 .....	LH .....	\$24,900
30' '01 Chaparral 300 Signature .....	LH .....	\$44,900
30' '02 Cruisers 3075 .....	LH .....	\$42,900
30' '00 Bayliner 3055 Ciera.....	LH .....	\$37,900
30' '96 Wellcraft 302 Scarab.....	LV .....	\$35,900
28' '05 Triton 2895 CC.....	LV .....	\$58,000
28' '86 Proline 28WA.....	LH .....	\$16,600
24' '03 Stingray 240 LR.....	LH .....	\$15,900

**OPEN  
ALL  
YEAR!**

24' '99 Silverhawk 24CC.....	LH .....	\$26,900
23' '10 Horizon SC23 .....	LV .....	\$14,500
23' '15 Sea Hunt 234 Ultra .....	LH .....	\$59,900
22' '19 Godfrey Sweetwater Tri-toon.....	LH .....	\$39,900
21' '93 Wellcraft V-21 Step Lift.....	LV .....	\$6,500
20' '00 Monterey 20 Edge BR.....	SI .....	\$10,000
20' '05 Baja Outlaw .....	LV .....	\$14,500
18' '01 Seagull Nautico 18.....	LV .....	\$8,900
18' '87 Sea Ox 180 DC .....	LH .....	\$12,200
18' '02 Bayliner 185 Capri .....	LV .....	\$12,350
17' '75 Boston Whaler Montauk 170CC ...	LV .....	\$12,800



## R.J. LAUER BOAT HAULING

### LOCAL & LONG DISTANCE

Hydraulic Trailer  
Power Boats & Sail Boats  
*Fully Insured • 30 Years of Experience*

CALL OR TEXT 609.548.4383  
53 WATER STREET • BARNEGAT NJ 08005

## CASSIDY'S MARINA

ON THE METEDECONK RIVER

### RESERVE YOUR 2021 SLIP NOW!

Owner Lives On Premises

**732-477-1111**  
www.cassidysmarina.com

## STACERS MOBILE MARINE LLC

"When Performance Counts"

**Engine Repair - Inboard,  
Outboard, Inboard Outboard  
FULL SERVICE SHOP**

Shrinkwrap • Winterization  
24/7 Emergency Service

NJ: (732) 962-0513  
197 Princeton Ave • Brick, NJ 08724  
stacersmobilemarine@aol.com

## A-LOT- CLEANER

Junk Boat Removal &  
Disposal  
Debris Removal Dumpsters  
732-244-8980  
www.alotcleaner.com

To Place Your Boat Ad in The  
Salty Dog, see page 57 in this  
publication or visit us on the web  
[www.thesaltydog.com](http://www.thesaltydog.com)  
Click On "List Your Boat"

Deadlines for  
Next Issue:

NJ - 03.03.2021

CB - 03.10.2021

\* By midnight

## Bristol Canvas Fabrication

Serving Monmouth, Ocean & Atlantic Counties

ALL YOUR  
MARINE  
CANVAS &  
UPHOLSTERY  
NEEDS



Interior & Exterior • Upholstery • Enclosures  
Bimini Tops • Mooring Covers • Convertible Tops  
Frame Design & Bending • Sail Covers & Bags  
Dodgers & Spray Hoods • Accessory Covers  
Repairs

**732-262-8844**

**908-814-3315 (cell)**

Find us on Facebook @  
Bristol Canvas Fabrication  
email: bristolcanvas@msn.com

## JERSEY COAST BLASTING

Cape May County's  
Local Soda Blaster

*Why Pay all the Travel Prices?*

- Bottom Paint Removal & Recoatings
- Best Prices Guaranteed!!
- Your Location or Mine!!
- Free Pick-up & Drop-offs  
Once the Job is Done
- Other Marine Services Available



**609-496-4224**

[WWW.JERSEYCOASTBLASTING.COM](http://WWW.JERSEYCOASTBLASTING.COM)

## Marine Technologies

Surveying and Consulting

*Pre-Purchase • Condition and Value  
Appraisals • Consulting*

### Bruce DeGraw AMS

Graduate of Chapman's School of Seamanship

908-433-5724

3608 Belmar Blvd • Neptune, NJ 07753  
marinetechsveys@gmail.com



SOCIETY OF ACCREDITED  
MARINE SURVEYORS, INC.

VIEW  
**THOUSANDS OF  
NEW & USED  
BOATS ONLINE!**



**MARINE TRANSPORT** LLC.

Toms River, NJ

**732-270-4848**

[WWW.NJBOATHAULER.COM](http://WWW.NJBOATHAULER.COM)

~ Fully  
Licensed &  
Insured

~ Local &  
Long  
Distance

~ Hydraulic  
Boat  
Hauling for  
Power and  
Sailboats

SAY YOU  
SAW IT IN  
THE SALTY DOG!



# BOAT BLASTING

Servicing the  
Entire Tri-State Area  
Fully Insured

**Brick, NJ**

848-333-9723

AtlanticSodaBlasting.com

*Atlantic County*  
MARINE TRANSPORT, LLC

**BOAT HAULING**  
UP TO 33'

Local/Regional • Fully Insured  
Air-Ride Hydraulic Trailer

**609-472-4353**

www.acmarinetransport.com

## MERCUISER REPOWERS!

383 Factory  
Reconditioned  
Mag Carb (350hp)  
w/factory warranty

**\$9,000 plus tax**

**732-604-5638**

TAKE YOUR  
BOAT HOME WITH...

**CMT**

Complete Marine Transport  
INSURED  
Local & Long Distance  
Boat Hauling

State Of The Art Equipment  
Power & Sail

**732-291-7766**

Atlantic Highlands, NJ

## CAPTAINS LICENSE CLASS



USCG Approved Course & Test  
No Exam at the Coast Guard

**COVID FRIENDLY ONLINE COURSES  
AVAILABLE • LEARN & TEST ONLINE!**

**732-830-9285**

www.captainslicenseclass.com

## WIRE WIZARD MARINE

Electrical/Electronic  
Specialists

Troubleshooting • Repairs

New Installations

732-270-1003

**Toms River, NJ**

**R.B.P.**   
Grounds

Tree Removal  
& Trimming

908-596-9195  
Brick, NJ

## CUSTOM REBUILT CARBURETORS

Full Line Carburetor Shop  
Also specializing in  
MARINE CARBURETORS

ALL CARBS ARE:  
Completely Disassembled • Washed  
and Boiled Out • Recolored • Wet Flow  
Tested • 100% Guaranteed

2 Barrels from \$155 • 4 Barrels from \$175

• Fast Turnaround Time • Dealers Welcome

30+ Years Experience

200A Wood Ave., Middlesex, NJ 08846

**732-356-4333**

We Accept Visa and Mastercard

www.customrebuiltcarbs.com

## SHIP TO SHORELINE MARINE TRANSPORT

THE COMPANY  
THAT TRUCKS YOUR BOAT  
ACROSS AMERICA

15' - 50' • SERVING 48 STATES

**904-823-3729**

www.shiptoshoreline.com

**VIEW THOUSANDS  
OF NEW & USED  
BOATS ONLINE TODAY!**

**SALVAGE  
BOAT REMOVAL**

**JUNK THAT BOAT OR JET SKI**

Call 908-868-6026

Servicing Ocean County



**732-288-1000**  
1219 Fischer Blvd  
Toms River, NJ  
[WWW.COTYMARINE.COM](http://WWW.COTYMARINE.COM)

# WINTER PRE-OWNED BLOWOUT SALE!

**HELP WANTED!**  
**Qualified  
Marine Mechanics  
Needed!**  
Call for Details

**Over 30 Boats on Display INSIDE!**



2003 Maxum 370 SY,  
\$94,995



2013 Crownline 325 Super Sport  
\$74,995



2018 Cobia 220 Center Console  
200hp 4-stroke, 218 hours, loaded  
\$59,995



2017 Monterey 355 SY,  
T/6.2L Mercs, 74 hours, \$249,995



2019 Avalon 2785 Elite Windshield,  
300hp Verado • \$89,900



2014 Yamaha AR192  
70 hours, 1.8 Jet • \$24,995



2014 Monterey 280 SY,  
8.2L Merc, \$84,995



2020 Blackfin 272 DC,  
T/300hp Mercury Verados,  
28 hours, lift kept • \$189,995



2014 Monterey 328 SS,  
T/Mercs, loaded, \$119,995



2016 Bayliner 26' XE7 Element,  
200hp Verado, 150 hours • \$49,995



2003 Scout 280 Abaco,  
T/225hp 4-strokes, \$49,995



2013 Four Winns H230,  
I/O, \$39,995

2004 Rinker 312 .....	Pending	2016 Robalo R222 CC, 200hp OB .....	\$56,995
2019 Monterey 298 SS, T/4.5L, Bill .....	\$134,995	2005 Four Winns 220, 350 Mag.....	\$18,995
2015 Monterey 288 SS, 8.2L .....	\$79,995	2016 Bayliner 215 Bowrider, 4.5L Merc I/O .....	\$34,995
2001 Bayliner 280, 7.4L .....	\$21,995	1999 Seaswirl 210 BR .....	\$9,995
2002 Formula 280 BR, I/O .....	\$34,995	2004 Caravelle 212 .....	\$10,995
2007 Glastron 279 GS, I/O .....	\$28,995	2003 Boston Whaler 210 Outrage, Mercury 225hp .....	\$19,995
2002 Rinker 272 Captiva .....	\$8,900	1989 Grady White 20 Overnighter, 150hp OB .....	\$9,995
2003 Rinker 270 Fiesta Vee, new long block .....	\$9,995	2006 Bayliner 195, 3.0L .....	\$10,999
1989 Wellcraft 25 Coastal, 150hp 4-stroke .....	\$7,500	2014 Yamaha AR192, 1.8L Jet, 250hp .....	\$22,995
2005 Cobalt 250, I/O Duo Prop .....	\$24,995	2013 Bayliner 185 .....	\$19,995
2000 Monterey 242 Cruiser .....	\$9,995	1999 Bayliner 1850 Capri, 3.0L Mercruiser .....	\$2,995
2004 Wellcraft 252 Coastal, T/150hp, low hrs .....	\$29,995	2000 Sea Ray 180 BR, Mercury OB .....	\$5,995
2015 Avalon 2485 QL, 115hp 4-stroke .....	\$34,995		
2013 Four Winns H230, I/O .....	\$39,995		
2014 Avalon Grand Island 22, Mercury 115hp 4-stroke .....	\$19,995		







732-288-1000

1219 Fischer Blvd  
Toms River, NJ



# NO WINTER SHOWS!

## Over 30 of the Hottest Models in the Industry on Display!

It's 75° and Sunny  
Everyday In Our Showroom!

**MONTEREY  
BOATS**

305 SS



On Display in  
Showroom!

**BLACKFIN**

272 DC



On Display in  
Showroom!

**Avalon**

On Display in  
Showroom!



2485 LSZ OL

**KW KEY WEST**

239 FS



On Display  
in Showroom!

[WWW.COTYMARINE.COM](http://WWW.COTYMARINE.COM)



**MERCURY**  
MerCruiser



**2016 Sea Ray  
510 Flybridge**  
**New Listing**  
**Low Hours**



**2015 Pursuit 385  
Offshore**  
**\$334,900**

## WANT TO SELL YOUR BOAT FAST?

A successful brokerage program starts with exposure. Due to our size, Clarks Landing can offer more exposure than most other brokers.

Our experienced, dedicated team handles the entire transaction, including financing, marketing, demonstration rides, haul outs, estimates & more.

List your boat where it is or at one of our facilities.

**WE SPEED UP THE SALE BY  
TAKING A TRADE ON YOUR  
BOAT, CONTACT CLARKS FOR  
A HASSLE-FREE EXPERIENCE.**

**Get A Free Market Analysis**

**[www.ClarksLanding.com](http://www.ClarksLanding.com)**

- ✓ Reduced Commissions
- ✓ Free Land Storage Program
- ✓ Huge Marketing Budget
- ✓ Family-Owned over 40 Years
- ✓ **Free Drone Media Package  
for Listings over \$150K**

### New Cutwater Boats Receive 5 Years of Engine Warranty Protection through the Yamaha Outboard Sales Event

Through 3/2/2021 • Call for Details

**Scan QR Codes with Your Phone's Camera for Details & Video Tours**

**CUTWATER**  
Factory  
Direct Pricing

**LIMITED  
INVENTORY!  
Buy Now  
& Cruise  
Later!**

**BENETEAU**



**CLARKS LANDING**  
YACHT SALES

**732-899-5559 • [www.ClarksLanding.com](http://www.ClarksLanding.com)**

on the Manasquan River  
847 Arnold Avenue  
Point Pleasant, NJ